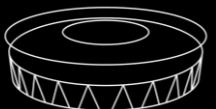


London Stadium 2023 M&E Brochure



Delaware
NorthSM

LONDON
STADIUM





EXPERIENCE EVERYTHING

Why London Stadium

Inspire your delegates with a venue synonymous with record-breaking athletic excellence, the biggest acts in live music and global sporting spectacles.

We pride ourselves on the diversity of our events and audience, and our spaces reflect that, with facilities ideal for hosting conferences, workshops, dinners and parties.



EST. 1884



EST. 1873
Heineken®



AICPA®



Loughborough University

London Stadium hosted the 2012 Olympic Games



Team GB won 65 medals, 29 of them gold – a record not surpassed since 1908 – at the Olympics, and 120 medals at the Paralympics.

We Remain the Stadium of Champions



Home of the 2012 Olympics



West Ham United Home Ground



Major League Baseball in the UK



Iconic Music Concerts



66,000 Capacity



Exclusive Venue Hire



Olympic Park



In House Catering



OUR EVENT SPACES

The Forge

The Forge is a timeless tribute to glory. It is a sophisticated venue perfect for dinners, receptions and parties. With its own bar area and views over the City of London it is one of the larger rooms available seating up to 250 for a conference, 220 for dinner and receptions for 400 guests.



Perfect for

Awards dinners,
receptions and
lunches.

156

Cabaret

220

Theatre

250

Banquet

400

Drinks
Reception

270

Buffet

360° Tour

 Natural Light

 City Views

 First Floor



The Forge



BM6



The Royal East

Our Event Spaces

Prior to the Stadium's reopening, a £16.2m investment was made to create state of the art corporate facilities, comprising 8 lounges and 16 private boxes which host a total of 3600 guests per event. Here, guests enjoy fine food and drinks on demand and the best seats in the house. Outside of event days these spaces are perfect for high quality conferences, banquets and meetings with spectacular pitch facing views.



The Londoner Lounges



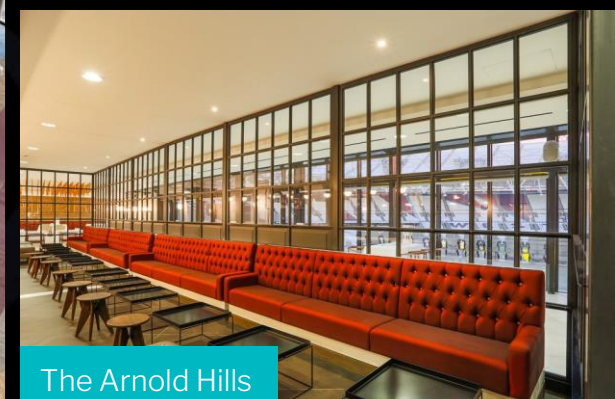
The Great Britain



Corporate Boxes



The Boleyn



The Arnold Hills

Our Event Spaces

	Board Room	Cabaret	Theatre	Banquet	Drinks Reception	Buffet
The Forge	-	156	220	250	400	270
The Great Briton and The Academy	-	200	320	300	460	350
The Boleyn	-	-	-	-	1000	550
The Royal East	20	25	50	84	330	230
The Arnold Hills	20	54	90	80	340	200
BM6	16	24	40	35	40	35
Corporate Suites	10	-	-	10	12	10

The Great Britain and The Academy

The Academy is an elegant exploration of the care and the craft that goes into developing young athletes, as well as the dedication of every sports person aiming for the topflight. A fantastic area for food and drink breaks, exhibitions or drinks receptions and to start an inspirational meeting or event.

Adjacent to the Academy is The Great Briton - an area that references the British champions of London 2012 as well as those remarkable West Ham United players and managers who earned a major winners medal. The Great Briton overlooks the City of London and is ideal for awards dinners, dances, parties and meetings for up to 300 guests.



Perfect for

Drinks receptions,
lunch breaks and
as a pre-event
breakout.

200

Cabaret

320

Theatre

300

Banquet

460

Drinks
Reception

350

Buffet

360° Tour



Natural Light



Pitch Views



Second Floor



City Views

The Boleyn

A homage to the high charm pubs of Upton Park. This is a social meeting place and a destination party venue. It is an extraordinary venue with space to party for 800+ guests. Ideal for informal events with its own bars, occasional tables and seating, it recreates a first class pub atmosphere with pitch side access.



Perfect for
Parties, teambuilding
and night club
style events.

1,000
Drinks
Reception

550
Buffet

360° Tour

 Pitch Side  Ground Floor

The Royal East

A space to celebrate the iconic events and incredible achievements that East London has inspired and continues to be inspired by. The Royal East references a history rich in royal connections - from the Royal Docks to the Boleyn Ground, former home of West Ham United.

The venue has iconic views of the pitch and is ideal for parties, small meetings and as a breakout space. With a sophisticated feel and built in buffet service and bar areas, the Royal East is ideal for events from 30 - 300 guests.

Perfect for

Upscale events to wow clients or colleagues.



20

Board Room

25

Cabaret

50

Theatre

84

Banquet

330

Drinks Reception

230

Buffet

360° Tour



Natural Light



Pitch Views



Balcony



First Floor

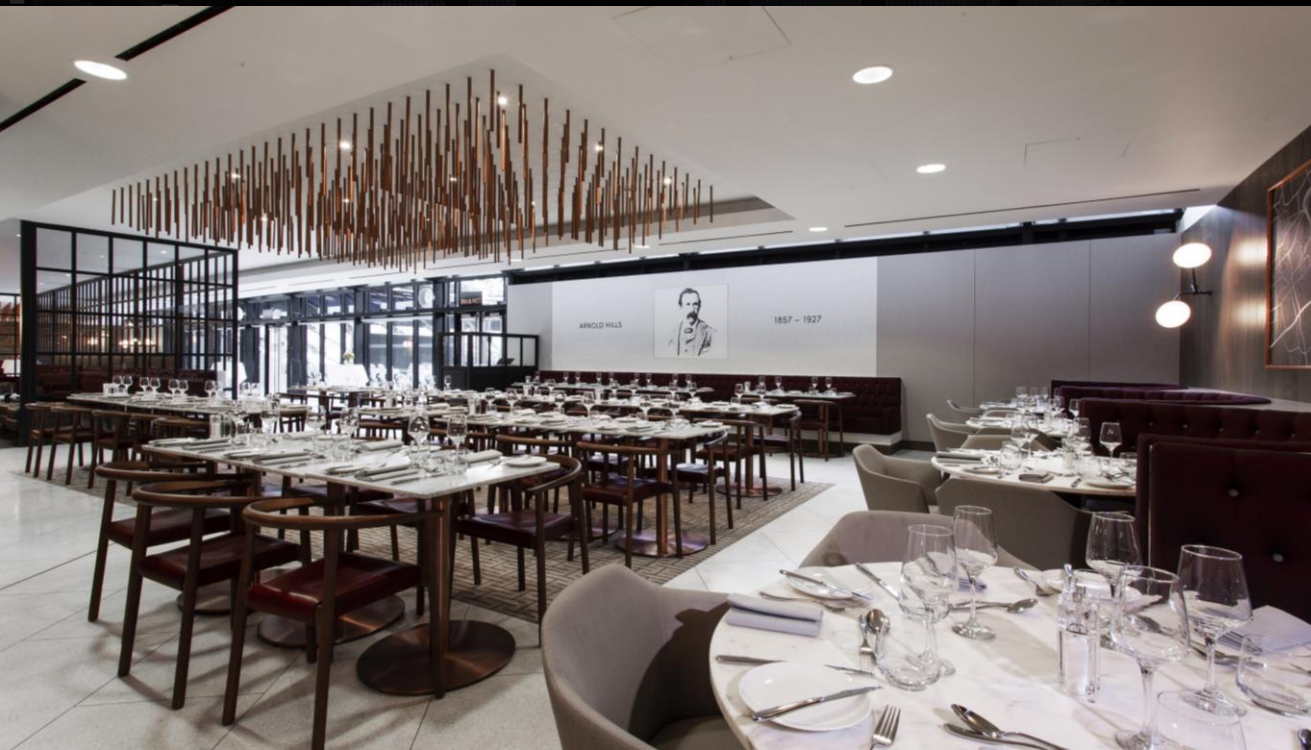
The Arnold Hills

This premium events space pays homage to a true visionary. Arnold Hills was a man with an appetite for change. A man whose grand vision for East London began to realise its potential over 100 years later at Queen Elizabeth Olympic Park.

The room has spectacular views of the bowl of the stadium and is ideal for small meetings and parties.

Perfect for

Small meetings
and parties.



20

Board
Room

54

Cabaret

90

Theatre

80

Banquet

340

Drinks
Reception

200

Buffet

360° Tour



Natural Light



Pitch Views



Balcony



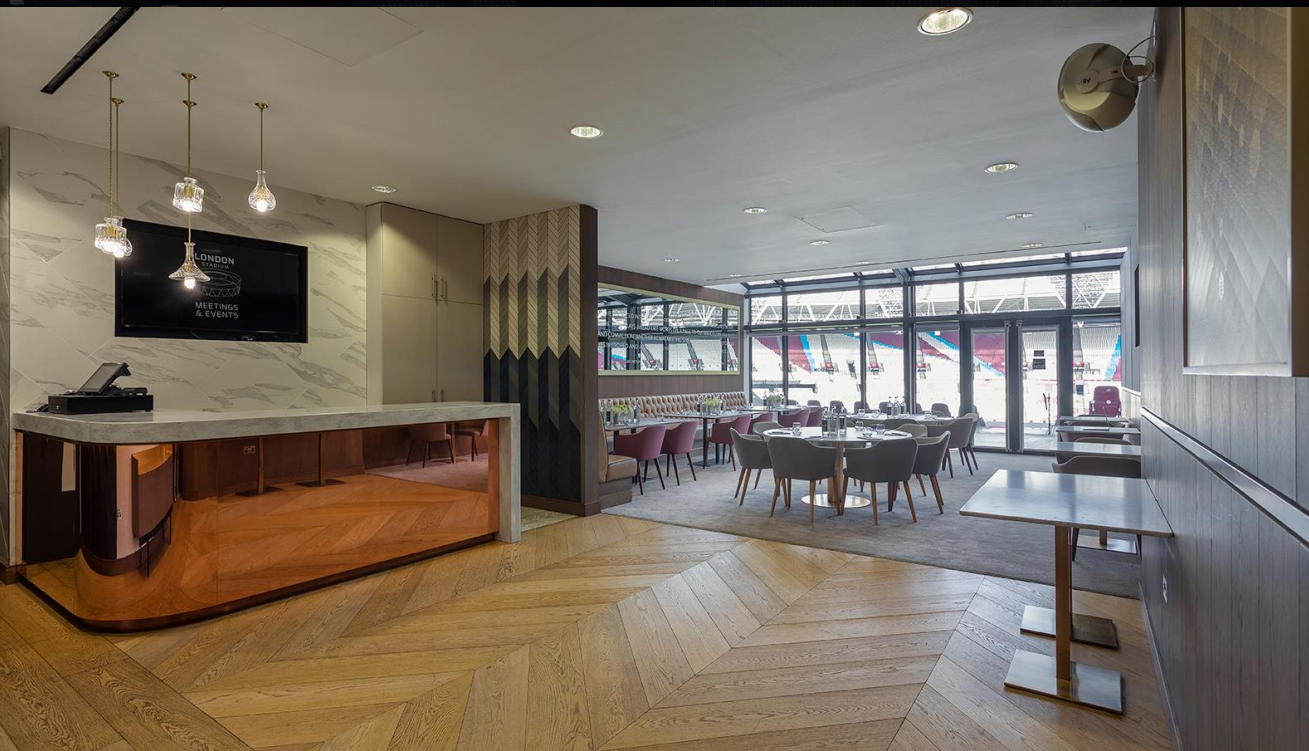
First Floor

BM6

BM6 is an elegant environment taking inspiration from West Ham legend, Bobby Moore's professional heyday. This distinguished event space uses characterful sixties styling to compliment iconic furniture with a modern twist. Playful and elegant, BM6 weaves narratives about Bobby Moore - the player, the friend, the gentleman - to celebrate his enduring legacy at West Ham United and his lasting influence on the game.

Perfect for

Intimate and private dinners.



16

Board Room

24

Cabaret

40

Theatre

35

Banquet

40

Drinks Reception

35

Buffet

Floor Plan



Natural Light



Pitch Views



Balcony



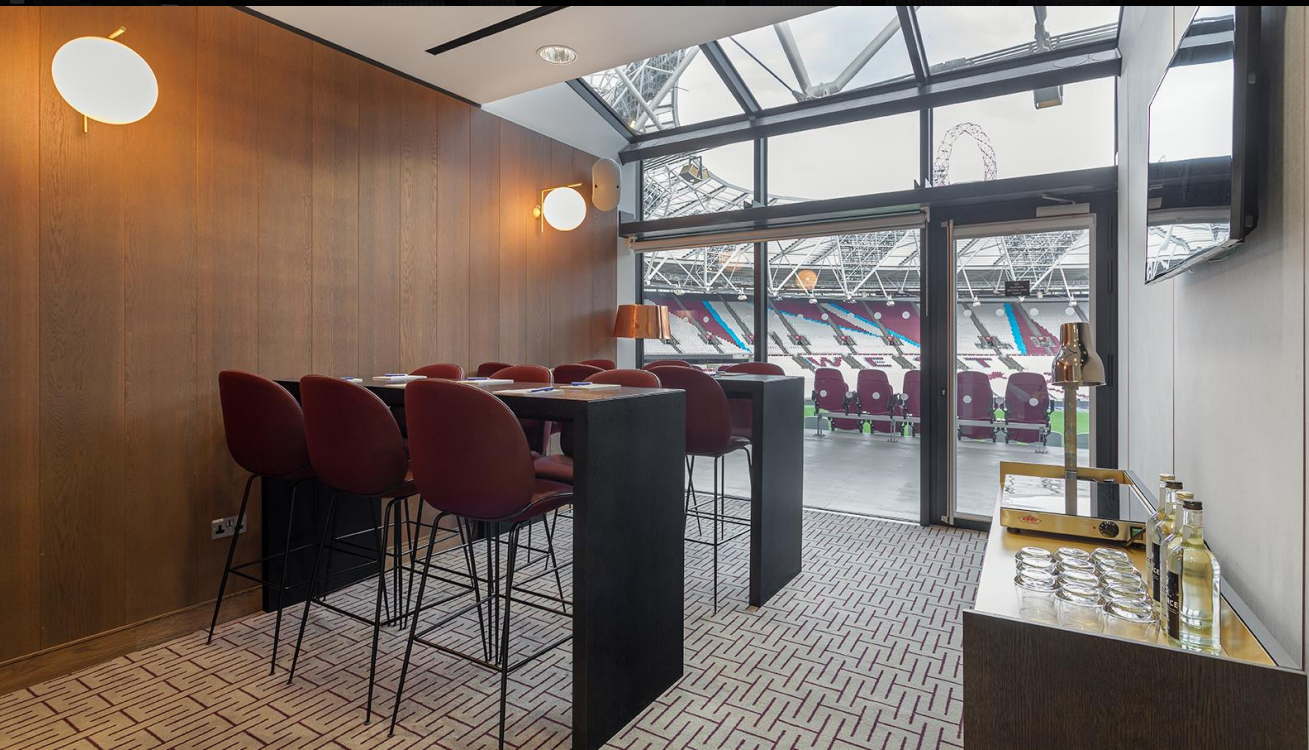
First Floor

Corporate Suites

The Londoner Blue and Claret Lounges are vibrant gathering spaces that showcase a sincere affection for the local culture and a humble respect for the beginnings of West Ham United. This lively, social environment is perfect for smaller parties and celebratory events. The boxes are located off each of the Lounges and all have pitch views making them ideal for confidential meetings, small away days and interviews. Lunch breaks can be taken in the adjacent lounges to add a little variety to the day.

Perfect for

Small parties,
meetings and
Breakout
areas.



10

Board
Room

10

Banquet

12

Drinks
Reception

10

Buffet

Floor Plan



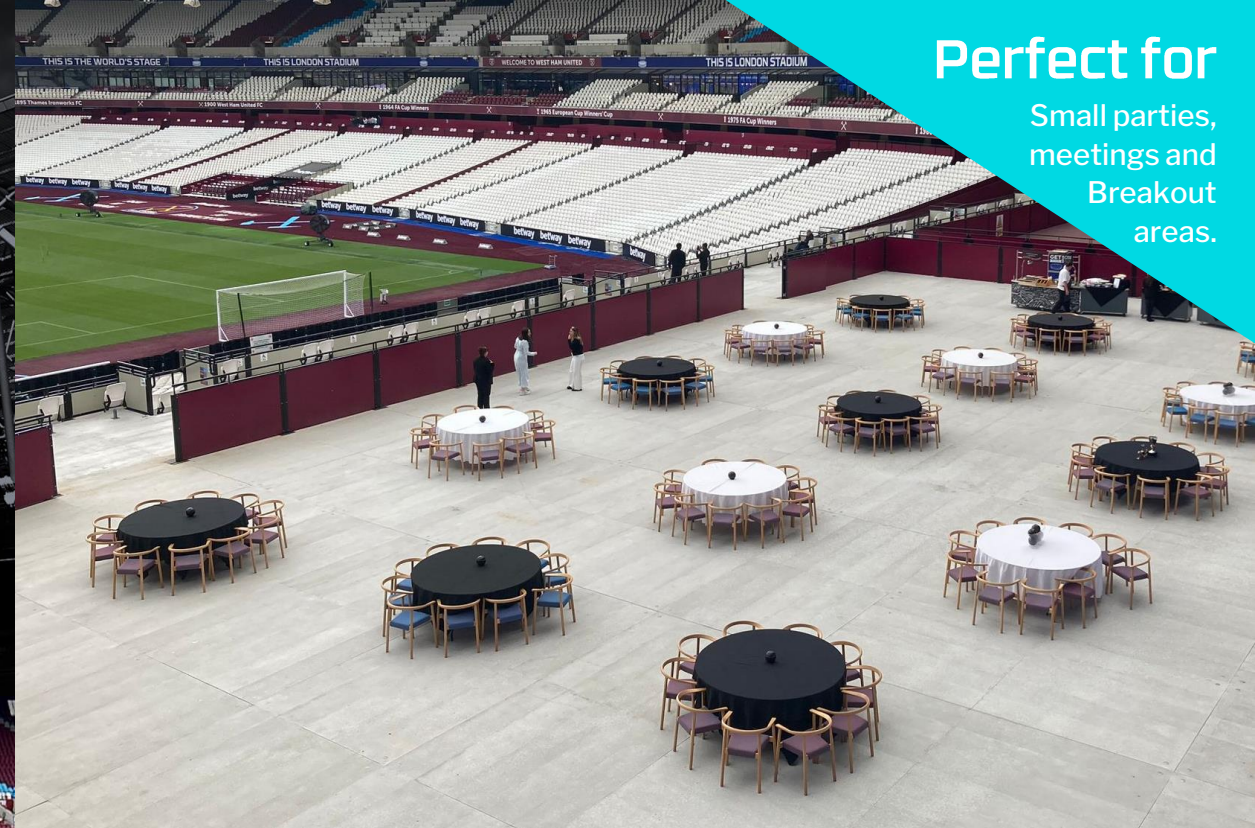
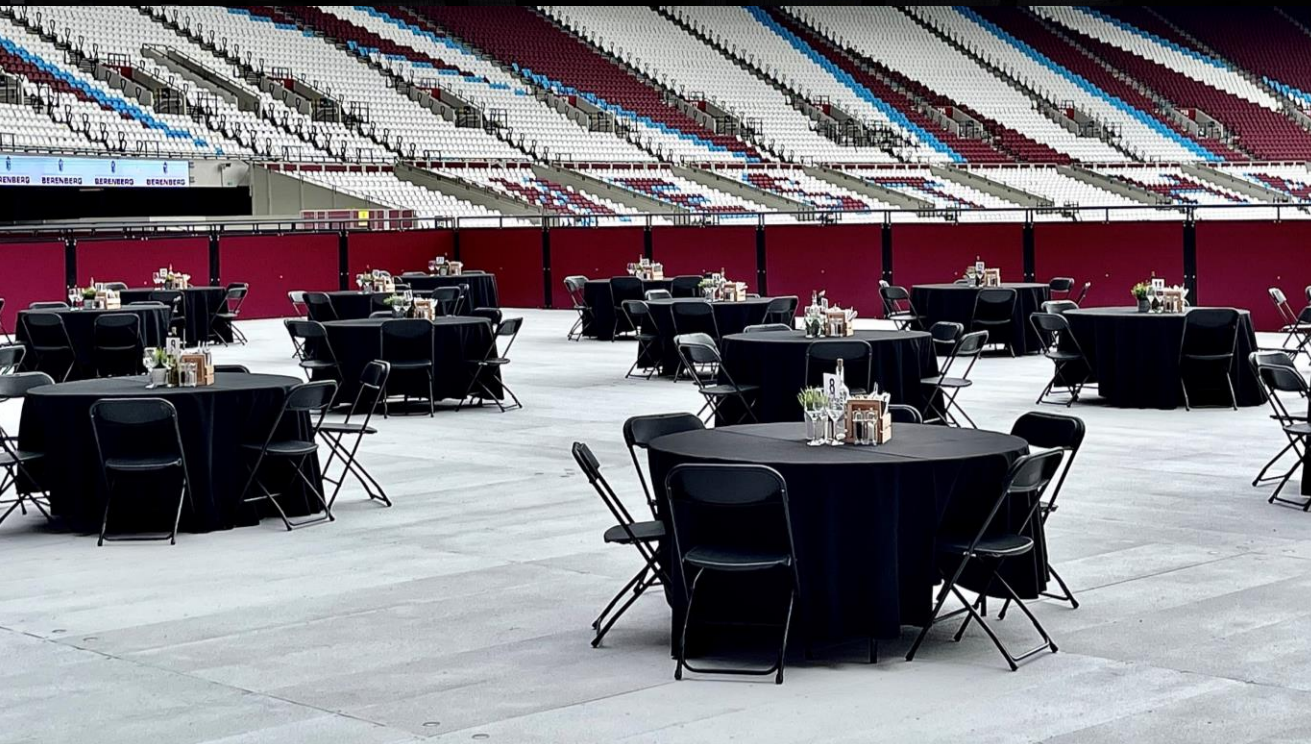
Balcony



First Floor

The Deck

The Deck is a social event space and a destination summer venue. With space for up to 1000 guests for parties and 800 guests for conferences, you can entertain on mass with the iconic London Stadium as the backdrop. Featuring outdoor bars, roof cover, and the ability to brand the North Scoreboard situated above, it is our most versatile venue with abundant space for special activations.



Perfect for

Small parties,
meetings and
Breakout
areas.

750

Cabaret

800

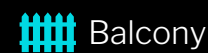
Theatre

750

Banquet

1000

Drinks
Reception



Balcony



Ground Floor



Pitch Views

M10

CATERING & PACKAGES



Catering

Delaware North is proud to be the official caterer of London Stadium. They hire the best chef's and empower them to create menus that are locally sourced and locally relevant. They question the norm and deliver beyond expectation. As a company we have a commitment to sourcing ethically, sustainably and commercially.



Our Chefs

Under the leadership of our Executive Head Chef, Gary Foakes, our highly skilled team are excellent at designing luxurious menus to both your tastes and budget. Gary has cooked for the Queen on 3 separate occasions and has previously worked under Gordon Ramsey and Raymond Blanc. Our team settles for nothing less than perfection at every meal, from a formal dinner to street food.



Day Catering Package

PLATINUM £62.80 plus VAT

- Arrival tea, coffee and juice with pastries and whole fruit
- Mid-morning tea and coffee with cookies and flowerpot muffins
- Chef's fork buffet with two mains and two sides and tea and coffee
- Mid-afternoon tea and coffee served with sweet treat of the day
- Water served throughout the day

Venue hire 9am – 5pm

Cleaning, room set up and security.



Day Catering Package

GOLD £54.80 plus VAT

- Arrival tea and coffee with pastries
- Mid-morning tea and coffee with biscuits and whole fruit
- Chef's selection of sandwiches and 3 finger food items and tea and coffee
- Mid-afternoon tea and coffee with sweet treat of the day
- Water served throughout the day

Venue hire 9am – 5pm

Cleaning, room set up and security.



Dinner Package

Enhanced Seated Dinner Menu £104 per person

- Room hire of main room and catering space
- Arrival glass of prosecco
- Enhanced 3 Course set menu dinner
- Half a bottle of wine per person
- Mineral water
- Tea, coffee and petit fours

Venue hire 6pm – 10pm

Cleaning, room set up and security.



Dinner Package

Seated Dinner Menu £96 per person

- Room hire of main room and catering space
- Arrival glass of prosecco
- 3 Course set menu dinner
- Half a bottle of wine per person
- Mineral water
- Tea, coffee and petit fours

Venue hire 6pm – 10pm

Cleaning, room set up and security.



Drinks & Party Package

Barrow Boy Food Stalls (£35 per person per 2 stalls)

Finish your event in style. These street food style concepts are each manned by a chef and are a fun, interactive take on traditional East End street traders. This is for a minimum of 50 people.

Choose from:

- Chicken Shack
- Brick Lane Topper
- Dirty Mac Bar
- Pie and Mash Bar
- Taco Shack
- Shawarma Bar
- Backyard BBQ
- Burger Shack
- Ploughman's
- Greek Street Mezze
- A welcome glass of prosecco
- 1 hour unlimited drinks (house wine, beer and soft drinks) +£18pp

Venue hire 9am – 5pm

Cleaning, room set up and security.





ENHANCE YOUR EVENT

Eclipse

Our on-site technology partners Eclipse, can provide you with a full bespoke quote for any Audio Visual, theming and branding requirements you may have. No project, whether a corporate event, live production, conference or product launch is too big or too small for Team Eclipse.

Packages can include a range of features to suit any event, such as:

- Central and relay screens
- Clickers
- Speakers or sound systems
- Lecterns
- Laptop hire, and
- On-site technicians

AV Packages start from £2,150.

Contact Details

VPMangement@eclipse.global



Eclipse

[Learn More](#)



Stadium Tours

Add to your guests' experience with a stadium tour, where you'll visit the West Ham FC dressing room, players' tunnel, and go pitch side for incredible views of the bowl. Enjoy our recently added exhibition of the 2012 Olympic Games, where you can see the official Olympic torch and iconic memorabilia, such as the original running track and the few surviving sculptures of the mascot, Wenlock.

[Learn More](#)

£16+ VAT
60-75 min pp

£14+ VAT
30-40 min pp

Based on a
minimum of
20 guests.



Branding Opportunities

London Stadium has one of the largest external LED screens in Europe, which can be branded for your event. You can also benefit from:

- Mid- and lower-tier ribbon screening
- The pitch-side score board
- Static imagery on IPTVs, and
- Rolling static imagery on IPTVs

Enquire for more details.



Local Area

In the heart of the Queen Elizabeth Olympic Park, London Stadium is surrounded by a plethora of modern and accessible amenities. The area is host to a variety of hotels that can meet all accommodation and budget requirements, most under a 15 minute walk from the Stadium itself.

Westfield Stratford is the largest urban shopping and leisure destination in Europe, boasting over 250 shops, 65 restaurants and a 17-screen all-digital Vue cinema.

Quickly hop on a train into central London from Stratford Station or head further afield from Stratford International.

Westfield



Getting Here

ELIZABETH LINE

DLR

CENTRAL

Metropolitan

OVERGROUND

We have the luxury of being in the heart of London with excellent transport links to international travel hubs and the city centre.

For more info, see [our website](#).



By train – 20 minutes from Euston, St Pancras, and King's Cross, via Stratford Station.



By bus – bus lines 388, 308, 339, and D8 run to the stadium. See [our website](#) for more details.



By bike – Cyclists can use the London Cycle Superhighway, from central London to Stratford. [View full route](#).



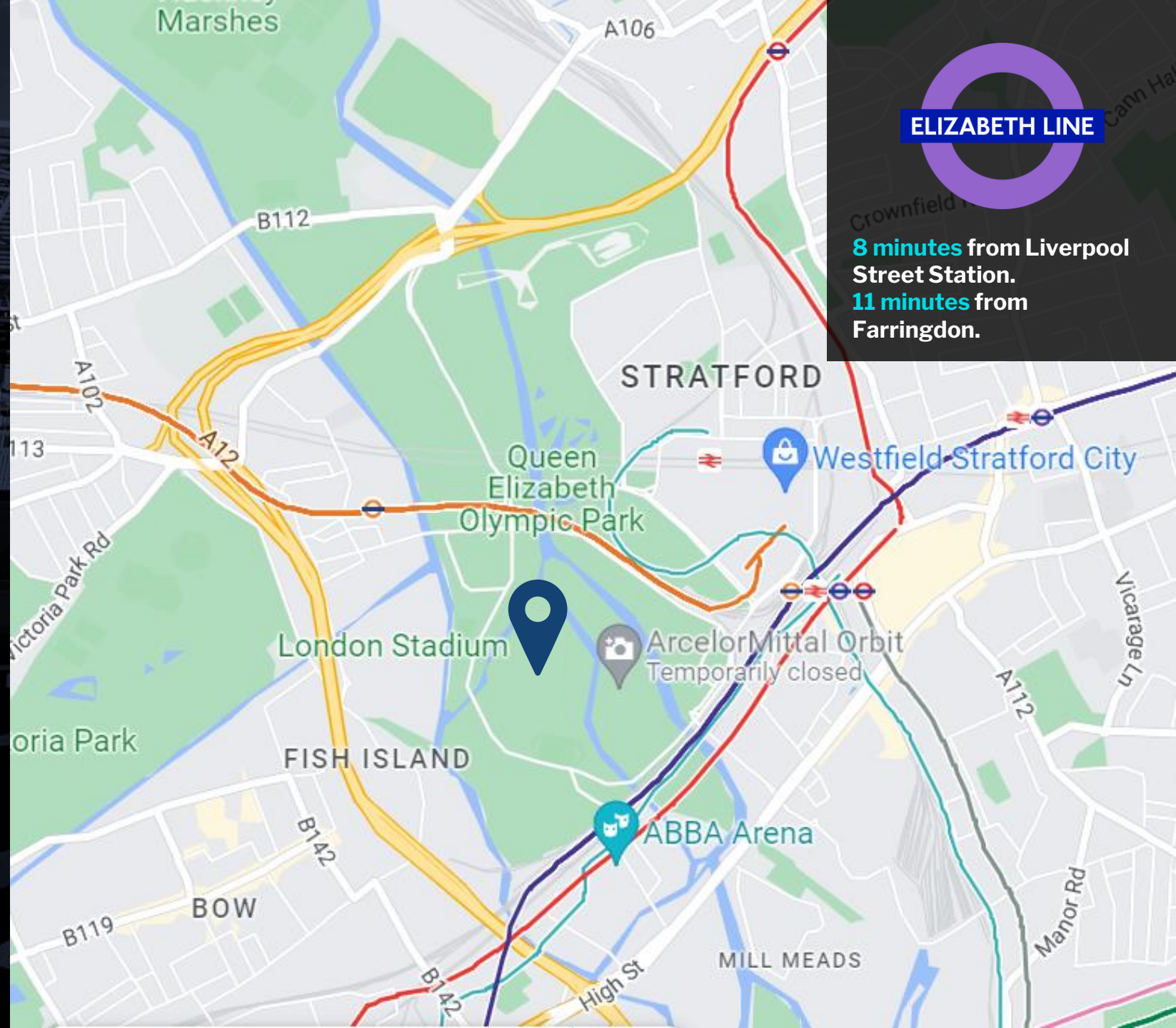
By car – Closest parking to the stadium is at Stratford Westfield. See [here](#) for more info on blue badge parking.



By taxi – Black cabs are available from Montfichet Road, outside the Northern Ticket Hall.



By plane – It's only an extra 20 minutes to your journey from Central London to Stratford from all nearby airports.



ELIZABETH LINE

8 minutes from Liverpool Street Station.
11 minutes from Farringdon.

CONTACT

London Stadium Meeting & Events

Lsevents@delawarenorth.com

0208 522 6139

London Stadium, Queen Elizabeth Olympic Park,
London, UK, E20 2ST

Terms of this Quotation:

1. Please note that the quotation is based on the information that has been provided to date. Additional charges may apply for extra tenancy hours and an increase in delegate numbers. A full list of further additional costs that may apply are available upon request.
2. Our terms and conditions of business are available from the Meetings & Events team upon request.
3. Any AV equipment or services booked through Encore will be charged on one invoice from Delaware North (Wembley Stadium).
4. This quotation is valid for 14 days.



We happily pay 8% commission on the net amount of food, beverage, venue hire and packages. Please note that audio visual equipment, cleaning, security and any other third party services are excluded. Please note that during your event time, views of the stadium bowl and stadium tours may be restricted in line with the pitch calendar.



LONDON
STADIUM

