



ASHTON LODGE

— COUNTRY HOUSE —



Exclusive Use Wedding Venue

About THE VENUE



VENUE FEATURES



- ✓ Exclusive Use
- ✓ Civil Ceremony Licence
- ✓ 2 Dressing Rooms
- ✓ In-House Catering
- ✓ Guest Accommodation
- ✓ In-House DJ
- ✓ Couples Access from 9am
- ✓ All Prices Include VAT
- ✓ Personal Wedding Manager
- ✓ Honeymoon Suite
- ✓ Outdoor Kitchen
- ✓ Dance Floor with Starlight Roof
- ✓ Licenced Bar Until Midnight
- ✓ Beautiful Gardens
- ✓ Outdoor Ceremonies
- ✓ Free WIFI
- ✓ Air Conditioned
- ✓ Car Parking

SEE OUR AMAZING GOOGLE REVIEWS



"Our guests had nothing but wonderful things to say about the venue, the staff, and the food. Everything about Ashton Lodge is just perfect and we are so grateful to have had such a wonderful experience."

Bradley Warwick

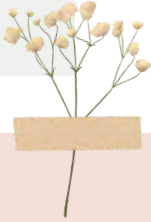


SCAN TO SEE
OUR REVIEWS

The morning OF YOUR WEDDING



Enjoy **exclusive early access to our spacious dressing room** from **9am** for you, your party, and your suppliers. **An extra dressing room is available** on request.



Did You Know?

You can order **breakfast** and **drinks** to your dressing room while you get ready!



SCAN HERE TO
SEE OUR MENU



We can accommodate up to **33 guests overnight** across **14 beautifully appointed bedrooms**, including our **romantic honeymoon suite**.

A dedicated breakfast room is available for all overnight guests the following morning.



The Bar AND LOUNGE

Our dedicated bar area can be open from **midday until midnight**, ready to keep the drinks flowing from the first toast to the final dance.



WHAT WE SERVE



Premium spirits and mixers

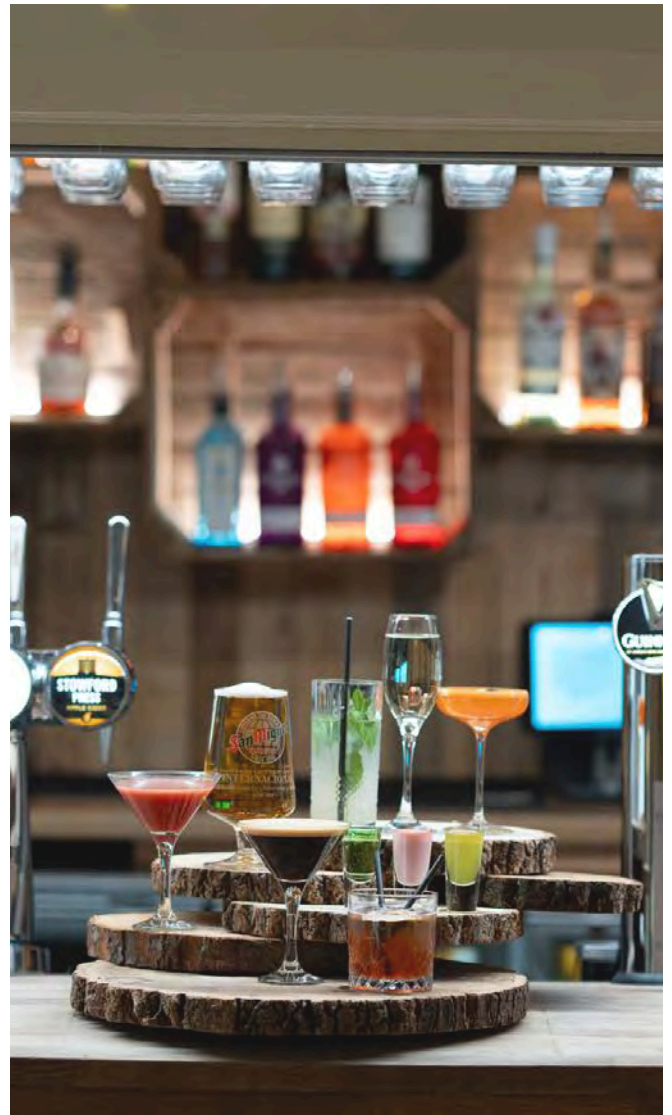
A selection of cocktails

Fine wines and Champagne

Draught and bottled beers

Alcohol-free alternatives

Soft drinks and hot beverages



The Garden ROOM

CAPACITY



Up To 120 Guests

The Ceremony Room at Ashton Lodge Country House which is licenced for civil ceremonies.



Did You Know?

We can help style your ceremony room with **elegant chair drapes, table runner, and a dressed arch**, all available **in-house**.



SCAN HERE TO
SEE OUR
HIRING ITEMS



The MARQUEE

CAPACITY



Seated Meal: Up To 156 Guests

Evening Guests: Up To 200 Guests

Our beautiful marquee is **fully heated** and **air-conditioned**, ensuring comfort for you and your guests all year round. We offer **in-house catering only**, with menus crafted by our talented chefs.

To elevate your celebration, we also provide **DJ & entertainment packages**, **table décor options**, and **customisable lighting**, allowing you to tailor the space perfectly to your wedding vision.



Did You Know?

You can elevate your marquee with our range of **finishing touches**, including **love letters**, **photo walls**, **lanterns**, **marquee lighting**, and even a **selfie station!**

Pair it with our **in-house table décor packages** for a beautifully styled setup that's ready to impress.



SCAN HERE TO
SEE OUR HIRING
ITEMS



The GARDENS



Did You Know?

Add a fun twist to your wedding with **fireside treats** and **garden games!**

Think toasted marshmallows, s'mores, and lawn games your guests will love.



SCAN HERE TO
SEE OUR GARDEN
HIRING ITEMS



The Venue AT DUSK

As the sun sets, our gardens come alive with a **warm glow from twinkling fairy lights**, creating a **magical atmosphere** for your evening celebrations.

Enjoy a relaxed walk under the glowing arches or **grab a slice from our Outdoor Kitchen**, it's the perfect way to end the day.



Did You Know?

We offer **in-house DJ & Entertainment Packages** to keep your party going all night!

With custom playlists, lighting, and optional extras, we'll make sure your evening feels exactly how you imagined.



SCAN HERE TO
SEE OUR
ENTERTAINMENT
EXTRAS



Our FOOD & DRINK

SCAN HERE



TO VIEW OUR MENUS

What makes us truly unique is our exceptional in-house catering, with high-quality ingredients, bespoke menus, and unforgettable flavours prepared by our talented chefs.

Our tailored drinks service, from signature cocktails to personalised wine selections, ensures every celebration is distinctive and memorable.





OUR PLANNING PROCESS

VIEWING



Our CONTACTS

We'd love to help you plan your perfect wedding at Ashton Lodge Country House.

Whether you're ready to book a viewing, have questions about our packages, or just need some friendly advice, our team is here to help every step of the way.

GET IN TOUCH WITH THE VENUE TEAM

01788 460 112

enquiries@ashtonlodgecountryhouse.com

www.ashtonlodgecountryhouse.com



@ashtonlodgecountryhouse



Rugby – 7 miles
Lutterworth – 7 miles
Coventry – 10 miles
Hinckley – 10 miles
Nuneaton – 11 miles
Warwick – 18 miles
Market Harborough – 19 miles
Leicester – 21 miles
Solihull – 26 miles
Northampton – 27 miles

5K+ Weddings Hosted
20+ Years of Experience

A PART OF

THE VENUE GROUP
WEDDING VENUE MANAGEMENT

Milling Barn

PLUM PARK
MANOR

REDHOUSE BARN

THE
GREAT BARN