



MANDRAKE

'The Mandrake is more than just a vibrant hotel, it's a cultural hub for like minded souls, we embrace the light and darkness, spirituality and decadence setting a stage for guests to immerse themselves into a mystical world of wonder.'

*- Rami Fustok  
Owner & Founder of The Mandrake*

## INDEX

### INTRODUCTION

### PRIVATE EVENTS

Jurema Terrace	009
The Greenhouse	018
Masha Hari Theatre	023
The Library	031
YOPO Restaurant & Bar	034
Private Dining Room	047
The Penthouse	048



## THE MANDRAKE

The Mandrake. A luxury lifestyle property in the heart of London's Fitzrovia, offering various ways to elevate any event. Award-winning design, artwork, and architecture that allows open-minded spirits to celebrate life in our multi-sensory realm.

Every aspect of The Mandrake has been thoughtfully curated and designed to offer guests a unique, immersive and truly unforgettable experience.

PRIVATE EVENTS



SUMMER

## JUREMA TERRACE

Jurema Terrace is designed by world renowned landscape architects Bureau Bas Smets and won **Best Outdoor Space** at the Global AHEAD Awards in 2019. Guests are welcomed to a laid-back cabana affair enveloped by a suspended garden of jasmine and passionflower overlooking The Courtyard with its soaring Tasmanian Ferns.

Size:

- Full Terrace: 121 m<sup>2</sup>
- Jurema North: 40.3 m<sup>2</sup>
- Jurema South: 49.5 m<sup>2</sup>

Capacity: Standing drinks reception, canapés & bowl food

- 110 Guests – Full Terrace
- 50 Guests – Jurema North
- 35 Guests – Jurema South

Key Features:

- Outdoor Terrace
- Hanging Garden
- Bar
- In-house Background Music

*\*Available Monday - Thursday during the months of May - September.  
\*Please note that the South Jurema Terrace is open to weather contingencies.*

# GLOBAL WINNER OF BEST OUTDOOR SPACE 2019

- AHEAD AWARDS

*At the heart of The Mandrake we have the AWARD-winning Jurema, designed by world renowned landscape architects Bureau Bas Smets.*



## WINTER JUREMA TERRACE

Step into the enchanting Jurema Winter Garden, a tailored glass venue perfect for private events and gatherings. Designed for intimate warmth during colder months, guests can enjoy faux-fur blankets, soft fairy lights, and a view of Jurema's hanging garden through the transparent roof.

Whether you're planning a standing reception or a seated dinner event, our Winter Garden adapts to your preferences.

### Size:

- Jurema North: 40.3 m<sup>2</sup>

### Capacity:

- 50 Guests – Standing drinks reception, canapés & bowl food
- 40 guests – Seated in long or round dining tables for plated breakfast, lunch & dinner (Furniture is subject to be hired)

### Key Features:

- Outdoor Terrace with Glass Structure
- Hanging Garden
- Bar
- In-house Background Music

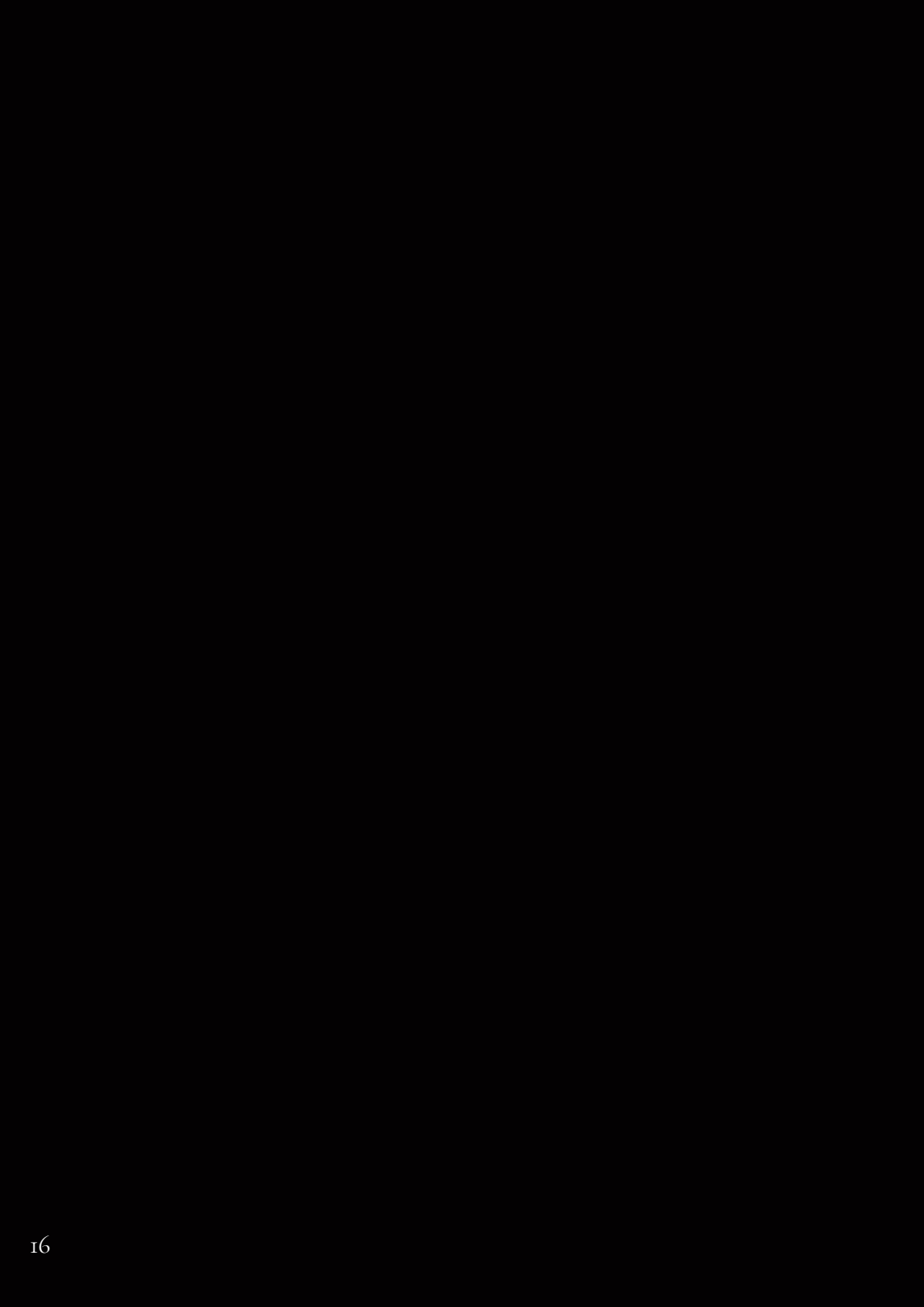
*\*Available Monday - Thursday during the months of November - March.*





*Enter the Jurema Winter Garden, a clandestine transformation of Jurema Terrace. Within this enchanting glass sanctuary, winter's allure takes center stage. Adorned with faux-fur opulence and the mystique of fairy lights, it's a secret haven for those attuned to the extraordinary. Join us in this seductive revelation—an experience tailored for the discerning soul.*





# THE GREENHOUSE

A beautiful glasshouse apothecary full of exotic medicinal plants. This intimate space offers a surrounding of natural lighting and privacy, ideal for press events, wedding proposals, private meals and drinks reception.

Size:

- 19.6 m<sup>2</sup>

Capacity:

- 8 guests – Standing drinks reception, canapés & bowl food or seated breakfast, lunch & dinner

Key Features:

- Background Music
- Semi-outdoor Space







## MASHA HARI THEATRE

The Theatre combines three major artworks and a vibrant bar perfect for private dinners, film screenings, live performances, parties and Q+A's. The West side of the theatre features a multiscreen sensor-activated piece that adapts to the activity in the room. To the North is our mural depicting The Legend of The Mandrake and to the South is an expression from one of the world's leading graffiti artists.

# MASHA HARI THEATRE

## Size:

- Stage: 7.9 m<sup>2</sup> – (2.2m Height)
- Floor: 65 m<sup>2</sup> – (2.2m Height)

## Capacity:

- 70 guests – Standing drinks reception, canapés & bowl food
- 25 guests – Lounge or theatre style – screening & projection
- 30 guests – Seated in long or round dining tables for plated breakfast, lunch & dinner (all furniture to be hired)

## Key Features:

- Stage
- DJ Deck
- State of the Art Audio + Visual Equipment
- Open Floor Plan









## THE LIBRARY

Discover our secret pocket of luxury and opulent textures in the Library. Collections of the past, reflections of the present and inspirations of the future create an intimate space that's well-suited for intimate drinks receptions and meetings.

Size:

- 25 m<sup>2</sup>

Capacity:

- 30 guests – Standing drinks reception, canapés & bowl food – meetings or press events
- 24 guests – Seated in existing set up – meetings or press events

Key Features:

- Intimate Private Setting
- Lounge-style Seating
- State of the Art Audio

*\*Available Monday - Thursday*





# YOPO

Inspired by South American cuisine, Executive Chef George Scott-Toft curates a menu encompassing memorable flavours of his travels through Argentina, Chile and Peru. Indigenous Amazonian ingredients and low-intervention Argentinian wines complete the experience which boasts vibrancy, balance and is a feast of food and culture.

## Size:

- YOLO Restaurant: 89.7 m<sup>2</sup>
- YOLO Bar: 52.2 m<sup>2</sup>

## Capacity:

- 130 guests – YOLO Restaurant and Bar – Standing for drinks reception, canapés and bowl food
- 60 guests – YOLO Restaurant – Seated for plated breakfast, lunch & dinner
- 40 guests – YOLO Bar - Standing for drinks reception, canapés and bowl food

## Key Features:

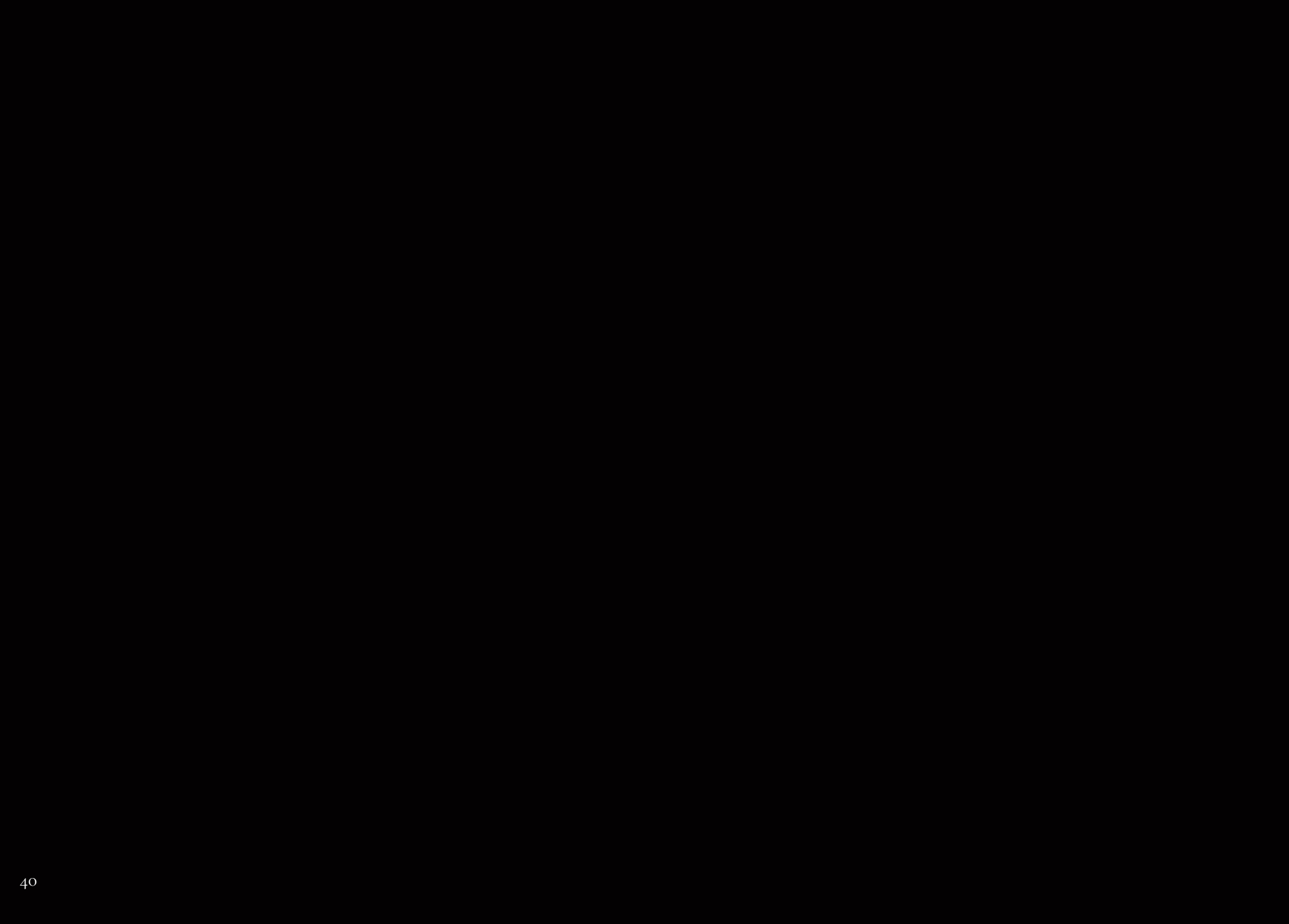
- DJ Deck
- Cloak Room
- Open Floor Plan
- Natural Light

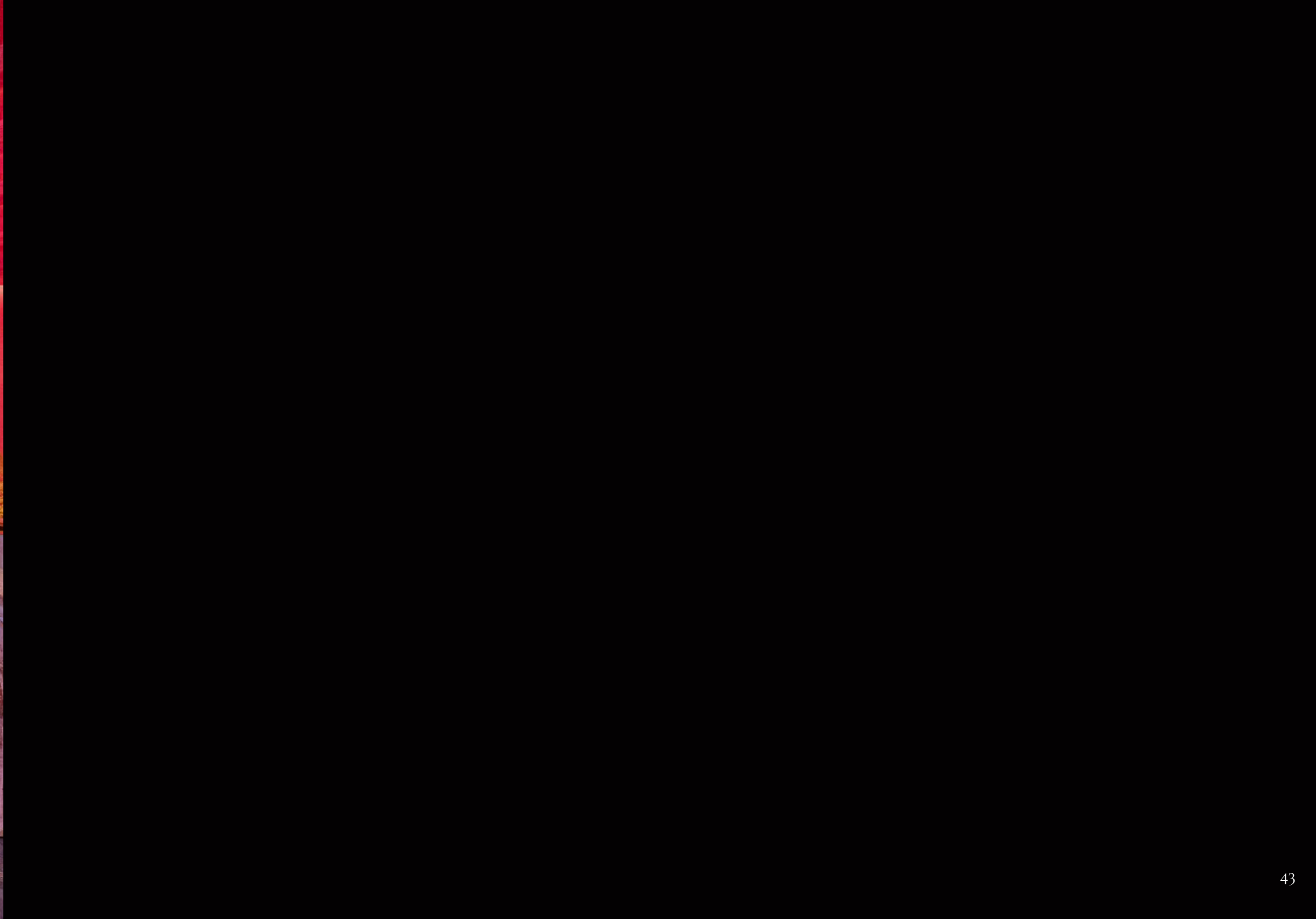
*\*Available Monday - Thursday*















## PRIVATE DINING ROOM

The Private Dining Room is an exquisite, red lacquered space in which twenty-eight individual paint processes have been used to create this extravagant and distinguished backdrop ideal for private gatherings, meetings, private dinners and events.

Size:

- 33.5 m<sup>2</sup>

Capacity:

20 guests – Seated breakfast, lunch & dinner

Key Features:

- State of the Art Audio + Visual Equipment



# THE PENTHOUSE

The one. The only. The Penthouse has welcomed some of the world's most acclaimed faces. Actors, musicians, directors and artists have all called this marbled, opulent and lavish space their 'home' during their time spent in London.

A dashing contemporary suite on the top floor of the hotel – flooded with rooftop light, encased in white Veronese bookended marble, and a private terrace with birds eye views of Jurema. Fitted for press events, private celebrations and launch parties.

Size: 128 m<sup>2</sup>

Capacity:

- 35 guests – Standing drinks reception, canapés & bowl food
- 8-person dining table

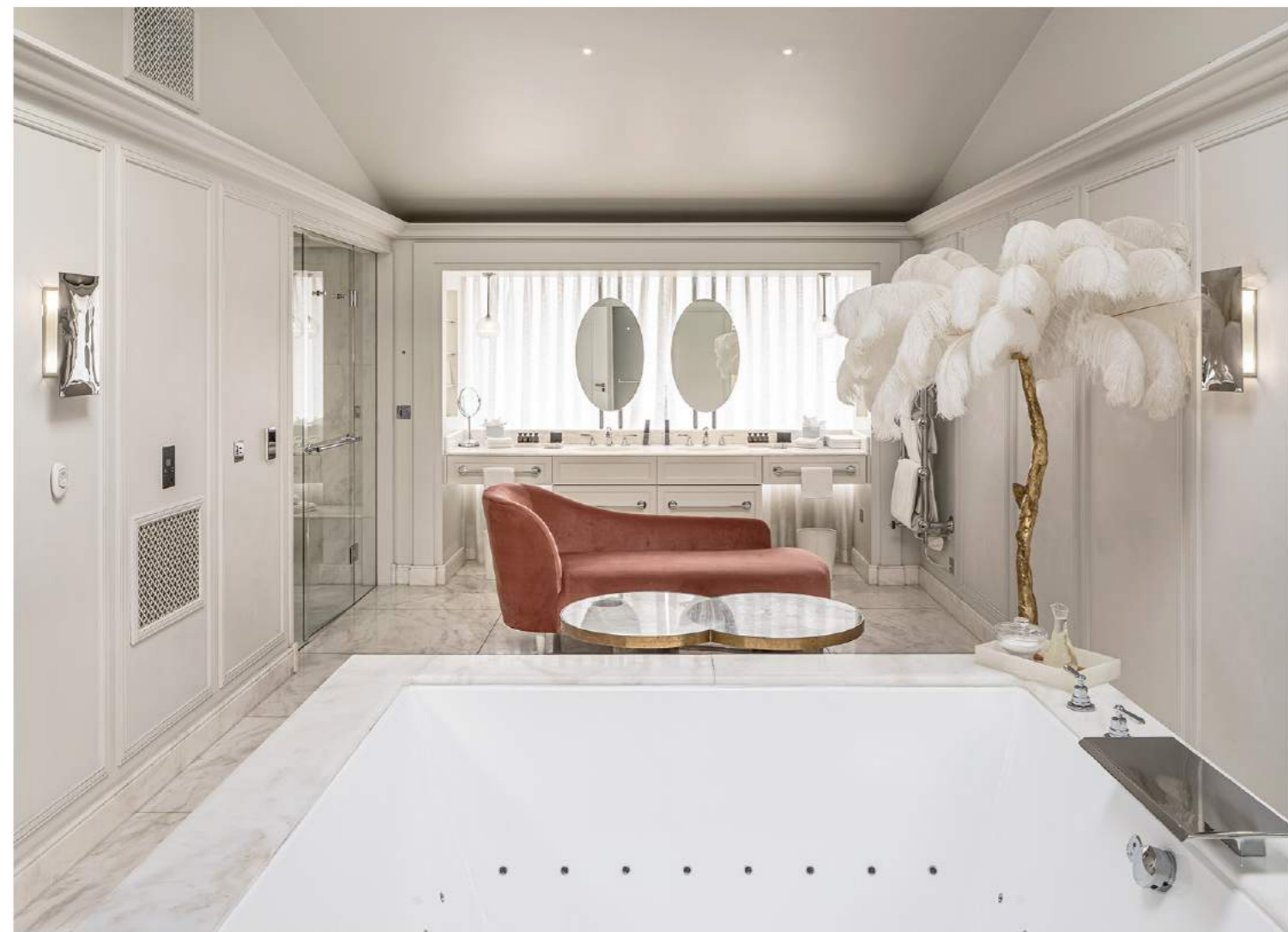
Key Features:

- State of the Art Audio + Visual Equipment
- Large Jacuzzi Bath
- DJ Deck
- Semi-Private Terrace
- Natural Light









# CONTACT DETAILS

For events, photoshoot/film and all general enquiries please contact [events@themandrake.com](mailto:events@themandrake.com)

The Mandrake  
20-21 Newman Street  
London, W1T 1PG  
United Kingdom  
Tel: +44 (0)203 146 7770

[www.themandrake.com](http://www.themandrake.com)

Instagram: [@themandrakehotel](https://www.instagram.com/themandrakehotel) [@yopo.london](https://www.instagram.com/yopo.london)  
Facebook: [Facebook.com/themandrakehotel](https://www.facebook.com/themandrakehotel)  
Soundcloud: [Soundcloud.com/mandrake-hotel](https://www.soundcloud.com/mandrake-hotel)



MANDRAKE

20-21 NEWMAN STREET, LONDON W1T 1PG