

The Loading Bay, Shoreditch

An open plan, dry hire event space in the heart of London's tech scene.



Map



The Loading Bay, 25 Luke St, Techspace Shoreditch, London, EC2A 4DS



0.3 miles to Old Street station



0.7 miles to Moorgate station



0.3 miles to Shoreditch high street



0.5 miles to Liverpool Street station



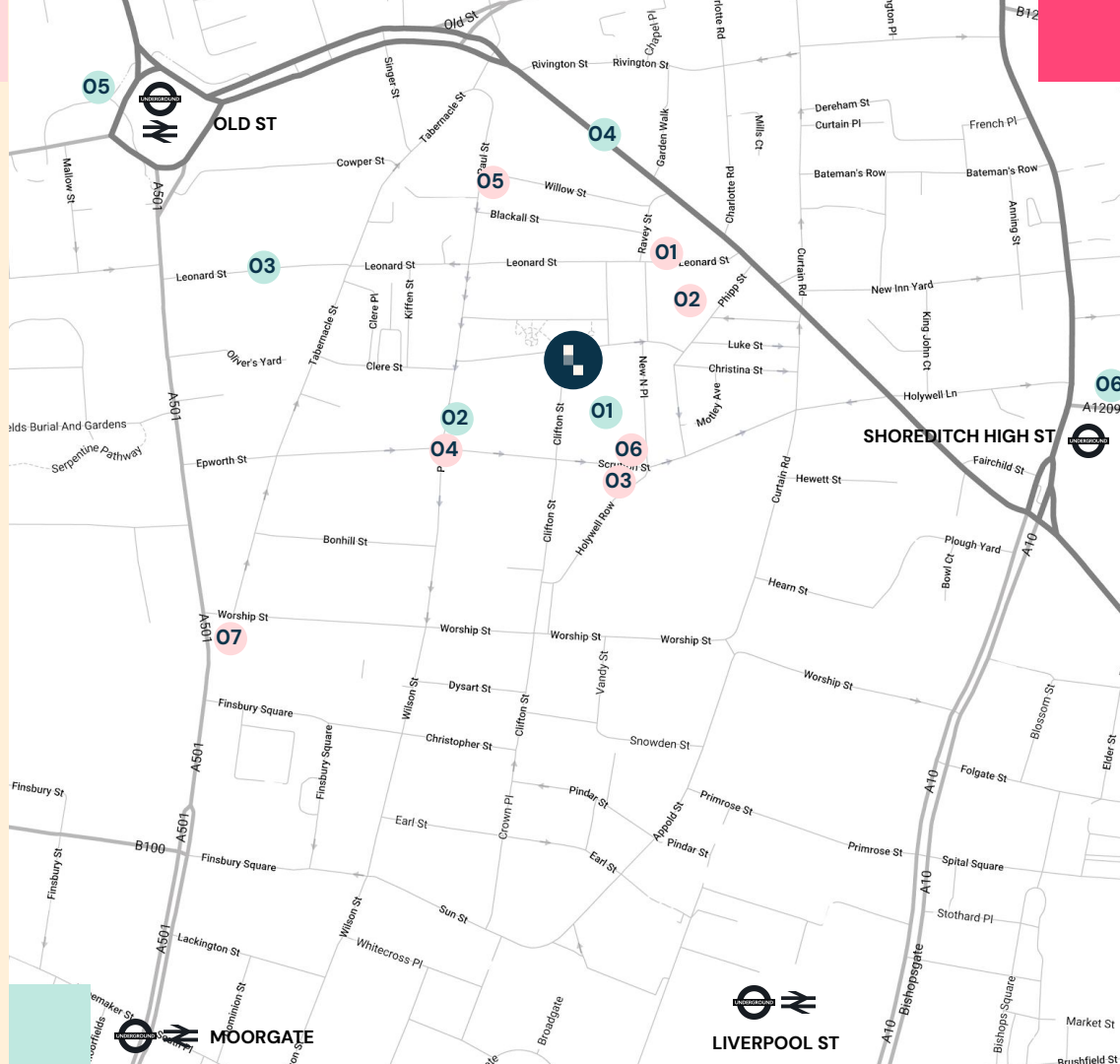
Café's

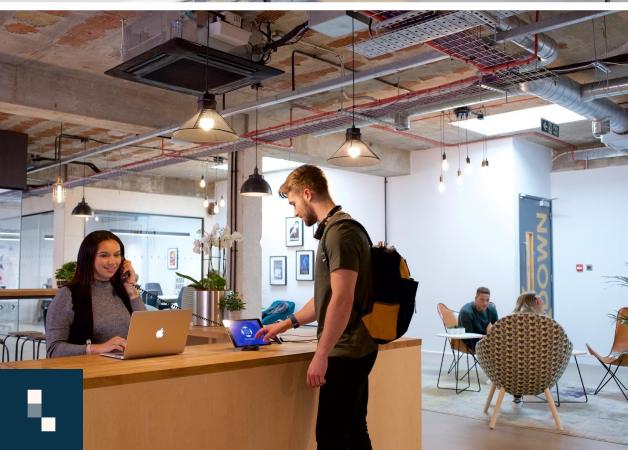


After work

- 01 Black Sheep
- 02 Alchemy
- 03 Ozone Coffee
- 04 Attendant
- 05 Shoreditch Grind
- 06 Lyle's

- 01 Griffin
- 02 The Book Club
- 03 Old King's Head
- 04 The Fox
- 05 Princess of Shoreditch
- 06 Padella
- 07 Flight Club





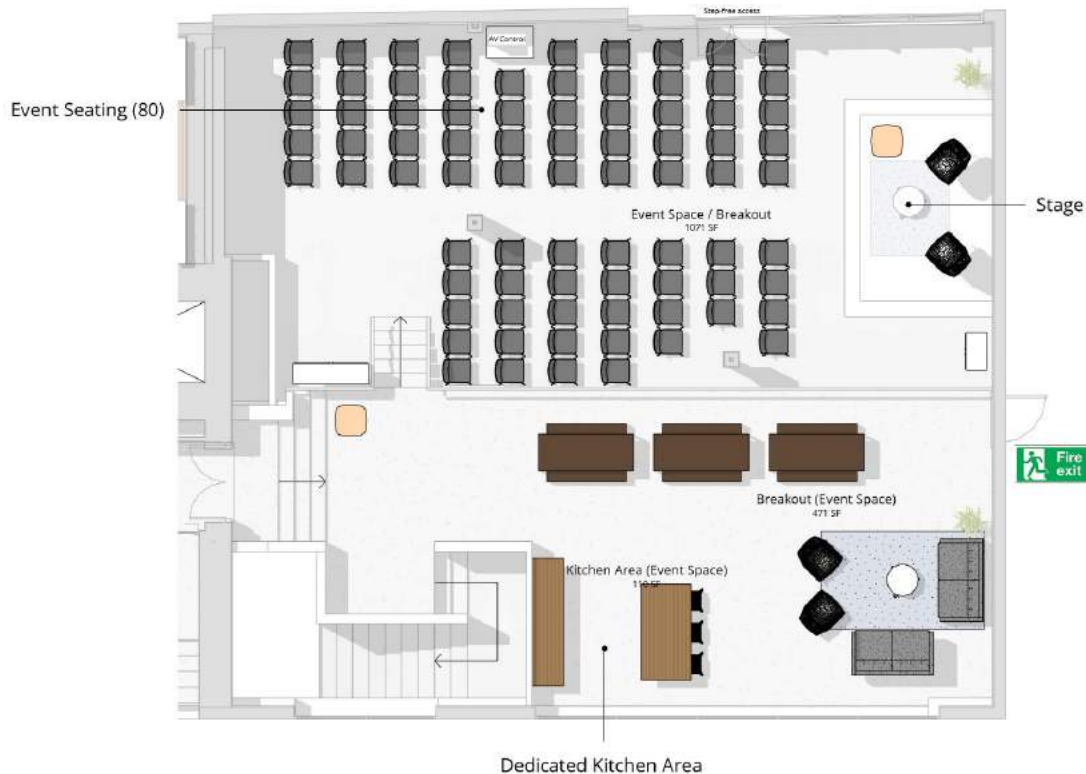


Space plan

The Loading Bay is a versatile event venue in the heart of East London. Part of Techspaces thriving ecosystem of scaling technology businesses, this space is perfect for conferences, workshops and networking events.

Sessions from £1,250.00 ex VAT

- Seating: <100 people (theatre style)
- Standing: <200 people
- Size: 2,000 sq ft



Event services



Catering

The Loading Bay is a dry hire venue only but our events team will be happy to help you choose a caterer from our preferred suppliers list. Alternatively you are more than welcome to bring your own.

£ POA



Additional furniture

Need something special to make your event just right. Request additional furniture and our team can quote this ad-hoc.

£ POA

Additional services



Videography

If you'd like to capture customer interviews on the day, or film the event B-roll? If so, we've got videographers ready to go.

£ POA



Photography

Need a professional photographer to capture your event in full flow? Tell us exactly what you want and we'll choose one of our preferred suppliers.

From £195.00 ex VAT per hour



Meeting rooms

Book meeting rooms at the venue to coincide with your event booking. A great way to add variety to your event, when one space is just not suitable.

From £50.00 ex VAT per hour



Live-streaming

Live-stream or record your event so you can reach a bigger audience. This is great for online workshops and international (inter-company) all-hands.

£ POA



Flexible layouts



Open plan

200 people standing

NO COST



Theatre style

100 people seated

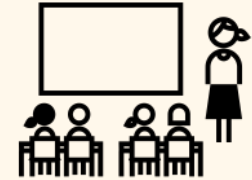
NO COST



Cabaret style

60 people seated
10 4ft round tables or 5 6ft round tables

£40.00 ex VAT per table hire fee



Other (on request)

Classroom setup
U-shaped arrangement

£ POA



Space amenities



1 Gbps Superfast Internet

Superfast WiFi and wired capability, with up to 1Gbps (up/down) speeds.



Handheld microphones

Microphones available to hire from £45 + VAT each.



Adjustable lighting & temperature

Configure your preferred temperature and lighting with A/C and dimmable lighting.



Refreshments

Tea + Coffee is available in the kitchen from £3 ex VAT per person (incl. dairy-free alternative).



4K TV (110 inch)

Present and live stream your content in high definition, on our four in one TV.



Ping Pong Tables

Available for hire to let your hair down. Just let us know in advance!



Sound system

Integrated sound system with mounted speakers throughout the space.



Acoustic sound insulation

Achieve clear and unaffected sound with perfect acoustic sound insulation.

Theatre



techspace

WiFi
with Techspace
membership
call us on
020 7547 1000

From stage



Breakouts



Split level

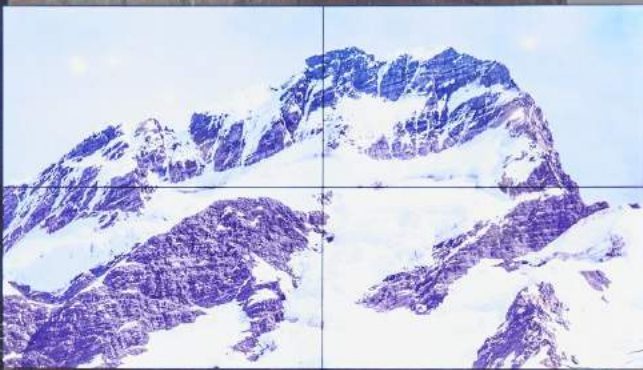


Cabaret



4K TV

techspace®



WiFi

room
Techspace
reception
call any room



Kitchenette



Catering



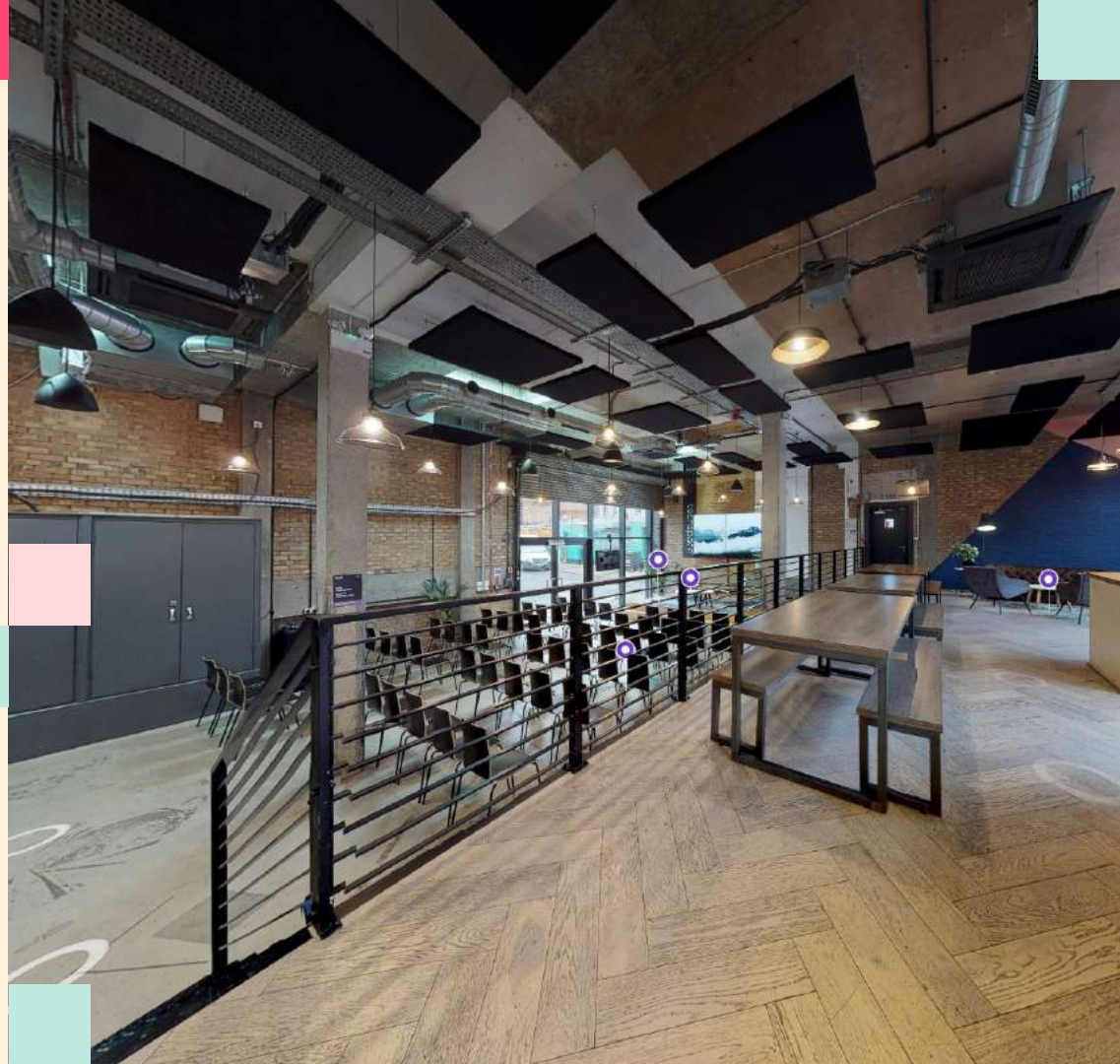
360° virtual tour

Jump into our virtual tour of The Loading Bay! Walk around without leaving home.

Click [here](#)



Matterport™



Have a query or want to book?
Get in touch to speak to our team

events@techspace.co

+44 (0) 20 3393 1081



thank you