



**MUSEUM  
OF LONDON  
EVENING HIRE  
MAIN SPACES**





## A PASSION FOR THE BEST EVENTS IN LONDON



Located in the heart of the City, the Museum of London is an extremely popular venue for evening receptions.

The beautifully designed event spaces which tell the incredible story of London and its people can be hired exclusively for corporate and private parties.

The state of the art facilities offer a capacity of up to 1000 guests for a reception or 400 for a dinner, fully supported by a dedicated events team.



## THE ENTRANCE HALL

Arriving in the striking Entrance Hall, guests will be greeted by our welcoming hosts.

The contemporary open space with futuristic bar can be used for a drinks reception before moving through to the Sackler Hall or as an event space in its own right.

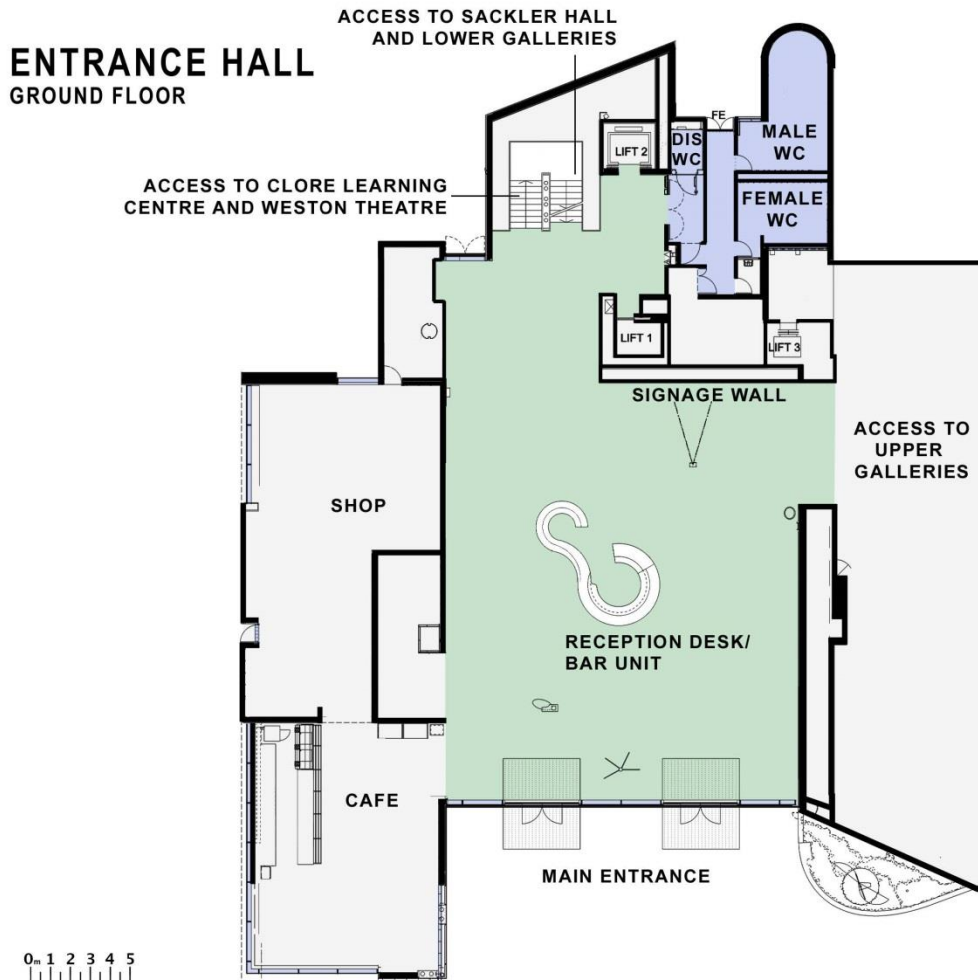
### Capacity

---

|   |             |
|---|-------------|
| <b>Reception</b>  | <b>400</b>  |
| <b>Dinner</b>   | <b>200</b>  |
| <b>Cabaret</b>  | <b>180</b>  |
| <b>Reception</b><br>combined with Galleries<br>and Sackler Hall | <b>1000</b> |

# ENTRANCE HALL

## Floor plan



### Additional information

- Integrated bar unit
- Wheelchair accessible
- WiFi
- Air conditioning
- Natural daylight
- Projector & screen
- 409sqm

ENTRANCE HALL 409 sqm





## THE SACKLER HALL

A unique event space in the heart of the museum with a show-stopping digital ellipse and plasma screen.

Choose from endless possibilities of showstates from a twinkling chandelier to your own bespoke display, perfect for award ceremonies and celebrations.

### Capacity

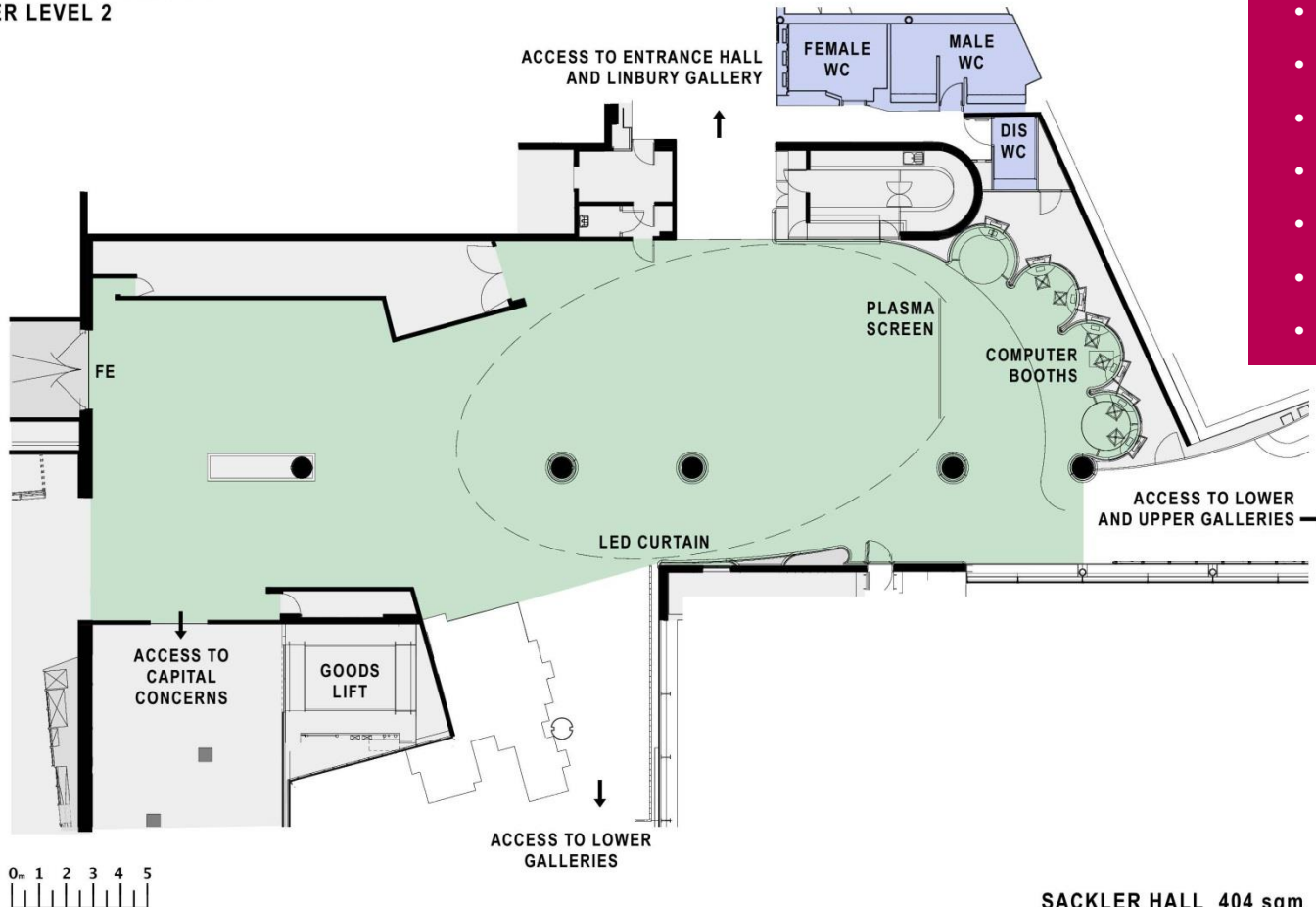
---

|  |             |
|--|-------------|
| <b>Reception</b>                         | <b>600</b>  |
| <b>Dinner</b>                            | <b>400</b>  |
| within the 360° LED ellipse              | <b>260</b>  |
| <b>Reception</b>                         |             |
| combined with Galleries and Sackler Hall | <b>1000</b> |

# SACKLER HALL

## Floor plan

### SACKLER HALL LOWER LEVEL 2



#### Additional information

- Wheelchair accessible
- WiFi
- Air conditioning
- Natural daylight
- 48m LED curtain
- 9 x 42" Plasma
- Staging and lectern
- 5.1 Audio System
- 3 Phase Power
- Pin spot lighting
- Relay camera
- 404sqm

SACKLER HALL 404 sqm





## THE GALLERIES



The award-winning galleries tell the amazing story of the world's most exciting city and its people have all been designed with events in mind.

Guests can experience London's history from 450,000 BC right up to the present day as they approach the main event space in the Sackler Hall.

More intimate events can be held in the museum's galleries using one or more spaces.



## GALLERY PACKAGES

Drinks receptions can take place in the stunning 17th century Pleasure Gardens. Guests will then move on to the Victorian Walk, strolling through streets from 150 years ago.

Dinner can be served in the People's City Gallery, next to the original art deco lift from Selfridges and 1903 taxi. The Mediaeval Gallery is a unique dining space for 30 guests.

### Capacity

---

**Reception**

**20 - 200**

**Dinner**

**20 - 70**





## THE LONDON 2012 CAULDRON

The Museum of London's newest gallery  
**Designing a Moment: The London 2012  
Cauldron** is now available for hire.

This is a unique opportunity to give your guests exclusive access to the London 2012 Cauldron as part of a breakfast or evening event. It can form part of a larger event or act as a venue in its own right.

### Capacity

---

|           |    |
|-----------|----|
| Reception | 70 |
| Dinner    | 50 |



# THE WESTON THEATRE

The Weston Theatre is a purpose built lecture theatre providing a high spec venue for presentations, award ceremonies and screenings.

It is fully equipped with PA, data projector, screen, lectern and an in-house technician.

The Theatre also offers full blackout facilities, air conditioning, WiFi and wheelchair access.

## Capacity

---

**Theatre**      **230**

**with additional space for  
wheelchairs**





## EXPERIENCES

### Table Curiosities

Historical artefacts from the museum's collection, the perfect dining table centrepiece.

### Tours

Any event can be complemented by a private talk or tour by one of the museum's curatorial experts.

Actors and actresses: can interact with guests to bring events to life.

### Retail

Delight your guests with goodie bags, containing exciting gifts sourced from the museum's shop





## CATERING OPTIONS



The Museum of London has a carefully selected choice of caterers who can provide you with bespoke menus.

We can provide:

- Drinks receptions & canapes
- Buffet & bowl food menus
- Banquets
- Barbecues and hog roasts

All special dietary requirements can be catered for.





## CATERERS



### **Ampersand**

020 3326 1220

[sales@ampersandevents.co.uk](mailto:sales@ampersandevents.co.uk)

[www.ampersandevents.co.uk](http://www.ampersandevents.co.uk)

### **Bubble**

020 7703 2653

[info@bubblefood.com](mailto:info@bubblefood.com)

[www.bubblefood.com](http://www.bubblefood.com)

### **Clerkenwell Green**

020 7729 4072

[naomi.cotton@clerkenwellgreen.com](mailto:naomi.cotton@clerkenwellgreen.com)

[www.clerkenwellgreen.com](http://www.clerkenwellgreen.com)

### **Create Food and Party Design**

020 8944 4954

[naomi.dobbin@createfood.co.uk](mailto:naomi.dobbin@createfood.co.uk)

[www.createfood.co.uk](http://www.createfood.co.uk)

### **Jackson Gilmour**

020 8665 1855

[francis@jacksongilmour.com](mailto:francis@jacksongilmour.com)

[www.jacksongilmour.com](http://www.jacksongilmour.com)

### **Moving Venue**

020 8691 6661

[paige@movingvenue.com](mailto:paige@movingvenue.com)

[www.movingvenue.com](http://www.movingvenue.com)

### **Party Ingredients**

020 7517 3500

[sales@partyingredients.co.uk](mailto:sales@partyingredients.co.uk)

[www.partyingredients.co.uk](http://www.partyingredients.co.uk)

### **Rocket Food Ltd**

020 7622 2320

[parties@rocketfood.net](mailto:parties@rocketfood.net)

[www.rocketfood.net](http://www.rocketfood.net)

### **Seasoned Events**

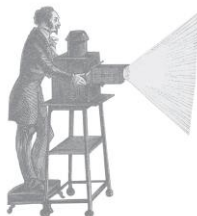
020 7236 2149

[enquiries@seasonedevents.co.uk](mailto:enquiries@seasonedevents.co.uk)

[www.seasonedevents.co.uk](http://www.seasonedevents.co.uk)



AV



### Ash Event Productions

01634 306180

[info@asheventproductions.co.uk](mailto:info@asheventproductions.co.uk)

[www.asheventproductions.co.uk](http://www.asheventproductions.co.uk)

### Broadsword

020 8776 5312

[info@broadswordgroup.co.uk](mailto:info@broadswordgroup.co.uk)

[www.broadswordgroup.co.uk](http://www.broadswordgroup.co.uk)

### Event Concept

020 7740 3988

[info@eventconcept.co.uk](mailto:info@eventconcept.co.uk)

[www.eventconcept.co.uk](http://www.eventconcept.co.uk)

### Firebird Events

01252 545 654

[enquiry@firebirdevents.co.uk](mailto:enquiry@firebirdevents.co.uk)

[www.firebirdevents.co.uk](http://www.firebirdevents.co.uk)

### Fisher Productions

020 8871 1978

[katek@fisherproductions.co.uk](mailto:katek@fisherproductions.co.uk)

[www.fisherproductions.co.uk](http://www.fisherproductions.co.uk)

### Whitelight

020 8254 4870

[events@whitelight.ltd.uk](mailto:events@whitelight.ltd.uk)

[www.whitelight.ltd.uk](http://www.whitelight.ltd.uk)

### Wise Productions

020 8991 6922

[events@wiseproductions.co.uk](mailto:events@wiseproductions.co.uk)

[www.wiseproductions.co.uk](http://www.wiseproductions.co.uk)





# FLORISTS



## **Gail Smith Flowers**

020 7739 3337

[info@gailsmith.co.uk](mailto:info@gailsmith.co.uk)

[www.gailsmith.co.uk](http://www.gailsmith.co.uk)

## **Hybrid Floristry**

020 7404 9889

[info@hybridflowers.co.uk](mailto:info@hybridflowers.co.uk)

[www.hybridflowers.co.uk](http://www.hybridflowers.co.uk)

## **Lavender Green**

020 7127 5303

[sue@lavendergreen.co.uk](mailto:sue@lavendergreen.co.uk)

[www.lavendergreen.co.uk](http://www.lavendergreen.co.uk)

## **Mary Jane Vaughan**

020 7385 8400

[info@maryjanevaughan.co.uk](mailto:info@maryjanevaughan.co.uk)

[www.maryjanevaughan.co.uk](http://www.maryjanevaughan.co.uk)

## **Pinstripes and Peonies**

07739 808 695

[ruari@pinstripesandpeonies.com](mailto:ruari@pinstripesandpeonies.com)

[www.pinstripesandpeonies.com](http://www.pinstripesandpeonies.com)

## **TUFF The Urban Flower Firm Ltd**

020 7252 3228

[tuff@theurbanflowerfirm.com](mailto:tuff@theurbanflowerfirm.com)

[www.theurbanflowerfirm.com](http://www.theurbanflowerfirm.com)



## WHY CHOOSE THE MUSEUM OF LONDON?



- Dedicated events team, including full AV support
- Unique, diverse and flexible event spaces, competitively priced
- Incorporate a tour or talk focusing on our fascinating exhibitions to make a truly memorable event
- After your event stay with us for a few drinks in London Wall Bar & Kitchen or hold your own private reception
- The Museum of London is a not-for-profit organisation. Our objective is to inspire a passion for London and learning among Londoners
- Fully accessible spaces, including garden areas
- Green venue – green roof initiative & rainwater recycling programme. We also carefully vet our caterers & suppliers
- Easily accessible by public transport
- You'll be in good company – our customers love to come back to us!





## PRICES

**Evening hire 6.30 pm – 11.00 pm**

---

All prices are subject to the addition of VAT at the standard rate.

Prices subject to alteration, please ask for a full quote.

Prices are available on request for AV upgrades, tours, gallery access, actors, object handling and Museum of London goody bags.

|   |                      |
|---|----------------------|
| <b>Weston Theatre</b>   | <b>£3,000</b>        |
| <b>Galleries package</b>  | <b>£5,500</b>        |
| <b>Entrance Hall and Sackler Hall</b>   | <b>£7,000</b>        |
| <b>Entrance Hall and Sackler Hall</b><br>with access to Upper or Lower Galleries for 1 hour | <b>£8,000</b>        |
| <b>Additional hour, p/h</b><br>until 1am  | <b>£1,000</b>        |
| <b>Entrance Hall and Sackler Hall</b><br>breakfast event (7am – 9.30am)                     | <b>£2,500</b>        |
| <b>Pre-set showstate on LED ellipse</b>   | <b>inclusive</b>     |
| <b>Table curiosities</b>  | <b>£60 per table</b> |



## CONTACT

**Museum of London**

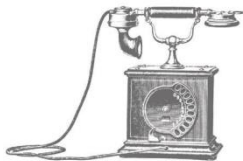
150 London Wall

London EC2Y 5HN

[venuehire@museumoflondon.org.uk](mailto:venuehire@museumoflondon.org.uk)

[www.museumoflondon.org.uk](http://www.museumoflondon.org.uk)

020 7814 5789



**Nearest stations:**

Barbican

St Paul's

Moorgate