



**MUSEUM
OF LONDON
EVENING HIRE
MAIN SPACES**



A PASSION FOR THE BEST EVENTS IN LONDON



Located in the heart of the City, the Museum of London is an extremely popular venue for evening receptions.

The beautifully designed event spaces which tell the incredible story of London and its people can be hired exclusively for corporate and private parties.

The state of the art facilities offer a capacity of up to 1000 guests for a reception or 400 for a dinner, fully supported by a dedicated events team.



THE ENTRANCE HALL

Arriving in the striking Entrance Hall, guests will be greeted by our welcoming hosts.

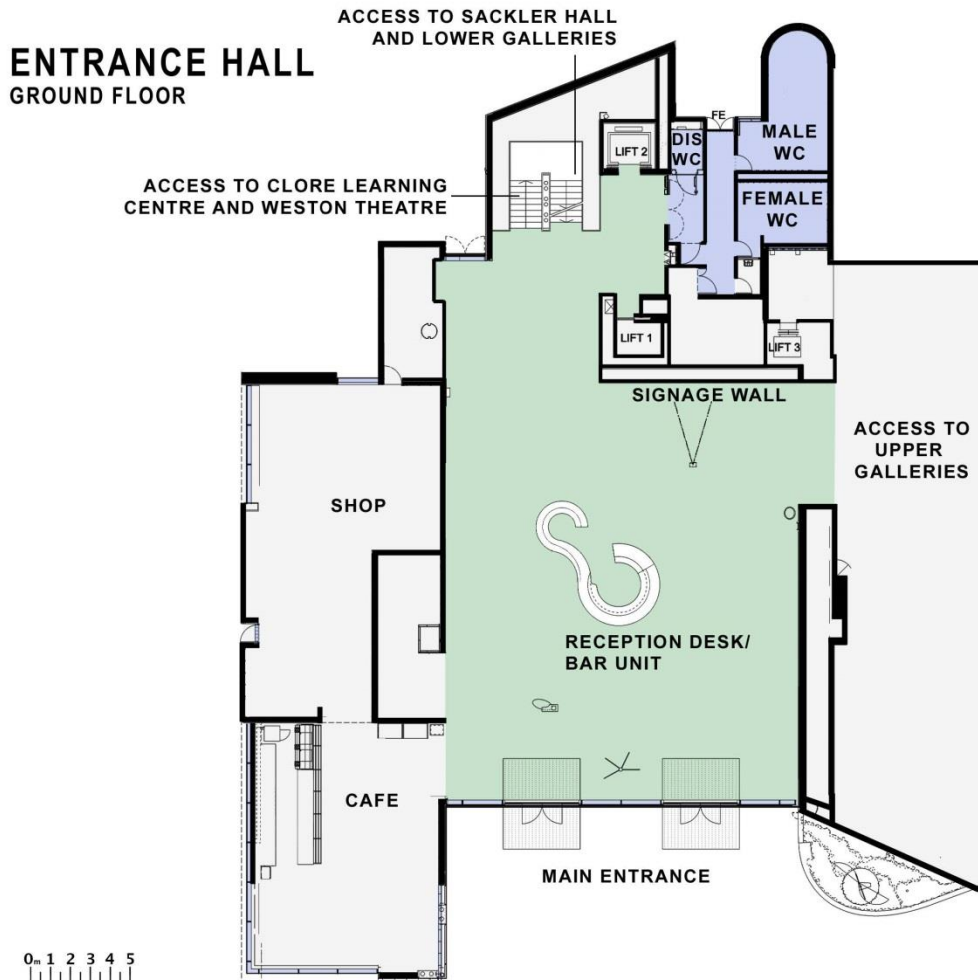
The contemporary open space with futuristic bar can be used for a drinks reception before moving through to the London Ellipse Hall or as an event space in its own right.

Capacity

Reception	400
Dinner	200
Cabaret	180
Reception combined with Galleries and London Ellipse Hall	1000

ENTRANCE HALL

Floor plan



Additional information

- Integrated bar unit
- Wheelchair accessible
- WiFi
- Air conditioning
- Natural daylight
- Projector & screen
- 409sqm

ENTRANCE HALL 409 sqm



THE LONDON ELLIPSE HALL

A unique event space in the heart of the museum with a show-stopping digital ellipse and plasma screen.

Choose from endless possibilities of showstates from a twinkling chandelier to your own bespoke display, perfect for award ceremonies and celebrations.

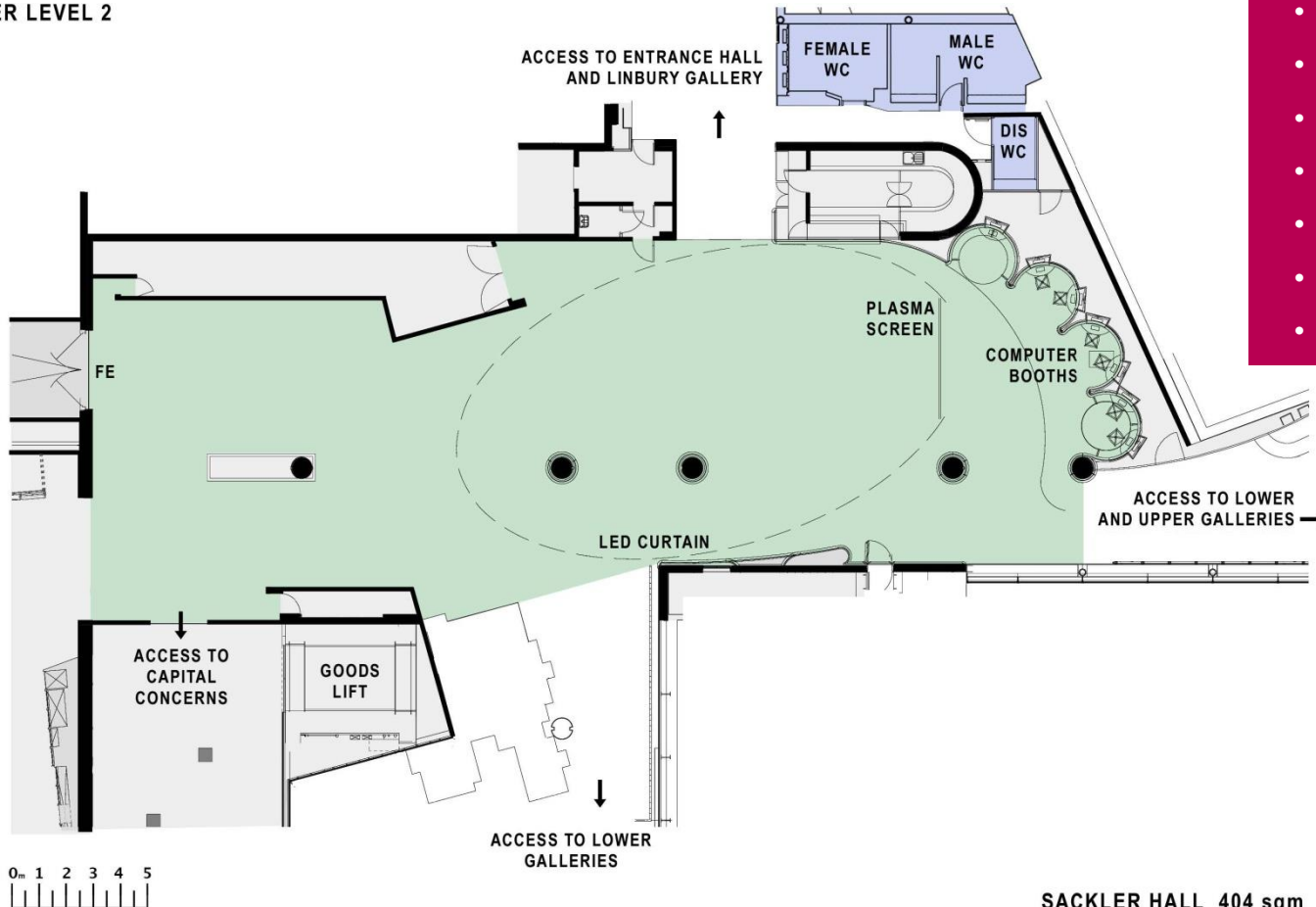
Capacity

Reception	600
Dinner	400
within the 360° LED ellipse	260
Reception	
combined with Galleries and London Ellipse Hall	1000

LONDON ELLIPSE HALL

Floor plan

LOWER LEVEL 2



Additional information

- Wheelchair accessible
- WiFi
- Air conditioning
- Natural daylight
- 48m LED curtain
- 9 x 42" Plasma
- Staging and lectern
- 5.1 Audio System
- 3 Phase Power
- Pin spot lighting
- Relay camera
- 404sqm



THE GALLERIES



The award-winning galleries tell the amazing story of the world's most exciting city and its people have all been designed with events in mind.

Guests can experience London's history from 450,000 BC right up to the present day as they approach the main event space in the London Ellipse Hall.

More intimate events can be held in the museum's galleries using one or more spaces.



GALLERY PACKAGES

Drinks receptions can take place in the stunning 17th century Pleasure Gardens. Guests will then move on to the Victorian Walk, strolling through streets from 150 years ago.

Dinner can be served in the People's City Gallery, next to the original art deco lift from Selfridges and 1903 taxi. The Mediaeval Gallery is a unique dining space for 30 guests.

Capacity

Reception

20 - 200

Dinner

20 - 70



THE LONDON 2012 CAULDRON

The Museum of London's newest gallery
**Designing a Moment: The London 2012
Cauldron** is now available for hire.

This is a unique opportunity to give your guests exclusive access to the London 2012 Cauldron as part of a breakfast or evening event. It can form part of a larger event or act as a venue in its own right.

Capacity

Reception	70
Dinner	50



THE WESTON THEATRE

The Weston Theatre is a purpose built lecture theatre providing a high spec venue for presentations, award ceremonies and screenings.

It is fully equipped with PA, data projector, screen, lectern and an in-house technician.

The Theatre also offers full blackout facilities, air conditioning, WiFi and wheelchair access.

Capacity

Theatre 230

**with additional space for
wheelchairs**



EXPERIENCES

Table Curiosities

Historical artefacts from the museum's collection, the perfect dining table centrepiece.

Tours

Any event can be complemented by a private talk or tour by one of the museum's curatorial experts.

Actors and actresses: can interact with guests to bring events to life.

Retail

Delight your guests with goodie bags, containing exciting gifts sourced from the museum's shop





CATERING OPTIONS



The Museum of London has a carefully selected choice of caterers who can provide you with bespoke menus.

We can provide:

- Drinks receptions & canapes
- Buffet & bowl food menus
- Banquets
- Barbecues and hog roasts

All special dietary requirements can be catered for.



CATERERS



Blue Strawberry

020 7733 3151

lauren@bluestrawberry.co.uk
www.bluestrawberry.co.uk

By Word of Mouth

020 8871 9566

events@bywordofmouth.co.uk
www.bywordofmouth.co.uk

Caper & Berry

01483 427 521

Libby@caperandberry.co.uk
www.caperandberry.co.uk

Food by Dish

020 8269 0398

info@foodbydish.com
www.foodbydish.com

Seasoned Events

020 7236 2149

enquiries@seasonedevents.co.uk
www.seasonedevents.co.uk

Moving Venue

020 8691 6661

paige@movingvenue.com
www.movingvenue.com

Laguna

020 7579 9992

info@LagunaRestaurant.com
www.LagunaRestaurant.com

Kerb (street food)

020 3355 6874

hattie@kerb.com
www.kerbfood.com

Tony Page

020 8830 4000

Sarah@tonypage.com
www.tonypage.com



PRODUCTION & ENTERTAINMENT

Fisher Productions

020 8871 1979

samc@fisherproductions.co.uk
fisherproductions.co.uk

Broadsword

020 8776 5312

info@broadswordgroup.co.uk
broadswordgroup.co.uk

White Light

020 8524 4870

Museum.of.London@Whitelight.uk
VenuesWL.com

Light Motif

020 7183 5381

info@lightmotif.co.uk
lightmotif.co.uk

Full Circle

020 3848 7720

max@wearefullcircle.co.uk
wearefullcircle.co.uk

Young Guns

020 7495 6606

hello@younggunsgroup.com
younggunsgroup.com

Prelude

020 8660 6647

matt@preludeentertainment.co.uk
preludeentertainment.co.uk

Wise Productions

020 8991 6922

events@wiseproductions.co.uk
www.wiseproductions.co.uk



FLORISTS

Petal to the Metal

020 3797 1283

paul@petaltothemetalflowers.uk

petaltothemetalflowers.uk

Hayford & Rhodes

020 3130 9219

events@hayfordandrhodes.co.uk

hayfordandrhodes.co.uk

Pinstripes and Peonies

07739 808 695

ruari@pinstripesandpeonies.com

www.pinstripesandpeonies.com



WHY CHOOSE THE MUSEUM OF LONDON?



- Dedicated events team, including full AV support
- Unique, diverse and flexible event spaces, competitively priced
- Incorporate a tour or talk focusing on our fascinating exhibitions to make a truly memorable event
- After your event stay with us for a few drinks in London Wall Bar & Kitchen or hold your own private reception
- The Museum of London is a not-for-profit organisation. Our objective is to inspire a passion for London and learning among Londoners
- Fully accessible spaces, including garden areas
- Green venue – green roof initiative & rainwater recycling programme. We also carefully vet our caterers & suppliers
- Easily accessible by public transport
- You'll be in good company – our customers love to come back to us!



PRICES

Evening hire 6.30 pm – 11.00 pm

All prices are subject to the addition of VAT at the standard rate.

Prices subject to alteration, please ask for a full quote.

Prices are available on request for AV upgrades, tours, gallery access, actors, object handling and Museum of London goody bags.

Weston Theatre	£3,000
Galleries package	£5,500
Entrance Hall and London Ellipse Hall	£7,000
Entrance Hall and London Ellipse Hall with access to Upper or Lower Galleries for 1 hour	£8,000
Additional hour, p/h until 1am	£1,000
Entrance Hall and London Ellipse Hall breakfast event (7am – 9.30am)	£2,500
Pre-set showstate on LED ellipse	inclusive
Table curiosities	£60 per table



CONTACT

Museum of London

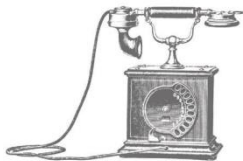
150 London Wall

London EC2Y 5HN

venuehire@museumoflondon.org.uk

www.museumoflondon.org.uk

020 7814 5789



Nearest stations:

Barbican
St Paul's
Moorgate