

  
**FARNBOROUGH**  
INTERNATIONAL

**EXHIBITION &  
CONFERENCE  
CENTRE**

***THE HOME OF PIONEERING SPIRIT***

# CONTENTS

- 05 WELCOME
- 06 THE HOME OF PIONEERING SPIRIT
- 08 YOUR VENUE OF CHOICE
- 10 LOCATION
- 11 ACCOMMODATION
- 12 ENDLESS POSSIBILITIES
- 14 TEAM FARNBOROUGH
- 17 HALL 1 - EXHIBITION HALL
- 20 DISCOVER
- 21 INSPIRE
- 22 INNOVATE
- 23 PIONEER
- 24 ADVANCE
- 25 NAVIGATE
- 26 LLOYD BOARDROOM
- 27 FLIGHT DECK
- 29 HALL 5
- 32 TESTIMONIALS
- 34 CONTACT DETAILS





# WELCOME

Farnborough is the birthplace of British Aviation and has been synonymous with pioneering triumphs for over a century.

The Farnborough International Exhibition & Conference Centre offers two outstanding purpose built facilities in a unique location alongside Europe's leading business airport. Our venue spaces have been designed and developed for the sole purpose of hosting events of all size. To add that extra pizzazz to your event, our venue offers ample personality with a spectacular runway backdrop. With the perfect mix of expertise, location and facilities we guarantee to make your event shine.



# THE HOME OF PIONEERING SPIRIT

Farnborough has a rich aviation history. The very first powered flight by Samuel Cody took off from here in 1908. It was home to the historic Royal Aircraft Establishment where Sir Frank Whittle conducted much of his research into jet aircraft. Today, this pioneering spirit continues through events that showcase the future.

**1906**  
Balloon factory moved to Farnborough

**1907**  
First wind tunnel opens

**1908**  
Samuel Cody's first powered flight



**1941**  
Frank Whittle's first jet-powered flight

**1937**  
First high speed wind tunnel

**1948**  
First Farnborough Airshow

**1945**  
Scale model of Miles M52 aircraft reaches mach 1.38 in UK

**1963**  
Invention of carbon fibre by RAE

**1970**  
Concorde debut at Farnborough

**1966**  
Cooperation with NASA on high altitude flight and spacesuits

**2008**  
Hall 5 facility opens

**2016**  
F35 debut at Farnborough

**2006**  
Airbus A380 debut at Farnborough

**2010**  
Boeing Dreamliner debut at Farnborough

**2018**  
Hall 1 facility opens

**FUTURE**  
Urban air mobility



# YOUR VENUE OF CHOICE

Our purpose-built venue reflects Farnborough's role as the birthplace of aviation and a well-known hub of innovation, making us an exciting, inspiring and very different location for events of all size.

## Home of pioneering spirit

Offering stunning views of the runway, our venue sits alongside Europe's leading business airport and at the home of the world-class Farnborough Airshow. We are a venue shaped around Farnborough, rich in history, as the birthplace of aviation and the home of pioneering spirit.

## Contemporary design

With a modern, industrial look and feel, our venue reflects innovation and sophistication. The unique spaces have been thoughtfully designed, enabling all types of events to be hosted in outstanding fashion.

## Leading technology

Our venue boasts cutting edge technology that will enhance the experience for your guests. Digital signage, super-fast connectivity and a team of in-house AV experts means your event will really stand out.

## Fully scalable

We pride ourselves on the versatility of the venue. We can transform our spaces to cater for events; from global exhibitions to a dedicated live event facility, to a business conference or a film set for a major feature film.

## Proven expertise

Farnborough offers decades of world-class experience and knowledge in organising major events, on-site event expertise and collaboration with leading event suppliers.

WELCOME TO  
HOME OF PIONEERING SPIRIT

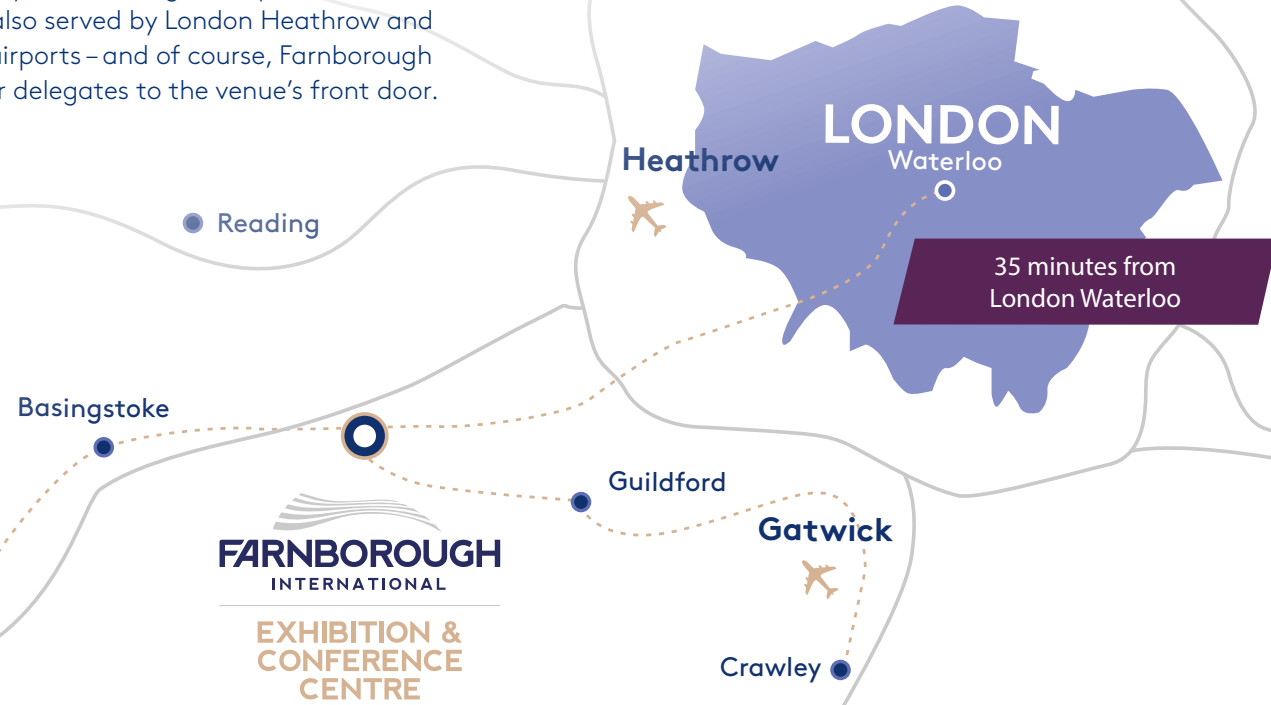
FARNBOROUGH  
INTERNATIONAL



# LOCATION

Conveniently located south-west of London, Farnborough International Exhibition & Conference Centre is served by strong national and international travel links.

At the heart of the M3's Sci-Tech corridor, Farnborough is one of the UK's top business districts. This means access to a strategically important and influential visitor base, many of which are engaged in the region's technical industries. Farnborough is located just 35 minutes from London Waterloo by rail – making it the perfect choice for accessibility. It is also served by London Heathrow and London Gatwick airports – and of course, Farnborough Airport can deliver delegates to the venue's front door.



# ACCOMMODATION

There's no shortage of excellent accommodation in and around Farnborough.

Farnborough boasts an impressive range of accommodation types offering 2,500 bedrooms within the immediate area and many more options in close proximity.





# ENDLESS POSSIBILITIES

Farnborough International Exhibition & Conference Centre offers an abundance of modern, fully flexible event spaces to create something special.

At Farnborough, we offer unique spaces for every event giving you ample opportunity to bring your vision to life. From world-class exhibitions to conferences and intimate business meetings, we've got the spaces and passion to maximise the success of your event. Our adaptable venue combines two halls both offering a sub-divisible blank canvas.

Hall 1 covers 20,000sqm of flexible, fully scalable spaces, including a 12,332sqm exhibition hall. Alongside our exhibition hall, you'll find a range of versatile conference, meeting and function rooms, generous breakout areas and adaptable outdoor spaces.

Hall 5 is made up of 3,150sqm of clear-span space. It is popular for hosting AGMs, product launches, annual dinners and a wide range of filming and photography sets.





# TEAM FARNBOROUGH

Our team of experts know what it takes to make great events happen. With a wealth of industry experience, we work closely with you to make your event a success.

And we have a big family! Our official suppliers have been hand selected to ensure you receive only the very best in value, best practice and customer satisfaction. Working together, our team will deliver an outstanding experience from start to finish.

We are very proud to be a venue that provides professional event management expertise gained through our years of creating and delivering the legendary Farnborough International Airshow.

## Customer Service Excellence

The WINGS training programme delivers bespoke training to ensure our service standards are embedded throughout the supply chain.



Our company values: partnership, precision and positivity, are at the core of these training programmes.

The Wings programme forms part of our commitment to Customer Service Excellence and ensures our customer service levels remain exemplary.







# HALL 1

Purpose built conference and exhibition venue, spanning 2 floors.





# HALL 1 - EXHIBITION HALL

Hall 1 is a multi-functional, exhibition and conference space which is fully scalable and able to host large exhibitions and conferences; to live experiential events, and major film shoots.

## Specification

↔↕	Length	260m
↔↕	Width	48m
	Area	12,332sqm

## Capacity

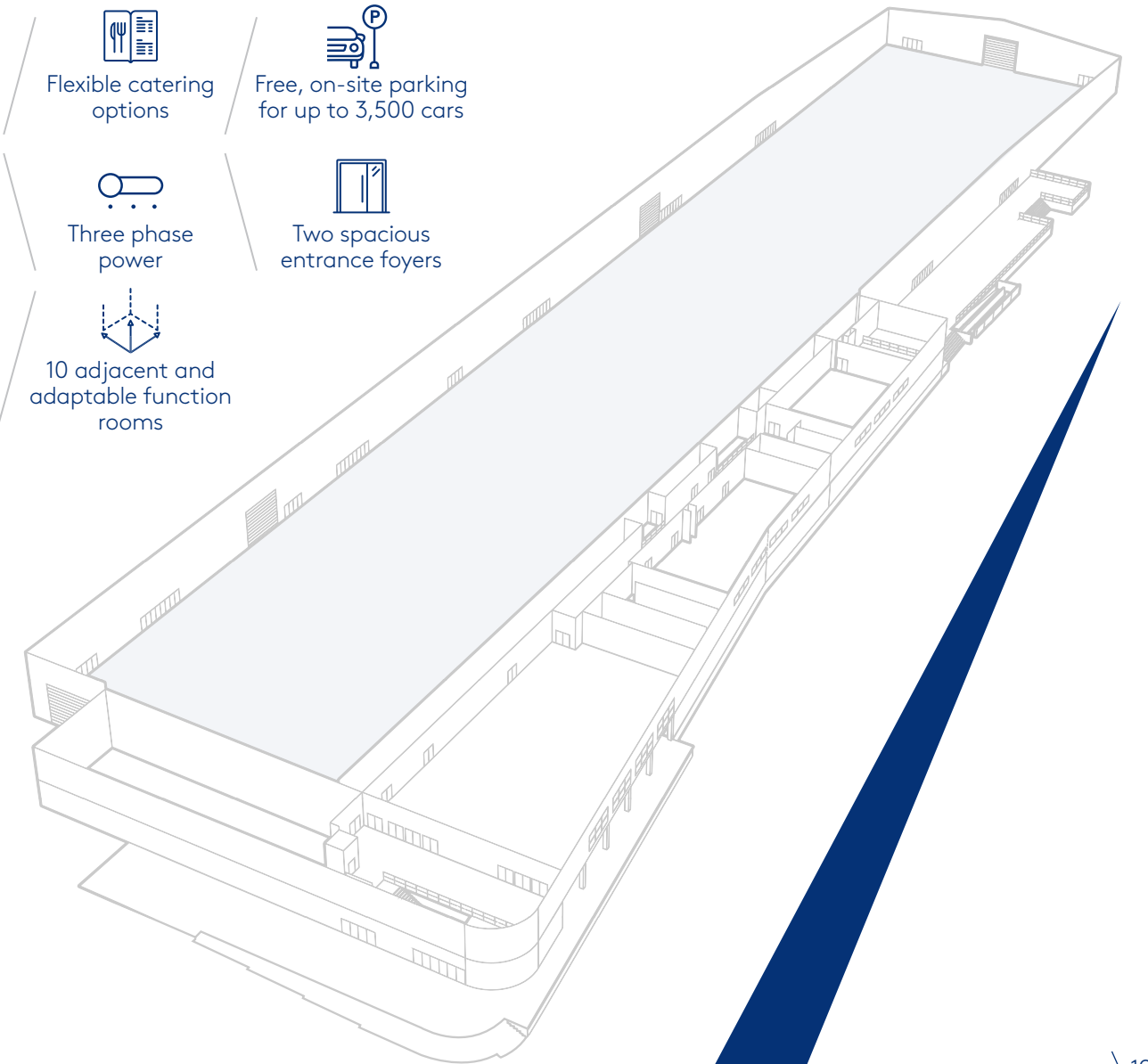
👥	Theatre	5,000
	Cabaret	3,000
	Banqueting	4,000
	Reception	10,000

## Suitable For

Exhibitions	Awards Ceremonies
Conferences	Live Events
Road Shows	Film and Photography Location



- Drive in access for easy set up
- Flexible catering options
- Free, on-site parking for up to 3,500 cars
- Pillar free event space
- Three phase power
- Two spacious entrance foyers
- Under floor ducts for services
- 10 adjacent and adaptable function rooms

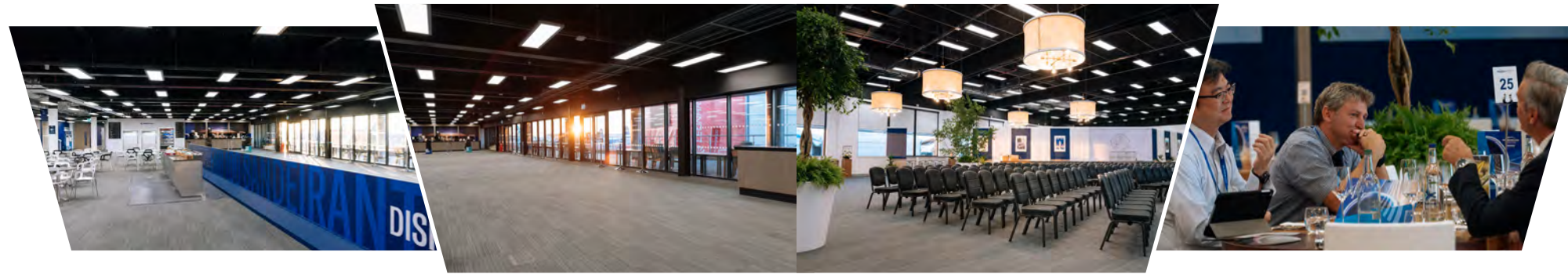




# DISCOVER

Multi-purpose ground floor event space

Benefiting from natural daylight and the convenience of direct access from the East Foyer, this multi-purpose Ground Floor event space provides the versatility to accommodate event registration or a networking space for large corporate events using either Hall 1 or Inspire. Discover can also support a full catering service for large exhibitions located within Hall 1. The space includes the Discover Terrace for stunning runway views.



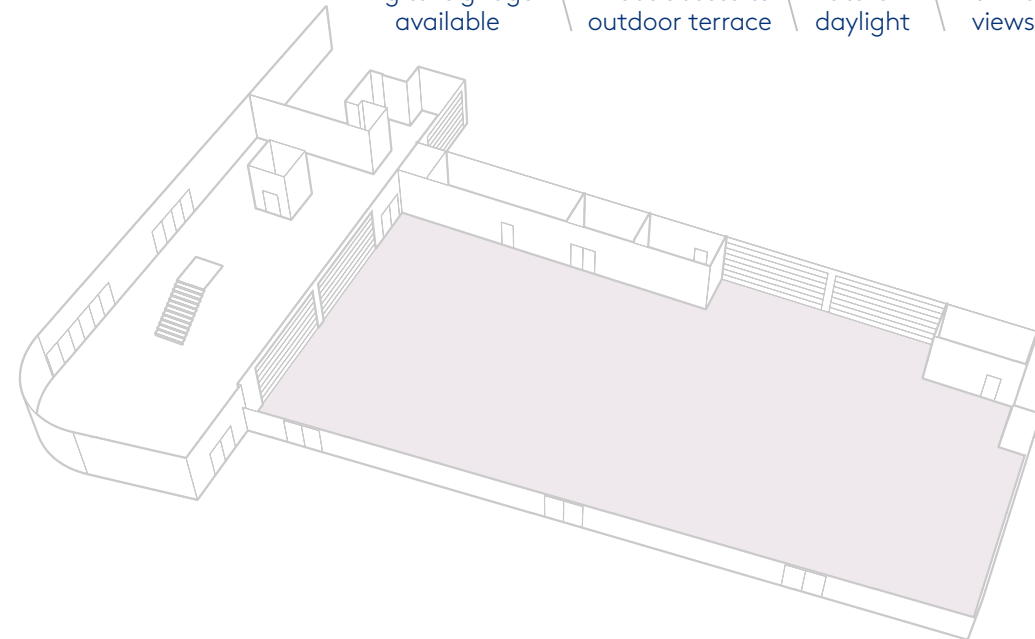
## Specification

	Length	44.7m
	Width	20.7m
	Area	850sqm

## Capacity

	Theatre	760
	Cabaret	420
	Banqueting	540
	Reception	850

- Digital signage available
- Direct access to outdoor terrace
- Natural daylight
- Runway views

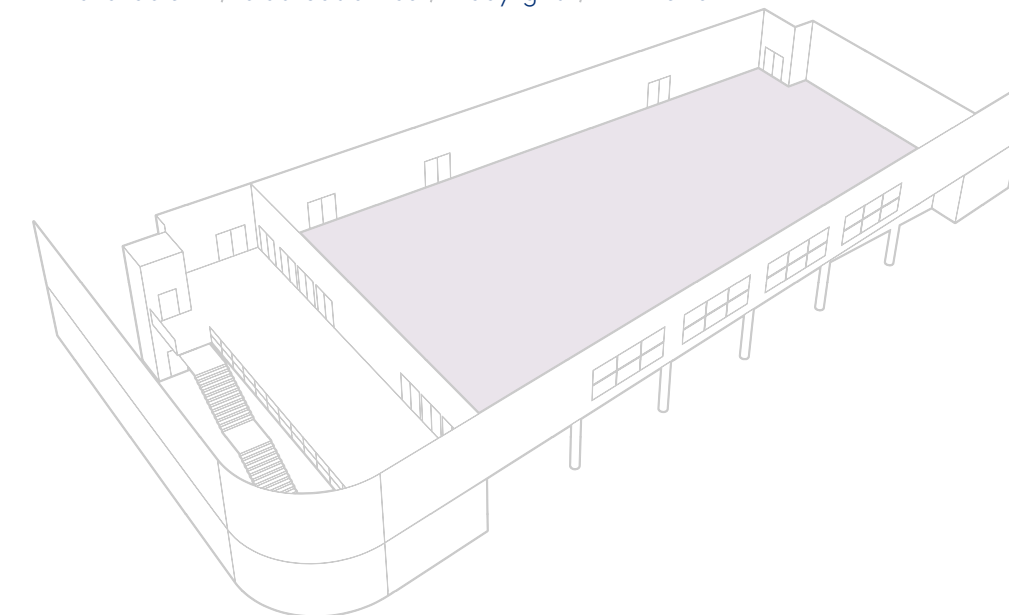


# INSPIRE

A conference space boasting magnificent runway views

Our largest conference space offers spectacular runway views and an abundance of natural daylight, ensuring an ideal setting for a variety of events. With a capacity of up to 950 guests theatre style or 700 banqueting, this versatile environment is ideal for large conferences and dinners. The distinctive, adaptable space offering high ceilings and blackout facilities is located on the First Floor and accessed via the East Foyer.

- Digital signage available
- Electronic blackout blinds
- Natural daylight
- Runway views



## Specification

	Length	44.8m
	Width	26.6m
	Area	1,000sqm

## Capacity

	Theatre	950
	Cabaret	560
	Banqueting	700
	Reception	1,000



# INNOVATE

A versatile space located on the first floor which can be divided to create two separate meeting rooms

A modern and versatile event space located on the First Floor. It is ideal for use as a conference for up to 360 guests. The space can be sub divided providing the ability to host individual events or used as breakout areas.



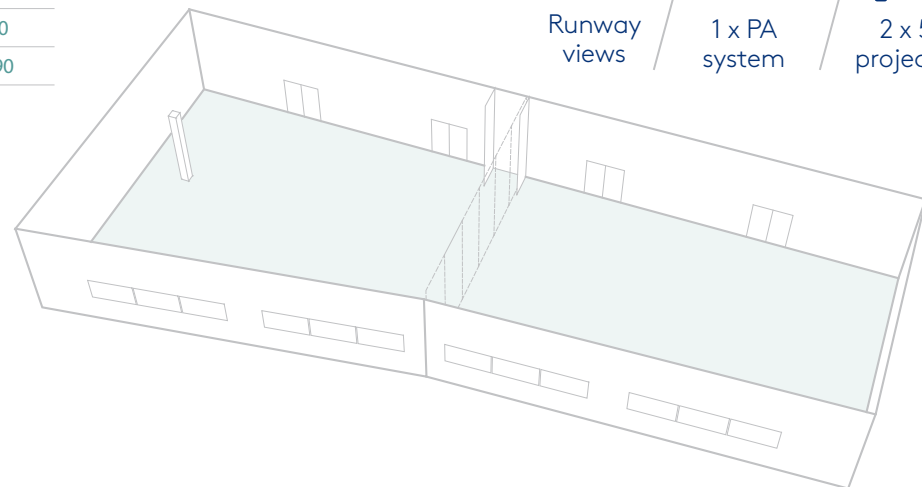
## Specification

	Length	33.7m
	Width	14.2m
	Area	400sqm

## Capacity

	Innovate	Innovate 1	Innovate 2
Theatre	360	180	170
Cabaret	200	100	95
Banqueting	250	130	120
Boardroom	-	40	40
Reception	400	200	190

- Digital signage available
- Divisible into two sections
- Electronic blackout blinds
- Natural daylight
- Runway views
- 1 x PA system
- 2 x 5K projectors



# PIONEER

An adaptable room on the ground floor which can be divided to create two separate meeting rooms

A modern and versatile space located on the Ground Floor. Great to host a conference for up to 360 guests, the space can be sub-divided to accommodate individual events or be used as breakout areas.

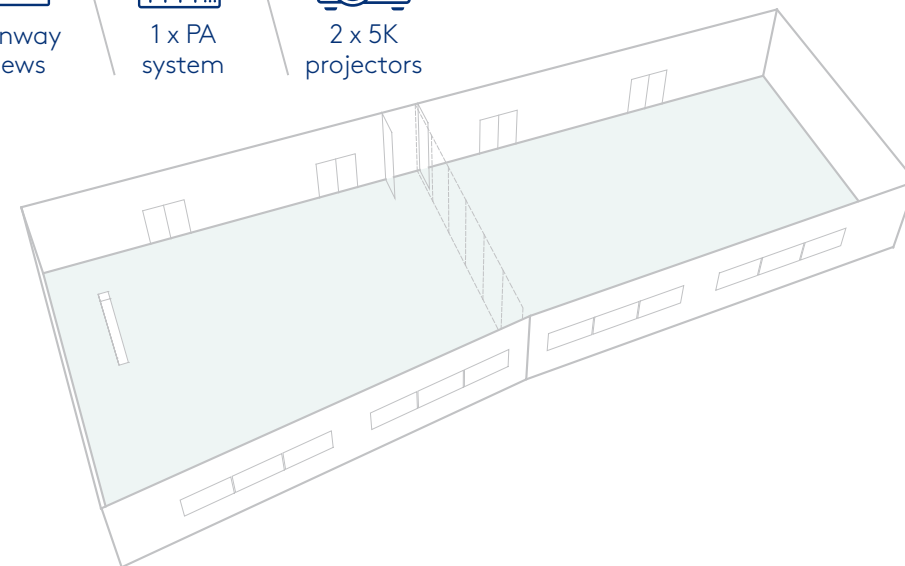
## Specification

	Length	33.7m
	Width	13.9m
	Area	400sqm

## Capacity

	Pioneer	Pioneer 1	Pioneer 2
Theatre	360	180	170
Cabaret	200	100	95
Banqueting	250	130	120
Boardroom	-	40	40
Reception	400	200	190

- Digital signage available
- Divisible into two sections
- Electronic blackout blinds
- Natural daylight
- Runway views
- 1 x PA system
- 2 x 5K projectors





# ADVANCE

A flexible space boasting magnificent runway views

This modern setting benefits from a lot of natural daylight. Located on the First Floor, it is accessible from the West Foyer. Advance makes a great space for banqueting for up to 180 or as a breakout area for up to 260 delegates as part of a larger conference. The space also has the added benefit of convenient access to the Flight Deck roof terrace above.

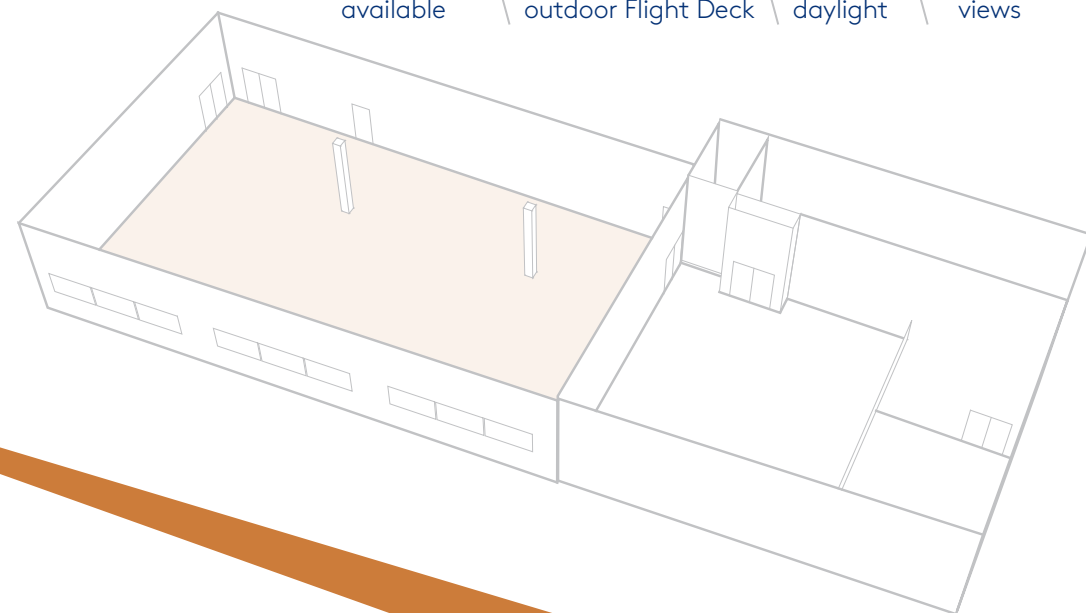


## Specification

	Length	22.2m
	Width	13.8m
	Area	290sqm

## Capacity

	Theatre	260
	Cabaret	140
	Banqueting	180
	Reception	290



- Digital signage available
- Direct access to outdoor Flight Deck
- Natural daylight
- Runway views

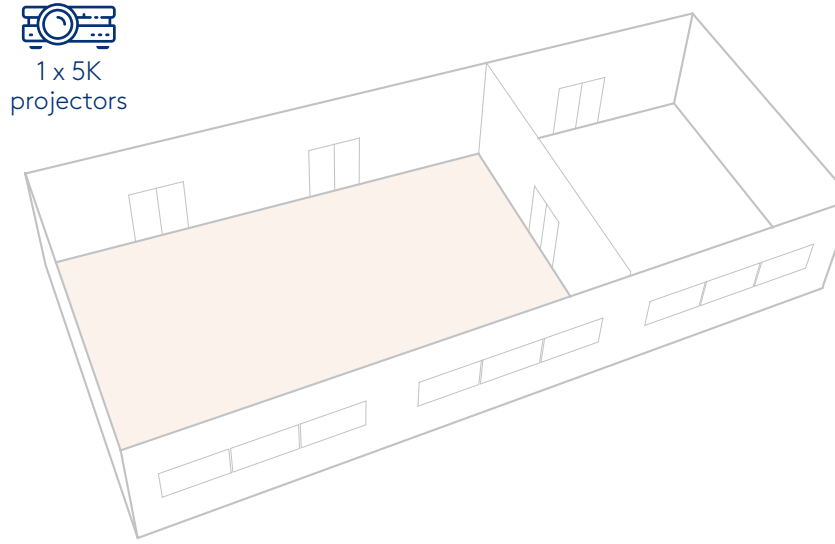
# NAVIGATE

A ground floor space close to the West Foyer

A Ground Floor location, this space is suitable for up to 126 guests theatre style, but can be configured in a variety of different ways depending on your needs. It's the perfect space for a conference, training session, presentation or a meeting. Interconnected with the Lloyd Boardroom, it can include a separate breakout or refreshment area.

- Digital signage available
- Electronic blackout blinds
- Interconnected with Lloyd Boardroom
- Natural daylight

- 1 x 5K projectors



## Specification

	Length	14m
	Width	11.5m
	Area	140sqm

## Capacity

	Theatre	126
	Cabaret	70
	Banqueting	80
	Boardroom	40
	Reception	140



# LLOYD BOARDROOM

A ground floor space ideal for small meetings or as a breakout area

This ground floor space is located close to the West Foyer entrance and is ideally used as a small meeting room, private dining space or as a convenient refreshment area for those using the Navigate event space next door.

## Specification

	Length	7.5m
	Width	9.2m
	Area	60sqm

## Capacity

	Theatre	50
	Boardroom	20
	Reception	60

- Digital signage available
- Electronic blackout blinds
- Interconnected with Navigate
- Natural daylight
- 86" screen

# FLIGHT DECK

An outdoor space boasting the best runway views

This outdoor terrace sits above Advance offering an additional feature for your event. It's an ideal space for a drinks reception or simply an opportunity for delegates to take in the stunning runway views.

## Specification

	Length	16.8m
	Width	12m
	Area	60sqm

## Capacity

	Reception	180
--	-----------	-----

- Drinks reception
- Runway views







# HALL 5

The Hall 5 facility lends itself well as a flexible site and surroundings with an unbranded pillar free interior.



# HALL 5

Hall 5 has been staging successful events since 2008. With 3,150sqm of clear span, unbranded space, you can completely tailor the area to your vision.

A blank canvas, ground floor, exclusive hire venue offering unrestricted space for any event. Free parking, drive in access, two entrance foyers and large kitchens provide major scope for events up to 3,000. The venue can be divided into two halves by means of an electronic curtain. Included within rental of Hall 5 are the Mezzanine Space and Office.



Suitable For	
Exhibitions	AGMs
Product Launches	Annual Dinners
Conferences	Filming
Christmas Parties	

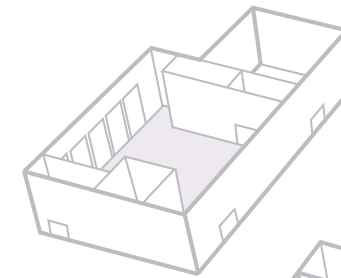
## Specification

	Length	35m
	Width	90m
	Area	3,150sqm

## Capacity

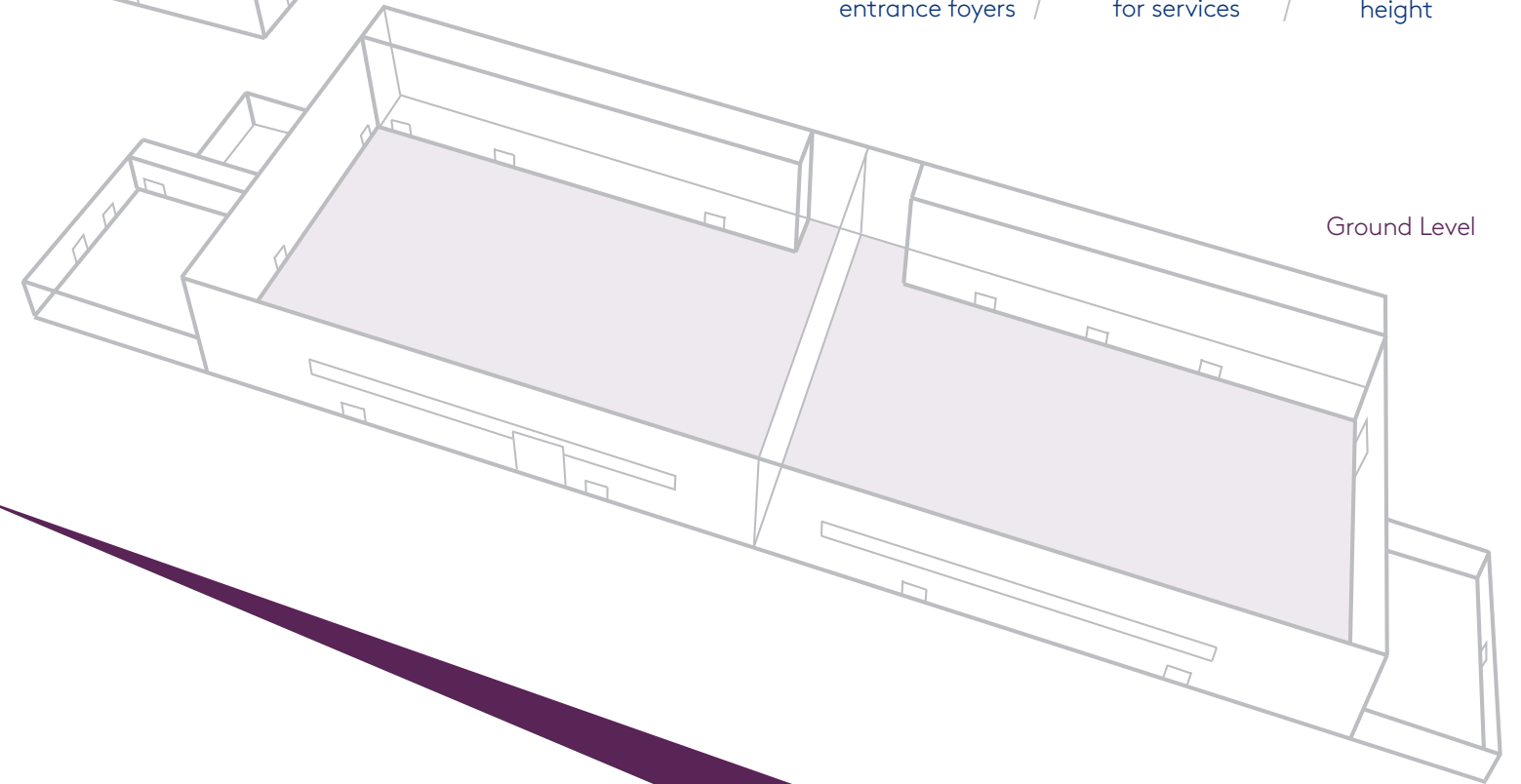
		Hall 5	East	West
	Theatre	2,500	1,200	1,200
	Cabaret	1,200	600	600
	Banqueting	1,500	750	750
	Reception	3,000	1,500	1,500

Mezzanine Level



- Drive in access for easy set up
- Electronic dividing partition
- Exclusive use
- Three phase power
- Two spacious entrance foyers
- Under floor ducts for services
- 7.4m ceiling height

Ground Level





# TESTIMONIALS

“Screwfix Live has been a great success, breaking records in terms of both visitor numbers and exhibitors. The Farnborough International Exhibition and Conference Centre works really well for us in attracting our southern region target market and for its flexibility. Furthermore, the professionalism of the team at Farnborough International makes hosting the show at the venue effortless.”

Screwfix

“Our event was a tremendous success and the support we received on the day from the venue team was fantastic. DPRTE is a big event for us, and there are always additional pressures on the day. Knowing we had an experienced team on site who we could trust to ensure all aspects of the venue were entirely taken care of made our lives a great deal easier. Being a secure site was essential for us which, along with ample free car parking, made the Farnborough International Exhibition & Conference Centre the perfect location for our event.”

BiP Solutions Ltd

“FIAT needed a space that would allow us to create an immersive brand environment that we could design without compromise. Farnborough International Exhibition & Conference Centre suited our needs perfectly and together with their responsive and flexible team we produced a highly successful event.”

Lodestar Events

“Farnborough International Exhibition & Conference Centre is such an exceptional and versatile venue. As specialists in live communications events, the blank canvas allows us to create just about anything for our clients – it’s brilliant.”

Storytellers





For more information about our unique exhibition and conference capabilities, please contact a member of our Farnborough team.

 [event-enquiries@farnborough.com](mailto:event-enquiries@farnborough.com)

 +44 (0) 1252 532 800

 [/company/farnborough-international-ltd](https://www.linkedin.com/company/farnborough-international-ltd)

 [@farnboroughinternational](https://www.facebook.com/farnboroughinternational)

 [@Farnborough\\_Int](https://twitter.com/Farnborough_Int)

[www.farnborough.com](http://www.farnborough.com)





[www.farnborough.com](http://www.farnborough.com)