

# UNFORGETTABLE

EVENTS



THE CONNAUGHT





## UNFORGETTABLE EVENTS

At the heart of one of London's most revered hotels, The Connaught hosts events which are decidedly different to that elsewhere in London.

Beautiful, individual rooms and exquisite food and drink are just the start. From spectacular dinners for 12 to a romantic wedding reception for 200, we know that a truly memorable event is about the small, personal touches. We draw on our years of experience in providing intuitive service and paying close attention to the little details, to take what you imagine and make it a reality.

  
THE CONNAUGHT





ON A QUIET CORNER OF  
**MAYFAIR**

From our peaceful corner in red-brick, Mayfair Village, we have nurtured relationships with neighbouring luxury boutiques and artisans. Fine stationers, dressmakers, florists, tailors and jewellers are all just a few steps away and can be called on to help craft a truly inimitable event. For those getting married, Farm Street Church is just around the corner.



# LIFE & SOUL

## PARTIES

Day and night, our events spaces welcome people celebrating. It could be a birthday lunch or anniversary dinner with a bespoke menu from two-Michelin-starred Hélène Darroze or the South-Eastern Asian flavours of Jean-Georges. A champagne afternoon tea with specially crafted cakes to mark a christening. Or an evening drinks reception complete with our martini trolley to celebrate a new engagement.

Allow The Connaught to set the scene for a truly memorable celebration.





# A MARRIAGE

## MADE IN MAYFAIR



## WEDDINGS

On your special day, every detail has to be perfect. From the place settings to the service, the bridal bouquet to the wedding breakfast, we take care of all the little details so you can relax and relish the moment.

It all begins with a conversation. Our dedicated wedding planner will get to know you, your tastes and vision. Lavish or intimate? Light and bright or candlelit? We will discuss all your wishes – however small or outlandish – then seek out ways to exceed them.

Your wedding journey with us includes menu tastings, a two month membership at Aman Spa, couples' spa treatments before and after the wedding, and a complimentary stay in a suite.

On the day itself, our team is wholly dedicated to you, your friends and family. Whether you are getting married at Farm Street church and joining us for a reception, or holding your ceremony in one of our rooms, you can soak up the memories, knowing you are in the safest possible hands.





# TASTEFUL CELEBRATIONS

Whatever the occasion, we bring something sensational to the table.

Discover eclectic cuisine from Jean-George at The Connaught, with its innovative, South-East Asian-influenced flavours. Dine on French culinary excellence with a custom menu from two-Michelin-starred H  l  ne Darroze, where every dish is an exquisite creation. Or draw up a bespoke feast based on a cuisine that you love. Whatever you have in mind, our chefs will make it an experience to savour.

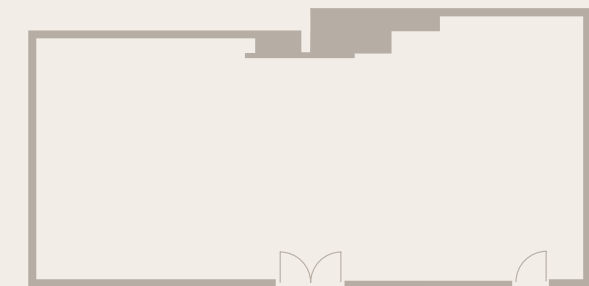




# MAYFAIR

## ROOM

Discreetly positioned down a private staircase, arriving at the Mayfair Room conjures up a sense of anticipation – and that's before you even step inside. Behind the gleaming silver and bronze double doors is our largest events space, which has played host to wedding receptions, gala dinners and even private catwalk shows. Designed by Guy Oliver, the floor-to-ceiling antique mirrors reflect and cast an enchanting glow across the room.



DIMENSIONS: 151m<sup>2</sup>/1625ft<sup>2</sup>  
CAPACITY: up to 200 guests



# MAPLE

## ROOM

Wonderfully versatile, the Maple Room makes a beautiful blank canvas for your ideas. By day, floor-to-ceiling windows allow the light to flood in. By night, flickering candles and the rich maple panelling creates a soft glow, conjuring an atmosphere of warmth and intimacy. Whether it's a ceremony or a reception, this room never fails to create a sense of occasion.



DIMENSIONS: 99m<sup>2</sup>/1066ft<sup>2</sup>  
CAPACITY: up to 100 guests







# REGENCY

## ROOM

Classically romantic, the Regency Room is where heritage and elegance perfectly combine. A crystal chandelier hangs from the ceiling; ornate antique mirrors embellish the walls; intricate silver gilding trickles from the ceiling and a hand carved white marble fire place adorns specially curated art. Every element emanates an air of sophistication ready to host your event.



DIMENSIONS: 40m<sup>2</sup>/431ft<sup>2</sup>  
CAPACITY: up to 40 guests





“OUR WEDDING DAY WAS EVERYTHING WE COULD HAVE DREAMED OF AND MORE – AND THE CONNAUGHT MADE THAT HAPPEN FOR US.

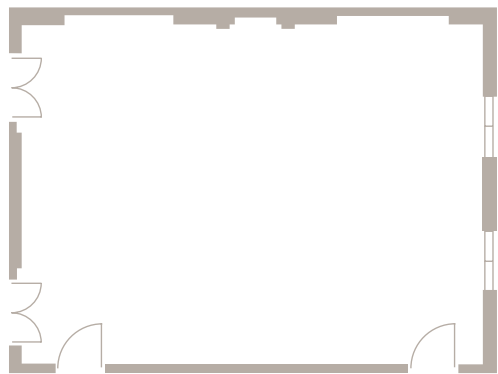
Monica & Nick



# CARLOS

## ROOM

Gentle lavender and ivory hues, teamed with palladium and gold leaf details, antique mirrors and crystal bead chandeliers from the room's 17th-century revival ceiling are only enhanced by the natural light that flows through the decorative windows. The Carlos Room is one of our most intimate rooms, the ideal setting for graceful weddings or discreet celebrations.



DIMENSIONS: 40m<sup>2</sup>/431ft<sup>2</sup>  
CAPACITY: up to 40 guests



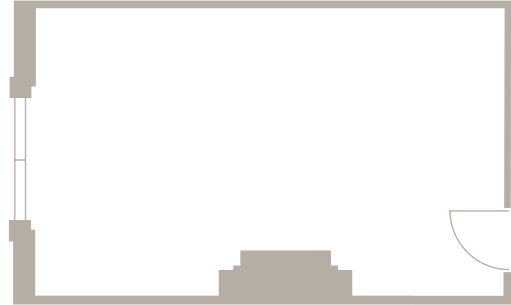




# GEORGIAN

## ROOM

There's an effortless elegance about the Georgian Room. With its ornate mantelpiece and large sash window, it beautifully blends a period style with more contemporary touches. Seating up to 10 guests, it is a popular choice for private dining in a room every bit as considered as your event.



DIMENSIONS: 24m<sup>2</sup>/258ft<sup>2</sup>  
CAPACITY: up to 10 guests

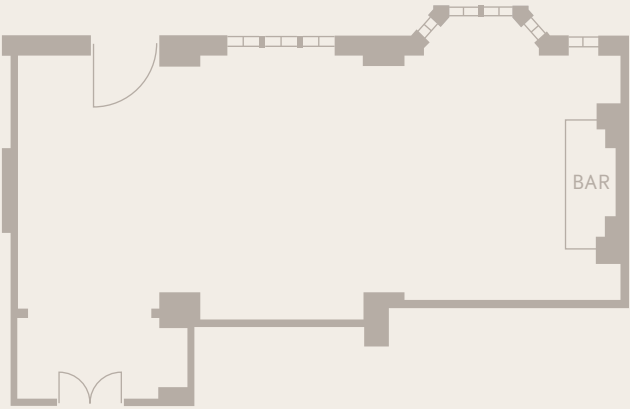




# CONNAUGHT BAR

## EXCLUSIVE USE

If walls could talk, the Connaught Bar would have many a story to tell. This world-class, multi award-winning bar attracts those in the know for evenings of elegant hedonism. With capacity for up to 80, it can be exclusively yours for a private event, complete with expert mixologists, art deco-inspired features, our iconic Martini Trolley and white-gloved service.



DIMENSIONS: 97m<sup>2</sup>/1044ft<sup>2</sup>  
CAPACITY: up to 80 guests



# CHAMPAGNE ROOM

## EXCLUSIVE USE

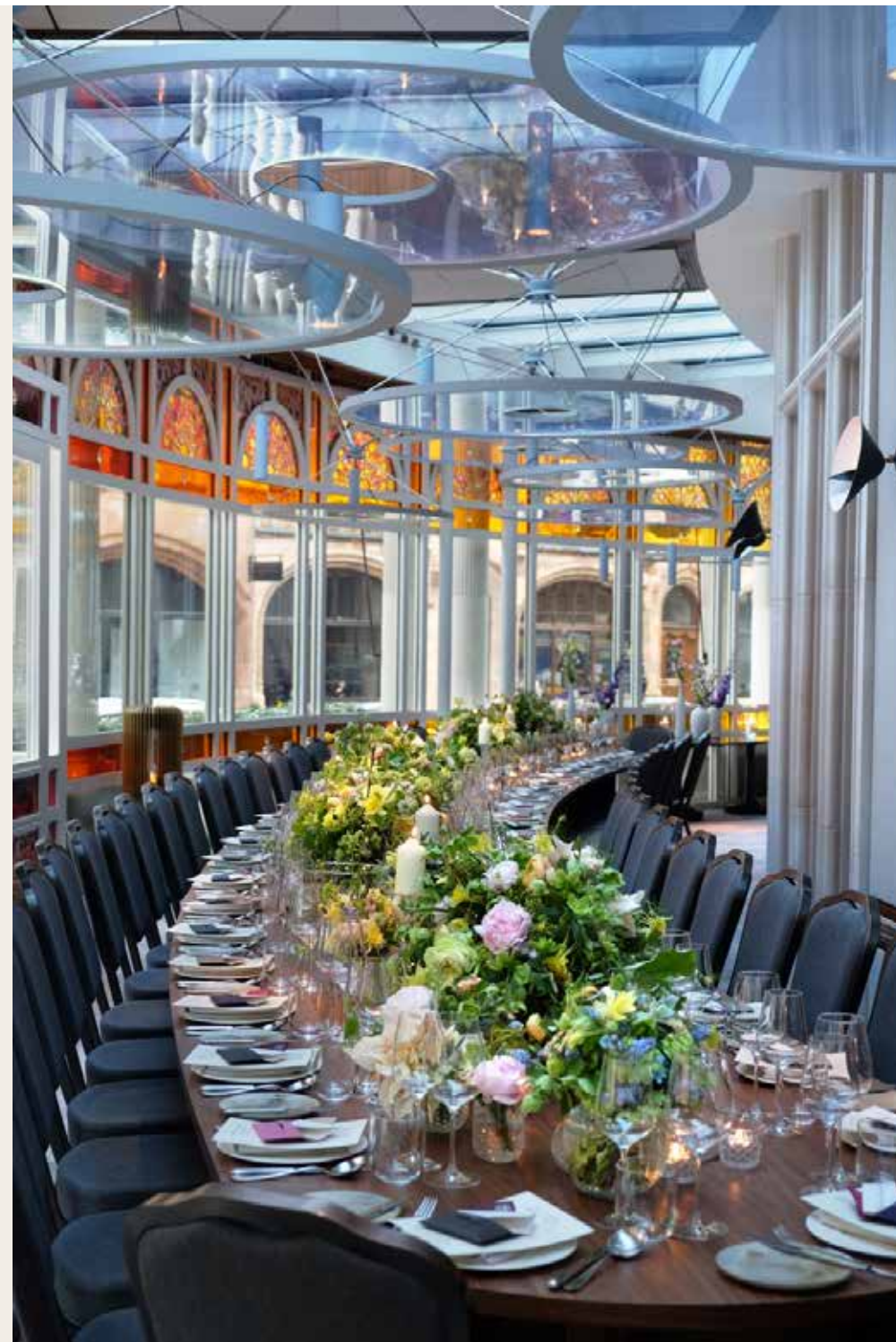
Hidden away in the heart of the hotel, the Champagne Room casts quite a spell. Above you, through a pool of light, a sculpture captures the fluid grace of a diver in motion. All around are plush leather banquettes, rich, textured furnishings and bronze-mirrored tables. Inviting and discreet, with capacity for 25 guests, this space is an alluring favourite for drinks receptions.



DIMENSIONS: 31m<sup>2</sup>/334ft<sup>2</sup>  
CAPACITY: up to 25 guests







# JEAN-GEORGES

## AT THE CONNAUGHT



### EXCLUSIVE USE

Stained glass accent windows vibrantly dazzle the room from day to night and the eclectic, imaginative menus draw from the Far East ensuring every bite is one to savour.

The room is infused with style, energy and charm making Jean-Georges at The Connaught the ideal setting for private dinners or receptions.

DIMENSIONS: 125m<sup>2</sup> /1346ft<sup>2</sup>  
CAPACITY: up to 100 guests



# HÉLÈNE DARROZE

## AT THE CONNAUGHT

### EXCLUSIVE USE

From the food to the surroundings, Hélène Darroze at The Connaught is a feast for the senses. Intimate and innovative in equal measure, the restaurant holds two Michelin stars - every dish an exquisite creation. And with the restaurant all to yourself, you and your guests will participate in a very personal culinary journey.

DIMENSIONS: 112m<sup>2</sup> / 1206ft<sup>2</sup>  
CAPACITY: up to 60 guests







# SOMMELIER'S TABLE



Beneath our legendary kitchens, The Connaught has a collection of some 6,000 vintage wines, impeccably kept in our limestone-clad cellar. Overlooking it is perhaps one of Mayfair's best-kept secrets, the Sommelier's Table. This intimate space can accommodate a maximum of eight people for a lunch or dinner of epicurean discovery from Hélène Darroze.

DIMENSIONS: 11m<sup>2</sup> / 118ft<sup>2</sup>  
CAPACITY: up to 8 guests





# CAPACITIES & DIMENSIONS

	RECEPTION	DINNER ROUNDS	DINNER OVAL	CEREMONY	AREA
MAYFAIR ROOM	200	120	60	120	151m <sup>2</sup> /1625ft <sup>2</sup>
MAPLE ROOM	100	60	36	50	99m <sup>2</sup> /1066ft <sup>2</sup>
REGENCY ROOM	40		30	20	40m <sup>2</sup> /431ft <sup>2</sup>
CARLOS ROOM	40		30	20	40m <sup>2</sup> /431ft <sup>2</sup>
GEORGIAN ROOM			10		24m <sup>2</sup> / 258ft <sup>2</sup>
CONNAUGHT BAR	80				97m <sup>2</sup> / 1044ft <sup>2</sup>
CHAMPAGNE ROOM	25				31m <sup>2</sup> / 334ft <sup>2</sup>
JEAN-GEORGES	100	90	50		125m <sup>2</sup> / 1346ft <sup>2</sup>
HELENE DARROZE	60	60			112m <sup>2</sup> / 1026ft <sup>2</sup>
SOMMELIER'S TABLE		8			11m <sup>2</sup> / 118ft <sup>2</sup>