

CREATIVITY



WELCOME



QUALITY



QEI  
CENTRE









# ABOUT THE QEII CENTRE

A TRUSTED  
EVENTS DESTINATION  
FOR MORE THAN  
30 YEARS

The QEII Centre is  
the largest dedicated  
conference, events  
and exhibition space  
in Central London.

Our venue offers world-class facilities for high-profile conferences, conventions, exhibitions, awards dinners and corporate events for up to 2,500 delegates, hosting more than 450 national and international events every year.

We have been game changers and innovators for events for more than 30 years and we are proud to have an unrivalled reputation for excellence and exceptional customer service.

With stunning views of Westminster Abbey and the Houses of Parliament to wow your delegates, unbeatable transport links, 32 versatile event spaces and award winning catering and audio-visual teams, the modern, vibrant QEII Centre can't be beaten.

*Thank you for all your hard work and attention to the event. You make everything happen for us at the QEII and we are consistently wowed by how you make everything happen so very efficiently and quickly!*

Dods Group

*I would absolutely and wholeheartedly recommend the QEII Centre for any technology conference or event. It is an utmost pleasure to work with any of your team and we are holding dates for next year's event to return to QEII.*

Neotechnology

## WHAT OUR CLIENTS SAY ABOUT US

*The conference was a great success and everything ran smoothly. It is always such a pleasure working with you and the QEII so thank you.*

Stonewall

*Normally when I organise an event I am on edge the whole day. But having met all the teams prior to the event I knew I would not have any worries with how the various departments would manage their parts of the day. The day ran smoothly, and I was able to enjoy the actual event and not worry about what was going on behind the scenes.*

Network Rail



# VERSATILE SPACES

QEI is a blank canvas – all of our rooms have the ability to be completely transformed to make every event unique.

MAKE EVERY  
EVENT UNIQUE

Our three flagship event spaces – the Churchill, the Mountbatten, and our third floor – are all flexible rooms that can host ground-breaking conferences by day and dazzling dinners by night.

## CHURCHILL

The Churchill is an impressive and highly versatile space. Situated on the ground floor, the room is suited to a variety of large events ranging from conferences, awards ceremonies, corporate dinners, parties and presentations.

The built-in stage has hosted world leaders, heads of industry and some of the greatest minds of our age. The Churchill has also been the scene of an Oscar-winning performance in 'The Theory of Everything' starring Eddie Redmayne.

## MOUNTBATTEN

The Mountbatten on the sixth floor benefits from breathtaking views of Big Ben, the London Eye and the Shard, although a flexible wall can be closed if London's iconic skyline proves to be too distracting. Equally suited to a conference, awards dinner or a party, the Mountbatten can be used on its own or in conjunction with the fifth floor below if additional space is needed for catering or exhibition.

## THIRD FLOOR

Perhaps the most versatile of all QEI's spaces, the third floor comprises the Britten, Whittle and Fleming, which can be combined to present a range of versatile options.

These adaptable spaces can accommodate large conventions, conferences, shell scheme exhibitions, gala dinners and award ceremonies, product launches and presentations, as well as as beautiful cocktail receptions and parties.

Together, these three rooms create our largest event space holding up to 1,300 theatre-style, and have been used to hold some of our most striking and creatively-themed events, each one more impressive than the last.

## VERSATILE SPACES

### CHURCHILL



### MOUNTBATTEN



### THIRD FLOOR





# CONFERENCES & MEETINGS



Conferences and meetings  
that have quite literally  
changed the world.

From world leaders to royalty, medical innovators to technology game changers, we've welcomed many famous faces over the years to appear at national and international conferences, congresses and very successful meetings.

Many of our clients have been holding events here for many years. Our client base is diverse and includes many leading UK associations, particularly from the medical sector as well as FTSE 250 organisations, local and national governments, non-profits and national and international tourism and trade development organisations.

SPACE TO MEET,  
INSPIRE AND  
CELEBRATE  
IN CENTRAL  
LONDON



CONFERENCES & MEETINGS







# DINNERS & RECEPTIONS

FRESH, SUSTAINABLE,  
SEASONAL INGREDIENTS.  
ELEGANTLY PRESENTED

Sparkling cocktail  
receptions, fine dining  
menus and indulgent  
dessert theatres.  
Dining has never been  
more tempting at the  
QEII Centre.



## DINNERS & RECEPTIONS

The QEII Centre is well known as a venue for conferences and exhibitions, however we are also able to offer a superb setting for all types of events including receptions, dinners and parties.

Guests are able to experience exceptional food and wines, delivered by the award winning QEII Taste team, whilst enjoying the backdrop of some of London's finest views.

Several of our spaces are particularly suited to awards dinners. The Churchill on the ground floor has a permanent star cloth and moving lights system installed as well as a very slightly raked floor which ensures that all tables get an excellent view of the stage. The Mountbatten on the sixth floor had a £3 million renovation in 2016 and now offers one of London's most spectacular events settings.



## Inspirational spaces in the very heart of London

Our events team loves a challenge, and in recent years they've had several opportunities to showcase what they can do and how dramatically QEII can be transformed.

We've seen the centre go from an icy Winter Wonderland to sizzling South American samba party; seamlessly transition from an indoor garden party through a larger-than-life pop-up circus to an American 1950s-style drive-thru cinema and host an immersive 80s experience, before offering a glimpse of what's to come at a futuristic dining banquet.

No matter what your vision, we can help you create innovative and exciting events that exceed expectations and impress your guests – the bigger the challenge, the better.



## INSPIRING EVENTS

EVENTS THAT  
WOW YOUR  
GUESTS





CAPACITY CHARTS

ROOM	Theatre	Cabaret	No. of Tables	Classroom	Boardroom	U-Shape	Fork Buffet	Banquet Dinner	Reception	Seated Buffet
Churchill	700	280	40	328	92			400		300
Pickwick							580	350	600	260
Olivier/Burton/Redgrave/Gielgud							400	300	400	240
Olivier	70	49	7	36		30		100	130	
Burton	40	28	4	28		20		40	70	
Burton/Redgrave combined	100	56	8	56				100	130	
Gielgud	120	70	10	56		40		100	130	
Victoria	80	35	5	40	32	30	70	50	80	
Albert	80	35	5	40	32	30	70	50	80	
Fleming	780	294	42	348	100		650	550	800	
Whittle	400	161	23	206	80		450	340	550	
Fleming/Whittle	1300	497	71	600			1100	930	1200	
Britten							750	450	900	360
Guild	56	28	4	28	30	18	60	40	90	40
Westminster	140	63	9	66	30	28	250	160	300	130
St James	175	70	10	64	30	26	180	120	250	100
Moore	110	56	8	50	40	38	85	70	100	60
Abbey	110	56	8	50	40	38	85	70	100	60
Rutherford	78	35	5	40	24	20	70	60	90	40
Moore & Ruth/Abb + Ruth							160	135	200	110
Moore, Ruth & Abbey							250	200	300	170
Wesley	40	28	4	22	24	20	30	20	40	
Wordsworth	42	28	4	22	24	22	30	20	40	
Shelley	40	21	3	20	20	20	30	20	40	
Burns	30	21	3	18	16	16	30	20	40	
Keats	30	14	2	16	16	16	30	20	30	
Chaucer	28	14	2	16	16	14	30	20	30	
Byron	25	14	2	12	12	14	30	20	20	
Darwin	35	21	3	20	20	20	30	20	40	
Hawking	25	14	2	12	16	12	20	10	20	
Cambridge							350	280	400	200
Windsor	180	77	11	80	42		250	200	300	150
Cambridge & Windsor							500	500	600	350
Mountbatten	410	161	26	200				320–384	500	
							(based on tables of 10 – 12)*			

EVENTS TEAM

Our dedicated events team are more than just your venue contacts – they become an extended part of every client’s own team, and deliver every event with as much passion and enthusiasm as the last.

We value commitment and loyalty, and we’re proud to have staff who have worked at QEII for many years. The longevity of our team benefits our clients; every member of the events team knows the centre inside out and can advise on the best ways to use it to achieve your objectives.

Continuity of personal contact is guaranteed; from as soon as your event confirms through to delivery, your event manager will be on hand to handle any problems, offer advice and expertise, liaise with our catering and AV teams and make sure everything runs smoothly on the day.

Customer service is at the core of everything we do, and we are proud to have won numerous awards.

Whether you’re organising a conference or exhibition, an awards dinner or fashion show, reception or corporate event, our experienced team can bring your ideas to life, delivering excellence, creativity and quality that shines.



VENUE OF THE YEAR  
AEO AWARDS

MOST VERSATILE VENUE  
LONDON VENUE AWARDS

LARGE VENUE OF THE YEAR  
THE DRUM EXPERIENCE AWARDS

VENUE TEAM OF THE YEAR  
THE DRUM EXPERIENCE AWARDS



# QEII LIVE

Our in-house AV team QEII Live can bring your event to life. Winners of the AV Magazine award for AV Service Team of the Year, our professional, highly qualified team will make sure your event is a technological success.

Our creative AV project managers will provide guidance and expertise every stage of the way from initial planning to event delivery, and are on hand to make your experience at the QEII Centre memorable for all the right reasons. The team's expertise spans sound, lighting, staging, data projection, video conferencing, live satellite links, streaming and simultaneous interpretation.

## Technology and facilities include:

- Flexible AV Packages
- Digital Signage and Displays
- Advanced Audio and Video Communications including IPTV
- High Definition and PIP Capabilities
- Digital Content Creation Team

## ICT and Telecoms

We have an in-house IT team and we are continually upgrading our infrastructure and equipment. We can supply you with PCs, laptops, plasma screens, telephones and printers, high speed and hard-wired internet connections and networking. You and your exhibitors can order your IT online or contact us at [avsales@qeiicentre.london](mailto:avsales@qeiicentre.london)

WE BRING  
YOUR EVENT  
TO LIFE

INNOVATIVE,  
FRESH,  
UNCOMPLICATED  
FOOD

Food can create memorable, stand-out experiences for your delegates and guests.

Award-winning in-house caterers, QEII Taste demonstrate innovation and excellence in their delivery of on-trend, fresh and uncomplicated food. They can create memorable canapes, exquisite fine dining options as well as fork buffets and bowl food menus. Our catering offer can be adapted to fit your event, whether it's a training day, awards dinner, Christmas party or international convention.

Our menus reflect our commitment to innovative, fresh, uncomplicated food, made with fantastic ingredients and beautifully presented.

All our menus now include more vegetarian and healthy choices, in response to an increased demand for lighter options. Our balanced choice menus feature information including guideline daily allowances and nutritional analysis and we operate an allergen log at all our events.

We work with our clients to create bespoke catering solutions, rather than taking a one size fits all approach. Tastings form an important part of our client experience and our head chef is always happy to advise on alternatives, suggest creative ways to accommodate special dietary requirements or create menus themed for your event, to deliver dining that's a cut above your average venue.



## LOCATION

### Westminster – home to some of the most recognisable landmarks and tourist attractions in London.

Buckingham Palace, Big Ben and the Royal Parks are just a few of the attractions within easy reach of QEII, and visitors can enjoy panoramic views of the city from our recently refurbished sixth floor.

QEII is less than five minutes' walk from Big Ben, The Houses of Parliament and the Thames and is directly opposite Westminster Abbey.

Our venue is perfectly placed to experience everything London has to offer, from world-class restaurants and nightlife to shopping and cultural attractions.

Westminster boasts superb transport links, within walking distance from three mainline and two underground stations, with access to the 24-hour tube system. The new Queen Elizabeth underground line opening in 2018 is likely to reduce travel times from London Heathrow by around 20 minutes.

### Five airports under an hour away:

#### ✈ LONDON HEATHROW

*Heathrow airport is only 45 minutes away from the centre.*

#### ✈ LONDON GATWICK

#### ✈ LONDON CITY

#### ✈ LONDON STANSTED

#### ✈ LONDON LUTON

THE EUROSTAR  
PROVIDES  
INSTANT ACCESS  
TO EUROPE

## HOTELS

### QEII benefits from 4,000 hotel rooms, ranging from budget to executive luxury accommodation, all just a short stroll from the centre.

All of the hotels are easily accessible by public transport and, by virtue of their proximity to the QEII Centre, are also close to some of London's most impressive attractions, including Buckingham Palace, Trafalgar Square and the South Bank.

4,000 HOTEL  
ROOMS WITHIN  
10 MINS WALK







# Churchill

## CAPACITIES

Theatre	700
Classroom	328
Boardroom	92
Banquet	400
Fork Buffet	–
Cabaret*	280

Fixed seats in Press Gallery – 65.

\*Cabaret capacities are based on seven people to a table. Please note that these figures are subject to change according to safety requirements, legislation and AV usage.

## DIMENSIONS

Height (max)	5.5 m
Height (min)	5.5 m
Length	28m
Width (max)	28.9 m
Area	720 m <sup>2</sup>

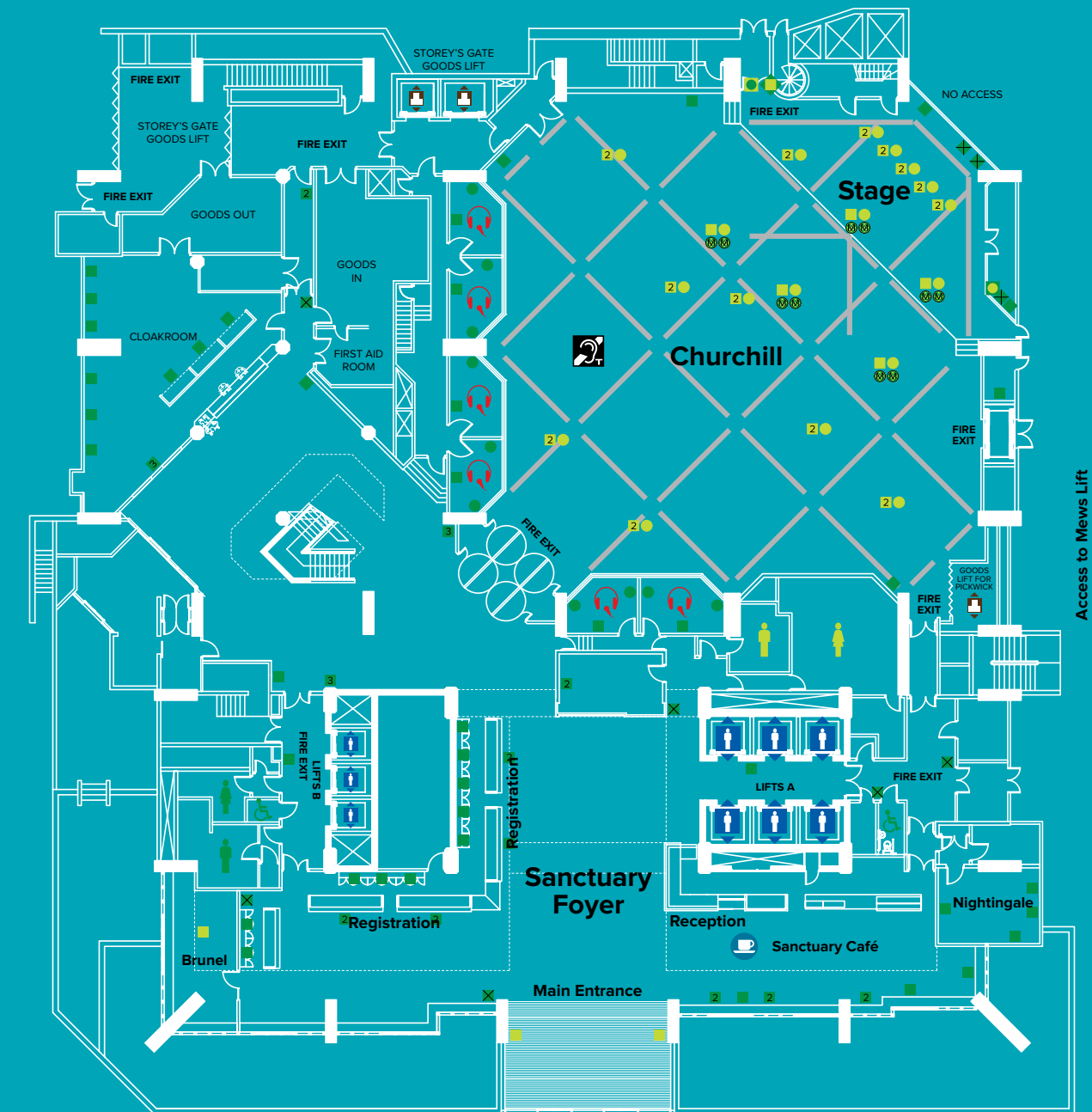
Churchill floor is raked at a rate of 1.4°.

Fixed stage height 730 mm (at centres) 650 mm (at sides).

### Key

13A double floor sockets	2x 13A double wall sockets	Single floor data port	Toilets	Pillar
2x 13A double floor sockets	3x 13A double wall sockets	Single wall data port	Passenger lift	
13A single wall socket	Power 3 phase 63A	Microphone socket	Café	
13A double wall socket	Power 3 phase 125A	SI booth	Goods lift	

## GROUND FLOOR







# FIRST FLOOR

## Pickwick

### CAPACITIES

Theatre	600
Classroom	–
Boardroom	–
Banquet	350
Seated Buffet	260
Fork Buffet	570

65 seats in the Churchill Auditorium Gallery  
Please note that these figures are subject to change according to safety requirements, legislation and AV usage.

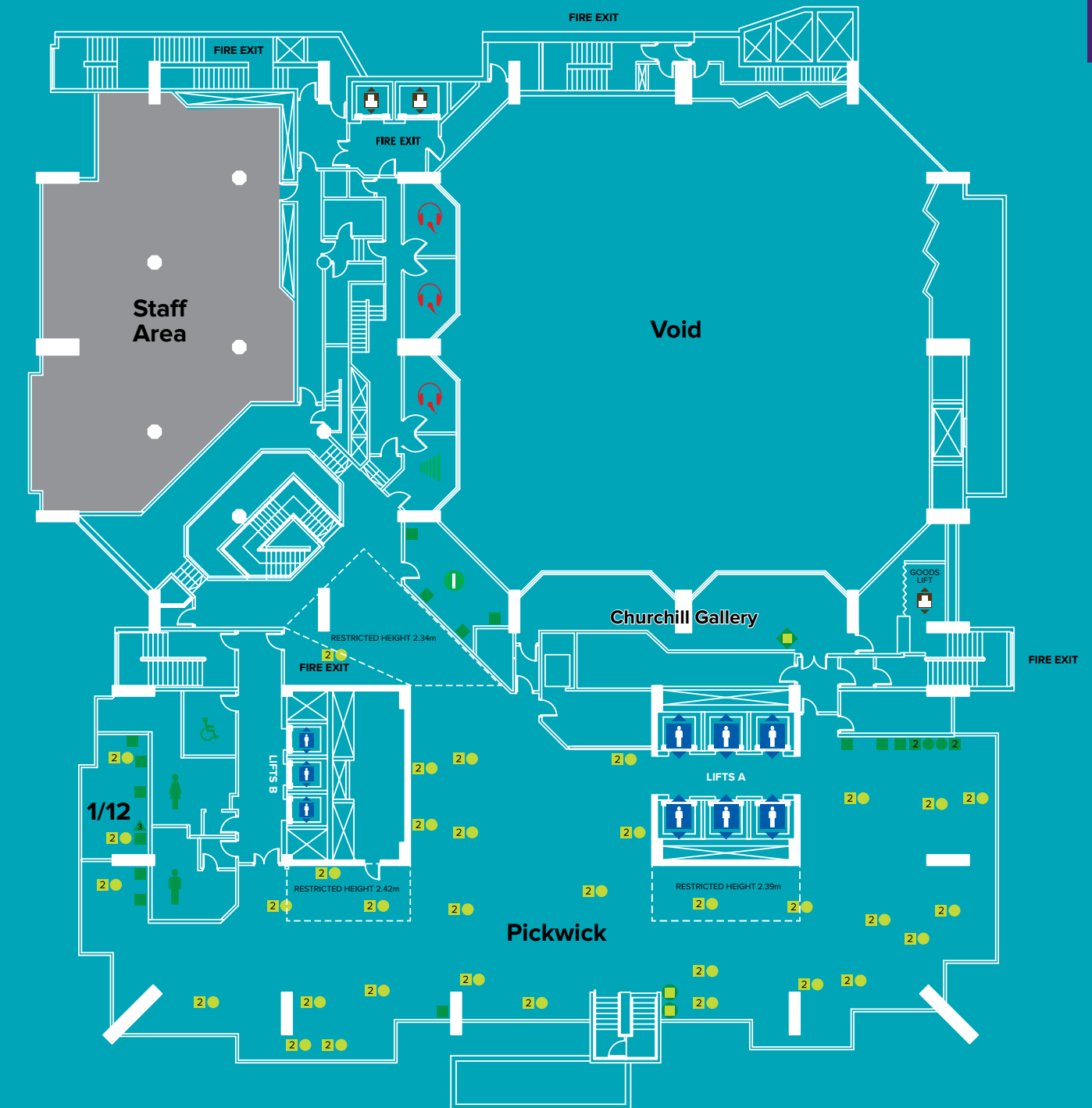
### DIMENSIONS

Height (max)	3.47 m
Height (min)	2.39 m
Length	48.94m
Width (max)	13.87 m
Area	585 m <sup>2</sup>

#### Key

2x 13A double floor sockets	Power 3 phase 125A	SI booth	Passenger lift
13A double wall socket	Single floor data port	Sound control	Goods lift
2x 13A double wall sockets	Single wall data port	AV control	Pillar
Power 3 phase 32A	Twin wall data port	Toilets	

## FIRST FLOOR







Redgrave, Gielgud, Olivier, Burton, Albert & Victoria

CAPACITIES	Olivier, Burton, Redgrave & Gielgud Combined	Redgrave + Burton Combined	Gielgud	Olivier	Burton	Albert	Victoria
Theatre	–	100	120	70	40	80	80
Classroom	–	56	56	36	28	40	40
Boardroom	–	–	–	–	–	32	32
Banquet	300	–	–	100	40	50	50
Fork Buffet	400	–	–	–	–	–	–
Seated Buffet	240	–	–	–	–	–	–
Cabaret*	–	56	70	49	28	35	35
Reception	400	–	130	130	70	80	80

\*Please note that these figures are subject to change according to safety requirements, legislation and AV usage.

DIMENSIONS

Height (max)	2.6m	2.6m	2.6m	2.6m	2.6m	3.3m	3.3m
Height (min)	2.3m	2.3m	2.3m	2.3m	2.3m	2.4m	2.4m
Length	–	–	–	–	–	8.84m	9.3m
Width	–	–	–	–	–	9.4m	8.8m
Area	679m <sup>2</sup>	179m <sup>2</sup>	250m <sup>2</sup>	250m <sup>2</sup>	116m <sup>2</sup>	90m <sup>2</sup>	83m <sup>2</sup>

Please note that these figures are subject to change, according to safety requirements, legislation and AV usage.

Key

- 13A double floor socket

2x 13A double floor sockets

13A double wall socket
- 2

2x 13A double wall sockets

Single floor data port

Single wall data port
- 2

Twin wall data port

3

Triple wall data port

M

Microphone socket
- Projector

Moveable wall

Passenger lift
- Toilets

Pillar



SECOND FLOOR





# Fleming, Whittle, Fleming, Britten & Guild

CAPACITIES	Fleming	Whittle	Combined	Britten	Guild
Theatre	780rp	400rp	1300	—	56
Classroom	348*	206*	600*	—	28
Boardroom	100	80	—	—	28
Banquet	550	340	900	450	40
Fork Buffet	650	450	1100	750	60
Cabaret†	294rp	161rp	497rp	—	28
Reception	—	—	1200	900	90

rp = Rear projection.†Cabaret capacities are based on 7 people to a table. \*Rear projection recommended in Fleming and Whittle Rooms. Please note that these figures are subject to change according to safety requirements, legislation and AV usage.

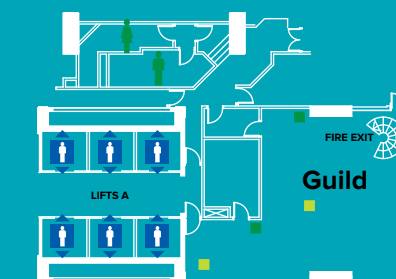
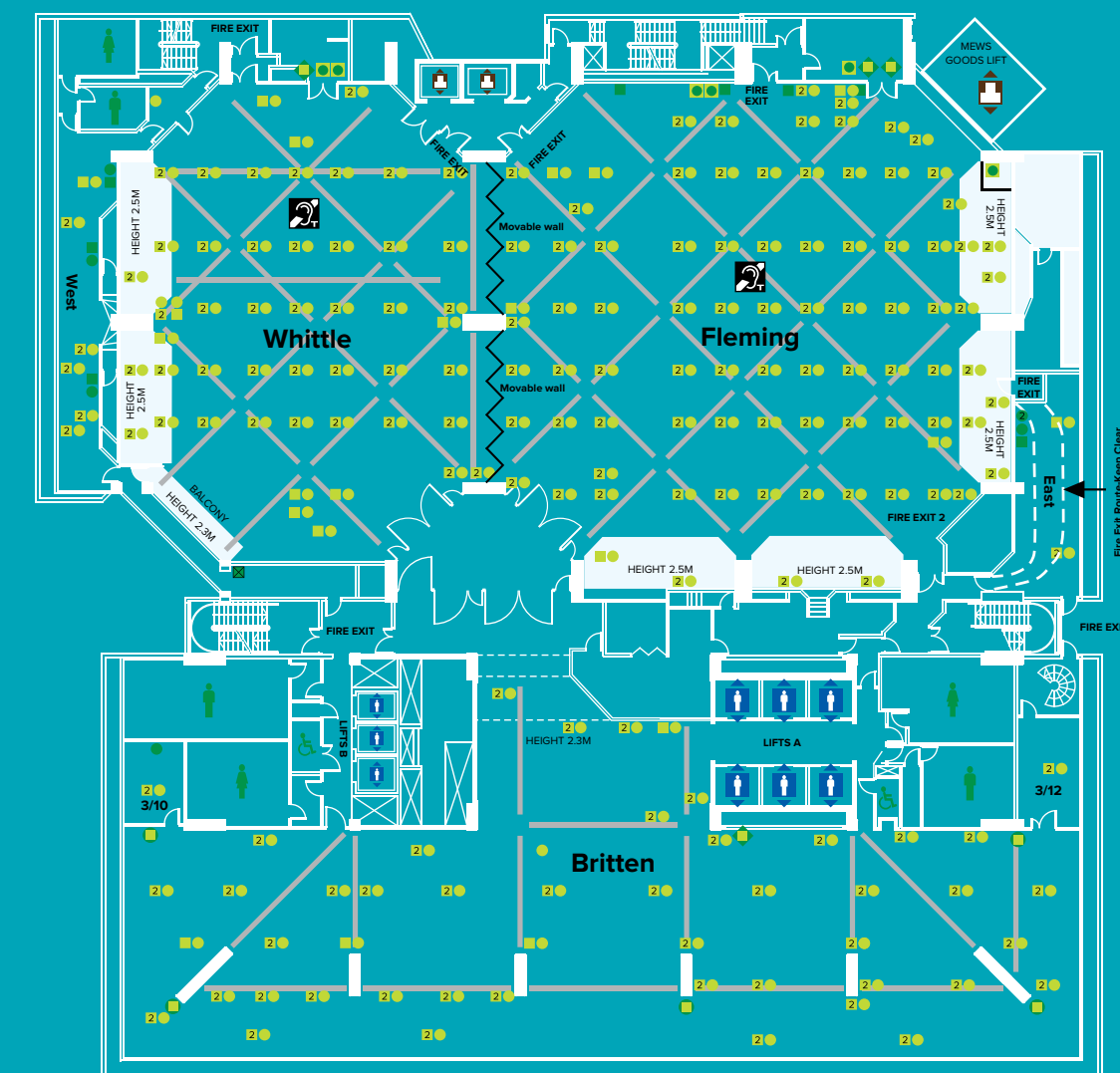
## DIMENSIONS

Height (max)	4.9m	4.9m	4.9m	6.7m	3.8m
Height (min)	2.5m	2.5m	2.5m	4.7m	3.2m
Length	29.4m	28.8m	56.9m	54.5m	13.3m
Width	29.3m	21.3m	29.3m	12.6m	9.5m
Area	860m²	515m²	1,375m²	767m²	85.4m²

Please note that these figures are subject to change, according to safety requirements, legislation and AV usage.

### Key

13A double floor socket	13A double wall socket	Power 3 phase 125A	Twin wall data port	Passenger lift	Pillar
2x 13A double floor sockets	Power 3 phase 32A	Single floor data port	Lighting bar	Toilets	
13A single wall socket	Power 3 phase 63A	Single wall data port	Moveable wall	Goods lift	



THIRD FLOOR





- Key

2

2x 13A double floor sockets

13A single wall socket

13A double wall socket

2

2x 13A double wall sockets

Power 3 phase 32A

Single floor data port

Single wall data port

2

Twin wall data port
- # St James, Westminster, Moore, Rutherford & Abbey
- | CAPACITIES  | St James | Westminster | Moore<br>+Rutherford<br>+Abbey | Rutherford<br>+Moore or<br>Abbey | Rutherford | Moore or<br>Abbey |
|-------------|----------|-------------|--------------------------------|----------------------------------|------------|-------------------|
| Theatre     | 170rp    | 140rp       | —                              | —                                | 78         | 110               |
| Classroom   | 50rp     | 66rp        | —                              | —                                | 40         | 50                |
| Boardroom   | 30       | 30          | —                              | —                                | 30         | 40                |
| Banquet     | 120      | 160         | 200                            | 135                              | 60         | 70                |
| Fork Buffet | 180      | —           | 250                            | 160                              | 70         | 85                |
| Cabaret*    | 70rp     | 63rp        | —                              | —                                | 35         | 56                |
- \*Cabaret capacities are based on 7 people to a table.  
Please note that these figures are subject to change according to safety requirements, legislation and AV usage.
- ## DIMENSIONS
- |              |                        |                   |                   |                   |                   |                   |
|--------------|------------------------|-------------------|-------------------|-------------------|-------------------|-------------------|
| Height (max) | 3.1m                   | 3.1m              | 3.0m              | 3.0m              | 3.0m              | 3.0m              |
| Height (min) | 2.2m                   | 2.2m              | 2.2m              | 2.2m              | 2.2m              | 2.2m              |
| Length       | Irregular shaped rooms |                   | 44.1m             | 27.8m             | 11.5m             | 16.3m             |
| Width        | Irregular shaped rooms |                   | 8.0m              | 8.0m              | 8.5m              | 8.0m              |
| Area         | 290m <sup>2</sup>      | 355m <sup>2</sup> | 382m <sup>2</sup> | 256m <sup>2</sup> | 126m <sup>2</sup> | 130m <sup>2</sup> |
- | SMALLER MEETING ROOMS | Wesley | Byron | Keats | Shelley | Burns | Chaucer | Wordsworth |
|-----------------------|--------|-------|-------|---------|-------|---------|------------|
| Theatre               | 40     | 25    | 30    | 40      | 30    | 28      | 42         |
| Classroom             | 24     | 12    | 16    | 20      | 16    | 16      | 24         |
| Cabaret               | 28     | 14    | 14    | 21      | 21    | 14      | 28         |
- Please note that these figures are subject to change, according to safety requirements, legislation and AV usage.
- 3

Triple wall data port

Lighting bar

Projector

1

AV control

Induction loop

Moveable wall

Passenger lift

Toilets

Goods lift

Pillar
- 
- ## FOURTH FLOOR





FIFTH FLOOR

Windsor and Cambridge

CAPACITIES	Windsor	Cambridge	Combined
Reception	300	400	600
Theatre	180	—	—
Classroom	80	—	—
Boardroom	42	—	—
Dinner	200	280	400
Fork Buffet	250	350	500
Cabaret*	77	—	—

\*Cabaret capacities are based on 7 people to a table. Please note that these figures are subject to change according to safety requirements, legislation and AV usage.

DIMENSIONS

Height (max)	3.1m	3.1m	3.1m
Height (min)	2.5m	2.5m	2.5m
Length		Irregular shaped rooms	
Width		Irregular shaped rooms	
Area	330m²	510m²	840m²

SMALLER MEETING ROOMS

	Darwin	Hawking	Turing	Berners-Lee
--	--------	---------	--------	-------------

Theatre	35	25	—	—
Boardroom	20	12	8	8
Caberet	21	14	—	—

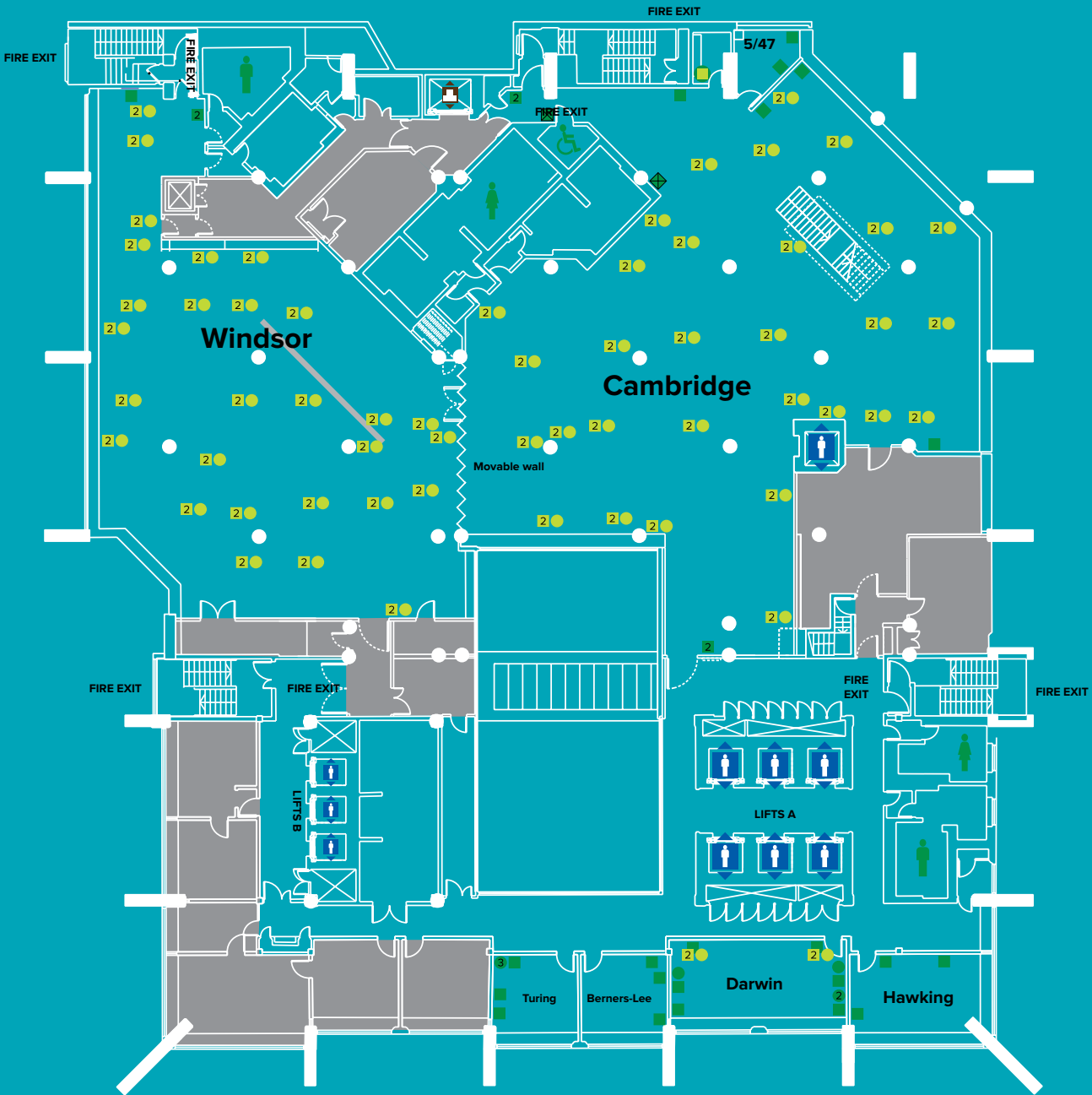
Please note that some power locations have yet to be finalised at the time of producing this floorplan. We would advise confirming exact power requirements with your event manager.

- Toilets
- Goods lift
- Pillar

Key

- 2x 13A double floor sockets
- 13A single wall socket
- 13A double wall socket
- 2x 13A double wall sockets
- Power 3 phase 32A
- Single floor data port
- Single wall data port
- Twin wall data port
- Triple wall data port
- Lighting bar
- Moveable wall
- Passenger lift

FIFTH FLOOR







# Mountbatten

## CAPACITIES

Theatre	410
Classroom	200
Dinner	384 (based on 32 tables of 12, with movable wall removed)
Reception	500
Fork Buffet	320-384
Cabaret*	161

\*Cabaret capacities are based on 7 people to a table. Please note that these figures are subject to change according to safety requirements, legislation and AV usage.

## DIMENSIONS

Height (max)	4.9 m
Height (min)	4.7 m
Length	19.5 m (with movable wall closed)
Length	32.5m (from front of the stage, with movable wall open)
Width (max)	19 m
Area	351 m <sup>2</sup> (with movable wall closed)

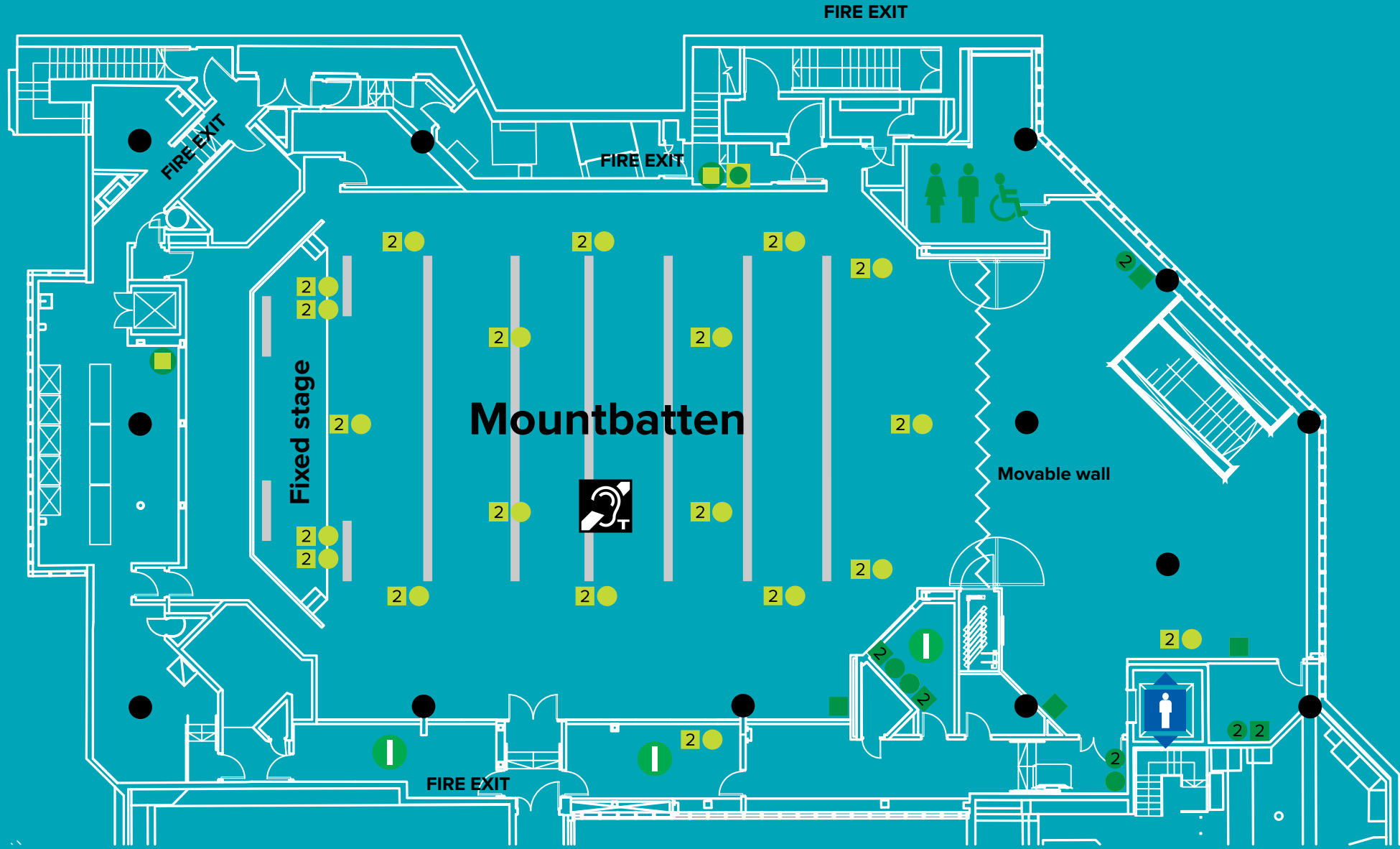
Please note that some power locations have yet to be finalised at the time of producing this floorplan. We would advise confirming exact power requirements with your event manager.

This plan is intended for guidance only and does not form any contract, representation or warranty, expressed or implied.

### Key

- |                             |                        |                     |                |
|-----------------------------|------------------------|---------------------|----------------|
| 13A double floor socket     | Power 3 phase 32A      | Twin wall data port | Moveable wall  |
| 2x 13A double floor sockets | Power 3 phase 63A      | Lighting bar        | Passenger lift |
| 13A double wall socket      | Single floor data port | AV control          | Toilets        |
| 2x 13A double wall sockets  | Single wall data port  | Induction loop      | Pillar         |

## SIXTH FLOOR







020 7798 4000

info@qeicentre.london

www.qeicentre.london