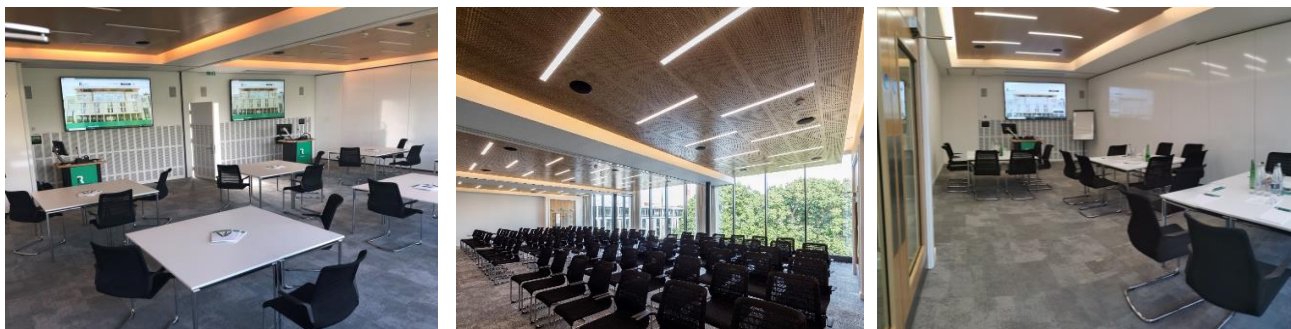










ELM GROVE CONFERENCE CENTRE – RATE CARD

Elm Grove offers a **modern, flexible contemporary** meeting space at **competitive rates**. All our meeting rooms feature **state-of-the-art audio-visual equipment** and our team are on-site whenever you need their support. We are **accredited for safe events** and have Covid-19 booking clause and contract updates. *Please ask for further information.*







OAK SUITE



This **modern interchangeable conference space** seats up to **140 theatre-style** and offers event planners the option to divide into **three separate rooms**. With **magnetic walls, full-length antiglare windows** and **98-inch plasma screens** for presentations, the rooms are the perfect environment for any conference or event. The AV within the rooms is controlled from **keypad touch systems** giving the speaker the flexibility to relay all presentations throughout the suite or on certain screens. An **inbuilt sound system** with handheld and lapel microphones is included.

	140		36		90		80		200		96
Theatre Style		Boardroom Style		Classroom Style		Cabaret Style		Drinks Style		Dinner Style	

Oak suite capacity when split into three separate event spaces (can also be set as 2 connected rooms).

	40		16		28		24		40		32
Theatre Style		Boardroom Style		Classroom Style		Cabaret Style		Drinks Style		Dinner Style	

OAK SUITE – all 3 adjoin	OAK SUITE Single room	Full DDR	Basic DDR (min 25)	½ Day DDR	24hr DDR	24hr Basic DDR
£1,200	£500	£47	£38	£25	£149	£139

All prices exclusive of VAT, minimum of 10 delegates for DDR

Full DDR inclusions

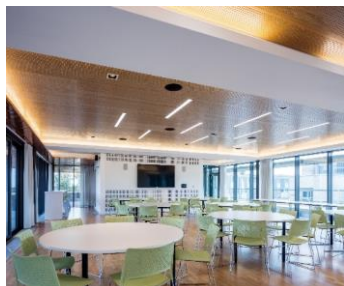
- **Room Hire** for main meeting room with **presentation equipment**
- **Mineral water** for the meeting room
- Start the day with **tea coffee, pastries and fruit pot or yoghurt**
- **Morning & afternoon** serving of **tea coffee and cookies** for the morning, with **cakes** for afternoon
- **Lunch – Finger buffet menu** served with dessert and juices

24hr Rate – includes **2 Course Buffet Dinner, Continental Breakfast and Overnight stay**

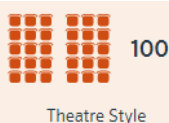


LIME TREE SUITE

This **versatile space stimulates creativity** giving clients the option to host lunches, dinners or even exhibitions. The suite leads out onto our **copper roofed terrace**, with views across to the iconic London skyline. This spectacular space will give all your guests plenty to talk about.

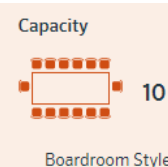


LIME TREE	½ Day DDR
£750	£25



BOARDROOMS – Tulip & Maple with Ante Room

Seating up to ten guests with **double aspect views**, built in AV equipment, this boardroom is perfect for executive meetings or team meetings and can also be used as an additional breakout space.

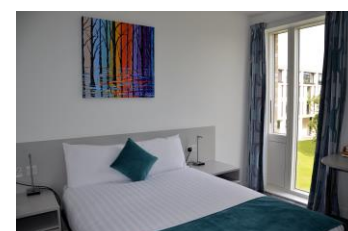


BOARDROOM	DDR
£300	£47

BEDROOMS

31 en-suite guest bedrooms situated in our Elm Grove Conference Centre. All bedrooms are en-suite with small double bed, tea coffee making facilities, hair dryer, television, iron and ironing board and complimentary wi-fi.

Staying at Elm Grove offers guests **ease of access into central London** or stay closer to SW15 and enjoy the local attractions such as Richmond Park, the Royal Botanic Gardens in Kew, Wimbledon Tennis Courts and Museum, and the London Wetland Centre in Barnes.



Room Only	B&B RATE (min. 10)	DINNER, B&B (min 10)
£70 + VAT	£82	£112
Pre-Booked Contract		
£85 inc VAT		
Booked individually		



LOCATION

- **Situated within The University of Roehampton, London. SW15 5PH.**
- **Just outside central London** – 17mins from London Waterloo.
- 10 mins walk from Barnes Station. Close to Putney & Richmond Park.

All prices are based on weekday rates, exclusive of VAT