



THE PINK ROOM

The Pink Room, with its period style and abundance of natural light, is the perfect space for a small meeting or event.

Interconnecting to the larger Argyll Room, the two venues provide the perfect combination for a reception followed by a private lunch or dinner, or a break out room during business meetings.

HIGHLIGHTS

- Can be hired privately or linked with The Argyll Room
- Selection of meeting and private dining packages
- Bespoke menus from The Game Bird
- Natural daylight

KEY FACTS

Dimensions: 6.26m x 3.81m / 20.5 x 12.4ft

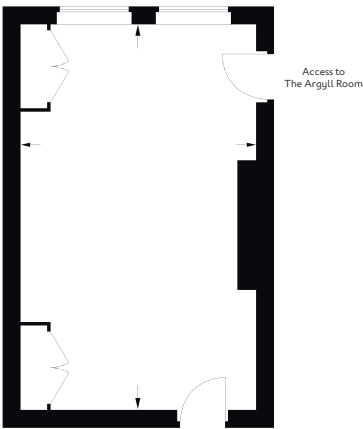
Total Area: 23m² / 247 ft²

Ceiling height: 3.2m

Adjoining Room: The Argyll Room

Location: Ground floor

LAYOUT	CAPACITY
Oval Table	10
Round Table	8
U-Shape	-
Boardroom	8
Theatre	10
Cabaret	6
Classroom	8
Standing	14





THE ARGYLL ROOM

Flooded with natural daylight the elegant Argyll Room retains original features such as panelled walls and marble fireplace and is the ideal venue for formal presentations and board meetings or a celebration with family and friends.

Conveniently located next to the smaller Pink Room, The Argyll Room can be connected as a stunning area for pre-dinner drinks or as a syndicate room for meetings.

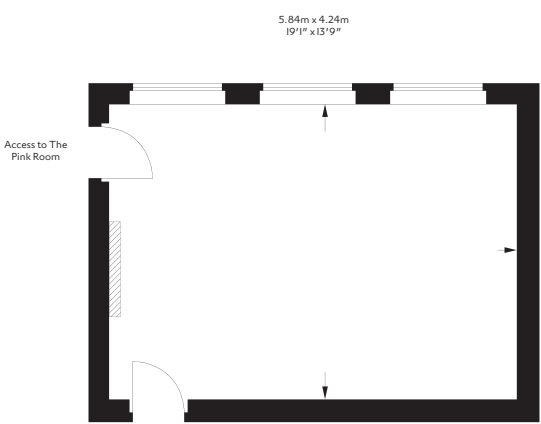
HIGHLIGHTS

- Can be hired privately or linked with The Pink Room
- Selection of meeting and private dining packages
- Bespoke menus from The Game Bird
- Natural daylight

KEY FACTS

Dimensions: 5.84m x 4.24m / 19.1 x 14ft
Total Area: 24m² / 269ft²
Ceiling height: 2.4m
Adjoining Room: The Pink Room
Location: Ground floor

LAYOUT	CAPACITY
Oval Table	14
Round Table	10
U-Shape	-
Boardroom	12
Theatre	14
Cabaret	6
Classroom	12
Standing	18





THE PANEL ROOM

The Panel Room provides a cosy setting for an intimate dinner or small meeting with the warm, mahogany panelled walls and original fireplace.

Conveniently located next to the larger Sutherland Room, The Panel Room can be connected as a stunning area for pre-dinner drinks or as a syndicate room for meetings.

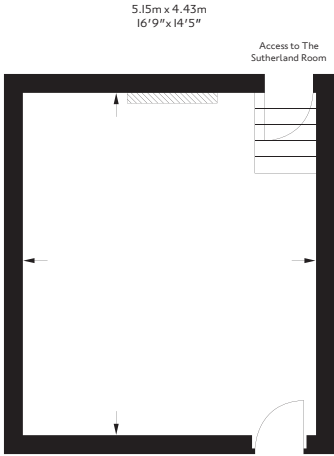
HIGHLIGHTS

- Can be hired privately or linked with The Sutherland Room
- Selection of meeting and private dining packages
- Bespoke menus from The Game Bird

KEY FACTS

Dimensions: 5.15m x 4.43m / 16.9 x 14.5ft
Total Area: 24m² / 258 ft²
Ceiling height: 2.68m
Adjoining Room: The Sutherland Room
Location: Ground floor

LAYOUT	CAPACITY
Oval Table	-
Round Table	8
U-Shape	-
Boardroom	8
Theatre	8
Cabaret	6
Classroom	-
Standing	14





THE SUTHERLAND ROOM

The versatile Sutherland Room always looks impressive, whether prepared for a high-level board meeting, set for a lavish breakfast or for an exclusive private dinner.

The Sutherland Room, conveniently located to the rear of The Game Bird, can be used semi-privately for a casual lunch or dinner or privately for a more formal evening or meeting. The Sutherland Room is combined with The Panel Room, which can be used for pre-dinner drinks or as a break-out room for meetings.

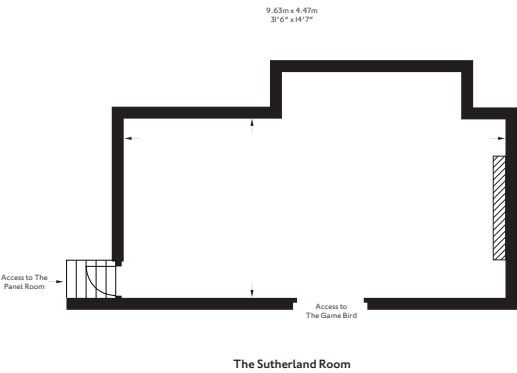
HIGHLIGHTS

- Can be hired semi-privately or privately
- Linked with The Panel Room
- Selection of meeting and private dining packages
- Bespoke menus from The Game Bird

KEY FACTS

Dimensions: 9.63m x 4.47m / 31.6 x 14.7ft
Total Area: 48 m² / 517 ft²
Ceiling height: 2.54m
Adjoining Room: The Panel Room / The Game Bird
Location: Ground floor

LAYOUT	CAPACITY
Oval Table	26
Round Table	24 (3X8)
U-Shape	22
Boardroom	26
Theatre	40
Cabaret	18 (3X6)
Classroom	24
Standing	40
E-Shape	29



THE SUTHERLAND ROOM ALTERNATIVE LAYOUT OPTIONS



Theatre layout - up to 40 guests



Reception - up to 60 guests with
The Panel room



Oval layout - up to 26 guests or
24 guests with plasma screen

thestaffordlondon.com

16-18 St James's Place London SW1A 1NJ United Kingdom

T +44 (0)20 7518 1104 E meetingsandevents@thestaffordlondon.com

 THE
STAFFORD
LONDON
EST 1912



THE WINE CELLARS

The Stafford London’s vaulted wine cellars are a perfect backdrop for a unique event.

Exclusive wine tasting events offer an enlightening experience for wine lovers, and are available for up to groups of 40. Our knowledgeable Sommeliers are on hand to take you on a journey through the magnificent 400-year-old Wine Cellars, and create the ultimate evening of wine tasting, or enjoy a wine pairing dinner to make your event truly memorable.

For a truly special occasion, the Wine Cellars can be hired for private dining groups of up to 44, with the atmospheric candlelit surroundings proving particularly popular for intimate wedding parties or family celebrations.

HIGHLIGHTS

- A hidden W/WII museum with original
- memorabilia
- Selection of meeting, private dining and wine tasting packages with our Sommelier

KEY FACTS

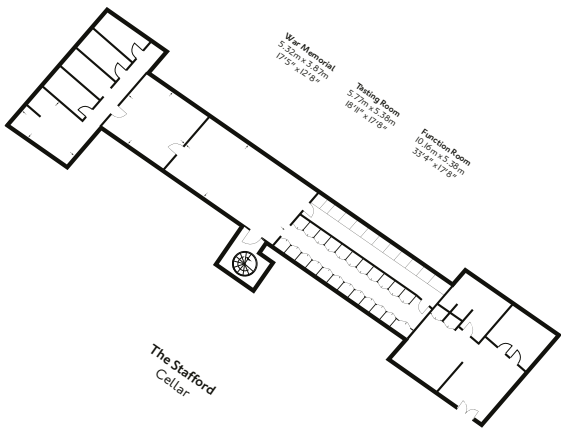
Dimensions: 10m x 5.3m / 32.9 x 17.3ft

Total Area: 61 m² / 657 ft²

Ceiling height: 2.3m

Location: Basement

LAYOUT	CAPACITY
Oval Table	32
Round Table	24 (3x8)
E-Shape	44
Boardroom	32
Theatre	40
Cabaret	18 (3x6)
Classroom	24
Standing	65



THE WINE CELLARS ALTERNATIVE LAYOUT OPTIONS



Tasting chamber - ideal for wine tastings and drinks



Standing reception - up to 65 guests



E-shape layout - up to 44 guests

thestaffordlondon.com

16-18 St James's Place London SW1A 1NJ United Kingdom

T +44 (0)20 7518 1104 E meetingsandevents@thestaffordlondon.com

 THE
STAFFORD
LONDON
EST 1912