



THE
STAFFORD
LONDON
EST 1912

Meetings & Events

Menus & E-Brochure

thestaffordlondon.com

[@StaffordLondon](https://twitter.com/StaffordLondon) [f TheStaffordLondon](https://www.facebook.com/TheStaffordLondon) [i thestaffordlondon](https://www.instagram.com/thestaffordlondon)

16-18 St James's Place London SW1A 1NJ United Kingdom
T +44 (0)20 7518 1104 E meetingsandevents@thestaffordlondon.com

LEGEND

Preferred
HOTELS & RESORTS



THE
STAFFORD
LONDON
EST 1912

Meetings & Events

Our Spaces

The Stafford London is the perfect location for any event, offering some of the most luxurious meeting rooms in the capital. Each of our seven private dining locations provide a unique setting, while our discreet staff will ensure your event is seamless from start to finish.

From an important business meeting, to an informal lunch or dinner with friends or a cocktail reception in the 380-year-old working wine cellars, the team are on hand to create bespoke events that are flawless every time.





THE WINE CELLARS

The Stafford London's vaulted wine cellars are a perfect backdrop for a unique event.

Exclusive wine tasting events offer an enlightening experience for wine lovers. Our knowledgeable Sommeliers are on hand to take you on a journey through the magnificent 380-year-old Wine Cellars, and create the ultimate evening of wine tasting, or enjoy a wine pairing dinner to make your event truly memorable

For a truly special occasion, the Wine Cellars can be hired for private dining groups of up to 44, with the atmospheric candlelit surroundings proving particularly popular for intimate wedding parties or family celebrations.

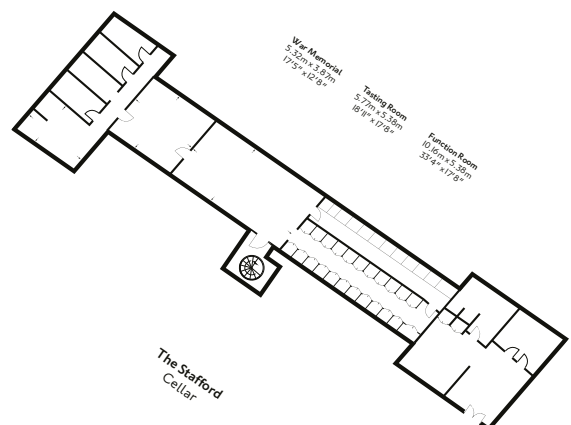
HIGHLIGHTS

- A hidden WWII museum with original memorabilia
- Selection of meeting, private dining and wine tasting packages with our Sommelier

KEY FACTS

Dimensions: 10m x 5.3m / 32.9 x 17.3ft
 Total Area: 61 m² / 657 ft²
 Ceiling height: 2.3m
 Location: Basement

LAYOUT	CAPACITY
Oval Table	32
Round Table	24 (3x8)
E-Shape	44
Boardroom	32
Theatre	40
Cabaret	18 (3x6)
Classroom	24
Standing	85



THE WINE CELLARS ALTERNATIVE LAYOUT OPTIONS



Tasting chamber - ideal for wine tastings and drinks



Standing reception - up to 85 guests



E-shape layout - up to 44 guests

thestaffordlondon.com

[@StaffordLondon](https://twitter.com/StaffordLondon) [f TheStaffordLondon](https://www.facebook.com/StaffordLondon) [the StaffordLondon](https://www.instagram.com/staffordlondon)

16-18 St James's Place London SW1A 1NJ United Kingdom

T +44 (0)20 7518 1104 E meetingsandevents@thestaffordlondon.com

LEGENDSM
Preferred
HOTELS & RESORTS



THE SUTHERLAND ROOM

The versatile Sutherland Room always looks impressive, whether prepared for a high-level board meeting, set for a lavish breakfast or for an exclusive private dinner.

The Sutherland Room, conveniently located to the rear of The Game Bird, can be used semi-privately for a casual lunch or dinner or privately for a more formal evening or meeting. The Sutherland Room is combined with The Panel Room, which can be used for pre-dinner drinks or as a break-out room for meetings.

HIGHLIGHTS

- Can be hired semi-privately or privately
- Linked with The Panel Room
- Selection of meeting and private dining packages
- Bespoke menus from The Game Bird

KEY FACTS

Dimensions: 9.63m x 4.47m / 31.6 x 14.7ft

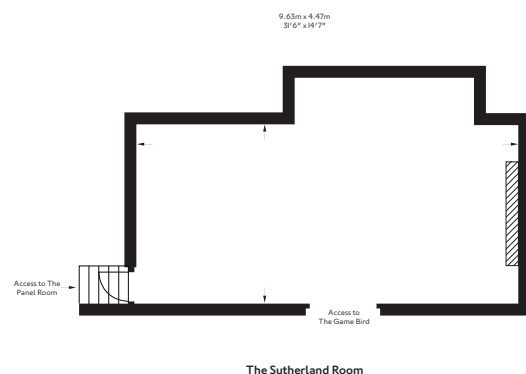
Total Area: 48 m² / 517 ft²

Ceiling height: 2.54m

Adjoining Room: The Panel Room / The Game Bird

Location: Ground floor

LAYOUT	CAPACITY
Oval Table	26
Round Table	24 (3X8)
U-Shape	22
Boardroom	26
Theatre	40
Cabaret	18 (3X6)
Classroom	24
Standing	40
E-Shape	29



THE SUTHERLAND ROOM ALTERNATIVE LAYOUT OPTIONS



Theatre layout - up to 40 guests



Reception - up to 60 guests with
The Panel room



Oval layout - up to 26 guests or
24 guests with plasma screen



THE PANEL ROOM

The Panel Room provides a cosy setting for an intimate dinner or small meeting with the warm, mahogany panelled walls and original fireplace.

Conveniently located next to the larger Sutherland Room, The Panel Room can be connected as a stunning area for pre-dinner drinks or as a syndicate room for meetings.

HIGHLIGHTS

- Can be hired privately or linked with The Sutherland Room
- Selection of meeting and private dining packages
- Bespoke menus from The Game Bird

KEY FACTS

Dimensions: 5.15m x 4.43m / 16.9 x 14.5ft

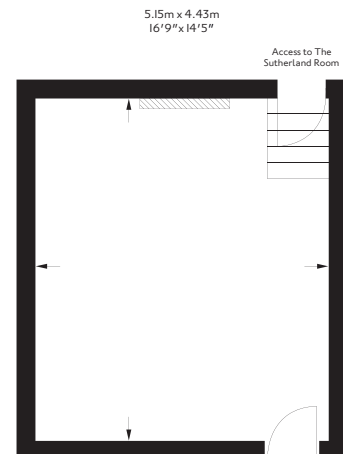
Total Area: 24m² / 258 ft²

Ceiling height: 2.68m

Adjoining Room: The Sutherland Room

Location: Ground floor

LAYOUT	CAPACITY
Oval Table	-
Round Table	8
U-Shape	-
Boardroom	8
Theatre	8
Cabaret	6
Classroom	-
Standing	14



thestaffordlondon.com

[@StaffordLondon](https://twitter.com/StaffordLondon) [f TheStaffordLondon](https://www.facebook.com/TheStaffordLondon) [i thestaffordlondon](https://www.instagram.com/thestaffordlondon)

16-18 St James's Place London SW1A 1NJ United Kingdom

T +44 (0)20 7518 1104 E meetingsandevents@thestaffordlondon.com

LEGEND

Preferred
HOTELS & RESORTS



THE PINK ROOM

The Pink Room, with its period style and abundance of natural light, is the perfect space for a small meeting or event.

Interconnecting to the larger Argyll Room, the two venues provide the perfect combination for a reception followed by a private lunch or dinner, or a break out room during business meetings.

HIGHLIGHTS

- Can be hired privately or linked with The Argyll Room
- Selection of meeting and private dining packages
- Bespoke menus from The Game Bird
- Natural daylight

KEY FACTS

Dimensions: 6.26m x 3.81m / 20.5 x 12.4ft

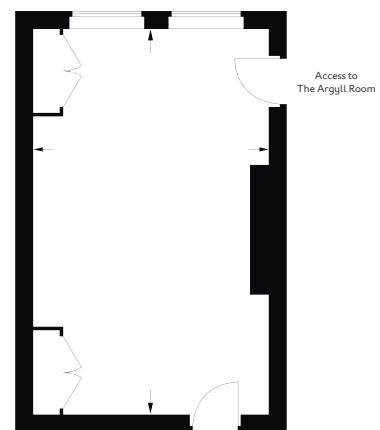
Total Area: 23m² / 247 ft²

Ceiling height: 3.2m

Adjoining Room: The Argyll Room

Location: Ground floor

LAYOUT	CAPACITY
Oval Table	10
Round Table	8
U-Shape	-
Boardroom	8
Theatre	10
Cabaret	6
Classroom	8
Standing	14



thestaffordlondon.com

[@StaffordLondon](https://twitter.com/StaffordLondon)
[f TheStaffordLondon](https://www.facebook.com/TheStaffordLondon)
[i thestaffordlondon](https://www.instagram.com/thestaffordlondon)

16-18 St James's Place London SW1A 1NJ United Kingdom

T +44 (0)20 7518 1104 E meetingsandevents@thestaffordlondon.com

LEGEND

Preferred
HOTELS & RESORTS



THE ARGYLL ROOM

Flooded with natural daylight the elegant Argyll Room retains original features such as panelled walls and marble fireplace and is the ideal venue for formal presentations and board meetings or a celebration with family and friends.

Conveniently located next to the smaller Pink Room, The Argyll Room can be connected as a stunning area for pre-dinner drinks or as a syndicate room for meetings.

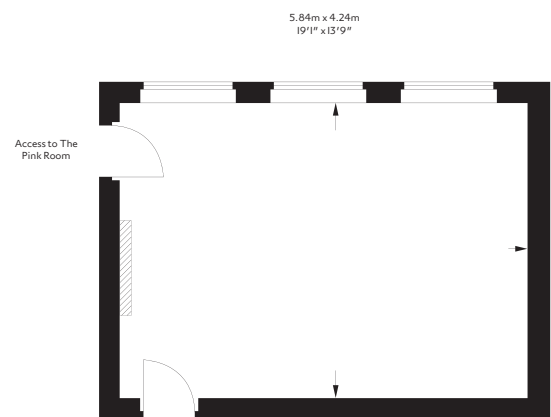
HIGHLIGHTS

- Can be hired privately or linked with The Pink Room
- Selection of meeting and private dining packages
- Bespoke menus from The Game Bird
- Natural daylight

KEY FACTS

Dimensions: 5.84m x 4.24m / 19.1 x 14ft
 Total Area: 24m² / 269ft²
 Ceiling height: 2.4m
 Adjoining Room: The Pink Room
 Location: Ground floor

LAYOUT	CAPACITY
Oval Table	14
Round Table	10
U-Shape	-
Boardroom	12
Theatre	14
Cabaret	6
Classroom	12
Standing	18



thestaffordlondon.com

[@StaffordLondon](https://twitter.com/StaffordLondon)
[f TheStaffordLondon](https://www.facebook.com/TheStaffordLondon)
[i thestaffordlondon](https://www.instagram.com/thestaffordlondon)

16-18 St James's Place London SW1A 1NJ United Kingdom

T +44 (0)20 7518 1104 E meetingsandevents@thestaffordlondon.com

LEGEND
Preferred
 HOTELS & RESORTS



THE GAME BIRD

The Game Bird is a contemporary tale about relaxed, informal dining any time of the day. A place to eat, drink and socialise. The focus is on modern British comfort cooking executed with style and panache, all wrapped in a seductive ambience that oozes cool sophistication.

We are offering exclusive use of The Game Bird Restaurant for a private lunch, dinner or evening drinks reception.

HIGHLIGHTS

- Bespoke menus from The Game Bird
- Adjoining room: The Sutherland Room
- Natural daylight

LAYOUT	CAPACITY
Oval Table	-
Round Table	-
U-Shape	-
Boardroom	-
Theatre	-
Cabaret	-
Existing	55
Standing	80



thestaffordlondon.com

[@StaffordLondon](https://twitter.com/StaffordLondon)
[f TheStaffordLondon](https://www.facebook.com/TheStaffordLondon)
[i thestaffordlondon](https://www.instagram.com/thestaffordlondon)

16-18 St James's Place London SW1A 1NJ United Kingdom

T +44 (0)20 7518 1104 E meetingsandevents@thestaffordlondon.com

LEGEND
Preferred
 HOTELS & RESORTS



THE STAFFORD PARK SUITE

A large open plan sitting room and dining room features a stunning central Calcutta marble fireplace, which is flanked by double glass doors that lead out onto the spectacular private terrace, where guests can enjoy magical rooftop views.

Both the sitting room and outdoor terrace are hired as one private dining space and can be adapted for a lunch, dinner, drinks reception or business meeting.

HIGHLIGHTS

- Newly renovated, contemporary design
- Sitting room and terrace can be hired privately together with terrace, or as a suite with bedroom
- Selection of meeting and private dining packages
- Bespoke menus from The Game Bird
- Natural daylight
- Outdoor terrace with views of London
- Outdoor heaters and coverings available

KEY FACTS

Dimensions: 3.96m x 4.15m (living area) 2.97m x 0.96m (stage area) 4.32m x 4.15m (outdoor terrace)

Total Area: 66.7m² / 718ft²

Ceiling height: 2.68m

Location: Main House Hotel, 5th Floor

LAYOUT	CAPACITY
Oval Table	10
Round Table	-
U-Shape	-
Boardroom	-
Theatre	-
Cabaret	-
Classroom	-
Standing	30

thestaffordlondon.com

[@StaffordLondon](https://twitter.com/StaffordLondon) [f TheStaffordLondon](https://www.facebook.com/TheStaffordLondon) [i thestaffordlondon](https://www.instagram.com/thestaffordlondon)

16-18 St James's Place London SW1A 1NJ United Kingdom

T +44 (0)20 7518 1104 E meetingsandevents@thestaffordlondon.com

LEGEND
Preferred
HOTELS & RESORTS



THE COURTYARD

The Courtyard is the perfect place for al fresco events and celebrations. The Stafford London offer semi-private events in this stunning location. Whether it be a lavish drinks reception, or a dinner with friends, our unique courtyard is the ideal location to enjoy exquisite food and drinks in the London sunshine.

When booking The Courtyard you will also have access to The Wine Cellars, which can be accessed via the stairs located in The Courtyard.

HIGHLIGHTS

- Can be hired semi-privately
- Selection of meeting and private dining packages
- Bespoke menus from The Game Bird
- Heaters and awning available
- Private bar available

KEY FACTS

Dimensions: 20m x 13.25m / 65.61ft x 43.47ft

Location: The American Bar at The Stafford London, Blue Ball Yard

LAYOUT	CAPACITY
Oval Table	-
Rounds	30
U-Shape	-
Boardroom	-
Theatre	-
Cabaret	-
Classroom	-
Standing	50

thestaffordlondon.com

[@StaffordLondon](https://twitter.com/StaffordLondon) [f TheStaffordLondon](https://www.facebook.com/TheStaffordLondon) [i thestaffordlondon](https://www.instagram.com/thestaffordlondon)

16-18 St James's Place London SW1A 1NJ United Kingdom

T +44 (0)20 7518 1104 E meetingsandevents@thestaffordlondon.com

LEGEND
Preferred
HOTELS & RESORTS



THE
STAFFORD
LONDON
EST 1912

Meetings & Events

Menus

We offer a selection of menus to suit any event. From a business lunch, to an indulgent private dining celebration, our menus showcase the best The Stafford London has to offer.

Choose from our lunch selection, canape menu, or our specially-curated private dining menus, including The Discovery menu, Taste of The Game Bird, and finally our Gourmet menu.

THE GAME BIRD

CANAPÉS

Selection of 4 - £16.00pp

Selection of 6 - £20.00pp

Fish

DEVON CRAB TART
Oscietra Caviar

SMOKED SALMON TARTARE
Pumpernickel, Horseradish Crème Fraîche

CRISPY TIGER PRAWNS
Singapore Chilli Sauce

Meat

AGED BEEF TARTARE
Charcoal Mayonnaise, Worcestershire Sauce

BUTTERMILK FRIED CHICKEN
Mustard Crème Fraîche

GAME SAUSAGE ROLL
Smoked Mayonnaise

Vegetarian

WILD MUSHROOM ARANCINI
Truffle Mayonnaise

SPRING PEA CROQUETTES
Truffle Aioli

SALT-BAKED BEETROOT
Toasted Pine Nuts, Whipped Ricotta

RED ONION & GOAT'S CHEESE TART

Puddings

DARK CHOCOLATE CHOUX BUN
Crème Diplomat

LEMON MERINGUE PIE

APPLE AND BLACKBERRY CRUMBLE

We are happy to provide information on food allergies and intolerances on request. As food allergens are present in the kitchen, there is a risk that traces of these may be found in our dishes. (v) vegetarian option (v*) vegan option. All prices are inclusive of VAT.
A discretionary service charge of 12.5% will be added to your bill.

THE GAME BIRD

Lunch Selection

Please choose any 5 items for £45

Please choose any 8 items for £55

Sandwiches

THE AMERICAN BAR CLUB SANDWICH
Grilled Chicken, Pancetta, Free-Range Egg,
Vine Tomato, Baby Gem Lettuce

CHICKEN CAESAR WRAP

CROQUE MONSIEUR

PRAWN COCKTAIL WRAP

SMOKED SALMON BAGEL
Cream Cheese

REUBEN ON RYE
Dill Pickles, American Mustard

TOMATO, BASIL PESTO, ROCKET
Focaccia Bread

Salads

WALDORF SALAD
Endive, Celery, Walnuts,
Apple, Mustard Mayonnaise

PANZANELLA SALAD

BUTTERMILK CHICKEN SALAD

MIXED GREEN SALAD

SUPERFOOD SALAD
Quinoa, Broccoli, Sweet Potato, Feta,
Pomegranate, Pesto

SALT BAKED BEETROOT SALAD
Pine Nuts, Goat's Curd

Puddings

VANILLA CRÈME BRÛLÉE

LEMON MERINGUE PIE

FRUIT PLATTER

CHOCOLATE & CARAMEL TART

We are happy to provide information on food allergies and intolerances on request. As food allergens are present in the kitchen, there is a risk that traces of these may be found in our dishes. (v) vegetarian option (v*) vegan option. All prices are inclusive of VAT. A discretionary service charge of 12.5% will be added to your bill.

THE
GAME BIRD

Summer Menu 1 ~ The Discovery

£70 per person

Starters

VINE TOMATO CONSOMMÉ (v) or (v*)
Homemade Bread, Dried Tomatoes, Sweet Onions, Basil

H. FORMAN & SON SMOKED SALMON
Pickled Cucumber, Horseradish Crème Fraîche

HAND-CUT AGED WEST COUNTRY BEEF TARTARE
Charcoal Mayonnaise, Crispy Sourdough

CHICKEN LIVER PARFAIT
Gooseberry Compôte, Toasted Brioche

Mains

SALT-AGED RUMP OF LAMB
Violet Artichoke, Broad Beans, Marjoram

FREE-RANGE CORN-FED CHICKEN
Petit Pois, Port of Lancaster Bacon, Gem Lettuce

AUBERGINE PARMIGIANA (v) or (v*)

GRILLED HALIBUT
Potted Southport Shrimps, Sea Herbs

Puddings

CONFIT WILD STRAWBERRY CRÈME DIPLOMAT (v)
Rose Water Meringue

PEACH MELBA (v)

BUTTERMILK PANNA COTTA (v)
Summer Fruit Compôte, Honeycomb

HAZELNUT AND CHOCOLATE CYLINDER (v)
Salt Milk Ice Cream

SELECTION OF THREE BRITISH CHEESES

Quince Jelly, Homemade Chutney, Cheese Crackers
PLATE £12.00/BOARD £45.00

We are happy to provide information on food allergies and intolerances on request. As food allergens are present in the kitchen, there is a risk that traces of these may be found in our dishes. (v) vegetarian option (v*) vegan option. All prices are inclusive of VAT. A discretionary service charge of 12.5% will be added to your bill. Menu available from 21st June.

THE
GAME BIRD

Summer Menu 2 ~
Taste of The Game Bird

£90 per person

Starters

CORNISH CRAB TART
Granny Smith Apple, Dill

SALT-BAKED KOHLRABI (v) or (v*)
Radish, Cucumber

Mains

DRY-AGED FILLET OF BEEF
Béarnaise Butter, Grilled Grelot Onions

CRISPY COURGETTE FLOWER (v) or (v*)
Dorset Ash Goat's Cheese

Pudding

ETON MESS PARFAIT (v)

SELECTION OF THREE BRITISH CHEESES
Quince Jelly, Homemade Chutney, Cheese Crackers
PLATE £12.00/BOARD £45.00

We are happy to provide information on food allergies and intolerances on request. As food allergens are present in the kitchen, there is a risk that traces of these may be found in our dishes. (v) vegetarian option (v*) vegan option.
All prices are inclusive of VAT. A discretionary service charge of 12.5% will be added to your bill. Menu available from 21st June.

THE
GAME BIRD

Summer Menu 3 ~
The Gourmet Menu
£120 per person

Starters

BUTTER-POACHED NATIVE LOBSTER
Grilled Asparagus, Champagne Sauce

GRILLED ASPARAGUS (v) or (v*)
Poached Duck Egg, Romesco, Smoked Flaked Almonds

Mains

BEEF WELLINGTON
Truffle Pomme Purée, Tenderstem Broccoli, Madeira Jus

BEETROOT WELLINGTON (v) or (v*)
Truffle Pomme Purée, Wilted Spinach, Madeira Jus

Pudding

AMEDEI CHOCOLATE MOUSSE (v)
Vanilla Sheep's Yoghurt, Hazelnut Ice Cream

SELECTION OF THREE BRITISH CHEESES
Quince Jelly, Homemade Chutney, Cheese Crackers
PLATE £12.00/BOARD £45.00

We are happy to provide information on food allergies and intolerances on request. As food allergens are present in the kitchen, there is a risk that traces of these may be found in our dishes. (v) vegetarian option (v*) vegan option.
All prices are inclusive of VAT. A discretionary service charge of 12.5% will be added to your bill. Menu available from 21st June.