

A large, multi-story red brick building with a curved facade and a central arched entrance. The building has many windows with white frames and shutters. A balcony with a stone balustrade runs along the top of the curved section. The foreground shows a green lawn and a gravel path.

*Meet*

AT OAKLEY HALL HOTEL

## 24-HOUR PACKAGE

ROOM HIRE (MAIN MEETING ROOM)

THREE REFRESHMENT BREAKS THROUGHOUT THE DAY

PREMIUM WRITING PADS AND PENS

INITIAL MINERAL WATER AND CORDIALS

HOT AND COLD FINGER BUFFET LUNCH WITH DESSERT

HIGH SPEED WIFI

SCREEN, PROJECTOR AND FLIP CHART

UNLIMITED TEA AND COFFEE THROUGHOUT THE DAY

COMPLIMENTARY DIGITAL NEWSPAPER

OVERNIGHT STAY IN A DELUXE BEDROOM

THREE-COURSE DINNER (UP TO THE VALUE OF £45 PER PERSON)

FULL ENGLISH BREAKFAST

**FROM £250 per person**

## DAY DELEGATE PACKAGE

ROOM HIRE (MAIN MEETING ROOM)

THREE REFRESHMENT BREAKS THROUGHOUT THE DAY

PREMIUM WRITING PADS AND PENS

INITIAL MINERAL WATER AND CORDIALS

HOT AND COLD FINGER BUFFET LUNCH WITH DESSERT

HIGH SPEED WIFI

SCREEN, PROJECTOR AND FLIP CHART

UNLIMITED TEA AND COFFEE THROUGHOUT THE DAY

**FROM £85 per person**





# GARDEN PAVILION



With room for up to 400 delegates, the Garden Pavilion is ideal for large capacity conferences. It has its own high-tech lighting and PA system. We can also offer a large screen and rear projector in the Garden Pavilion for an additional £250.

**Theatre: 400 delegates**

**Dining: 350 delegates**

**Classroom: 200 delegates**

**Boardroom: 108 delegates**

**Cabaret: 230 delegates**

*Dimensions: 30.00m x 15.00m x 3.00m (l x w x h)*

GROUND FLOOR







GROUND FLOOR



## GARDEN SUITE



When connected, the Garden Room and Winchester form the Garden Suite. Together these rooms are capable of hosting 60 delegates in class-room style or can accommodate up to 120 guests for a banquet.

**Dining: 120 delegates**

**Theatre: 106 delegates**

**Classroom: 60 delegates**

**Boardroom: 44 delegates**

**Cabaret: 54 delegates**

*Dimensions: 17.36m x 10.06m x 4.20m (l x w x h)*



# GARDEN ROOM



With large windows and bright, airy interiors, the Garden Room is ideal for meetings. As well as air-conditioning, this beautiful ground floor space has double doors leading to the hotel's gardens and is a stone's throw away from the Reception and Main Bar areas.

**Dining: 60 delegates**

**Theatre: 60 delegates**

**Classroom: 32 delegates**

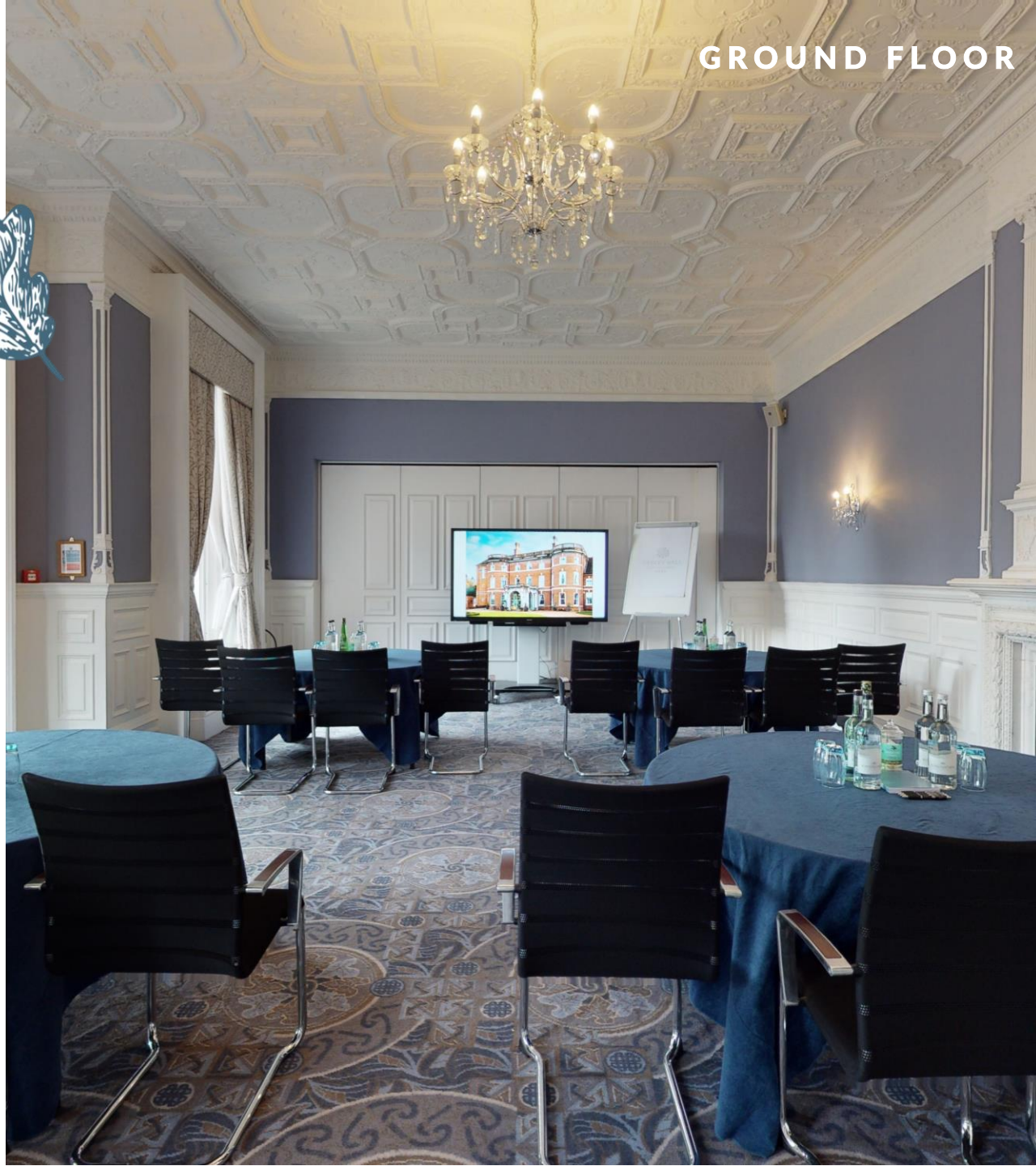
**Boardroom: 28 delegates**

**Cabaret: 40 delegates**

*Dimensions: 10.97m x 7.20m x 4.20m (lwxhx)*



GROUND FLOOR







## WINCHESTER



Just like the Garden Room, the Winchester is on the ground floor and has plenty of natural daylight. It can accommodate meetings or presentations of up to 22 guests in the boardroom-style or up to 60 guests for dining.

**Boardroom: 22 delegates**

**Theatre: 60 delegates**

**Classroom: 32 delegates**

**Dining: 60 delegates**

**Cabaret: 24 delegates**



*Dimensions: 10.06m x 6.09m x 4.20m (l x w x h)*



## LIBRARY



The Library features a beautiful Georgian fireplace, has plenty of natural daylight, and is fully air conditioned. With room for 25 delegates in boardroom-style, or 28 in classroom-style setup, it's perfect for smaller meetings and presentations.

**Boardroom: 25 delegates**

**Theatre: 60 delegates**

**Classroom: 28 delegates**

**Dining: 40 delegates**

**Cabaret: 34 delegates**

**Dimensions: 10.97m x 4.87m x 4.20m (l x w x h)**







## STEVENTON



Located on the first floor, our Steventon Room can accommodate meetings for 24 in boardroom-style or 36 in a classroom layout. Three large south facing windows fill the space with natural daylight, and it's also fully air conditioned.

**Boardroom: 24 delegates**

**Theatre: 60 delegates**

**Classroom: 36 delegates**

**Dining: 60 delegates**

**Cabaret: 24 delegates**

*Dimensions: 10.97m x 5.80m x 4.20m (lwxh)*



# AUSTENS



The Austens Room is one of our smaller meeting spaces, accommodating up to 24 delegates in a boardroom-style layout or up to 60 in theatre-style. It has plenty of natural daylight and is also fully air conditioned.

**Boardroom: 24 delegates**

**Theatre: 60 delegates**

**Classroom: 28 delegates**

**Dining: 48 delegates**

**Cabaret: 32 delegates**

*Dimensions: 10.06m x 6.09m x 4.20m (l x w x h)*







## ALTON



The Alton Room can be found on the first floor, however it is a much smaller space. With room for 16 delegates in a boardroom layout, or up to 30 for a dinner party, it's suited to smaller meetings and get together.

**Boardroom: 16 delegates**

**Theatre: 40 delegates**

**Classroom: 24 delegates**

**Dining: 30 delegates**

**Cabaret: 18 delegates**

*Dimensions: 8.23m x 5.48m x 4.20m (lwxh)*





## ADDITIONAL EXTRAS FOR YOUR MEETING



**LCD PROJECTOR & SCREEN:** £120 per day

**75" TV:** £120 per day

**FLIPCHART:** £22.00 each per day

**CONFERENCE PHONE:** £50.00 per day

**PHOTOCOPYING:** £0.20 per page

**LECTURN:** £50.00 per day

**CLICKER:** £20.00 per day

**SYNDICATE ROOM:** from £300.00 per day

**DEDICATED BANDWIDTH:** Price on request

**All items listed above are subject to availability unless pre booked.**



# TEAM BUILDING

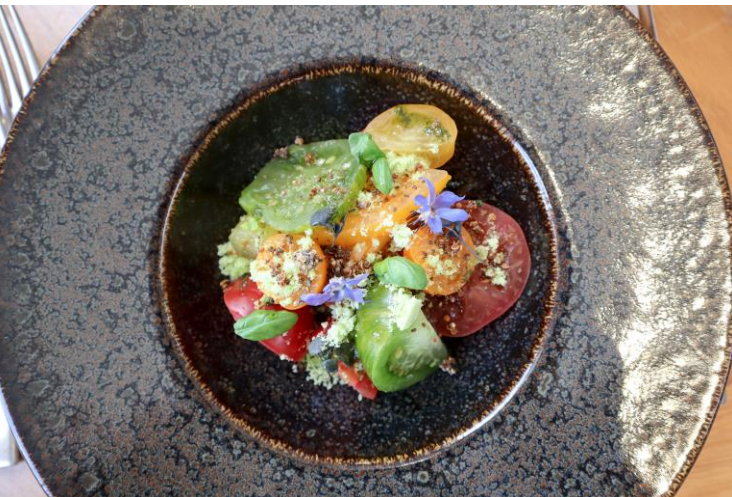
Our 315-acre grounds are ideal for corporate hospitality days and team building events. We work closely with several local events companies to deliver a wide variety of activities, from human duck herding and motorized sports to giant inflatable courses and crystal maze games!





## DINING

Indulge in a selection of seasonal dishes chosen by our award-winning chefs. Whether you're looking to enjoy a locally sourced meat or try a sumptuous vegetarian or vegan alternative, we've got something for everybody to enjoy.





## EXPLORE OUR PRIVATE DINING SPACES





## ACCOMMODATION

Our collection of fifty bedrooms includes thirty-seven Deluxe Bedrooms, six Executive Bedrooms, two Courtyard Suites, two Four Poster Suites and the three-bedroom Garden Cottage. All feature beautiful period details and flat-screen TVs with on demand movies, as well as complimentary Wi-Fi.







## FIND OUT MORE

For more information or to obtain a quote for your next company event,  
please contact our friendly events team.

01256783350

[enquiries@oakleyhall-park.com](mailto:enquiries@oakleyhall-park.com)

[Online Enquiry Form](#)

---