

EGG LDN 2022

SUMMER BROCHURE



EggLDNevents



EggEventsLondon



5-13 Vale Royal
eggeventslondon.co.uk



About the Venue

Egg London is an iconic veteran of London's nightlife scene - a colossal warehouse club, famous for pumping out great party vibes late into the night. Not content with just being a great



night out, this huge, multifaceted events space also turns its hand to a wide variety of private and corporate events too, from product launches and awards ceremonies to themed parties and networking events.

Egg's size and versatility means that it provides many different event spaces, each of which can easily be adapted to fit the needs of a huge range of events. Egg boasts some of the best sound and light tech anywhere in London, so it naturally specialises in creative events - many of the spaces within the venue feature programmable lighting systems, and all of them have built-in DJ booths for live performance, complete with top-of-the-range professional kit from Pioneer, Technics and Allen & Heath.

In addition, you'll find three state-of-the-art sound systems at Egg - Ground Floor sound is provided by L'acoustics, the Middle Floor has a thumping KV2 rig, and music in The Loft comes courtesy of Funktion 1. The advantage of three independent sound systems is that each floor can run its own music, with no sound leakage or crossover between them.

Egg London's standout space is the Ground Floor, a huge versatile area that can be turned into anything from an exhibition space to a banquet, reception or a straight-up party for 550 people. The long bar area provides ample accessibility for big groups to get served, and there are VIP areas available that overlook the main floor.

The Middle Floor is similarly spacious, but the ceilings are lower than the cavernous Ground Floor, making this a great space for live performances and events. This huge dance floor has state-of-the-art AV, lighting and laser set up, as well as its own VIP area with private bar, and a terrace.

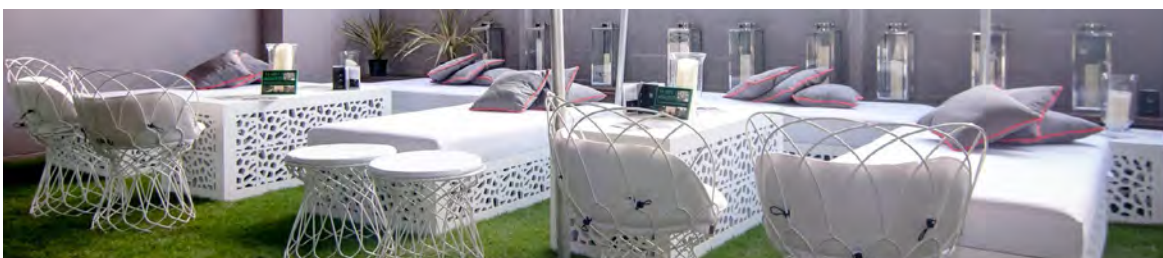
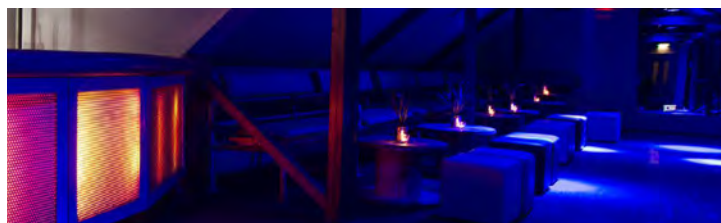
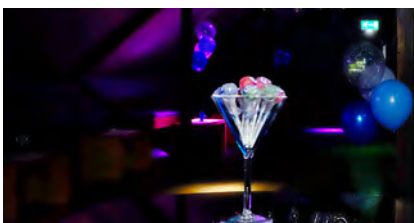
Finally, head right up to the top of Egg London and you'll find The Loft. This has an altogether calmer, more intimate feel, making it perfect for use as a breakout area, or for cosier events for up to 200 people. The loft uses local reclaimed materials to create an industrial vibe, and it has its own DJ booth, private entrance and private roof terrace.

For those interested in laying on food for an event, catering is available via a variety of street food vendors in the main smoking area.

Loft & Terrace



The Loft's intimate ambiance is perfect for the smaller celebrations or Pre-club hire, whilst providing an ideal breakaway area from your main event for cocktails and canapes. A cross between a unique industrial style interior crafted with reclaimed materials from the local area and low-level lighting framed by New York loft style wooden beams, exclusive fill is further enhanced by its own entrance DJ booth and dance floor, looking out on a private roof terrace.



Loft & Terrace features

Capacity

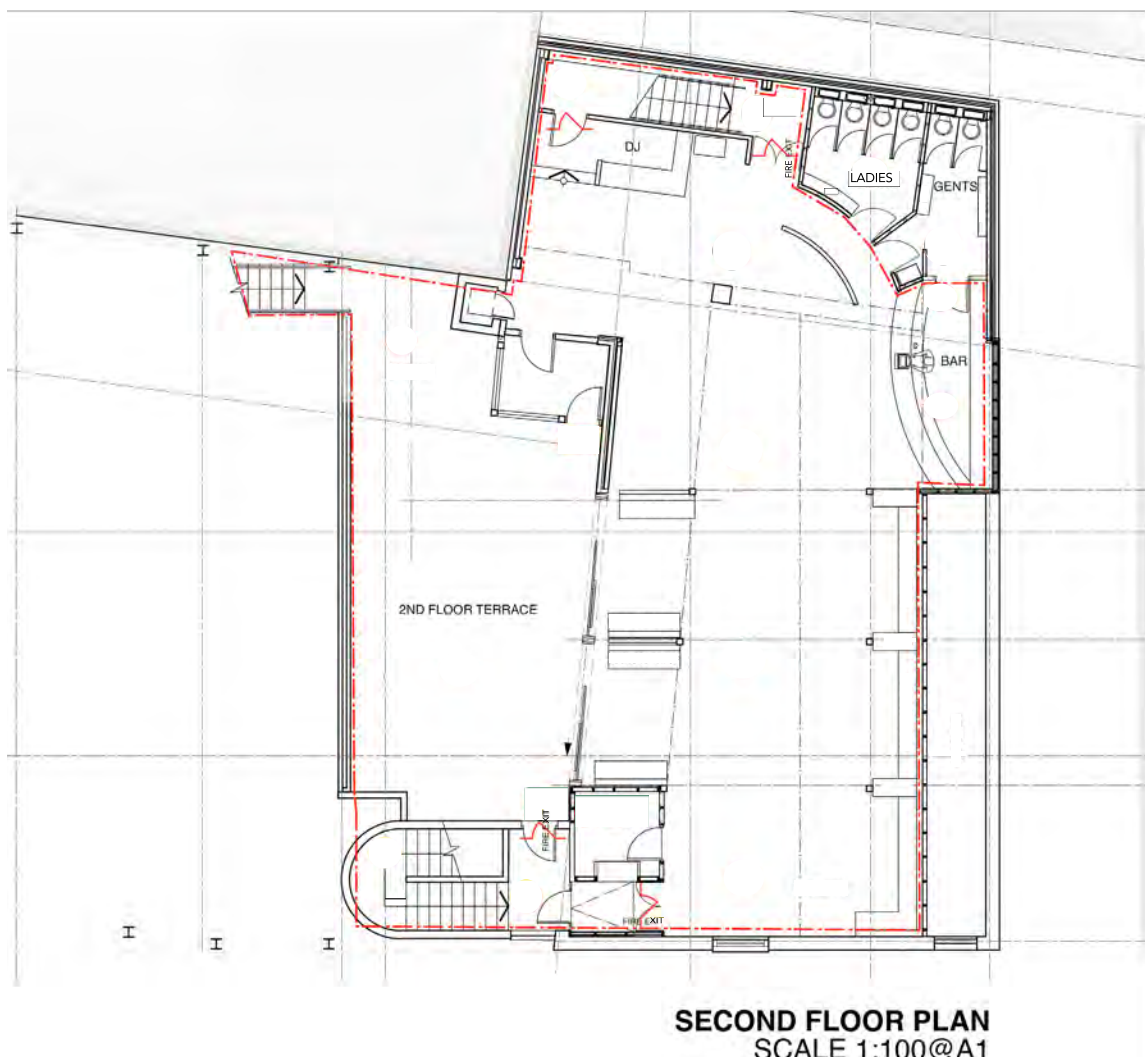
Reception 200
Banquet 40

Includes

Events manager on site
Technician on site
Complimentary Wifi
Cloakroom
Event design
State of the art sound and lighting
Breakout areas
Outdoor smoking area

Lighting and tech Features

Funktion One sound system
Res2.x4
Res218 x4
F88x4
Lab Gruppen IPD Amplifiers.
Pioneer DJM900x1
Pioneer CDJ 2000nx2 x2
Wireless Microphone Kit
Programmable Lighting system



Ground Floor



Egg London's standout space is the Ground Floor, a huge versatile area that can be turned into anything from an exhibition space to a banquet, reception or a straight-up party for 550 people. The long bar area provides ample accessibility for big groups to get served, and there are VIP areas available that overlook the main floor.



Ground Floor features

Capacity

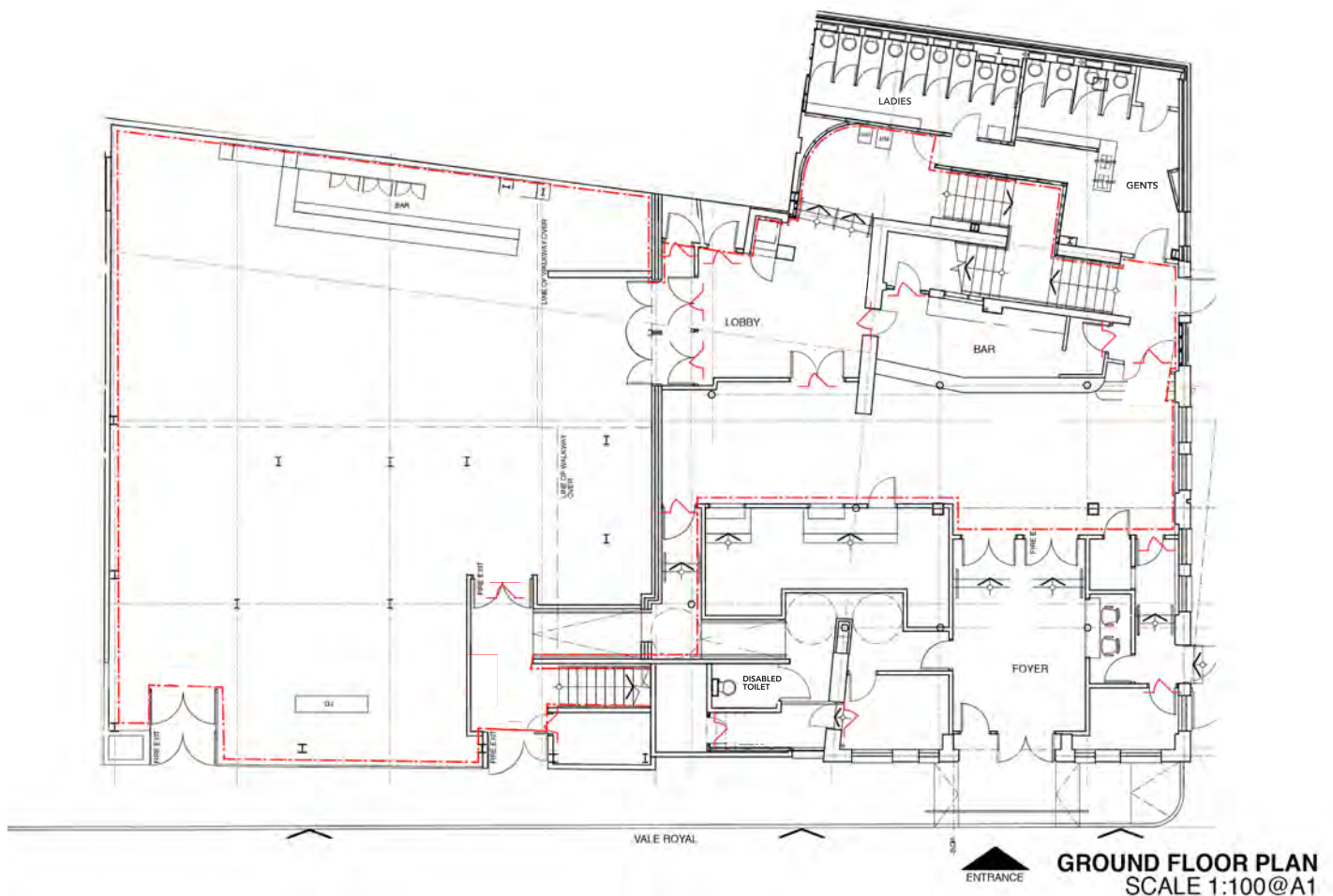
Reception 550
Banquet 100
Theatre 200

Includes

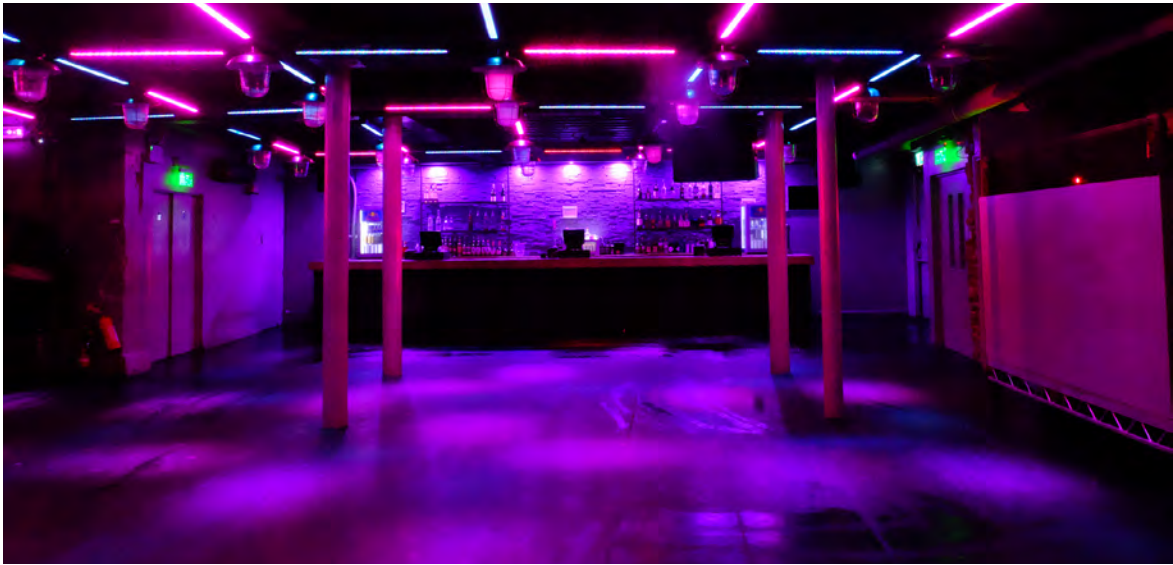
Events manager on site
Technician on site
Cloakroom
Event design
Complimentary WIFI
State of the art sound and lighting
Breakout areas
VIP Area

Lighting and tech Features

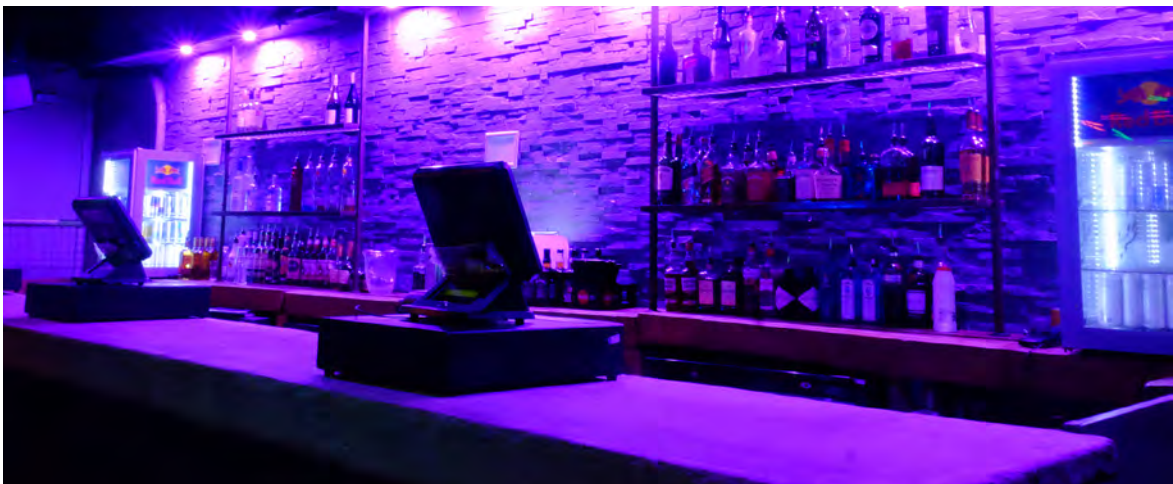
SB18 x12
Pioneer DJM900x1
Pioneer CDJ 2000nx2 x2
Wireless Microphone Kit
Programmable Lighting



Middle Floor & Terrace



The Middle Floor is similarly spacious, but the ceilings are lower than the cavernous Ground Floor, making this a great space for live performances and events. This huge dance floor has state-of-the-art AV, lighting and laser set up, as well as its own VIP area with private bar, and a terrace.



Middle Floor and Terrace features

Capacity

Reception 250
Theatre 70

Includes

Events manager on site
Technician on site
Cloakroom
Event design
Complimentary WIFI
State of the art sound and lighting
Breakout areas
VIP Area
Outdoor smoking area

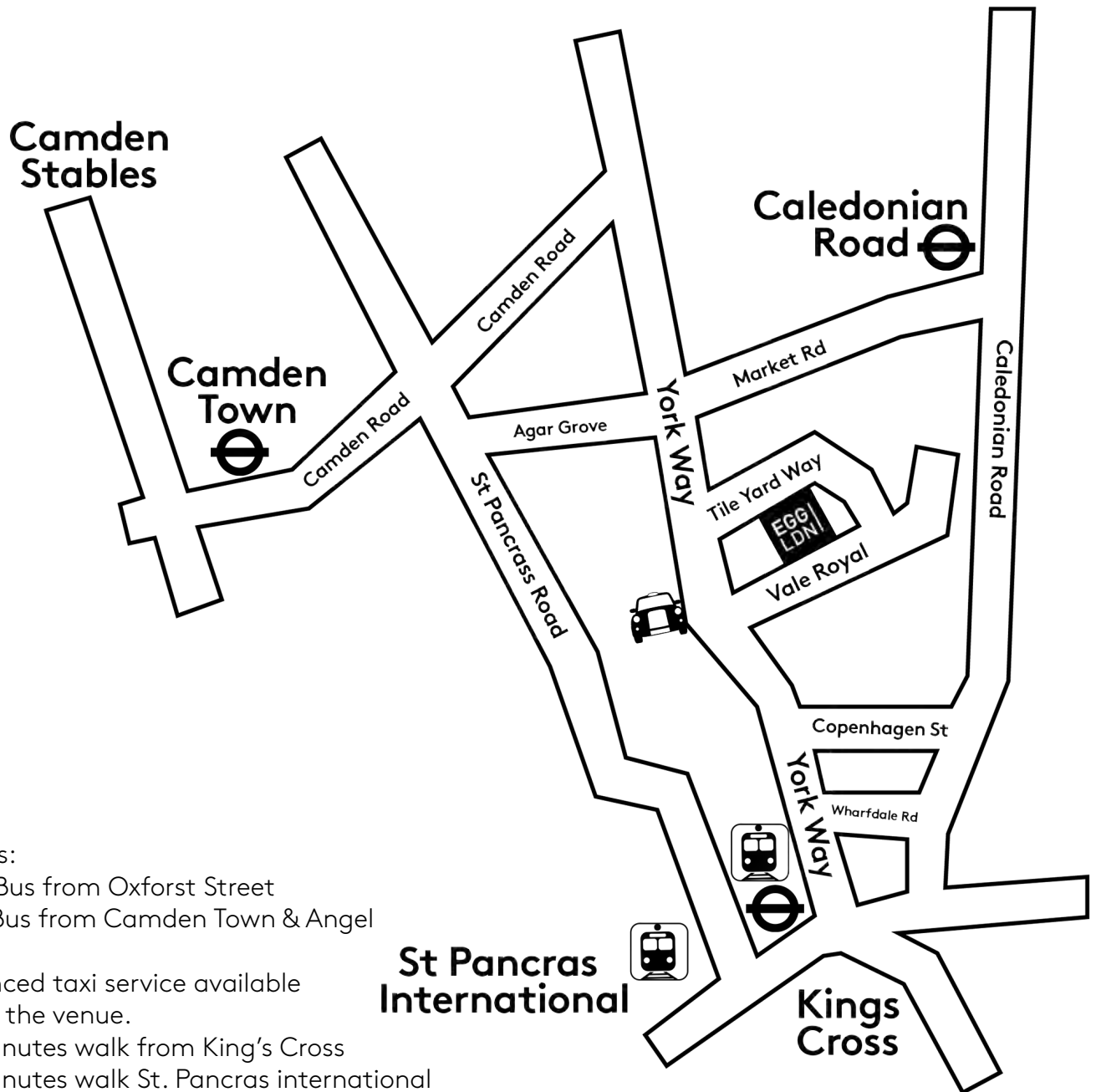
Lighting and tech Features

KV2 Soundsystem
VHD x4
ES1.5 x2
ES.21 x4
EPAC amplification
Pioneer DJM900x1
Pioneer CDJ 2000nx2 x2
Wireless Microphone Kit
X32 Desk.
Programmable Lighting



FIRST FLOOR PLAN
SCALE 1:100@A1

How to get to the venue



Buses:

390 Bus from Oxforst Street

274 Bus from Camden Town & Angel

Licenced taxi service available
from the venue.

12 minutes walk from King's Cross

12 minutes walk St. Pancras international

20 minutes walk from Camden town

Santander Cycle

Tubes

Circle, Hammersmith & City and Metropolitan

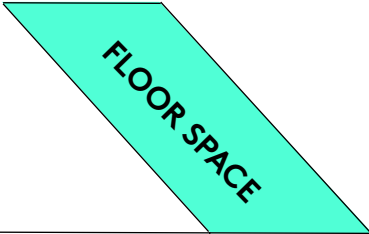
Northern

Piccadilly

Victoria

Paid Parking outside

Egg Floor Space Zones



				Total
No.	Room	Activity	Sq Ft	Sq Ft
1	Ground Floor	Main Dance Floor Area	1,785.00	1,785.00
2	VIP Area	Mini Stage	138.00	138.00
3	Middle Floor	Main Dance Floor Area	1,505.00	1,505.00
4	VIP Area		312.00	312.00
5	Marquee		620.00	620.00
6	Green Room		189.00	189.00
7	Loft	Main Dance Floor Area	1,612.00	1,612.00
8	Loft Terrace	Smoking Area	720.00	720.00
9	Reception	Interior Lobby (- NOT entrance)	420.00	420.00
Total (Useable) Floor Space			7,301.00	7,301.00

Clients



Aol.



AMNESTY
INTERNATIONAL



Debenhams



London
**Evening
Standard**

CREDIT SUISSE



FRENCH CONNECTION

TESCO



Corporate Events Manager : jade@eggilondon.co.uk
5-13 Vale Royal, London N7 9AP
www.eggeventslondon.co.uk

VAT No: GB 307492892