

BVLGARI
HOTEL LONDON



PRIVATE ENTERTAINING,
MEETINGS & EVENTS

CONTENTS

INTRODUCTION

THE BALLROOM

VIRTUAL AND HYBRID EVENTS

PRIVATE CINEMA

THE BOARDROOMS

MEETINGS ROOMS AND PRIVATE OFFICES

PRIVATE DINING

SETTE BY SCARPETTA

NOLITA SOCIAL

CAPACITY AND ADDITIONAL INFORMATION

“THE ONLY WORD ELIZABETH KNOWS IN
ITALIAN IS ‘BVLGARI’.”

RICHARD BURTON



AN ELEVATED EXPERIENCE

Bvlgari Hotel London lends a prestigious context to all types of private entertaining, weddings, meetings and events. The hotel's elegant and contemporary Italian design is uniquely Bvlgari, showcasing a style that is enduringly glamorous yet refined and sophisticated.

The collection of event spaces are both beautiful and functional, featuring the latest technology and are flexible to suit all occasions and sizes, both social and corporate. A professional and dedicated team provide personal and impeccable service, with the guest experience further enhanced by the option to stay overnight in a spacious room or suite, or enjoy the sanctuary of Bvlgari Spa London.

With a convenient and renowned location in Knightsbridge, the hotel is moments from world-famous department stores Harrods and Harvey Nichols, and an array of international boutiques along Sloane Street.

Immediately opposite the hotel is the 350-acre expanse of Hyde Park, to the west are the museums and cultural destinations at South Kensington, while the attractions of London's West End are a short car ride away.



BVLGARI
WATCH & JEWELLERY

BVLGARI

171

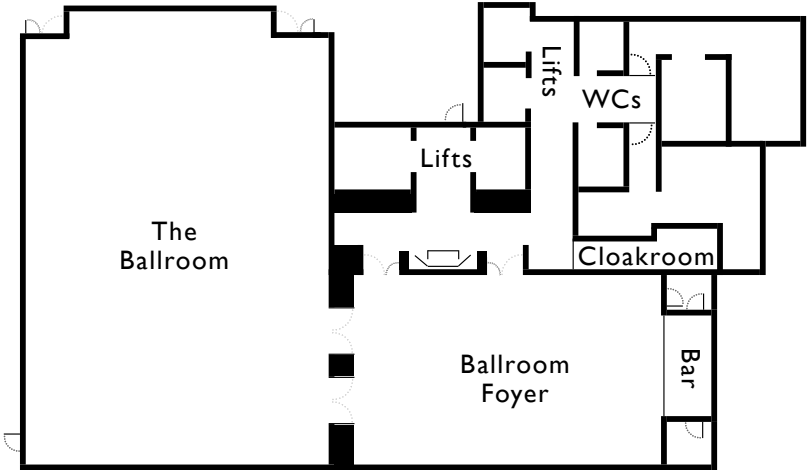


THE BALLROOM

THE BALLROOM

The Ballroom offers a majestic and stylish space for corporate and social events alike. Occupying an entire floor of the hotel, and served by dedicated lifts from the hotel’s lobby, guests are afforded total privacy and exclusivity. With a pair of impressive solid silver Bvlgari chandeliers overhead, the room is serviced by sophisticated lighting and audio technology, including a Bose loudspeaker system for ambient music.

The adjoining Ballroom Foyer offers a smaller space with a built-in bar and the same audio capabilities as The Ballroom. Newly licenced for wedding ceremonies and receptions, the two rooms can be hired individually or together, providing flexible event solutions while adding an air of Bvlgari glamour and prestige.



CAPACITIES

BALLROOM:	
Dining seated	150
Dinner & Dance	120
Classroom	80
Theatre	100
Standing reception	160
(including Foyer)	280
U-Shape	50
Boardroom	50
Cabaret	80

BALLROOM FOYER:	
Standing reception	120
Dining	40
Boardroom	24

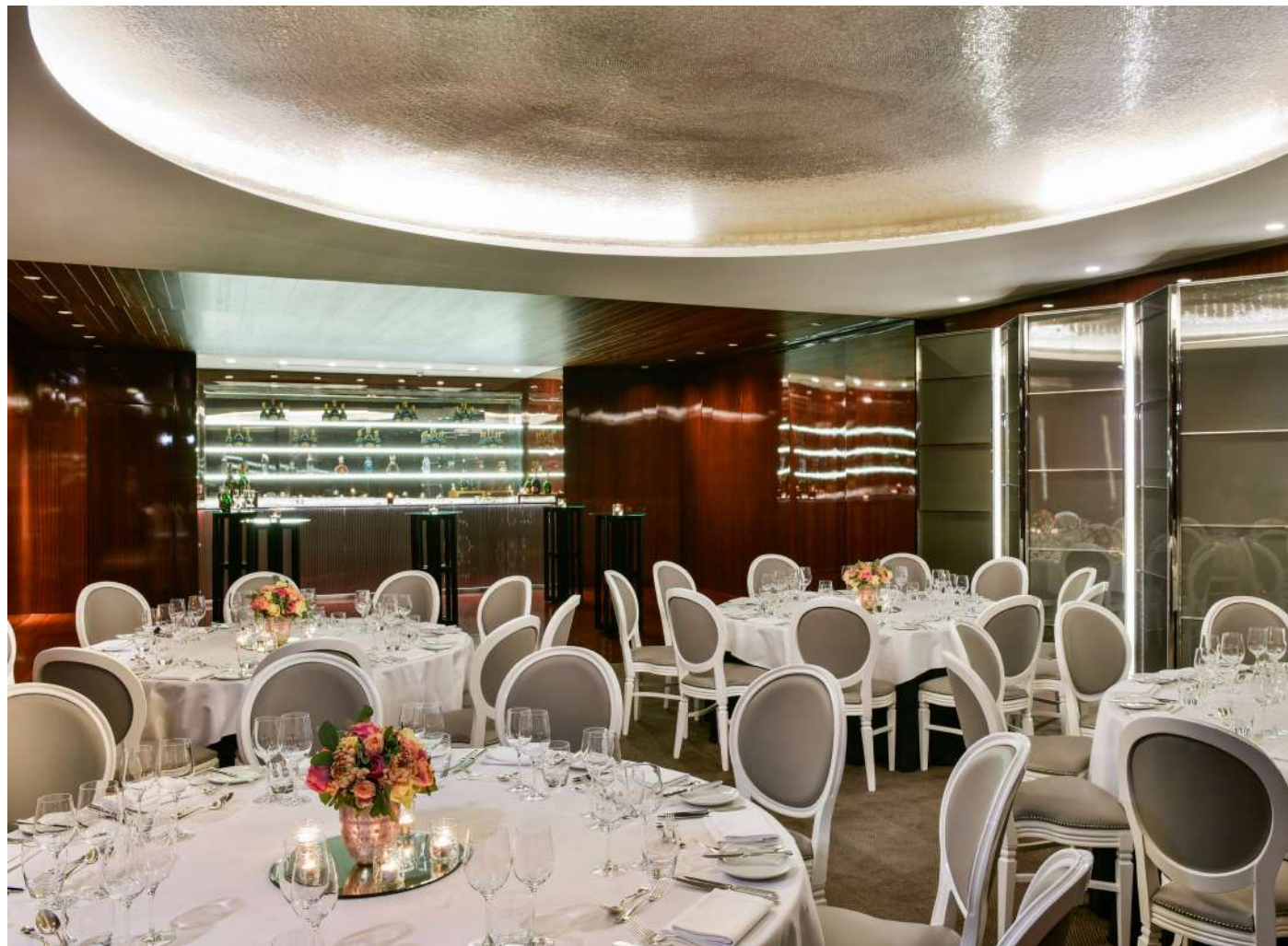
CAPACITIES UNDER COVID-19 GUIDELINES

BALLROOM:	
Dining seated	80
Classroom	48
Theatre	64
Standing reception	90
(including Foyer)	140
U-Shape	29
Boardroom	22
Cabaret	55

BALLROOM FOYER:	
Standing reception	50
Dining	25
Boardroom	16



THE BALLROOM



THE BALLROOM FOYER



THE BALLROOM

VIRTUAL OR HYBRID MEETINGS AND EVENTS

Bulgari Hotel London can host clients for all manner of virtual and hybrid events, ranging from individual video conference calls through to large scale virtual award ceremonies and presentations.

Our specialist Logitech conference camera can be used in any of our meeting rooms, providing high definition video quality for every seat at the table using 4K optics and a super-wide 120-degree field of view. Its intelligent audio configuration ensures crystal clear sound with three beamforming mics and a custom-tuned speaker.

For larger virtual events, The Ballroom is an ideal venue for setting up a green screen studio, using the latest technologies to deliver a seamless event experience for the audience at home. Using our trusted event production company, clients can live stream video feeds - with virtual enhanced backgrounds edited onto the green screen - to viewers around the world, who can engage in real time with the presenters via a live chat system.

[Watch this film](#) to see a green screen studio set-up in action.

GREEN SCREEN VIRTUAL STUDIOS

The complete set-up and production is managed by an experienced and dedicated team of audio video professionals, delivering a truly remarkable event.

Equipment hire and additional servicing costs for green screen virtual studios will vary based on specific event requirements - please contact us to discuss further and for bespoke pricing options.

Configuration options include:

- Complete green screen studio with professional lighting rigs
- Broadcast-quality cameras and microphones, operated by specialist Audio and Vision Engineers
- A custom microsite to host the live stream with software for delegates to access internationally, with custom branding
- All necessary vision mixing and switching software, plus broadcasting and hosting services managed by a Streaming Technician



A VIRTUAL EVENT STUDIO IN THE BALLROOM



THE PRIVATE CINEMA

THE PRIVATE CINEMA

Providing a unique space in which to host the latest cinematic preview, an important business presentation or a compelling press announcement, Bvlgari Hotel London’s luxurious Private Cinema offers the most advanced cinema-quality HD sound and vision, 4K resolution in 2D or the latest Dolby 3D.

The Private Cinema is sound-insulated and has high-specification video conferencing and broadcasting capabilities. With dedicated audio visual support, further integrated technology includes individual electronic voting and microphones.

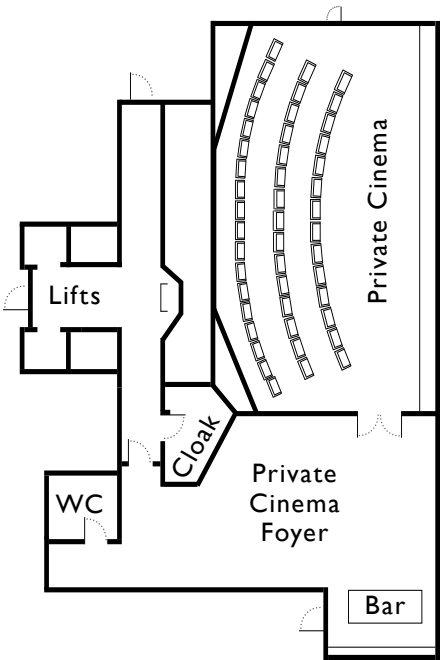
For a more intimate and exclusive cinema experience, guests can arrange their own personal film screenings. Celebrating the hotel’s silver screen heritage, a specially curated library of 300 new and classic titles is available along with the latest releases on request, and the option to watch live sports or play video games.

CAPACITIES

PRIVATE CINEMA:	
Theatre	47
CINEMA FOYER:	
Standing	47
Dining	18

CAPACITIES UNDER COVID-19 GUIDELINES

PRIVATE CINEMA:	
Theatre	16
CINEMA FOYER:	
Standing	20
Dining	8





For the ultimate silver screen experience, combine a movie with private dining held in the Private Cinema Foyer, where guests can be seated before moving to the adjoining cinema with popcorn for the show.

For larger or corporate events, extensive bowl food menus are served in the foyer, with drinks served from the ribbed steel bar.



THE PRIVATE CINEMA FOYER

PRIVATE CINEMA

- Dedicated audio visual technician
- Lectern with touch-screen control and comfort monitor
- Lectern microphone
- Lectern-based PC with DVD-ROM and USB connections
- Wireless microphones (2x lapel – 2x handheld)
- Interactive voting system (integrated in seats) with microphone
- High-definition digital cinema projector
- Dual-screen presentation with two HD secondary projectors
- Cinema-quality screen with electronic size masking
- Theatre stage lighting
- Voice reinforcement system and PA
- Induction loop for hard of hearing
- High-definition video conference facilities
- Surround programme sound system
- Visual mixing and sources (DCP, DVD / Blu-ray playback)
- CD playing
- Connections for computer and additional video sources
- Control switches for volume and media switching
- D-Cinema compliant content server
- Hotel television and radio channels

PROJECTION

- Three projectors, 1x primary screening projector with 2x secondary split screen
- Primary projection – 4K NEC DCP compliant
- Cinema projector NC3240 – 3 chip DLP based projector, lens and PSU
- 2x JVC DLA-x7 HD projectors (for dual projection)

SPECIFICATION

CINEMA FOYER

- 46" and 55" Loewe high definition LCD screens to display content from the Private Cinema
- Professional Bose speaker sound system for audio playback and ambient music

PLAYBACK SOURCES

- Dolby feature cinema server – DSS200
- Oppo multi-region Blu-ray / DVD player
- PlayStation 3 gaming system
- Sky HD satellite receiver and playback
- Hotel IPTV system HD
- Barco Image Pro2 visual mixing
- Connections for additional HD sources

SOUND SYSTEM

- 5.1 surround sound JBL Synthesis system for programme sound
- JBL SDP-40HD digital surround processor
- JBL SDEC-4000 system digital equalizer
- 5x JBL S820 two-channel amplifier 800W bridged mono
- JBL S7165 seven-channel power amplifier
- 3x JBL K2S 9900 Atlas speakers
- 6x JBL S4Ai dipole ambient surround speakers
- 2x JBL SIS-EX 18" subwoofers

PUBLIC ADDRESS

- A300 induction loop amplifier with metal loop
- 2x JBL 100v line Control 1 surface mounted speakers
- 8x JBL 100v line flush-mounted Control 1 ceiling speakers for PA System
- 3x radio handheld microphones
- 3x radio lapel microphones
- 2x lectern microphones
- Soundcraft FX16ii mixer – 16 channel with recording outputs

VIDEO CONFERENCE

- Cisco C60 system
- 1080p single/dual screen
- High-speed IP connection
- Point-to-point conferencing

SCREEN

- SMX 8.8m x 2.2m white woven fabric projection screen with side and centre motorised masking
- 2.35:1 – 516x220cm
- 1.85:1 – 407x220cm
- 16:9 – 390x220cm

SCREENING SPECIFICATION

- Dolby feature cinema server DSS200
- Barco Image Pro HD visual mixer
- Dolby CP750 audio processor
- Dolby Digital 3D System and glasses

CONTROL

- Lectern and room-based touch-screen control
- Crestron TPS-6X cordless touch screen and docking station
- Crestron room control touchscreen DM-RMC-100-F in control room
- Furman power conditioning PL-Pro DMC E presentation switcher from composite video, S-video, component
- Video, RGBHV, VGA, DVI, HDMI, PC audio, analogue audio, SPDIF inputs

LECTERN

- 3x lectern positions
- Black bespoke lecterns 123.5 x 95cm front 63cm deep with connections for data and power
- Built-in presentation PC
- Branding window on front of lectern 46.5 x 37cm (1.5cm deep maximum)
- Two lecterns – for dual presentation

SEATING

- 47 black leather seats with power and pull-out table
- three tiers of seating
- middle six seats removable to replace with sofa seating, and two side chairs removable for wheelchairs



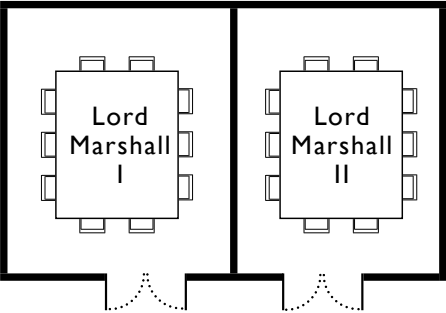
LORD MARSHALL ROOMS I & II

THE BOARDROOMS

Located in the quieter part of the hotel, Lord Marshall Rooms I and II are specifically for business meetings, offering a tranquil space for the meeting of minds to discuss, debate and inspire. Usually combined to create a single larger room, it is fully equipped with conferencing and presentation facilities including an 85” 4K screen and specialist video call camera. A range of refreshment and dining options can be served, and a private seating area immediately outside the boardrooms provides a comfortable break-out space to relax during the course of the day.

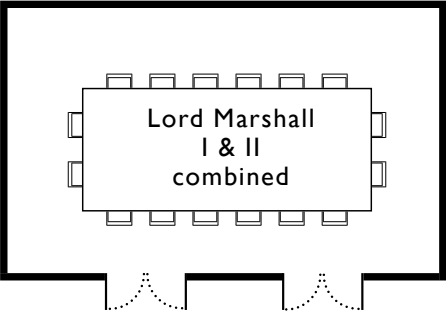
CAPACITIES

LORD MARSHALL I	
Boardroom	10
LORD MARSHALL II	
Boardroom	10
using TV	7
LM I & II COMBINED	
Boardroom	16
using TV	14



CAPACITIES UNDER COVID-19 GUIDELINES

LORD MARSHALL I	
Boardroom	6
LORD MARSHALL II	
Boardroom	6
using TV	4
LM I & II COMBINED	
Boardroom	8



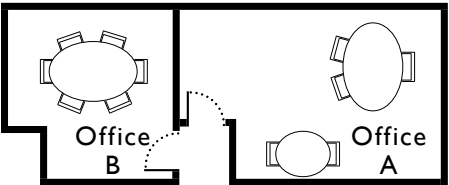
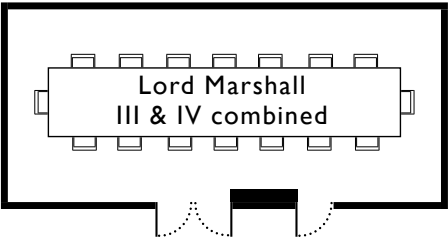


OFFICE B

MEETING ROOMS & PRIVATE OFFICES

A versatile selection of meeting rooms and private offices provide the appropriate setting for important business meetings, corporate seminars, junkets and leisure market events. The sleek mahogany and silver interiors of these rooms exude contemporary Italian style, which lends an air of intimate formality to any meeting.

Lord Marshall Rooms III and IV can be used separately or connected together to create a larger space. The two business offices are perfect for smaller gatherings such as interviews or conference calls, and all rooms can be set-up with video conferencing functionality.



CAPACITIES

LORD MARSHALL III: Boardroom	7	OFFICE A: Boardroom	3
LORD MARSHALL IV: Boardroom	7	OFFICE B: Boardroom	6
LM III & IV COMBINED: Boardroom	16		

CAPACITIES UNDER COVID-19 GUIDELINES

LORD MARSHALL III: Boardroom	5	OFFICE A: Boardroom	3
LORD MARSHALL IV: Boardroom	5	OFFICE B: Boardroom	4
LM III & IV COMBINED: Boardroom	8		



SETTE'S PRIVATE DINING ROOM

PRIVATE DINING

Guests wanting to dine privately have a selection of special spaces to choose from. Lord Marshall Rooms III & IV are a sophisticated option for formal social celebrations and important business entertaining, with imaginative menus created by the hotel's Executive Chef.

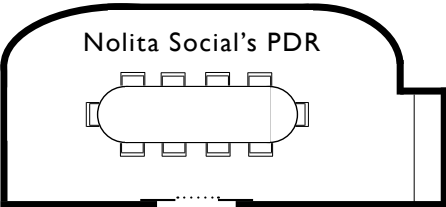
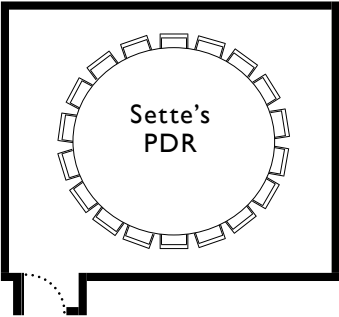
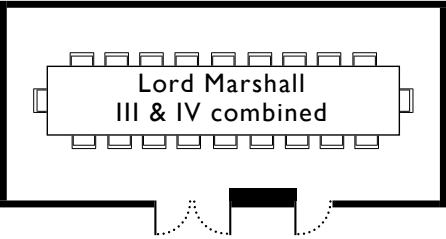
Sette by Scarpetta and Nolita Social also have their own Private Dining Rooms (PDR), discreetly located at the back of the restaurant and bar respectively, allowing guests to enjoy their modern Italian menus together with friends, family or colleagues.

CAPACITIES

LORD MARSHALL III:	SETTE PDR:	
Dining	Dining	18
LORD MARSHALL IV:	NOLITA SOCIAL PDR:	
Dining	Dining	10
LM III & IV COMBINED:		
Dining		20

CAPACITIES UNDER COVID-19 GUIDELINES

LORD MARSHALL III:	SETTE PDR:	
Dining	Dining	10
LORD MARSHALL IV:	NOLITA SOCIAL PDR:	
Dining	Dining	6
LM III & IV COMBINED:		
Dining		10

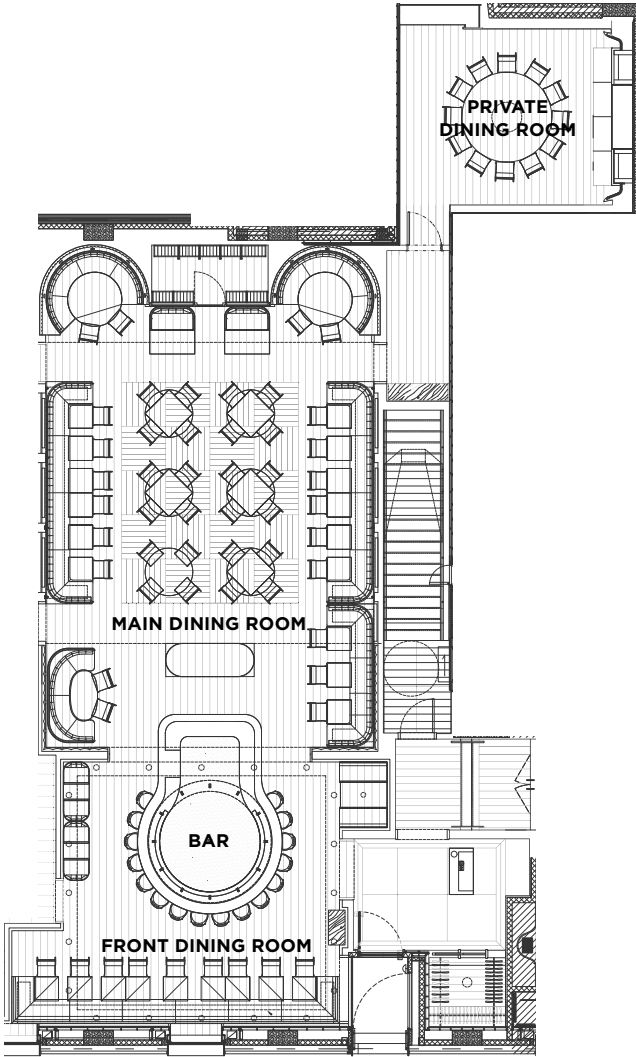


SETTE BY SCARPETTA

Sette by Scarpetta is London’s modern Italian restaurant from New York City’s Scarpetta restaurant family; bringing authentic Italian food from the heart of Manhattan with its own inimitable flair. Housed on the ground floor of the hotel, Sette has its own entrance at 4 Knightsbridge Green and is available for exclusive and semi-private hire.



SETTE BAR



CAPACITIES

FULL EXCLUSIVE HIRE:	
Dining	120
MAIN DINING ROOM:	
Dining	85

FRONT DINING ROOM:	
Dining	20
SETTE PDR:	
Dining	18

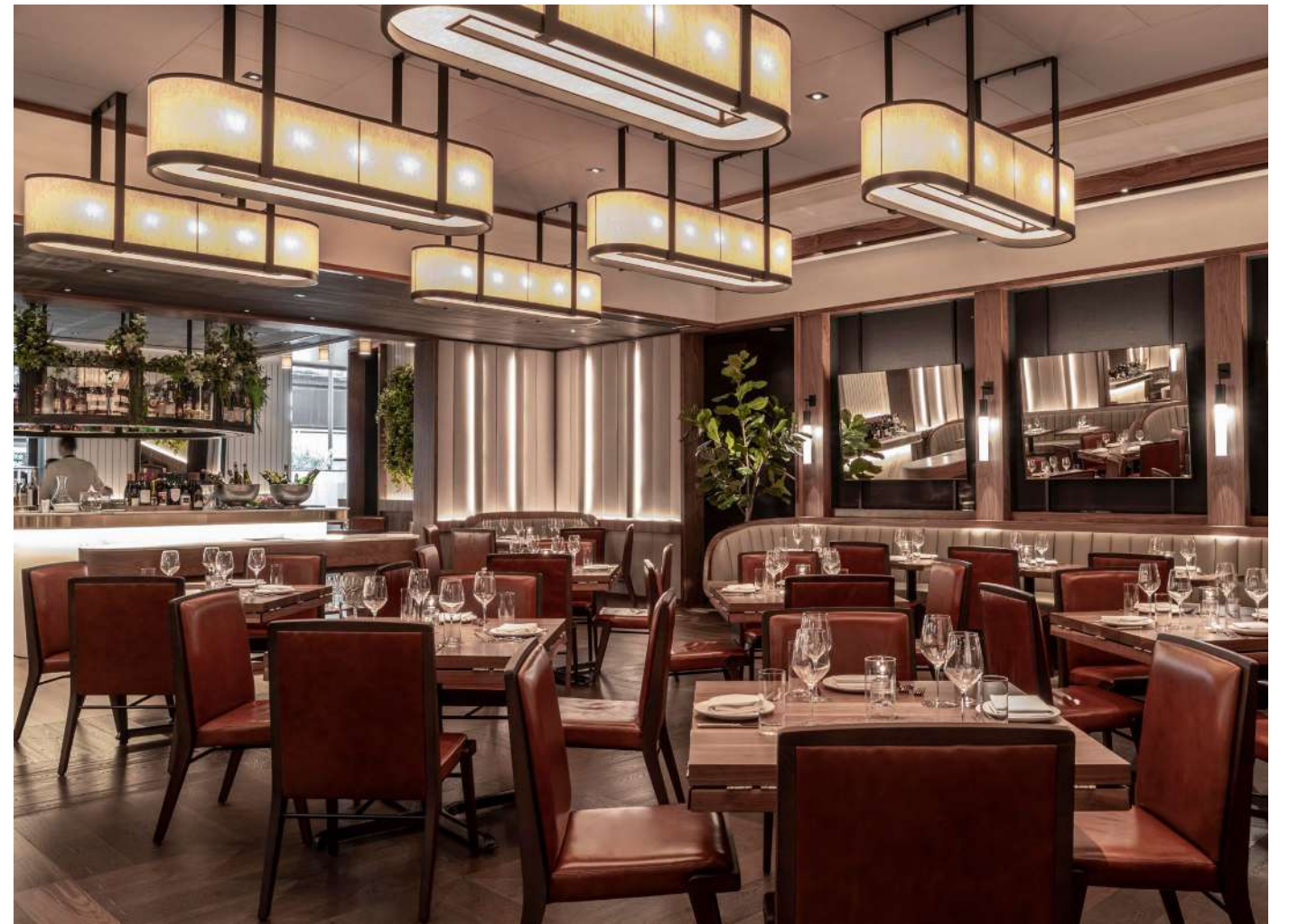
CAPACITIES UNDER COVID-19 GUIDELINES

FULL EXCLUSIVE HIRE:	
Dining	55
MAIN DINING ROOM:	
Dining	35

FRONT DINING ROOM:	
Dining	10
SETTE PDR:	
Dining	10



SETTE BAR



SETTE BY SCARPETTA'S MAIN DINING ROOM



NOLITA SOCIAL

NOLITA SOCIAL

In true ‘Dolce Vita’ style, evenings continue at the hotel in the underground bar Nolita Social, named after New York’s most charming neighbourhood, North of Little Italy.

Located downstairs from Sette restaurant and also available for exclusive private hire, Nolita Social brings the energy of ‘the New York night’ to London, with a heady mix of crafted cocktails, live music and DJs. The private dining room is the perfect place to start a night, before moving through to join the entertainment in the main bar and lounge space.

CAPACITIES

FULL EXCLUSIVE HIRE:

Seated	75
Standing	100

CAPACITIES

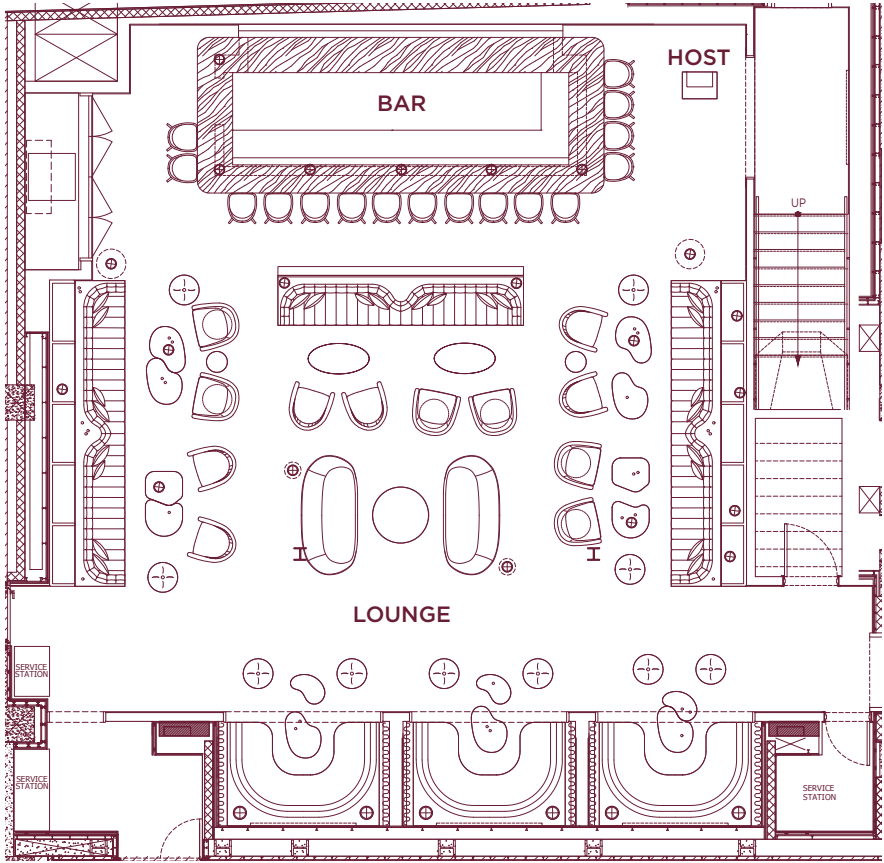
UNDER COVID-19
GUIDELINES

FULL EXCLUSIVE HIRE:

Seated	30
Standing	30



NOLITA SOCIAL



NOLITA SOCIAL

THE PRIVATE COLLECTION



THE BALLROOM

Dimensions:	Length:	Width:	Height (flat):	Height (dome):
2,755 sq ft / 256 sq m	60'0" / 18.3m	42'8" / 13m	10'8" / 3.25m	21'4" / 6.5m

Capacities / under Covid-19 Guidelines

Dining	Dinner / dance	Theatre	Standing reception	U-shaped	Boardroom
150 / 80	120	100 / 64	160 / 90	50 / 29	50 / 22



THE BALLROOM FOYER

Dimensions:	Length:	Width:	Height (flat):	Height (dome):
1,151 sq ft / 107 sq m	44'3" / 13.5m	25'3" / 7.7m	9'8" / 2.95m	10'8" / 3.25m

Capacities / under Covid-19 Guidelines

Dining	Standing reception	Boardroom
40 / 25	120 / 50	24 / 16



THE BALLROOM AND BALLROOM FOYER COMBINED

Dimensions:
3,906 sq ft / 363 sq m

Capacities / under Covid-19 Guidelines

Standing reception
280 / 140



THE PRIVATE CINEMA

Dimensions:	Length:	Width:	Height:
1,054 sq ft / 98 sq m	44'11" / 13.7m	23'0" / 7m	9'8" / 2.95m

Capacities / under Covid-19 Guidelines

Theatre
47 / 16



THE PRIVATE CINEMA FOYER

Dimensions:	Length:	Width:	Height:
699 sq ft / 65 sq m	34'6" / 10.5m	16'5" / 5m	8'3" / 2.5m

Capacities / under Covid-19 Guidelines

Standing reception	Dining
47 / 20	18 / 8



THE BOARDROOMS

Dimensions Lord Marshall I/II:	Length:	Width:	Height:
193 sq ft / 18 sq m	12'6" / 3.8m	15'9" / 4.8m	9'0" / 2.75m

Dimensions LM I&II combined:	Length:	Width:	Height:
398 sq ft / 37 sq m	25'3" / 7.7m	15'9" / 4.8m	9'0" / 2.75m

Capacities / under Covid-19 Guidelines

Lord Marshall I / II	Boardroom 10 / 6	Lord Marshall I & II combined	Boardroom 16 / 8
----------------------	------------------	-------------------------------	------------------



MEETING ROOMS

Dimensions Lord Marshall III:	Length:	Width:	Height:
215 sq ft / 20 sq m	16'5" / 5m	12'9" / 3.9m	9'0" / 2.75m

Dimensions Lord Marshall IV:	Length:	Width:	Height:
172 sq ft / 16 sq m	13'1" / 4m	12'9" / 3.9m	9'0" / 2.75m

Dimensions LM III & IV combined:	Length:	Width:	Height:
387 sq ft / 36 sq m	29'7" / 9m	12'9" / 3.9m	9'0" / 2.75m

Capacities / under Covid-19 Guidelines

Lord Marshall III / IV	Dining 10 / 5	Boardroom 7 / 5	Lord Marshall III & IV combined	Dining 20 / 10	Boardroom 16 / 8
------------------------	---------------	-----------------	---------------------------------	----------------	------------------



PRIVATE OFFICES

Dimensions Office A:	Length:	Width:	Height:
182 sq ft / 17 sq m	16'5" / 5m	12'9" / 3.9	8'8" / 2.65m

Dimensions Office B:	Length:	Width:	Height:
139 sq ft / 13 sq m	12'9" / 3.9	11'6" / 3.9	8'8" / 2.65m

Capacities / under Covid-19 Guidelines

Office A:	Boardroom 3 / 3	Office B:	Boardroom 6 / 4
-----------	-----------------	-----------	-----------------



SETTE & NOLITA SOCIAL - PRIVATE DINING ROOMS

Dimensions Sette PDR:	Length:	Width:	Height:
138 sq ft / 12.86 sq m	19'6" / 6m	15'5" / 4.7m	8'10" / 2.7m

Dimensions Nolita Social PDR:	Length:	Width:	Height:
	18'4" / 5.6m	11'6" / 3.5m	8ft 8" / 2.65m

Capacities / under Covid-19 Guidelines

Sette PDR:	Dining 18 / 10	Nolita PDR:	Dining 10 / 6
------------	----------------	-------------	---------------

COMPLETE COLLECTION



BEDROOMS

The hotel's 52 rooms are spacious, and are amongst the largest in London. Elegantly designed, they feature marbles, fine woods and unique detailing such as custom-made silk curtains, bedside table lamps inspired by Bvlgari's silver candlesticks, and a minibar resembling a travel trunk.



SUITES

23 suites offer residential-style accommodation, all benefiting from a dedicated Butler service. The seven Bvlgari Suites are the hotel's largest and feature luxurious bedrooms, living and dining spaces and a contemporary kitchen. Two Bvlgari Suites also feature large private terraces.



POOL

Bvlgari Spa London features a 25m swimming pool, created from Vicenza stone and shimmering green and gold mosaic. Private cabanas flank the pool for guests to relax in.



GYM

A state-of-the-art Workshop Gymnasium, designed entirely in cognac-coloured oak, is equipped with the latest cardiovascular and strength machines and free-weights area. Personal trainers from Workshop Gymnasium are on hand to train and advise.



LOUNGE

The Lounge is the perfect place to enjoy drinks throughout the day, such as a range of tea blends exclusively created for the hotel, or coffee and pastries throughout the day.



LOBBY

The stylish and welcoming lobby, home to the reception and concierge team, features polished black granite floors, Sapele mahogany walls and striking display cases showcasing contemporary Bvlgari silver and other Bvlgari products.



SETTE BY SCARPETTA

Sette by Scarpetta brings authentic Italian food from the heart of Manhattan with its own inimitable flair. Housed on the ground floor of Bvlgari Hotel London and with its own entrance at 4 Knightsbridge Green, it is the first London location of New York City's Scarpetta restaurant family.



THE BALLROOM

A majestic and stylish space for fashionable private events and weddings. Impressive solid silver, custom-made chandeliers add a timeless elegance to any event and an additional function area provides the ideal space for pre-event entertaining.



PRIVATE OFFICES

Two business offices provide more intimate surroundings for smaller gatherings such as interviews, meetings or conference calls.



BOARDROOMS & MEETING ROOMS

Private meeting rooms and boardrooms offer a tranquil space, fully equipped with conference and presentation facilities, for meetings and conferences. Each ideal for hosting a banquet-style meeting, the Lord Marshall boardrooms can be combined for larger meetings.



PRIVATE DINING

Private dining options, perfect for a more intimate dining experience, feature elegant interiors and bespoke menus by the head chef. There is the option to connect the two rooms for larger groups and provide more space, and Sette also has a private dining room available to hire.



PRIVATE CINEMA

A luxurious private cinema offers state-of-the-art cinema-quality sound and vision and an exclusively-curated library of more than 300 new and classic films available to guests of the hotel.



CIGAR SHOP & SAMPLING LOUNGE

Located up a discreet stairway from the restaurant is an intimate space for cigar aficionados to enjoy a rare and exquisite cigar collection, sourced exclusively from the 'jewels' of Edward Sahakian's private collection.



NOLITA SOCIAL

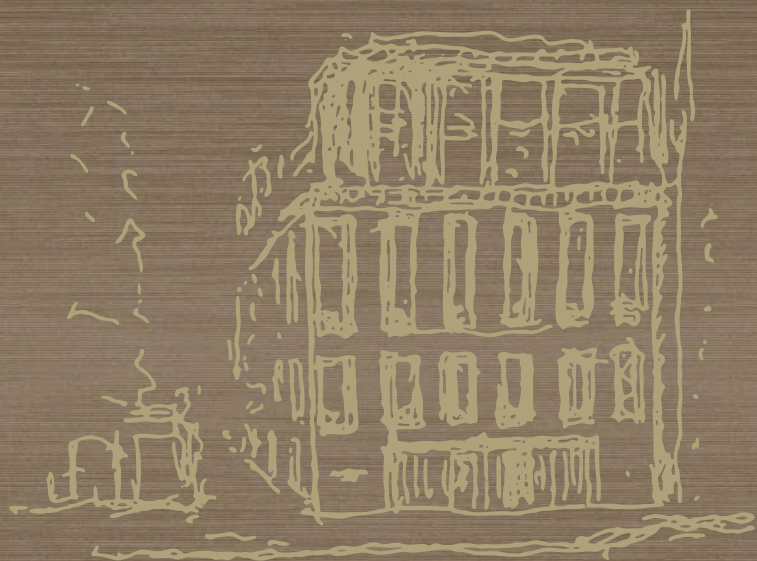
Named after New York's most charming neighbourhood, North of Little Italy, Nolita Social brings the energy of 'the New York night' to London, with a heady mix of crafted cocktails, live music and DJ's.

CONTACT DETAILS

Bulgari Hotel London,
171 Knightsbridge,
London, SW7 1DW,
United Kingdom

Tel: +44 (0)20 7151 1039/1040

Email: london-events@bulgarihotels.co.uk



Julio Allen