

THE  
LONDON  
LIBRARY

14

THE LONDON LIBRARY

# Venue Hire

Become a member  
Receive from our collection and enjoy  
beautiful spaces to read, write and think

THE  
LONDON  
LIBRARY

[londonlibrary.co.uk](http://londonlibrary.co.uk)





"Truly a place like no other."

-Helena Bonham Carter

# Hire the Library

With an enviable location directly off St James's Square and a minute's walk from Piccadilly and Pall Mall, the Library's stunning yet modest façade hides a wealth of amazing features - making it one of the most unique venue hire spaces in London.

The London Library is available for evening hire for a range of business and corporate events, including networking, dinners, receptions, awards, weddings, presentations, launches and celebrations.

Spread across seven interlocking buildings, with 17 miles of open access bookshelves and over one million books, the Library has played host to four Poet Laureates and 10 Nobel Prize winners amongst many other notable members. Featured in Time Out's 2023 list of 'London's most beautiful Libraries,' the Library offers an event experience like none other.

Alongside the beautiful architecture and rich creative history, the venue is in a perfect location for attracting delegates and clients.

020 7766 4795

[venuehire@londonlibrary.co.uk](mailto:venuehire@londonlibrary.co.uk)



# Issue Hall

Reached through the main entrance of the Library directly from St James' Square, the Issue Hall offers a grand arrival point and is the perfect welcome for all guests and clients. This historic space can be used as a registration and cloakroom area for larger standing events in the Reading Room, or a pre-dinner drinks reception area.

100 standing reception



"The capital's best-kept secret."  
-The Evening Standard

020 7766 4795  
[venuehire@londonlibrary.co.uk](mailto:venuehire@londonlibrary.co.uk)



# Reading Room

Offering stunning views across St James's Square, plus double-height, book-lined walls and elegant ironwork balustrades, the Reading Room is our main space for events and sits at the historic heart of the Library. The Reading Room provides a flexible and atmospheric space whether you are looking to host a sophisticated dinner, a presentation or a reception. As well as the main space, the balustrades can be used for speeches or small performances and offer guests a great view of the events.

200 standing reception

100 seated dinner

130 theatre style

020 7766 4795

[venuehire@londonlibrary.co.uk](mailto:venuehire@londonlibrary.co.uk)

"An unlikely union of elegance  
and unconventionality."

-Montblanc







"At once rarefied and unpredictable."

-Irish Times

## The Study

Opposite the Reading Room, the Study is perfect for intimate dining or small drink receptions. Guests can enjoy the faux regency design of the space, complete with an original Robert Adam fireplace. The Study also serves as a field kitchen for larger events hosted in the Library, and gives caterers easy access to the Reading Room and to the lift.

30 standing reception

15 seated dinner

30 theatre style

020 7766 4795

[venuehire@londonlibrary.co.uk](mailto:venuehire@londonlibrary.co.uk)



# The Art Room

This recently refurbished space, which houses the Library's extensive art and architecture collection, is a modern and inspiring space for smaller events, and works as a fantastic reception space before an intimate dinner in the Reading Room. It can also serve as a private area for VIP drinks during larger events in the Reading Room.

40 standing reception

020 7766 4795

[venuehire@londonlibrary.co.uk](mailto:venuehire@londonlibrary.co.uk)

"There is nowhere quite like it."

-Financial Times





"A literary lover's dream."

-Atlas Obscura

## The Writers Room

Situated next to the Reading Room, the Writers Room is a fantastic space for filming or photoshoots, but can also be used as an event space for smaller presentations. Complete with a mezzanine level, it has high ceilings and an airy, modern feel, whilst still keeping some of the Library's traditional charm.

30 standing reception

25 seated presentation

020 7766 4795

[venuehire@londonlibrary.co.uk](mailto:venuehire@londonlibrary.co.uk)





# Bespoke Tours

Behind the Library's elegant facade overlooking St. James's Square is a vast network of books, where since the mid-nineteenth century, seven buildings have been brought into one and a great centre of learning and ideas has been created.

This extensive network of bookstacks offers a fascinating insight into the workings of the Library. We're delighted to offer bespoke tours before or after your event to give your guests a truly VIP experience. We can also arrange special displays with books related to your organisation or your guests' interests, which makes for a truly memorable and unique experience.

020 7766 4795

[venuehire@londonlibrary.co.uk](mailto:venuehire@londonlibrary.co.uk)



"Probably the most wonderful library in the world."

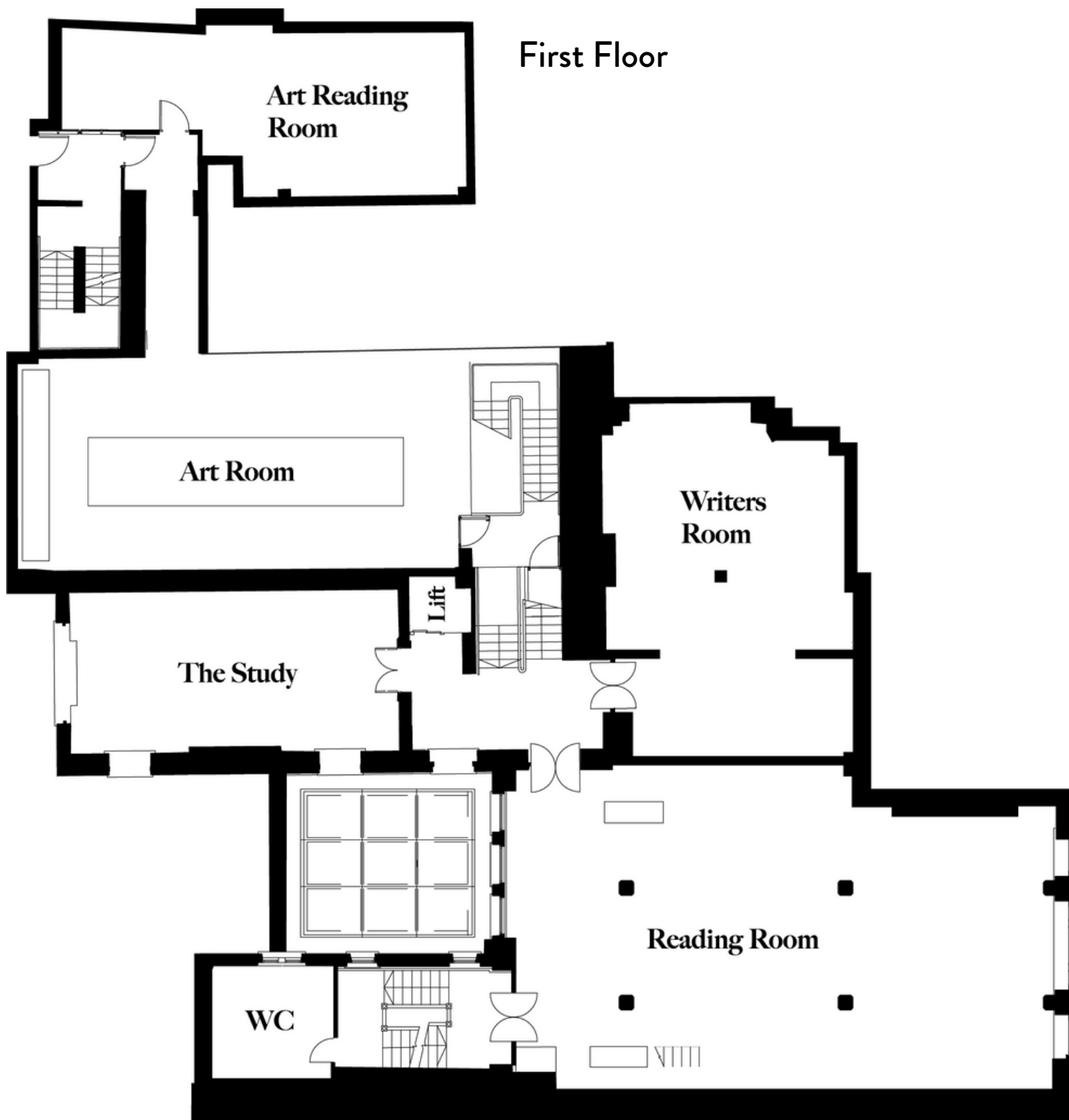
-The Evening Standard

E & MISC.

- S. Cattle &c.
- S. Cats
- S. Cartography - see Maps
- S. Carpentering
- S. Cards
- S. Capital & Labour
- S. Canoeing
- S. Canals &c.
- S. Camel
- S. Butterflies &c.
- S. Burial
- S. Bull-fighting
- S. Building
- S. Broadcasting - see Television &c.
- S. Bridges
- S. Brewing - see Beer &c.
- S. Boxing
- S. Botany (cont.)

SCIE

- S. Cattle &c. (
- S. Cavalry
- S. Caves
- S. Celibacy
- S. Censorship
- S. Census
- S. Ceremonie
- S. Chairman's Handbooks
- S. Character
- S. Charities
- S. Cheese
- S. Chemistry
- S. Chess
- S. Children &c.
- S. Christmas &c.
- S. Chronogram
- S. Chronology
- S. Cinematog



First Floor

# Hiring the Library

The Library is available to hire as space only or as an all-inclusive package Wednesday to Saturday after 5:30pm, or Sundays all day.

Hire of the Library includes exclusive use of the building, A/V equipment (projector, screen, speakers and microphones), and reception furniture (two poseur tables, bar setup, and up to 30 chairs). Optional extras include kiosks for digital signage, displays and bespoke tours.

With space hire starting from £3,000 plus VAT and tailored packages starting from £5,000 plus VAT, our dedicated events team are happy to work with you to create a memorable and unique evening for you and your guests.

We work with a range of caterers, florists and production companies with the aim of providing clients with some of the best event services London has to offer. Our Approved Suppliers have been selected for their high standards, outstanding client service and proven ability to work safely in the Library's environment.

020 7766 4795

[venuehire@londonlibrary.co.uk](mailto:venuehire@londonlibrary.co.uk)



# Caterers

## Blue Strawberry/Table Talk

simon@tabletalk.co.uk  
020 7326 5752

## Cafe Tangerine

tangerinefig@aol.com  
077200 08201

## Chilli Bees

ellie@chillibeescatering.co.uk  
0208 946 3311

## Dinner Ladies

stiritup@dinnerladiesltd.com  
020 3793 412

## Eden Caterers

events@edencaterers.london  
020 7803 1212

## Lodge Catering

ann@lodge-catering.co.uk  
0208 960 5794

## Bennett & Friends Catering

sam@bennettandfriends.co.uk  
07963352406

## Rhubarb

patrick.donaldson@rhubarb.co.uk  
020 8812 3223





# Florists

## Endeavour Floral Design

endeavour-floraldesign@hotmail.com  
07803 505 873

## Princess and Ko

info@princessandko.com  
07447 677108

## Simon Lycett

jonny@simonlycett.co.uk  
0207 277 3322



# Production

## Wise Productions

events@wiseproductions.co.uk  
020 8991 6922



# Contact & Key Information

The majority of Library event spaces have step free access and are accessible by wheelchair. For those with special access needs we have a dedicated entrance located in Mason's Yard and would be happy to provide more information.

**Email**  
venuehire@londonlibrary.co.uk

**Telephone**  
020 7766 4795

**Address**  
14 St James's Square, St James's, London, SW1Y 4LG

**Website**  
[londonlibrary.co.uk](http://londonlibrary.co.uk)

**Rail**  
Charing Cross: 15 minute walk  
Victoria: 25 minute walk

**Bus**  
The nearest bus lines are 3, 9, 12, 13, 14, 15, 19, 22, 23, 38, 94, 139 & 159.

**Tube**  
Piccadilly Circus (Piccadilly & Bakerloo): 5 minute walk  
Green Park (Jubilee, Victoria and Piccadilly lines): 10 minute walk

**Parking**  
Pay and display parking spaces in St James's Square are in operation Monday to Saturday 8.30-18.30. There is free street parking in the Piccadilly area after 18.00 Monday to Friday and all day Sunday.

