

CELEBRATE MEET CONNECT

Perfectly situated on prestigious Jermyn Street in the heart of Mayfair and Piccadilly, Mayfair Conference & Events is an ideal venue for every occasion, offering tailor-made services from our dedicated team who will ensure a seamless experience throughout your occasion.

To find out more, please contact our Events Team on:

t: +44 (0) 20 7389 3540

e: Events@Mayfairconferenceandevents.com

81 Jermyn Street | St. James's
London | SW1Y 6JF

www.mayfairconferenceandevents.com



View from the Penthouse

LOCATION

Mayfair Conference & Events enjoys a prime city centre location close to London's famous West End, art scene, culinary offerings and world class shopping destinations.

Being in the heart of Mayfair and Piccadilly ensures Mayfair Conference & Events is one of the best situated deluxe hotels in London from which to explore some of the city's most celebrated landmarks.

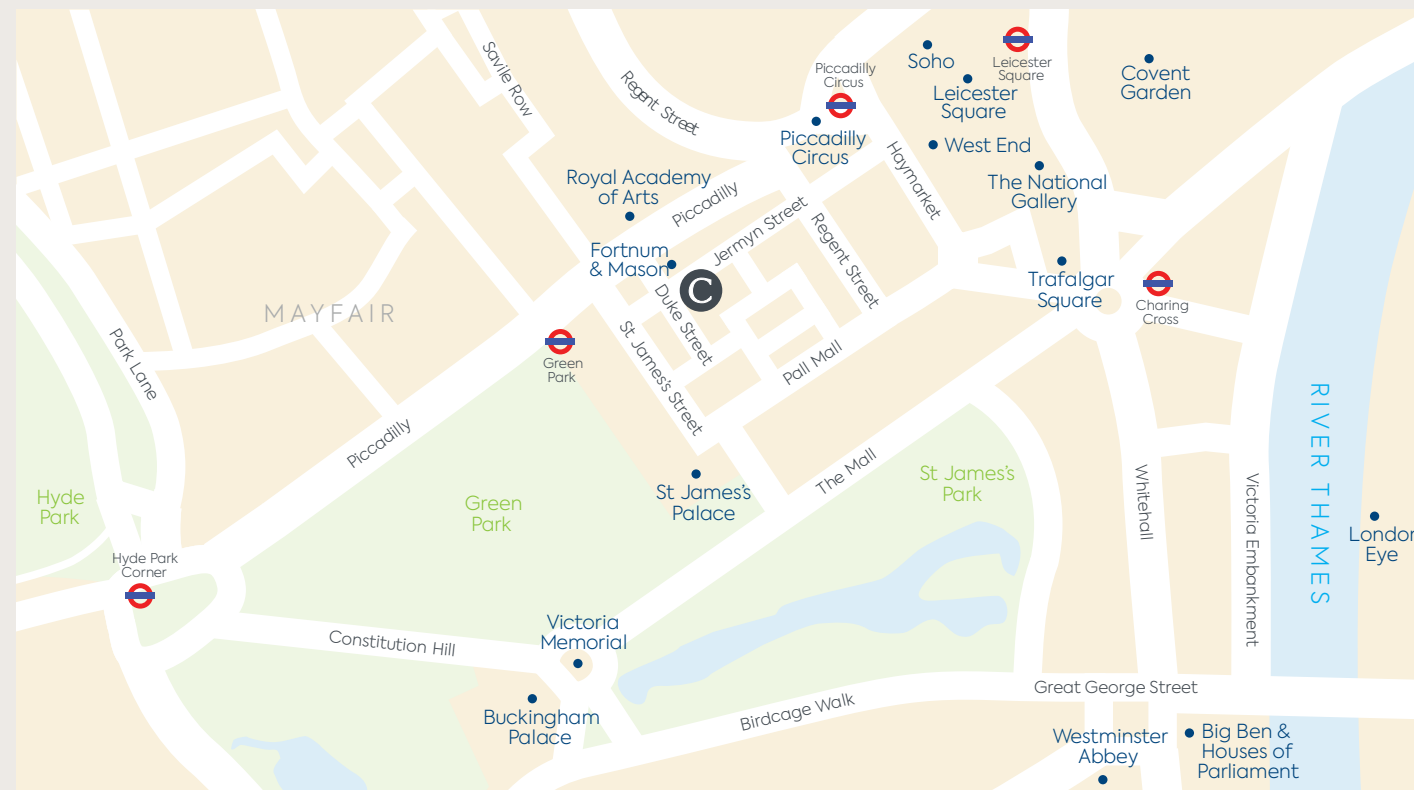
TRANSPORT

- **Piccadilly Circus and Green Park Tube Stations**
5 minutes walk
- **Kings Cross and St. Pancras International (Eurostar)**
10 minutes by Piccadilly Line
- **Heathrow Airport**
45 minutes by Piccadilly Line
- **Gatwick Airport**
60 minutes by Taxi

Wheelchair Access at Green Park Station

Attraction	Min*
Fortnum & Mason	1
Royal Academy of Arts	3
Green Park	5
Piccadilly Circus	5
West End	5
St James Palace	5
St James Park	7
Leicester Square	10
Covent Garden	11
The National Gallery	11
Trafalgar Square	12
Soho	12
Victoria Memorial	12
Buckingham Palace	13
Hyde Park	16
Westminster Abbey	19
Houses of Parliament	20
London Eye	24

*Minutes walk from the hotel



MAYFAIR CONFERENCE & EVENTS AT THE CAVENDISH LONDON

LEGENDARY LOCATION, STYLISH EXPERIENCE

MEETING SPACES

Five green meeting rooms with natural daylight, ideal for private dining, conferences, board meetings and receptions.

ST JAMES SUITE

Our principle first floor venue offers an impressive and flexible event space that has capacity for 100 delegates. Ideal for conferences, receptions and gala dinners, this space benefits from natural daylight and access to a private break-out area in the adjacent lounge.

PICCADILLY & BURLINGTON SUITE

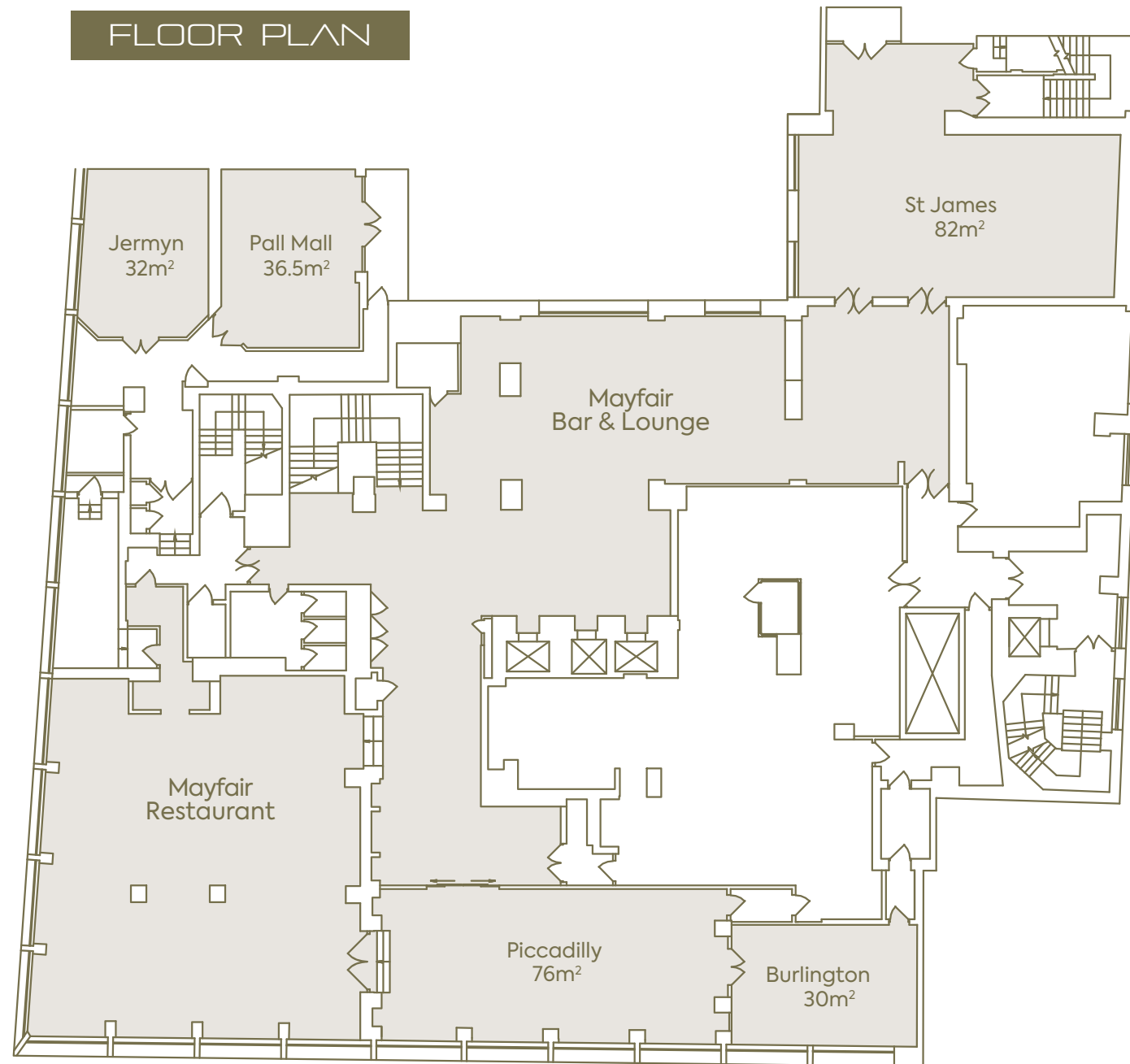
Overlooking Duke Street, Piccadilly Suite is ideal for corporate gatherings or product launches for up to 60 delegates. Piccadilly Suite also benefits from direct access to Burlington Suite, which can be used as a dedicated break-out area or exclusive private dining area.

JERMYN SUITE

City style with uncompromising comfort; Jermyn Suite offers a touch of class to boardroom meetings with capacity for 10 delegates overlooking prestigious Jermyn Street.

PALL MALL SUITE

Offering flexibility to host training courses, board room meetings or social gatherings for up to 25 delegates, Pall Mall Suite is the perfect venue for a more intimate setting.



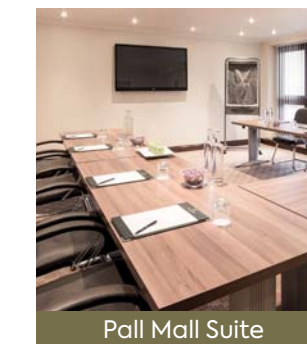
St James Suite



Piccadilly & Burlington Suite



Jermyn Suite



Pall Mall Suite

TECHNICAL SPECIFICATIONS					
	St James	Piccadilly	Burlington	Jermyn	Pall Mall
LIGHTING					
Controls in Room	✓	✓	✓	✓	✓
Dimmer	✓	✓	✓	✓	✓
Blackout	✓	✓	✓	✗	✗
SOUND					
Sound System	✗	✓	✗	✗	✗
POWER					
13 Amp Sockets	10	14	1	8	8

SERVICES & AMENITIES

- 📶 Complimentary WiFi
- 📺 LED TV & AV Equipment
- ❄️ Air-conditioning
- ☀️ Natural Daylight
- ♿️ Wheelchair Accessible
- 💧 Still & Sparkling Water
- 🚗 On-site Parking & Loading Bay
- ♻️ Carbon Free Meeting Spaces
-with recycled and fair-trade meeting stationaries
- 🍴 Mayfair Restaurant & Bar

ROOM CAPACITIES									
	Cocktail Reception	Theatre	Classroom	Boardroom	U-Shape	Cabaret 8 per table	Dinner Dance	Private Dining	Seated Buffet
St James	100	80	45	40	40	48	50	70	60
Piccadilly	70	60	35	30	30	32	-	44	44
Burlington	-	-	15	15	-	-	-	15	15
Jermyn	-	-	-	11	-	-	-	-	-
Pall Mall	-	24	15	15	15	-	-	15	15

ROOM DIMENSIONS				
	Height	Length	Width	Area Exc. Alcove
St James	3.2m	12.2m	6.3m	82m ²
Piccadilly	3.0m	13.1m	5.8m	76m ²
Burlington	3.2m	7.1m	4.5m	30m ²
Jermyn	2.35m	6.4m	5m	32m ²
Pall Mall	2.4m	6.9m	5.3m	36.5m ²