



COMO  
METROPOLITAN  
LONDON

Groups and Events  
Fact Sheet





COMO Hotels and Resorts celebrates individual spirit. Our properties worldwide are entirely different from each other while sharing respect for exceptional cuisine, meaningful wellness, contemporary design, local culture, environment and service.

We strive to deliver experiences that are unique to you and the country you are visiting, from our city hotels in London, Miami Beach, Perth and Bangkok, to island retreats in the Maldives, Turks and Caicos and Thailand, from wild lodges in Bhutan's Himalayan valleys to resorts in Bali and Italy.

This distinctive COMO approach is what makes our special events stand apart, from high-profile weddings on one of our private islands, to corporate events or incentive trips. Whatever the scale, we obsess about the details, turning ambitious ideas into precious memories worth reliving.



Entrance

## Events at COMO Metropolitan London

**Address:** Old Park Lane London W1K 1LB United Kingdom

**T.** +44 20 7447 1063/1064

**E.** [events.met.lon@comohotels.com](mailto:events.met.lon@comohotels.com)

**W.** [comohotels.com/metropolitanlondon](http://comohotels.com/metropolitanlondon)

**Located on Park Lane within walking distance of Piccadilly Circus,  
Bond Street, Knightsbridge and Hyde Park Corner**

COMO Metropolitan London is a cool, contemporary hotel with iconic status. It attracts a discerning, urban clientele – people who appreciate the hotel's unique buzz, seamless service and sleek, pared-back interiors.

Located at the capital's heart, COMO Metropolitan London is considered among the top addresses for personal and business events. Each occasion is delivered with flair, whether it's a board meeting, cocktail party, private dining, product launch or wedding celebration.

Clients can expect a personalised and attentive service. Each event is assigned a dedicated Events Executive to oversee the proceedings from start to finish, ensuring a consistent and enjoyable experience.



## COMO Metropolitan London offers:

- Five contemporary event spaces
- Touch control air-conditioning
- Built-in audiovisual facilities
- Complimentary Wi-Fi internet access in all areas
- Complimentary IT butlers to assist with AV set-up and on-site IT support
- Complimentary private dining styling, featuring fresh flowers, elegant storm lanterns and printed menus
- Seasonal private dining menus

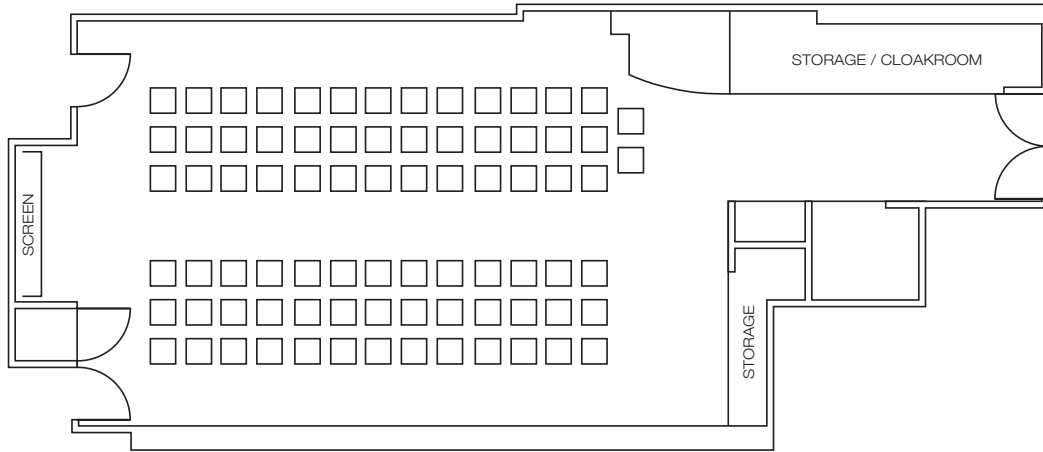


## The White Room

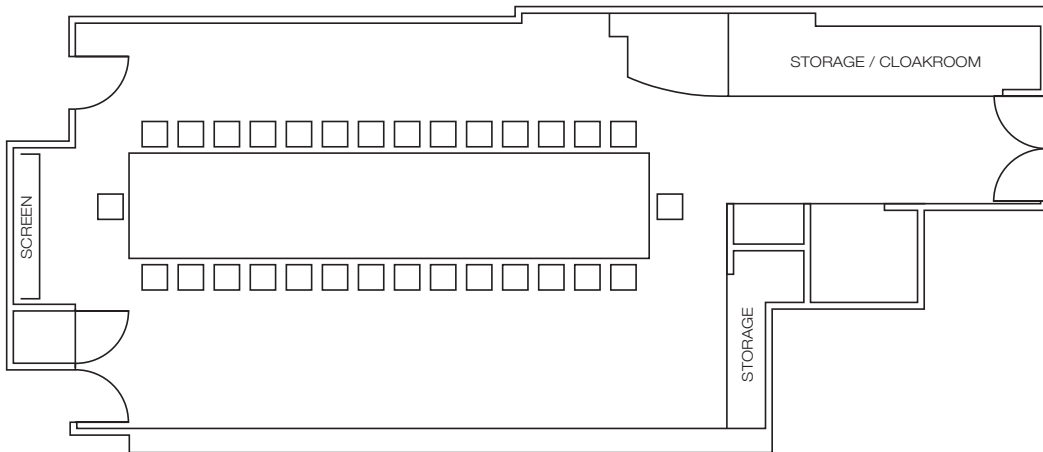
The White Room is our signature event space, where a glass pyramid ceiling provides an abundance of natural light for daytime meetings. In the evenings, the White Room transforms into a private dining room, complete with your very own mixologist for cocktail parties.

# White Room Sample Layouts

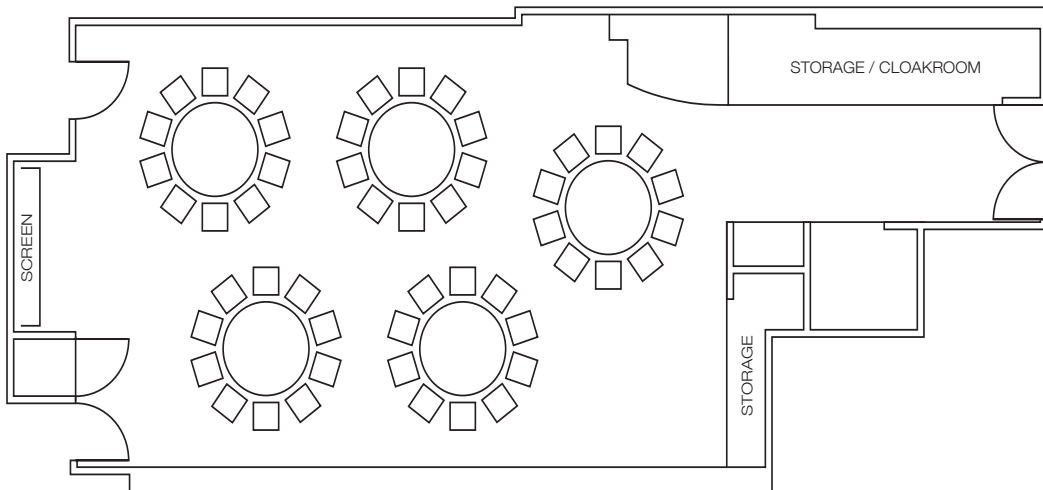
Theatre Style



Boardroom Style



Round Table Style

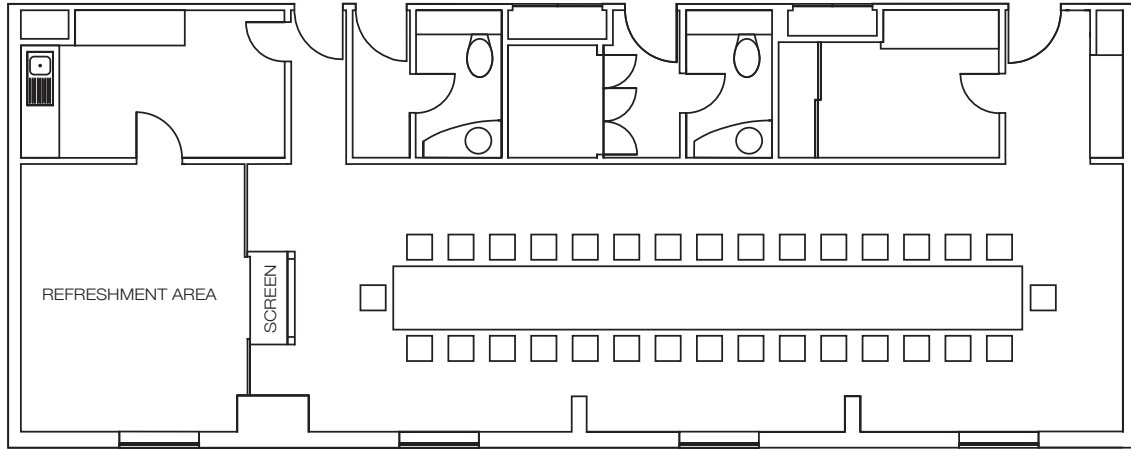




## The Met Space

The Met Space is ideal for day meetings, with sleek built-in audiovisual equipment. It also offers an elegant backdrop for a drinks reception or formal dinner in a contemporary setting. An adjoining room is accessed through sliding doors, perfect for coffee breaks.

# Met Space Sample Layout

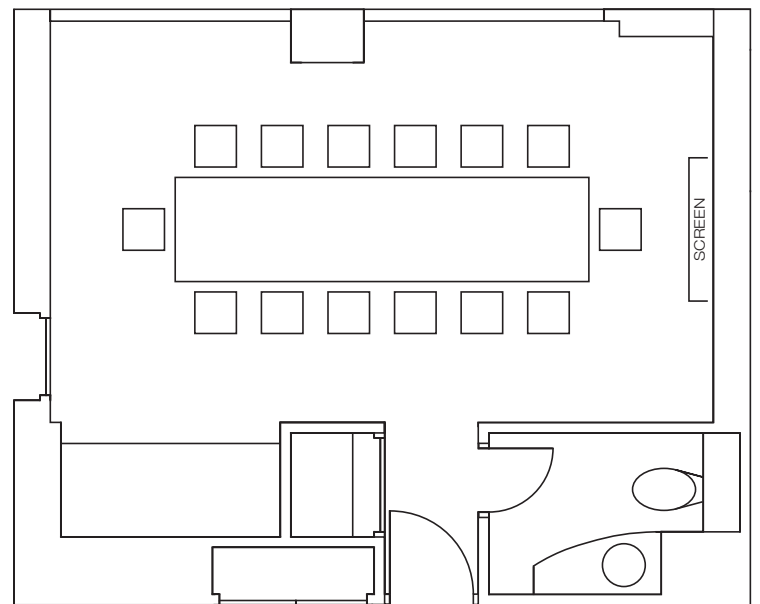






## The Met Boardroom

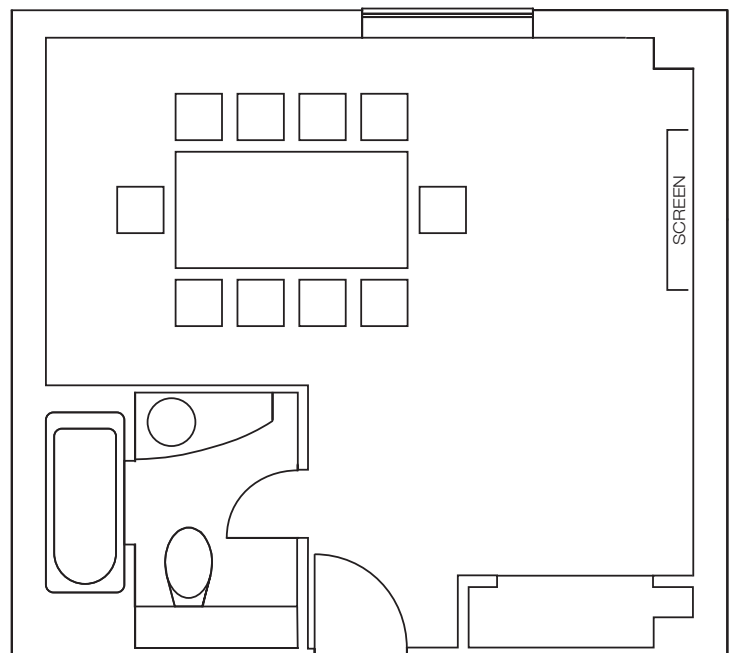
Illuminated with natural daylight, the Met Boardroom is ideal for meetings, seating up to 14 guests boardroom style and 15 for a reception. It is interconnected with the Met Studio – they can be booked together or separately.





## The Met Lounge

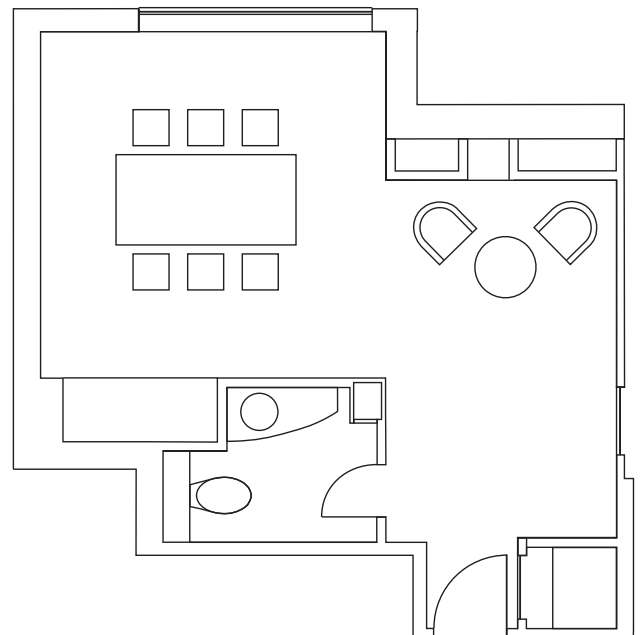
The Met Lounge can accommodate up to 10 guests either as a boardroom or in lounge style. It's a popular room for interviews, press days or as an additional room if you book a larger space.





## The Met Studio

The Met Studio is our smallest space, allowing for intimate boardroom-style meetings of up to six delegates, or 10 guests at a drinks reception. It can also be used as a one-on-one private room for the interconnecting Met Boardroom.





White Room

## Meeting Room Packages

**Daily Delegate Rate: From £95 per person**  
**Includes VAT and service charge**

- Room hire from 8.00am to 5.30pm
- Three coffee breaks
- Lunch
- Inbuilt AV
- Two flipcharts
- Wi-Fi
- IT butler
- Meeting stationery
- Beverages

**Mindful Daily Delegate Rate: From £110 per person**  
**Includes VAT and service charge**

- Ginger and manuka honey tea on arrival
- Individual platters of dried fruits and nuts
- Room hire from 8.00am to 5.30pm
- Three healthy coffee breaks
- Healthful buffet lunch
- Inbuilt AV
- Two flipcharts
- Wi-Fi
- IT butler
- Meeting stationery

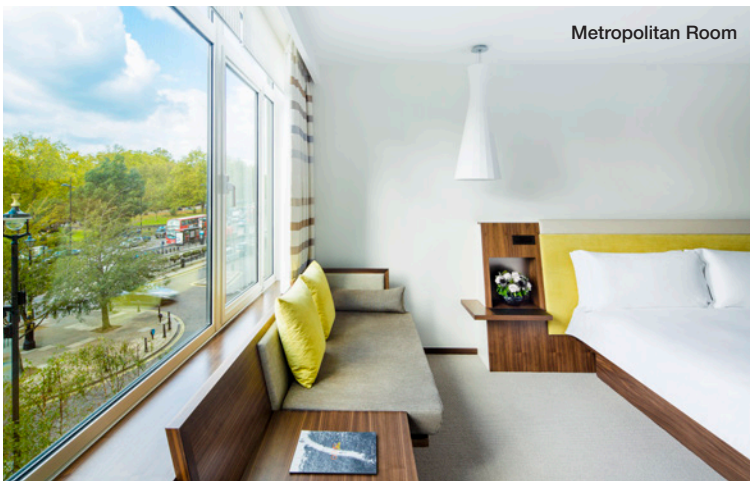


## Capacity Chart

	Rounds	Boardroom	Cabaret	U-shape	Hollow Square	Classroom	Theatre	Reception	Lounge
<b>White Room</b>	60	28/30	35	24	34	28	80	80	20
<b>Met Space</b>	30	28/30	30	-	-	-	40	50	20
<b>Met Boardroom</b>	10	14	-	-	-	-	20	15	8
<b>Met Lounge</b>	10	12	-	-	-	-	10	10	8
<b>Met Studio</b>	10	6	-	-	-	-	-	10	6



Park Suite



Metropolitan Room



Junior Park Suite

## Accommodation

**45 Deluxe City Rooms** (29sq m): Long mirrors adorn the walls, making the already large space expand around you. The king-size beds seem to float above the light tones of the carpets. Admire the view through large windows as you relax into a curved armchair. There is a large work area in a pale walnut, and a modern bathroom in cream stone tiles.

**35 Metropolitan City Rooms** (33sq m): Metropolitan City Rooms have been designed with tranquillity in mind. Remote-controlled blinds and silk curtains keep the bustling city at bay. A well-appointed living area with ample desk space, bespoke king-size beds and generous bathrooms add to the sense of contemporary comfort.

**30 Metropolitan Park Rooms** (33sq m): Many of our signature rooms offer excellent views across Hyde Park – with an abundance of light hard to match at other hotels. Many of the rooms have balconies, framed with silk curtains patterned with stripes of burnt umber, silver and gold. Beds are available as king-size or twins.

**9 Junior Park Suites** (35sq m): Through floor-to-ceiling windows, London floods into these suites, bringing light to the natural hues and textures of sycamore timbers. A contemporary B&B Italia sofa is your spot to unwind, alone or with family, in front of the 60” plasma Loewe television.

**3 Junior City Suites** (44sq m): Views of Mayfair and London’s landmarks permeate into these loft-like suites, providing a sense of the character that comes from our Park Lane location. An open-plan suite, boasting cantilevered walnut desks and our intuitive media hub, makes city living easy. Generous bathrooms feature dual basins.

**7 City Suites** (44sq m): Our City Suites give you the feel of your own apartment within the heart of the city. With a separate bedroom and living room, these large spaces have an L-shaped sofa as your relaxation area, and space for dining. Bathrooms feature both a walk-in shower and separate bath tub.

**8 Park Suites** (47sq m): Step into a spacious and stylishly appointed one-bedroom suite, where bedroom and living areas are separated by a fret-cut patterned door. Floor-to-ceiling windows offer a dynamic panorama of London’s lush Hyde Park. A large comfortable sofa begs you to relax amidst the rooms gentle, earthy tones, while bathrooms feature creamy stone interiors.



COMO Suite



COMO Suite



COMO Suite

## Accommodation

**1 Metropolitan Suite** (53sq m): Situated on the ninth floor, the Metropolitan Suite is the perfect confluence between luxury apartment living and five-star hotel service. In the bedroom, the king-size bed is off-set by the velvet barley yellow headboard and bronzed mirrors at either side. Large TV's feature in both rooms. This spacious suite features a dining table for four, while a Hampton sofa by Morgan encourages relaxation. A traditional tambour cleverly shrouds space for luggage storage. A separate guest washroom is located near the entrance to the suite.

**1 Penthouse Suite** (77sq m): Expansive windows open up this space to the glorious parkland beside the hotel. The separate bedroom benefits from extensive wardrobe space and a dressing area. An inviting lounge area features a COMO coffee table and Hampton sofa by Morgan, as well as cord-upholstered armchairs to sink into late in the day. A dining room and separate guest bathroom are also featured, giving you a true sense of a private residence within the hotel.

The Penthouse Suite has the ability to interconnect with a Junior Park Suite and / or a Metropolitan City Room, creating a two- or three-bedroom suite.

**1 COMO Suite** (110sq m): The COMO Suite is the pinnacle of COMO living, reflecting the clean, pared-back style that is our hallmark. The wall of windows, commanding spectacular views of London's Hyde Park, is dressed with both a continuous voile drape as well as blinds. The dining space, with room for six people, is complemented by a pantry featuring a sink, dishwasher, oven, induction hob and fridge. The relaxation zone features Hampton sofas by Morgan and a wall-mounted 60" television. The bespoke king-size bed, draped with Egyptian cotton, is the centrepiece of a grand bedroom.



## Nobu

Nobu at COMO Metropolitan London is an essential experience for any serious gourmand, founded by Nobuyuki Matsuhisa and presided over by Executive Chef Mark Edwards. In this highly energised space with Park Lane views, guests can enjoy a lunch or dinner of Japanese-Peruvian cuisine for the modern generation. Specialities include black cod with miso, sashimi salad with Matsuhisa soy sauce dressing, Hamachi sashimi with jalapeños, and squid 'pasta' with light garlic sauce.





## COMO Shambhala Urban Escape

COMO Metropolitan London offers a full range of specialist facials, massages and body treatments at COMO Shambhala Urban Escape, ensuring guest wellbeing.

Health and fitness group activities include yoga classes and wellness talks, as well as mini head and shoulder massages at your event.



COMO Metropolitan London is positioned on a quiet street just off one of the most significant thoroughfares in the capital – Park Lane. The hotel opens up onto the landmark Hyde Park Corner. Bond Street, Belgravia, Knightsbridge and Piccadilly are within easy walking distance.





---

## CITY HOTELS

### COMO METROPOLITAN BANGKOK

27 South Sathorn Road,  
Tungmahamek, Sathorn,  
Bangkok 10120, Thailand  
T. +66 2 625 3333  
E. res.met.bkk@comohotels.com  
W.comohotels.com/  
metropolitanbangkok

### COMO METROPOLITAN LONDON

Old Park Lane, London W1K 1LB, UK  
T. +44 20 7447 1000  
E. met.lon@comohotels.com  
W.comohotels.com/  
metropolitanlondon

### COMO METROPOLITAN MIAMI BEACH

2445 Collins Avenue, Miami Beach,  
Florida 33140, USA  
T. +1 305 695 3600  
(US Toll Free: +1 855 316 2666)  
E. met.mia@comohotels.com  
W.comohotels.com/  
metropolitanmiamibeach

### COMO THE HALKIN, LONDON

Halkin Street, London SW1X 7DJ, UK  
T. +44 20 7333 1000  
E. thehalkin@comohotels.com  
W.comohotels.com/thehalkin

### COMO THE TREASURY, PERTH AU

1 Cathedral Avenue, Perth,  
WA 6000, Australia  
T. +61 8 6168 7888  
E. como.thetreasury@comohotels.com  
W.comohotels.com/en/thetreasury

---

---

## RESORTS

### COMO CASTELLO DEL NERO, TUSCANY

Strada Spicciano, 7, 50028, Barberino  
Tavarnelle, Tuscany, Italy  
E. castelodelnero@comohotels.com  
T. +39 055 806470  
W.comohotels.com/castelodelnero

### COMO COCOA ISLAND, MALDIVES

Makunufushi, South Malé Atoll,  
Maldives  
T. +960 664 1818  
E. cocoaisland@comohotels.com  
W.comohotels.com/cocoaisland

### COMO MAALIFUSHI, MALDIVES

Thaa Atoll, Maldives  
T. +960 678 0008  
E. maalifushi@comohotels.com  
W.comohotels.com/maalifushi

### COMO PARROT CAY, TURKS AND CAICOS ISLANDS

PO Box 164 Providenciales,  
Turks and Caicos Islands,  
British West Indies  
T. +1 855 727 7682  
E. parrotcay@comohotels.com  
W.comohotels.com/en/parrotcay

### COMO POINT YAMU, PHUKET

225 Moo 7, Pa Klok, Talang,  
Phuket 83110, Thailand  
T. +66 76 360 100  
E. res.pointyamu@comohotels.com  
W.comohotels.com/en/pointyamu

---

### COMO UMA CANGGU, BALI

Jalan Pantai Batu Mejan,  
Echo Beach, Canggu,  
Badung 80361, Bali, Indonesia  
T. +62 361 602 2228  
E. como.uma.canggu@comohotels.com  
W.comohotels.com/en/umacanggu

### COMO UMA PARO and COMO UMA PUNAKHA

PO Box 222, Paro, Bhutan  
T. +975 8 271 597  
E. res.uma.bhutan@comohotels.com  
W.comohotels.com/en/bhutan

### COMO UMA UBUD, BALI

Jalan Raya Sanggingan Banjar  
Lungsiakan, Kedewatan, Ubud,  
Gianyar 80571, Bali, Indonesia  
T. +62 361 972 448  
E. uma.ubud@comohotels.com  
W.comohotels.com/umaubud

---



COMO SHAMBHALA

### COMO SHAMBHALA ESTATE

Banjar Begawan, Desa Melinggih  
Kelod Payangan, Gianyar 80571,  
Bali, Indonesia  
T. +62 361 978 888  
E. CSestate@comohotels.com  
W.comohotels.com/  
comoshambhalaestate

---