



C O W D R A Y



Set in the heart of Cowdray's 16,000-acre Estate in West Sussex, Cowdray House is a stunning English country house available for exclusive use which offers guests a unique and unforgettable experience.

Tel: 01730 814522

houseevents@cowdray.co.uk

www.cowdray.co.uk



W E L C O M E

Cowdray House is a stylish private country retreat where guests can enjoy a unique experience in a warm and welcoming setting. Every stay is bespoke, each event is expertly planned and the need of every guest is taken into consideration. The team are on hand to ensure your stay at Cowdray House exceeds expectations with great care taken to understand what is important to every visit.

Whether it's a celebration, wedding, corporate event or a rare opportunity to unwind and relax with friends and family, time spent at Cowdray House, will be time where precious memories are created.

With 22 bedrooms and luxurious ensuite bathrooms, elegant reception rooms and far-reaching views over the South Downs, Cowdray House is an exclusive-use venue located at the heart of the family-owned Estate. Set in 110 acres of landscaped gardens overlooking the South Downs National Park, it offers guests complete privacy in beautiful surroundings.

AN ENGLISH COUNTRY ESTATE

Cowdray House was built by the seventh Earl of Egmont in the mid-1870s on the site of an old hunting lodge. The keeper's lodge was pulled down and a much larger building was constructed with a mixture of Tudor, Arts and Crafts, Georgian and Elizabethan architecture.

In 1909 the esteemed businessman Sir Weetman Dickinson Pearson purchased the Estate from the Earl of Egmont. He was made Baron Cowdray in 1910 and in 1917 became the First Viscount Cowdray. Cowdray has subsequently passed through four generations and has evolved into a modern, progressive rural estate which is world-renowned as the Home of British Polo. Windows and door frames of property belonging to Cowdray are painted a distinctive 'Cowdray yellow' and are a striking feature throughout Midhurst and the surrounding villages. The colour was chosen due to the first Viscount Cowdray's connection to the Liberal Party.

Although Cowdray House is no longer a family home, it retains a relaxed and warm feel with portraits of the four Viscounts and their families adorning the walls of Buck Hall. Guests at the house can enjoy everything that the House and the wider Estate has to offer.





SPECTACULAR SETTING

Private, exclusive, and beautiful: from the moment you sweep up the picturesque drive lined with sweet chestnut trees, there is no doubt that you have arrived at a truly spectacular location.

The grounds were landscaped by Lancelot 'Capability' Brown in the eighteenth century and are set in rolling English countryside. Walking past the manicured croquet lawn, a path leads on to the Ladies Lake with a picturesque bridge and a jetty. Explore the Woodland Walk past Pear Pond, so named because of its shape, and onto the Wellingtonia Avenue which comprises of majestic cedar trees planted in 1742.

The carefully mown paths wind their way through the grounds with extensive walks leading from the House. The landscape changes with the seasons and is equally stunning at all times of the year.



EXCEPTIONAL SPACES

The big oak doors to Cowdray House open into a grand entrance hall, which leads into the impressive Buck Hall. With its double vaulted ceiling, stained glass windows and minstrel's gallery, Buck Hall is at the centre of the House. It is a versatile space which can accommodate large scale celebrations as well as more intimate events.

There is a grand wood-panelled Dining Room and the stylish and elegantly decorated Library and Drawing Room open onto the front terrace, with views overlooking the South Downs, where drinks can be enjoyed in the summer months. The Morning Room is a warm and welcoming space with large sofas and a fireplace, perfect to sit and relax.



Buck Hall and the Drawing Room (bottom left)





Left page: Diamond (top), Golden Topaz (bottom left) and Pearl (bottom right)
 Right page: (from left to right) En suite bathrooms for the Diamond, Golden Topaz and Star Ruby



BEAUTIFUL BEDROOMS

Every one of the 22 bedrooms and ensuite bathrooms at Cowdray House has its own unique style combined with a warm and welcoming yet sumptuous country feel. Whether you want to look out over the South Downs towards the historic Cowdray Ruins, relax in a large mosaic bath, find the hidden bathroom behind the wood panelling, or require a more family orientated suite or an easily accessible bedroom, there are rooms to suit all.

Every room is named after a precious stone and include the master Diamond Suite with its incredible bathroom, dressing room and terrace, the oak-panelled Golden Topaz room with its magnificent four poster bed and the elegant and sophisticated Pearl Room.

STAY AND ENJOY

There is much to do at the House. From a game of tennis on the court near the grand cedar tree, to a splash about on a summer's day in the impressive outdoor swimming pool. Guests can also enjoy the tranquil indoor pool, a competitive game of croquet on the front lawn or enjoy the use of the full-size billiards table. There is even an indoor ten pin bowling alley, perfect for a fun after dinner activity.

These activities are exclusive to the House and are there to enjoy as and when you choose.





PRIVATE STAYS

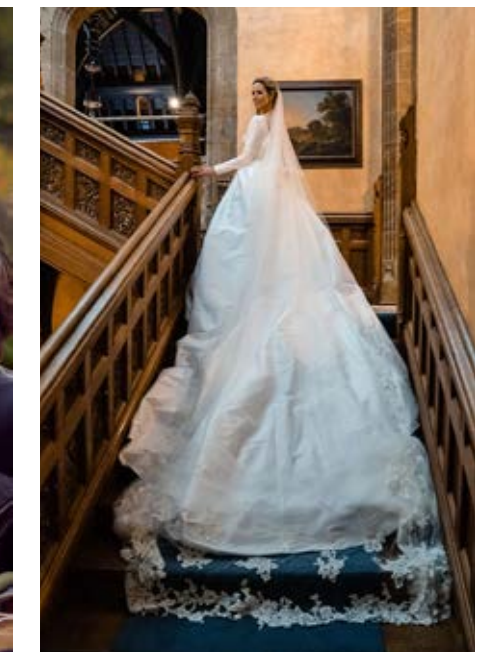
Time is precious and at Cowdray, guests can relax, unwind and enjoy the company of friends and family while everything else is taken care of. The House is available on an exclusive-use basis and a bespoke stay can be created to ensure that you have the best possible experience. Yours to enjoy as if it were you own – our House chefs, butlers, nannies and concierges can all be arranged, and the operational team are always on hand to help. There is even a private helicopter landing pad in the grounds.

Cowdray House is also a perfect place to stay while enjoying celebrated local events such as the British Open Polo Championship for the Cowdray Gold Cup and Goodwood's Revival, Festival of Speed and Glorious Goodwood.

CELEBRATIONS AND EVENTS

Who wouldn't want to receive an invite to a party at Cowdray House? The house is the perfect venue for celebrations, weddings, anniversaries and birthdays. From drinks on the terrace, a banquet in Buck Hall to a wedding ceremony on the front lawn: the house adapts to suit your needs.

Working with approved top-quality suppliers, the team at the House can create a bespoke plan that suits the needs of your guests whatever the season. Each event is unique, and while the celebration may only be a day or a weekend, the memories last forever.





C O R P O R A T E

Product launches, press days, photo shoots, staff wellness retreats, team building exercises and global inter-company gatherings to name a few, Cowdray House suits business needs perfectly. With technology opening up the world, the well-equipped yet classic surroundings of Cowdray House are the perfect place to connect with people globally through conference calls and video meetings.

The House provides a private, quiet and tranquil setting, yet it is only an hour from London. It is also easily accessible from Guildford and Chichester and has strong rail links from the nearby towns of Haslemere and Petersfield.

Boardrooms can be set up, activities arranged, food and drink taken care of, and at the end of the day accommodation is on site. Leaving time for the focus to be on business.



ACTIVITIES

Horse riding, clay pigeon shooting, foraging for wild foods, archery, hedgerow management, beekeeping, cocktail master classes, private Pilates classes. You name it, our events team can organise it. With 40 different activities to choose from, there need never be a dull moment. Even quirky experiences such as duck and sheep herding, or axe throwing can be arranged.

There are also traditional sporting activities available on the wider Estate such as golf, shooting, fishing, polo lessons and even a Bear Grylls Survival Academy.





ALSO AT COWDRAY

The award-winning Farm Shop and Café is within easy reach, as is Cowdray Golf with its 18-hole Championship course. Cowdray Ruins, a historic Tudor mansion which partially burnt down in 1793, can be seen from the grounds of Cowdray House. Prior to the fire, the house, which was one of England's most important early Tudor houses, had been visited by Henry VIII and Elizabeth I.

Guests at Cowdray House can also enjoy access to high-octane polo games played through-out the summer months with the highlight being the British Open Polo Championship for the Cowdray Gold Cup.

There is also extensive accommodation available on the Estate including the newly built environmentally friendly Cowdray Tree House Retreats, luxury country houses to rent, holiday cottages and bed and breakfast accommodation.

Located near the market town of Midhurst, West Sussex. The House is approximately 1 hour 20 minutes by car from London, with easy access to the A3, A272 and the M27.

AIRPORTS

London Gatwick > 37 miles
London Heathrow > 47 miles

TRAINS

Haslemere > 9 miles
Haslemere to London Waterloo > 49 minutes
Pulborough > 11 miles
Pulborough to London Victoria > 70 minutes

Cowdray House
Cowdray Park
Midhurst
West Sussex
GU29 0AY

www.cowdray.co.uk

Tel: 01730 814522

houseevents@cowdray.co.uk

[@cowdrayestate](https://www.instagram.com/cowdrayestate)



