



# Pitch.

Corporate Events

# Three London Clubs



SOHO



CITY



WHARF



# Pitch Venues



Truly multifunctional spaces, Pitch venues are **perfect for events of all sizes**. From 20 people meetings to 300 person company-wide parties, our sophisticated venues provide a canvas to design and host your event.

Attendees can **play games, socialise and dance** the night away in complete privacy whilst enjoying our amazing food and expertly curated drinks selection.

At Pitch we organise a variety of events...



# Company Events

Team Social Events



Company Parties



Employee Rewards





# Exclusive Event Hire

With **multiple beautiful venues** to choose from, a selection of add on activities and entertainment for all levels, tempting cocktails, delicious food and much more, Pitch is a sophisticated competitive socialising experience like no other.

If you're looking to organise an event requiring half venue or exclusive hire, enquire now and the team will be happy to help design your night.





“Amazing experience with the team at Pitch Soho, we had our Corporate Christmas Party there and the venue was brilliant. Sophie was particularly helpful during the planning process and was around all night to ensure the evening ran smoothly - couldn't recommend them enough!”

Lara Laws

# Corporate Events

Client Events



Product Showcase



Inclusive Golf Days



# Activities

We have a range of games available, that are all perfect for mixed ability groups to enjoy together.

Booking full or half venue hire gives the ability to **add on activities** such as:

- Roulette
- Nintendo Switch multiplayer on big 3m screen
- Streets of Neon
- VR headset battles
- Dance mats

Other arcade games hired on request.







# The Professional Touch

Take advantage of our expert **PGA Professional golf coaches** when you book your next event. We offer group coaching options which are great for those new to the game or players looking to improve.

Make your event truly memorable by having our **professional photographer** and videographer capture your special moments.

Or looking for that special touch? Why not include some cool golf swag to take away with you?



# Food & Drink

Designed exclusively for Pitch, our 18 Greens Menu includes Asian infused dishes which have been curated by the ex-head chef of the Ivy Steve Tonkin. When mixed with delicious cocktails, Japanese lager and a very modern wine list, your guests will be spoilt for choice.





“Our whole night was really fun and the desserts were brilliant, lots of unique touches, and such a classy venue, highly recommend it.”

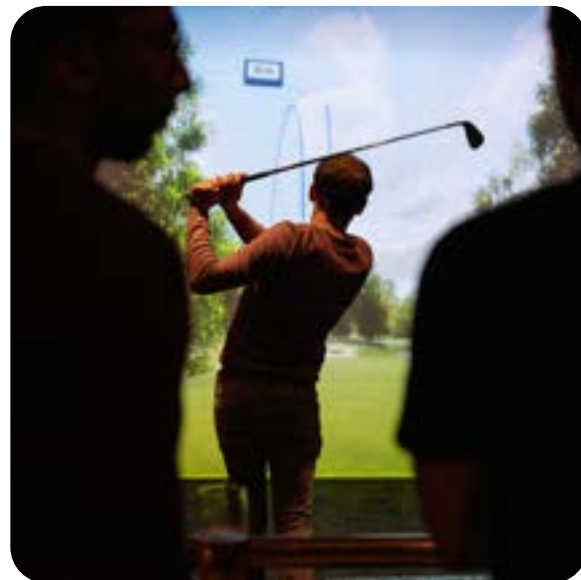
Saria, Collective London

“Fantastic venue, we had our Christmas party here of all ages and abilities and it worked perfectly. Staff were amazing. Will definitely be visiting again.”

Lynn Mills

# Soho Events Packages

Perfect for those regular team rewards and smaller groups, our events packages cater for all. Prices are inclusive of VAT. For venue hire get in touch and we'll create a bespoke package with you.



## PAR

Two hours of games  
Two house drinks  
No food  
Reservable area

From:  
**£35pp**



## BIRDIE

Two hours of games  
Two house drinks  
One '18 Greens' dish  
Reservable area

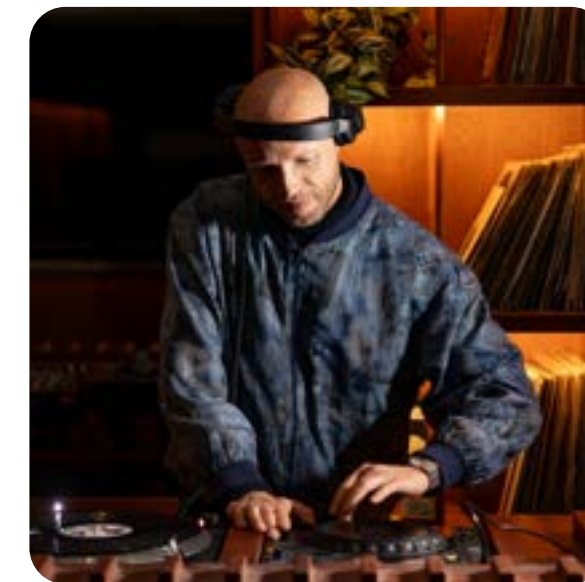
From:  
**£45pp**



## EAGLE

Two hours of games  
Two premium drinks  
Two '18 Greens' dishes  
Reservable area

From:  
**£55pp**



## ALBATROSS

Three hours of games  
Three premium drinks  
Three '18 Greens' dishes  
Reservable area

From:  
**£79pp**



## ACE

Four hours of games  
Four premium drinks  
Three '18 Greens' dishes  
Reservable area

From:  
**£95pp**

# City Events Packages

Perfect for those regular team rewards and smaller groups, our events packages cater for all. Prices are inclusive of VAT. For venue hire get in touch and we'll create a bespoke package with you.



## PAR

Two hours of games  
Two house drinks  
No food  
Reservable area  
Use of mezzanine

From:  
**£35pp**



## BIRDIE

Two hours of games  
Two house drinks  
Half pizza  
Reservable area  
Use of mezzanine

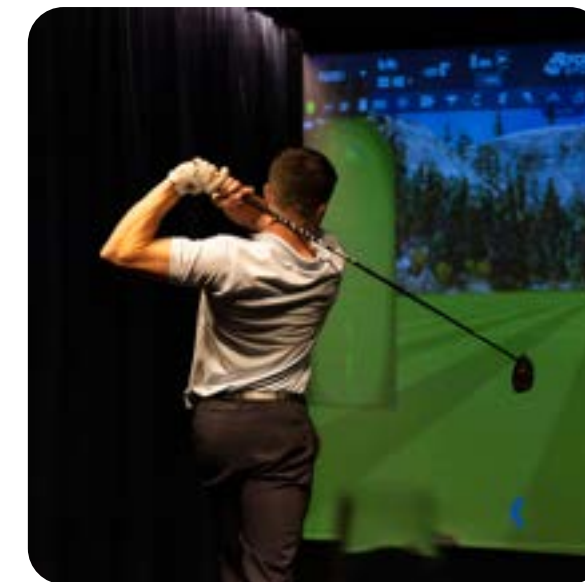
From:  
**£45pp**



## EAGLE

Two hours of games  
Two premium drinks  
Whole pizza  
Reservable area  
Use of mezzanine

From:  
**£55pp**



## ALBATROSS

Three hours of games  
Three premium drinks  
Whole pizza  
Reservable area  
Use of mezzanine

From:  
**£79pp**

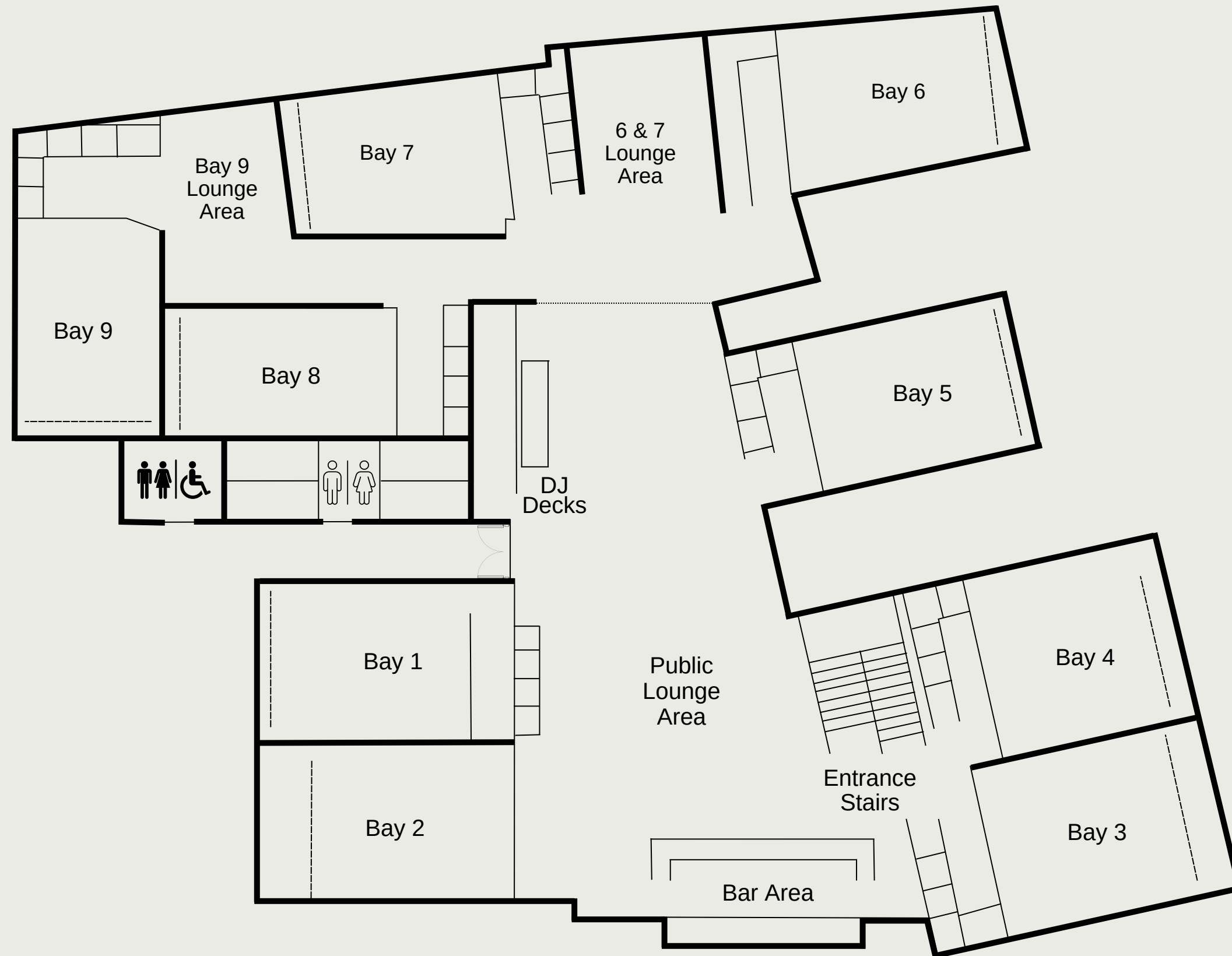


## ACE

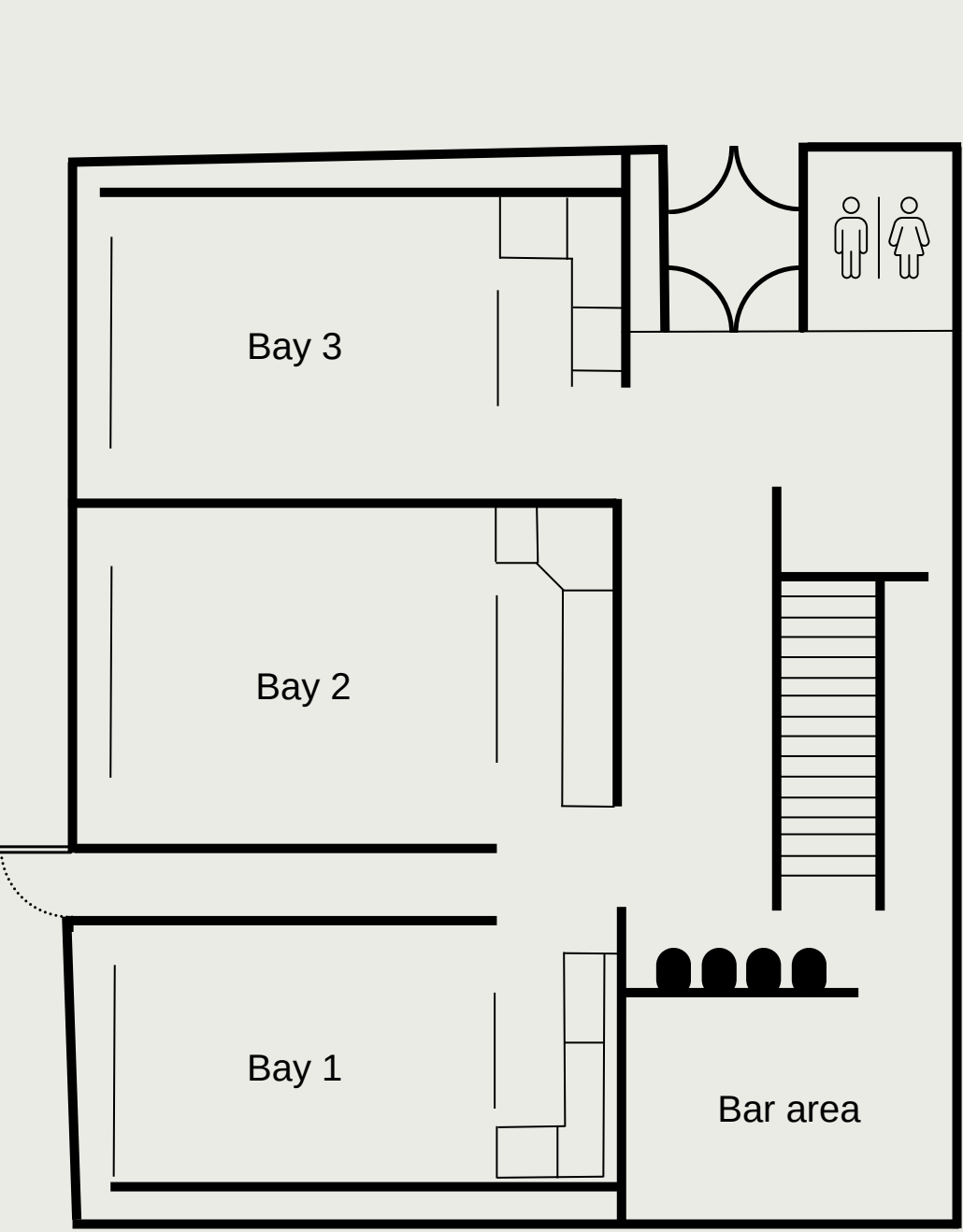
Four hours of games  
Four premium drinks  
Whole pizza & nibbles  
Reservable area  
Use of mezzanine

From:  
**£95pp**

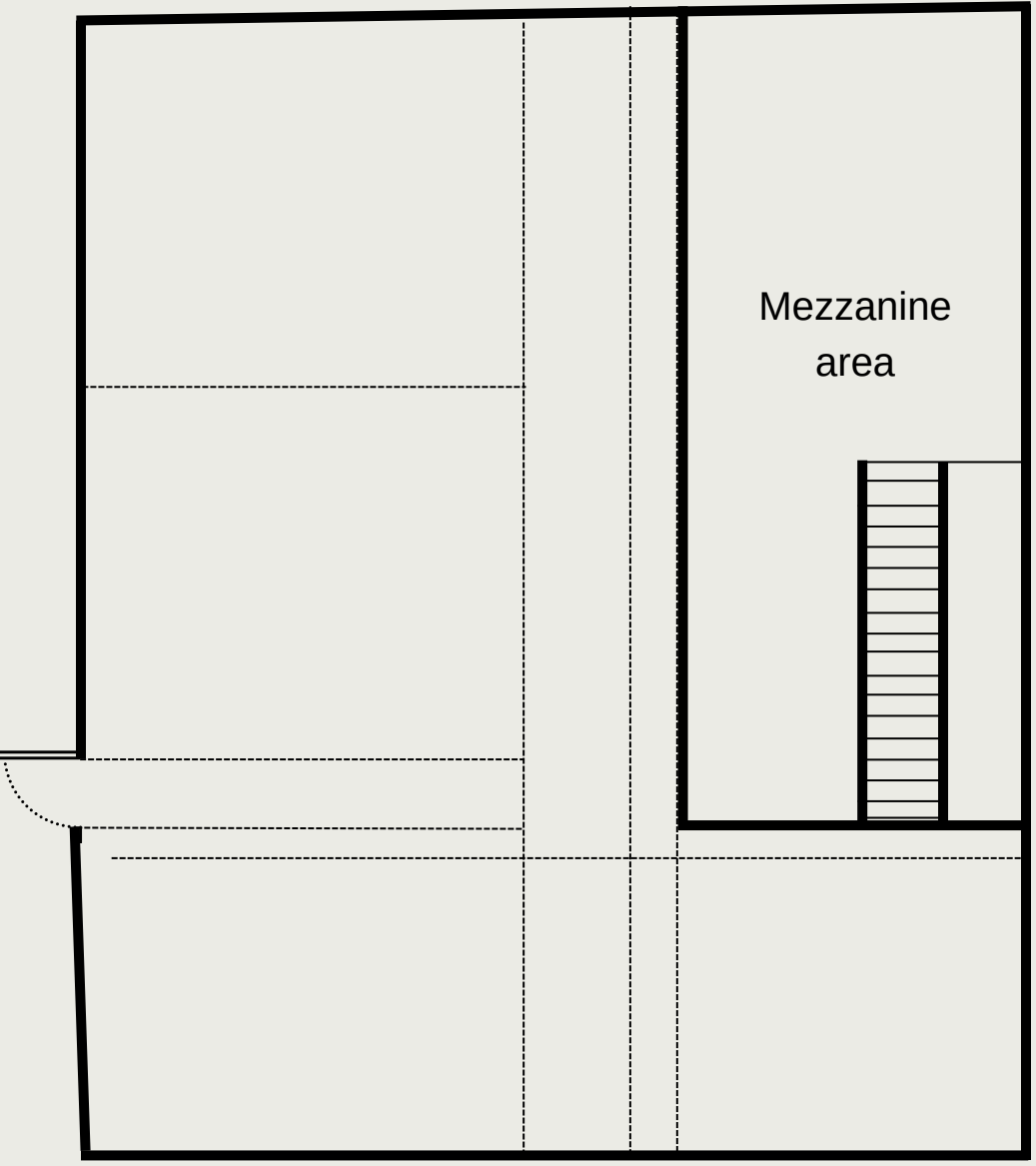
# Soho Floorplan



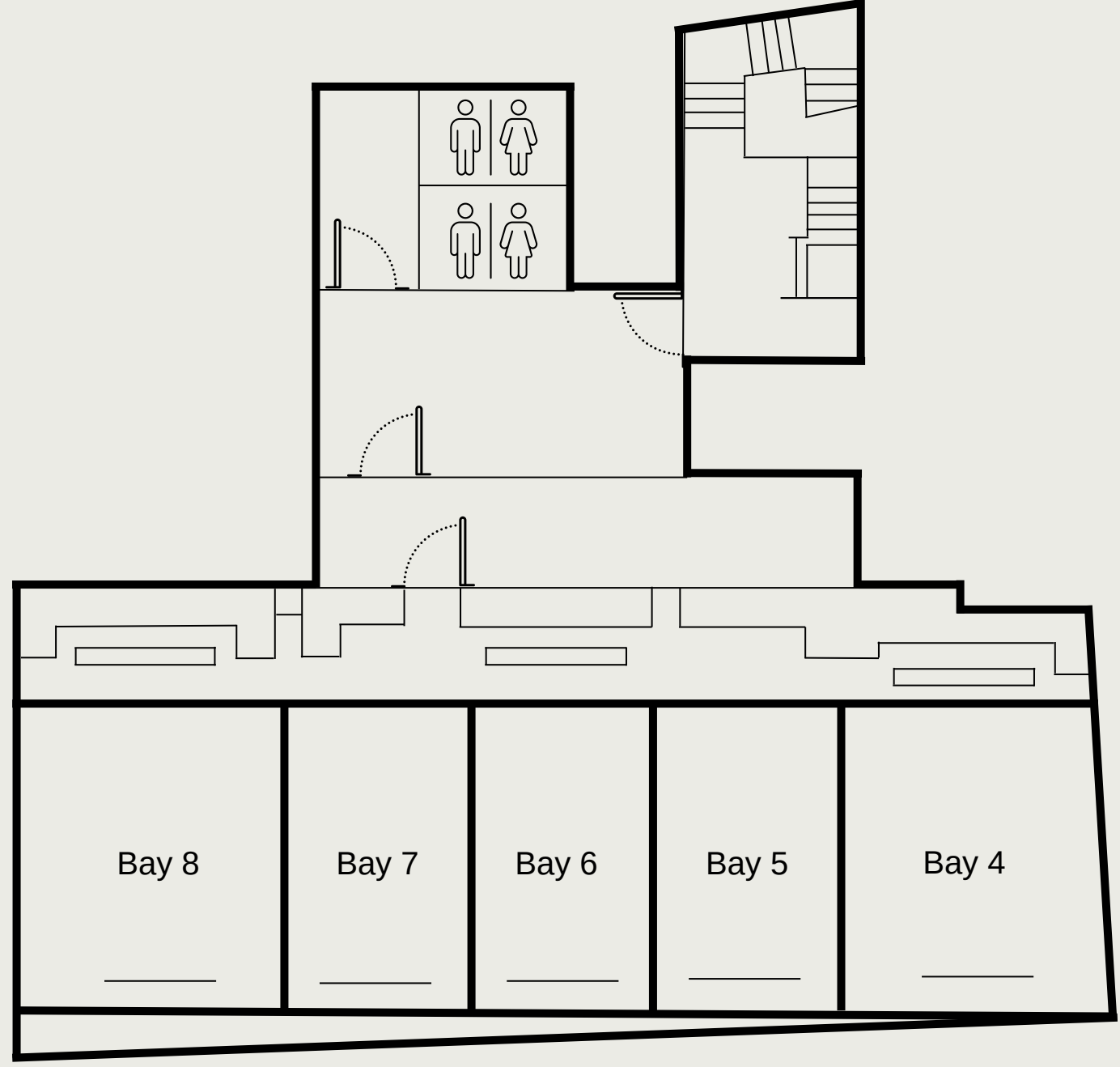
# City Floorplan



Ground Floor

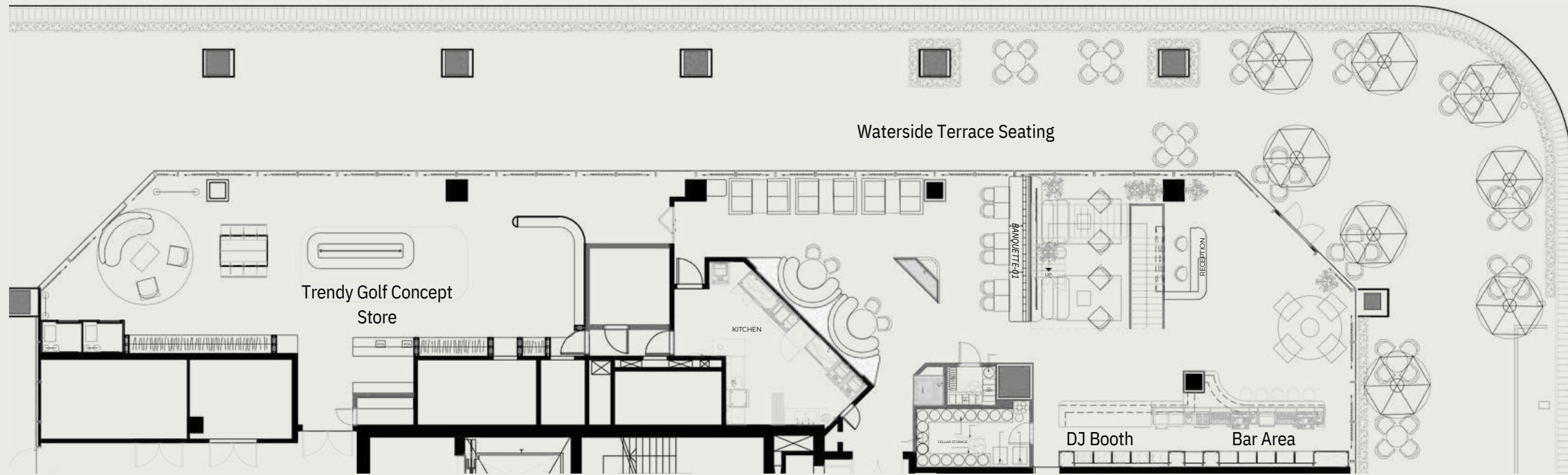


Upper Floor



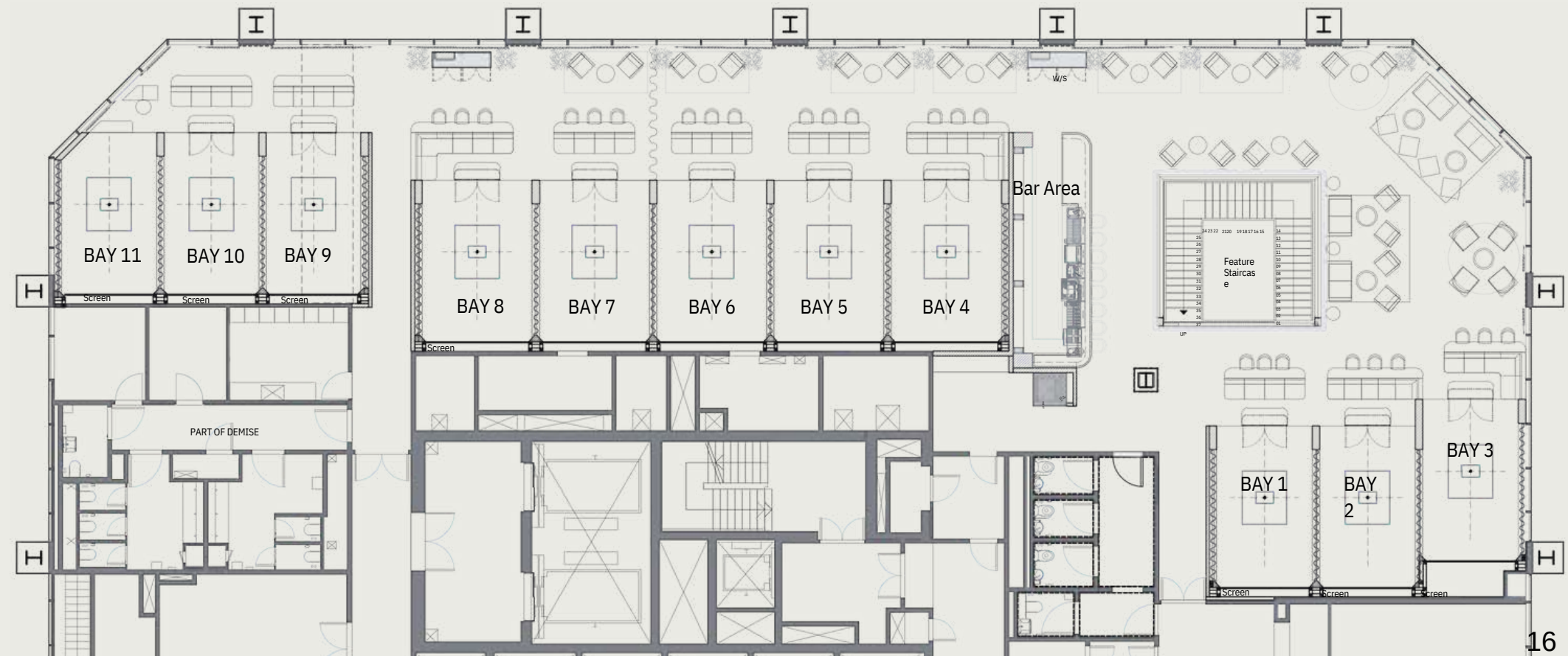
Lower Floor

# Wharf Floorplan



Ground Floor

Promenade Floor





# Pitch.

## Contact Us

For any enquiries, please contact Sophie Brand

[events@pitchldn.co.uk](mailto:events@pitchldn.co.uk)

[+44 \(0\) 7480 576 575](tel:+44207480576575)

## Soho City Canary

12 Meard St,  
London  
W1F 0EQ

62 Bishopsgate, TBC  
London  
EC2N 4AW





Pitch.

Thank You

**GRENHON**  
Real Estate  
Commercial & Residential  
Sales & Leasing  
Property Management  
Investment Services

wework

Pitch.

ROYAL  
MANIONS

wework