

# Corporate Events Venue

THE OLD HALL  
*Edy*



# One Venue For All Your Needs.

---

From creative away days to secure exclusive meeting rooms and everything in between, our picturesque house and grounds make for the perfect event.

**With on-site parking, high speed Wi-Fi, accommodation & catering, equipment for hire, and a team of dedicated Event Managers, your event will go off without a hitch.**



Brand & Company  
Launch Events



Board & Conference  
Meetings



Team Building Weekends



Film & Photography  
Destination



Team & Awards Parties

## THE ORANGERY

A fantastic, open space with panoramic views over our gardens and Ely Cathedral.

This multi-functional space was opened in Summer 2022, and boasts floor to ceiling glass, a fireplace, and multiple garden terraces.

The Orangery is perfect throughout the day, transforming from a warm and collaborative environment to a glorious space for an evening event at night.



Standing  
Capacity  
120



Seated  
Capacity  
80



Boardroom  
Style  
N/A



Cabaret  
Style  
64



Theatre  
Style  
120

Minimum of 40 delegates



# THE MARQUEE

Perfect for large scale celebratory events.

The Marquee has a grand feeling, with immense views of our grounds and stunning interiors.

This permanent marquee boasts floor to ceiling glass, a fully-equipped bar, and an adjoining 'secret' dance floor with starlit ceilings and a stage.



---

	Standing Capacity 250		Seated Capacity 170		Boardroom Style N/A
	Cabaret Style 100		Theatre Style 200		

---

*Minimum of 60 delegates*

## THE LAKES ROOM

This multi-functional space has incredible views over our lakes and grounds.

This room is best suited for smaller events, or can be used as a supporting meeting room for a larger event.

Links to the Orangery and The House Bar.



Standing  
Capacity  
30



Seated  
Capacity  
30



Boardroom  
Style  
16



Cabaret  
Style  
N/A



Theatre  
Style  
N/A



*Minimum of 10 delegates*

## THE SITTING ROOM

The Sitting Room provides a very warm welcome and great comfort.

With a calming and cosy setting, The Sitting Room is ideal for long meetings or private working lunches.

Boasting a large fire place, antiques and classic English Country Design, this room is simply stunning.



Standing  
Capacity  
20



Seated  
Capacity  
10



Boardroom  
Style  
10



Cabaret  
Style  
N/A



Theatre  
Style  
30

Minimum of 4 delegates

## THE GROUNDS

Our stunning venue is set within ten acres of grounds.

We are true stewards of the land we keep, and we are fortunate to have both natural spaces with abundant wildlife, as well as manicured gardens and an array of outdoor entertaining spaces, including:

### **The Topiary Courtyard**

Ideal for al fresco dining or a cocktail reception

### **The Cathedral Terrace**

Great for unwinding and taking in views of Ely Cathedral

### **Gardens**

A fantastic open setting for team building exercises, with three ornamental lakes which are yours to roam

---

Complimentary Use



## CATERING

**We have a fantastic team of chefs who will work with you to create your perfect menu.**

Possibilities are endless, from three course dining experiences to a healthy working lunch, we can cater for all your requirements and are happy to create bespoke menus.

Here are some examples from Breakfast through to Dinner, from savoury to sweet:

### **Breakfast**

A range from Smoked Salmon Poppy Seed Bagels to Sweet Waffles and Pancakes

### **Snacks**

Think a boost of energy from Lemon & Blueberry Muffins, Chive and Sour Cream Pretzels to Honey Granola Cereal Bars

### **Lunch**

Could be a selection from Club Sandwiches, Pissaladière Tart to Potato Gnocchi with Spinach, Pine Nuts & Gorgonzola Cream followed by Pear & Almond Tart

### **Dinner**

Can also be offered on a bespoke menu, from Roasted Bone Marrow with Port Braised Beef Cheek to Lemon Meringue Pie





## DRINKS

**We have an incredible array of drinks for all events.**

For example:

Tea & Coffee with Homemade Snacks

Bottles of Sparkling and Still Water

Health Shots & Juices

Fine Wines, Cocktails and Champagne

**From drinks receptions, coffee bars or cocktail stations, we can help create the perfect event for your guests.**



## ACCOMMODATION

**We have 16 luxury bedrooms on-site.**

All of our bedrooms have their own charm and unique character, with modern furnishings including:

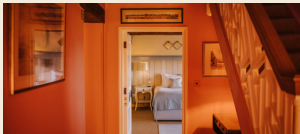
The White Company Toiletries  
Dyson Pure Hot & Cool Purifier Fan  
Nespresso Capsule Machine  
Tea Making Station  
Flat-Screen Television  
5 Star Quality Bed Linen

A complimentary hot breakfast is included with all of our rooms.

Our rooms can be exclusive to your party on your event date should you wish. \*subject to availability

---

Double Rooms from £185



## DAY DELEGATE RATE

### The Orangery

Included within the Day Delegate Rate:

Room Hire  
Morning Homemade Snack with Tea & Coffee  
2 Course Fork Buffet Lunch  
Afternoon Snack with Tea & Coffee

**Delegate Rate - £85.00 inc VAT**

*Minimum of 40 delegates*

### The Marquee

Included within the Day Delegate Rate:

Room Hire  
Morning Homemade Snack with Tea & Coffee  
2 Course Fork Buffet Lunch  
Afternoon Snack with Tea & Coffee

**Delegate Rate - £95.00 inc VAT**

*Minimum of 60 delegates*

### The Sitting Room

Included within this Half-Day Delegate Rate:

Room Hire  
Morning Snack with Tea & Coffee  
Sandwich Lunch  
Afternoon Snack with Tea & Coffee

**Delegate Rate - £65.00 inc VAT**

*Minimum of 4 delegates*

### The Lakes Room

Included within this Half-Day Delegate Rate:

Room Hire  
Morning Snack with Tea & Coffee  
Sandwich Lunch  
Afternoon Snack with Tea & Coffee

**Delegate Rate - £75.00 inc VAT**

*Minimum of 10 delegates*

## VENUE SUMMARY

	THE ORANGERY	THE MARQUEE	THE LAKES ROOM	THE SITTING ROOM
DIMENSIONS	15.3 x 7.7m	15 x 15m	7.1 x 4.9m	6.8 x 4.9m
STANDING CAPACITY	120	250	30	20
SEATED CAPACITY	80	170	30	10
BOARDROOM	N/A	N/A	16	10
CABARET STYLE	64	100	N/A	N/A
THEATRE STYLE	120	200	N/A	30

---

### Corporate Package Equipment to hire

Projector and Screen  
Smart TV 58" with Stand

*All prices stated are inclusive of VAT where applicable and are subject to change.*