

EXHIBITIONS

NEWMARKET RACECOURSE



◆◆◆◆
THE JOCKEY CLUB
NEWMARKET



WELCOME TO NEWMARKET RACECOURSE

The Rowley Mile, located in the heart of the East of England is an impressive venue with a stunning backdrop of the Suffolk/Cambridgeshire countryside.

The picturesque site offers modern indoor facilities, flexible rooms, stylish suites, spacious exhibition halls, beautiful outdoor spaces and ample free parking. Just a few miles from Cambridge, the Rowley Mile benefits from swift and easy access thanks to its proximity to the A11 and A14.

EXHIBITIONS

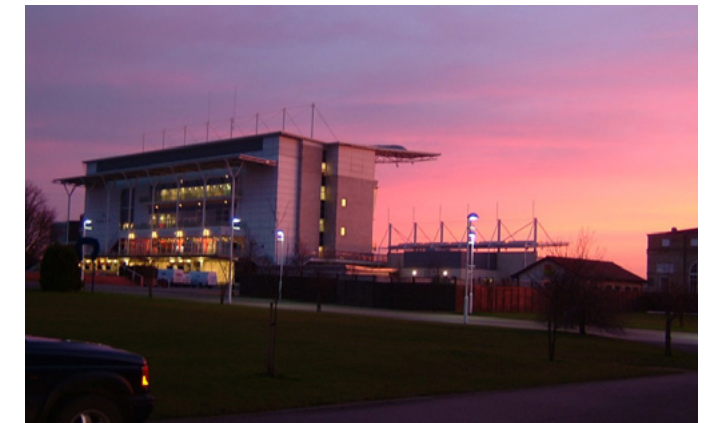
We have a wide range of facilities and services on offer in order for you to put on a successful show.

Offering the versatility of first class, fully-

equipped exhibition halls alongside acres of outdoor space Newmarket's Rowley Mile Racecourse provides the perfect place to hold your exhibition, product launch or tradeshow in Suffolk.

Flexibility is one of the Rowley Mile's greatest features and our events team are experts in helping exhibition organisers maximise the venue's vast potential, which includes four main exhibition halls and almost unlimited free parking. Our main exhibition hall benefits from full vehicular access making it an ideal choice for indoor product launches and exhibitions with large equipment.

Outside there are almost limitless possibilities, with the large hard-standing area in front of the Grandstand and extensive lawns and areas of hard-standing behind it.



WHY CHOOSE NEWMARKET RACECOURSE

LOCATION / ACCESSIBILITY

- ◆ Easily accessible from neighbouring Cambridge
- ◆ Stunning views across the surrounding countryside including the chance to see horses having their daily training and exercise.
- ◆ Free car parking spaces for exhibitors and visitors
- ◆ Excellent venue access for exhibitors direct into the hall for build up and break down
- ◆ Affluent catchment area perfect for consumer led exhibitions and retail events

VENUE SPACE

- ◆ Over 30 wonderful spaces & suites available to hire, perfect for every occasion, large or small
- ◆ There is also the opportunity to take over the whole venue, linking the different areas and stands to both expand and enhance your event.

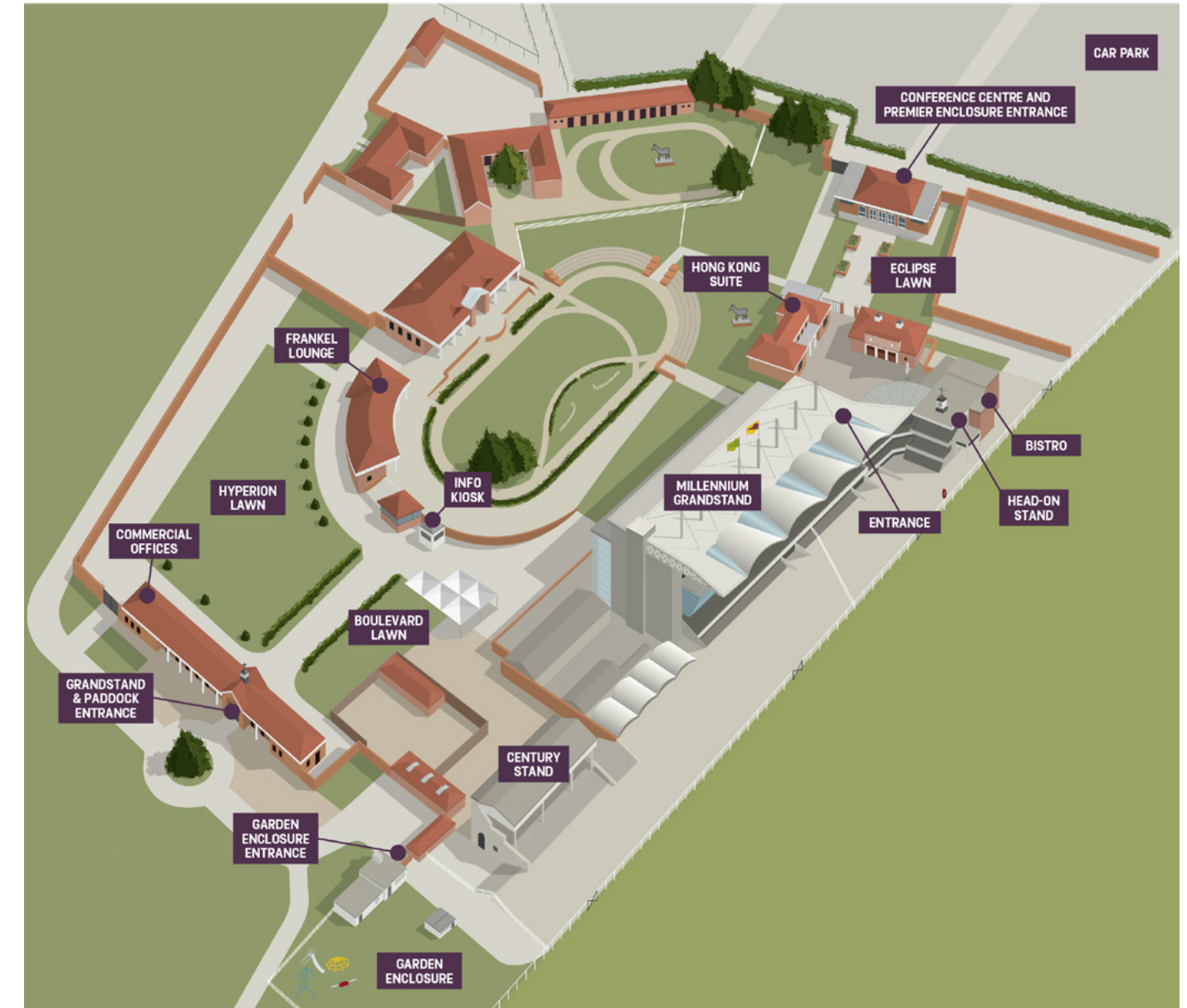
SUPPORT

- ◆ Dedicated and experienced event managers assist event organisers in planning and implementing their event

- ◆ The marketing team provide invaluable marketing support to event organisers should they wish to utilise it
- ◆ The catering team are on hand to provide award-winning cuisine upon request
- ◆ AV support
- ◆ Members of the HBAA, BPCO, AIM accredited

BRAND / EXISTING PORTFOLIO

- ◆ Newmarket Racecourse is an established brand that is well recognised and provides excellent association opportunities for events looking to increase profile
- ◆ Newmarket Racecourse has a proven track record for delivering a variety of complex events to both Trade and Consumer audiences alike

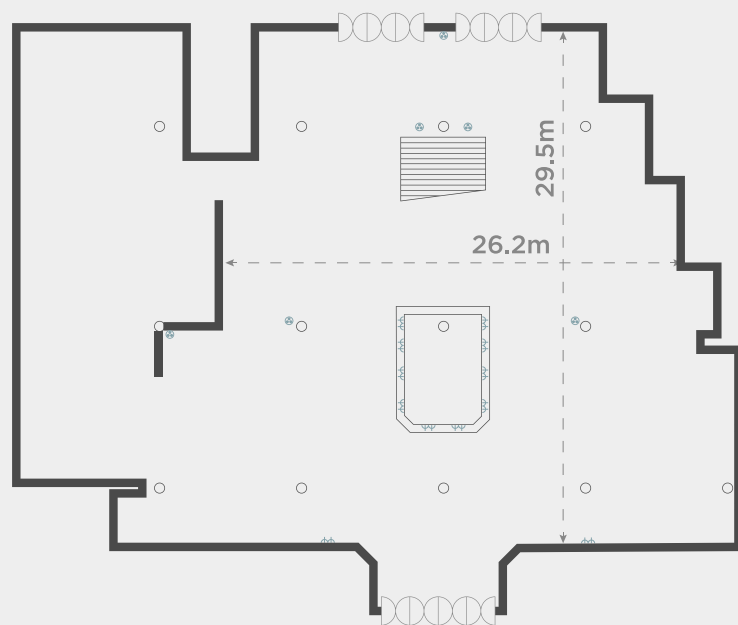


FACILITIES & FLOORPLANS

MILLENNIUM GRANDSTAND

EXHIBITION HALL 1

685 square metres of marble floored exhibition space that can accommodate up to sixty 2x2 exhibition stands and has vehicular access for car displays. The Devils Dyke restaurant located within Hall 1 can be used as extra exhibition space or a separate catering area for your event.



	THEATRE	-
	BOARDROOM	-
	CABARET	-
	CLASSROOM	-
	DINNER	520
	DINNER DANCE*	520
	U SHAPE	-
	RECEPTION	500

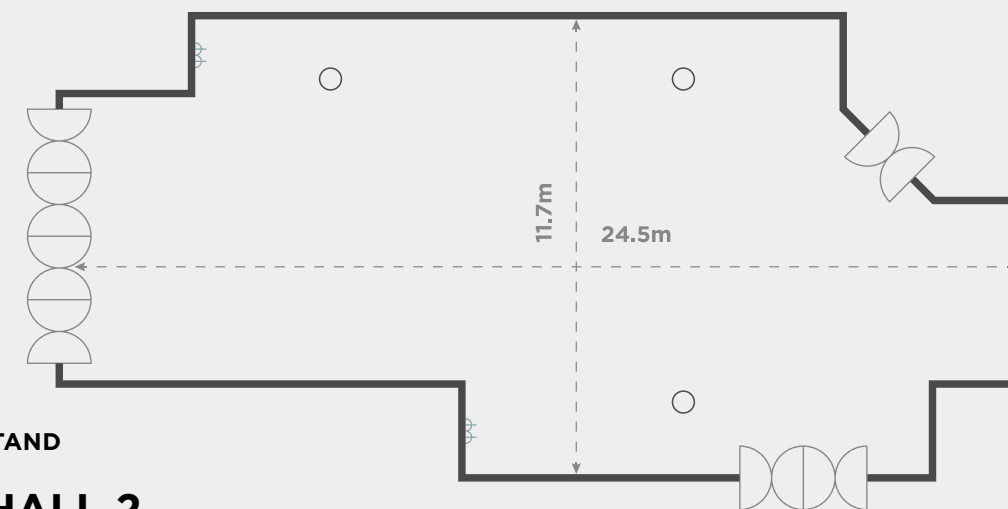
*ONLY IF USED WITH EXHIBITION HALL 3

FACILITIES & FLOORPLANS

MILLENNIUM GRANDSTAND

EXHIBITION HALL 2

With over 300 square metres of fully carpeted space, Exhibition Hall 2 is ideal for exhibitions, meetings or as a large breakout room for up to 100 delegates.



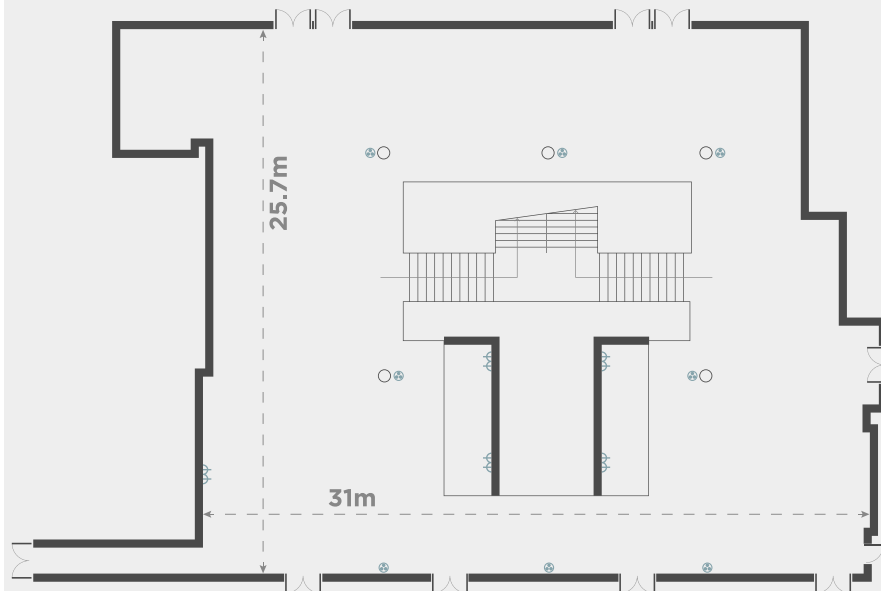
	THEATRE	100
	BOARDROOM	46
	CABARET	80
	CLASSROOM	50
	DINNER	100
	DINNER DANCE	80
	U SHAPE	38
	RECEPTION	150

FACILITIES & FLOORPLANS

MILLENNIUM GRANDSTAND

EXHIBITION HALL 3

Located on the 1st floor, this dual aspect area is light and airy with a sweeping central staircase and views over the Parade Ring and racecourse. It adjoins Exhibition Hall 4 via the lift lobby and works as an extension of exhibition/ retail space, but also as a registration or networking space.



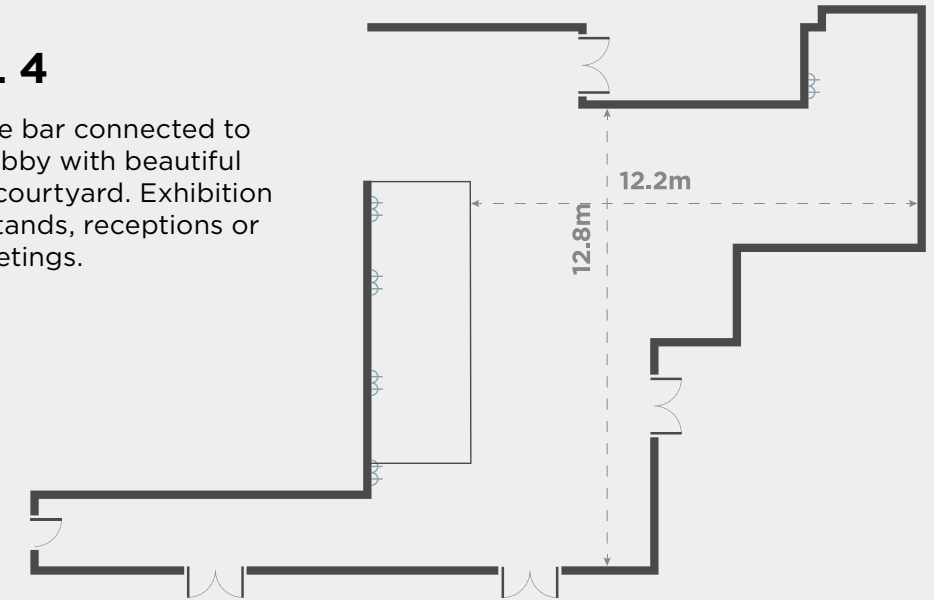
	THEATRE	150
	BOARDROOM	-
	CABARET	-
	CLASSROOM	-
	DINNER	200
	DINNER DANCE	-
	U SHAPE	-
	RECEPTION	500

FACILITIES & FLOORPLANS

MILLENNIUM GRANDSTAND

EXHIBITION HALL 4

A beautifully furnished lounge bar connected to Exhibition Hall 3 via the lift lobby with beautiful views of the racecourse and courtyard. Exhibition Hall 4 is ideal for exhibition stands, receptions or as a refreshment area for meetings.



	THEATRE	40
	BOARDROOM	-
	CABARET	24
	CLASSROOM	-
	DINNER	-
	DINNER DANCE	-
	U SHAPE	-
	RECEPTION	50



ADDITIONAL INFORMATION

THE HIRE CHARGES INCLUDE THE FOLLOWING SERVICES AND FACILITIES:

- ◆ Dedicated event management and account management to support you throughout your booking
- ◆ Standard hall heating and lighting
- ◆ Provision of agreed catering areas
- ◆ An abundance of free parking for visitors, organisers, exhibitors and contractors
- ◆ Wifi
- ◆ Power available for exhibitors if required

WHAT ELSE WE OFFER:

- ◆ Event stewarding
- ◆ Car park attendants
- ◆ Cleaning
- ◆ Cloakroom staff
- ◆ Furniture
- ◆ First aid cover
- ◆ Insurance
- ◆ Catering
- ◆ Overnight security from last night of build-up to last open morning of event (18.00-08.00 hrs)



HOW TO FIND US

Newmarket is located North East of London just 45 miles from the M25 / M11 junction and 12 miles from Cambridge. The Rowley Mile Racecourse and Conference Centre is easy to find and well signposted from the main roads.

IF TRAVELLING FROM LONDON

M11 exit at Junction 9 for the A11

Exit at A1304 for Newmarket

Travel along the A1304 for approximately 4 miles

The Rowley Mile Racecourse and Conference Centre is straight over the first roundabout, following the road signposted, Newmarket town centre, after travelling for just over one mile, take the first turning on the left.

IF TRAVELLING FROM CAMBRIDGE

A14 towards Newmarket

Exit at the A1303 Stow-cum-Quy turning

Travel along the A1303 for approximately 6 miles

The Rowley Mile Racecourse and Conference Centre is straight over the first roundabout, following the road signposted, Newmarket town centre, after travelling for just over one mile, take the first turning on the left.

IF TRAVELLING FROM NORWICH VIA A11

From the Barton Mills roundabout follow A11 for 9 miles

Exit the A11 at the A1304 slip road

Travel along the A1304 for approximately 2 miles.

At the first roundabout (with the clock tower) go straight over and travel along Newmarket's high street. For the Rowley Mile Racecourse and Conference Centre take a right hand turn when signposted to do so.

IF TRAVELLING FROM IPSWICH VIA A14

Follow A14 for Newmarket

Exit at the B1506

Travel along the B1506 for approximately 4 miles

At the traffic signals, bear left onto the A1304 and travel along the A1304 for approximately 1 mile. At the first roundabout (with the clock tower) go straight over and travel along Newmarket's high street. For the Rowley Mile Racecourse and Conference Centre take a right hand turn when signposted to do so.

PUBLIC TRANSPORT

BY RAIL | NEWMARKET STATION

Approximately 5 minutes taxi ride away.

For information on train operators and times phone National Rail Enquiries on 0845 7484950

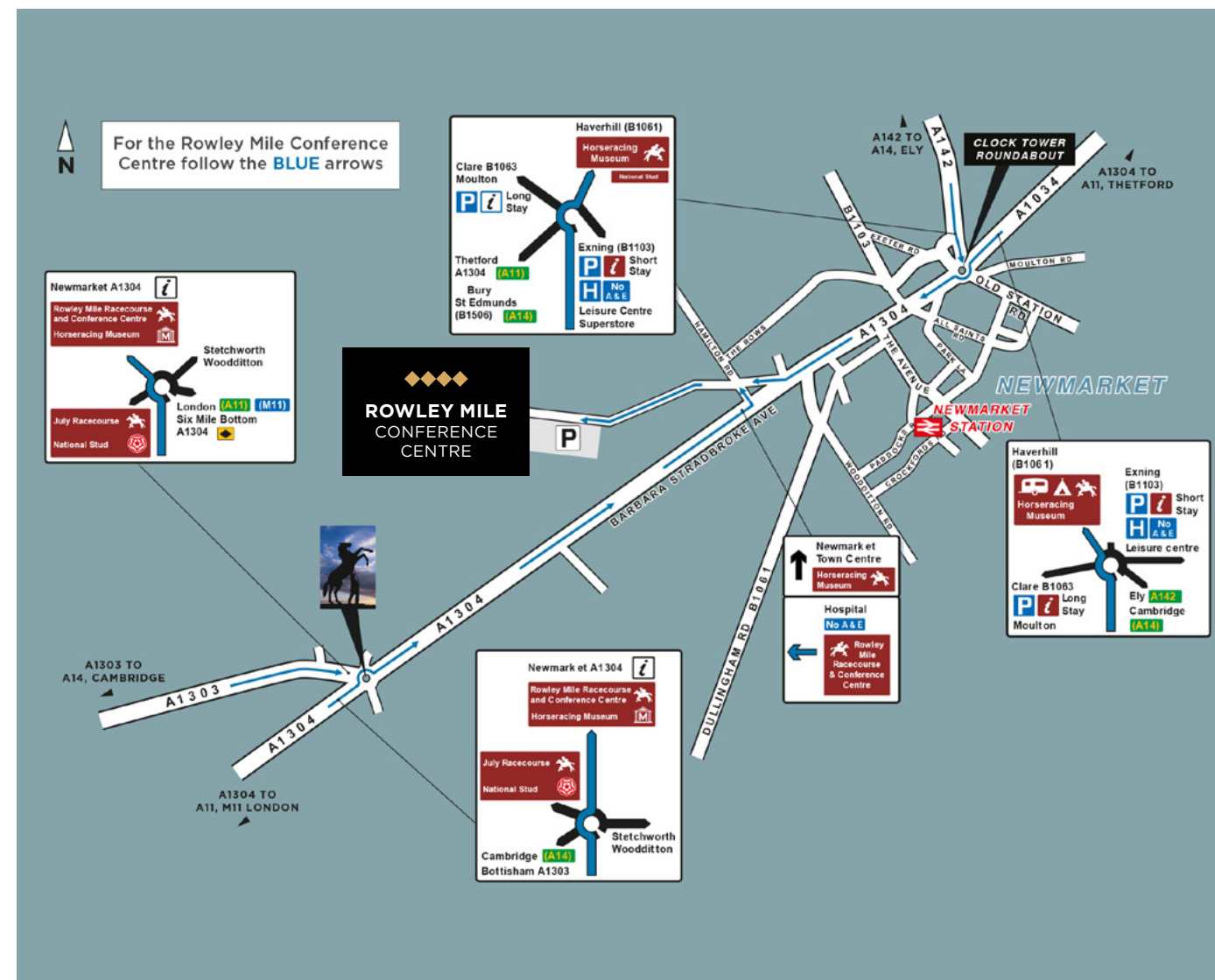
BY AIR | STANSTED AIRPORT

Approximately 45 minutes taxi ride away.

Alternatively use the No.747 Jet link coach service from Stansted to Newmarket.

HOW TO FIND US

ROWLEY MILE CONFERENCE CENTRE | Rowley Mile Racecourse, Newmarket, Suffolk CB8 0TF



FOR MORE INFORMATION PLEASE CONTACT



THE JOCKEY CLUB
NEWMARKET



Tel: **01638 675300**

Email **newmarket.events@thejockeyclub.co.uk**

www.thejockeyclub.co.uk/newmarket