

ਗੁਰਮਤਿ ਕੀ ਭਾਵਨਾ ਸਦਾ ਸਾਡੀ ਮਨੋ-ਮੁਹਿਤ ਰਹੇ।

ELEVATE YOUR EVENT

At Gilgamesh, we reimagine the art of hosting extraordinary events. Our venue is a masterpiece of opulent aesthetics and intricate details, setting the stage for a wide range of occasions.

Spanning three intimate floors, Gilgamesh is the ideal choice for both grand receptions and intimate gatherings.

Whether you're organising a corporate function or a personal celebration, every corner of our space is meticulously designed to leave a lasting impact and create unforgettable memories.

ਗੁਰਮਤਿ ਕੀ ਭਾਵਨਾ ਸਦਾ ਸਾਡੀ ਮਨੋ-ਮੁਹਿਤ ਰਹੇ।



EVENT OPTIONS

Our dedicated team is committed to meeting your every need and event requirement, ensuring that your guests enjoy an exceptional and unforgettable experience.

We offer two broad options for Events at Gilgamesh London.

020 7494 4444 | www.gilgamesh.com | events@gilgamesh.com

LARGE GROUP DINING

For groups of 10 or more, we offer seating in a combination of booths and tables in the restaurant across three floors on a non-exclusive basis. Our booths come in various sizes, with the largest single booth accommodating up to 10 guests subject to availability. Larger group bookings can be accommodated on a combination of booths next to each other.

We offer Sharing Set Menus starting at £65 per person including Vegan & Vegetarian options. If you have individual dietary and allergen requirements for guests we have alternative options on request.

You may also order quantities of additional dishes from our Ala Carte menu to be placed in the centre of each tables and shared.

Order drinks from a comprehensive Cocktail and Wine List while dining or pre-order for the table to begin. No minimum spend is required.

020 7494 4444 | www.gilgamesh.com | events@gilgamesh.com



020 7494 4444 | www.gilgamesh.com | events@gilgamesh.com

EXCLUSIVE EVENT AREAS

Our venue, a masterpiece of opulent aesthetics and intricate details, offers a stunning backdrop, redefining exceptional events. With three intimate floors, it's perfect for grand receptions and intimate gatherings.

We offer three exclusive options for private use, suitable for both dining and receptions. From an Entire Venue Takeover or either of our unique areas, Zion, or Babylon individually, each offering its own unique ambiance and character. Exclusive event areas are subject to minimum spends which are made up of the food and beverage consumption.

Choosing an exclusive area allows for customisation of your event, including Dining or Canape menu selection alongside tailoring any Welcome Drinks or Event Bar with selections from an extensive Cocktail and Wine List. Each exclusive area also features its own bar, lighting, and sound system. There is no venue hire.

020 7494 4444 | www.gilgamesh.com | events@gilgamesh.com

ZION

A UTOPIAN OASIS

ZION | UPPER MEZZANINE

Zion, meaning Utopia, is situated on the upper level. Ascend to an area of lush exotic greenery, reminiscent of the Hanging Gardens of Babylon, adding an extra layer of enchantment to your visit. The surrounding foliage and atmosphere create a truly magical sanctuary.

ZION | UPPER MEZZANINE

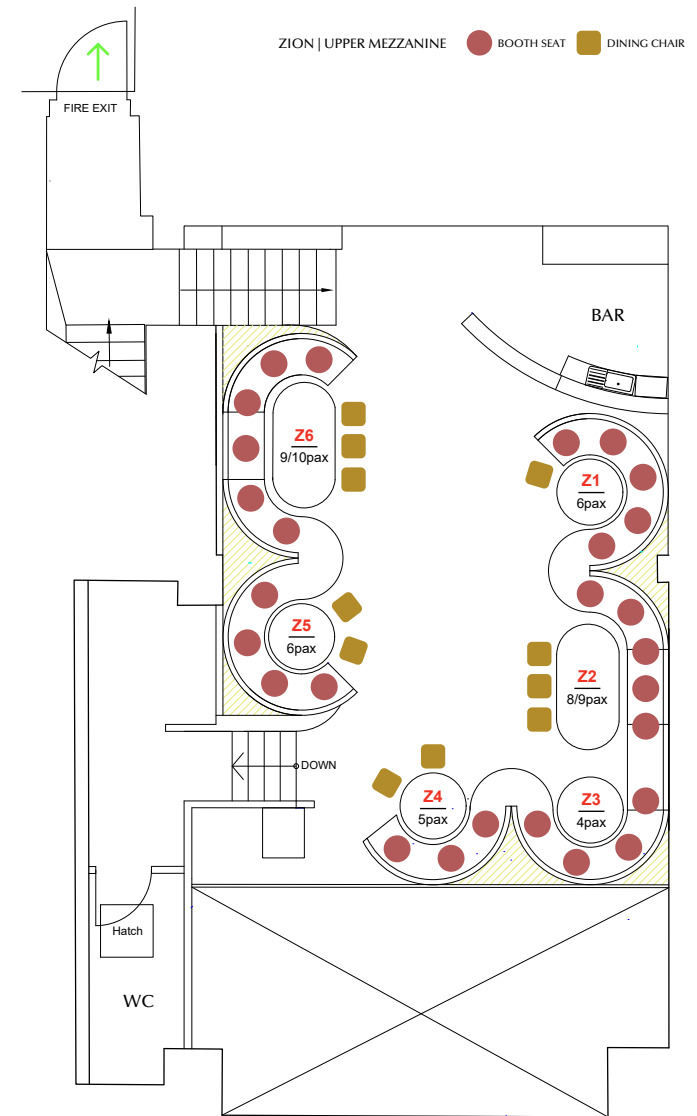
CAPACITY

Seated Dining: 40 guests (+/-)

BOOTH DINING ON SET MENUS

Canape + Drinks Reception: 70 guests (+/-)

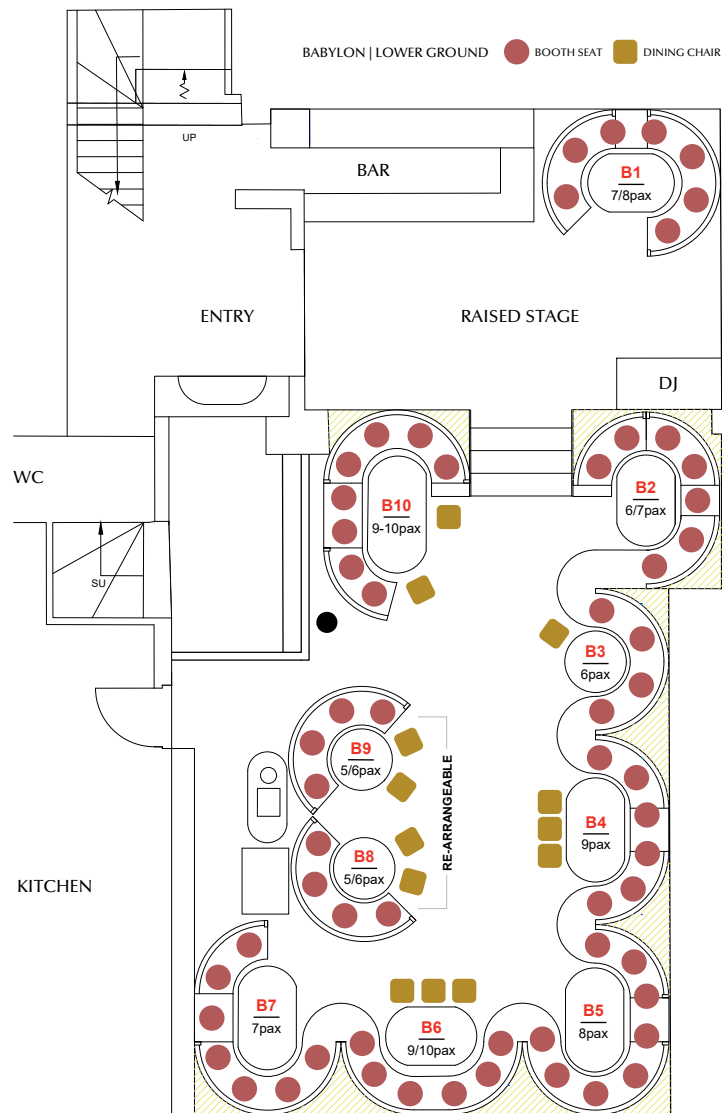
STANDING WITH OCCASIONAL BOOTH SEATING



BABYLON

LOWER GROUND





BABYLON

LUXURIOUS SPLENDOR AWAITS



Descend to Babylon, a City of Paradise adorned with luxurious splendour. Located on the lower ground, your senses will feast on an opulent blend of dark, intimate ambiance and harmonious cuisine. The mood is dark and sensual with intimate lighting setting the stage for wood-carved walls, intricate design, and sumptuous decor. Truly a feast for the eyes.



CAPACITY

Seated Dining: 80 guests (+/-)

BOOTH DINING ON SET MENUS

Canape + Drinks Reception: 100 guests (+/-)

STANDING WITH OCCASIONAL BOOTH SEATING

FULL VENUE TAKEOVER

THE ULTIMATE STATEMENT

Experience the drama of a full venue takeover with our unique setting spread across three distinct areas. In our sumptuous dining spaces, intimate booths blend seamlessly with walls adorned in hand-carved wood and glistening bronze. Every detail is carefully crafted, from textured walls to soft, warm lighting, sumptuous velvets, tarnished metals, mirrored surfaces, and exquisite Gold Chinoiserie. An exclusive full venue takeover is across all three distinct areas of Gilgamesh, including the ground floor Lounge Bar.

Experience the drama of a full venue takeover with our unique setting spread across three distinct areas. In our sumptuous dining spaces, intimate booths blend seamlessly with walls adorned in hand-carved wood and glistening bronze. Every detail is carefully crafted, from textured walls to soft, warm lighting, sumptuous velvets, tarnished metals, mirrored surfaces, and exquisite Gold Chinoiserie. An exclusive full venue takeover is across all three distinct areas of Gilgamesh, including the ground floor Lounge Bar.

Experience the drama of a full venue takeover with our unique setting spread across three distinct areas. In our sumptuous dining spaces, intimate booths blend seamlessly with walls adorned in hand-carved wood and glistening bronze. Every detail is carefully crafted, from textured walls to soft, warm lighting, sumptuous velvets, tarnished metals, mirrored surfaces, and exquisite Gold Chinoiserie. An exclusive full venue takeover is across all three distinct areas of Gilgamesh, including the ground floor Lounge Bar.

CAPACITY

Lounge Bar Seated Dining*: 50 guests (+/-)

BOOTH DINING ON SET MENU

Full Venue Seated Dining: 160 guests (+/-)

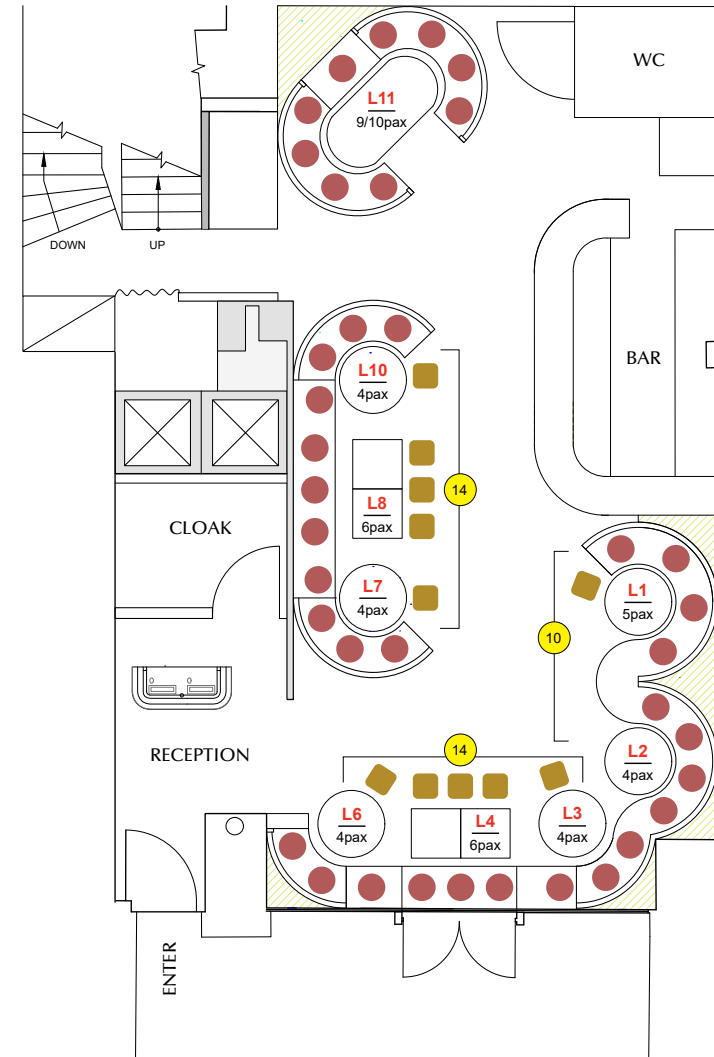
BOOTH DINING ON SET MENU

Canape + Drinks Reception: 250 guests (+/-)

STANDING WITH OCCASIONAL BOOTH SEATING

* Lounge only available with full venue takeover

MAIN BAR LOUNGE | GROUND LEVEL ● BOOTH SEAT ■ DINING CHAIR





ආර්ථික ක්ෂේත්‍රයේ නව තරු ඔබේ ස්වභාවික සුවඳ සහිත ආහාරයක් සඳහා සූදානම් වෙමු.

MENU SELECTION

Our menus are an Eastern gastronomy of delights. A harmonious fusion of flavours that embrace the diverse tastes of China, Japan, and Southeast Asia. Our talented chefs curate each seasonal menu using premium ingredients sourced from our trusted suppliers. Make selections from our specially curated event menus to suit your event requirements.

For dining, we encourage guests to follow the delightful Asian tradition of sharing. Start your culinary journey with a variety of colourful dim sum, sushi, and delectable small sharing plates through to our contemporary signature dishes. For receptions, we offer canape and bowl food selections.

Select any drinks or tailor your bar from our extensive Sommelier hand-picked Wine Selection and a carefully curated Cocktail List.

ආර්ථික ක්ෂේත්‍රයේ නව තරු ඔබේ ස්වභාවික සුවඳ සහිත ආහාරයක් සඳහා සූදානම් වෙමු.



TASTE OF GILGAMESH

£65 SHARED SET MENU

GROUP DINING

Dishes placed in the centre of table to be shared banquet style. For all set menus, shared dishes will be allocated based on number of guests at each table. Always check with your server for specific allergies or intolerances so that we can tailor our offerings to accommodate.



Steamed Edamame, Sea Salt [VG][V]

SHARED STARTERS

Crispy Squid with Salt 'n Pepper, Chilli & Garlic [G]
King Prawn Har Gau [G][N]
Crispy Duck Spring Rolls [G]
Salmon & Avocado Sushi Rolls [G - Soy Sauce on Side]

SHARED MAIN COURSE

Crispy Duck & Watermelon Salad, Cashew Nuts [G][N]
Green Chicken Curry
Ox Cheek Stew [G]

All served with
Steamed Jasmine Rice [VG][V]
Asian Greens [VG][V][G]

INDIVIDUAL DESSERT

Chef's Dessert Selection
Vegan, Dairy and Gluten free options upon request from your Server.



Suitable for [VG] Vegans [V] Vegetarians | Contains [G] Gluten [D] Dairy [N] Nuts



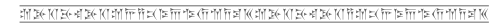


TASTE OF GILGAMESH

£65 SHARED SET MENU | VEGETARIAN & VEGAN

GROUP DINING

Dishes placed in the centre of table to be shared banquet style. For all set menus, shared dishes will be allocated based on number of Vegan & Vegetarian guests or at each table. An individual Vegan or Vegetarian guest will receive the full set menu. Always check with your server for specific allergies or intolerances so that we can tailor our offerings to accommodate.



Steamed Edamame, Sea Salt or Spicy

SHARED STARTERS

Vegetable Spring Roll
Chive & Mushroom Dumpling [N]
Crispy Kale Salad [N]

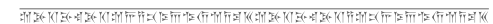
MAIN COURSE

Green Curry with Lychee & Vegetables

All served with
Steamed Jasmine Rice
Asian Greens

DESSERT

Chef's Dessert Selection
Vegan, Dairy and Gluten free options upon request from your Server.



Suitable for [VG] Vegans [V] Vegetarians | Contains [G] Gluten [D] Dairy [N] Nuts



BABYLONIAN BANQUET

£85 SHARED SET MENU

GROUP DINING

Dishes placed in the centre of table to be shared banquet style. For all set menus, shared dishes will be allocated based on number of guests at each table. Always check with your server for specific allergies or intolerances so that we can tailor our offerings to accommodate.

Steamed Edamame, Sea Salt [VG][V]

STARTERS

Popcorn Shrimp in Miso Chipotle Mayo [G]

Wagyu Taco with Pineapple Salsa [G]

Yellowtail Jalapeno

Dim Sum Basket Selection [N][G]*

**Check with your Server for specific intolerances.*

MAIN COURSE

Miso Chilean Seabass [G]

Green Chicken Curry

Ox Cheek Stew [G]

All served with

Steamed Jasmine Rice [V]

Asian Greens [G][D]

DESSERT

Chef's Dessert Selection

Vegan, Dairy and Gluten free options upon request from your Server.





CANAPE MENU

FROM £24 PER HEAD

All at £4 each Minimum 6 Choices per Person

Edamame [V][VG]

Sesame Prawn Spring Rolls [G]

Prawn Har Gau Dumpling [N]

Garlic Chive Mushroom Dumpling [V][VG]

Wagyu Taco with Pineapple Salsa [G][N]

Crispy Duck Spring Rolls [G]

Chicken Siu Mai [G]

Vegetable Spring Rolls [V][VG]

Avocado Sushi Rolls [V][VG][G - Soy Sauce on Side]

Californian Inside Out Sushi Rolls [G - Soy Sauce on Side]

Salmon Avocado Sushi Rolls [G - Soy Sauce on Side]

Suitable for [VG] Vegans [V] Vegetarians | Contains [G] Gluten [D] Dairy [N] Nuts

* Sample Menu. All menus inc. VAT exclude Service Charge at 15%



BOWL FOOD

FROM £7 each



- Crispy Squid with Salt 'n Pepper [G]
- Duck & Watermelon with Cashew Nuts and Sweet Fish Sauce [G][N]
- Fillet of Beef on Chive Mash with Sweet Soy Glaze [G][D]
- Crispy Chilli Tofu & Yellow Bean Sauce, Ong Choi [G]
- Vegetarian Singapore Noodles [G][V][VG]
- Asian Fish & Chips
- Gilgamesh Rice (Prawn, Crab) [G]
- Vegetable Fried Rice [V][VG]
- Green Chicken Curry
- Green Vegetable & Lychee Curry [V][VG]
- Kale, Crispy Tofu Salad [V][VG]





EVENT BAR

We can tailor any Event Bar to your requirements including Welcome Drinks, Standard House Bar or an Open Cash Bar all based on consumption. Choose from from an extensive Cocktail and Wine list. House drink guideline prices are listed.

HOUSE DRINKS



COCKTAILS	From £14
WINE	From £32
SPARKLING	From £38
CHAMPAGNE	From £90
BEER BOTTLE [330ml]	From £6
SPIRIT [50ml]	From £12
BOTTLED SPIRITS	From £180



** REFER TO FULL WINE & COCKTAIL LIST FOR TAILORED SELCTIONS **



KEY EVENT INFORMATION

በገጽ 1 ላይ የተገለጹትን አገልግሎቶች እና የቅጂውን አጠቃላይ ዝርዝር ይመልከቱ።

ADDRESS

4a Upper St Martin's Lane
Covent Garden
London WC2H 9NY
+44 203 340 7922 [option 2]
events@gilgameshlondon.co.uk

TRAVEL

Nearest Tubes:
Covent Garden (Piccadilly Line)
5 min walk (250m)

Leicester Square (Northern Line)
2 min walk (100m)

PARKING

On Street Metered Parking

Q-Park Covent Garden
34-35 Bedfordbury
London WC2N 4HX
6min walk (400m)

NCP Car Park Covent Garden
Parker Mews
London WC2B 5NT
4min walk (300m)

TIMINGS & ACCESS

Open	7 Days
Daytime	From 12:00pm
Evenings	From 17:00
Late License	2:00am

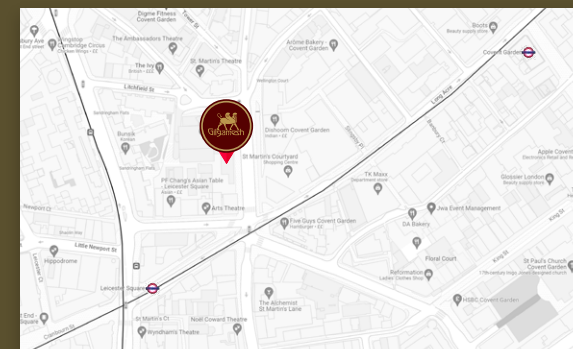
በገጽ 1 ላይ የተገለጹትን አገልግሎቶች እና የቅጂውን አጠቃላይ ዝርዝር ይመልከቱ።

AUDIO VISUAL & SOUND

Each exclusive area also features its own lighting and sound system. Please note non-amplified live music is permitted through our inbuilt Sound system. Background music is included as standard. Play your own music through the sound system or bring a DJ at with a £200 fee for our Sound Technician to ensure integration. Alternatively, request one of our in-house DJ's at an additional cost of £400. Both options require a damage waiver signed with additional deposit.

FOOD ALLERGEN & INTOLERANCES DISCLAIMER

Please inform us of any allergies or intolerances. Some ingredients we use may not be listed on our menu. Gilgamesh's menu is a sharing concept, so cross-contamination of ingredients is possible. Detailed information on the fourteen legal allergens is available on request, however, we are unable to provide information on other allergens.



በገጽ 1 ላይ የተገለጹትን አገልግሎቶች እና የቅጂውን አጠቃላይ ዝርዝር ይመልከቱ።



CONTACT

events@gilgameshlondon.co.uk

<https://gilgameshlondon.co.uk>



[@gilgamesh.ldn](https://www.instagram.com/gilgamesh.ldn)