

# PUSHKIN HOUSE

5a Bloomsbury Square  
Spaces for hire



DRAWING ROOM

• Bar  
• Music Room  
• Office  
• Reception Language Cafe  
• Screening Room  
• Library



# Table of Contents

Introduction

Filming and photography

Events/Celebrations

Language schools/lessons

Conferences and meetings

Private workshops

Rehearsals

Music room

Bar

Drawing Room

Screening Room

FAQS

Contact details

5a Bloomsbury Square was built on one of London's oldest squares at the turn of the 1700s and designed by Henry Flitcroft, a renowned Palladian architect who has built some of the grandest country houses of the period, including Woburn Abbey and Wentworth Woodhouse. Located at the heart of Bloomsbury in a Grade II listed building, it is perfectly suited for private and corporate hire of different rooms, a fully functioning bar, reception area and a PA system on site. The tall bay windows and white walls provide a perfect background for filming and photoshoots and create a smart yet neutral backdrop for any event. We can comfortably accommodate parties of up to 150 people across the whole building and different rooms, along with our bookshop, providing a variety of spaces to host your guests. Whether you are looking for private, corporate or location hire, we cater for a variety of functions and needs:

- Product and book launches
- Filming and photoshoots
- Corporate receptions
- Educational courses
- Business away days, board meetings & networking events
- Birthday, engagement & retirement parties

We're excited to help you plan your event, be that a private dinner, a talk or conference, a Christmas party or a drinks reception for your clients.

All our rooms are available for hire for half or full days Monday - Friday 9.00-23.00.

Weekend hires are available upon request.

The venue has a licence until 23:00, with extension available until 01:00.

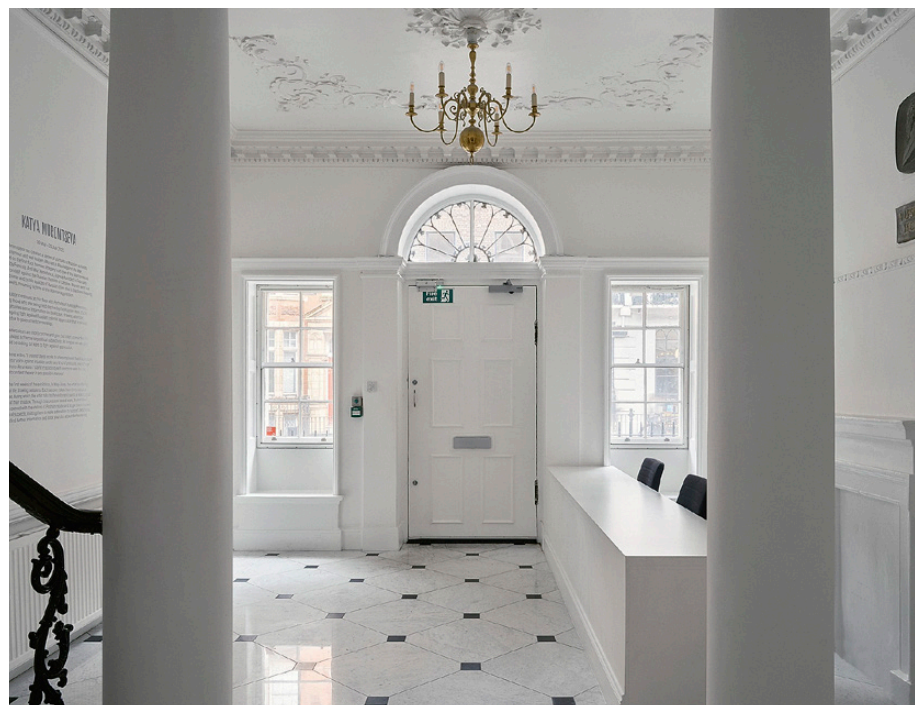




# Filming and photography

Our Grade II\* listed property offers a diverse array of filming locations: stepping inside is like stepping back in time, as many of the original features have been retained: ionic columns, elegant mouldings, ornamental plasterwork with natural motifs and Ancient Greek and Roman-inspired features throughout the house, and the centrepiece of the house, the recently restored grand limestone staircase.

For any filming or photography inquiries,  
please contact Kim Hallett  
[kim@kimhallettconsulting.co.uk](mailto:kim@kimhallettconsulting.co.uk)





# Events/Celebrations

Whether you're planning a vibrant networking event or celebrating milestones of your life, we would be delighted to host your gathering.





# Language schools and seminars

We regularly host a number of education providers, including schools and colleges. Additionally, we can provide chairs and tables in any layout needed, along with flip charts and boards to support your presentations and collaborative activities.





## Conferences and meetings

Choose our Music Room for hosting your conference or opt for one of our meeting rooms for a team away day. Our versatile layouts provide flexibility to suit your needs.





# Private workshops

Discover the ideal setting for your private workshops!  
Our well-equipped spaces provide the perfect environment for fostering creativity and collaboration.



# Rehearsals

We regularly host professional and amateur rehearsals of music, theatre, and much more. Our spaces can be adapted to suit your needs, whether you require a grand piano, high ceilings, natural light, a certain chair layout or tables.





# Music Room





# Music Room

Comfortably accommodating up to 80 people, this is the ideal space for larger events, and has been host to many music recitals, lectures, performances, and even weddings.

Tall nineteenth-century sash windows overlook the beautiful Bloomsbury Square, and original features add sophistication and refinement to any event.

The room also has a Steinway Grand Piano that is available for private events.

**Room Size:** 47.42 sqm / 510 sqft  
**Theatre style:** 55 people  
**Standing:** 80 people  
The capacity can be increased by hiring the adjoining Bar room

**Available with this room:**  
Steinway Grand Piano  
PA system (including up to 2 wireless microphones)  
50" TV  
Music stands  
Tables and chairs





Bar





# Bar

Adjoined to the Music Room is a Bar, perfect for serving drinks and refreshments as well as to adding capacity to your event by connecting the two rooms together.

## Bar Hire includes:

- the use of the space;
- the use of the fridge and freezer;
- the use of bar equipment (shakers, mixers, etc);
- the use of a glass-washer and a sink

## Bar supplies:

- We are happy to supply alcohol and staff for your event:
  - Paid per bottle, prices agreed in advance;
  - 50% deposit, based on the estimated amount of drinks, is paid in advance for us to order the stock and the rest is paid after the event, per bottle opened
- BYOB is available for a fixed fee





# Drawing Room





# Drawing Room

Located opposite the reception on the ground floor, this room overlooks Bloomsbury Square with two large windows and is perfect for board meetings and smaller gatherings, or for the start of larger events and first drinks.

**Room Size:** 27 sqm / 291 sqft  
**Theatre style:** 15 people  
**Standing:** 20 people





# Screening Room





# Screening Room

Our Screening Room is illuminated with spotlights and has a full HD projector and surround sound, making it the ideal space for film screenings, lectures and presentations. The room can be set up in various styles or left empty, depending on your needs.

For larger events, the room can be used for the caterers to prepare the food as well as for stocking drinks and any other event supplies.

**Room Size:** 43.13 sqm / 464 sqft  
**Theatre style:** 55 people  
**Standing:** 70 people

**Available with this room:**

- Elite 2.6m wide 16:9 Pull Down Screen
- 1x 5000 Lumen Full HD 16:9 Projector
- Bose Surround Sound
- Smart Blu-ray/DVD player
- Tables and chairs
- Black tablecloths
- Air conditioner





# FAQs

## Securing the booking:

To finalise and secure the room for your date, we would need the holding the deposit, which is %50 of your total hire fee, and the signed hire agreement (the terms can be found [here](#))

## Viewings:

Weekdays, between 12:30 and 17:30. We are happy to discuss your needs in person, please make sure to book your viewing in advance via [venuehire@pushkinhouse.org.uk](mailto:venuehire@pushkinhouse.org.uk)

## Catering:

We are happy to work with any caterers that our clients choose for their event. The in-house catering is limited to bar drinks and refreshments. We are happy to support arrangements with any external catering company – we will show the venue and the equipment, take care of all the logistics and handle all catering communications for you, apart from the menu choices, of course.

## Discounts:

We offer discount rates for charities and all [Pushkin House Friends and Patrons](#) receive 10% and 15% respectively – please learn more about becoming a [Friend](#) and [Patron](#).

## Decoration:

You are allowed to decorate the space if you wish. We permit any decoration or floristry that is not a permanent fixture and doesn't interfere with the building's structure.

## Late finish time:

We are open to having an event until late hours – a temporary event licence and staff hire fees will apply.

## Please note:

All hire timings include the setup and takedown time. Cleanup can be moved to the following day at an additional charge.

Please note that all costs exclude VAT. Whilst your hired spaces are exclusive, the rest of Pushkin House is open to the public at some times.





## Contact details

Hiring our spaces is a fantastic way to support Pushkin House. We are a registered charity and rely on both earned income and voluntary donations that enable our programmes to thrive today and in the future.

For all enquiries and to book viewings please contact us at [venuehire@pushkinhouse.org.uk](mailto:venuehire@pushkinhouse.org.uk)  
020 7269 9770

## Book Now

