

THE BANC

Something sweet?

FRESHLY HOME-MADE

Desserts

VANILLA VOLCANO CREAM CAKE 12

Cream cheese cake with butter, milk, vanilla beans and chocolate/custard emulsion.

TOFFEE AND HONEYCOMB CHEESECAKE 10

Description: Topped with caramel and strawberries, strawberry caviar, glass sugar, and caramelised kumquat.

LOTUS BISCOFF CHEESECAKE 10

A delightful blend of Lotus Biscoff, accompanied by Kumquat and a caramelised sugar glass.

STICKY TOFFEE PUDDING 10

Served with a side of ice cream.

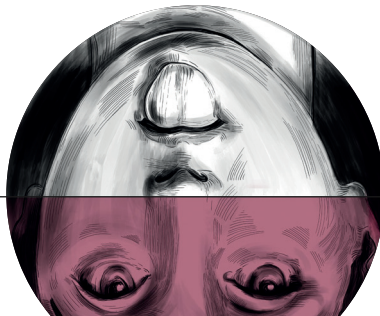
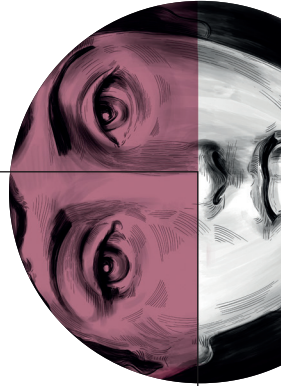
NUTELLA CHEESECAKE 10

Soft Nutella cream cheese blend with a crunchy Oreo biscuit based, served with mixed berries and custard.

ROCK SIDE BROWNIE 9

Served with honeycomb and vanilla ice cream.

May contain allergens, please notify your server of any allergies



THE BANC

Something hot?

Tea & Coffee

BANC X UNION COFFEE

- BLACK COFFEE 3
- WHITE COFFEE 3
- SINGLE ESPRESSO 2.7
- DOUBLE ESPRESSO 3
- CAPPUCCINO 3
- LATTE 3
- RED VELVET LATTE 4.5
- CHAI LATTE 4.5
- MOCHA 3
- LIQUEUR COFFEE 7
- AMERICANO 3
- FLAT WHITE 3
- HOT CHOCOLATE 3
Bounty chocolate, Oreo chocolate
or caramel syrup all +1
- COLD ICE COFFEE 3

NOVUS TEA

- ENGLISH BREAKFAST 3
- SAPPHIRE EARL GREY 3
- EGYPTIAN/PEPPERMINT 3
- PERSIAN POMEGRANATE 3
- LEMON & GINGER TEA 3

