

THE BANC Shisha



We offer an array of flavours – some classics and old favourites but also new, exciting tastes for the adventurous Shisha lovers. They all have unique undertones which make this a totally unrivalled Shisha experience.

Flavours

LAYALI 25

- FROZEN BLUEBERRY
- FROZEN RASPBERRY
- FROZEN LEMON
- FROZEN APPLE
- FROZEN MANGO
- RAINBOW CANDY
- PINK MIST
- PAAN
- LYCHEE
- BLUE MIST
- IB

SAVACCO 25

- MAGNA CARTA
Famous cuban mojito, crushed lime & ice
- PURPLE RAIN
Dark & ripe blueberry with an undertone of black grape & cooling menthol
- BLACK WIDOW
Ice cold blackberry with an undertone of ice cold peach
- SWISH
Sweet yet icy pomegranate blended with dragonfruit
- PASSIONOVA
Smooth and sweet passion fruit with a icy exhale
- BLUEPRINT
Tangy pink lemonade with a dash of sweet blueberry & black mint for an icy aftertaste

OMBRE 25

- DRAKES A380
Luscious papayas, passionfruit, mangos and melons all in a rich creamy blend. A must try!
- QUEEN BEE
Sweet Amalfi Lemons infused with Mint. Perfected balance of sweetness and acidity
- PINK POWERPUFF
An effervescent bright vibrant pink bubblegum flavour
- ORIENTAL LYCHEE
Exotic sweet Lychee with floral undertone
- RED LACE
Sweet Strawberry notes, reminiscence of Haribo's Strawberry Laces
- DARK KNIGHT
Ripe Blackcurrants with a chill of menthol
- VINEYARD
Ripe Grapes glazed with a layer of frost, a sweet mix with a touch of menthol.



Dine with us from
Monday to Thursday
and savor a
complimentary
shisha
for the table when you
order a starter and
a main course.

GERMAN 25

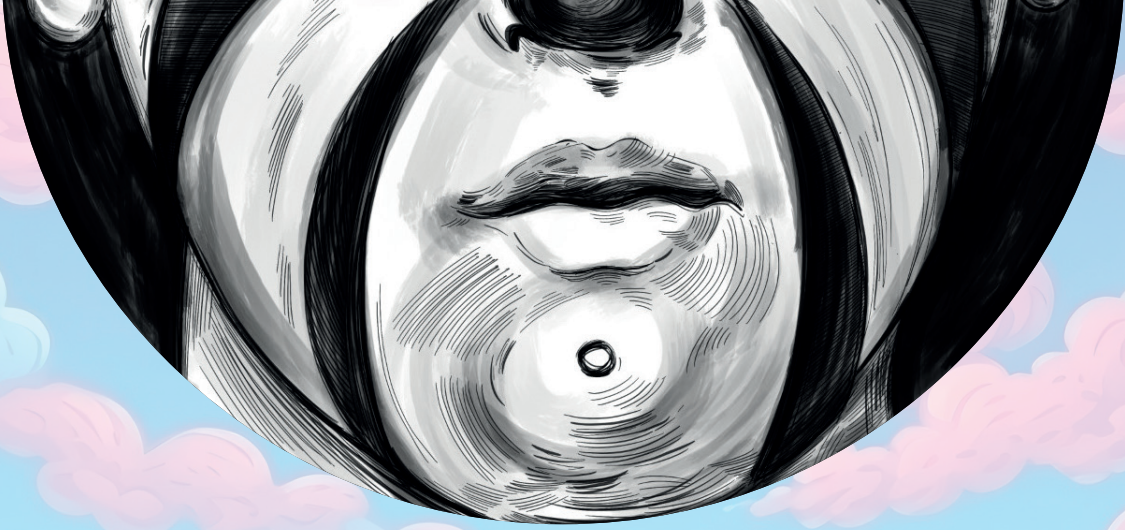
- LADY KILLER
Berry mix, mango, cataloupe, mint
- LOVE 66
The definition of love for mixed aromas. watermelon, honey melon, passion fruit & spearmint
- AFRICAN QUEEN
Mixture of exotic fruits with a main guava component

The Classics

CREATE YOUR OWN 25

You can mix your favourite fusions by combining up to three flavours from the selection below:

- DOUBLE APPLE
- GRAPE
- MINT



THE BANC

Est. 2011

