

# LADBROKE HALL

PRIVATE HIRE

*[events@ladbrokehall.com](mailto:events@ladbrokehall.com)*





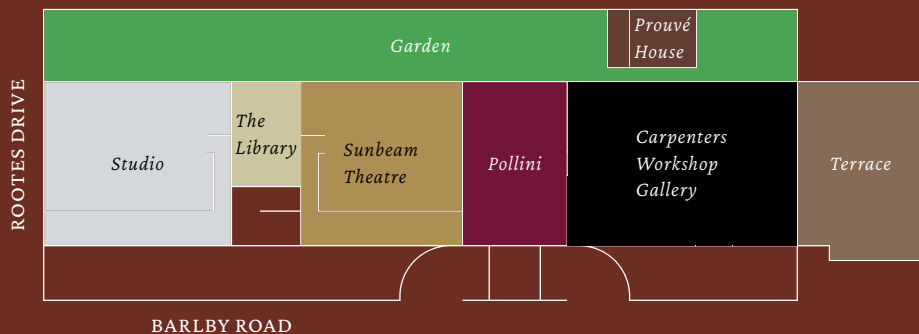
## PRIVATE HIRE

*At Ladbroke Hall*

Ladbroke Hall is a stage for the arts welcoming the creative, the kind, and the curious.

Set in the historic Sunbeam Talbot factory, it offers 7 unique and versatile spaces in West London.

Whether you're planning an intimate private dinner, a press launch, a meeting, or a dazzling party for hundreds of guests, our highly experienced events and hospitality team is here to bring your vision to life with warmth and efficiency.





## STUDIO

The Studio is an impressive and versatile space for a wide range of uses, with state-of-the-art rigging and technical capabilities. The overhanging mezzanine space features carefully restored terrazzo floors and a sculpted ironwork bannister.

---

### KEY FEATURES

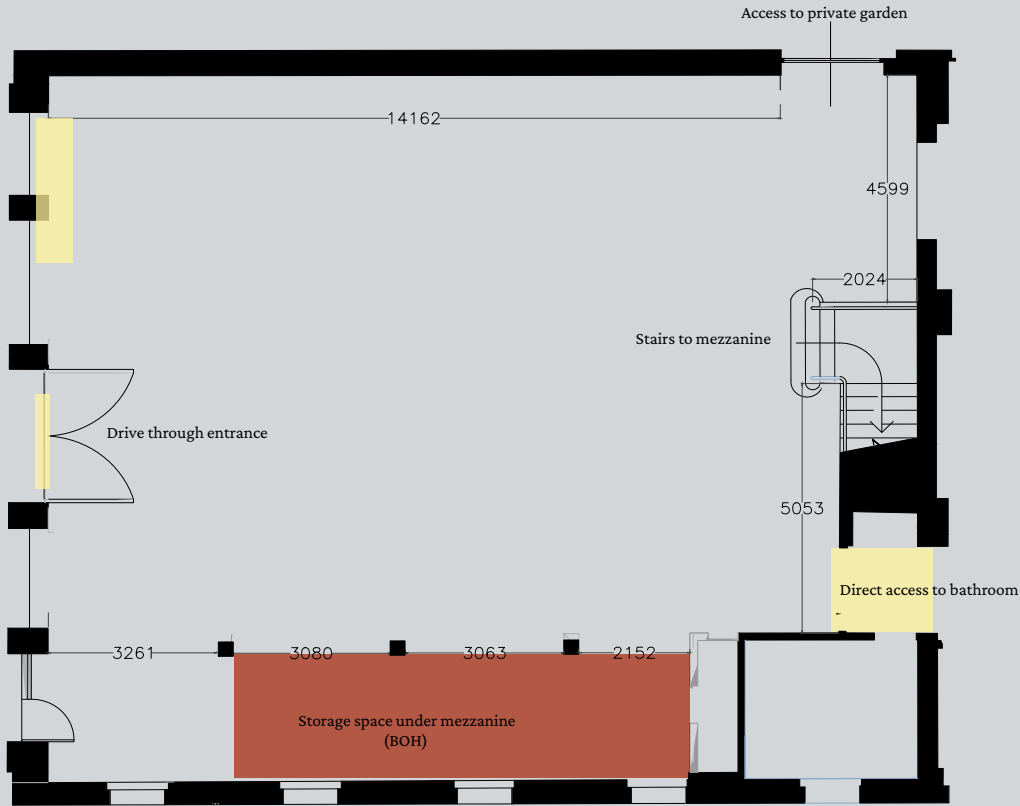
---

- Overall size: 297 m<sup>2</sup> / 3,200 sqft
- Ground floor: 227 m<sup>2</sup> / 2,443 sqft
- Mezzanine floor: 55 m<sup>2</sup> / 592 sqft
- Height: 9.95 m
- Soundproofed ceiling
- Full black-out capabilities
- Seated capacity: 220
- Standing capacity: 300
- Full AV and production capabilities
- High speed WiFi 400 mbps
- State-of-the-art acoustics
- Full in-house catering on request
- Step-free street access for convenient loading / unloading

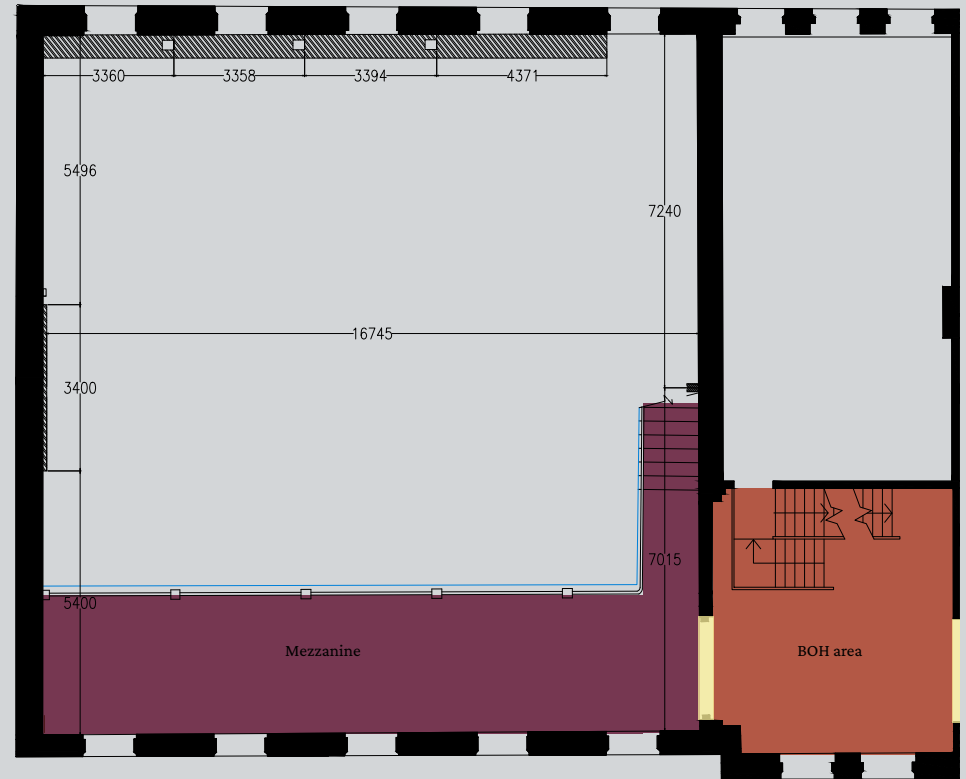


# FLOORPLAN




We have an in-house tech team to support production on request. Further details such as tech specs, truss dimensions and CAD documents, can also be provided.



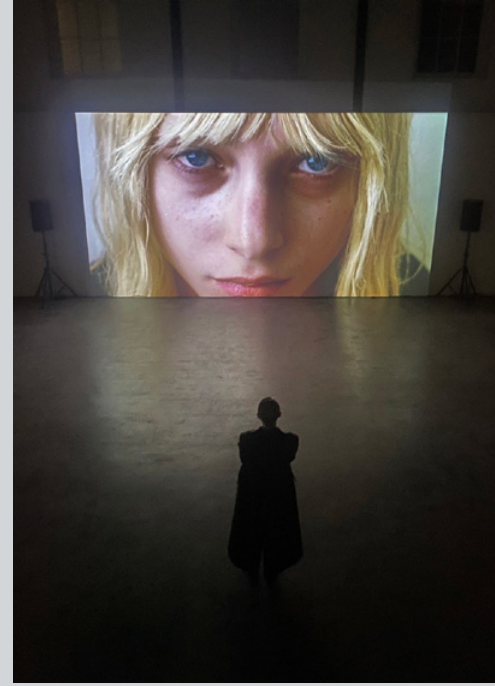
Ground Floor



First Floor

-  All Access Points
-  Available BOH Areas on Request
-  First Floor – Balcony Area









## SUNBEAM THEATRE

With its original 1903 Sunbeam Talbot wall crest, the Sunbeam Theatre stands as one of the most iconic venues at Ladbroke Hall. Its grand staircase, parquet floors, and custom-made bar provide a glamorous backdrop, while the Steinway piano and raised stage make it the perfect setting for live music performances.

---

### KEY FEATURES

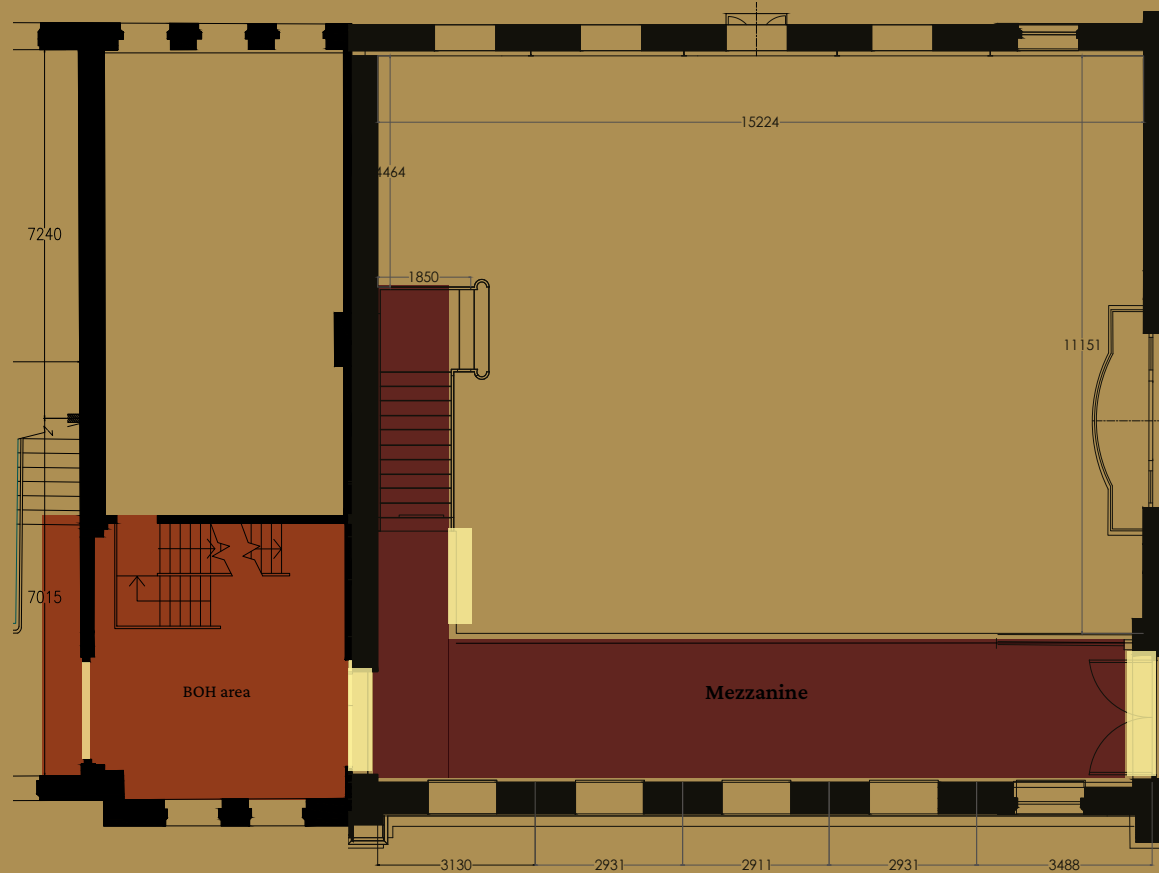
---




- Overall size: 278 m<sup>2</sup> / 3,000 sqft
- Height: 9.95 m
- Soundproofed ceiling
- Full black-out capabilities
- Seated capacity: Banquet 140 / Performance 130
- Standing capacity: 300
- Full AV and production capabilities
- High speed WiFi 400 mbps
- State-of-the-art acoustics
- Functional Bar available
- Steinway grand piano model D
- Full in-house catering on request



## FLOORPLAN

We have an in-house tech team to support production on request. Further details such as tech specs, truss dimensions and CAD documents, can also be provided.



-  All Access Points
-  Available BOH Areas on Request
-  First Floor – Balcony Area









# POLLINI

at

LADBROKE HALL

Pollini, Ladbroke Hall's restaurant, is an Art Deco vaulted space, serving dishes by renowned Italian chef Emanuele Pollini.

The restaurant offers a vibrant atmosphere with impeccable acoustics, making it a unique setting for drinks or dining.

The space includes a monumental chandelier by Nacho Carbonell, paintings by Christopher Le Brun, and architecture by Vincenzo de Cotiis.

---

## KEY FEATURES

---

- Overall size: 123 m<sup>2</sup> / 1324 sqft
- Height: 14 m
- Seated capacity: 65
- Standing capacity: 150
- State-of-the-art acoustics
- Modular seating
- Permanent artworks on view

[SAMPLE MENU](#)









## THE LIBRARY

Ideal for intimate gatherings or professional meetings, the Library provides an exclusive and elegant setting designed by artist Ingrid Donat. The private room overlooks the garden and features sculpted wood and bronze paneling. It creates a cocoon-like atmosphere with a Dolby Atmos immersive sound system.

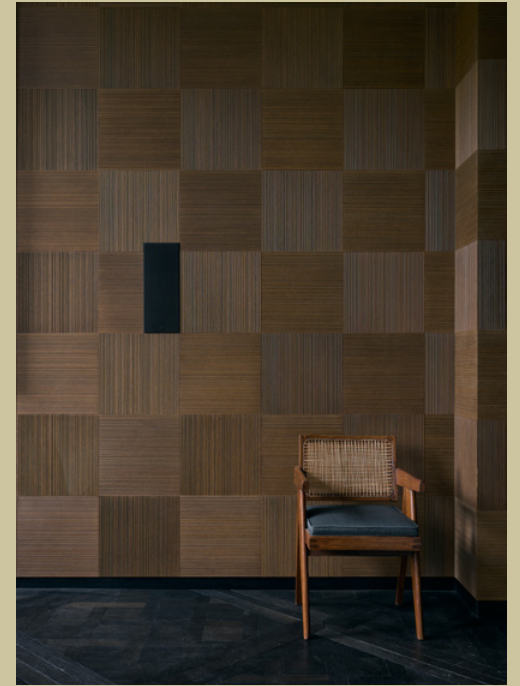
---

### KEY FEATURES

---

- Overall size: 55.7 m<sup>2</sup> / 600 sqft
- Height: 4.1 m
- Seated capacity: 14
- Dolby Atmos 18 Focal speakers & Denon amp
- High speed WiFi 400 mbps









## TERRACE

A hanging garden designed by Chelsea Flower Show winner Luciano Giubbilei, the terrace is planted with a lush pergola of wisteria and potted hydrangeas. It is available for functions in Spring and Summer for up to 30 standing and 20 seated guests as well as photoshoots.

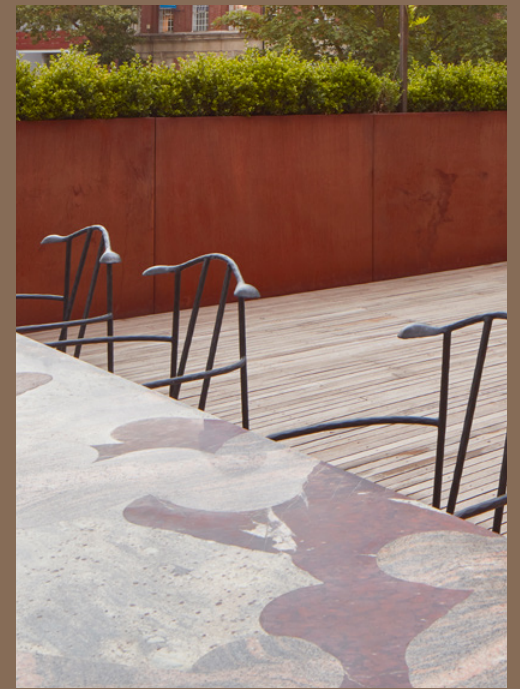
---

### KEY FEATURES

---

- Overall size: 74 m<sup>2</sup> / 796 sqft
- Seated capacity: 20
- Standing capacity: 30
- Licensing: 9am – 9:30pm
- Fixed Robert Stadler Dining Table









## GARDEN

Lush canopies in peaceful surroundings, the landscaped garden at Ladbroke Hall was designed by Chelsea Flower Show winner Luciano Giubbilei. Dotted with Carpenters Workshop Gallery's iconic sculptures and home to a rare Prouvé house, the garden is the perfect setting for an al fresco lunch, or evening drinks.

---

### KEY FEATURES

---

- Overall size: 1,162 m<sup>2</sup> / 12,500 sqft
- Seated capacity: 80
- Standing capacity: 300
- Licensing: 9am – 9:30pm









## PROUVÉ HOUSE

The garden is home to *Maison Démontable*, one of Jean Prouvé's models of the 6×6 house from 1944 for intimate private dining, daytime meetings and gatherings.

Overlooking the garden oasis, this unique space is the perfect setting for a memorable evening between friends, or a focused team workshop.

---

### KEY FEATURES

---

- Overall size: 36 m<sup>2</sup> / 388 sqft
- Seated capacity: 24
- Standing capacity: 30
- Licensing: 9am – 9:30pm
- Underfloor heating
- High speed WiFi 400 mbps









## CATERING

*Delicious food and uncompromising quality*

In-house catering is provided by Pollini at Ladbroke Hall. Chef Emmanuelle Pollini sources the freshest seasonal produce for his authentic Italian cuisine. The restaurant was awarded the Gambero Rosso Three Forks for Top Italian Restaurant in March 2024.

Catering menus are available on request, with a range of options from simple dishes bursting with flavour, to sophisticated culinary delights.

---

### BESPOKE MENUS

---

- Full bar service & creative cocktail creation
- Canapés & drinks reception
- Bowl food
- 3 or 5 course set menu

SAMPLE MENU











## THE LADBROKE HALL TEAM

*Our expertise at your service*

The team are experts at planning and producing hundreds of events for Ladbroke Hall and its clients. We pride ourselves on meticulous service and warmth.

We handle every aspect of your event, from intimate gathering to grand celebrations.

---

### WHAT SETS US APART

---

- 50+ experienced professionals across events planning, production and F&B
- Versatile events team
- Award-winning food and catering
- In-house lighting, sound and staging experts











## ENHANCE YOUR EVENT

*Live music, talks and tours*

Ladbroke Hall offers a packed cultural programme from art & design exhibitions at Carpenters Workshop Gallery, to talks and Friday Jazz with some of the world's best musical talents.

---

### SOME SUGGESTIONS\*

---

- Carpenters Workshop Gallery and garden private tour
- Gallery opening invitation and drinks
- Tickets to Friday Jazz: Performance and dinner

*\*Speak to our team for bespoke ideas.*

WHAT'S ON











## FAQs

*Contact us for any other questions*

### **What is included in my hire?**

- Use of our motorised truss
- WiFi at 400 mbps each way
- Blackout blinds
- Acoustic capabilities

### **Can I work with suppliers not on your preferred supplier list?**

We know how important your suppliers are to you and welcome yours to our space. However, catering by Pollini is used in all of our spaces, aside from the Studio.

### **Any restrictions across the building?**

Please request the list of restrictions as any damages to the building, including floors and walls will be charged additionally. Load out/in takes place during the hours of 8am to 10:30pm as we are mindful of our neighbours. The building operates extended hours.

### **Are there any additional fixed costs to be aware of?**

We cover basic cleaning of the space and kindly ask you to leave the space as you found it. Cleaning fees could be charged in addition if not left as it was. Our catering is not included and is chargeable in addition to the room hire. We have an in-house tech spec of our AV equipment available upon request. Additional AV equipment not on our inventory, and use of our tech engineers are chargeable in addition.

### **Can I hire the the Studio for a long period?**

Yes, of course. We have no restrictions on length of hire period, subject to availability.





THANK YOU

*Hope to see you soon*

79 Barlby Road, London, W10 6AZ

[events@ladbrokehall.com](mailto:events@ladbrokehall.com)

