

# Café MISSION



## Group Dining & Events

**“That rarest of rare things:  
a genuine FIND!”**  
Marina O’Loughlin, award-winning  
food writer

# About Café Mission

From the team behind Europe's biggest yoga and movement studio comes Café Mission - a rooftop restaurant, lounge bar and terrace in a light and airy warehouse-style setting that blends a New York industrial-chic aesthetic with the creative energy of its local surrounds. Featuring laid back playlists, Café Mission is perfect for catching up or winding down.

During the day, Café Mission seamlessly moves between breakfast, brunch and lunch, with the kitchen open until around 5pm (pending the day). In the evenings, the venue shifts more towards private events and is available for exclusive hires, residencies and pop-ups.

Whether you're enjoying a meal in the restaurant, sipping a drink at the bar, or soaking up the sun and vista from the roof terrace, Café Mission marks an exciting new addition to the Shoreditch food and drink scene.

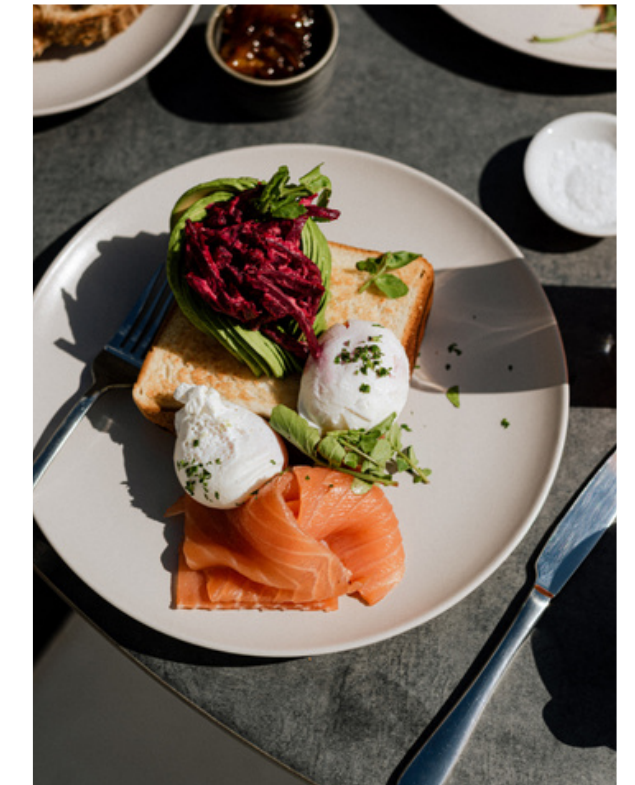


# The food

Café Mission's menus offer a refined, produce-driven take on breakfast, brunch, and lunch, where seasonal ingredients and clean, umami-forward flavours take center stage. Expect timeless brunch favourites done just right - Shakshuka (there's a vegan option too), French Toast, and Poached Eggs with Beetroot & Watercress accompanied by Grilled Shokupan. There's also energy rich Japanese Sandos made with milk bread, Caesar Salads with Yuzu Croutons, and Glazed Miso Aubergine with Pink Quinoa.

Meanwhile the event menus feature fresh, flavourful ingredients that change with the seasons - guests can choose between canapés, bowl food and plated set menus, or even combine all three.

Rooted in Japanese sensibilities – balance, seasonality, and quiet refinement – Café Mission's menus fuse local ingredients with international capabilities, offering a considered yet dynamic dining experience.





## **The bar and lounge**

Café Mission's commitment to sustainability extends beyond the food and is also reflected in its interiors. The sofas and armchairs that adorn its beloved lounge bar were sourced on eBay and refurbished locally.

The bar team at Café Mission offers the all-important classics (Paloma, Aperol Spritz, and Bloody Mary), as well as a good selection of non-alcoholic cocktails like the fan favourite Blazing Pineapple. Combined with an inviting natural wine list, the lounge bar is an ideal spot for those looking for more of a laid-back setting.



## The terrace

Café Mission's rooftop terrace offers a hidden oasis above the bustling streets of Shoreditch. Perched atop the historic Fashion Street warehouse, it blends the restaurant's cool, industrial charm with a cosy, bohemian vibe. Serving the restaurant's full food and drink offering, the terrace welcomes both diners and drinkers alike. It's also a spectacular setting for a special event be it a wedding or corporate gathering.

Whilst a canopy of parasols provides shade during the day, as the sun sets the terrace transforms into a lively, yet relaxed destination. It's the perfect hideaway for unwinding, or meeting friends for a casual evening looking out across the London skyline.

# Group dining & events

Café Mission welcomes groups and parties whatever the size.

For gatherings of up to 28, all guests can be seated at one long table and the menu will be served family style. For up to 65, a more informal, buffet-style meal is recommended so that people can sit casually around the room. Finally, for exclusive hires of 65+, it tends to be more of a standing affair supported by a generous offering of both bowl food and canapés, with plenty of spots to grab a seat for anyone who needs it.

For exclusive use, the restaurant, lounge bar and roof terrace can all be taken together; alternatively, the individual spaces can be hired separately.

Café Mission provides a brilliant option for both corporate and social functions, and whilst the following sample menus are themed, they are by no means fixed.



# Sample menus | Set menus

## Option 1

Grilled miso aubergine, sesame & tofu

-

Teriyaki ChalkStream® trout, edamame puree,  
fennel & chilli

-

Panna cotta, sake poached strawberries

£35 per person

## Option 2

Yuzu Kosho bruschetta, tomato, shiso, olive oil  
& burrata

-

Miso marinated Sutton Hoo chicken, asparagus,  
crushed potatoes, tarragon vinaigrette

-

Pistachio, polenta & olive oil cake, crème  
fraîche, raspberries

£48 per person

## Option 3

Tataki sea trout, puffed rice, shiso, ponzu sauce

-

Aged beef sirloin, potato & leek gratin, salt  
baked baby beetroot, balsamic

-

Baked yuzu & blueberry cheesecake, summer  
fruits

£55 per person

# Sample menus | Canapés & Bowl Food

## Canapés

Grilled oyster mushrooms, dengaku miso (ve)

-

Chicken yakitori, sweet soy

-

Cucumber, crab mayonnaise & shiso

-

Shrimp tempura, wasabi mayonnaise

-

Tataki ChalkStream® trout, yuzu miso, bubu arare

-

Chicken karaage, tonkatsu sauce

-

Lotus chips, spicy carrot salad, toasted sesame (ve)

-

Nori chips, furikake, salt baked beetroot (ve)

-

Yuzu kosho croutons, fennel & coriander (ve)

£7 per canapé (2 pieces)

## Bowl food

Burrata, sweet chilli & basil (v)

-

Tomato & shiso salad, ginger soy (ve)

-

Beef yakitori, sweet soy, pickles

-

Chicken karaage, shredded hispi, Kewpie mayonnaise

-

Chicken katsu sando, tonkatsu sauce

-

Smoked aubergine, sesame, lotus chips (ve)

-

ChalkStream® trout, teriyaki, pickled fennel & chilli

-

Miso glazed aubergine, tofu dressing, sesame (ve)

£7 per bowl

# Area sizes and capacities

<b>SPACE</b>	<b>SIZE</b>	<b>MAX. CAPACITY</b>
One long table	n/a	28 seated
Exclusive hire restaurant & bar (excl. roof terrace)	2,000 ft <sup>2</sup>	50 seated   120 standing reception
Exclusive hire restaurant & bar (inc. roof terrace)	3,000 ft <sup>2</sup>	50 (inside) & 25 (outside) seated   170 standing reception
Exclusive hire roof garden (excl. restaurant & bar)	1,000 ft <sup>2</sup>	25 seated   50 standing reception



## What else is on offer?

Café Mission sits on top of Mission, the biggest movement centre in Europe with 15,000 ft<sup>2</sup> of space housing five studios, two treatment rooms, extensive changing facilities and a sauna. Here, you'll find London's best teachers leading Pilates, Yoga, Calisthenics, Capoeira, Boxing and BJJ classes. Bespoke packages are available incorporating both private classes (and / or treatments) at the studio followed by a meal in the restaurant.

DJ points are available both inside the restaurant and outside, on the roof terrace.

Shoreditch Town Hall is less than 5-mins away by car (and 15 mins on foot) for those looking for the perfect celebratory venue post wedding / civil partnership.

# THANK YOU

For further information or to request a quote or site visit, please contact the team on:  
cafe@mission-e1.com | 020 3011 1080

## **Café Mission**

7 - 9 Fashion Street, London E1 6PX

[mission-e1.com/restaurant](http://mission-e1.com/restaurant)

[@cafemission.e1](https://www.instagram.com/cafemission.e1)