

[Y]OUR EVENT SPACE



C = (A + B + O) * V
FREQ 127 NEX 11 VIBES 100%

Protein Studios

We have FIVE interconnected spaces available for hire individually or configured to suit your event – Studios 1,2+3 are a great hire option for memorable impact, or Studios 4+5 suit larger productions. Looking to go really big? WHY NOT HIRE THEM ALL.

All of our studios offer double height ceilings, street and vehicle access and excellent natural light.

We also have a DEDICATED on-site Studios team and a host of TRUSTED event PARTNERS to handle any requests – from tech production to catering.



STUDIOS AT A GLANCE

13,000 sq ft of space

5 interconnecting studios

Up to 1000 standing capacity

450 seated capacity

1000+ events since opening in 2018

500,000+ people through the door (we think!)

Drinks consumed.. we couldn't tell you

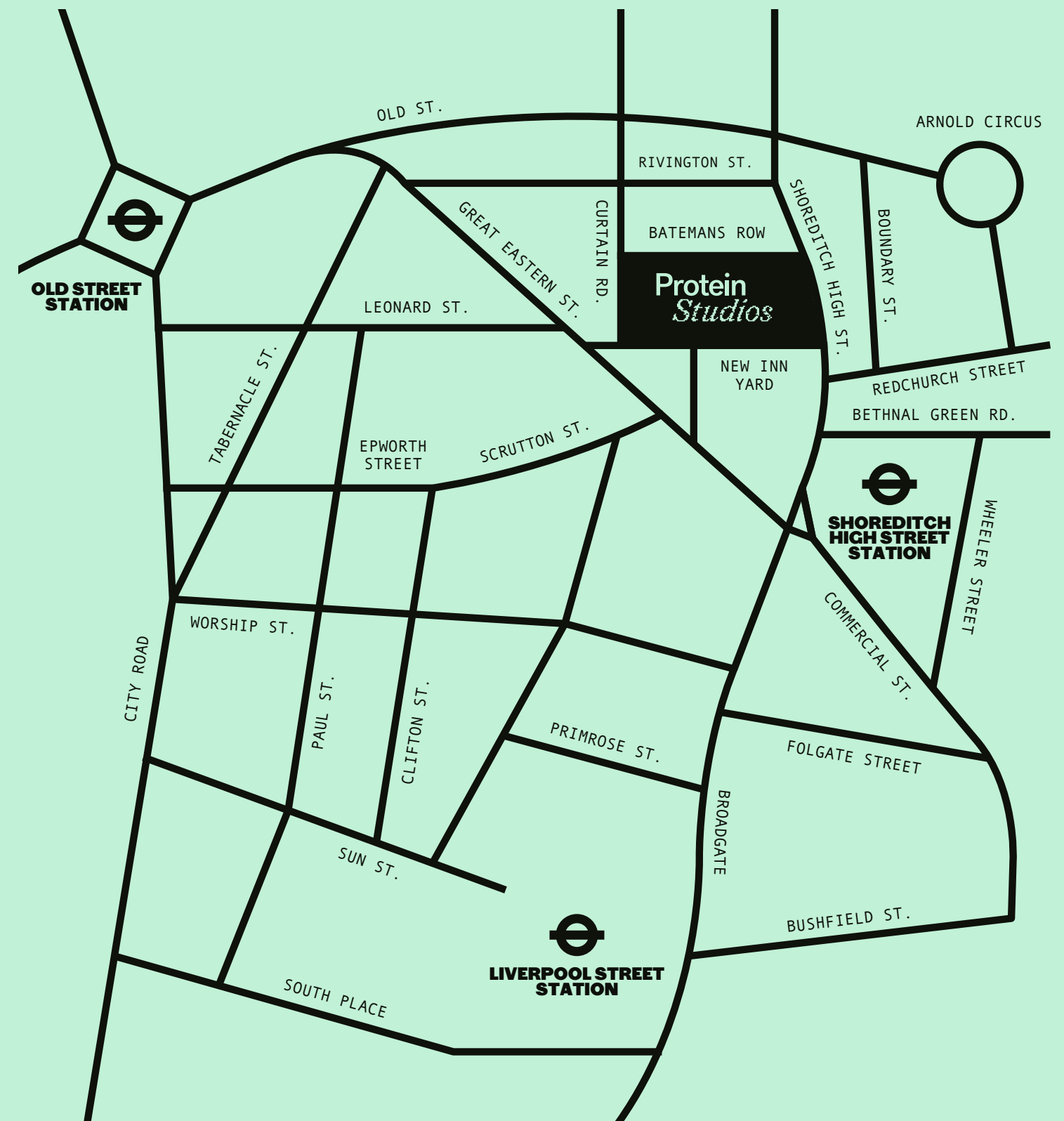
Good ENERGY included!



You'll find us in the "Shoreditch Triangle" – the HEART of East London's creative and design district. Situated between the BUZZING SHOREDITCH HIGH STREET, Great Eastern Street, Curtain Road, and the soon-to-be-launched SHOREDITCH VILLAGE. We have UNPARALLELED pedestrian footfall all year round, and are neighbours with Shoreditch House, Brick Lane and One Hundred Shoreditch.



P.S. THE IDEAL LOCATION



TUBE STOPS: WALKING DISTANCE
SHOREDITCH HIGH STREET: 5MINS
LIVERPOOL STREET: 11MINS
OLD STREET: 11MINS

P.S. HIRE PACK ©2024

C = (A + B + O) * V
 FREQ 127 NEX 11 VIBES 100%

FLOORPLAN

Key Measurements (approx)

STUDIO 1

- 80 sqm
- 9m x 8.8m
- Floor to ceiling: 5m

STUDIO 2

- 135 sqm
- 9m x 15m
- Floor to ceiling: 5m
- Shutter: 4.2m x 5.5m
- Floor to halo light: 3.9m

STUDIO 3

- 50 sqm
- 9m x 5.5m

LOOKING FOR LAYOUT INSPIRATION? EXPLORE A VARIETY OF OPTIONS [HERE](#)

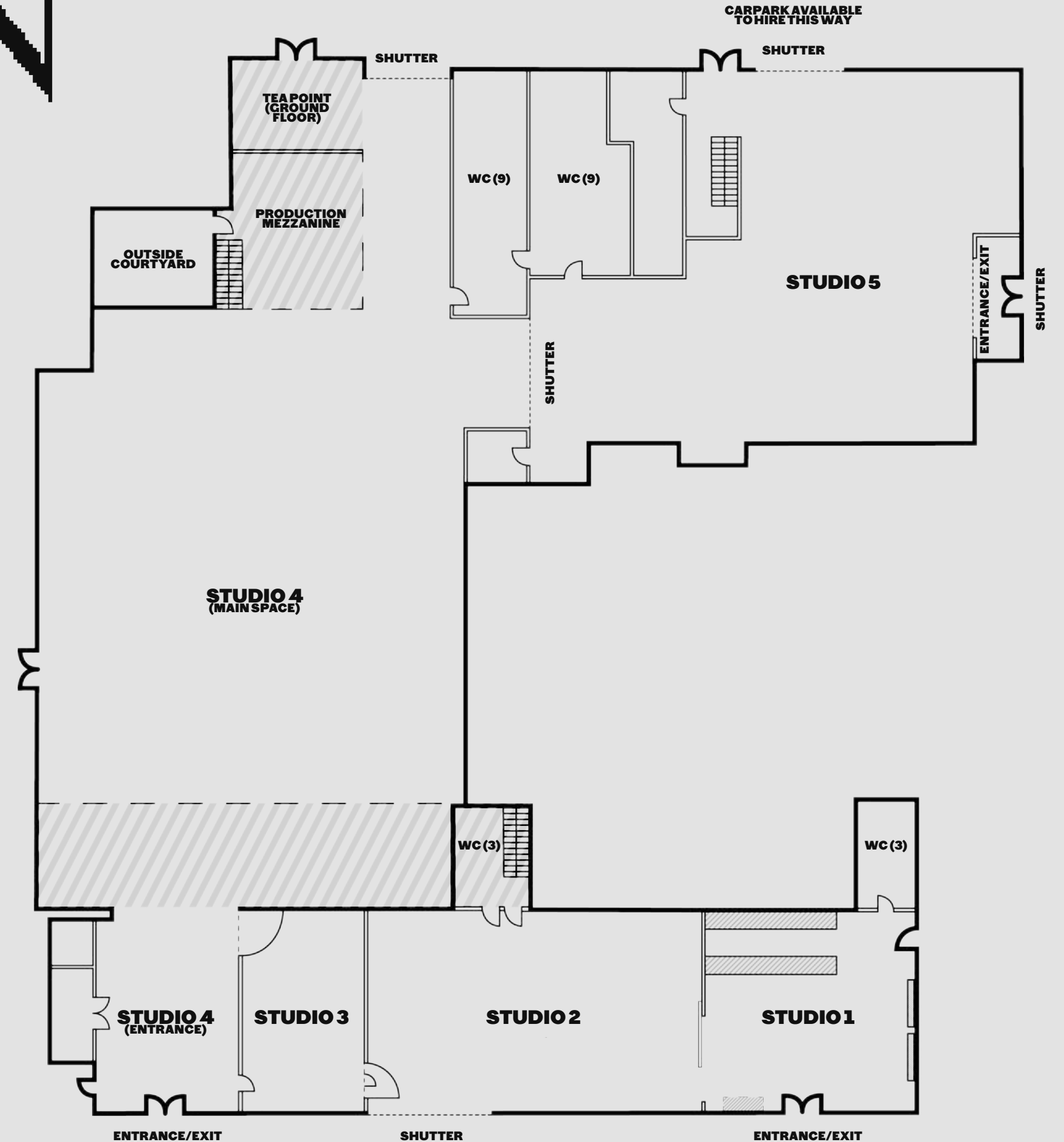
STUDIO 4

- 648 sqm
- Entrance: 9m x 6.3m
- Main space: 17.9m x 26m
- Low level: 5m
- Floor to highest point: 8.5m

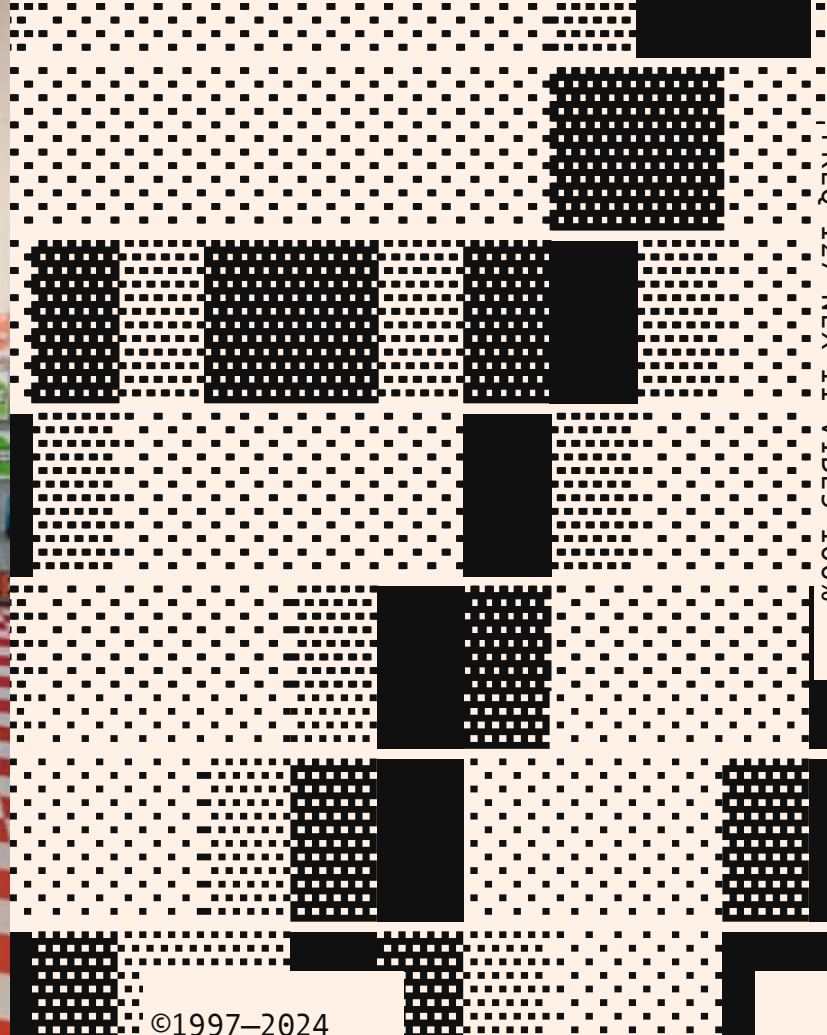
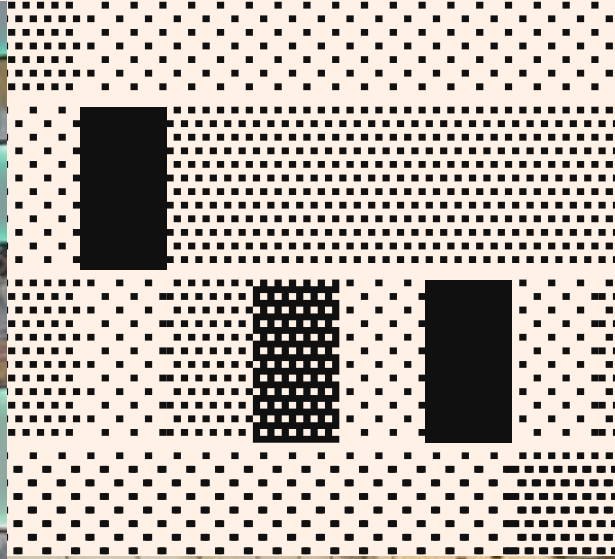
STUDIO 5

- 255 sqm
- 18.5m x 16m
- Floor to highest point: 6.7m

PLEASE REQUEST CADS IF YOU'RE LOOKING FOR EXACT MEASUREMENTS



STUDIO 1



For a warm and inviting entrance, Studio 1 sets the tone for any event. With its distinctive Tala light installation, a stylish tiled counter ideal for a bar setup, and seamless sliding doors leading into Studio 2, this versatile space can transform into anything from a cozy coffee-break nook to a chic cocktail bar.

CAPACITY

Standing: 100
Theatre: 50

LIGHTING & AV

Tala light installation
In-house PA (hireable via KSS)

*CAPACITIES ARE BASED ON THE SPACE BEING EMPTY

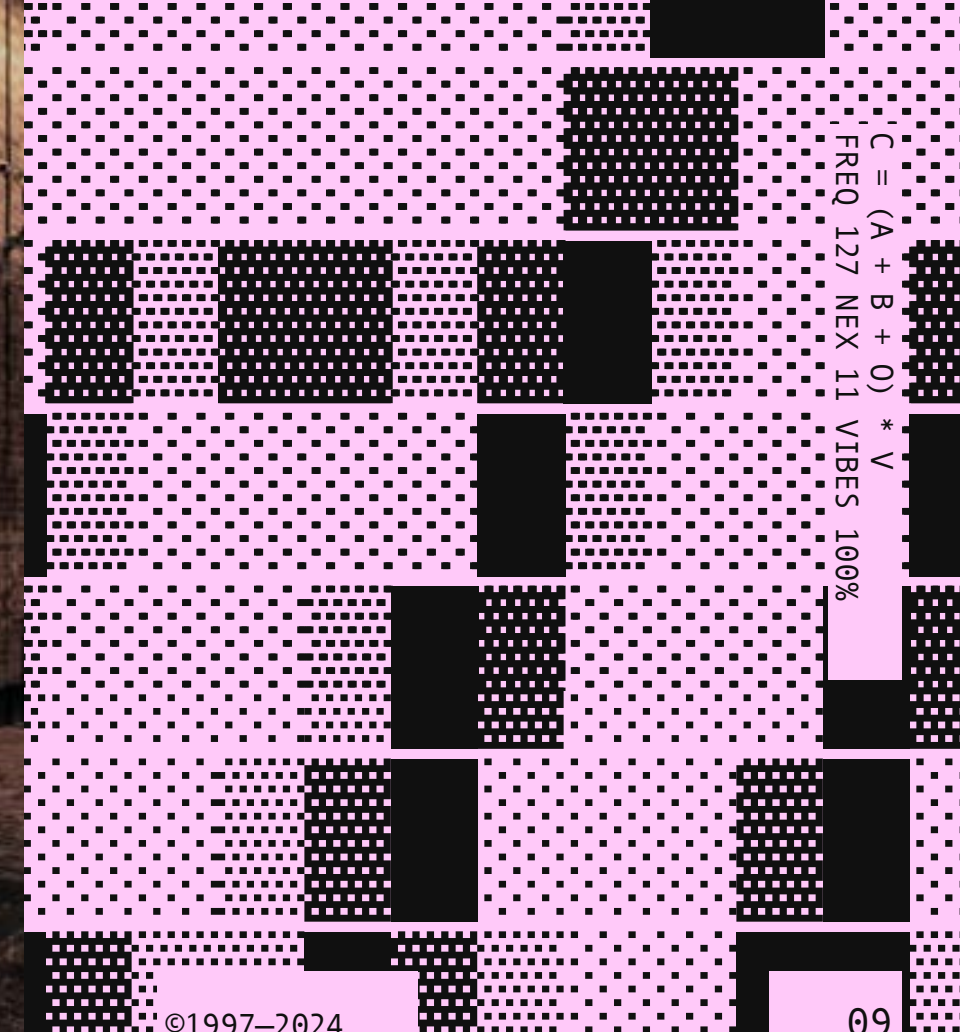
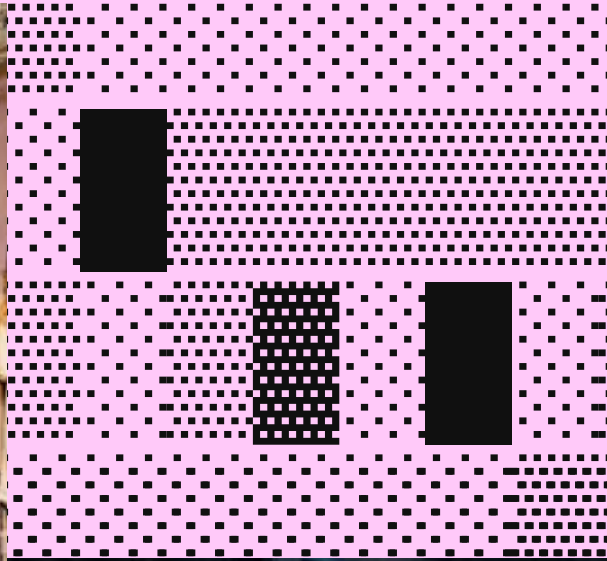
PERFECT FOR...

- Entrance & cloakroom
- Bar area
- Panel talks
- Workshops

C = (A + B + 0) * V
FREQ 127 NEX 11 VIBES 100%



STUDIO 2



As the largest of our three front-facing spaces, Studio 2 has hosted a wide range of events. From mid-scale brand activations, exhibitions to pop-ups, this versatile space has seen it all. With convenient shutter access, you can walk or even drive directly into the space.

CAPACITY

Standing: 200
Theatre: 120

LIGHTING & AV

Halogen halo
Spot lights
In-house PA (hireable via KSS)
LED strip lights (hireable via KSS)

*CAPACITIES ARE BASED ON THE SPACE BEING EMPTY

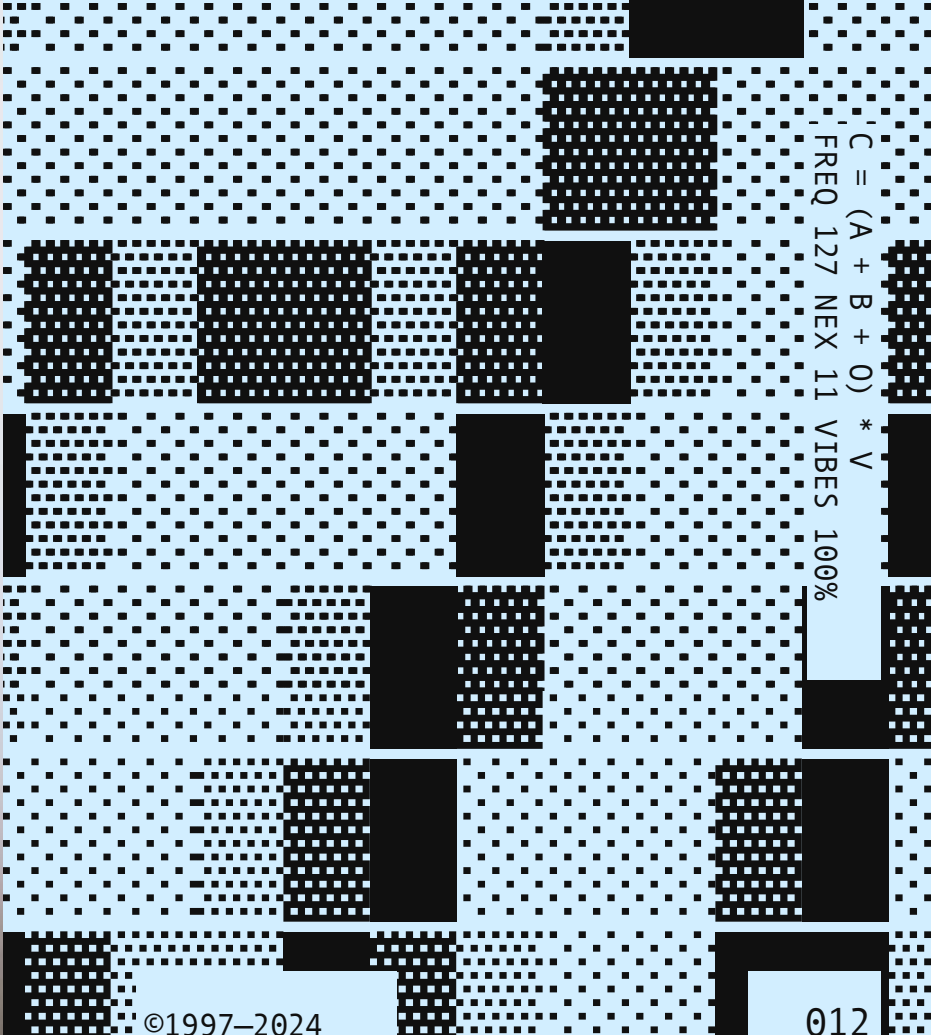
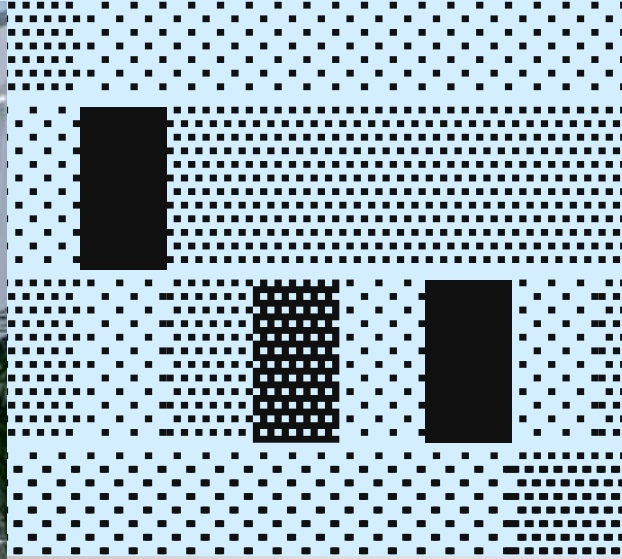
PERFECT FOR...

Pop-ups
Exhibitions
Brand activations
Conferences

C = (A + B + O) * V
FREQ 127 NEX 11 VIBES 100%



STUDIO 3



Our smallest studio is here to remind you that size isn't everything! The perfect back-of-house, cloak room, or relaxing green room. Alternatively, extend your Studio 2 & 4 activities into this neighbouring space.

CAPACITY

Standing: 50
Theatre: 30

*CAPACITIES ARE BASED ON THE SPACE BEING EMPTY

LIGHTING & AV

Halogen strip lighting
In-house PA (hireable via KSS)

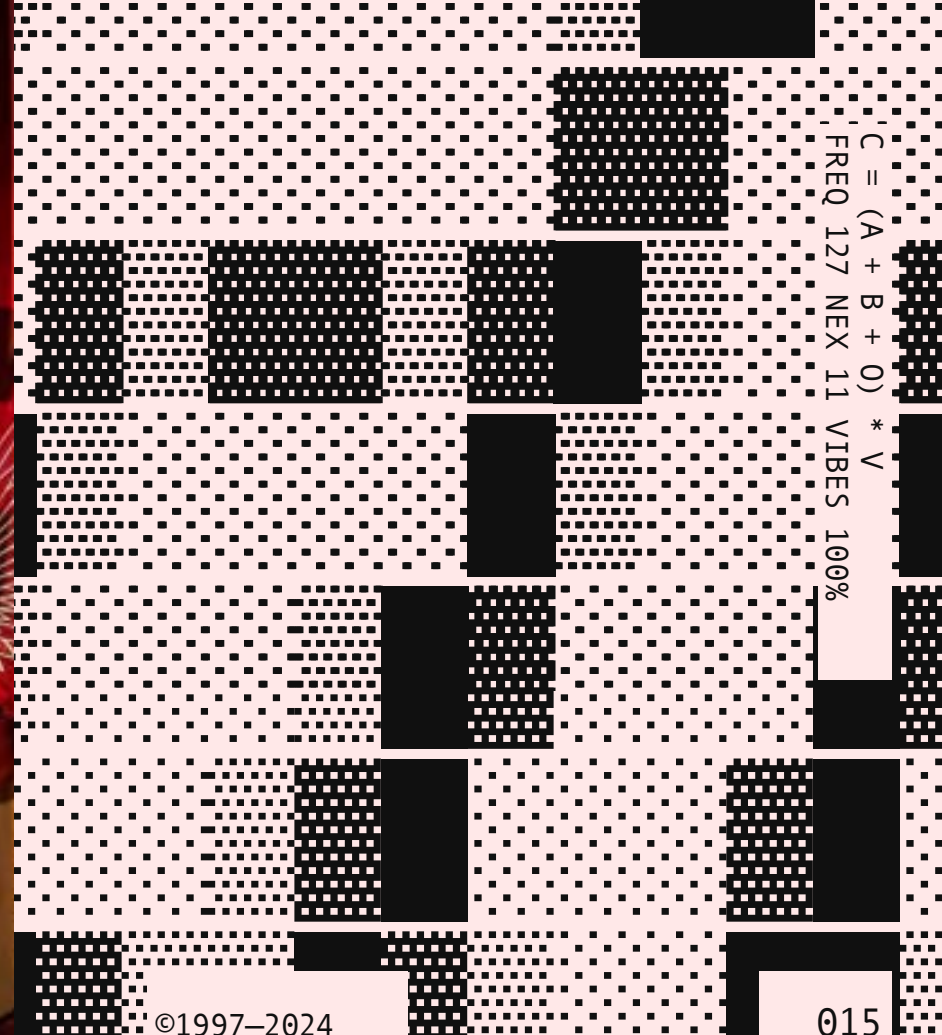
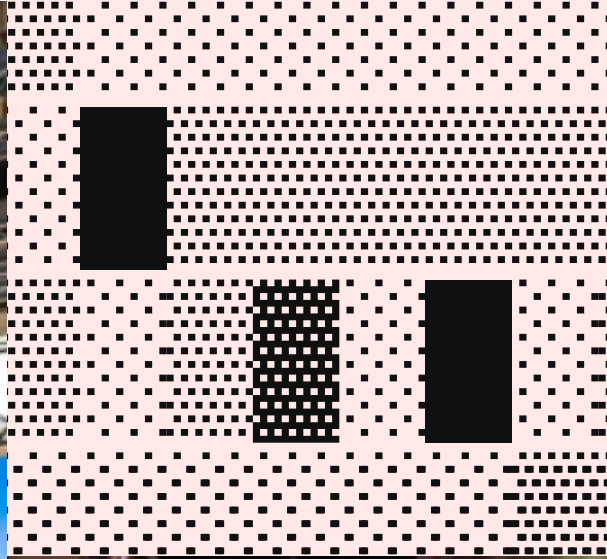
PERFECT FOR...

Back of house & catering
Breakout area
Food & beverage

C = (A + B + O) * V
FREQ 127 NEX 11 VIBES 100%



STUDIO 4 & 5



With 10,000 sq.ft of space and 8.5-meter-high vaulted ceilings, along with a dedicated production office and an outdoor courtyard, Studios 4 + 5 offer a spacious, airy ambiance with an industrial warehouse vibe. This versatile setting is ideal for hosting cutting-edge events, from fashion shows to large-scale productions and performances.

CAPACITY

Standing: 700
Theatre (S4) 400 - 450
Theatre (S5) 200 - 250

LIGHTING & AV

Industrial bolt heads
Chauvet colorado (hireable via KSS)
Full AV available to hire via KSS

*CAPACITIES ARE BASED ON THE SPACE BEING EMPTY

PERFECT FOR...

Conferences
Car launches
Fashion shows
Brand activations
Launch parties
Film/photo shoots

C = (A + B + O) * V
FREQ 127 NEX 11 VIBES 100%







HIRE COSTS

P.S. CASH MONEY HUNNI

STUDIO 1	Full day Evening Per hour	8:30am - 10pm 5pm - 10pm Before 8:30am & After 10pm	£2,000 + VAT On application £150 + VAT
STUDIO 2	Full day Per hour	8:30am - 10pm Before 8:30am & After 10pm	£3,000 + VAT £220 + VAT
STUDIO 3	Full day Per hour	8:30am - 10pm Before 8:30am & After 10pm	£1,000 + VAT £75 + VAT
STUDIO 4 & 5	Full day Per hour	8:30am - 10pm Before 8:30am & After 10pm	£9,500 + VAT £700 + VAT

*DISCOUNTS AVAILABLE FOR LONGER DURATION HIRES

INCLUDED:

- Power
- 1GB WIFI / hard wire ethernet
- General waste & recycling allocation
- Production office [Studio 4 + 5 only]
- Good vibes!

MANDATORY EVENT COSTS:

- Venue management - £30 + VAT per hour
- Event management - £40 + VAT per hour
- Security - £35 + VAT per hour [6 hour minimum]
- Post event deep cleaning - £100 - £800 + VAT depending on scale of event

NOTES:

- Venue management** cost apply after 5pm on weekdays and for the full day during weekends
- Event management** is required on all live event days where your capacity excuses 100 guests
- Security** is mandatory for all live events - you are required to have 2 operatives on each entrance + 1 operative inside per every 50 guests
- We do not offer solo hire of Studios 1 and 3
- Setup / de-rig must take place within the hire period
- If you're looking to run later than 10pm, we can apply for a TEN subject to availability and an additional fee

P.S. HIRE PACK ©2024

C = (A + B + 0) * V
FREQ 127 NEX 11 VIBES 100%

OUR PARTNERS

P.S. OUR LITTLE BLACK BOOK

Looking for support with event production or catering? We've got you covered. Our little black book of trusted partners and reliable local suppliers ensures you get the best in the business:

cater

CATER LONDON

FASHION, PRODUCT AND EVENT
CATERING AND BARS
CATERLONDON.CO.UK

KSS

KSS

AV, TECH EQUIPMENT HIRE
AND MANAGEMENT
KSSAUDIO.CO.UK

Twenty SIX

TWENTY SIX

BESPOKE BARS, DRINKS PACKAGES
& STAFFING
WEARETWENTYSIX.COM

FoundPop

FOUND POP

RETAIL FIT-OUTS, RAILS AND
FASHION EVENT FURNISHINGS
FOUNDPOP.COM

OK TO COLOUR

OKTO COLOUR

VINYL GRAPHICS, PRINTS
AND INSTALLATIONS
OKTOCOLOUR.COM



FURNITURE ON THE MOVE

BEAUTIFUL & UNIQUE
FURNITURE HIRE
FURNITUREONTHEMOVE.CO.UK



JUNO HIRE

BESPOKE FURNITURE HIRE
AND EVENT RENTALS
JUNOHIRE.COM

KERB EVENTS

KERB EVENTS

INDEPENDENT FOOD VENDORS
AND DRINK SERVICES
KERBEVENTS.COM

DINNER LADIES

DINNER LADIES

SUSTAINABLE, FOOD PACKED WITH
UNFORGETTABLE FLAVOUR
DINNERLADIESLTD.COM



YAHIRE

CONFERENCE FURNISHINGS, CORPORATE
FIT-OUTS AND EXHIBITION HIRE
YAHIRE.COM

WORKSPACE

P.S. GOOD VIBES SINCE '97

Need somewhere to work during your event?
We have a beautiful workspace upstairs at Protein Studios with day passes and super flexible options available for you, your team, and your clients. For more info speak to a member of our Studios team.

P.S. HIRE PACK ©2024

C = (A + B + O) * V
FREQ 127 NEX 11 VIBES 100%

SEE YOU SOON

P.S. GET IN TOUCH

IF YOU HAVE ANY QUESTIONS,
YOU CAN FIND OUR [FAQS HERE](#)
OR CONTACT THE TEAM FOR
ANYTHING ELSE:

CALL: 0207247 3999

EMAIL: INFO@PROTEINSTUDIOS.COM

P.S. HIRE PACK ©2024



C = (A + B + 0) * V
FREQ 127 NEX 11 VIBES 100%