



RHS

Royal Horticultural Halls



Lindley Hall

Events Brochure 2024

Contents

Lindley Hall: an introduction	3
Meetings and conferences	5
Exhibitions	7
Dinners and awards	9
Receptions and product launches	11
Wine tasting	13
Fashion shows	15
Exams	16
Filming	17
Venue dimensions	18
Venue hire rates	19
Why hire Lindley Hall	20
Contact us	21



Welcome to **Lindley Hall**

Based on a quiet leafy square in the heart of Westminster, Lindley Hall has been hosting a variety of events since it first opened in 1904.

Originally built to host botanic art exhibitions it now entertains the most prestigious events from dinners to fashion shows, product launches to exams, exhibitions to conferences - Lindley Hall has accommodated them all.

Grade II listed with a beautiful glass-vaulted ceiling that lets an abundance of natural light into this blank canvas venue. Together with our capacity to rig from our high ceiling, clients can use every inch of space Lindley Hall offers.

Exclusivity is key and our carefully selected range of trusted suppliers for catering, production and theming are an integral part of our event success, along with our on-site dedicated team who will help you every step of the way!

We look forward to working with you on your next event!

Contact the team on:

T: 02078213650

E: horthalls@rhs.org.uk

W: rhonline.co.uk





Meetings and conferences

With its central London location, Lindley Hall is the ideal space for companies to inspire, motivate and network. The flexible space allows organisers to host in a variety of different layouts.

In-house equipment includes an intelligent lighting system for washing with brand colours, a lectern, modular stage, and a PA system for announcements and background music.

The Halls have proudly hosted conferences for some of the world's biggest brands including Barclays, The White Company and Costa Coffee as well as high security events such as President Barack Obama speaking at a town hall style meeting.

ROOM LAYOUT	MAX. CAPACITY
CABARET with reception	280
CABARET without reception	352
THEATRE with reception	480
CLASSROOM	351





Exhibitions

Lindley Hall provides an expansive and versatile space to customise for your exhibition. With a total area of 875 square metres, Lindley Hall is the ideal venue for world-class exhibitions.

With an abundance of natural light flooding in through the high glass vaulted ceiling and bouncing off the white walls, the hall is a perfect blank canvas for your brand.

Lindley Hall provides an adaptable backdrop for exhibitions allowing you to tailor the space to meet your event requirements.

The hall features a large three-tonne goods lift, which accesses both street and hall level, allowing for simple load in and load out for your exhibitors and suppliers.

ROOM LAYOUT	MAX. CAPACITY
TABLE TOP (6ft tables)	140 STANDS
SHELL SCHEME (1mx2m)	160 STANDS
SHELL SCHEME (2mx2m)	100 STANDS
SHELL SCHEME (3mx2m)	61 STANDS





Dinners and awards

A magnificent venue in the heart of Westminster, Lindley Hall provides the perfect backdrop for an evening of extraordinary dining. Whether you are planning to hold a gala dinner party, grand banquet or awards night, Lindley Hall is a venue that you can transform as you wish to accomplish your event visualisation.

Boasting capacity for 450 guests, with areas for a bar, dance floor, VIPs or press, Lindley Hall is a multipurpose private dining venue that offers endless possibilities.

For every event that we host, we work with a selection of London's finest caterers, AV and entertainment companies.

Late licences are also available - please enquire for further details.

ROOM LAYOUT	MAX. CAPACITY
DINNER DANCE with reception	350
BANQUET TABLES with reception	396
DINNER (5'6" tables) with reception	459
DINNER DANCE with no reception	480





Receptions and product launches

As one of London's largest uninterrupted floor spaces, Lindley Hall is designed to provide a perfect blank canvas for your reception, without compromising on its unique period features. With room to accommodate 650 standing guests, the space can be customised for example to include cars, street food stalls and tasting tables as well as performers, such as roaming musicians and aerial artists to add colour and vibrancy to your event.

There are many opportunities to brand both inside and outside the hall as well as covering the floor with carpet or vinyl to really make your event stand out. The hall has attracted the crème de la crème of car launches over time, with Lamborghini launching the Urus following Renault's F1 Car Launch and Maserati's Levante.

Late licences are also available – please enquire for further details.

ROOM LAYOUT	MAX. CAPACITY
STANDING RECEPTION with informal seating	650
Please note that the final capacity for guests will depend on the size of staging and production.	





Wine tastings

Our stunning glass-vaulted ceiling lets in a wealth of natural light making the hall a perfect venue for wine tastings.

Lindley Hall has a long tradition of hosting wine events, with the first being The Festival of Wine in 1951. Organisers love the light and tranquillity of the space so the wines can do the talking! With a capacity of up to 140 tables - trestle tables and chairs are available in-house free of charge.

The hall also features a large three-tonne goods lift, which accesses both street and hall level.

There are endless possibilities for wine companies to brand the venue to really make it their own; including hanging banners around the walls, from the ceiling and outside the venue, as well as covering floors, doors and walls with branded vinyl.

ROOM LAYOUT	MAX. CAPACITY
TABLE TOP (6ft Tables)	140 STANDS
CLASSROOM TASTING	350





Fashion shows

A versatile fashion show venue in the heart of London, Lindley Hall provides a spectacular backdrop for your latest collection. The infrastructure below the 14-metre-high, glass-vaulted ceiling allows for a high capacity of rigging, so clients can use every square inch of space the hall offers.

A favourite during the world renowned London Fashion Week, designers Fashion houses and designers such as Alexander McQueen, Paul Costelloe, Tom Ford and Chanel have showcased their collections at the Halls.

Working together with our team to create high-fashion moments that artistically display their expertise and creativity in a beautiful setting.

Lindley Hall can feature a full-size catwalk, as well as up to 500 seated guests; and is equipped with a back of house area ideal for hair and make-up or for backstage and press use.

ROOM LAYOUT	MAX. CAPACITY
MIXED SEATING AND STANDING	600
Please note that the final capacity for guests will depend on the size of staging and production.	



Exams

Lindley Hall at Royal Horticultural Halls has held exams since 1906 and is the London venue of choice for external school or university examinations.

Boasting a stunning period setting that sets the scene for education, we can accommodate up to 450 desks.

For each examination, we will provide you with our in-house specialist exam desks, chairs, clocks, and a separate invigilator area.

Security is offered should you need it, as well as a cloakroom, PA system and secure room for storing exam papers.

We have a dedicated 1gb/s internet connection in the hall included in your hire cost.

ROOM LAYOUT	MAX. CAPACITY
EXAM DESKS	450



Filming

Since first opening our doors in 1904, Lindley Hall has hosted a variety of famous faces, from Ellie Goulding to Harry Styles.

Our central London filming location is the ideal backdrop for all manner of films, TV programmes, music videos, adverts and more.

The hall is a 'hidden gem' filming location within Westminster, which is yours to transform precisely to your needs.

Whether your filming specification requires natural daylight or a blackout, to create a game show set, a car advert, or a music video - Lindley Hall has seen it all!

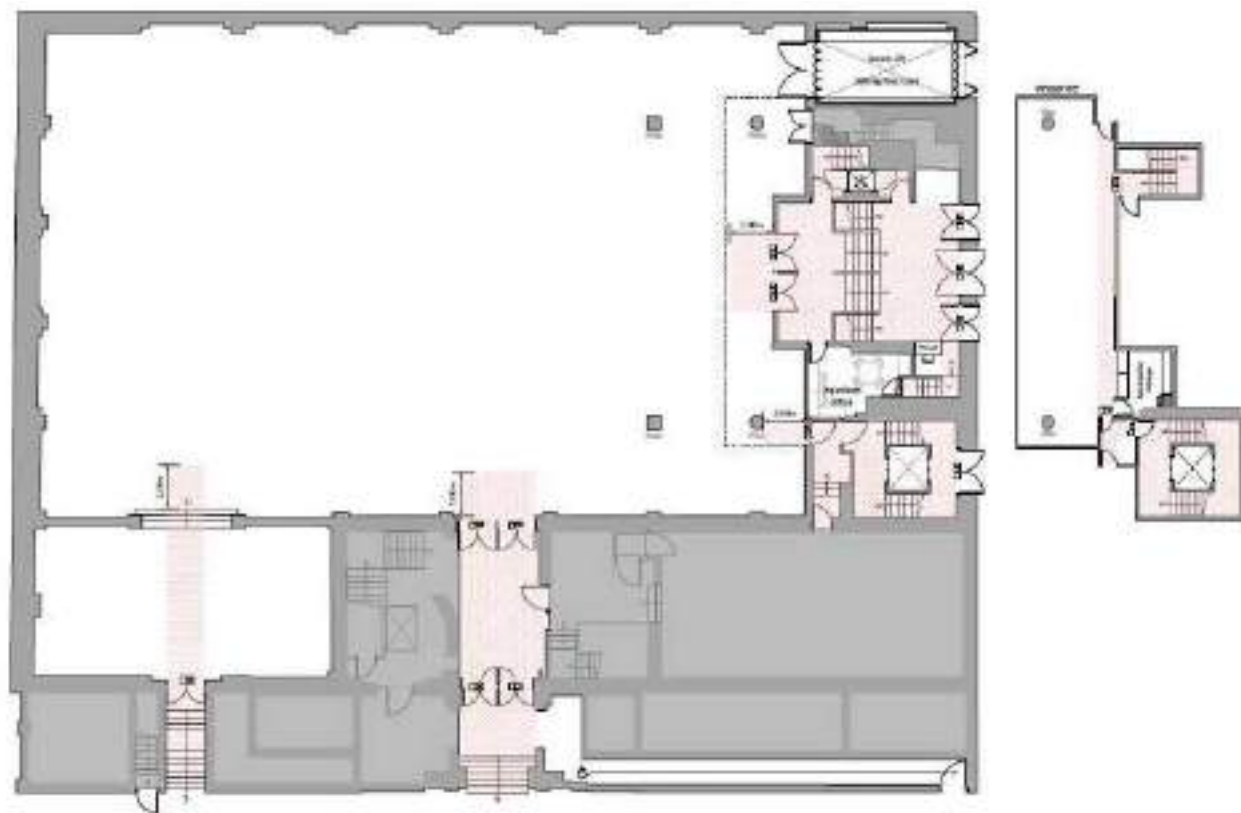
Our experienced team are on hand to ensure every step of the process goes smoothly, from creation to completion.

ROOM LAYOUT	MAX. CAPACITY
FILMING	600
Please note that the final capacity will depend on the size of staging and production.	



Venue dimensions

SPACE NAME	DIMENSIONS
MAIN HALL	Length: 36m Width: 22m Ceiling Height: 14.75m
NORTH ANNEXE	Length: 13.4m Width: 6.3m Ceiling Height: 14.75m
MEZZANINE BALCONY	Length: 16m Width: 4.5m Ceiling Height: 2.3m



Venue hire rates

Please find below our basic venue hire rates for 2024

All prices listed below are ex. VAT

	Full Day 08:00 – 00:00	12-hour Hire 12 hours between 08:00 – 00:00	Half Day 08:00 - 13:00 13:00 – 19:00	Evening Hire 16:00 – 00:00
Monday - Saturday	£13,000	£10,000	£8,750	£9,750

	Full Day 09:00 – 23:00	12-hour Hire 12 hours between 09:00 – 23:00	Half Day 09:00 - 13:00 13:00 – 19:00	Evening Hire 16:00 – 22:00
Sunday	£11,000	£8,750	£8,500	£8,500

A fixed electrics installation fee also applies, this will depend on what type of event you're hosting. Please contact the team to find out more.

Late license extensions (up to 2am) can be bought at £1,000 + VAT per hour.

To arrange a viewing, provisionally hold a date, or for more details please speak to a member of the Venue Sales team:

T: 020 7821 3650

E: horthalls@rhs.org.uk

W: rhonline.co.uk



Why hire Lindley Hall?

Lindley Hall is one of the most versatile venues in central London allowing you to push the boundaries of what can be achieved in the world of events.

Our location in the heart of Westminster, within close walking distance to Victoria mainline station, St. James's Park and Pimlico tube stations, makes our venue a great choice for public events offering ease of access and for private events offering exclusivity.

With capacity to accommodate ceiling rigging, internal car displays, endless branding opportunities, overnight builds and de-rigs, plus a wide range of first-class accredited suppliers, all within 875 sq. meters of blank canvas floor space, Lindley Hall is a venue to be considered for all types of events.

Our dedicated in-house events team are on hand to make your event a great success and surpass all expectations so you will want to return to Lindley Hall time and time again!

By hiring Lindley Hall you will also be actively supporting the charitable projects of The Royal Horticultural Society (RHS).

The RHS has endless initiatives designed to get the nation gardening, and is also one of the biggest innovators in horticultural science and research, safeguarding the conservation and biodiversity of the UK. For more information please visit the RHS website via rhs.org.uk

Included in your venue hire:

- Furniture, including banquet chairs, trestle tables, poseur tables.
- Black draping to divide the room if required.
- Operational staff, inc. cloakroom, and cleaning (pre and post event).
- Dedicated internet connection of 1gb/s.



Contact us

We'd love to talk to you about your event!

Please contact our dedicated Venue Team on:

T: 02078213650

E: horthalls@rhs.org.uk

W: rhonline.co.uk

