

WATERSHED

Venue Hire 2026



**We offer fully accessible
Venue Hire for events,
with superb service, flexible spaces and
world class technical support,
it is a prime location for conferences,
meetings and events, on Bristol's
historic harbourside.**

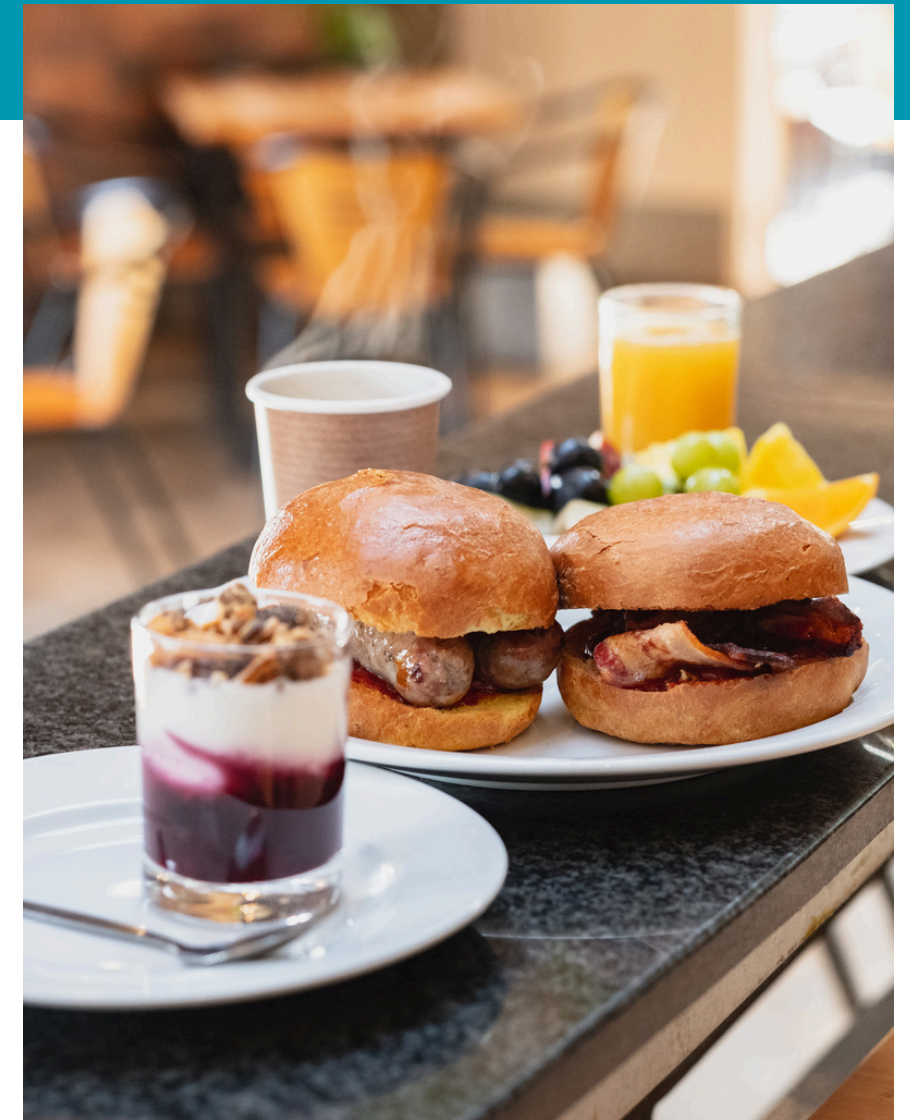
**The dedicated award-winning Events
Team and the in-house AV/Tech and
catering teams work with you, to tailor
your event or, conference to perfectly
match your requirements.**

**Watershed's long-term commitment to
sustainability is at the heart of our
events, and we are thrilled to announce
that we have gained the Greengage
ECOsmart Certificate!**

**Plan your event with your
dedicated Event
Coordinator > supported
by our amazing in-house
AV & Tech and Catering
Teams**



**Excellent Event
Management > Impeccable
on-the-day delivery**



Venue Hire



Waterside 1

Appropriate for small meetings, break out space, and interviews. The first three Waterside spaces have large double doors which open for free flowing movement between them.

Capacity:

- Boardroom: 15
- Cabaret: 25
- Theatre: 35
- Horseshoe: 15

Tech Capabilities:

Technician set-up only, 85inch 4K screen, wifi / internet connection, flipcharts, Audio for laptop. No hearing loop available. Hybrid OWL camera set up at additional costs.



Waterside 2

Appropriate for small meetings, workshops, break out space, and interviews.

The first three Waterside spaces have large double doors which open for free flowing movement between them.

Capacity:

- Boardroom: 20
- Cabaret: 35
- Theatre: 45
- Horseshoe: 20

Tech Capabilities:

Technician set-up only, screen and projector, wifi / internet connection, flipcharts, Audio for laptop. Hearing loop available on demand. Hybrid camera and OWL camera set up at additional costs.



New Space!

The Workshop

Another new space launching this October at Watershed.

Boardroom only (max 12) - with window nook.

Tech Capabilities:

Technician set-up only, 70inch 4K screen, wifi / internet connection, flipcharts, Audio for laptop. No hearing loop available. Hybrid OWL camera set up at additional costs.

Waterside 3

Works brilliantly for large conferences, away days, and celebrations. The first three Waterside spaces have large double doors which open for free flowing movement between them

Capacity:

- Boardroom: 25
- Cabaret: 70
- Theatre: 120
- Horseshoe: 30
- Standing: 200

Tech Capabilities: Technician support, screen and projector, wifi / internet connection, flipcharts, Audio for laptop and background music, lectern with a mic, 2 wireless mics (lapel or roving) and top table on stage with table mics. Hearing loop available.

Streaming and recording set up available at extra costs.



New Space!



Waterside 4

Waterside 4 is a light and airy space, filled with plants and overlooking Bristol's historic harbourside. It has an attached Green Room, perfect for informal breakouts, storage, or to serve as a base for event organisers.

Layout options & capacities:

- Cabaret: 36 people
- Boardroom: 25 people
- Theatre: 60 people
- Standing: 60 people

Tech Capabilities: WiFi internet connection, Digital projector and screen. HDMI, DVI & VGA laptop connectors, DVD and BluRay player, Audio speakers for films, laptops or mics, Audio recording, at additional cost, Camera set-ups for hybrid meetings, recording or streaming, at additional cost, Lectern, Two roving mics

Cinema 1

Appropriate for large conferences, talks, panels, screenings, & presentations

Capacity: 197

Tech Capabilities: Technician set-up and 1 technician throughout if required, screen and projector, wifi / internet connection, flipcharts, Audio for laptop, films and background music, lectern with a mic, 4 wireless mics in total (lapel and/or roving) and top table on stage with table mics. Hearing loop available.



Cinema 2

Perfect for small workshops, screenings, and presentations

Capacity: 42

Tech Capabilities: Technician set-up only, screen and projector, wifi / internet connection, flipcharts, Audio for laptop/films. Hearing loop available.

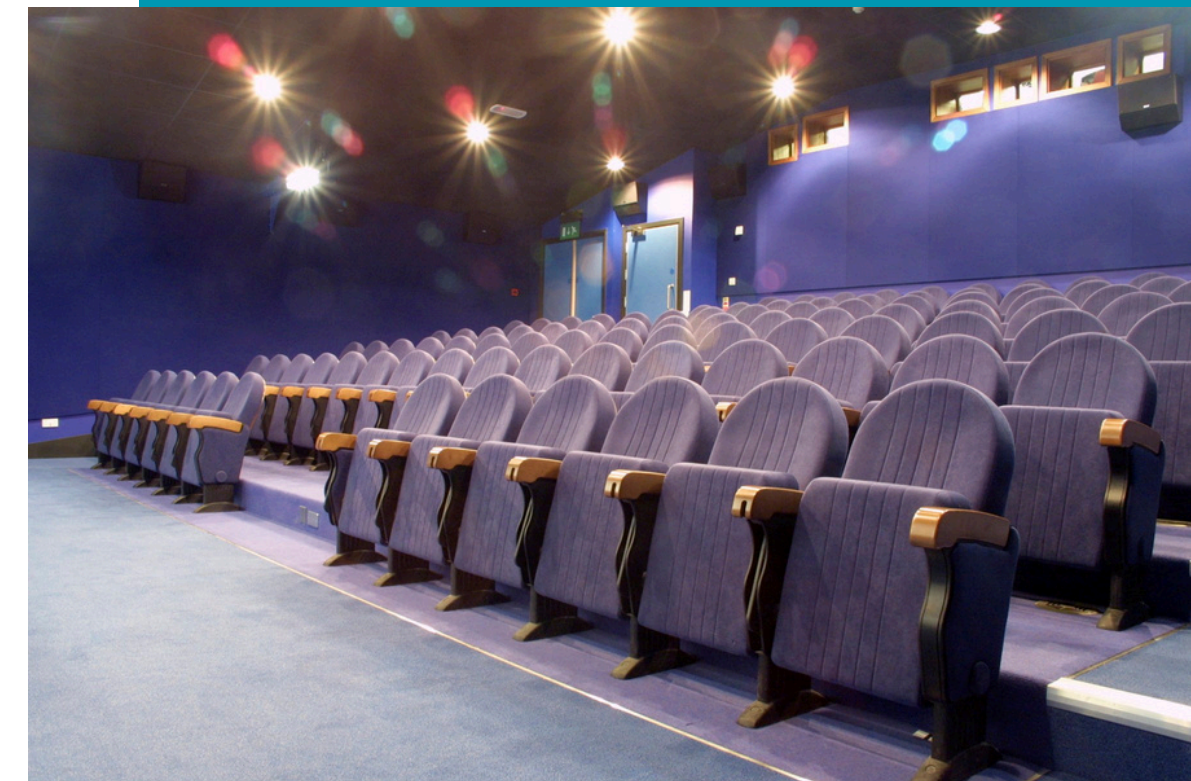
Cinema 3

Appropriate for large conferences, talks, panels, screenings, and presentations

Capacity: 100

Tech Capabilities: Technician set-up and 1 technician throughout if required, screen and projector, wifi / internet connection, flipcharts, Audio for laptop, films and background music, lectern with a mic, 3 wireless mics in total (lapel and/or roving) and top table on stage with table mics. Hearing loop available.

Streaming and recording set up available at extra costs.



Venue Hire



Audio Visual & Technical Services

Whether you're planning a panel discussion, afternoon workshop or multi-day conference, Watershed's industry leading technical facilities & team provide world-class event services for clients who want a professional, high-spec experience for their delegates.

The AV Team make sure all rooms are event ready before you arrive and your Event Team will assist with your final set up to ensure a smooth and stress-free start to your event. Clients also have full technical support throughout the duration of your event, included as standard.

Broadcasting Packages

Choose Watershed to take your event online for a seamless live digital experience.

Online Events: Choose from our cinema screens or conferencing spaces to hold your event. Our in-house technical team can livestream or record your talks in addition to mixing in talks – and questions – from anywhere else in the world.

Hybrid Events: Get the best of both worlds – delegates can participate in your event at Watershed while a virtual audience can tune in online at the same time. We'll make sure your virtual delegates don't miss out on any of the offline conference experience.



Catering

Bristol-based suppliers

Arbor Ales
Wogans Coffee
Bristol Syrup Company
Origin Butchers
6 O'Clock Gin
Bristol Distillery Co.
Bristol Cider Co.
Wiper & True
Spiegel and Peach
New Bristol Brewery
Good Chemistry
Swoon Gelato
Sweet Bird
Zuma Drinks
Counter Culture
Tribo Drinks

South West-based suppliers

Electric Bear
St Austell
Glastonbury Brewing Co.
Frome Brewing Company
Utopian Brewery
Butcombe
Craft Botanicals
Wing of St Mawes
Navas Mixers
Drinks Kitchen
Botanics Craft Drinks
Iford Cider

WATERSHED

We love working with our Bristol and South West based suppliers to give you the best taste of our region.

In-house catering means our menus can be adapted to suit you. We offer excellent in-house catering for Conferences and Events at Watershed. Our talented Chefs work with our great team to provide seasonal, freshly prepared food for all of your events.

We offer locally sourced, ethical menus for healthy breakfasts, hot or cold finger buffets, canapés, bread and olives, and tasty working lunches including fresh fruit, tortilla wraps, and our famous Watershed brownies.

All our catering is done right here in Watershed's kitchen and prices can be adapted around your needs.



"We truly appreciated how accommodating and helpful everyone was and how delicious the lunch catering was! Special thanks to the kitchen staff!" - RAI FILM Office

Get in touch

Get in touch with Watershed's friendly Events Team and we will be happy to answer your query, organise a show-round or give you a quote.

Please email: events@watershed.co.uk

Or call Watershed Events Team on 0117 927 2082

All profits from venue hires go to support Watershed, a values-led cultural organisation supporting talent and bringing artists and audiences together to fire up the imagination and build hope about the future.