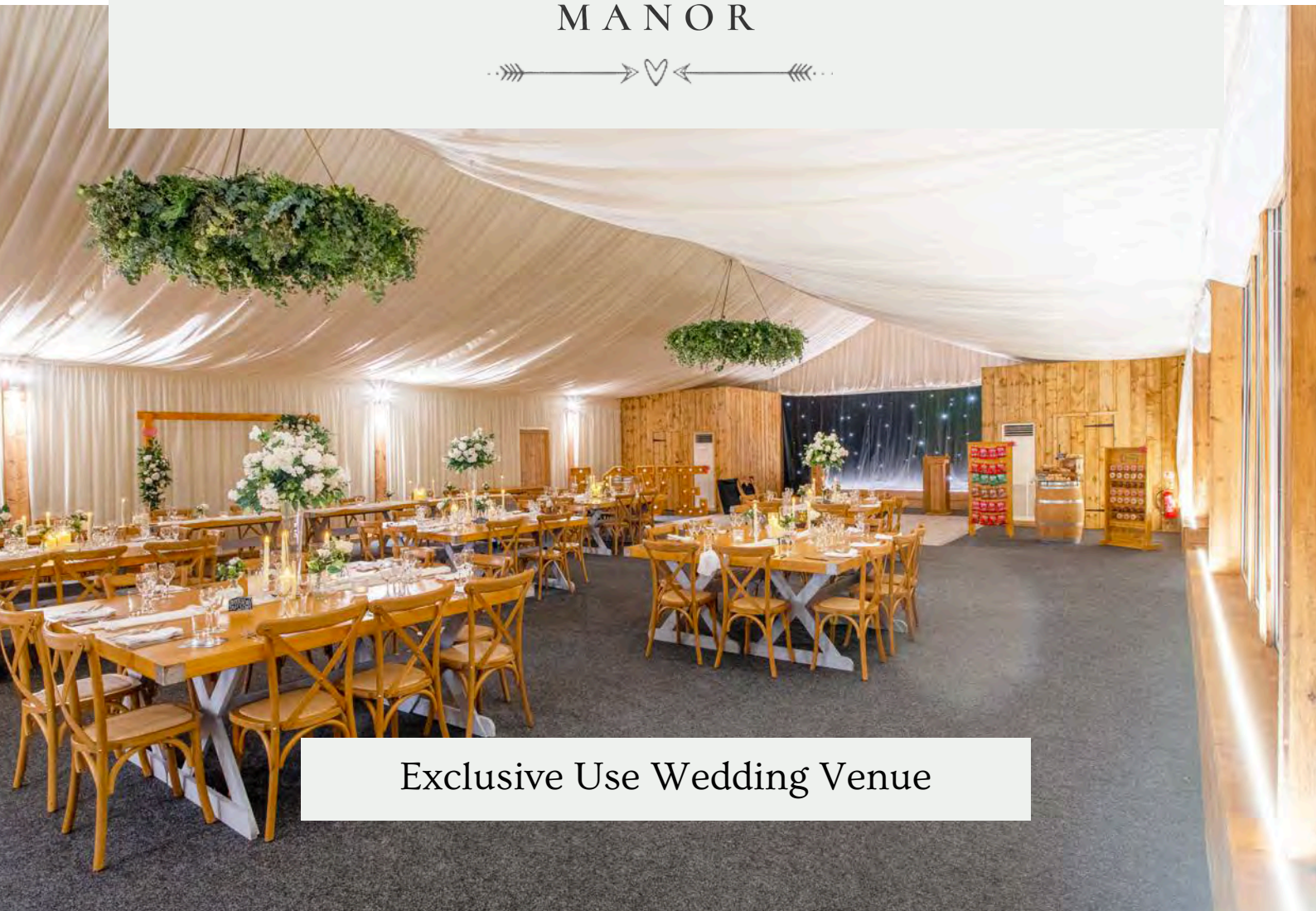


# PLUM PARK

MANOR



Exclusive Use Wedding Venue

# About THE VENUE



## VENUE FEATURES



- ✓ Exclusive Use
- ✓ Civil Ceremony Licence
- ✓ 2 Dressing Rooms
- ✓ In-House Catering
- ✓ Guest Accommodation
- ✓ In-House DJ
- ✓ Couples Access from 9am
- ✓ All Prices Include VAT
- ✓ Personal Wedding Manager
- ✓ Honeymoon Suite
- ✓ Outdoor Kitchen
- ✓ Dance Floor with Starlight Wall
- ✓ Licenced Bar Until Midnight
- ✓ Beautiful Gardens
- ✓ LED Marquee Uplighting
- ✓ Free WIFI
- ✓ Air Conditioned
- ✓ Car Parking

## SEE OUR AMAZING GOOGLE REVIEWS



“From seeing the venue for the first time and being blown away, and through the planning stage, the staff could not be more accommodating and helpful. I would highly recommend choosing Plum Park Manor for your wedding day! It was simply incredible in all areas and we couldn't have asked for a better day!”

Meg Bailey

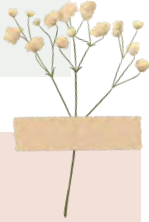


SCAN TO SEE  
OUR REVIEWS

# The morning OF YOUR WEDDING



Enjoy **exclusive early access to our spacious dressing room** from **9am** for you, your party, and your suppliers. **An extra dressing room is available on request.**



## Did You Know?

You can order **breakfast** and **drinks** to your dressing room while you get ready!



SCAN HERE TO  
SEE OUR MENU



We can accommodate up to **19 guests overnight** across **8 beautifully appointed bedrooms**, including our **romantic honeymoon suite**.

**A dedicated breakfast room is available for all overnight guests the following morning.**



# The Bars AND LOUNGE

Our dedicated bar area can be open from **midday until midnight**, ready to keep the drinks flowing from the first toast to the final dance.



WHAT WE SERVE



Premium spirits and mixers

A selection of cocktails

Fine wines and Champagne

Draught and bottled beers

Alcohol-free alternatives

Soft drinks and hot beverages



# The ORANGERY

CAPACITY



Up To 120 Guests

The Ceremony Room at Plum Park Manor which is licenced for civil ceremonies.



## Did You Know?

We can help style your ceremony room with **elegant chair drapes, table runner, and a dressed arch**, all available **in-house**.



SCAN HERE TO  
SEE OUR  
HIRING ITEMS



# The MARQUEE

## CAPACITY



Seated Meal: Up To 192 Guests

Evening Guests: Up To 200 Guests

Our beautiful marquee is **fully heated** and **air-conditioned**, ensuring comfort for you and your guests all year round. We offer **in-house catering only**, with menus crafted by our talented chefs.

To elevate your celebration, we also provide **DJ & entertainment packages**, **table décor options**, and **customisable lighting**, allowing you to tailor the space perfectly to your wedding vision.



## Did You Know?

You can elevate your marquee with our range of **finishing touches**, including **love letters**, **photo walls**, **lanterns**, **marquee lighting**, and even a **selfie station!**

Pair it with our **in-house table décor packages** for a beautifully styled setup that's ready to impress.



SCAN HERE TO  
SEE OUR HIRING  
ITEMS



# The GARDENS



## Did You Know?

Add a fun twist to your wedding with **fireside treats** and **garden games!**

Think toasted marshmallows, s'mores, and lawn games your guests will love.



SCAN HERE TO  
SEE OUR GARDEN  
HIRING ITEMS



# The Venue AT DUSK

As the sun sets, Plum Park Manor lights up with a cosy glow and the terrace starts to twinkle.

It's the perfect time to grab a bite from **the Outdoor Kitchen**, enjoy a drink, and soak up the evening vibes.



## Did You Know?

We offer **in-house DJ & Entertainment Packages** to keep your party going all night!

With custom playlists, lighting, and optional extras, we'll make sure your evening feels exactly how you imagined.



SCAN HERE TO  
SEE OUR  
ENTERTAINMENT  
EXTRAS



# Our FOOD & DRINK

SCAN HERE



TO VIEW OUR MENUS

What makes us truly unique is our exceptional in-house catering, with high-quality ingredients, bespoke menus, and unforgettable flavours prepared by our talented chefs.

Our tailored drinks service, from signature cocktails to personalised wine selections, ensures every celebration is distinctive and memorable.





# OUR PLANNING PROCESS

## VIEWING



# Our CONTACTS



We'd love to help you plan your perfect wedding at Plum Park Manor.

Whether you're ready to book a viewing, have questions about our packages, or just need some friendly advice, our team is here to help every step of the way.

## GET IN TOUCH WITH THE VENUE TEAM

01327 460 025

[enquiries@plumparkmanor.co.uk](mailto:enquiries@plumparkmanor.co.uk)

[www.plumparkmanor.co.uk](http://www.plumparkmanor.co.uk)



@plumparkmanor



- Towcester** – 2 miles
- Milton Keynes** – 10 miles
- Buckingham** – 10 miles
- Brackley** – 12 miles
- Northampton** – 12 miles
- Daventry** – 14 miles
- Banbury** – 21 miles
- Bedford** – 25 miles
- Rugby** – 25 miles
- Aylesbury** – 25 miles

**5K+** Weddings Hosted  
**20+** Years of Experience

A PART OF



THE GREAT BARN

ASHTON LODGE  
— COUNTRY HOUSE —

Milling Barn

REDHOUSE BARN