

# ROYAL GUNPOWDER MILLS



Photoshoots &  
Location Filming



# Welcome To The Royal Gunpowder Mills: A Versatile 170-Acre Filming Location

Set across 170 acres of diverse landscape, the Royal Gunpowder Mills is a proven, highly adaptable filming location with an excellent reputation within the industry.

Conveniently located just outside London and close to the M25, the site offers parking for more than 250 vehicles and can also be used for standalone unit basing and location parking.

Our distinctive grounds feature woodland, waterways, railway lines, and an extensive variety of listed and heritage buildings—ideal for industrial, natural, period, and international looks. Large interior set builds can be accommodated in our café and Spinks buildings.

## Key Facts & Facilities

### Parking & Utilities

- c.200 public and overflow parking spaces, with water and power
- Additional large hardstanding area in the core site suitable for unit basing
- Smaller hardstanding areas available near the Queens Mead

### Buildings & Interiors

- Grade I listed Mill on The Mead available as a green room
- 100-seat theatre
- Café with a fully equipped professional kitchen
- Tool workshop, boiler room, and multiple storage spaces

### Unique Features

- Narrow-gauge Gunpowder Railway with approximately 1km of track
- Extensive woodland, waterways, and heritage structures offering a wide range of visual styles



Map © OpenStreetMap contributors

Popular Locations (North)

Quinan Stove



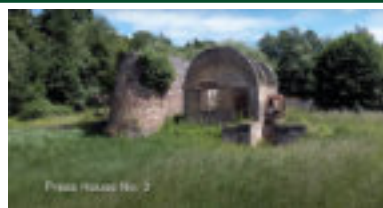
Newton's Pool



New Hill



Press House No 2



Grand Nitrator

Railway



Burning Ground

E Traverse



Burning Ground



Press House No 2



L109 Traverse



Wildlife Tower



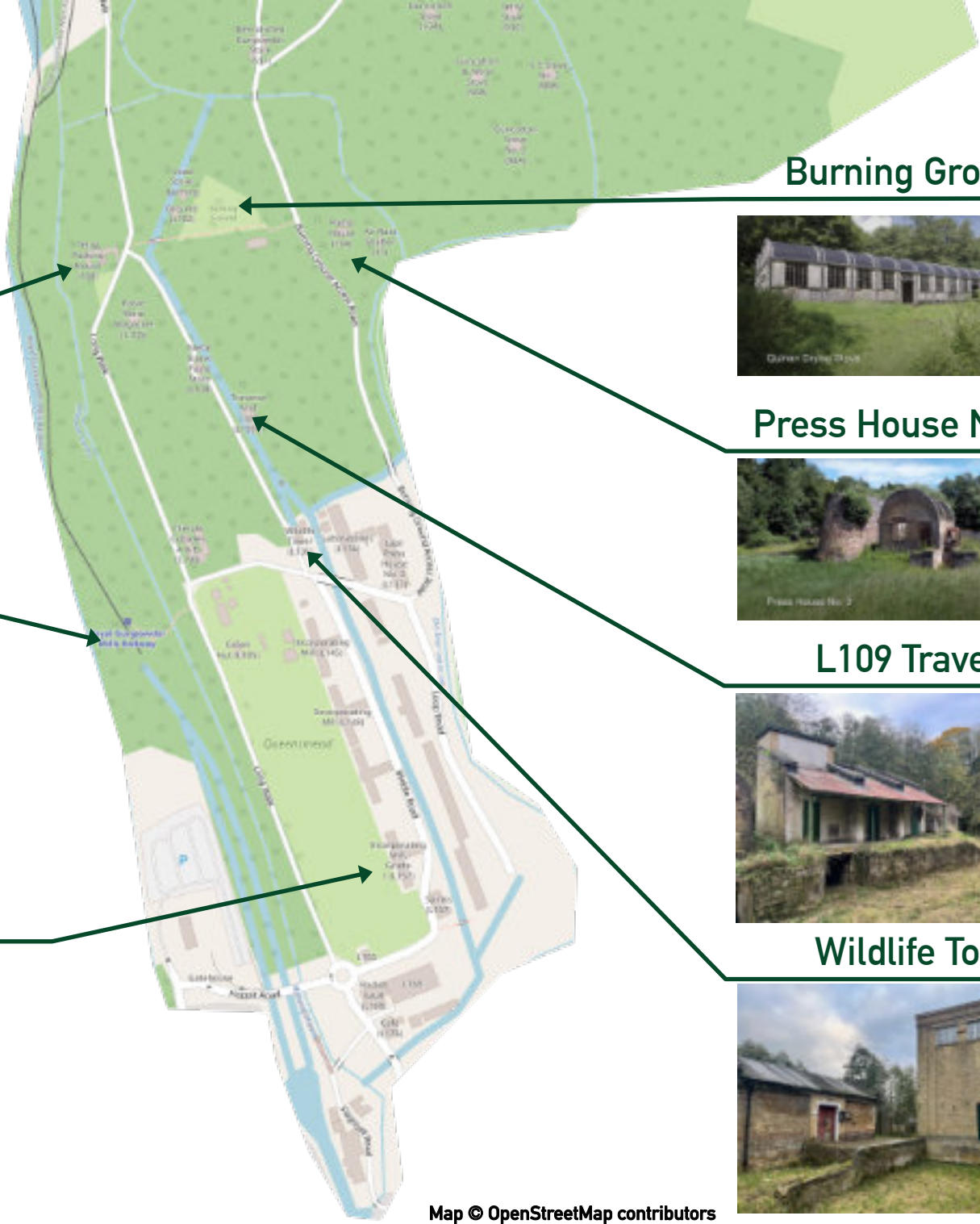
E Traverse



Railway

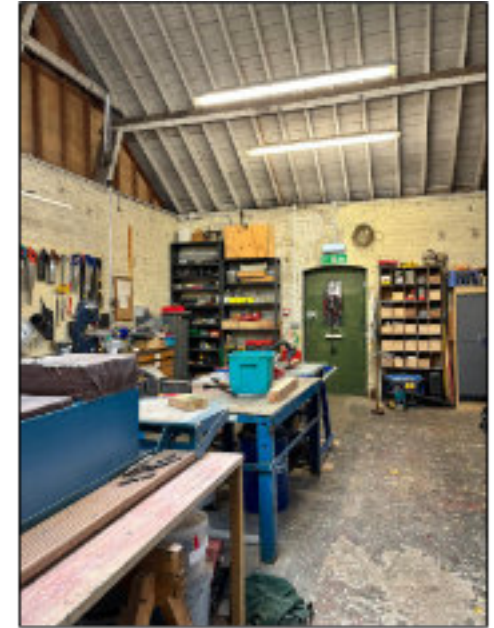


L157 Incorporating Mill

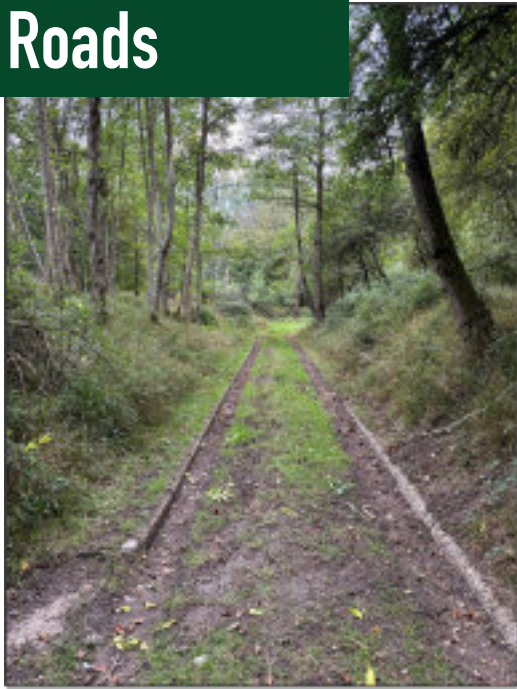


Map © OpenStreetMap contributors

# Interiors



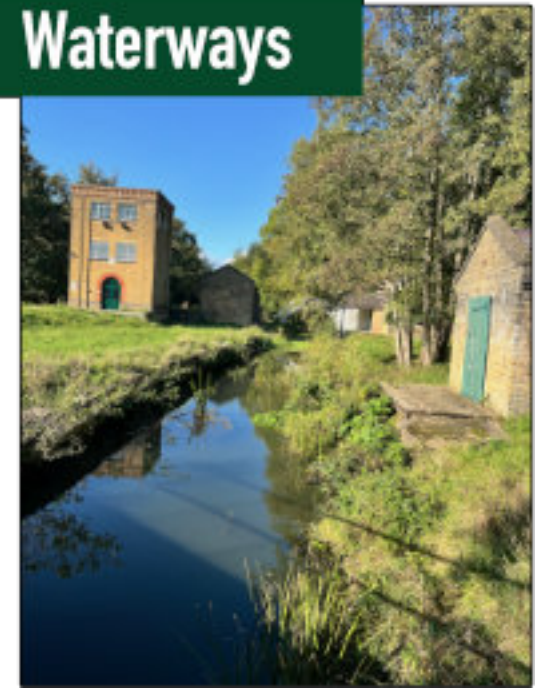
## Roads



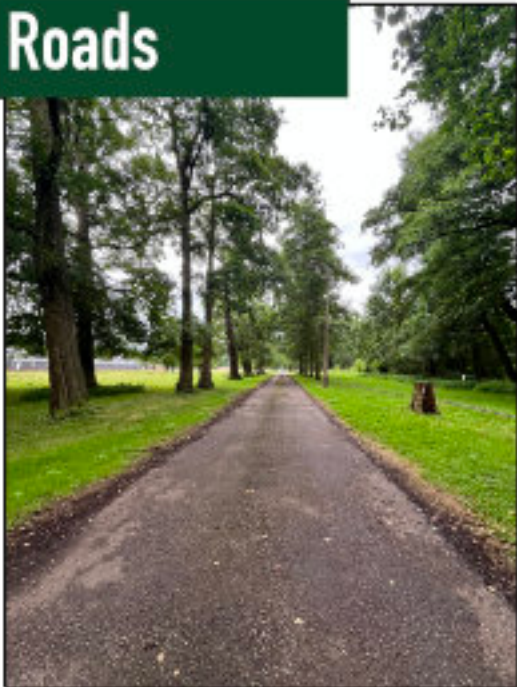
## Industrial Science



## Waterways



## Roads



## Waterways



## Railways





## Contact & Location Information

Conveniently located just outside London between J25 and J26 on the M25 Motorway, with easy access of rail and tube lines.

Email  
[julia.ryan@royalgunpowdermills.com](mailto:julia.ryan@royalgunpowdermills.com)

Telephone  
07990 513456

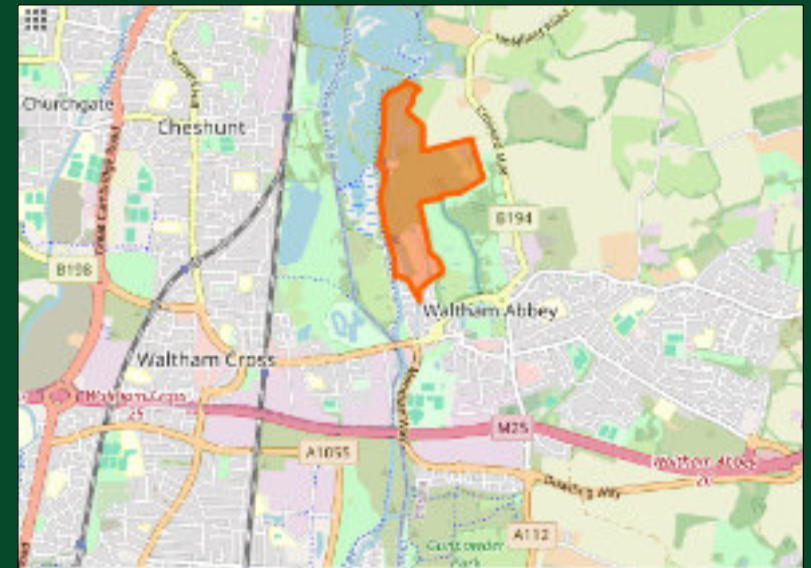
Website  
[www.royalgunpowdermills.com](http://www.royalgunpowdermills.com)



Address  
Beaulieu Drive  
Waltham Abbey  
Essex  
EN9 1JY

Rail  
Waltham Cross: 1.3 Miles

Tube  
Loughton (Central Line): 4.4 Miles



Map © OpenStreetMap contributors