



Petersham Nurseries

Private Events

— Richmond —

petershamnurseries.com





Welcome

A secluded haven in Richmond, London.

Petersham Nurseries is an enchanting location submerged in beautiful floristry and greenery. Our Greenhouses are magical destinations for celebrating special occasions. To ensure a captivating experience, all events are curated alongside our specialist team which include expert florists, our Michelin Green Star restaurant, sommeliers and events team.

From full venue hire to intimate workshops, our events team offers a fully bespoke experience for any occasion. Starting with an initial consultation, our events managers will help curate the right space for you.

Contents

| | |
|-------------------------|---------|
| Our Spaces | 5 |
| The Restaurant | 6 - 7 |
| The Central Greenhouse | 8 - 9 |
| The Garden Greenhouse | 10 - 11 |
| The Kitchen Garden Room | 12 - 13 |
| Sharing Menus | 14 - 17 |
| Afternoon Tea | 18 - 19 |
| Enhance your event | 20 - 21 |
| Gift List | 22 - 23 |
| FAQ's | 24 - 26 |
| Contact Us | 27 |





Our Spaces

Host your event within the enchanting atmosphere of one of our greenhouse spaces; brimming with fragrant bougainvillea and jasmine, surrounded by tree ferns.

A place to enjoy our seasonal sharing menus, inspired by our kitchen garden.

The greenhouses can be yours for a special occasion – providing a magical experience.

Each room will be dressed with large urns of seasonal flowers and we will have small bud vases and terracotta pots on the table.

You may also wish to book a private consultation with our in house floristry team, who would be delighted to bespoke your event with additional flower displays and foliage.

Whilst we do not have our own licence to hold wedding ceremonies here in Richmond, there are a number of stunning local registry offices we can recommend, such as York House or Orleans House Gallery based in Twickenham. It is a short walk or romantic boat ride to our nursery; a wonderfully magical way to begin your wedding celebration.

DAY HIRE

From 12pm to 5pm

EVENING HIRE

From 6pm to 11pm



The Restaurant

Our main restaurant is available for a private event, dining from our seasonal set sharing menu. Providing an enchanting atmosphere, your event guests will dine beneath a canopy of bougainvillea, vines and fragrant jasmine.

CAPACITY

Our restaurant can host between 60 and 120 guests seated.

DAY HIRE

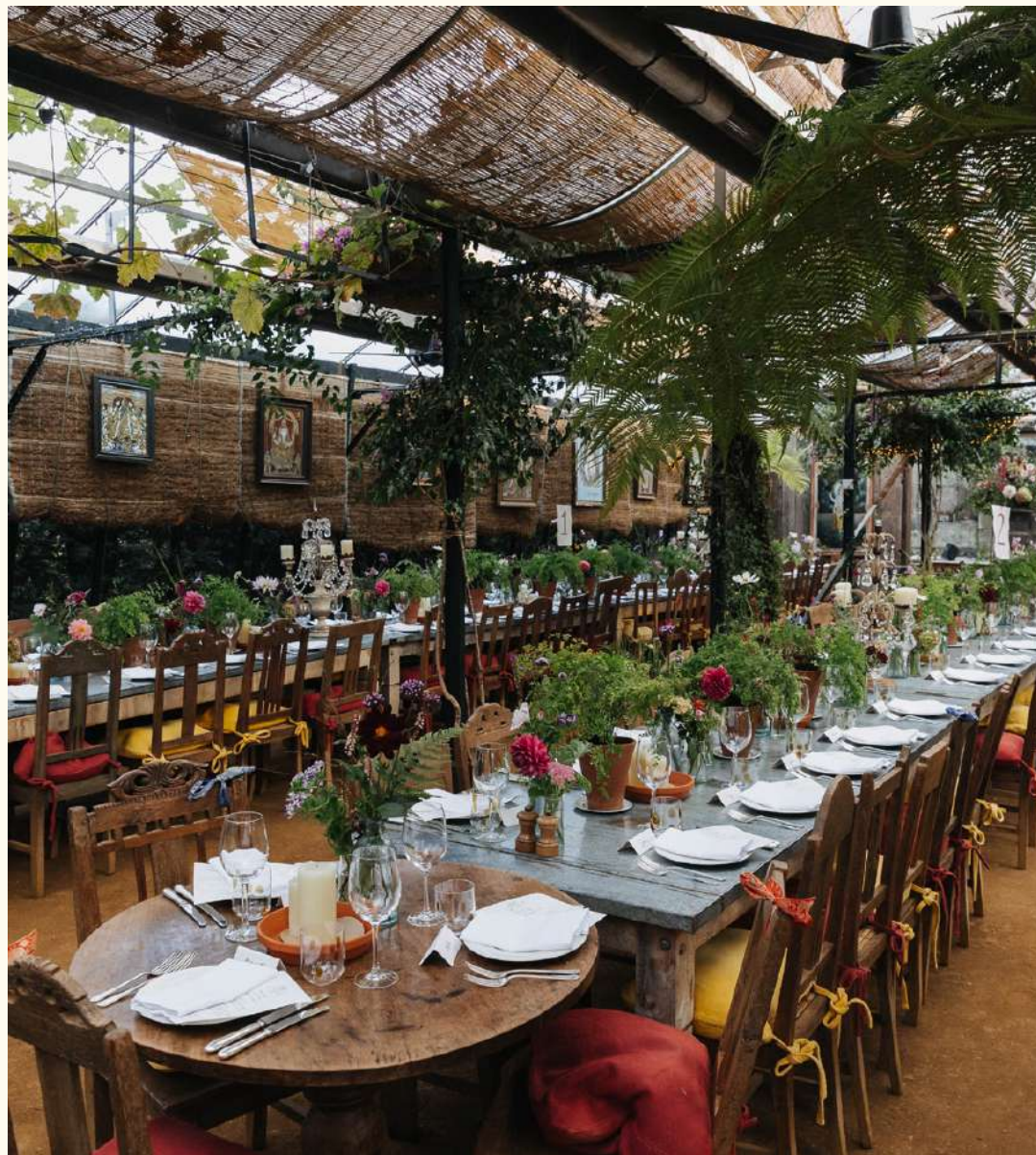
Tuesday & Wednesday £18,000

Thursday to Sunday £25,000

EVENING HIRE

Thursday to Saturday £25,000

Hire charge is inclusive of VAT.





The Central Greenhouse

Dine within our central greenhouse, surrounded by plants and flowers, a truly enchanting space that blurs the line between al fresco and indoor dining.

CAPACITY

The Central Greenhouse can host between 30 and 70 guests.

DAY HIRE

Tuesday to Wednesday £8,000
Thursday to Sunday £10,000

EVENING HIRE

Thursday to Friday £12,000
Saturday £15,000

Hire charge is inclusive of VAT.





The Garden Greenhouse

For a small and intimate occasion our garden greenhouse offers a tranquil and elegant setting. Nestled within our horticultural greenhouse and surrounded by seasonal flora, this is the perfect place for a leisurely lunch.

For a true reflection of the traditional tastes of the season, there is also the option for a private afternoon tea party.

The space also works perfectly for a boardroom meeting or discreet corporate event. Please enquire for earlier morning event bookings.

CAPACITY

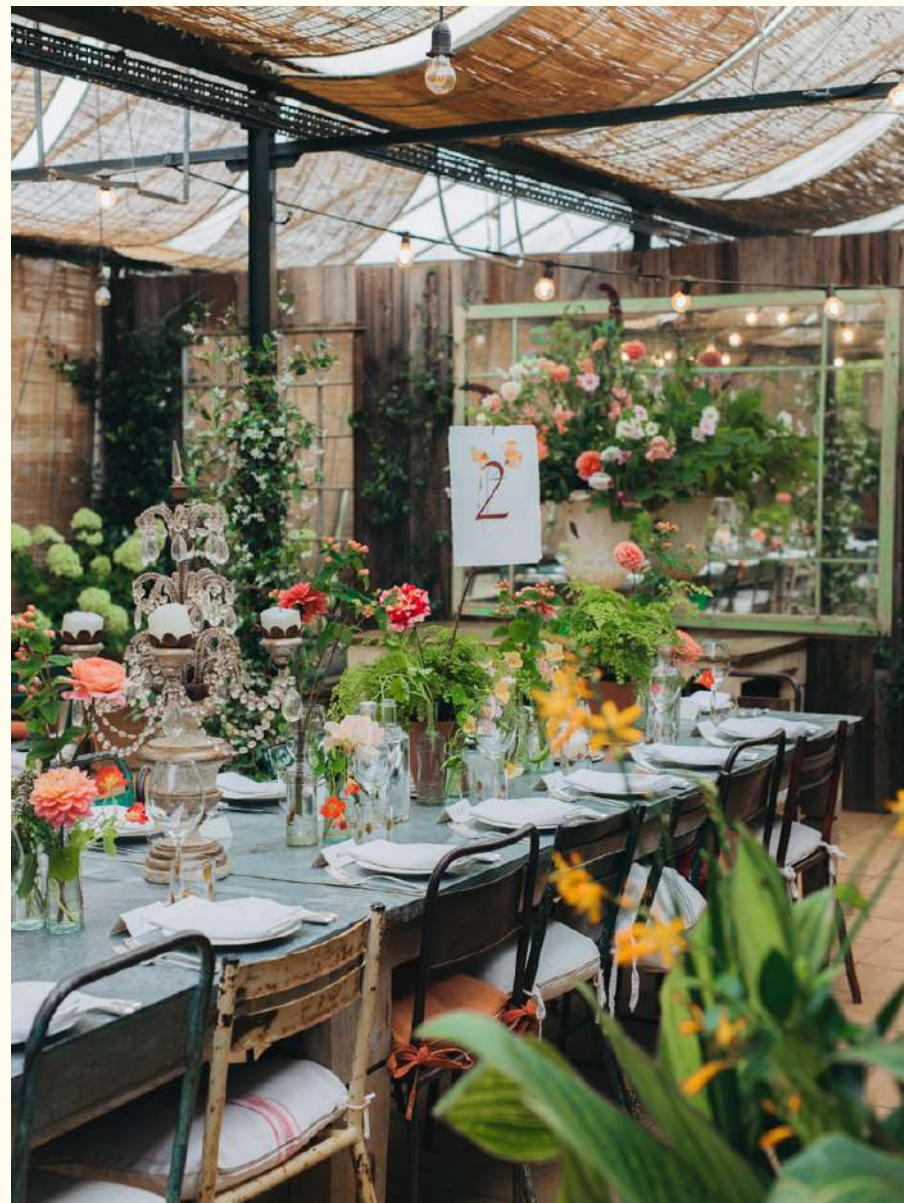
The Garden Greenhouse can host up to 44 guests seated.

DAY HIRE

Tuesday to Wednesday £4,000

Thursday to Sunday £5,000

Hire charge is inclusive of VAT.





The Kitchen Garden Room

For the exclusive use of our private events, we are opening our secluded greenhouse overlooking the beautiful kitchen garden. Guests will enter the greenhouse where arrival drinks and canapés will be served by the fire, before heading in to the adjoining room for an intimate lunch or dinner.

The space also works perfectly for a boardroom meeting or discreet corporate event. Please enquire for earlier morning event bookings.

CAPACITY

The Kitchen Garden Greenhouse can host up to 20 people seated.

DAY HIRE

Tuesday to Sunday £3,000

EVENING HIRE

Thursday to Saturday £4,000

Hire charge is inclusive of VAT.







Sharing Menu

Lunch £95 per person

Dinner £95 per person

For lunch and dinner, all guests must dine from our set sharing menu including canapes, starters, mains and desserts.

Our Head Chef will curate a sharing menu using the finest seasonal ingredients supplemented with vegetables, herbs and edible flowers from the kitchen garden of Petersham House.

Drinks from our wine list, charged on consumption, with the option to add a private consultation with our in house Sommelier.

We are proud to have been given a Green Michelin Star, a testament to our commitment in sustainability and following the slow food movement.

Please note our food and beverage costs are subject to 13.5% service charge.





Sample Set Menu

Canapes

Lettuce Cups, Fermented Cucumber, Toasted Seeds & Organic Yogurt
Bruschetta, San Marzano Tomatoes & Genovese Basil

Starters to Share

Gnocchi, Datterino & San Marzano, Friggiteli & Ricotta Salata
Torched Apricot with Whipped Ricotta, Honey, Almonds & Nasturtium

Mains to Share

Organic Haye Farm Beef, Lemon Pomme Puree,
Catalogna Chicory & Foraged Mushrooms
Grilled Monkfish with Puttanesca Tomatoes, Fennel & Sapphire
Roasted Cauliflower with Miso Cannellini Beans, Greens & Chimichurri

Desserts to Share

Amalfi Lemon Meringue Tart
Original Bean Chocolate Cremoso, Sour Cherry Gelato & Almond Crumble
Chef's Selection of Cheeses, Rosemary Crackers & Petersham Honey



Afternoon Tea

Brimming with delicacies that reflect our spirited style, and exuding romance and character, inspired by the natural world, host an Afternoon Tea event which departs from the traditional, engaging with new ideas to present an entirely different experience.

Escape the everyday routine and transport you and your guests to the perfect English country garden setting. Experience an Afternoon Tea like no other, for a true reflection of the traditional tastes of the season, in a wholly new Afternoon Tea occasion for your private event, available every Thursday, Friday, Saturday and Sunday.

THURSDAY, FRIDAY, SATURDAY & SUNDAY

£70pp with glass of Prosecco

THE KITCHEN GARDEN ROOM

Up to 20 guests

THE GARDEN GREENHOUSE

Up to 44 guests

Please note our food and beverage costs are subject to 13.5% service charge.





Garden Afternoon Tea

Sample Menu

Served with your choice of loose leaf tea
and a glass of Prosecco

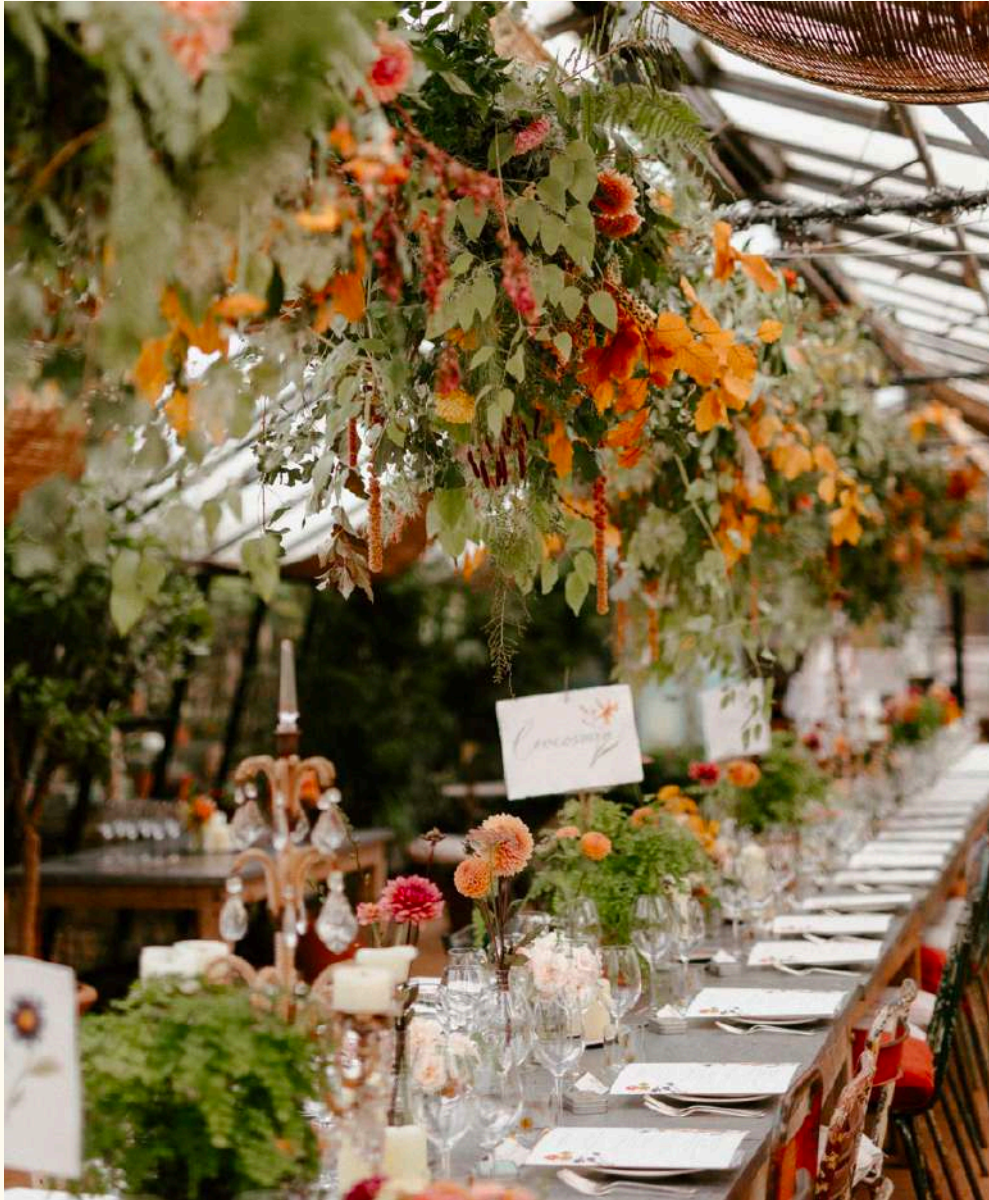
Savouries

Prosciutto Cotto & Piccalilli Sandwich
Egg Mayonnaise, Watercress & Spinach Loaf Sandwich
Smoked Herb Trout & Cream Cheese Sesame Puff
Savoury Vegetable Muffin
Poached Chicken, Roasted Herb Tomatoes on Toasted Brioche

Sweets

Orange & Chocolate Sacher Cake
Lemon Semolina Cake
Chocolate Pandoro Bread & Butter Slice
Matcha Fruit Strudel
Fruit & Plain Scones with Seasonal Jam & Cream





Floristry

To complement the natural beauty of Petersham Nurseries, all our private events are offered complimentary floristry and large urns of seasonal flowers and small bud vases or terracotta pots on table.

However, for larger displays, our florists are on hand to consult and create bespoke arrangements for your event. We can provide external floristry to flow throughout your day from ceremony to table. Using carefully selected and mainly British grown seasonal flowers, together with unusual specimens from our cutting garden.

Wild, colourful, romantic and dramatic floral arrangements, reflecting our distinctive style will complete your day.

Our floristry packages, including a private consultation, start from £1,000.

Gift List

Stunning pieces to compliment your garden and home.

Petersham Nurseries wedding and gift registry is available for all private events. Offering a completely personal and dedicated service that combines items from our homewares and garden shops. Lists can include bespoke linen, continuity items that are always on offer and one-off pieces of antique furniture, mirrors and chandeliers.





Mallorca

Can I bring my own decorations?

All floristry must be in-house, any other items are to be approved by our events team.

How late can my event continue until?

For lunchtime events, last drinks are served at 4.30pm with guests offsite by 5pm

For evening events, last drinks served at 10.30pm with all guests offsite by 11pm.

Is there a corkage charge?

Unfortunately, we do not offer corkage.

Must I secure my reservation for a private event?

Private hire reservations can only be confirmed once the full rental charge has been paid.

Can I have music at my event?

Unamplified music or an acoustic band may be permitted at the discretion of the events team.

Please discuss further with our Events Manager.

Can I park onsite?

We encourage all our guests to visit us by foot, bicycle or public transport where possible as parking on Church lane is extremely limited.

How many people does the largest table in the restaurant seat?

The largest table in our restaurant sits 20 people on a set menu.

Please discuss further with our Reservations Team, should you wish to book this table.

Can I have a dance floor?

We can't have any dancing or loud music onsite due to licensing restrictions.





Contact Us

We would be delighted to discuss your event, so please do contact us for more information and to book an appointment to meet with a member of our events team.

Events:

events.richmond@petershamnurseries.com

020 8940 5230

www.petershamnurseries.com

We look forward to welcoming you.





Petersham Nurseries

petershamnurseries.com
020 8940 5230