



Welcome to
Hart Shoreditch

Host Your Event with us

Introduction

Home to craftsmanship, Hart Shoreditch Hotel London, Curio Collection by Hilton draws inspiration from the area's rich industrial history, blended with elevated design.

Immerse yourself in the vibrant East London neighbourhood through bespoke and meaningful experiences.

1. About our Spaces
2. Mortise Suite
3. Tenon Suite
4. Mortise & Tenon Suite
5. BYRD Lounge
6. UBA Restaurant
7. Private Dining Room
8. Lobby Bar
9. 507 Suite
10. Capacity Overview
11. Accommodation

HART *Shoreditch*





Event and Meeting Spaces

With cutting-edge event spaces and authentic Pan-Asian cuisine, our hotel blends culture with contemporary style. Host your corporate or social gathering in one of our flexible meeting and event spaces, featuring a private bar and top-tier amenities.

HART *Shoreditch*

Mortise Suite

30 sq. m / Capacity 26 guests

A Crafty East London Gathering Spot

Host up to 26 guests standing or 10 boardroom-style in a space where history meets modern charm. With high ceilings, a relaxed yet refined vibe, and top-notch AV tech, it's perfect for big ideas – or a good old chinwag! Wrapped in soothing sage green, the room nods to East London's silk-weaving past.

[EXPLORE IN 3D](#)

HART *Shoreditch*





Tenon Suite

46 sq. m / Capacity 42 guests

Where Ideas Flow Freely

Host up to 42 guests standing or 16 in a boardroom layout. A relaxed yet sophisticated space for brainstorming and banter, with top-tier AV tech to keep things running smoothly. Inspired by 18th-century Huguenot townhouses, it blends timeless elegance with modern comfort for creative collaboration and productive discussions.



[EXPLORE IN 3D](#)

Mortise & Tenon Suite

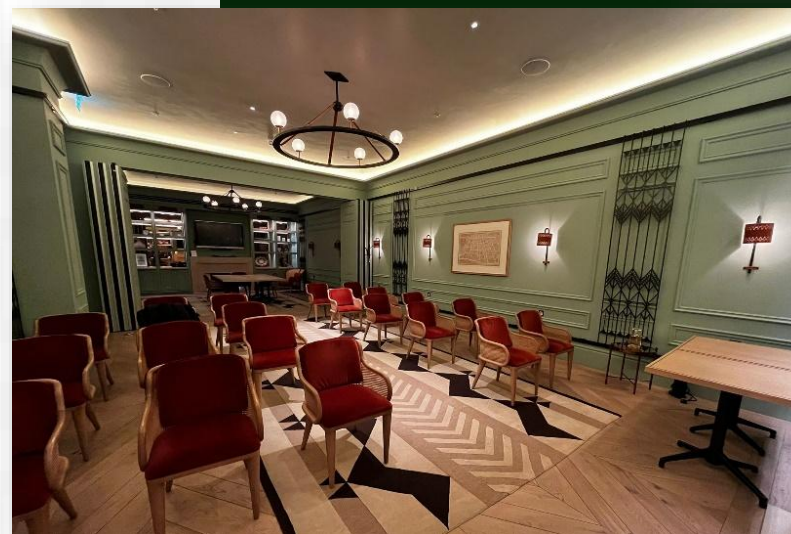
76 sq. m / Capacity 68 guests

Create More Space for Your Event

Host up to 68 guests in this spacious 80-square-meter room with high ceilings, offering a laid-back yet elegant vibe. Perfect for lively discussions or a good old chinwag, the space is equipped with cutting-edge audio and video technology to ensure your event runs seamlessly and keeps your guests engaged.

[EXPLORE IN 3D](#)

HART *Shoreditch*



BYRD Lounge

CAPACITY

Standing: up to 120

Seated: up to 75

Built for truly unforgettable gatherings **BYRD Lounge** is a stylish event space perfect for fashion shows, launches and screenings amongst many others. Hosting up to 120 guests, it offers flexible layouts, plush seating, a private bar, and surrounded by state-of-the-art AV.

Space Steeped in Creativity and Innovation.

An Event Space Where Creativity Meets Modern Sophistication.

HART *Shoreditch*





A Space as Versatile as Your Vision

Opulence with a Contemporary Edge

With swathe walls, floor-length curtains, and a bronzed backdrop, the lounge radiates glamour. Immersive screens, eight projectors, and wrap-around displays transform every event into a bespoke masterpiece.

A Space as Versatile as Your Vision

From multi-sensory dining to corporate events, BYRD Lounge adapts to any experience. With a private bar, kitchen, and UBA's exquisite Pan-Asian flavours, it's designed for visionaries and storytellers. Make your gathering unforgettable.

Explore [here](#)

HART *Shoreditch*

UBA Restaurant

Capacity 120 guests

Located within Hart Shoreditch, UBA offers a vibrant setting inspired by East Asian flavours and contemporary design – the perfect backdrop for private events, festive gatherings, and exclusive celebrations.

Available for full or partial buyouts, UBA can host seated dinners, standing receptions, or bespoke dining experiences tailored to your group. Our team will work with you to curate menus, cocktails, and entertainment that suit your occasion.



Private Dining Room

UBA restaurant

CAPACITY

Seated: up to 10 guests

Elegantly designed with a fusion of traditional and contemporary Asian features, UBA's private dining room offers the perfect ambiance to make your intimate event unforgettable



HART *Shoreditch*

Lobby Bar

Capacity 56 standing



The heart of Hart Shoreditch, our lobby bar blends contemporary design with a welcoming, creative atmosphere.

Perfect for informal gatherings, networking events, and community pop-ups, the space offers flexible seating, natural light, and a relaxed ambiance that encourages connection and conversation.

Ideal for: Community events, brand activations, networking sessions, or casual receptions

507 Suite

Capacity up to 10 seating

Located on the top floor of Hart Shoreditch, this spacious corner suite offers sweeping views of the iconic London skyline.

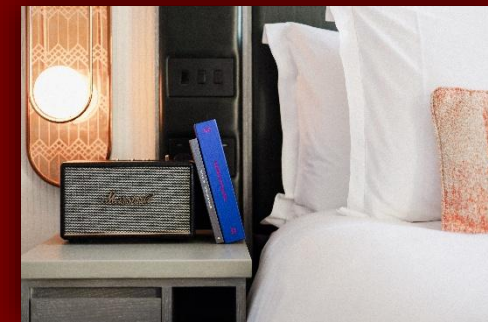
Ideal for private meetings, intimate gatherings, creative sessions or photoshoots, the suite features a generous living area with comfortable sofas and a dining table for up to six guests. Perfect for working, unwinding, or entertaining, with complimentary Wi-Fi and the privacy of your own space.



Capacity Overview

<i>Event Space</i>	Boardroom	Theatre	Cabaret	Banquet	Standing	Capacity
Mortise Suite	10	18	-	-	26	30 sqm
Tenon Suite	16	35	20	37	42	46 sqm
Mortise & Tenon Suite	34	65	40	60	68	76 sqm
Private Dining Room	10	-	-	-	-	22 sqm
BYRD Lounge	40	75	40	60	120	206 sqm
UBA Restaurant	-	-	-	60	120	293 sqm
Lobby Bar	-	-	-	-	56	50 sqm
507 Suite	6	10	-	-	10	28 sqm

Accommodation



Experience style and comfort in our 126 design-led guestrooms and suites, featuring sleek décor, HDTVs, Marshall speakers, and complimentary Wi-Fi. Enjoy Soapsmith toiletries, rain showers, in-room tea and coffee, curated books, and access to our state-of-the-art gym.

HART *Shoreditch*

BE A PART

Get In Touch with Hart
Email or call our friendly team with your questions and queries.

Email

HartShoreditch.Events@hilton.com

Call

+44 (0) 20 3995 3655

Visit

61 - 67 Great Eastern St,
London EC2A 3HU

Hartshoreditch.com

For Marketing and PR enquiry: lonsd_sm@hilton.com



HART *Shoreditch*