



The  
Little  
ORANGE  
Door

Events Pack 2026

# HELLO FROM THE FLATMATES

We are an award-winning bar and restaurant group that creates beautiful venues to make you feel like you're walking into someone's home, styling it on a fictional flatshare. We're best known for throwing weekly house parties, dinner parties and private events.

Our story started ten years ago when we began as a pop-up in Notting Hill. Since then, we've opened five amazing, permanent venues across London and won multiple awards, including Best Bar in London by *Tatler Magazine* and Best Bottomless Brunch by the *Evening Standard*. We're incredibly proud of what we have created and would love to show you around!

The Little Orange Door is based just a stone's throw from Clapham Common, the heart of South West London, and has become a local hot-spot for great house parties, date nights and weekend brunches. Here, we aim to create an authentic, homely, and unpretentious environment for guests to eat, drink and dance in the setting of an epic house party.

OUR HOUSE,  
YOUR PARTY!



"With top notch food, killer cocktails, silly games and free roam of their flat, this is the ultimate house party, and everyone's invited!"

- EVENING STANDARD

THE PUBLICAN  
AWARDS 2023

Nominee: Best  
Brand / Concept

## OUR FLAT

We are a 180 capacity fully licensed split-room late night bar and restaurant located by South London's leafy Clapham Common.

License (N.B. All days are available for private hire):

- Sunday to Wednesday: 12am
- Thursday: 1am
- Friday and Saturday: 2am



The Little Orange Door Resident DJ is available at extra cost.

Full venue hire is available on request.

### LIVING ROOM

Up to 60 seated or 120 standing

*Perfect for a homely cocktail party, this is the main thoroughfare of the venue so cannot be fully exclusive.*

### CONSERVATORY

Up to 26 seated or 45 standing

*With its own private entrance and bar, this is the perfect space to throw a dinner or drinks party.*

### GAMES ROOM

Up to 18 seated or 30 standing

*Your own private room just off the dance floor, filled with games for a fun gathering.*

### TERRACE

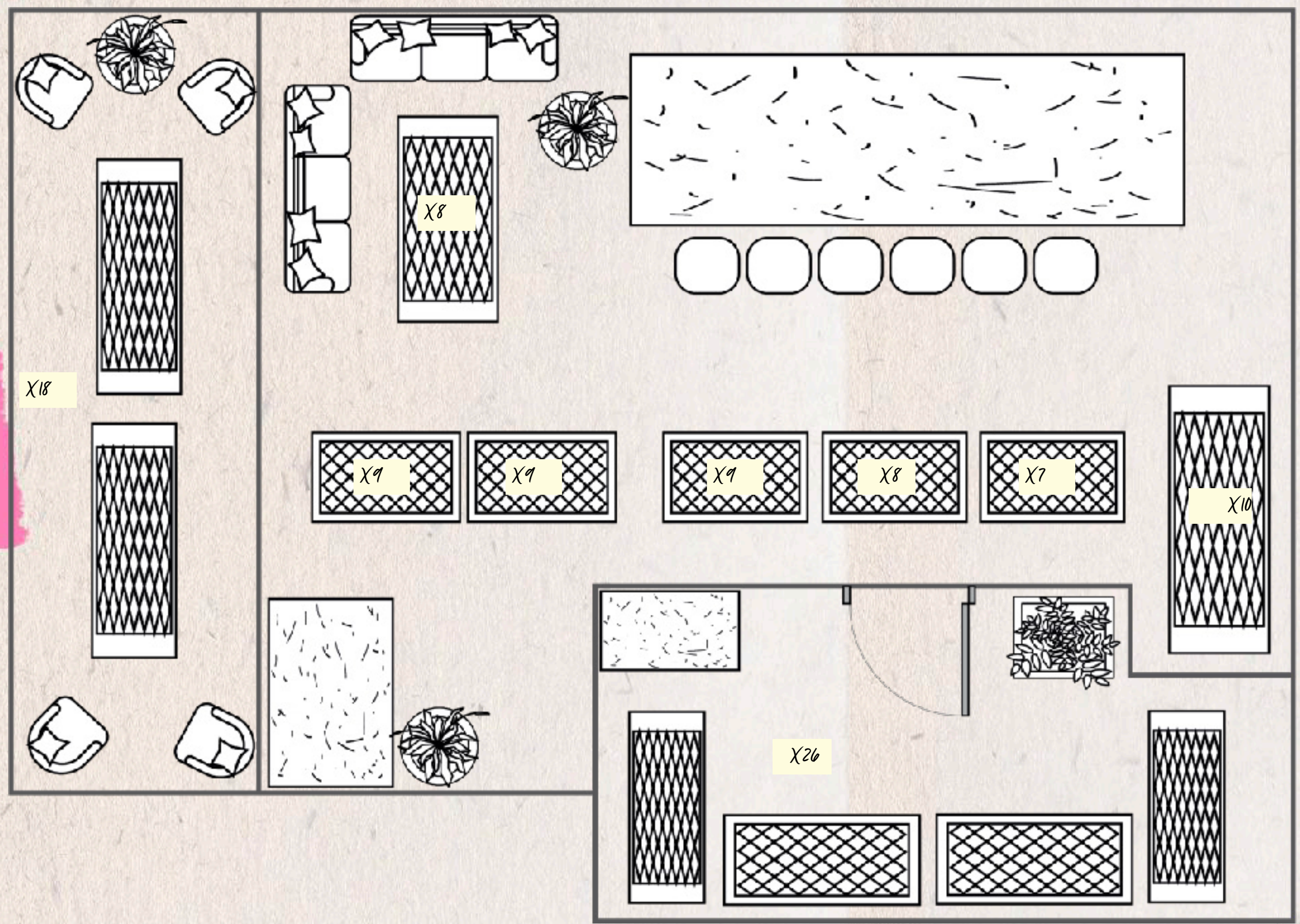
Up to 32 seated

*Sip cocktails and soak up the Clapham sun on our outdoor terrace. The terrace is not available for private hire.*

[CLICK HERE TO TAKE A LOOK AROUND!](#)



# FLOORPLAN



# LIVING ROOM



## OVERVIEW

Where all the best house parties happen. Sip cocktails by the fireplace, have midnight chats by the SMEG fridge or boogie the night away on the dance floor, our Living Room is the perfect party hangout. This area can only be hired privately until 9.30pm, or with a full venue private hire. We cannot guarantee full exclusivity as it is the main thoroughfare of the venue.

## FEATURES

Bar, comfy sofas, surround sound, full Pioneer DJ set-up (available with full hire only), PA and AUX connectivity and plenty of space to dance!

## LAYOUT

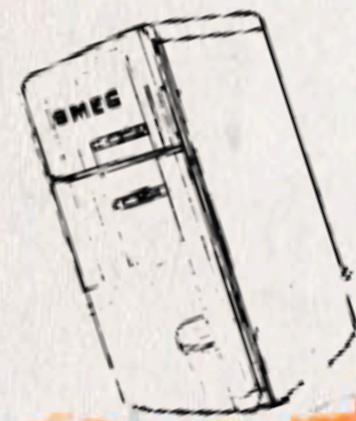
A bar styled as a kitchen with large breakfast table and a long cocktail bar. Open plan living room area with a fireplace, comfy chairs, sofas and coffee tables with low seating and a DJ station. Private dining is available on request.

## SIZE

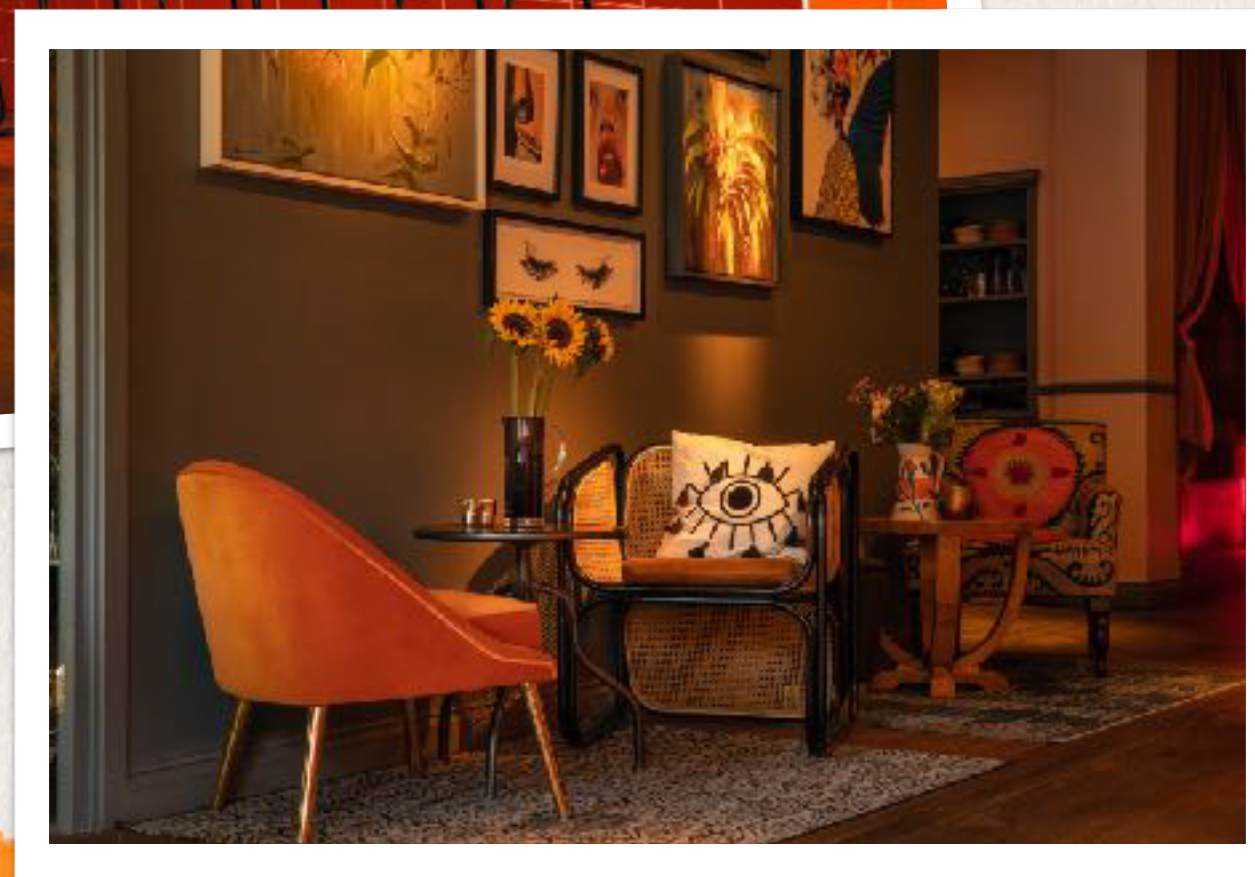
94.5m<sup>2</sup>

## CAPACITY

Up to 60 seated or 120 standing



# LIVING ROOM - FURTHER IMAGES



# CONSERVATORY



## OVERVIEW

Our botanically inspired Conservatory is the ultimate private hire spot, perfect for sit down dinners or standing canapé and cocktail parties. Complete with its own private entrance, plenty of seating, hanging pot plants, candle lit garden wall and your very own bar, this is the ultimate party spot for smaller to mid-sized groups, whatever the occasion.

## FEATURES

Private bar, long dining tables, private entrance with access to terrace.

## LAYOUT

Long tables for up to 30 seated and a private bar at the end. Table layout can be changed to accommodate standing groups.

## SIZE

33.3m<sup>2</sup>

## CAPACITY

Up to 26 seated or 45 standing



# GAMES ROOM



## OVERVIEW

The perfect setting for a smaller group, the Games Room is our quirky little hideaway. We've got all sorts of fun and games available to play throughout the evening - from board games to retro consoles and even a fancy dress box!

## FEATURES

Comfy sofas, plasma TV with HDMI, Marshall Amp fridge, fancy dress box, Nintendo 64 with Mario Kart and a variety of classic boardgames.

## LAYOUT

Two sofa areas with surrounding chairs and coffee tables. Can formally seat up to 20 on request.

## SIZE

16.5m<sup>2</sup>

## CAPACITY

Up to 18 seated or 30 standing



# TERRACE

## OVERVIEW

Set opposite the leafy Clapham Common, our beautiful terrace is the perfect space for summer catch ups and people watching over a few gin and tonics or Aperol Spritz.

## LAYOUT

Based outside the front of the venue, there are tables and chairs set up for small groups.

## CAPACITY

Up to 32 seated

The Terrace is included in full venue private hires and cannot be hired on its own.



# FOOD AND DRINK

All our menus are designed to compliment large groups coming together with sharing and bonding in mind. Expect an eclectic selection of delicious bar snacks, mouth-watering burgers and weekend brunches.

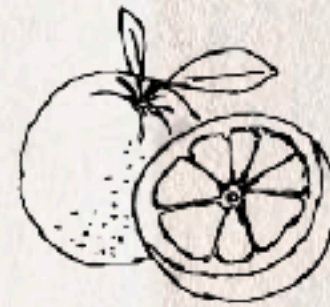
We also offer canapés, bowls and a private dining menu for special events.

Our cocktails are inspired by our DVD collection and are served in objects you may find lying around your house like vases, disco balls and even trophies!

FOOD MENU

DRINKS MENU

PRIVATE DINING MENU



# FOOD AND DRINK - FURTHER IMAGES





# ENQUIRIES

Click [here](#) to get in touch for rates and further info.

16A Clapham Common South Side  
London  
SW4 7AB  
020 4513 2429



Or check out our other venues:



FULHAM



SOHO



NOTTING HILL



SOHO

