



**RICH
MIX**

HIRE US

**UNIQUE EVENT SPACES
AND BOUTIQUE SCREENS**

EAST LONDON'S INDEPENDENT ARTS CENTRE



ABOUT US

We are Rich Mix. We welcome the communities of the world in East London to create, enjoy and share culture.

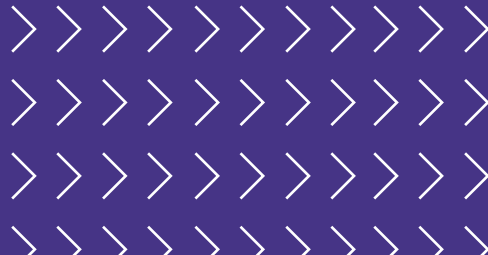
Located at 35-47 Bethnal Green Road in the heart of Shoreditch, we're home to a three-screen cinema, theatre, live music venue and creative hub.

As a charity, all our venue hire profits serve our core purpose; to deliver a diverse, ambitious cultural programme that supports new and emerging talent, and provide creative opportunities for our local communities.

PRIVATE HIRES

We offer a range of flexible, creative spaces and services at competitive rates. Whatever your ambition, we can make it happen.

Please see page 10 for our standard rates, or contact our Hires Team for a bespoke quotation.





THE STUDIO

A flexible theatre space, fully equipped with lighting rig, retractable seating, Wi-Fi capabilities and air conditioning. This space can be naturally lit.

Size: 220m²

Capacities: Standing 350 / Theatre Style 150 / Cabaret Style 100

Perfect for: Conferences / Parties / Exhibitions / Award Ceremonies



THE MIX

A modern, blank canvas designed with flexibility in mind - dress the space as you wish.

Features an in-built private bar which makes for a convenient break-out area or catering space. Plus, sound-proof doors, blackout blinds, Wi-Fi capabilities and air conditioning.

Size: 200m²

Capacities: Standing 200 / Theatre Style 120 / Cabaret Style 70

Perfect for: Exhibitions / Product Launches / Filming / Award Ceremonies / Breakfast Meetings / Parties

COLLABORATE WITH US ON CREATING YOUR EVENT



THE STAGE

Our dynamic main performance space. Includes a private bar, built-in stage, technical booth, lighting rig and projection facilities.

Size: 286m²

Capacity: Standing 370 / Theatre Style 180 / Cabaret Style 80

Perfect for: Conferences / Performances



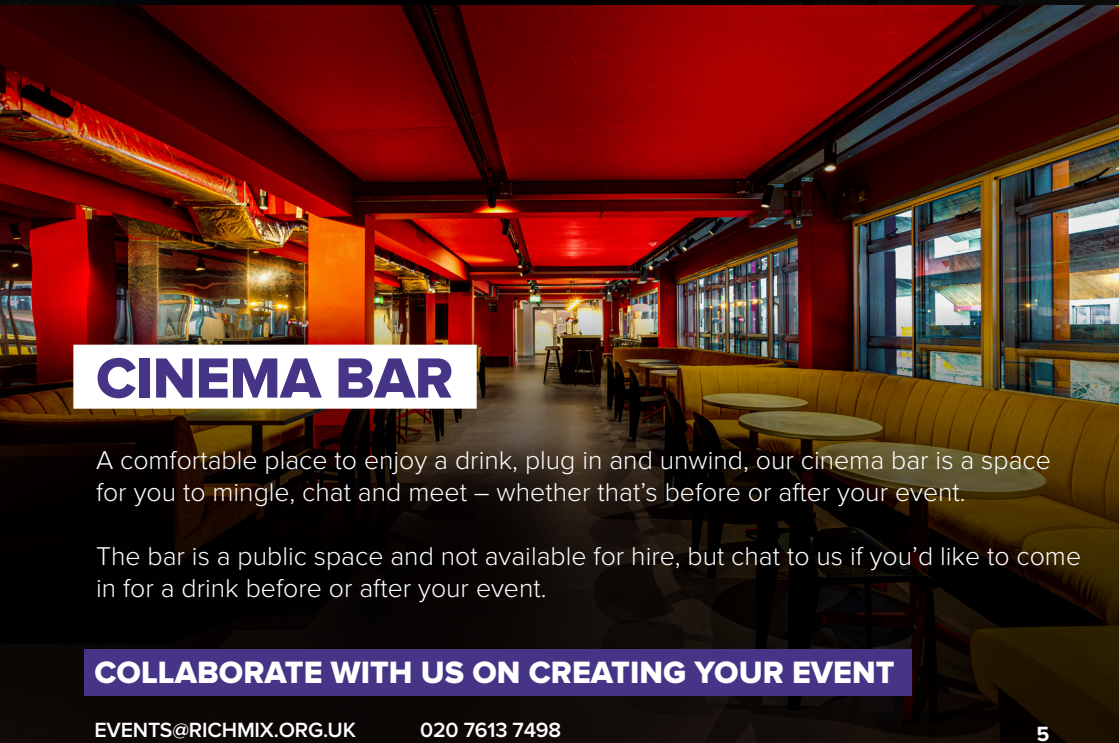
BOARDROOM

Hire our Boardroom meeting space at a competitive hourly rate. The room benefits from plenty of natural light and is equipped with a whiteboard and monitor. Flipcharts also available for hire. Meetings can be catered, from refreshments to lunches.

Size: 26m²

Capacity (seated): 20 (16 around the board table)

Perfect for: Meetings / Break-outs / Away-days



CINEMA BAR

A comfortable place to enjoy a drink, plug in and unwind, our cinema bar is a space for you to mingle, chat and meet – whether that's before or after your event.

The bar is a public space and not available for hire, but chat to us if you'd like to come in for a drink before or after your event.

COLLABORATE WITH US ON CREATING YOUR EVENT

CINEMA SCREENS

We have a three screen cinema showing a mix of the latest independent and blockbuster films, plus some of the world's best film festivals.

Each screen has a unique boutique design, making us one of the most attractive cinemas in London, with *Vogue* magazine voting us in their top ten.

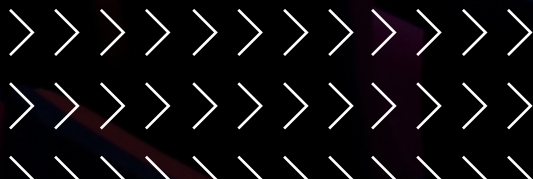
All three screens are licensed for weddings, boast the latest technology with 4k projectors and air-conditioning, and are available to hire for standalone events (including gaming) and screenings, or in conjunction with our other spaces.

SCREEN 1

Size: 200m²

Capacity (seated): 181 (plus 2 accessible bays)

Perfect for: Industry Screenings and Premieres / Private Screenings / Film Parties / Film Events / Proposals / Weddings





SCREEN 2

Size: 152m²

Capacity (seated): 132 (plus 2 accessible bays)

Perfect for: Industry Screenings and Premieres / Private Screenings / Film Parties / Film Events / Proposals / Weddings



SCREEN 3

Size: 103m²

Capacity (seated): 59 (plus 2 accessible bays)

Perfect for: Industry Screenings and Small Premieres / Private Screenings / Gaming / Student Screenings / Film Parties / Proposals / Weddings

COLLABORATE WITH US ON CREATING YOUR EVENT

EVENTS@RICHMIX.ORG.UK

020 7613 7498

STREETSIDE



Available until
March 2026

A versatile blank canvas space with high ceilings, a built-in bar unit and huge windows giving a stunning amount of natural light. Based on the ground floor, facing out to the centre of Shoreditch, there's plenty of exposure to pedestrians on the bustling Bethnal Green Road too.

Size: 142m²

Capacity: Standing 100 / Theatre Style 50

Perfect for: Pop-ups / Flash Retailing / Brand Activations / Immersive Experiences / Product Launches / Networking Receptions



REDCHURCH STREET WALLS

Overlooking Redchurch Street, our back walls offer a flexible canvas for you to get your message across to East London and beyond.

Located in a prominent location in the heart of Shoreditch, with a lot of pedestrian traffic and a wealth of cafes, bars and shops nearby.

COLLABORATE WITH US ON CREATING YOUR EVENT.

EVENTS@RICHMIX.ORG.UK

020 7613 7498

RATES

| SPACE | FEE exc. VAT (per hour) | | | | SIZE ² | MAX CAPACITY |
|--------------------------------------|--|------------------------|------------------------|--------------------------|-------------------|--------------|
| | DAY (before 6pm) | EVENING (after 6pm) | FULL DAY 9am to 5pm | DAY & EVE 9am to 12am | | |
| THE STUDIO | £200 p/h | £310 p/h | £1,500 | £2,800 | 220m ² | 350* |
| THE MIX | £180 p/h | £295 p/h | £1,325 | £2,675 | 200m ² | 200* |
| THE STUDIO AND THE MIX (combined) | £340 p/h | £510 p/h | - | £4,250 | 420m ² | Varies* |
| THE STAGE | £310 p/h | £200 p/h | £2,200 | £2,800 | 472m ² | 370* |
| BOARDROOM | £75 p/h | £75 p/h | £510 | - | 26m ² | 20 |
| STREETSIDE | £130 p/h | £130 p/h | £950 | £1,750 | 124m ² | 100 |
| CINEMAS (per hour) | 9am – 5pm | 5pm –11pm | FULL DAY 9am to 5pm | | | |
| SCREEN 1 | £565 p/h | £875 p/h | £3,600 | | 200m ² | 181 |
| SCREEN 2 | £465 p/h | £775 p/h | £2,800 | | 152m ² | 132 |
| SCREEN 3 | £365 p/h | £575 p/h | £2,200 | | 103m ² | 59 |
| OUTDOORS | For Redchurch Street Walls, please request a quote | | | | | |
| FULL VENUE TAKEOVER | Price on request | | | | | |

* Depending on the room set-up

ASK ABOUT OUR DISCOUNTED COMBINED ROOM RATES

PLEASE NOTE

- Room costs are based on a minimum 4-hour rate
- Cinema costs are based on a minimum 2-hour rate
- Hire of the Boardroom also includes the use of our monitor
- All Event Support Services are chargeable. Fees based on requirements.
- Space hire outside of standard times is by request and incurs an additional cost

EVENT SUPPORT

Our talented team offer a range of services to help create and facilitate your event.

MANAGEMENT

Our experienced hires team will manage your event journey from initial enquiry through to on-the-day delivery, with support from our excellent front-of-house team to ensure everything runs smoothly.

CATERING

Our tried and tested catering suppliers offer a delicious range of food styles to suit all tastes, from casual street-food to high-end cuisine.

TECHNICAL

We offer full technical support services to include public announcements (PA), audio visual (AV), sound and lighting. Our technicians can be on-hand to service all your event requirements.

Image credits in order of appearance:

Cinema wall paper © Rich Mix, 2018 /
Rich Mix features © Craig Gibson, 2018 /
Rich Mix internal and external spaces © Craig Gibson, 2018 /
Mezzanine Gallery © Rach Williams, 2017 /
Tom Misch street art in situ © Spotify, 2018

COLLABORATE WITH US ON CREATING YOUR EVENT.

EVENTS@RICHMIX.ORG.UK

020 7613 7498



RICH MIX

**WE ARE A CHARITY.
ALL THE MONEY WE MAKE FROM VENUE HIRES
SUPPORTS OUR MISSION.**

RICH MIX
35-47 BETHNAL GREEN ROAD
LONDON E1 6LA

WWW.RICHMIX.ORG.UK
[@RICHMIXLONDON](https://www.instagram.com/RICHMIXLONDON)
020 7613 7498



Registered Charity: 1089163