

N° **90** **BAR  
HIDEOUT  
LOCK**

---

**VENUE HIRE PACK**



N° 90 Lock

N° 90 Astrodeck

N° 90 Bar

The Mary Read Boat

N°90 Hideout

WICKED

2 FOR 1  
BURGERS  
THURSDAYS  
ALL DAY

MARY READ  
EVENT SPACE  
AVAILABLE FOR HIRE

WASH THE CAP

**Where East London's creativity lives loud.  
Independent and never standing still. Each  
room tells a story. Each space has a vibe.  
*One venue, many journeys.*  
canal-side bar, restaurant, events venue  
and canvas for the bold, the curious and  
those who shape their scene.**





N° 90 HIDEOUT



# N°90 Hideout

**Capacity: 500 Standing | 150 Seating**

Newly refurbished in 2025, N°90 Hideout is an intimate, modern event space designed for corporate parties with a sophisticated yet relaxed vibe.

Its warm wooden walls and striking chevron-patterned floor create a cozy, inviting atmosphere, while strategic lighting and high-quality sound systems add a professional touch. The space features modular tiered seating and versatile setups, making it ideal for presentations, networking, or casual mingling.

With a capacity of 300 guests, Number 90 Hideout offers a refined, contemporary setting that balances Hackney Wick's creative charm with the polish needed for corporate events. Perfect for a memorable gathering.

- 2,800sqft
- Ground floor
- Natural daylight and full blackout options
- Access to canal side covered terrace
- Bar
- Green room
- State of the art sound system
- Sound responsive lighting
- Easy loading access
- Disabled accessible



N° 90 LOCK



# Nº90 Lock

**Capacity: 650 Standing | 180 Seating**

---

No 90 Lock is a dynamic event space perfect for corporate parties with an edge. Spanning a spacious, open-plan area, it features high ceilings, a full room width balcony, bar, and modern geometric lighting that create a striking, contemporary vibe. With state-of-the-art sound and lighting systems, it's built for impactful presentations or lively entertainment.

The space also offers access to a scenic waterside terrace, adding an outdoor element for guests to enjoy. Ideal for groups of 100-650, No 90 Lock offers a versatile, urban backdrop that effortlessly blends East London cool with professional polish, ensuring your party stands out.

---

- 3,250sqfeet
- Ground floor
- Natural daylight and full blackout options
- Access to canalside covered terrace
- Bar
- Green room
- Balcony overlooking main floor
- State of the art sound system
- Audio responsive lighting
- Easy loading access



FLY SanMiguel

Nº 90 BOAT



# The Mary Read boat

**Capacity: 80 Standing | 30 Seating**

Anchored just outside the venue, the Mary Read Boat offers a unique and adaptable space for private events. With stunning views of the scenic canal, it provides an intimate setting perfect for celebrations.

Blending modern décor with versatile amenities, the boat features a private deck to soak up the outdoor vibes of East London. Inside, you'll find a private enclosed bar, an integrated PA system, and a DJ booth—perfect for transforming the space into a lively dance floor or a stylish networking hub.

Whether you're hosting a laid-back gathering or an exclusive party, the Mary Read Boat delivers an unforgettable experience on the water.

- 30ft canal boat with a flexible capacity
- for various occasions
- 80 people standing, including the rooftop space
- 30 seated indoors for dining and theatre style
- Private bar
- AV system
- DJ equipment available upon request for entertainment needs

N° 90

M P R & R M R

N° 90 BAR



# N°90 Bar

**Capacity: 550 Standing | 135 Seating**

At the heart of our venue, Number 90's main bar and restaurant offer a stylish and flexible space, perfect for celebrations.

Open to the public every day, the bar can also be booked exclusively for private events (subject to availability), providing a bespoke setting for everything from parties to corporate gatherings.



- 2,000sqft
- Ground floor
- Natural daylight and full blackout options
- Access to canalside covered terrace
- 2 Bars
- Full commercial kitchen
- State of the art sound system
- Bespoke murals and hand-crafted wooden decor
- Giant disco ball
- Disabled accessible



# N°90 TERRACE

---

The terrace is a 1,000 sq ft covered, canal-side outdoor space that provides an enchanting setting for receptions, parties, and social events. Fully covered and heated, it allows your event to run smoothly in any weather conditions. All private spaces have access to dedicated sections of the terrace, which can also be combined for a full venue takeover.

# Food & Drinks

## THE WAREHOUSE PACKAGE

- £35 per person up to 3 hours
- Welcome Prosecco
- House wines & beer
- Spirits & mixers behind the bar
- options to upgrade and lengthen service on request

## GOLD PACKAGE £750

- 75x Camden Hells Cans,
- 6x Bottles of Prosecco,
- 4x Bottles of House Wine

## SILVER PACKAGE £375

- 40x Camden Hells,
- 4x Bottles of Prosecco,
- 2x Bottles of House Wine

## BRONZE PACKAGE £220

- 25x Camden Hells
- 4x Bottles of Prosecco

\*\*\*please note all prices exclude VAT\*\*\*





Nº 90

ASTRODECK TERRACE



# Astro Deck Terrace

**Capacity: 60 Standing | 30 Seating.**

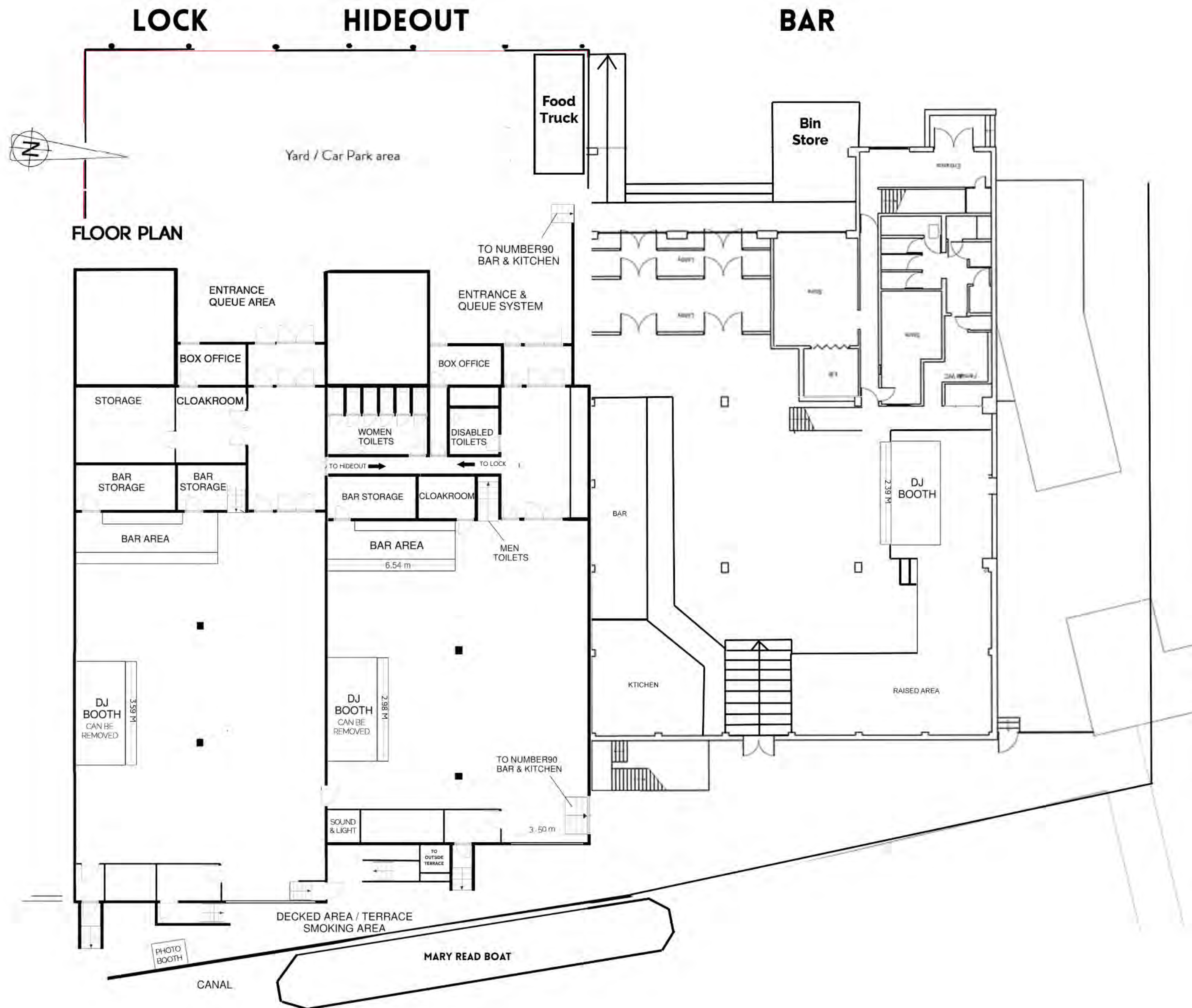
---

The Astro Deck Terrace is our newly refurbished semi-private portion of our canal-side terrace. This space has a standing capacity of 60 people with stunning views of the River Lea and your own personal server for the duration of the evening.

Should you wish to book the later end of the day once it reaches 22.00 you do not need to leave the space however it will no longer be sectioned off. You and your guests will be invited to join the party inside N° 90 Bar.

---

- covered canal-side terrace with stunning views of the river lea
- 60 people standing
- personal server
- 30 seated for dining



# Floor Plan



## FAQ'S

- External Catering- we love working with external food brands our Buy out fee is - £550
- Corkage Costs - We do this for wines & sparklings with- prices on request
- Hire Times - Standard Operating Hire times from 10am to 11:30pm, we are able to operate of these hours for an additional charge
- Parking - we have up to 9 spaces for designated parking but must be booked prior
- Licensing - covering Live events, Late night refreshment, Recorded Music
- Transport - Hackney Wick (3 mins) Stratford (10mins) Buses 55, and Liverpool Street 25mins
- Furniture - We have tables, benches, chesterfield sofas, folding chairs. Just ask
- Hot Drinks - We can do bottomless Teas, Herbal, Coffees or just an afternoon session
- Early Start? - We can do breakfast buffet's, snacks, pastries
- Damage Deposit - Between £500-£1000 card authorization, this does not leave your account unless damage to the venue or equipment has been discovered post event.
- Payment - Hire fee/Deposit must be paid to confirm your event, then 50% within 8 weeks or sooner and remaining within 14 days of the event or venue access will not be granted.

N° 90

**We're looking forward  
to hearing from you**

[hire@number90corporate.co.uk](mailto:hire@number90corporate.co.uk)