



ਗੁਰਮਤਿ ਕੀ ਭਾਵਨਾ ਸਦਾ ਸਾਡੇ ਮਨ ਵਿੱਚ ਰਹਿਣੀ ਚਾਹੀਦੀ ਹੈ।

## ELEVATE YOUR EVENT

At Gilgamesh, we reimagine the art of hosting extraordinary events. Our venue is a masterpiece of opulent aesthetics and intricate details, setting the stage for a wide range of occasions.

Spanning three intimate floors, Gilgamesh is the ideal choice for both grand receptions and intimate gatherings.

Whether you're organising a corporate function or a personal celebration, every corner of our space is meticulously designed to leave a lasting impact and create unforgettable memories.

ਗੁਰਮਤਿ ਕੀ ਭਾਵਨਾ ਸਦਾ ਸਾਡੇ ਮਨ ਵਿੱਚ ਰਹਿਣੀ ਚਾਹੀਦੀ ਹੈ।













## EVENT OPTIONS

Our dedicated team is committed to meeting your every need and event requirement, ensuring that your guests enjoy an exceptional and unforgettable experience.

We offer two broad options for Events at Gilgamesh London.

020 7494 4444 | [www.gilgamesh.com](http://www.gilgamesh.com) | [events@gilgamesh.com](mailto:events@gilgamesh.com)

### LARGE GROUP DINING

For groups of 10 or more, we offer seating in a combination of booths and tables in the restaurant across three floors on a non-exclusive basis. Our booths come in various sizes, with the largest single booth accommodating up to 10 guests subject to availability. Larger group bookings can be accommodated on a combination of booths next to each other.

We offer Sharing Set Menus starting at £65 per person including Vegan & Vegetarian options. If you have individual dietary and allergen requirements for guests we have alternative options on request.

You may also order quantities of additional dishes from our Ala Carte menu to be placed in the centre of each tables and shared.

Order drinks from a comprehensive Cocktail and Wine List while dining or pre-order for the table to begin. No minimum spend is required.

020 7494 4444 | [www.gilgamesh.com](http://www.gilgamesh.com) | [events@gilgamesh.com](mailto:events@gilgamesh.com)



020 7494 4444 | [www.gilgamesh.com](http://www.gilgamesh.com) | [events@gilgamesh.com](mailto:events@gilgamesh.com)

### EXCLUSIVE EVENT AREAS

Our venue, a masterpiece of opulent aesthetics and intricate details, offers a stunning backdrop, redefining exceptional events. With three intimate floors, it's perfect for grand receptions and intimate gatherings.

We offer three exclusive options for private use, suitable for both dining and receptions. From an Entire Venue Takeover or either of our unique areas, Zion, or Babylon individually, each offering its own unique ambiance and character. Exclusive event areas are subject to minimum spends which are made up of the food and beverage consumption.

Choosing an exclusive area allows for customisation of your event, including Dining or Canape menu selection alongside tailoring any Welcome Drinks or Event Bar with selections from an extensive Cocktail and Wine List. Each exclusive area also features its own bar, lighting, and sound system. There is no venue hire.

020 7494 4444 | [www.gilgamesh.com](http://www.gilgamesh.com) | [events@gilgamesh.com](mailto:events@gilgamesh.com)







# ZION

## A UTOPIAN OASIS



Zion, meaning Utopia, is situated on the upper level. Ascend to an area of lush exotic greenery, reminiscent of the Hanging Gardens of Babylon, adding an extra layer of enchantment to your visit. The surrounding foliage and atmosphere create a truly magical sanctuary.



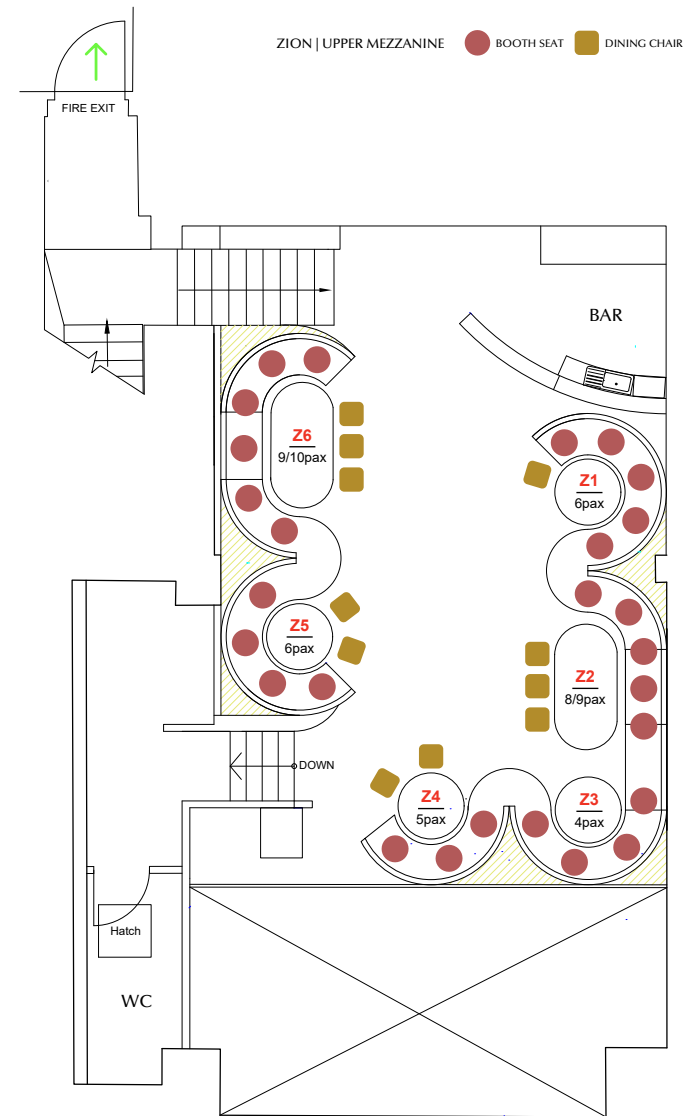
### CAPACITY

Seated Dining: 40 guests (+/-)

#### BOOTH DINING ON SET MENUS

Canape + Drinks Reception: 70 guests (+/-)

#### STANDING WITH OCCASIONAL BOOTH SEATING



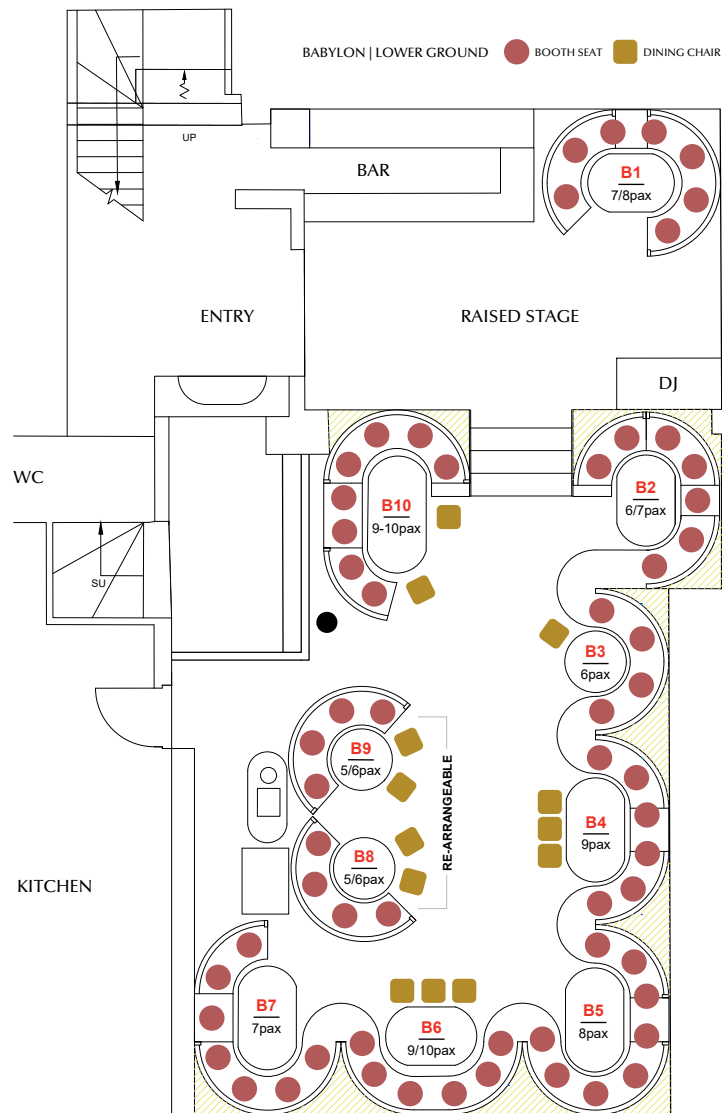


# BABYLON

LOWER GROUND







# BABYLON

## LUXURIOUS SPLENDOR AWAITS



Descend to Babylon, a City of Paradise adorned with luxurious splendour. Located on the lower ground, your senses will feast on an opulent blend of dark, intimate ambiance and harmonious cuisine. The mood is dark and sensual with intimate lighting setting the stage for wood-carved walls, intricate design, and sumptuous decor. Truly a feast for the eyes.



### CAPACITY

Seated Dining: 80 guests (+/-)

BOOTH DINING ON SET MENUS

Canape + Drinks Reception: 100 guests (+/-)

STANDING WITH OCCASIONAL BOOTH SEATING







# FULL VENUE TAKEOVER

## THE ULTIMATE STATEMENT

Experience the drama of a full venue takeover with our unique setting spread across three distinct areas. In our sumptuous dining spaces, intimate booths blend seamlessly with walls adorned in hand-carved wood and glistening bronze. Every detail is carefully crafted, from textured walls to soft, warm lighting, sumptuous velvets, tarnished metals, mirrored surfaces, and exquisite Gold Chinoiserie. An exclusive full venue takeover is across all three distinct areas of Gilgamesh, including the ground floor Lounge Bar.

Experience the drama of a full venue takeover with our unique setting spread across three distinct areas. In our sumptuous dining spaces, intimate booths blend seamlessly with walls adorned in hand-carved wood and glistening bronze. Every detail is carefully crafted, from textured walls to soft, warm lighting, sumptuous velvets, tarnished metals, mirrored surfaces, and exquisite Gold Chinoiserie. An exclusive full venue takeover is across all three distinct areas of Gilgamesh, including the ground floor Lounge Bar.

Experience the drama of a full venue takeover with our unique setting spread across three distinct areas. In our sumptuous dining spaces, intimate booths blend seamlessly with walls adorned in hand-carved wood and glistening bronze. Every detail is carefully crafted, from textured walls to soft, warm lighting, sumptuous velvets, tarnished metals, mirrored surfaces, and exquisite Gold Chinoiserie. An exclusive full venue takeover is across all three distinct areas of Gilgamesh, including the ground floor Lounge Bar.

## CAPACITY

Lounge Bar Seated Dining\*: 50 guests (+/-)

### BOOTH DINING ON SET MENU

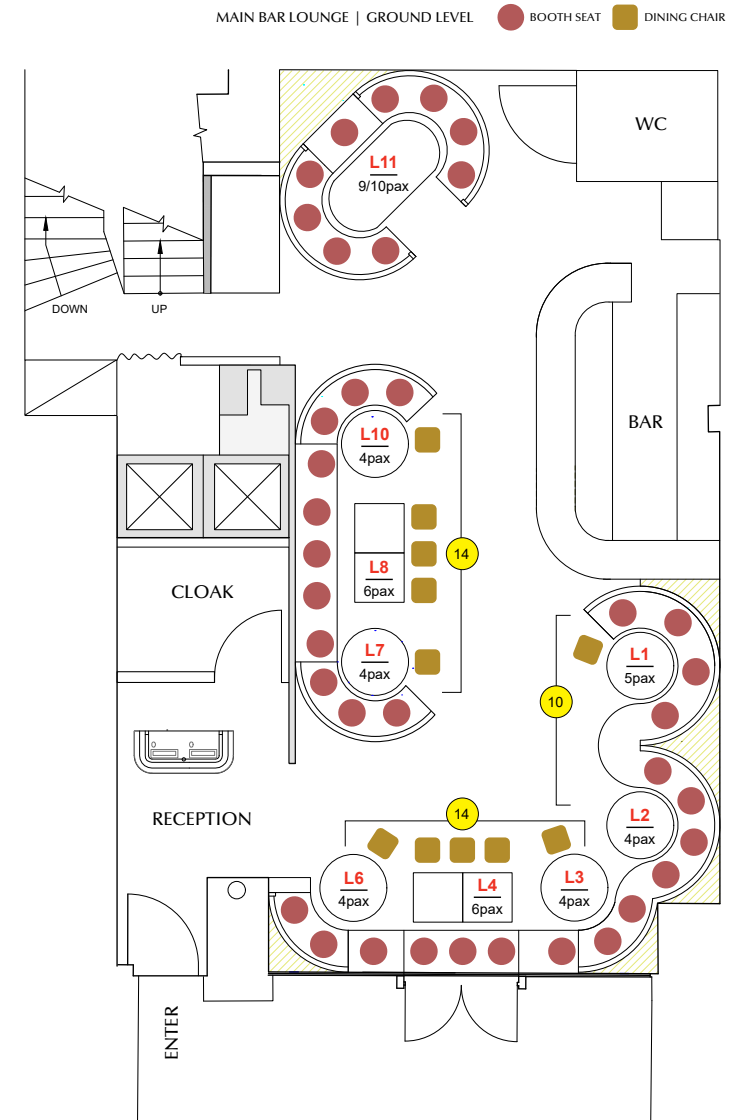
Full Venue Seated Dining: 160 guests (+/-)

### BOOTH DINING ON SET MENU

Canape + Drinks Reception: 250 guests (+/-)

### STANDING WITH OCCASIONAL BOOTH SEATING

\* Lounge only available with full venue takeover







በታችኛው ገጽ ላይ የሚገኙትን አገልግሎቶች ይመልከቱ።

## MENU SELECTION

Our menus are an Eastern gastronomy of delights. A harmonious fusion of flavours that embrace the diverse tastes of China, Japan, and Southeast Asia. Our talented chefs curate each seasonal menu using premium ingredients sourced from our trusted suppliers. Make selections from our specially curated event menus to suit your event requirements.

For dining, we encourage guests to follow the delightful Asian tradition of sharing. Start your culinary journey with a variety of colourful dim sum, sushi, and delectable small sharing plates through to our contemporary signature dishes. For receptions, we offer canape and bowl food selections.

Select any drinks or tailor your bar from our extensive Sommelier hand-picked Wine Selection and a carefully curated Cocktail List.

በታችኛው ገጽ ላይ የሚገኙትን አገልግሎቶች ይመልከቱ።







## TASTE OF GILGAMESH

### £65 SHARED SET MENU

#### GROUP DINING

Dishes placed in the centre of table to be shared banquet style. For all set menus, shared dishes will be allocated based on number of guests at each table. Always check with your server for specific allergies or intolerances so that we can tailor our offerings to accommodate.



Steamed Edamame, Sea Salt [VG][V]

#### SHARED STARTERS

Crispy Squid with Salt 'n Pepper, Chilli & Garlic [G]  
King Prawn Har Gau [G][N]  
Crispy Duck Spring Rolls [G]  
Salmon & Avocado Sushi Rolls [G - Soy Sauce on Side]

#### SHARED MAIN COURSE

Crispy Duck & Watermelon Salad, Cashew Nuts [G][N]  
Malaysian Chicken Curry  
Beef Rendang with Roti

All served with  
Steamed Jasmine Rice [VG][V]

Asian Greens [VG][V][G]

#### INDIVIDUAL DESSERT

Chef's Dessert Selection  
*Vegan, Dairy and Gluten free options upon request from your Server.*





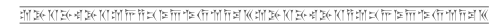


## TASTE OF GILGAMESH

£65 SHARED SET MENU | VEGETARIAN & VEGAN

### GROUP DINING

Dishes placed in the centre of table to be shared banquet style. For all set menus, shared dishes will be allocated based on number of Vegan & Vegetarian guests or at each table. An individual Vegan or Vegetarian guest will receive the full set menu. Always check with your server for specific allergies or intolerances so that we can tailor our offerings to accommodate.



Steamed Edamame, Sea Salt or Spicy

### SHARED STARTERS

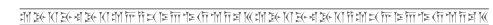
Vegetable Spring Roll  
Chive & Mushroom Dumpling [N]  
Crispy Kale Salad [N]

### MAIN COURSE

Malaysian Vegetable Curry  
All served with  
Steamed Jasmine Rice  
Asian Greens

### DESSERT

Chef's Dessert Selection  
*Vegan, Dairy and Gluten free options upon request from your Server.*



Suitable for [VG] Vegans [V] Vegetarians | Contains [G] Gluten [D] Dairy [N] Nuts





## BABYLONIAN BANQUET

### £85 SHARED SET MENU

#### GROUP DINING

Dishes placed in the centre of table to be shared banquet style. For all set menus, shared dishes will be allocated based on number of guests at each table. Always check with your server for specific allergies or intolerances so that we can tailor our offerings to accommodate.

---

Steamed Edamame, Sea Salt [VG][V]

#### STARTERS

Popcorn Shrimp in Miso Chipotle Mayo [G]

Wagyu Taco with Pineapple Salsa [G]

Yellowtail Jalapeno

Dim Sum Basket Selection [N][G]\*

*\*Check with your Server for specific intolerances.*

#### MAIN COURSE

Miso Chilean Seabass [G]

Malaysian Chicken Curry

Beef Rendang with Roti

All served with

Steamed Jasmine Rice [V]

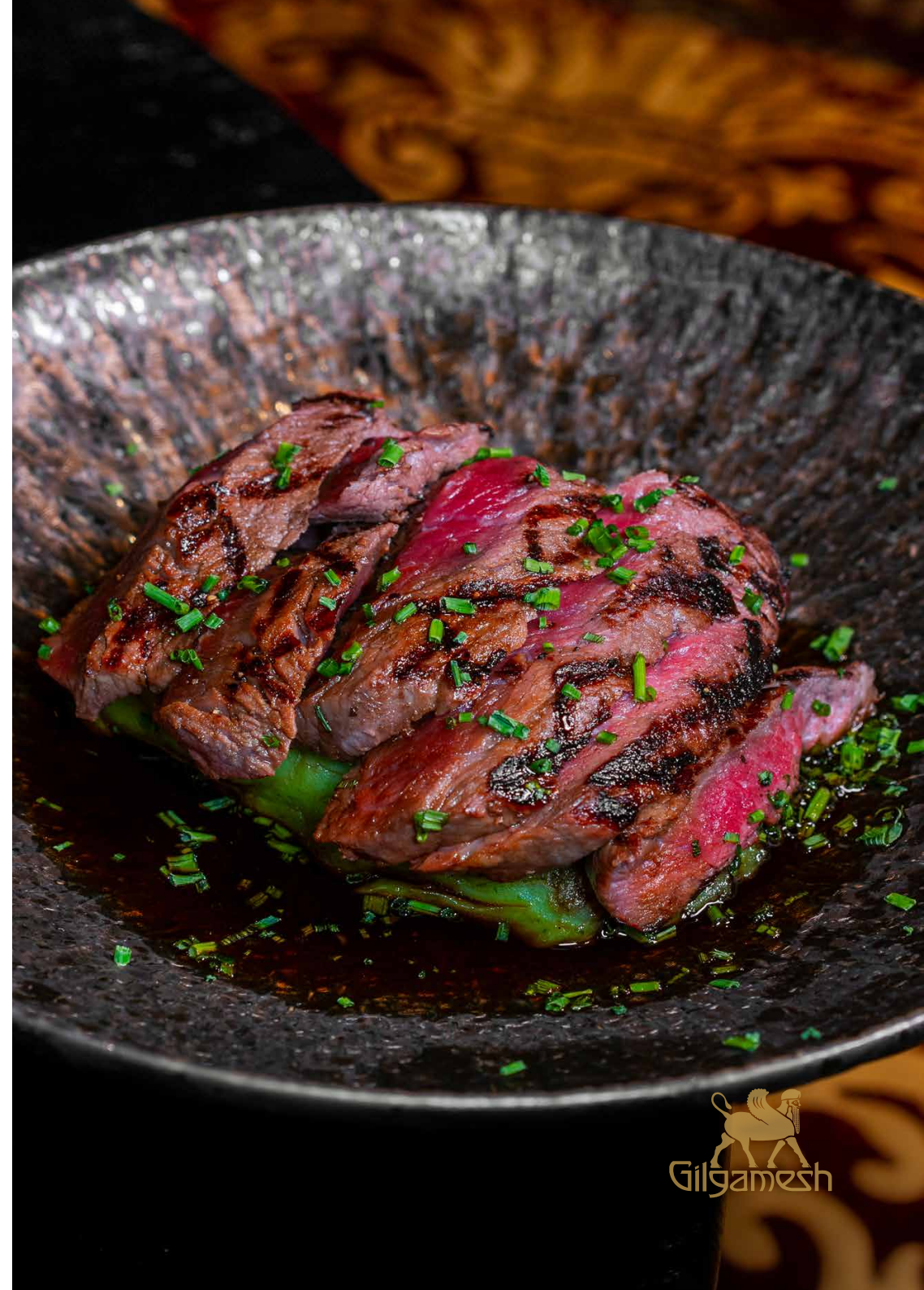
Asian Greens [G][D]

#### DESSERT

Chef's Dessert Selection

*Vegan, Dairy and Gluten free options upon request from your Server.*

---







## CANAPE MENU

**FROM £24 PER HEAD**

**All at £4 each Minimum 6 Choices per Person**

---

Edamame [V][VG]

Sesame Prawn Spring Rolls [G]

Prawn Har Gau Dumpling [N]

Garlic Chive Mushroom Dumpling [V][VG]

Wagyu Taco with Pineapple Salsa [G][N]

Crispy Duck Spring Rolls [G]

Chicken Siu Mai [G]

Vegetable Spring Rolls [V][VG]

Avocado Sushi Rolls [V][VG][G - Soy Sauce on Side]

Californian Inside Out Sushi Rolls [G - Soy Sauce on Side]

Salmon Avocado Sushi Rolls [G - Soy Sauce on Side]

---

Suitable for [VG] Vegans [V] Vegetarians | Contains [G] Gluten [D] Dairy [N] Nuts

\* Sample Menu. All menus inc. VAT exclude Service Charge at 15%





## BOWL FOOD

FROM £7 each



- Crispy Squid with Salt 'n Pepper [G]
- Duck & Watermelon with Cashew Nuts and Sweet Fish Sauce [G][N]
- Fillet of Beef on Chive Mash with Sweet Soy Glaze [G][D]
- Crispy Chilli Tofu & Yellow Bean Sauce, Ong Choi [G]
- Vegetarian Singapore Noodles [G][V][VG]
- Asian Fish & Chips
- Gilgamesh Rice (Prawn, Crab) [G]
- Vegetable Fried Rice [V][VG]
- Green Chicken Curry
- Green Vegetable & Lychee Curry [V][VG]
- Kale, Crispy Tofu Salad [V][VG]



\* Sample Menu. All menus inc. VAT exclude Service Charge at 15%

Suitable for [VG] Vegans [V] Vegetarians | Contains [G] Gluten [D] Dairy [N] Nuts







## EVENT BAR

We can tailor any Event Bar to your requirements including Welcome Drinks, Standard House Bar or an Open Cash Bar all based on consumption. Choose from from an extensive Cocktail and Wine list. House drink guideline prices are listed.

## HOUSE DRINKS



<b>COCKTAILS</b>	From £14
<b>WINE</b>	From £32
<b>SPARKLING</b>	From £38
<b>CHAMPAGNE</b>	From £90
<b>BEER BOTTLE [330ml]</b>	From £6
<b>SPIRIT [50ml]</b>	From £12
<b>BOTTLED SPIRITS</b>	From £180



\*\* REFER TO FULL WINE & COCKTAIL LIST FOR TAILORED SELCTIONS \*\*









## CONTACT

[events@gilgameshlondon.co.uk](mailto:events@gilgameshlondon.co.uk)

<https://gilgameshlondon.co.uk>



[@gilgamesh.ldn](https://www.instagram.com/gilgamesh.ldn)