

# Conferences and events

Meet. Connect. Inspire.



UNIVERSITY OF  
BIRMINGHAM

Edgbaston Park Hotel  
& Conference Centre

We connect  
We activate

[edgbastonparkhotel.com](http://edgbastonparkhotel.com)



EDGBASTON PARK HOTEL  
AND CONFERENCE CENTRE

# Where great minds meet

---

With cutting-edge conference spaces including impressive modern suites, bedrooms, restaurant and bar, and two quintessentially English historic houses, you'll find everything you need on site.

We're owned by the University of Birmingham, nestled in leafy Edgbaston and just a few minutes from Birmingham city centre.

Our friendly, experienced team is ready to give you a warm welcome.

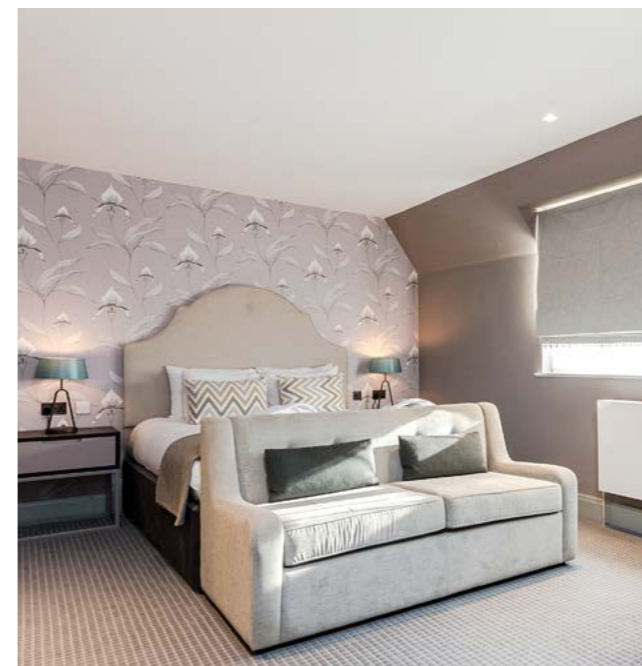
# Our facilities

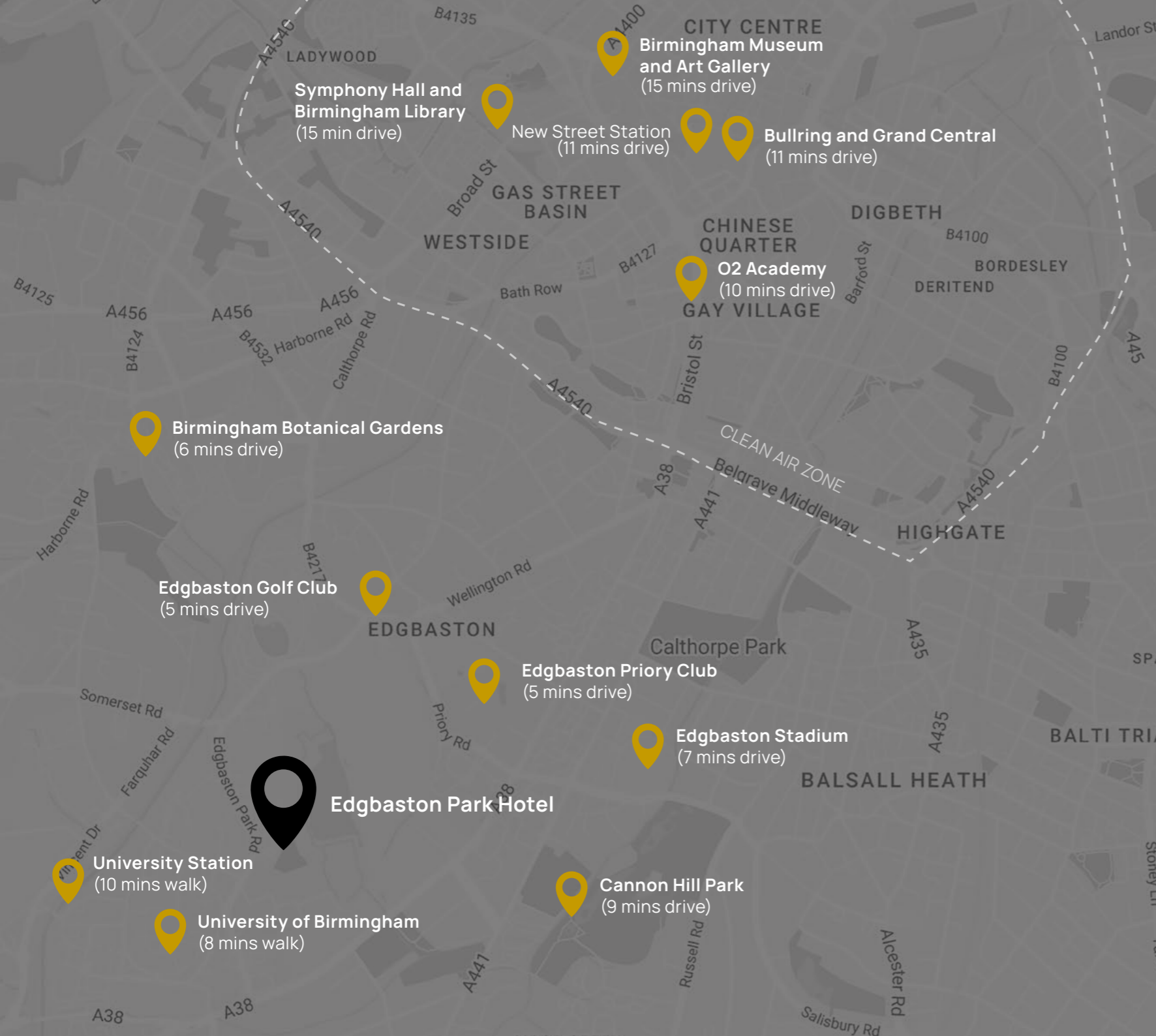
---

The hotel comprises 185 bedrooms and three serviced apartments. There are numerous well-positioned conference rooms catering for up to 240 delegates. Dine in our stunning open-plan restaurant and relax in our stylish bar, which serves a wide range of beers, wines, and spirits as well as vegan and non-alcoholic tipples.

There is complimentary car parking with electric car charging points, and the hotel sits outside Birmingham's clean air zone.

The main hotel building includes the large Fry Suite and a variety of flexible conference rooms and break-out spaces. Events can also be staged in the historic Hornton Grange, with its charming and airy sky-lit extension, and Grade II-listed Garth House, which is perfect for more private occasions.





**Symphony Hall and Birmingham Library**  
(15 min drive)

**New Street Station**  
(11 mins drive)

**Birmingham Museum and Art Gallery**  
(15 mins drive)

**Bullring and Grand Central**  
(11 mins drive)

**O2 Academy**  
(10 mins drive)

**Birmingham Botanical Gardens**  
(6 mins drive)

**Edgbaston Golf Club**  
(5 mins drive)

**Edgbaston Priory Club**  
(5 mins drive)

**Edgbaston Stadium**  
(7 mins drive)

**Edgbaston Park Hotel**

**University Station**  
(10 mins walk)

**University of Birmingham**  
(8 mins walk)

**Cannon Hill Park**  
(9 mins drive)

# The perfect setting

The hotel is set with a semi-suburban location just two miles from Birmingham city centre and is accessible by road, rail and air.

On the edge of the University of Birmingham campus, it's in very easy walking distance from the historic Winterbourne House and Garden, Barber Institute of Fine Arts, Lapworth Museum and The Bramall concert venue.



# The perfect setting

Our hotel complex has everything you could need to enjoy your stay.

- 1** Hotel Complex
- 2** Conference Centre
- 3** 1900 Restaurant & Bar
- 4** Grade II-listed Garth House
- 5** Hornton Grange
- 6** Peter Scott House
- 7** Garth House grounds
- 8** Free parking
- 9** Overflow multi-storey car park
- 10** Terraced dining
- 11** Extensive grounds





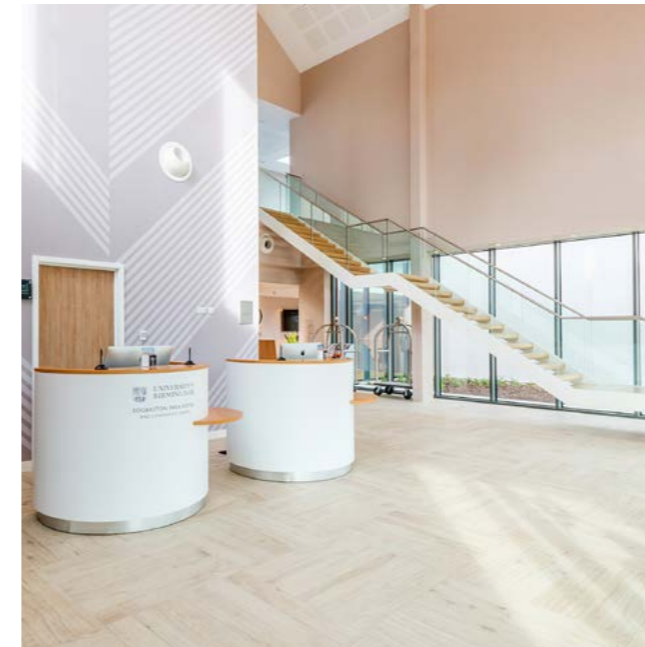
## Built with purpose

---

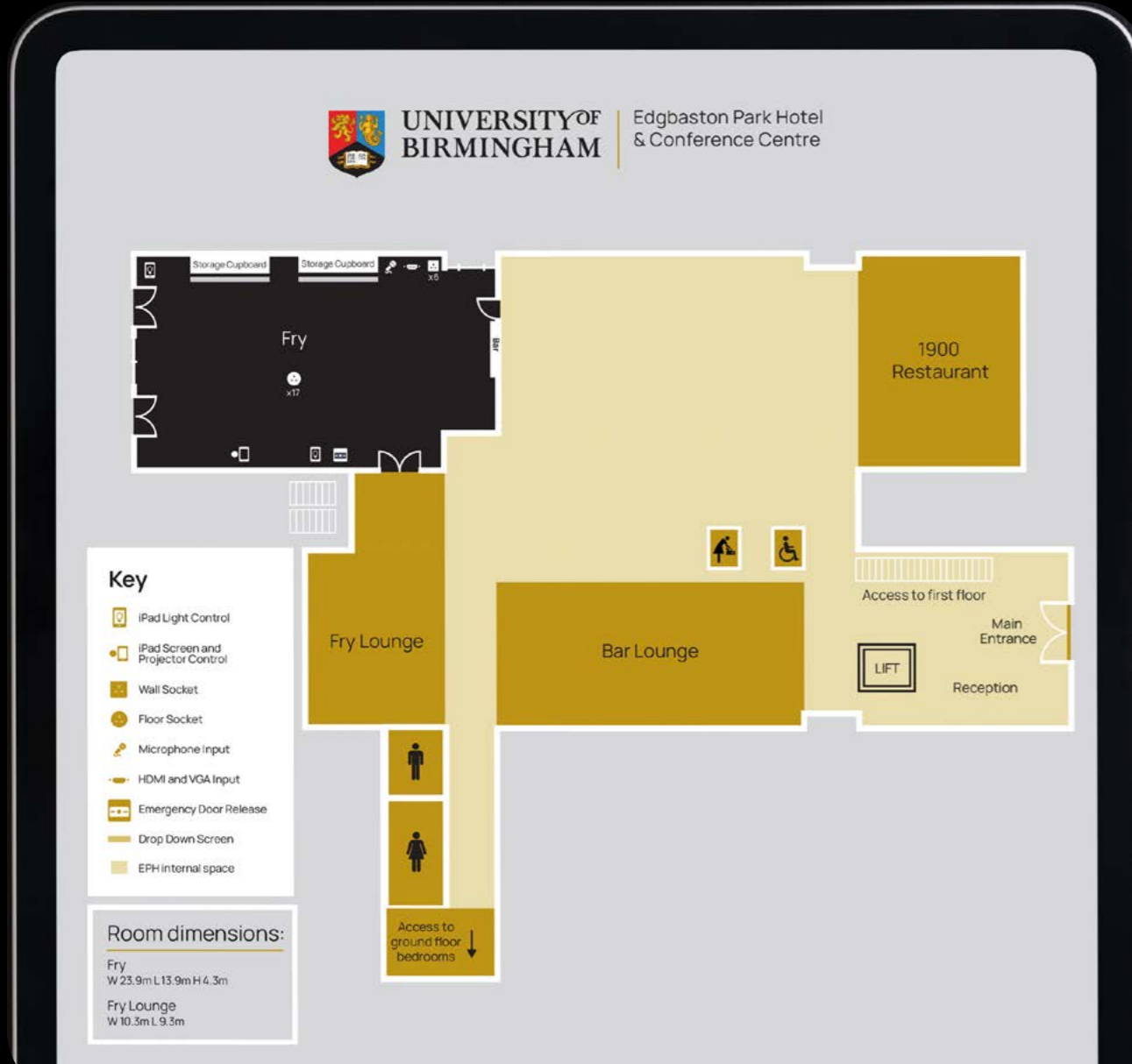
The hotel boasts a combination of modern and historic conference and event spaces, including a purpose-built conference centre with integrated AV.

It's well-appointed and accessible, with disabled parking, step-free access, ground-floor and first floor disabled toilets, and four accessible bedrooms with adapted ensembles. There's level access into the main hotel and conference centre, next to parking bays via automatic sliding doors.

We have plenty of outdoor space, ideal for team-building activities and informal conference barbeques.

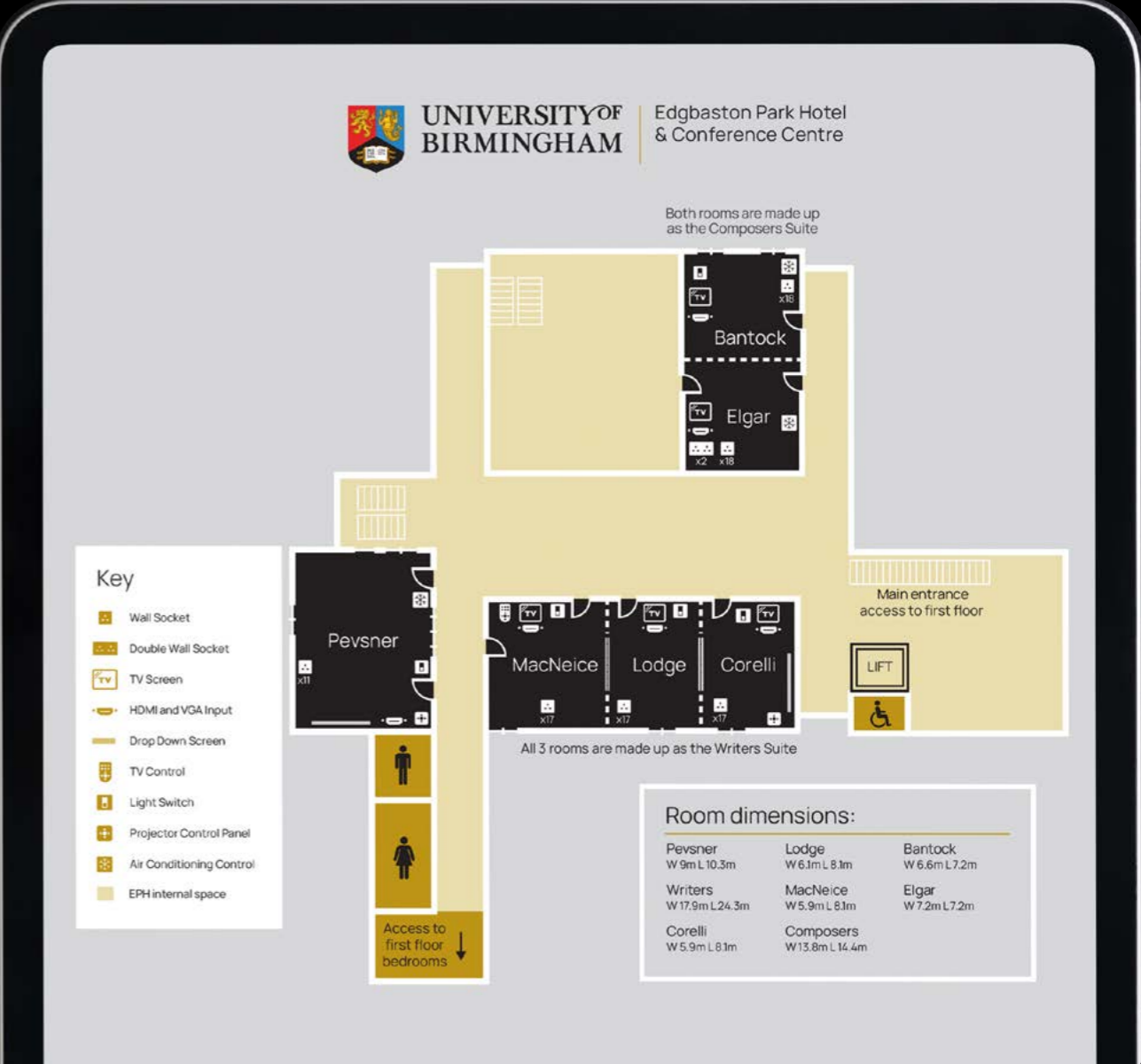


# Edgbaston Park Hotel Ground floor meeting rooms





# Edgbaston Park Hotel First floor meeting rooms





# Garth House

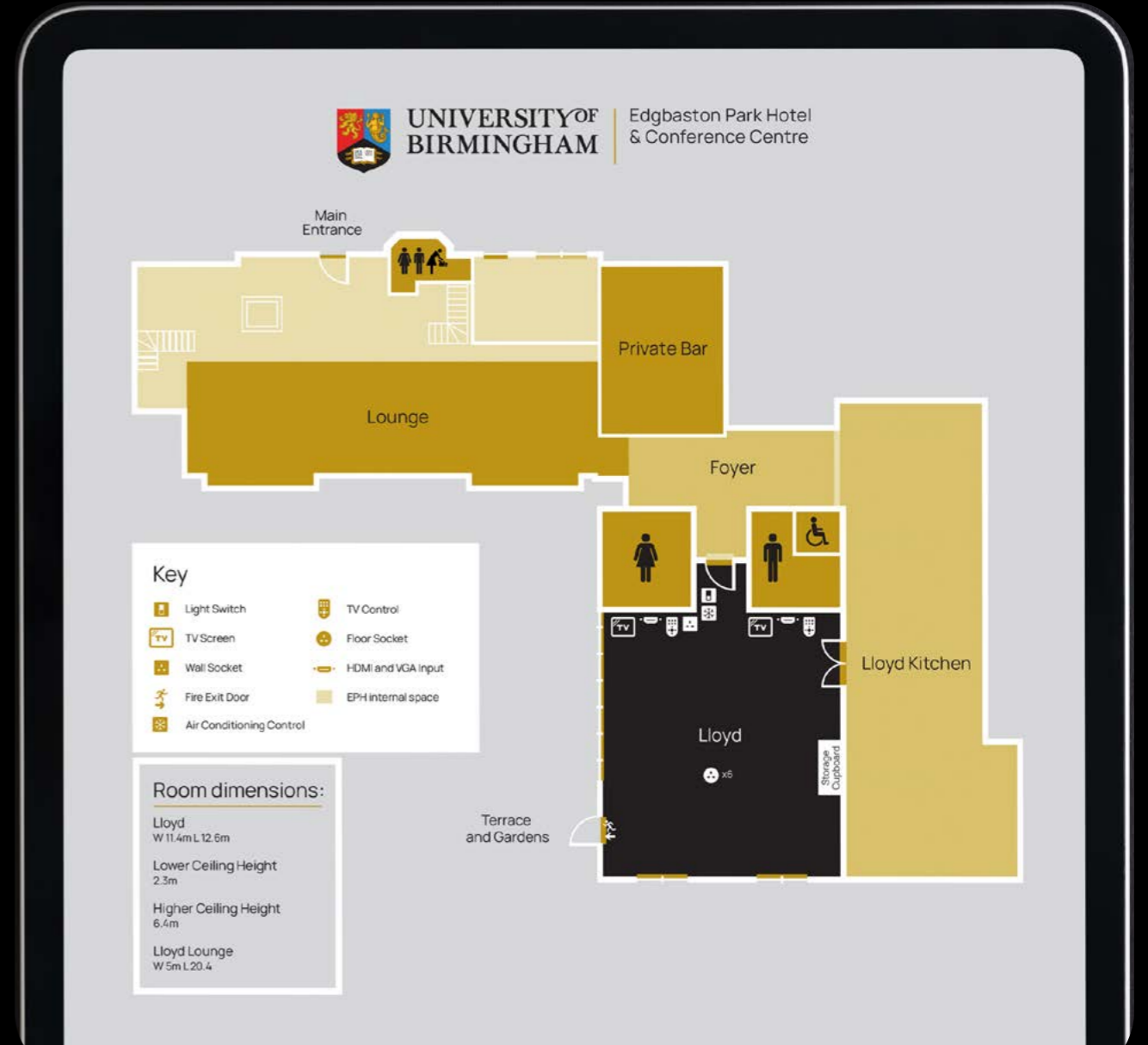
## Ground floor meeting rooms





# Hornton Grange

## Ground floor meeting rooms



# Room configurations

Room	Banqueting (based on 10s)	Cabaret (based on 6s)	Cabaret (based on 8s)	Theatre	U-Shape
Fry Suite	180	120	160	240	50
Writers' Suite	90	54	72	120	50
Corelli	30	18	24	40	22
Lodge	40	24	32	40	22
MacNeice	20	12	16	30	18
Corelli & Lodge	70	42	56	80	38
Lodge & MacNeice	60	36	48	70	40
Composers' Suite	60	36	48	80	30
Bantock	30	18	24	36	18
Elgar	30	18	24	40	20
Pevsner	60	30	40	100	30
<b>Hornton Grange</b>					
Lloyd Suite	100	54	72	110	45
Lloyd Suite (with projector & screen)	80	48	64	80	35
<b>Garth House</b>					
Barber	-	-	-	-	-
Winterbourne	-	-	-	-	-
Lapworth	-	-	-	-	-
<b>Restaurant and bar</b>					
1900 Bar	-	-	-	-	-
1900 Restaurant	-	-	-	-	-

Boardroom/ Hollow Square	Horseshoe (Chairs only)	Classroom (2 per 4ft table)	Exhibition	Bistro style
60	160	Please ask	34	-
60	55	58	18	-
16	20	24	6	-
28	20	24	6	-
20	12	12	4	-
46	46	48	12	-
48	40	48	12	-
40	45	30	16	-
20	30	20	6	-
30	40	24	6	-
40	30	32	11	-
<b>Hornton Grange</b>				
60	60	70	16	-
50	50	60	-	-
<b>Garth House</b>				
12	-	-	-	-
12	-	-	-	-
6	-	-	-	-
<b>Restaurant and bar</b>				
-	-	-	-	70
-	-	-	-	120

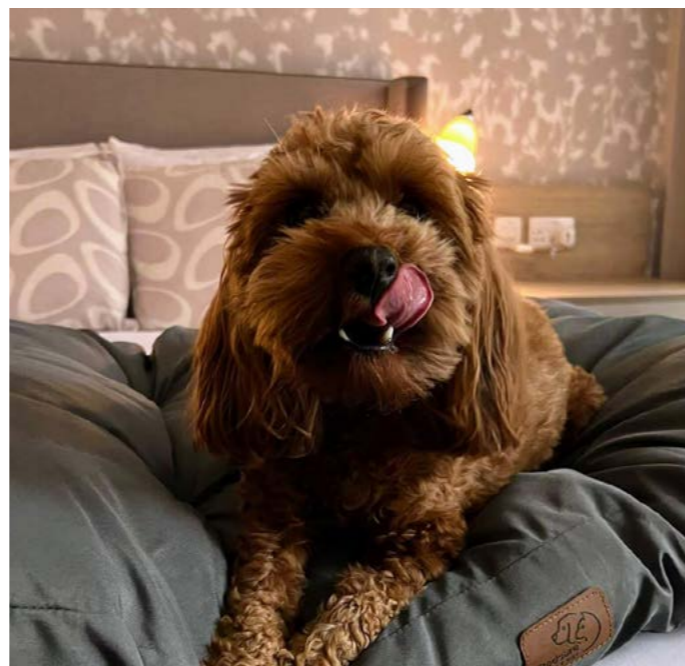
# Hotel rooms

---

Whether you're staying with us for business or leisure, with 185 bedrooms and three apartments to choose from you're guaranteed to find the perfect place for you.

Based in the main hotel building with all our facilities on your doorstep, our Standard and Executive rooms offer you everything you need for a comfortable and relaxing stay. We welcome four-legged guests too; there's a selection of pet-friendly standard and executive rooms on the ground floor.

Alternatively, indulge in an overnight stay in one of our Deluxe or Feature bedrooms. Based in the Grade II-listed Garth House and Hornton Grange, these bedrooms, complete with luxurious features and bespoke decor, will make any stay extra special.





# For every event

Our strength is in our flexibility. We combine a fabulous location with a highly-experienced team of event organisers, hosting:

- Large residential and small hybrid conferences and events
- Training sessions
- Team-building sessions
- Weddings
- Festive lunches
- Outdoor experiences
- Celebrations
- Party nights

# Inclusive and exclusive

With all-day delegate rates, we include:

- Room hire
- LCD projector and screen
- High-speed Wi-Fi
- Mineral water
- Unlimited tea and coffee
- A working buffet or two-course hot and cold buffet
- Snack breaks

With all residential packages, we include all of the above, plus:

- Accommodation
- Breakfast served in 1900 Restaurant
- Three-course dinner with teas and coffees

## FACILITIES AND AMENITIES

The hotel comprises 185 bedrooms and 3 serviced apartments. There is a stunning and open plan 1900 Restaurant, Bar and Terrace, as well as numerous well-positioned meeting and events facilities, suitable for up to 250 delegates.

The hotel sits outside the city and there is ample car parking.

The hotel is close to numerous shopping facilities in Birmingham (the city centre is a 10-minute drive from the hotel). The hotel is also a short drive from the city of the art (the city centre is a 10-minute drive from the hotel).

EDGASTON PARK HOTEL  
CONFERENCE CENTRE





## Dine with us

---

Our 1900 Restaurant adds a contemporary twist to classic dishes, served in a relaxed setting. Here, sleek interiors combine with exciting and innovative menus for an inspiring dining experience.

Our stylish 1900 Bar serves an extensive drinks menu and a wide range of light bites and sweet treats, making this the perfect place to unwind after a busy day and catch up with friends.

We also serve a classic afternoon tea with delicious sandwiches, indulgent cakes and elegant patisserie, accompanied by tea, coffee or a glass of fizz.



# Sustainability

---

We care about the planet and want to be part of the solution, not the pollution. Our hard work is being recognised and we now hold prestigious gold awards from Green Meetings and ECOsmart.

We encourage paper-free conferences and avoid single-use plastics and waste. That means we don't automatically provide flipcharts, notepads and pens (although if you need any stationery, please ask).

At Edgbaston Park Hotel and Conference Centre, we're passionate about championing sustainable practices that support Our People, Planet and Community sustainability pillars. Our ambition is to be net zero carbon by 2035, aligning with the University of Birmingham's commitment to achieve net zero carbon emissions by 2045.





# High impact, low carbon

New for 2024, our Green Meetings Package enables you to host brilliant events with minimal carbon footprint.

Our event menus have been carefully curated using fresh British ingredients and have been carbon costed to ensure every dish is truly sustainable\*.

Throughout the day, you can sip on responsibly and ethically sourced coffee and tea from UK-based Paddy & Scott's and family-owned Birchall. Both suppliers are committed to giving back to growers and their communities and prioritising sustainability with their products and packaging.

Hosting an event never felt so good.

\* The average UK meal has a carbon dioxide equivalent (CO2e) of 1.7kg. Everything on our Green Meetings menu is carbon A-rated, meaning it contains less than 500g CO2e.

[Find out more](#)

**Want to minimise your event's carbon footprint?**

Discover our new **Green Meetings Package**, with low-carbon menus and responsibly sourced refreshments that are good for you and the planet.

[Go green](#)





# An ideal base for team events: Peter Scott House

---

Nestled just steps away from Edgbaston Park Hotel, Peter Scott House stands out as an exceptionally budget-friendly accommodation option, with 37 inviting bedrooms and four conference spaces.

## Our twin and double bedrooms include:

- High-speed Wi-Fi
- Flat screen TV
- Ensuite bathroom
- Workspace
- Quality bedding and towels
- Iron and ironing board
- Tea and coffee facilities
- Hairdryer
- Bathroom amenities

Experience comfort and functionality seamlessly combined at Peter Scott House.

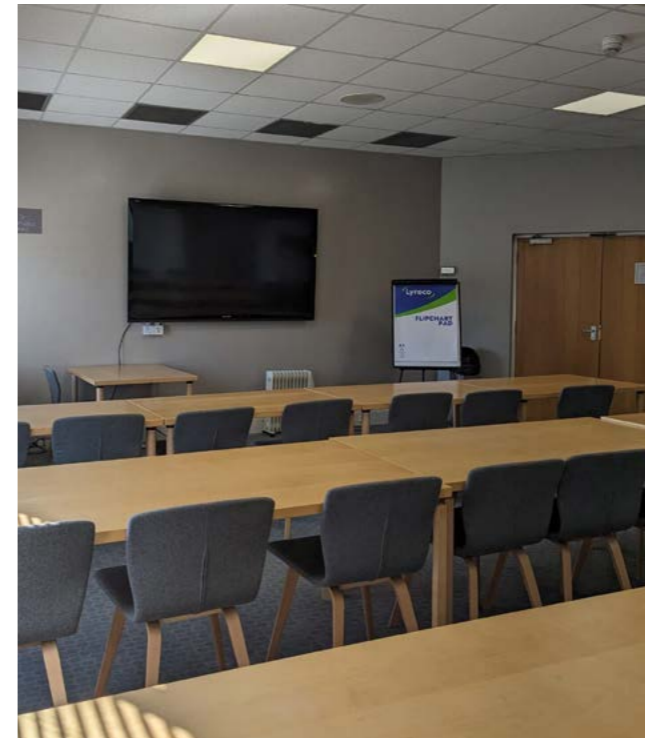
# Conferences at Peter Scott House


Peter Scott House serves as an ideal setting for intimate corporate gatherings, team-building activities, or brainstorming sessions.

Within these well-appointed conference spaces, a professional and conducive atmosphere awaits. Our contemporary amenities will elevate productivity and foster collaboration.

Contact our team on [enquiries@edgbastonparkhotel.com](mailto:enquiries@edgbastonparkhotel.com) or give us a call on 0121 414 8888 (option 2).

Room	Cabaret (based on 6s)	Cabaret (based on 8s)	Theatre	U-Shape	Boardroom/ Hollow Square	Horseshoe (Chairs only)	Classroom (2 per 4ft table)
Kingfisher	24	32	40	20	15	20	30
Falcon	-	-	-	-	10	-	-
Heron	-	-	-	-	10	-	-
Skylark	-	-	-	-	10	-	-





For all enquiries and bookings please email  
[enquiries@edgbastonparkhotel.com](mailto:enquiries@edgbastonparkhotel.com)  
or call 0121 414 8888 (option 2).

We look forward to welcoming you soon.



UNIVERSITY OF  
BIRMINGHAM

Edgbaston Park Hotel  
& Conference Centre

