

Tailored Events

Drake & Morgan Bars & Restaurants

DRAKE & MORGAN



The Party Everyone Will Remember Forever

From intimate gatherings to full-scale celebrations, our collection of striking bars & restaurants sets the stage for unforgettable moments:

- Beautiful, *design-led spaces* with private dining rooms across the portfolio
- Seamless service & AV capabilities to bring your event to life
- Tailored experiences, from thoughtful personal touches to show-stopping details
- Experience-led occasions, including *interactive mixology classes* perfect for team building
- Complimentary tastings for up to four guests, so every choice feels just right
- *Flexible dining styles* - from elegant three-course menus to canapés, bowl food & late-night bites
- Expertly crafted drinks, from timeless classics to seasonal, bespoke creations

You bring the occasion - we'll make it extraordinary.





Wow Factor Locations & Breathtaking Settings

Start your adventure in the most delightful setting. Our inspiring collection of bars & restaurants presents a huge choice of lovingly crafted venues throughout London & Manchester.

Housed in enviable city-centre settings, close to the best transport links, your guests will have no trouble getting to & from your celebration. And with a host of *adaptable, quirky spaces*, including stylish open plan bars, cosy restaurants & stunning alfresco terraces, we can cater for anything from intimate drinks & canapés to sit down dinners & dancing. Have *St Paul's Cathedral* as the backdrop to your photographs, gaze out over the beautiful greenery of *Canada Square Park* as you savour delicious canapés, & raise a toast on an all-weather alfresco terrace.

In The Know, Whatever The Occasion We've The Experience

*Our unique & mostly open-plan spaces can
be tailored to suit your exact needs.*

With a range of drink & food packages to choose from,
select one of our delicious set menus or work alongside us to
create something completely bespoke.

Once you've chosen your space, our wonderful team will *ensure
your event runs seamlessly from start to finish*. Each of our bars &
restaurants has a dedicated Sales Manager who will be on
hand to deliver everything you require.



What We Do (1 of 3)



Private Dining

We have several private & semi-private dining rooms across the Drake & Morgan portfolio that are perfect for everything from business lunches & dinners to boardroom presentations & meetings. Private dining rooms are available at *The Anthologist*, *The Folly*, *The Happenstance* & *Drake & Morgan at King's Cross*. *The Drift*, *The Refinery Bankside*, *The Refinery CityPoint* & *Devonshire Terrace* all have semi private areas.



Presentations & Conferences

With Wi-Fi, AV equipment & screens available at all our bars & restaurants, all the equipment you will need is on hand. Whether it's a quick morning conference or an afternoon session, *we cater to every requirement*, all of which take place in our beautiful spaces.



Meetings

Whether your meeting is a quick catch up over a cup of coffee or a more formal affair requiring screens & AV, we can accommodate this in our range of booths, private dining rooms & more private tables. We pride ourselves on *going the extra mile in every way* & our little touches & decorations will brighten up the most mundane meeting.

What We Do (2 of 3)



Networking Events

With a range of different spaces from *dining areas* to *alfresco terraces*, we can accommodate large & small groups for networking events with the capacity to provide AV equipment, drinks & canapés or full 3 course dining options. Why not have a look at our sample menus to get some inspiration.



Beautiful Wedding Receptions

Whether it's an intimate wedding reception for 50 or a lavish affair for 500 or more, our wonderful *"I Do"* team will organise every little detail for you from the enquiry right through until the day itself. Our little black book of suppliers & the multitude of little touches, from inspirational quotes to dainty trinkets, make every event that *little bit more special.*



Working Breakfasts & Lunches

Whether it's a quick breakfast with a colleague or a more substantial event over lunch, we provide the *everyday escapes* that are so essential to your busy working lives. Aesop's Table at *The Fable* is a very popular option as are our various private & semi-private dining rooms. Most of our venues are open from 7.30am ensuring you can get those meetings out of the way bright & early. Take a look at our pre-order packages or order from our a la carte.

What We Do (3 of 3)



Christmas Parties

From glittering receptions to beautiful banquets, *we have your Christmas party all wrapped up* across our bars & restaurants. We have a selection of seasonal drinks & food packages from drinks & canapés to a variety of set menus, all paired with second-to-none service that will *add sparkle* to any Christmas event.



Private Events

Our venues are *ideal places to hold events*, from informal drinks to very special occasions. We cater for everything from book launches, fashion shoots & theatre-style boardroom meetings to office parties, weddings & bar mitzvahs, all of which are tailored to suit each event perfectly.



Summer Parties

We have a number of gorgeous terraces perfect for get-togethers when the sun is shining. If the sun fails to appear, let our all-weather alfresco terrace at *Devonshire Terrace* save the day. From beautiful sharing cocktails to light bites & gorgeous everyday escapes, we are here to *help you celebrate the summer in style*.



Christmas at Drake & Morgan

At Christmas, our bars & restaurants become glimmering, joy-filled escapes - filled with twinkling lights, grand festive arches, & beautifully dressed trees

Inside, discover *candlelit dining rooms*, cosy corners layered with *sheepskin throws*, & those signature details that make all the difference, right down to *Quality Street in the loos*.

Our menus celebrate the season with *elevated festive classics*, *indulgent sharing feasts*, & perfectly paired Champagne & winter cocktails. From intimate gatherings to grand celebrations, every moment is thoughtfully curated.



Spring & Summer at Drake & Morgan

*As the seasons shift into the warmer months,
Drake & Morgan venues evolve with them.*

Across the collection, each site receives a *seasonal refresh* - from menus that lean into lighter bites, sharing plates & spritz-led serves, to cocktails that reflect the latest trending flavours. Terraces are reimaged too, often *in collaboration with leading drinks brands*, bringing to life immersive takeovers. The result is a portfolio of spaces that feel *distinctly different with each season*, offering something new for guests who return time & time again.

Whether you're planning relaxed after-work drinks, summer socials or larger celebrations, you can expect a fresh, considered experience that *captures the energy of the season* across every Drake & Morgan site.





1 The Refinery Bankside,
110 Southwark Street
☉ *Southwark, Blackfriars, Waterloo*



2 The Parlour, The Park Pavillion
☉ *Canary Wharf, West India Quay*



3 The Anthologist, 58 Gresham Street
☉ *Bank, St. Paul's, Cannon Street*



4 The Folly, 41 Gracechurch Street
☉ *Monument*



5 The Drift, 110 Bishopsgate
☉ *Liverpool Street*



6 The Fable, 52 Holborn Viaduct
☉ *Farringdon, Chancery Lane, St. Paul's*



7 The Refinery Regent's Place,
5 Brock Street
☉ *Warren Street, Euston Square*



8 Drake & Morgan at King's Cross,
Unit 3, 6 Pancras Square
☉ *King's Cross, St. Pancras International*



9 The Otherist, 111 Old Broad Street
☉ *Liverpool Street, Bank*



10 The Refinery Citypoint,
1 Ropemaker Street
☉ *Moorgate*



12 The Happenstance, Paternoster Square
☉ *Blackfriars, St. Paul's, City Thameslink*



13 The Sipping Room, 16 Hertsmere Road
☉ *Canary Wharf*



11 The Refinery New Street Square,
12 New Street Square
☉ *Chancery Lane*

14 Devonshire Terrace, Devonshire Square
☉ *Liverpool Street*



15 The Moniker, Fenchurch Street
☉ *Fenchurch Street, Monument*



16 The Anthologist Manchester,
St Peter's Square
☉ *Manchester Oxford Road*



TOWARDS MANCHESTER



- Alfresco Terrace
- Semi-Private Space
- Private Dining Room

1

110 Southwark Street, London

the refinery

BANKSIDE
by DRAKE & MORGAN

At the foot of the landmark Blue Fin Building in the midst of London's Bankside, *The Refinery* exudes sophistication & elegance. The beautiful alfresco terrace is ideal for summer receptions, whilst the semi-private mezzanine level, seating 18 guests in exclusive style, overlooks the buzz of the main restaurant. Alternatively, take the whole space for a beautifully contemporary setting.

📍 *Southwark, Blackfriars, Waterloo*

Key Features: Semi-private mezzanine • Al fresco terrace • Short walk to the Southbank



The Park Pavilion, 40 Canada Square Park, London

the parlour by DRAKE & MORGAN

With an expansive alfresco terrace, complete with its own bar overlooking Canada Square Park, *The Parlour* in Canary Wharf is picture perfect. Whilst ideal for summer parties, it's a great all-year round space too with its secret garden-inspired lounge that brings the great outdoors inside. *The Parlour's* versatile layout means it can be used as one large space or divided into three more intimate sections.

 *Canary Wharf, West India Key*

Key Features: Alfresco terrace with its own bar • Secret garden-inspired lounge
• Versatile layout • Heart of Canary Wharf



58 Gresham Street, London

THE ANTHOLOGIST

LONDON

by DRAKE & MORGAN

Exposed brick, antique mirrors, a marble mixology table, a lover's swing seat & two striking cocktail lounges are just some of the statement pieces to be discovered in *The Anthologist*. With a variety of flexible spaces catering for up to 300, *The Anthologist* is a gorgeous setting in the heart of the city, just a stone's throw from Bank station. If you are looking for an intimate space, the private dining room seats 30 & comes with a 1950s kitchen that doubles as a bar, or the cosy mezzanine level seats 12.

📍 Bank, St. Paul's, Cannon Street

Key Features: Private dining room • Semi-private chef table • Cosy mezzanine • Flexible spaces



41 Gracechurch Street, London

THE FOLLY

by DRAKE & MORGAN

Housed on the corner of Gracechurch Street, opposite Monument station, *The Folly* is a botanically inspired haven, featuring fabulous foliage, beautiful floral wallpaper, plant pot lampshades & a beehive-inspired bar. From its exclusive private dining room to its candle-filled hidden alcoves, *The Folly* provides both an inspired setting & an expansive party space.



Monument

Key Features: Private dining room • Cosy alcoves • Expansive party space • Two floors



110 Bishopsgate, London

the drift 
by DRAKE & MORGAN

With two floors of stunning interiors & beautiful décor, including opulent gold wallpaper, elaborate candelabras, crystal glassware & soft lighting, *The Drift* provides a luxurious setting for any celebration. Its location is perfect too, in Heron Tower, the heart of the iconic Bishopsgate. From an intimate gathering in the hideaway dining area to an exclusive hire for a grand reception of up to 400 people, at *The Drift* anything is possible.

 *Liverpool Street*

Key Features: Semi-private cabana • Two floors
• Great for exclusive hire events • Heart of Bishopsgate



52 Holborn Viaduct, London

the Fable

Bar & restaurant
by DRAKE & MORGAN

Inspired by fairytales & the fables of Aesop, *The Fable* in Farringdon is the ideal setting to start the story of the rest of your lives. A dazzling wonderland, there is a range of inspiring spaces spread across three fabulous floors – from the Library & the Never-Ending Story through to the Magic Kingdom & Enchanted Forest – with décor handpicked from the very best British designers. Whether it's an exclusive party on the mezzanine or one that takes over the whole restaurant, *The Fable* is the perfect backdrop for any corporate celebration.

📍 Farringdon, City Thames Link, St. Paul's

Key Features: Three floors • Mezzanine • Enchanting décor



5 Brock Street, Regent's Place, London

the refinery

REGENT'S PLACE
by DRAKE & MORGAN

Tucked away from the bustling Euston Road, *The Refinery at Regent's Place* offers a stylish urban backdrop for your event. Scandi-inspired interiors, floor-to-ceiling windows, polished natural timbers, reclaimed flooring & antique copper accents make this a great space for chic weddings. As one of our smaller venues, it's perfect for an intimate gathering although with a standing capacity of up to 300, larger parties can be accommodated too.

📍 *Warren Street, Euston Square*

Key Features: Perfect for weddings • Great for intimate gatherings • Floor to ceiling windows



6 Pancras Square, 6 King's Boulevard, King's Cross, London

DRAKE & MORGAN AT

KING'S CROSS
LONDON

Drake & Morgan at King's Cross is our flagship bar & restaurant. Overlooking the beautiful greenery of peaceful Pancras Square, this stunning venue features two floors, an outdoor terrace & two unique kitchen pods. The sleek basement Green Room bar with atmospheric lighting & a striking central square bar provides a dramatic backdrop for any private or corporate celebration.

📍 *King's Cross, St Pancras International*

Key Features: Private dining room • Alfresco terrace • Basement bar • Conveniently located



111 Old Broad Street, London

THE OTHERIST

by DRAKE & MORGAN

The Otherist is located in the heart of the city, between Bank & Liverpool Street, making it perfect for those travelling to your event from far & wide.

Catering for up to 300 people standing, it's a surprisingly adaptable space, complete with all the little details that make the Drake & Morgan difference.

📍 *Liverpool Street, Bank*

Key Features: Sunken lounge area • Heart of the city • Great for small & large parties



1 Ropemaker Street, London

the refinery

CITYPOINT
by DRAKE & MORGAN

Statement wallpapers & furniture are complemented by soft lighting & cosy faux fur to create our chic, contemporary bar, *The Refinery CityPoint*. Close to a variety of hotels & transport links, it's an ideal location for you & your guests, with venue possibilities including a lounge & a private dining room as well as an open plan bar.



Moorgate

Key Features: Private dining room • Lounge area • Cosy & contemporary



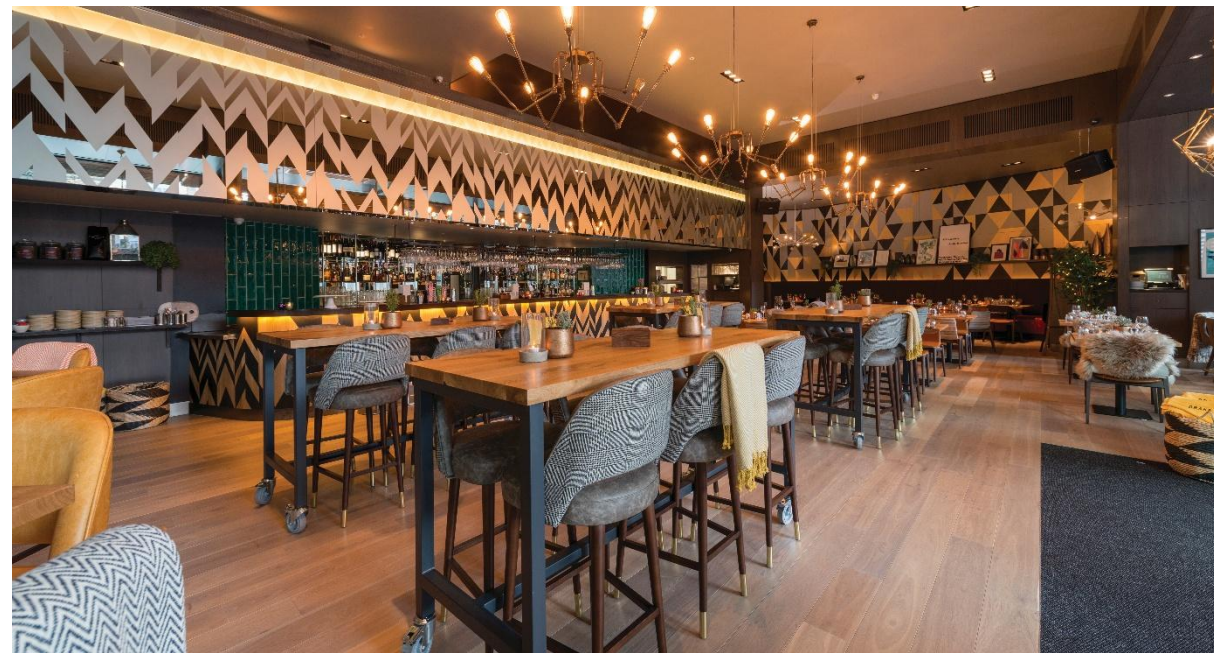
12 New Street Square, London

the refinery
NEW STREET SQUARE
by DRAKE & MORGAN

Conveniently situated close to City Thameslink, Chancery Lane & Farringdon, with a range of hotels nearby, *The Refinery New Street Square* will be easy for your guests to get to & from on the day. The gorgeous space is flooded with light, featuring high ceilings & floor-to-ceiling windows, chic décor, & a variety of seating arrangements, including a cosy lounge area hidden away upstairs & a lovely alfresco terrace.

↻ *Chancery Lane*

Key Features: Semi-private mezzanine • Alfresco terrace • Floor to ceiling windows



Paternoster Square, London

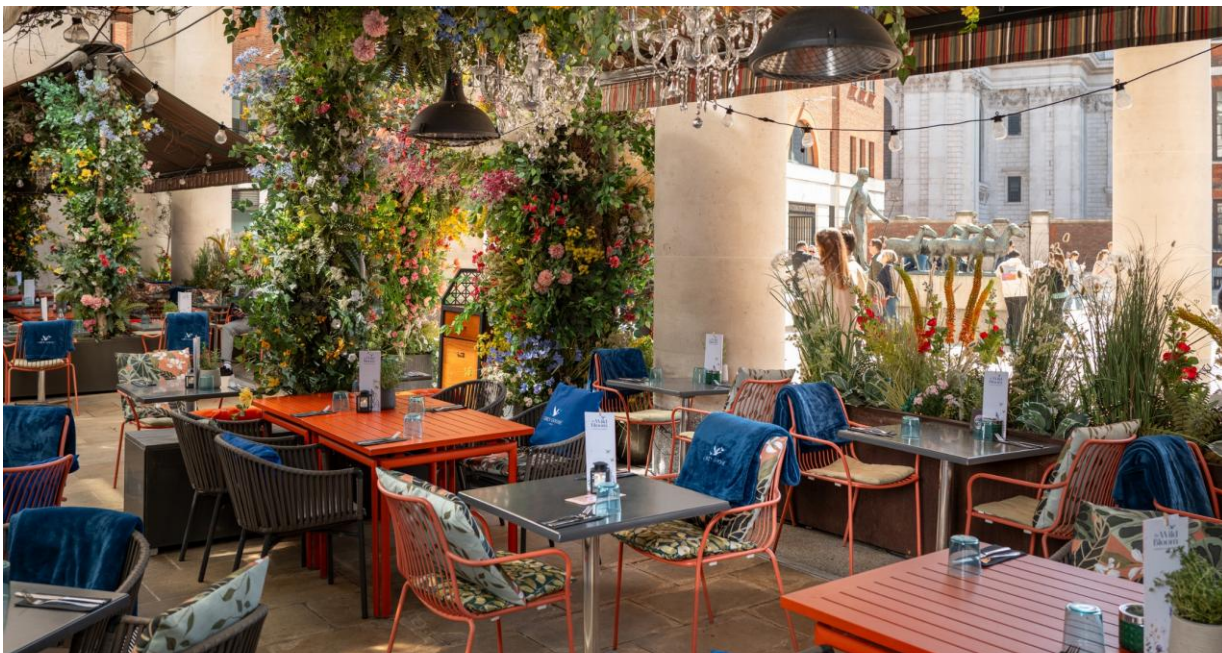
the happenstance

by DRAKE & MORGAN

In the shadow of St Paul's Cathedral sits *The Happenstance* at Paternoster Square, a stunning venue in the heart of London complete with a license for civil ceremonies & weddings. Start your evening with canapés, head out onto the terrace to raise a toast with your guests whilst taking in the picturesque view of London landmark St. Paul's Cathedral, then enjoy a beautiful meal together in our glamorous wine bar space.

📍 *Blackfriars, St. Paul's, City Thameslink*

Key Features: Private dining room • Lounge area • Alfresco terrace
• Overlooking St Paul's Cathedral



16 Hertsemere Road, Canary Wharf, London

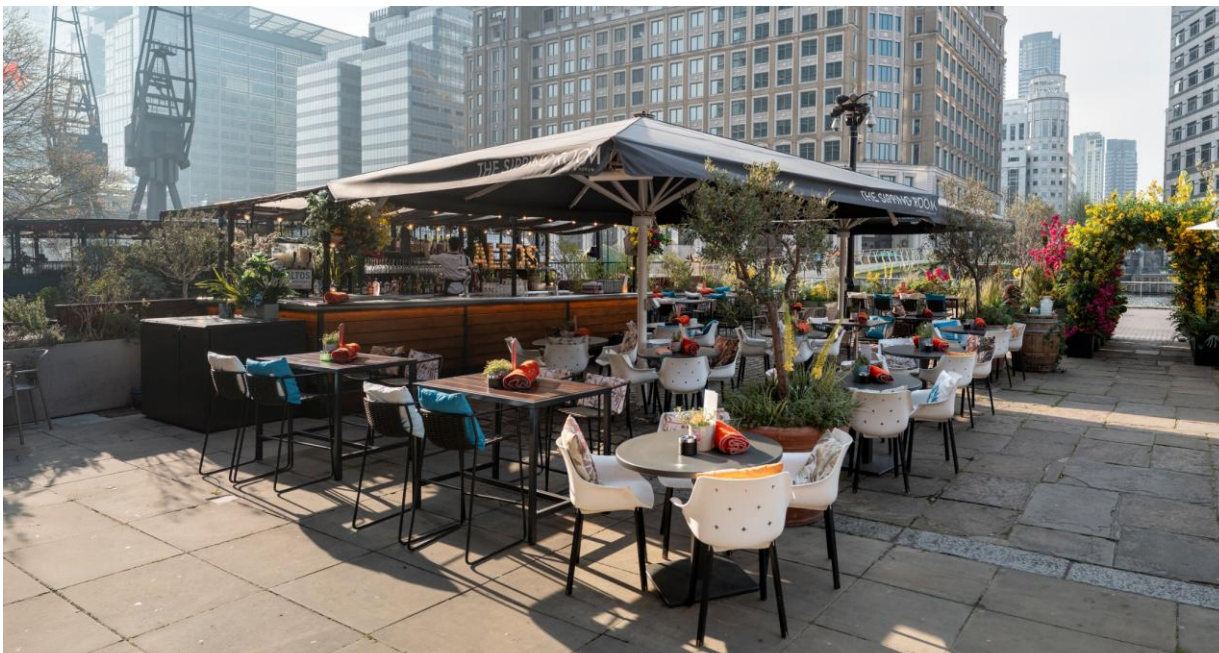
THE SIPPING ROOM

by DRAKE & MORGAN

From a stylish outdoor terrace overlooking the docks, to a basement restaurant, *The Sipping Room* offers a variety of spaces that can be hired out as a whole or separated for smaller parties. Quirky warehouse features like exposed floorboards, timber beams & cast iron columns are complemented by carefully curated touches & unique details, including mood lighting, candles in cosy nooks & crannies, & faux fur throws. Ideally located in West India Quay & close to Canary Wharf, it is an idyllic sanctuary for the most magical celebrations.

📍 *Canary Wharf, West India Quay*

Key Features: Two floors • Alfresco terrace • Overlooking the docks • Quirky & cosy



Devonshire Square, London

DEVONSHIRE TERRACE

by DRAKE & MORGAN

Devonshire Terrace in Devonshire Square is a unique events venue in the heart of the city. Steeped in history, it was built in the early 1800s to store goods shipped from Bengal, including silk, ivory & mother-of-pearl. With a glass roof over the western courtyard, spectacular views of iconic London landmark 'the Gherkin', & a license for weddings & civil ceremonies, it is a magical setting for any event.

 *Liverpool Street*

Key Features: Lounge bar • Semi-private rooms • All weather courtyard terrace



Fenchurch Street, London

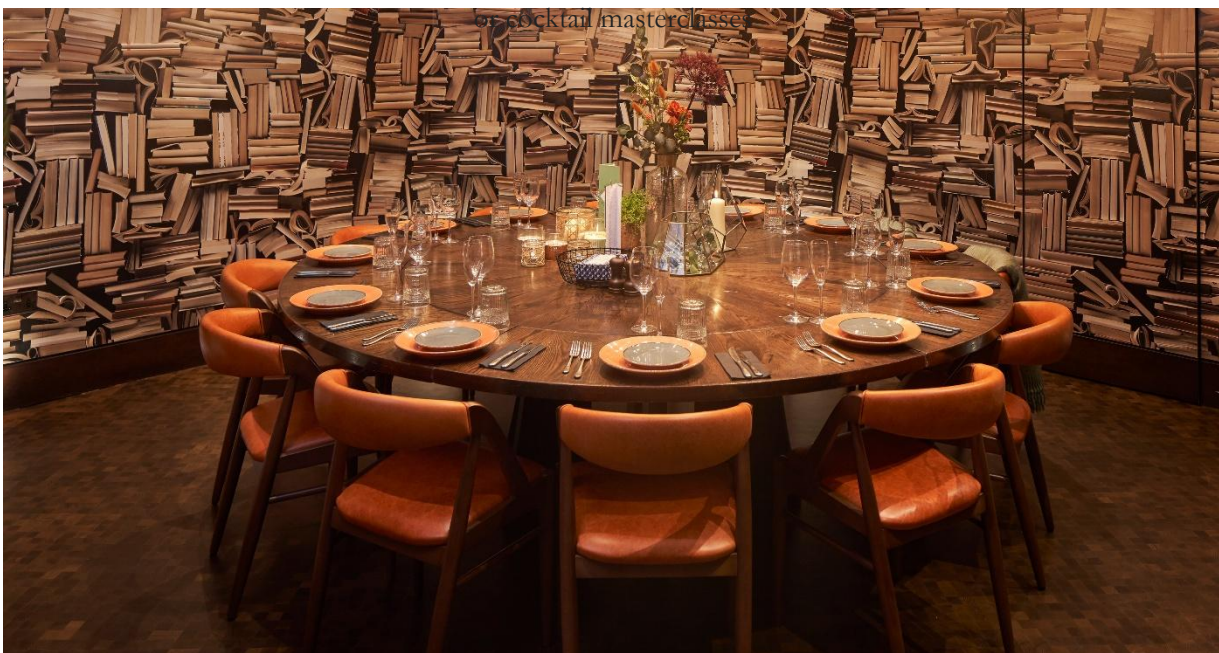
THE MONIKER

by DRAKE & MORGAN

From the moment the doors open in the morning, *The Moniker* is busy with City workers getting their day off to a good start with a D&M breakfast. With a lounge bar, private dining room & semi-private 'snug' area with a big screen, we're bound to have a space to suit your event whatever you're planning – from business meetings to cocktail masterclasses or wine tastings.

📍 *Fenchurch Street, Monument*

Key Features: Private dining room • Lounge bar • Semi-private snug
• Ideal for business meetings



St Peter's Square, Manchester

THE ANTHOLOGIST

MANCHESTER

by DRAKE & MORGAN

Overlooking St Peter's Square, *The Anthologist* bar & restaurant boasts an unrivalled setting right in the heart of Manchester. With a large open-plan bar opening onto an alfresco terrace overlooking the square, the options are endless for a business lunch for two, to exclusive hire of the large open plan venue. Located mere feet from the tram interchange, it's both convenient & a destination bar.

 *Manchester Oxford Road*

Key Features: Alfresco terrace • Overlooking St Peter's Square
• In the heart of Manchester • Open plan



For all
Enquiries
Contact Us

Enquiries@drake-morgan.co.uk

