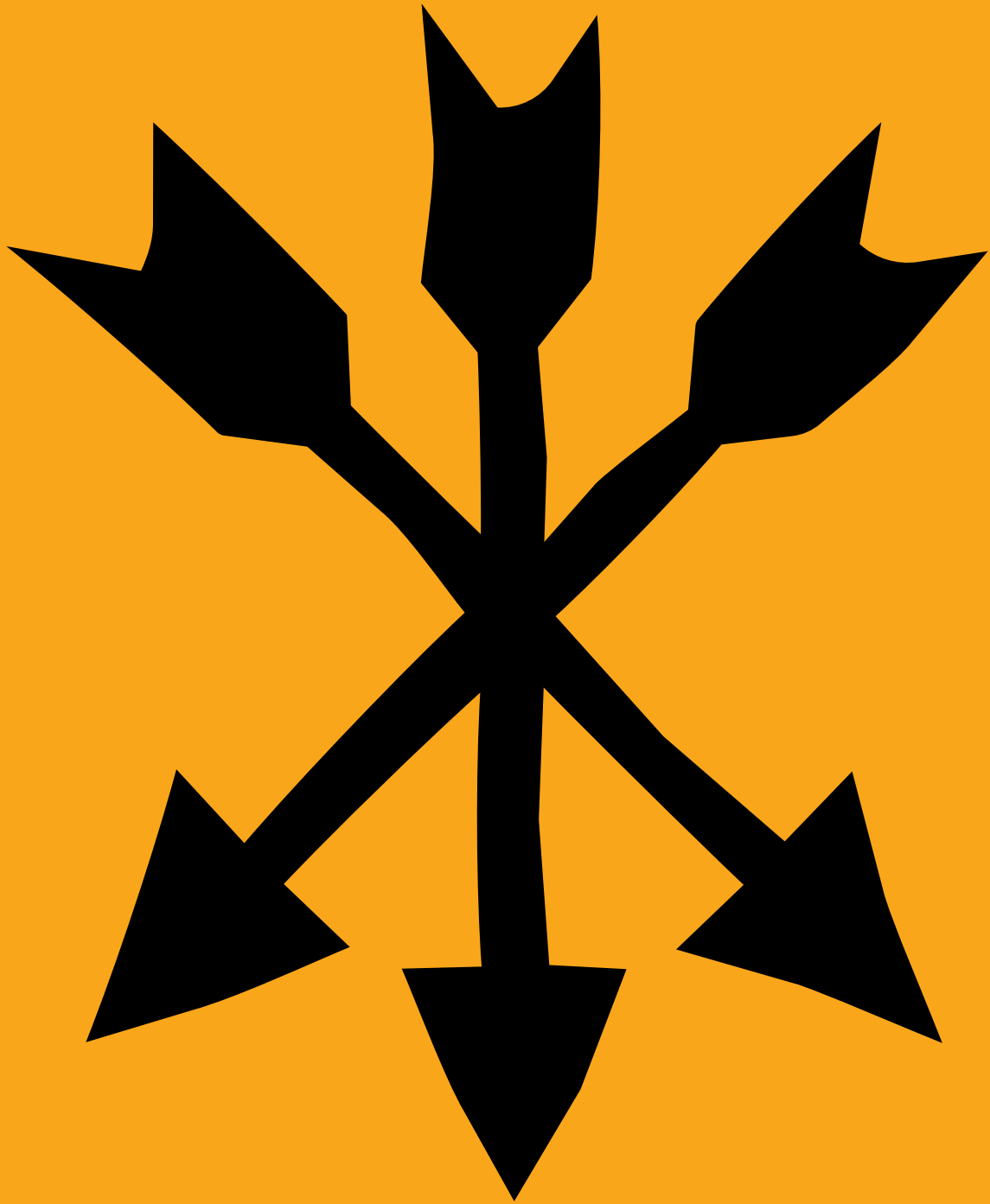


HAMPTON

PRIVATE DINING



MANOR

AN ESTATE
DEDICATED
TO FOOD...

WHERE TIME
TOGETHER IS
DELICIOUSLY
REWARDING



It's rare to find a Michelin-starred manor house that looks after private dining for up to 120.

Within the beauty of a historic manor house, the table is laid to make landmark memories.



THE COURTYARD

FEATURES

Glass roof
Warm stone walls
Abundant natural daylight
Second smaller atrium, separated by a curtain
Private bar
Heated outdoor garden terrace
BBQ on terrace

NUMBERS

One table for up to 24
Long tables for up to 116
Round tables for up to 132

AVAILABILITY

9-5pm or 6:30-midnight
Minimum spend applies for each session
All menus are available in the Courtyard



DINING ROOM

FEATURES

Hand painted chinoiserie walls
Views of the clocktower
Long hand carved oak table
Oak pannelling
Log fire
Laid with 1- 3 long tables

NUMBERS

From 8-42

AVAILABILITY

For private lunches and dinners
For dinner, only our 5 or 7 course tasting menus
are available



TASTING ROOM

FEATURES

Our Chef's table

Glass window into the kitchen
so you can watch the chefs cook!

Oak panelled room

NUMBERS

Minimum 6

Maximum 8

AVAILABILITY

For dinner, only our 5 or 7 course tasting menu
is available.



PRICING

PRIVATE DINING MENU

2 courses £70pp

3 courses £85

4 courses £90

Wine pairing 3 courses £50

Wine pairing 4 courses £60

Special lunch rate:

For Dining Room lunches only

Mon-Thurs only

2 courses £55

3 courses £70

TASTING MENUS

These are set menus

5 courses £115

7 courses £145

Wine pairing 5 courses £70

Wine pairing 7 courses £90

SUNDAY LUNCH

3 courses £65

4 courses £75

SUMMER BBQ PACKAGE

BBQ £60

Gourmet BBQ £78

AFTERNOON TEA

From £35

Please also see minimum spends*

Prices are inclusive of vat



MINIMUM SPENDS APPLY

*If minimum spends are not reached, room hire applies.

MINIMUM SPENDS FOR COURTYARD

Mon-Thurs

9am-5pm or 7pm-1030pm : £2500 on food and pre-paid drink packages

All day hire until 1030pm: £5000 on food and pre-paid drink packages

Any hire that lasts until midnight: £6000 on food packages. 7 allocated bedrooms must also be booked or 15 bedrooms if you'd like music without sound restriction.

Fri-Sat

9am-5pm £2500 on food packages and pre-paid drink packages

7pm-1030pm: £3500 on food packages and pre-paid drink packages

All day hire until 1030pm £6000 on food and pre-paid drink packages

Any hire that lasts until midnight: £7000 on food and pre-paid drink packages. 7 allocated bedrooms must also be booked or 15 bedrooms if you'd like music without sound restriction.

For hire until 1030pm: last orders at 1030pm, exit by 11pm

For late night hire until midnight: last orders at 1145pm. Late licence £800/hr past midnight

Minimum 16 guests, maximum 132.

MINIMUM SPENDS FOR DINING ROOM

£600 for lunch (12-4pm)

£1000 for dinner (7-11pm)

Minimum 8 guests, maximum 40

MINIMUM SPENDS FOR TASTING ROOM

Only available on our 5 or 7 course menus

Minimum 4 guests, maximum 8

**If your food and pre-paid drink package order is below our minimum spends, we will add a room hire fee*

*For Fri-Sunday events**, these cannot be booked until 4 months in advance unless your spend is over £20,000 May-Dec or £8,000 Jan-March*





GARDEN COURSE

—

TOMATO GAZPACHO
Burrata, sourdough croutes



STARTER

—

SMOKED TROUT RILLETTE
kohlrabi, elderflower salad

CAULIFLOWER
Berkswell sauce, beer pickled onions

CHICKEN LIVER PARFAIT
Smoked beetroot ketchup, pickled beetroot sourdough,
compressed apple

SAMPLE MENU



MAIN

—

ROAST BEEF

Bone marrow gravy

COTSWOLD CHICKEN

Pea, lettuce, bacon

COD

XO beurre blanc, sea vegetables

All served with boulangere potatoes



DESSERT

—

BAKED ALASKA

Blackberry, custard

CHOCOLATE DELICE

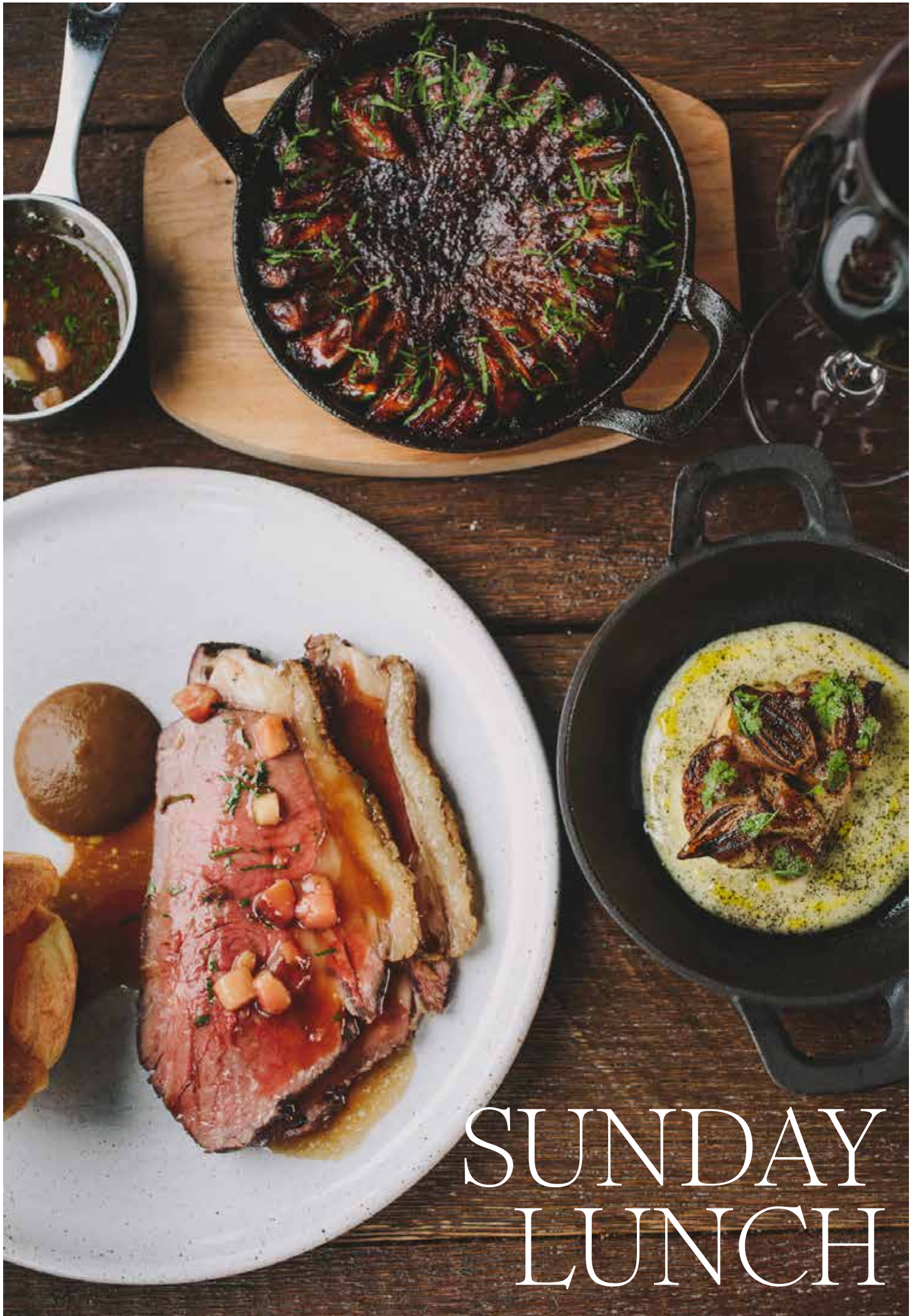
Poached pear, yoghurt sorbet

BROWN SUGAR BRÛLÉE

Lingonberry compote, crème fraiche ice-cream

All guests will eat the same menu, (one starter, one main, one dessert) unless they have an allergy or dietary. Vegetarian options are offered as a second option as well.

THIS IS SAMPLE MENU ONLY. MENUS CHANGE EVERY SEASON.



SUNDAY LUNCH

THE BBQ EXPERIENCE



Photo credit: Anna Clarke

SUMMER BBQ PACKAGE

4 BBQ dishes (both meat and fish)

3 seasonal salads

Dessert

From £60 per person

Out on the terrace, the Big Green Eggs will be alight. For those of you who don't know your gas from your grill, the Big Green Egg is the Aston Martin of the BBQ world and sends any BBQ afficiando into a flush.

With your own private south-east facing terrace, its a lunch time sun trap.



THE BEDROOMS



The estate offers up to 24 bedrooms.

MANOR BEDROOMS



COTTAGE BEDROOMS

NEXT STEPS

RECEIVE YOUR QUOTE

Send us an email with your numbers and dates

BOOK YOUR DATE

Book with a deposit of 25% the total quotation

GATHER

Make your landmark moment

Hampton Manor

Shadowbrook Lane
Hampton-In-Arden
B92 0EN

T: 01675 446 080
E: events@hamptonmanor.com