



THE  
PRINCE  
AKATOKI

MEETINGS AND EVENTS.

The Prince Akatoki London  
50 Great Cumberland Pl,  
Marylebone, London W1H 7FD, UK  
+44(0)20 7724 4700  
info@theprinceakatokilondon.com

theprinceakatokilondon.com



## MEET OUR EXECUTIVE CHEF .



My team and I look forward to inviting you on a culinary journey where you can experience a taste of Japan in the heart of London.

We have created a wide selection of vibrant and diverse dishes that can be tailored for any kind of bespoke event.

We take great pride in sourcing carefully selected ingredients enabling us to showcase our philosophy of modern cooking where East meets West.

Gary Durrant, Executive Chef





Creating tailor made events with great flexibility and thoughtful service, we work alongside you from start to finish to deliver your ideal event.

## TYPES OF EVENTS.

Typical events held at The Prince Akatoki London include:

- Business meetings
- Boardroom meetings
- Residential meetings
- Private dining
- Canapé / drinks receptions
- Afternoon tea parties
- Television interviews
- Book launches
- Product launches
- Exhibitions

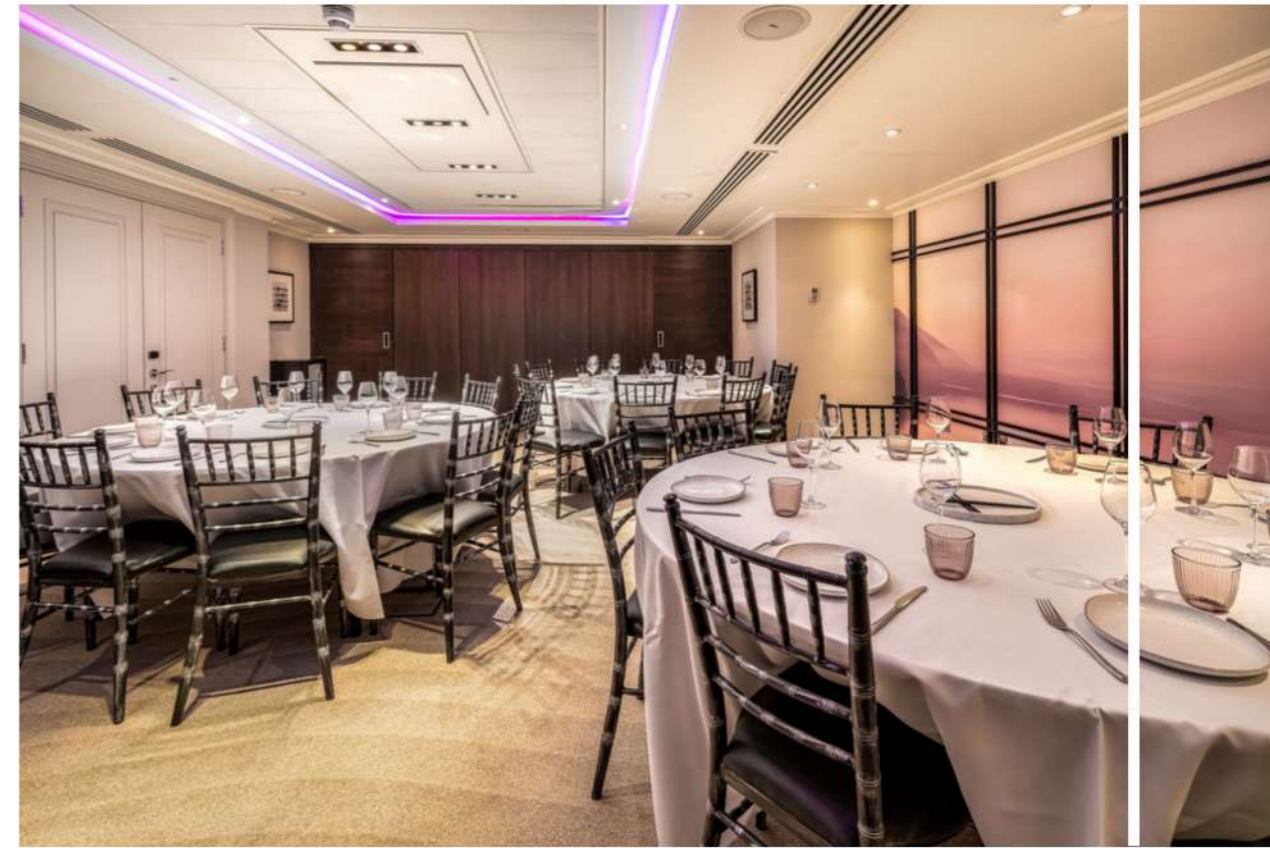
Our meeting and event spaces can be combined to create a special event or a small business meeting in a comfortable and relaxed atmosphere.

# THE PRINCE ROOM.

Welcome to The Prince Akatoki London.

Located on the lower ground floor, The Prince Room is a versatile venue, used for boardroom meetings and private dining events.

Furnished with video conferencing facilities and a high spec LCD screen that can be connected to your PC. The two adjacent studio suites – Sunrise and Sunset, can be used as a combined area for extra meeting and breakout rooms or be used together for private viewings or showrooms.



## MEASUREMENTS & LAYOUT

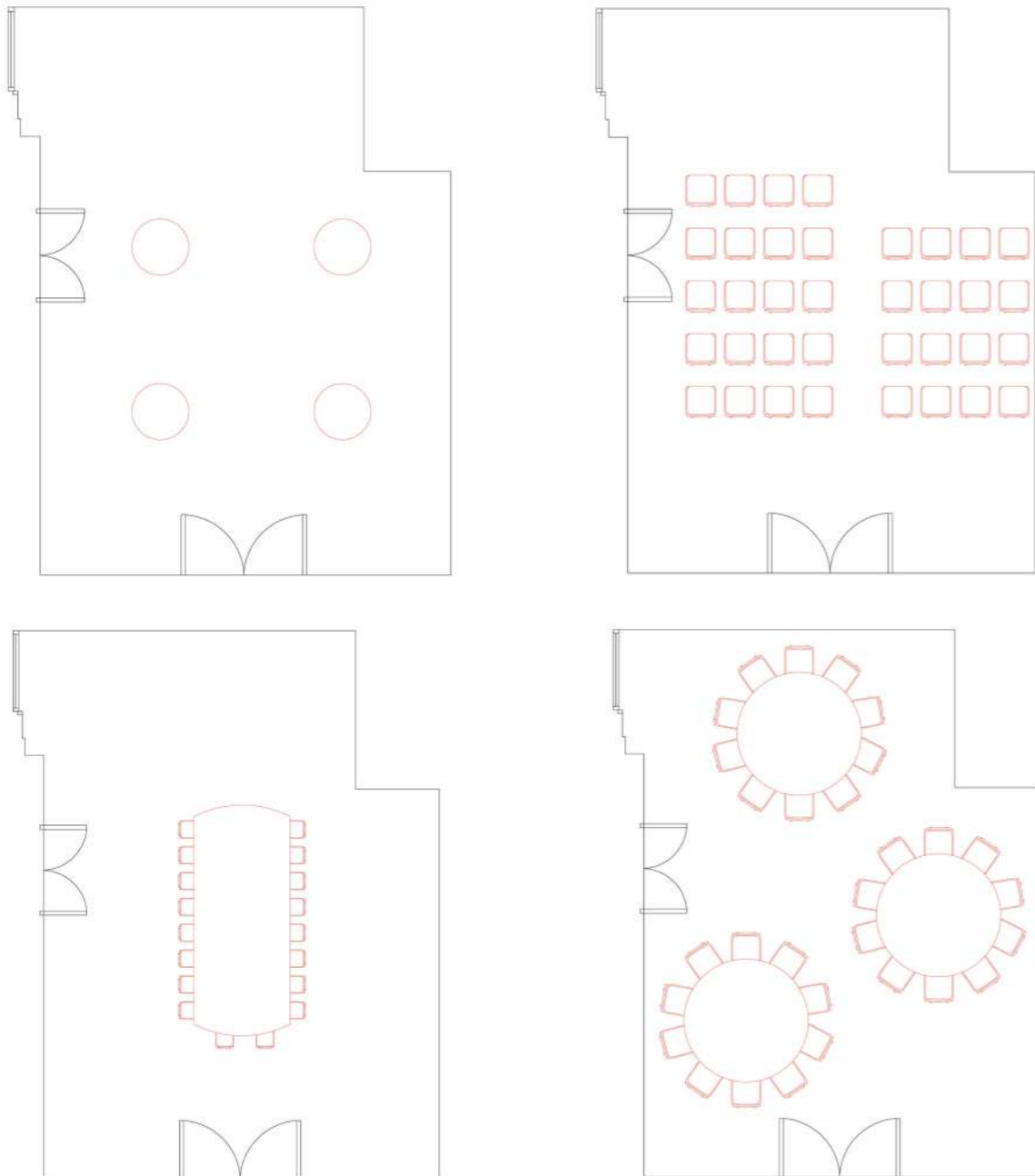
Area	50sqm
Length	10m
Width	5m
Height	2.85m
Boardroom	22 people
Reception	40 people
Private dining	30 people
Theatre	30 people

# LAYOUTS AND FEATURES.

Private hire includes:

- 65" flat screen
- AV Equipment
- Clickshare
- Branded stationary (pens, highlighters and pads) and flipchart

All alcoholic beverages including cocktails to be pre-ordered.



THEATRE



BOARDROOM



RECEPTION



PRIVATE DINING



## ADDITIONAL OFFERINGS.

Whisky Tasting Masterclass

---

Our International Whisky flight features premium whiskies from India, Denmark and Taiwan.



Sushi Masterclass

---

Make memories whilst mastering the art of sushi. Treat yourself to a lesson in creating professional quality sushi with the sushi experts at TOKii. Dive into unique flavours and indulge in your creation.



Ikebana Workshop

---

Discover the art of Japanese flower arranging, a blend of traditional Japanese methods combined with contemporary styles to create a beautiful bespoke arrangement.



Koto Afternoon Tea

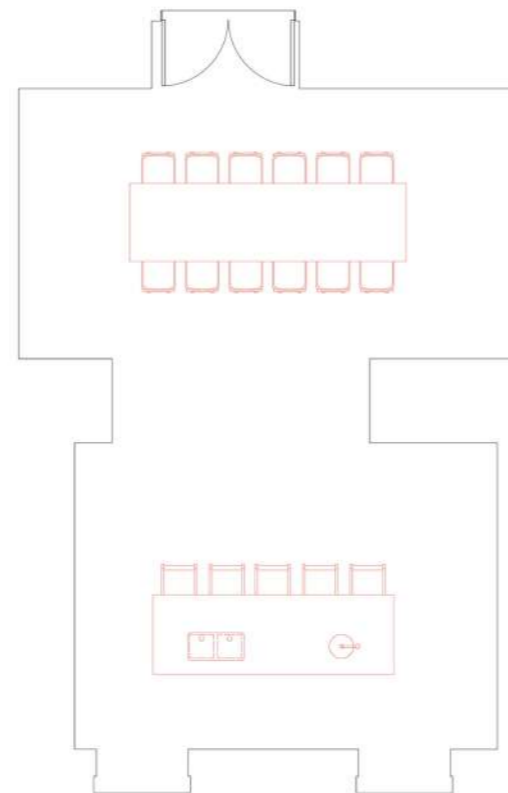
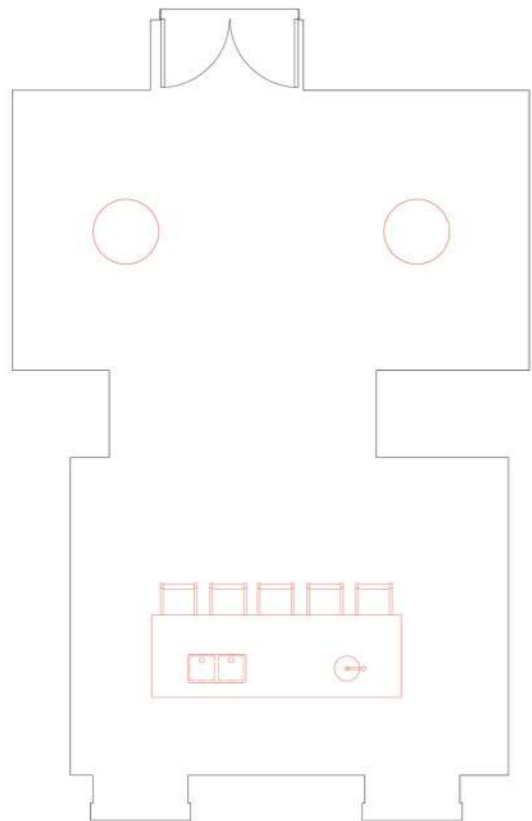
---

Transporting you to the streets of Japan, we are hosting a Koto Afternoon Tea refined with the art of a live performing Japanese musician, Keiko Kitamura. She will play the national string instrument of Japan, Koto which has a rich history that captivates music lovers from all over the globe



# THE MALT LOUNGE AND BAR.

Located on the ground floor, this flexible event space boasting elegant hand-crafted tableware is ideal for drink receptions, dinners or special events. Featuring views of Great Cumberland Place, the room is highlighted by high ceilings, natural daylight and etchings of Japanese calligraphy on mahogany panels. The stunning bar counter contribute to a minimalistic yet striking interior.

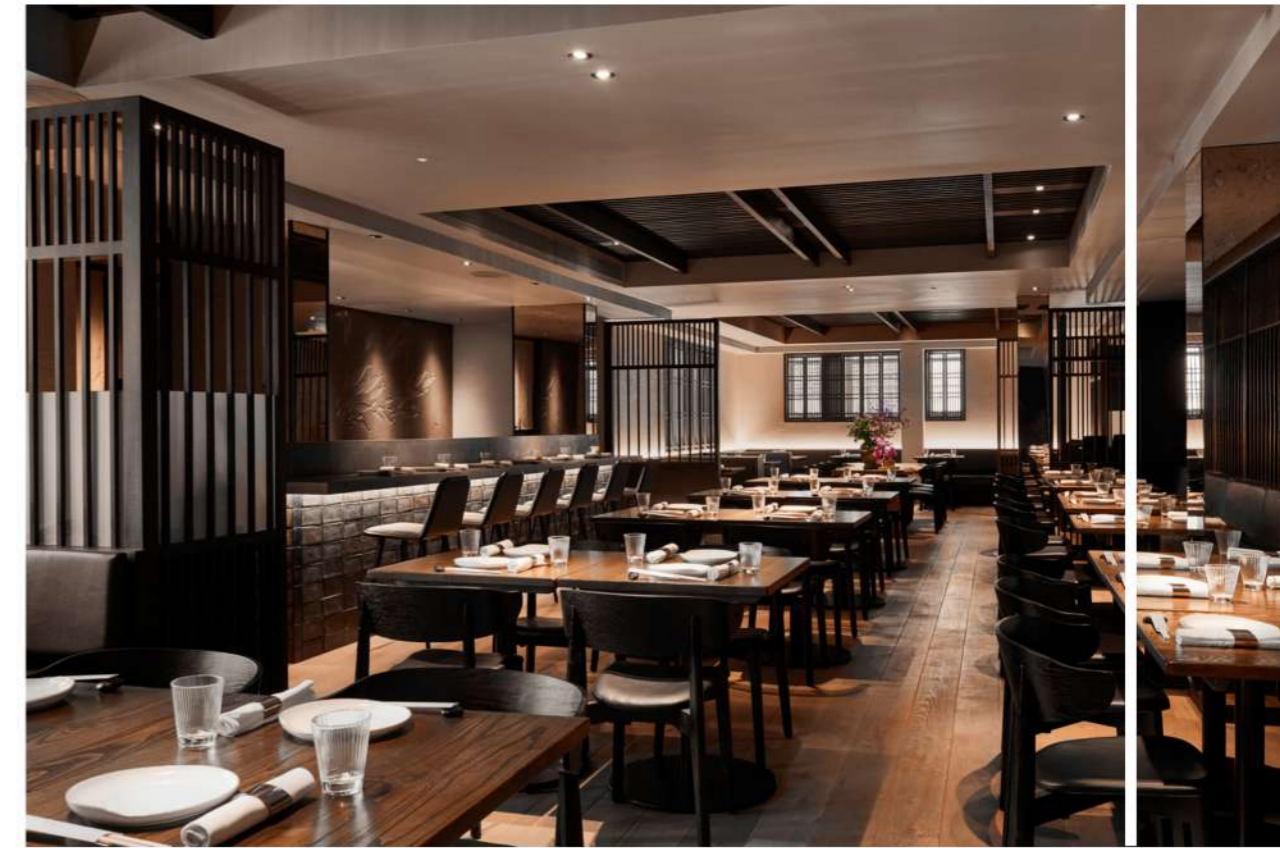
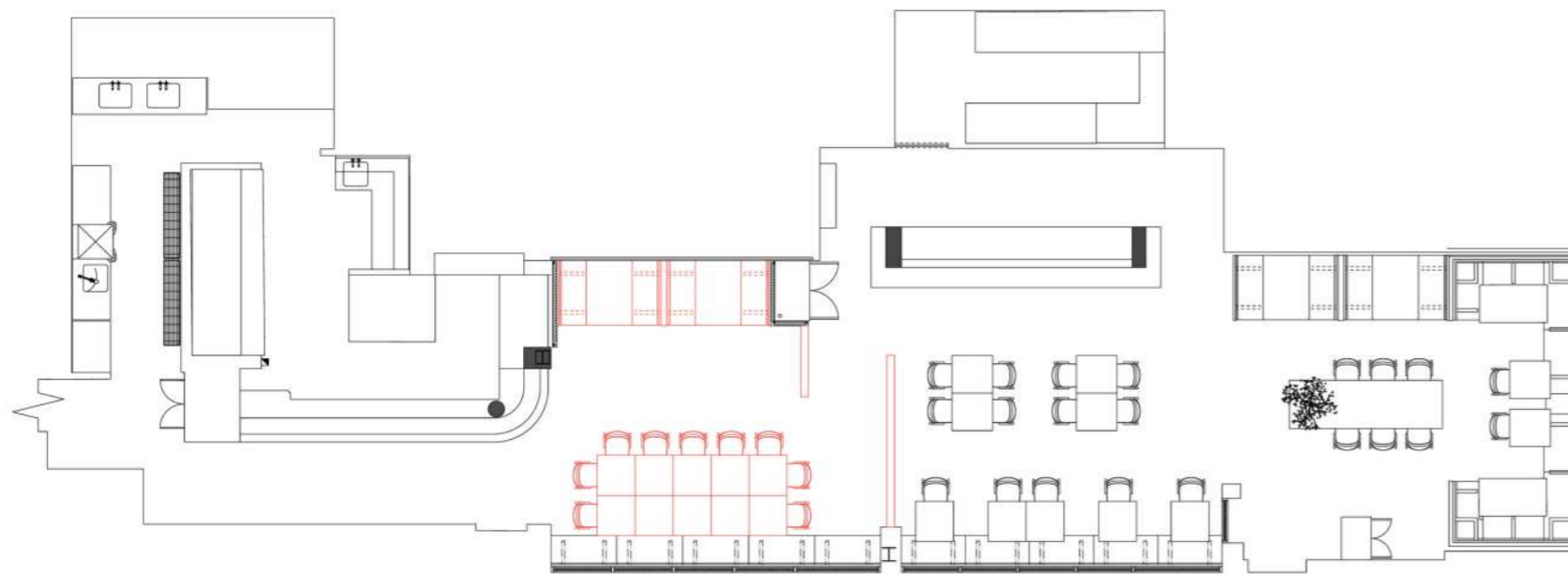


## MEASUREMENTS & LAYOUT

Area	30sqm
Length	8.82m
Width	6m
Height	2.65m
Informal Seating	20 people
Reception	30 people
Private Dining	12 people

# TOKii.

TOKii's distinctive dining experience combines the best elements of Eastern and Western cuisines in a space designed to make guests feel comfortable, unrushed and relaxed. Enjoy fine dining for up to 48 people, or host your drinks reception with canapés for up to a hundred guests. In TOKii, you are afforded a generous space, with the possibility to arrange a podium, large screen or even a stage for speeches and presentations.



## MEASUREMENTS & LAYOUT

Area	77sqm
Length	19.8m
Width	3.9m
Height	2.85m
Semi Private Dining	24 people
<i>For exclusive use only</i>	
Private Dining	65 people
Reception	85 people





WE LOOK FORWARD TO  
WELCOMING YOU.



THE TEAM AT THE  
PRINCE AKATOKI  
LONDON

あ  
り  
が  
と  
う

Our experienced events team are on hand to help  
deliver a perfectly planned event. To book any of our  
premium spaces for your event, please contact :

[kcabrina@theprinceakatokilondon.com](mailto:kcabrina@theprinceakatokilondon.com) or  
call +44 (0) 2077254813  
W: [theprinceakatokilondon.com](http://theprinceakatokilondon.com)