



CARLTON TOWERS

YORKSHIRE



PICTURE PERFECT





The Perfect Location For Filming or Photoshoots

Versatile venue all at one location

Exclusivity provides privacy and security

Victorian Gothic in style

Grand Venetian Ballroom

Quiet rural Yorkshire location

Unlimited car parking for crew and caterers

Accommodation for up to 51 guests

Over 250 acres of private Estate Grounds

Pretty Walled Garden Vineyard

Historic rooms

Impressive grand facade

[CLICK HERE](#) to view the staterooms

Featured In:

MasterChef

ITV Victoria (Series 1&3)

Guest Wing

A Handful Of Dust

Bollywood

Darling Buds Of May

Love, Lies & Records

Netflix & TV Commercials

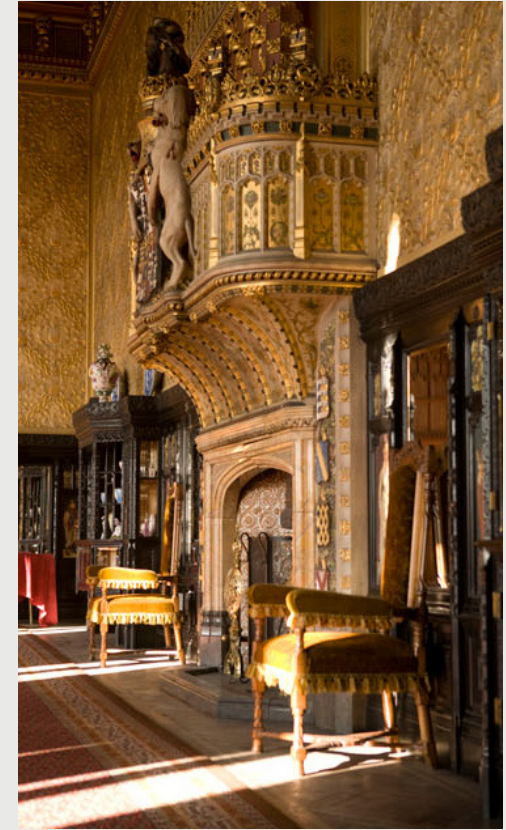




A dramatic Victorian Gothic exterior, imposing clock tower, sweeping staircases, statuesque state rooms, rolling parkland and friendly on-site team, have proved to be an irresistible combination for film, television and location managers since Carlton Towers became home to present owners Lord and Lady Fitzalan Howard.

Productions hosted at the Yorkshire location include the 1988 film "A Handful of Dust" by Evelyn Waugh, where it stood in for Hetton Abbey and 2001 ITV comedy series 'Micawber', starring David Jason.

More recently Carlton Towers was used as a location in two series of ITV lavish costume drama 'Victoria', starring Jenna Coleman. It was also a stand-in for Windsor Castle in BBC drama series 'Love Lies and Records'.



The Carlton Towers team can provide a seamless, professional experience for all visiting crews. The house is a private home and is closed to the public on most days of the year.

Estate Grounds



Carlton Towers offers impressive and versatile outside spaces that can be adapted for many filming schedules including:



250 acres of rolling parkland



Eight acre lily pond lake



Ancient woodlands



Festivals and Fiestas



Walled Garden Vineyard



Farm

Historic Interiors



Boasting an historical pedigree of some 200 years, Carlton Towers offers impressive interiors with many original features including carved wooden panels, magnificent chandeliers, coats of arms, grand marble fireplaces and imposing staircases. The exterior, designed by Pugin is a Gothic fantasy of gargoyles, turrets, and a dominant clock tower.



Venetian Ballroom



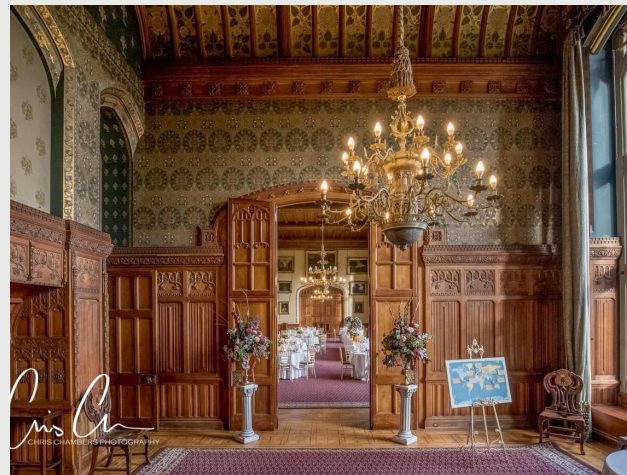
Elegant Staircases



Below Stairs Kitchen and Pantries



Lounges



Painted Gallery



16 Quirky and Individual Bedrooms

Testimonials:



"We all came away incredibly happy from the shoot. Everything location wise was superb and I had multiple people comment on not only how stunning the location was but how great the catering/accommodation was and how accommodating your team were!"

MATTHEW - DIRECTOR, WE ARE INVITE,
PICTURE THIS, MODERN LOVE

"It was genuinely one of the smoothest, friendliest shoots many of us had ever done"

SHINE TV

"You were genuinely a delight to deal with and all the staff could not have been more helpful throughout. A lot of people on the crew said to pass on their thanks"

GARY - LOCATIONS ITV VICTORIA





Virtual tour and
floor plans
Please
[click here](#)

Grid references for helicopter landing:
N53.70632° and W001.01684°
Centrally located in the UK
Close to the A1M & M62

For more information about filming at Carlton Towers, please contact the team on
01405 861662 or email **info@carlontowers.co.uk**



www.carlontowers.co.uk

Carlton Towers, Yorkshire, DN14 9LZ