

select a venue

South London

Greater London & Surrey

Hertfordshire

Buckinghamshire

West London

North London

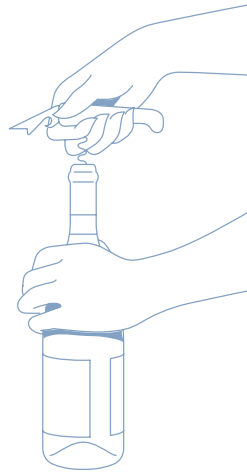


megan's balham

41-43 Bedford Hill, Balham, London, SW12 9EY

Our home in Balham, that we fondly like to call the 'Balhamas', is the perfect location if you're looking for a large party. Begin with drinks in the front of our restaurant, before partying the night away in our fairy-lit conservatory.

Enquire about hiring this space here



Spacious enough to host an event with a DJ so bring your best dancing shoes



CONSERVATORY *from* £1,500

 Seated Capacity x 60  Standing Capacity x 80



WHOLE VENUE *from* £4,250

 Seated Capacity x 132  Standing Capacity x 180



SEMI PRIVATE DINING AREA *from* £500

 Seated Capacity x 18  Standing Capacity x N/A

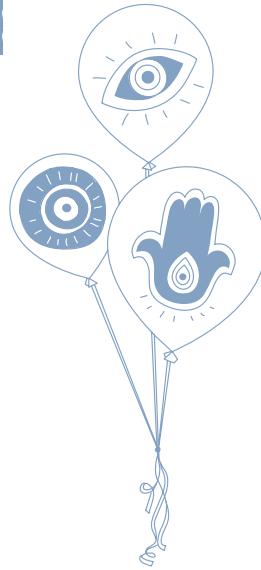


megan's old town

55-57 The Pavement, Clapham, London, SW4 0JQ

In the heart of South-West London, this venue is ideal for a hybrid event, if you would prefer to have guests both seated & standing across multiple areas.

Enquire about hiring this space here

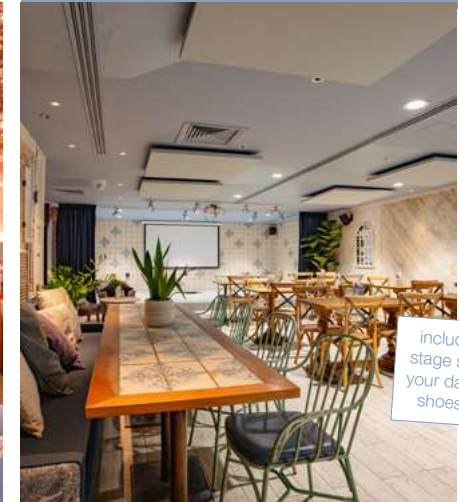


Bi-fold doors to give that holiday feeling

FLOWER AREA from £1,750

Seated x 50 Standing x 80

available from October to March



includes a stage so get your dancing shoes on!

THE LOUNGE from £3,000

Seated x 60 Standing x 70



WHOLE VENUE from £5,750

Seated Capacity x 200 Standing Capacity x 400



Real fairy-lit olive tree in the centre of the room, decorated with hanging Turkish Eyes

TREE ROOM from £2,250

Seated x 50 Standing x 80



megan's wimbledon

86 High Street, Wimbledon, London, SW19 5EG

A romantic setting in the heart of Wimbledon Village, with a large fairy lit booth, which we think is only right to be reserved for the party gal or guy.



[Enquire about hiring this space here](#)



WHOLE VENUE *from* £3,000

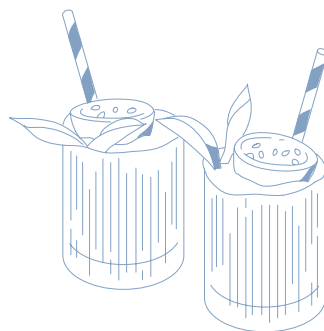
 Seated Capacity x 80  Standing Capacity x 110



megan's wandsworth old town

539-541 Old York Rd, Wandsworth Old Town, London, SW18 1TG

A beautiful location on Old York Road with fairy-lit booths, bi-fold doors & a spacious area for dining.



Enquire about hiring this space here



Sliding doors to allow for a private event

BACK ROOM from £750

 Seated Capacity x 40  Standing Capacity x 50



WHOLE VENUE from £2,250

 Seated Capacity x 90  Standing Capacity x 100



megan's dulwich

25 Dulwich Village, London, SE21 7BN

Megan's in the Hamlet is set across two floors, allowing for the ultimate space to party. With both round marble tables for group dining & a large wooden party table, this space can be used for all occasions!



[Enquire about hiring this space here](#)



WHOLE VENUE from £3,000

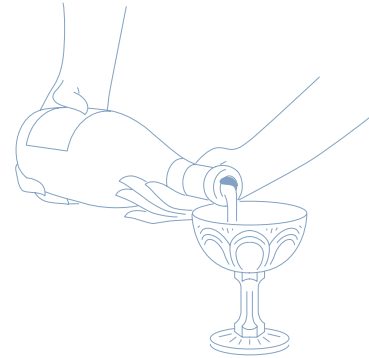
 Seated Capacity x 100  Standing Capacity x 130



megan's east dulwich

99-101 Lordship Lane, London, SE22 9DQ

A spacious venue that will whisk you away to sunnier places with its wicker lights, bi-fold doors & fairy-lit booths. At the heart of the community in East Dulwich, this is your place to party.



[Enquire about hiring this space here](#)



WHOLE VENUE from £2,250

 Seated Capacity x 100  Standing Capacity x 130

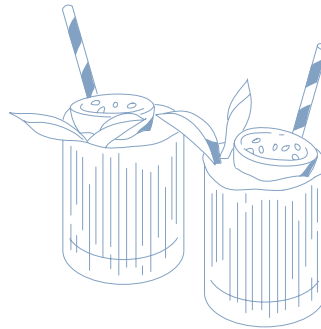


megan's twickenham

25 King Street, Twickenham, TW1 3SU

The magical interiors of Megan's on King Street make for the perfect special occasion venue. With both bi-fold doors & an al fresco garden area, you really will be whisked away to sunny places with a true feeling of being in the Med. Bonus points if you can guess how many fairy lights the restaurant has been adorned with...

Enquire about hiring this space here



have these two spaces together for an indoor/outdoor occasion



GARDEN from £1,750

 Seated x 35  Standing x 40

PLANT ROOM from £1,550

 Seated x 30  Standing x 35



PRIVATE DINING ROOM from £300

 Seated Capacity x 10  Standing Capacity N/A



al fresco dining available in the magical garden

WHOLE VENUE from £4,250

 Seated Capacity x 168  Standing Capacity x 200



megan's richmond

13 Hill Street, Richmond, London, TW9 1SX

Our riverside home is spread across two floors to make for the ultimate party venue for you & your guests. Begin with drinks upstairs, before taking a seat downstairs for the dinner party... Or vice versa! With so many areas across the restaurant, you have plenty of space to plan your dream occasion. Can you spot our tribute to the local area too?



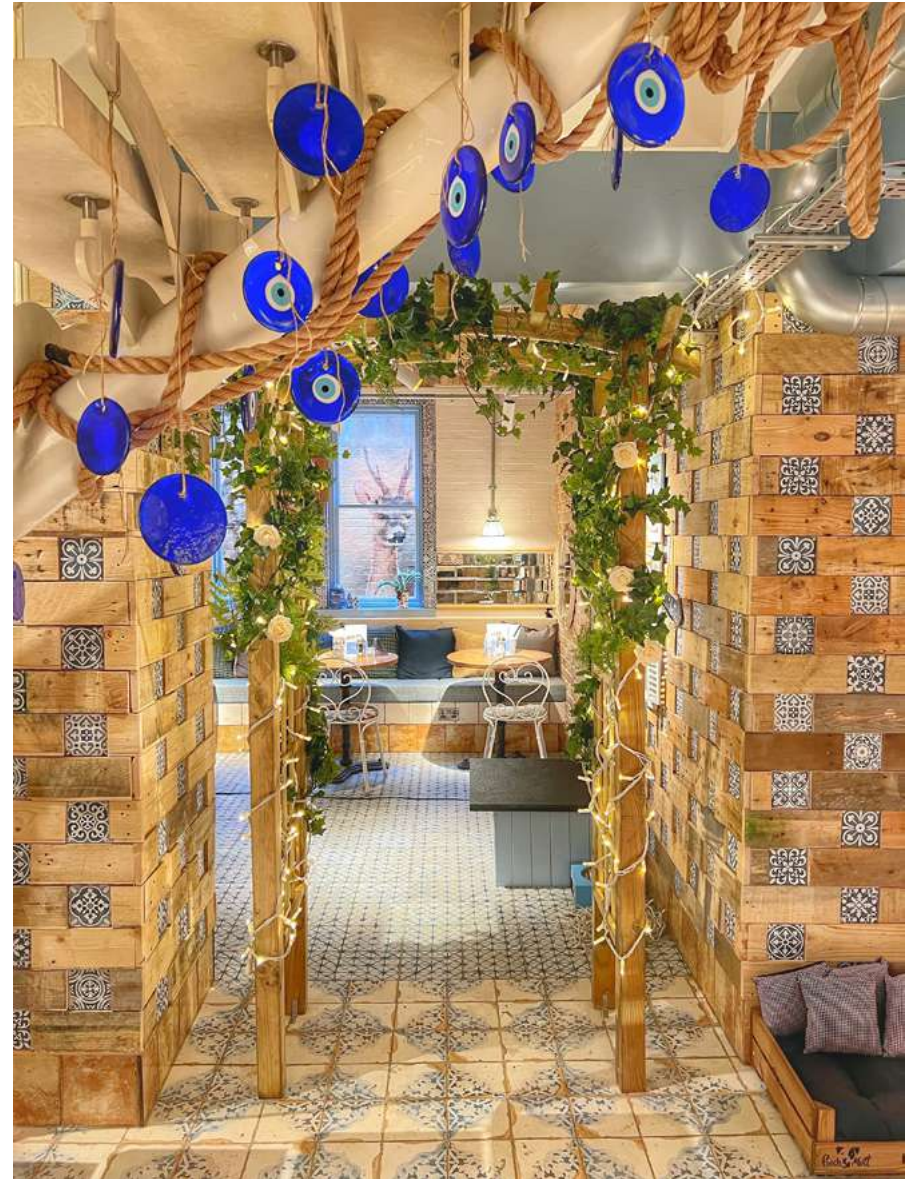
Enquire about hiring this space here

Walk through the archway to find this intimate dining area



DOWNSTAIRS from £1,500

 Seated Capacity x 45  Standing Capacity x 60



WHOLE VENUE from £4,500

 Seated Capacity x 123  Standing Capacity x 140

megan's parsons green

70 Parsons Green Ln, London SW6 4HU

Just a stone's throw from the station, our Parsons Green home is a magical venue for your next special occasion. With stained glass features, a wooden canoe & a wonderful wall of mirrors, this venue is sure to wow your guests. You also have the choice of hiring the full venue for your event, or the semi-private dining if you'd prefer a more intimate occasion.

Enquire about hiring this space here



SEMI-PRIVATE ROOM from £1,000

 Seated Capacity x 22  Standing Capacity x 30



WHOLE VENUE from £4,000

 Seated Capacity x 120  Standing Capacity x 130

megan's surbiton

38 Victoria Road, Surbiton, London, KT6 4JL

A large, spacious venue allowing your event to be split into drinks at the front, party at the back.

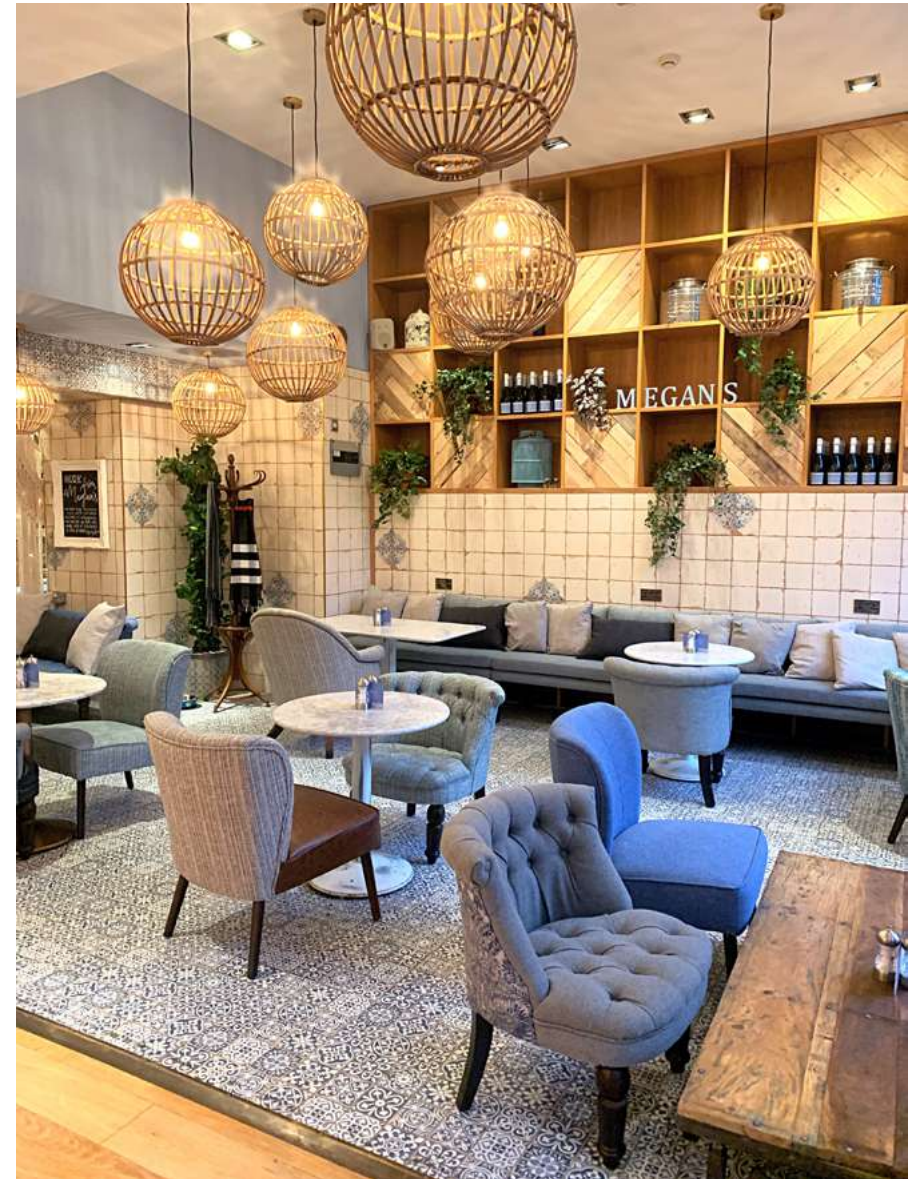


Enquire about hiring this space here



BACK ROOM from £1,500

 Seated Capacity x 50  Standing Capacity x 60



WHOLE VENUE from £3,500

 Seated Capacity x 150  Standing Capacity x 180

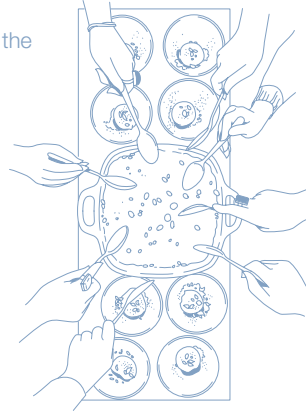


megan's kingston upon thames

2 Market Place, Kingston Upon Thames, London, KT1 1JT

A spacious venue in the heart of Kingston. Follow the magical stairway to the second floor where our upstairs space overlooks the market square.

Enquire about hiring this space here



Long party table, ideal for a foodie spread



SEMI-PRIVATE ROOM *from £250*

Seated Capacity x 12 Standing Capacity x N/A



WHOLE VENUE *from £3,000*

Seated Capacity x 140 Standing Capacity x 160



UPSTAIRS *from £1,000*

Seated Capacity x 32 Standing Capacity x 50

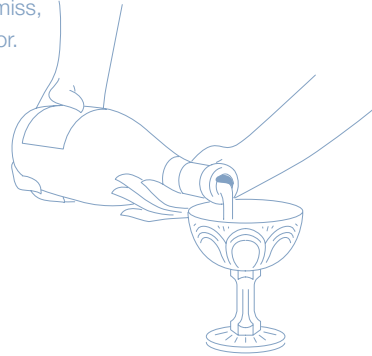


megan's guildford

136-140 High Street, Guildford, GU1 3HJ

Two floors with lots of different rooms to host your party. No need to choose between a DJ or a photobooth, when you have space for both at your party! The sky light is a feature that you can't miss, dressed with foliage & Turkish Eyes for the ultimate 'wow' factor.

Enquire about hiring this space here



FIRST FLOOR from £2,500

 Seated Capacity x 70  Standing Capacity x 80



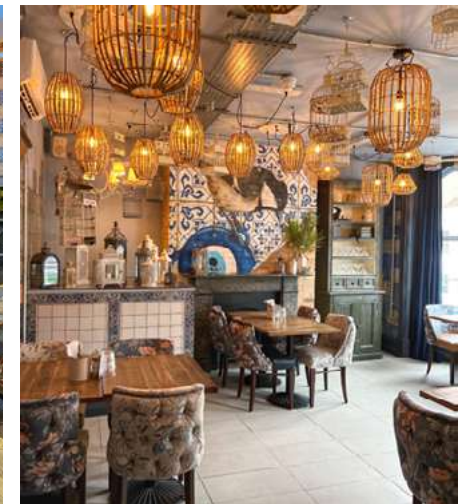
WHOLE VENUE from £5,000

 Seated Capacity x 125  Standing Capacity x 160



PRIVATE DINING ROOM from £750

 Seated x 18  Standing x 25



BIRDCAGE AREA from £750

 Seated x 18  Standing x 28

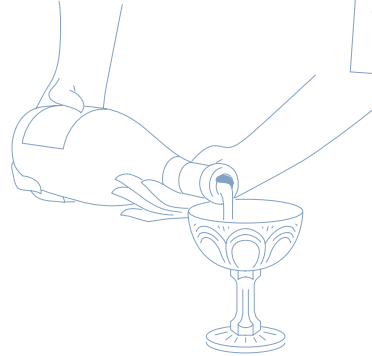


megan's kensington high street

204 Kensington High Street, Kensington, London, W8 7RG

Our most central location in London, this venue can host a large party across two floors, with beautiful wicker lighting to whisk you away to the Mediterranean.

Enquire about hiring this space here



Projector screen & microphone available

DOWNSTAIRS LOUNGE from £2,750

Seated Capacity x 60 Standing Capacity x 80



WHOLE VENUE from £5,750

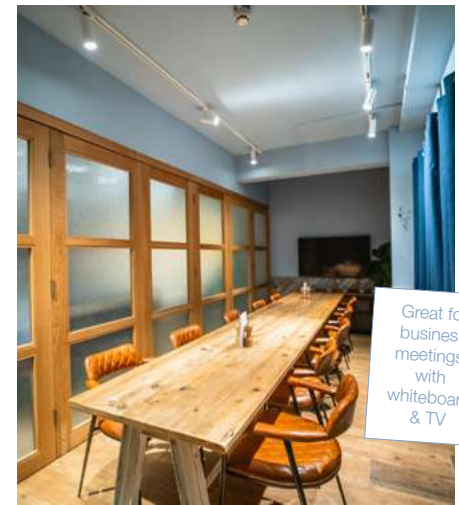
Seated Capacity x 160 Standing Capacity x 180



A ceiling full of hanging Turkish Eyes to create an immersive dining experience, slightly curtained off from main restaurant

EVIL EYE AREA from £750

Seated x 18 Standing x 20



Great for business meetings, with whiteboard & TV

MEETING ROOM from £250

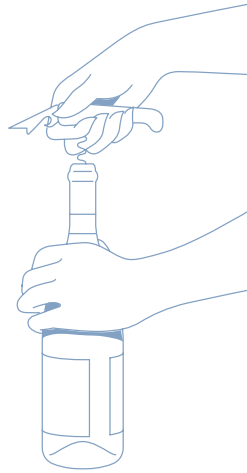
Seated x 10 Standing x N/A



megan's chiswick

214 Chiswick High Road, Chiswick, London, W4 1SD

A tropical oasis in the bustling neighbourhood of Chiswick with a hanging canopy of foliage in the centre of the restaurant.



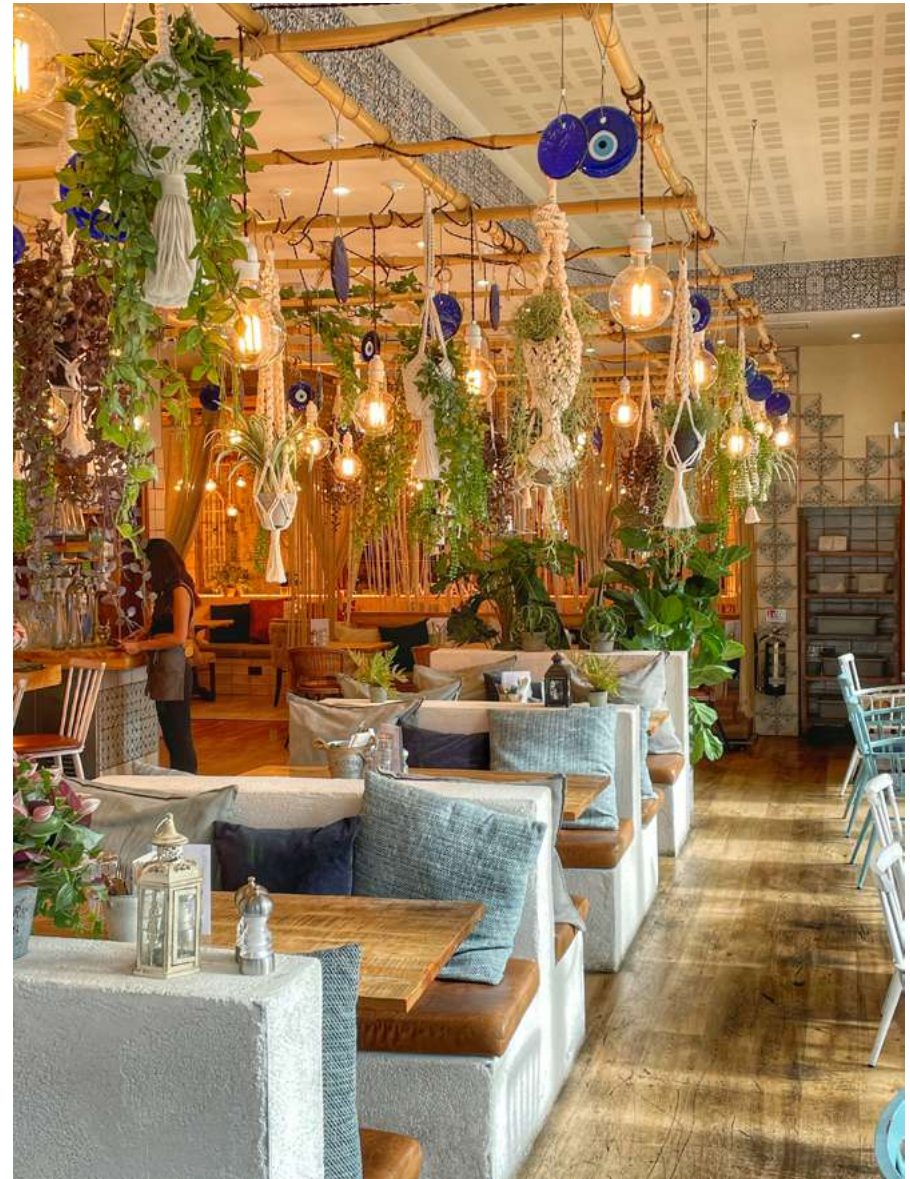
Enquire about hiring this space here



Private area away from the central restaurant. Comfortable & intimate

RAISED DINING AREA from £500

Seated Capacity x 22 Standing Capacity x N/A



WHOLE VENUE from £2,500

Seated Capacity x 62 Standing Capacity x 85

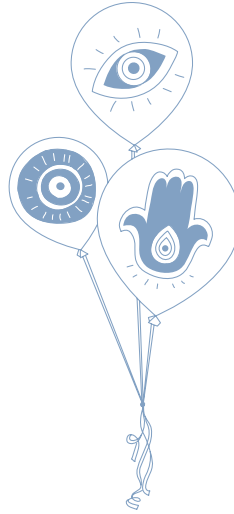


megan's islington

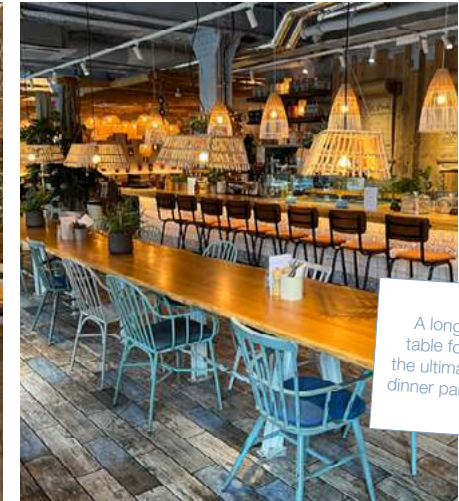
6 Esther Anne Place, Islington, London, N1 1WF

Our hidden gem in North London is the perfect place to party. A great option for a hybrid group of both seated & standing guests with multiple areas across the restaurant.

Enquire about hiring this space here



DINING AREA from £2,500
Seated x 80 Standing x N/A



A long table for the ultimate dinner party!

LONG TABLE from £1,000
Seated x 35 Standing x 50



WHOLE VENUE from £5,000

Seated Capacity x 150 Standing Capacity x 250



LOUNGE from £1,000

Seated x 30 Standing x 40



DELI + LOUNGE from £2,250

Seated x 70 Standing x 90

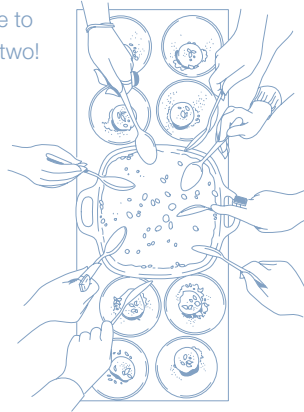


megan's st. albans

22 Chequer Street, St. Albans, Hertfordshire, AL1 3YD

A versatile space; Different corners of the restaurant allow space to have a DJ, photo booth & even a dance floor... After a drink or two!

Enquire about hiring this space here



Attached is a small lounge room, ideal to enjoy canapés



PRIVATE DINING ROOM *from* £250

Seated Capacity x 12 Standing Capacity x 20



WHOLE VENUE *from* £5,000

Seated Capacity x 140 Standing Capacity x 180



LOUNGE (L) *from* £750

Seated x 20 Standing x 30



LOUNGE (R) *from* £750

Seated x 20 Standing x 30



megan's welwyn garden city

35-37 Howardsgate, Welwyn Garden City, AL8 6AP

The hanging ceiling of Turkish Eyes is a true centre piece, making our Welwyn Garden City home a stunning place to party. Just a short walk from the station, this spacious restaurant is perfect for all occasions!



[Enquire about hiring this space here](#)



WHOLE VENUE *from* £3,000

 Seated Capacity x 120  Standing Capacity x 150

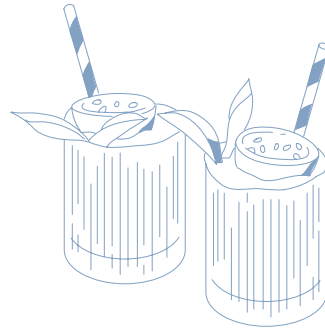


megan's marlow

21 High St, Marlow, SL7 1AU

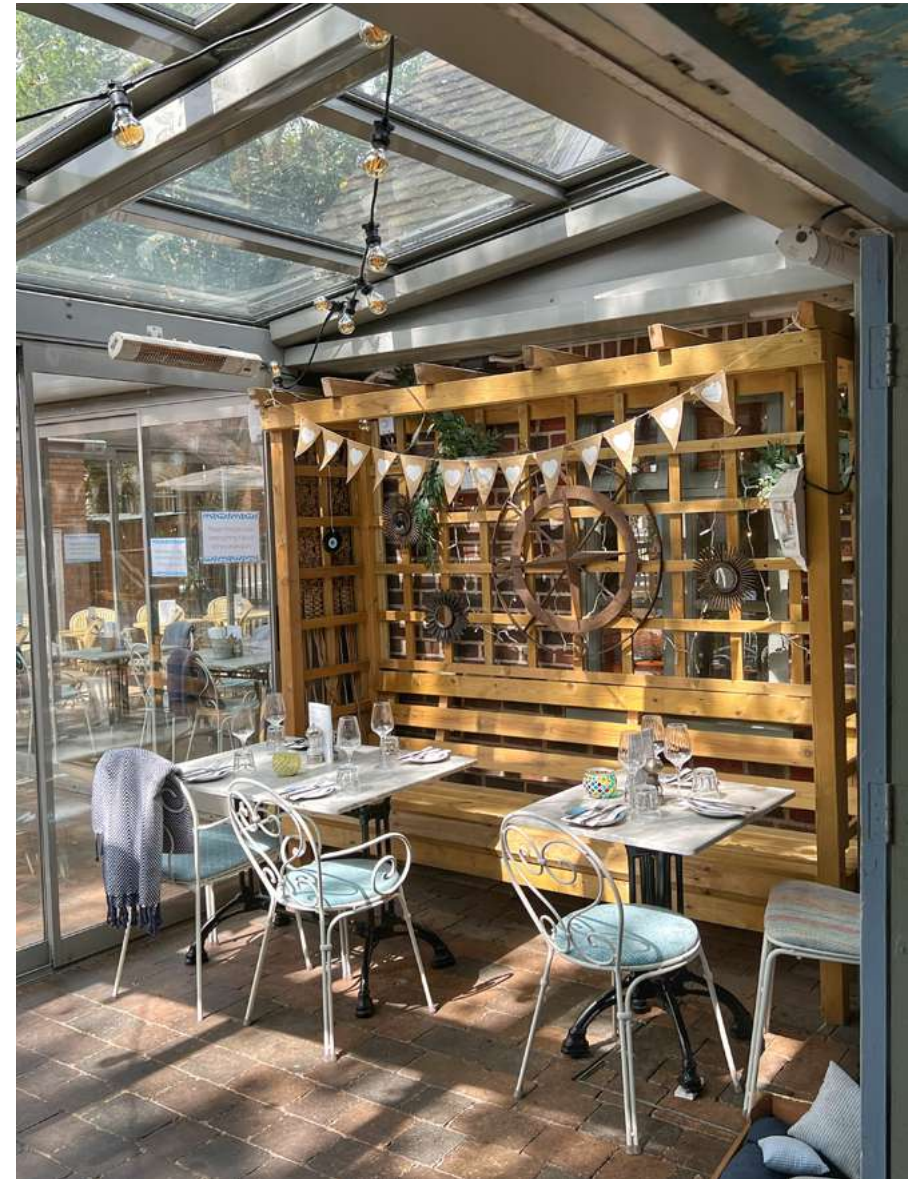
Our home in Buckinghamshire is located in a listed building that still has its original wooden beams & beautiful chandelier that once held live candles. With so much history, why not add your party to the story of Megan's at Liston Court?

Enquire about hiring this space here



WHOLE VENUE from £3,000

 Seated Capacity x 90  Standing Capacity x 110



BACK CONSERVATORY from £1,750

 Seated Capacity x 40  Standing Capacity x 50



megan's weybridge

17-19 Church Street, Weybridge, KT13 8DE

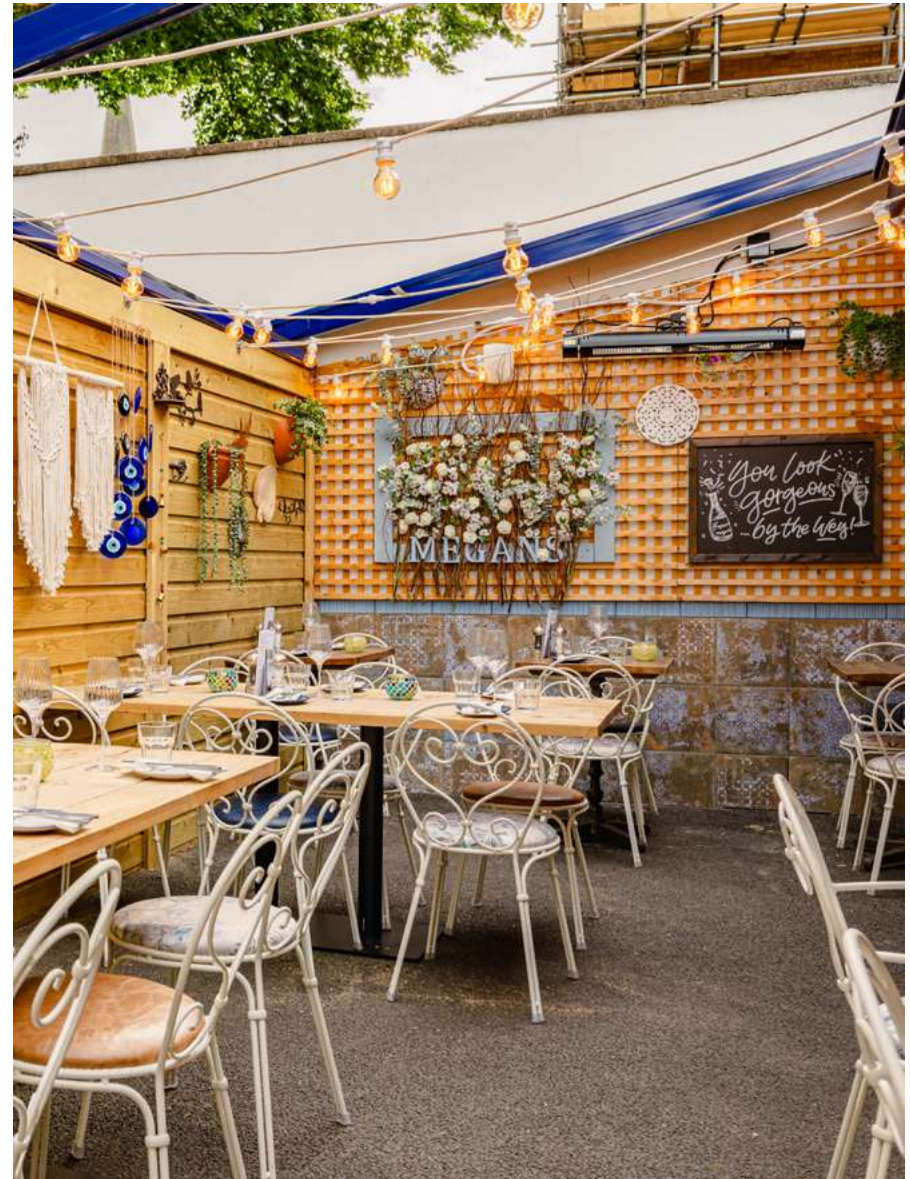
Our Surrey home brings the magic to Church Street with its twinkly interiors, fairy-lit booths & beautiful al fresco garden area. By the way, we've been voted as the most romantic restaurant in London & we're known for our party-throwing skills so join us for your next special occasion. We host everything from birthdays, to baby showers, to engagement parties & weddings!

Enquire about hiring this space here



WHOLE VENUE from £5,000

 Seated Capacity x 126  Standing Capacity x 140



GARDEN from £1,000

 Seated Capacity x 22  Standing Capacity x 30



minimum spends

			Mon-Thu Day/Eve	Fri Day/Eve & Sat/Sun Eve	Sat-Sun Brunch
Balham	Seated	Standing			
Whole Venue	132	180	£4,250	£5,000	£7,000
Conservatory	60	80	£1,500	£2,000	£4,000
Semi Private Dining Room	18	N/A	£500	£750	£1,250
Battersea	Seated	Standing			
Whole Venue	90	90	£15,000	£17,500	N/A
Chiswick	Seated	Standing			
Whole Venue	62	85	£2,500	£3,500	£5,000
Semi Private Dining Room	20	N/A	£500	£750	£1,500
Private Dining room	22	N/A	£750	£1,000	£1,750
Clapham Old Town	Seated	Standing			
Whole Venue	200	400	£5,750	£8,000	£12,000
Tree Room	50	80	£2,250	£3,000	£4,500
Flower Ceiling Area	50	80	£1,750	£2,500	£3,750
Downstairs Lounge	60	70	£3,000	£3,500	£4,000
Dulwich	Seated	Standing			
Whole Venue	100	130	£3,000	£4,000	£6,000
East Dulwich	Seated	Standing			
Whole Venue	100	130	£2,250	£3,000	£5,000
Guildford	Seated	Standing			
Whole Venue	125	160	£5,000	£6,500	£10,000
Private Dining Room	18	25	£750	£1,000	£1,500
Birdcage Area	18	28	£750	£1,000	£1,500
First Floor	70	80	£2,500	£3,500	£5,250
High Street Kensington	Seated	Standing			
Whole Venue	160	180	£5,750	£8,000	£12,000
Evil Eye Area	18	20	£750	£1,000	£1,500
Downstairs Meeting Room	10	N/A	£250	£500	£500
Downstairs Lounge	60	80	£2,750	£3,000	£4,250
Islington	Seated	Standing			
Whole Venue	150	250	£5,000	£7,500	£10,500
Main Dining Area	80	N/A	£2,500	£3,500	£5,000
Long Table	35	50	£1,000	£1,500	£2,000
Lounge	30	40	£1,000	£1,250	£2,000
Deli + Lounge	70	90	£2,250	£3,000	£4,000

All minimum spends are from prices & subject to service charge

Contact our team at parties@megans.co.uk to create a bespoke package & offering

			Mon-Thu Day/Eve	Fri Day/Eve & Sat/Sun Eve	Sat-Sun Brunch
Kingston Upon Thames	Seated	Standing			
Whole Venue	140	160	£3,000	£4,500	£6,500
Upstairs	32	50	£1,000	£1,250	£2,000
Semi Private Dining Room	12	N/A	£250	£250	£250
Marlow	Seated	Standing			
Whole Venue	90	110	£3,000	£3,500	£5,000
Back conservatory	40	50	£1,750	£2,000	£2,500
Parsons Green	Seated	Standing			
Whole Venue	120	130	£4,000	£6,000	£8,500
Semi Private Dining Room	22	30	£1,000	£1,250	£1,750
Richmond	Seated	Standing			
Whole Venue	123	140	£4,500	£6,250	£9,250
Downstairs	45	60	£1,500	£2,500	£3,000
St Albans	Seated	Standing			
Whole Venue	140	180	£5,000	£7,500	£10,000
Lounge (left)	20	30	£750	£1,250	£1,500
Lounge (right)	20	30	£750	£1,250	£1,500
Private Dining Room	12	20	£250	£500	£750
Surbiton	Seated	Standing			
Whole Venue	150	180	£3,500	£4,500	£7,000
Back Room	50	60	£1,500	£1,750	£2,000
Twickenham	Seated	Standing			
Whole Venue	168	200	£4250	£5000	£7000
Private Dining Room	10	N/A	£300	£500	
Garden	35	40	£1750	£2250	£2750
Plant Room	30	35	£1550	£2000	£2250
Garden + Plant Room	65	70	£3,300	£4,250	£5,000
Wandsworth Old Town	Seated	Standing			
Whole Venue	90	100	£2,250	£3,000	£4,500
Back Room	40	50	£750	£1,000	£1,500
Welwyn Garden City	Seated	Standing			
Whole Venue	120	150	£3,000	£5,000	£7,500
Weybridge	Seated	Standing			
Whole Venue	126	140	£5,000	£7,500	£10,000
Garden	22	30	£1,000	£1,250	£2,000
Wimbledon	Seated	Standing			
Whole Venue	80	110	£3,000	£4,000	£6,000



Sharing menu available from 11am on weekdays & from 2.30pm on weekends

DRINKS PACKAGES

CHAMPAGNE BY THE GLASS 12.5PP

one glass lanson (125ml)

DRINKS PACKAGE 15.9PP

one welcome drink, plus half a bottle of house wine or two beers per person

CHAMPAGNE DRINKS PACKAGE 26.9PP

glass of champagne on arrival, plus half a bottle of sauvignon blanc, malbec or mirabeau rosé or two beers per person

PARTY DRINKS PACKAGE 29.9PP

two welcome drinks (not inc. champagne), half a bottle of house wine or two beers per person & a round of espresso martinis to finish

ROUND OF ESPRESSO MARTINIS 11.9PP

our megan's favourite

MAGNUM 55

rioja magnum. discounted to 55 if preordered. full price if ordered on the day

BUY 10 GET ONE FREE

buy 10 of the same bottle of wine or sparkling wine & get an extra one for free, preorder only

SUMMER SHARING

2 COURSES 29.5PP

3 COURSES 34.5PP

THE STARTER BOARD

a feast of charcuterie, cheese fondue, padron peppers, halloumi fries, labneh, harissa hummus & rocket

served with flatbread & 7 seeded sourdough

THE MAIN BOARD

pick two options as a group

feeling hungry? add a third option for an additional cost. Please enquire at the time of booking.

chargrilled chicken thigh

lamb kofta & pulled lamb shoulder (+£2.5pp)

crispy sea bass fillet (+£2.5pp)

falafel, vegan lamb & tenderstem (vg)

grilled halloumi (v)

served with salad, tabbouleh, fries & sweet potato fries

THE DESSERT BOARD

pick one option

giant half-baked nutella cookie dough & vanilla ice cream

treat tower

with baklava, brownies, nutella cookie, strawberries, blueberries & vanilla ice cream

CHRISTMAS FEASTING

Available from 13th November

Monday - Tuesday Wednesday - Sunday

2 courses 28.5pp

2 courses 35.5pp

3 courses 32.5pp

3 courses 39.5pp

4 courses 36.5pp

4 courses 43.5pp

STARTER

selection of sharing mediterranean-inspired, festive starters including buttermilk fried chicken with cranberry & date dip, crispy brussels on labneh, hot honey pigs in blankets & christmas fondue w/ bacon wrapped dates

served with flatbread, pita & organic sourdough

MAIN

feasting board featuring a selection of turkey, lamb kofte, sucuk, oyster mushrooms & halloumi skewers along with our favourite best selling arayes pita

served with a selection of festive sides & flatbread, stuffing & sauces

DESSERT

giant half-baked festive cookie dough

TO FINISH

mulled wine, mince pie & frospresso shot (frozen espresso martini)

Festive set menu & canapé menu available too.



Includes a cracker per person

TURKISH BRUNCH FEAST

16.9PP

a sweet & savoury sharing platter: shakshouka baked eggs, turkish cheese fondue, avo, harissa hummus, grilled halloumi OR sucuk, flatbread & sourdough served with nutella, sesame halva cream & blueberry compote to dip

THE CANAPÉ MENU

CHOOSE 5 OPTIONS 19PP

we prepare enough for your entire party. only for standing events

labneh & pomegranate crostini v
mini smashed avo on sourdough toast vg
sucuk 'turkish chorizo' bites w/ honey glaze
halloumi & kalamata olive skewers v
halloumi fries v
falafel & harissa hummus vg
mini chicken shizh w/ piri piri
chilli garlic prawns
calamari w/ piri piri & garlic yoghurt

ENQUIRE FOR YOUR PARTY HERE

