

BANKSIDE

AUTOGRAPH COLLECTION®  
HOTELS

*The art of*

# MEETING & EVENTS







*Creative, versatile and flexible. Our meeting spaces shun the traditional in favour of inspiration. Meeting rooms mirror the hotel's mid-century residential feel, whilst our White Box is heaven-sent for corporate creatives, fashion brands in fact any group needing a blank space for a corporate or social occasion.*

*We think outside the box to ensure your visions are met. Our team work with you to offer the space, the food and the perfect amount of creativity needed for a successful meeting or event.*

								
<b>THEATRE</b>	<b>CLASSROOM</b>	<b>U-SHAPE</b>	<b>HOLLOW SQ</b>	<b>BOARDROOM</b>	<b>CABARET</b>	<b>BANQUET</b>	<b>COCKTAILS</b>	<b>STANDING</b>

	THEATRE	CLASSROOM	U-SHAPE	HOLLOW SQ	BOARDROOM	CABARET	BANQUET	COCKTAILS	STANDING
MEETING ROOM 1	80	24	24	30	24	40	48	90	90
MEETING ROOM 2	90	24	24	30	24	40	48	100	100
MEETING ROOM 3	90	24	24	30	24	40	48	100	100
MEETING ROOM 2&3	160	48	38	44	36	80	120	200	200
WHITE BOX	200	60	24+24	30+30	38+38*	108	160	250	250
MEZZANINE	30	n/a	n/a	n/a	16	n/a	n/a	60	60
TERRACE	n/a	n/a	n/a	n/a	24	n/a	n/a	40	40
PRIVATE DINING ROOM	40	12	18	24	32	32	48	50	50

\*86 is possible (38+24+24)



Lower ground



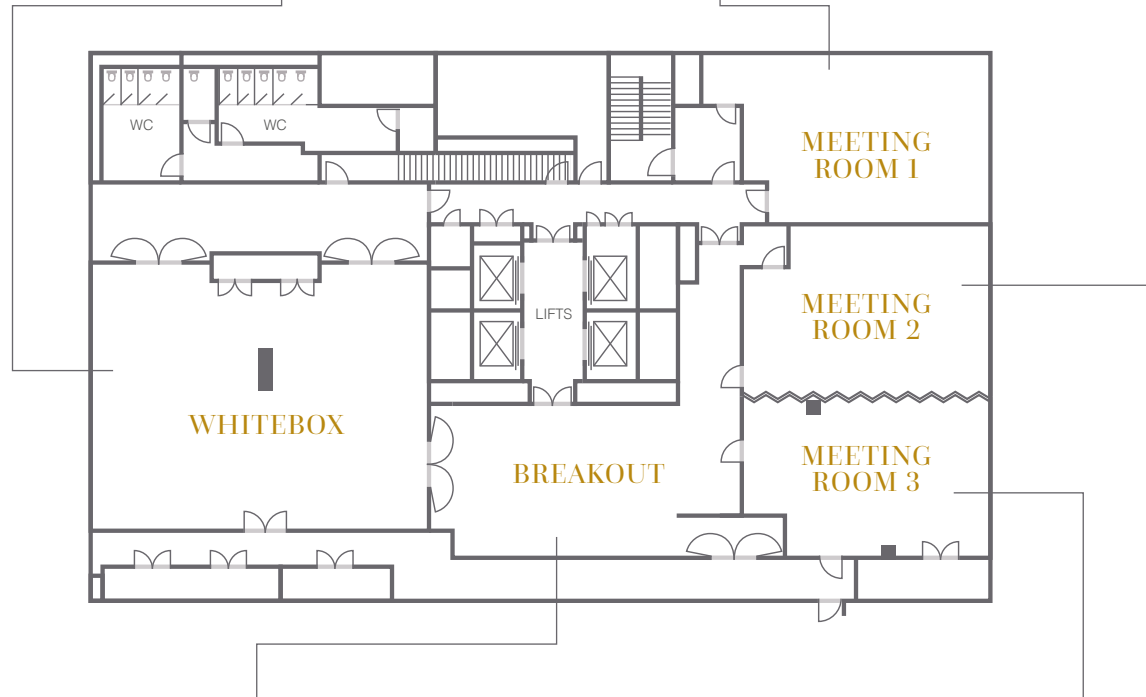
**169m<sup>2</sup>**  
WHITE BOX



**79m<sup>2</sup>**  
MEETING ROOM 1



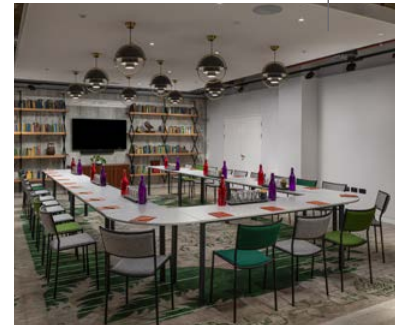
**80m<sup>2</sup>**  
MEETING ROOM 2



**52m<sup>2</sup>**  
BREAKOUT SPACE



**146m<sup>2</sup>**  
MEETING ROOM 2&3 COMBINED



**66m<sup>2</sup>**  
MEETING ROOM 3

# OUR SPACES

First Floor

**116m<sup>2</sup>**  
TERRACE



**114.3m<sup>2</sup>**  
MEZZANINE



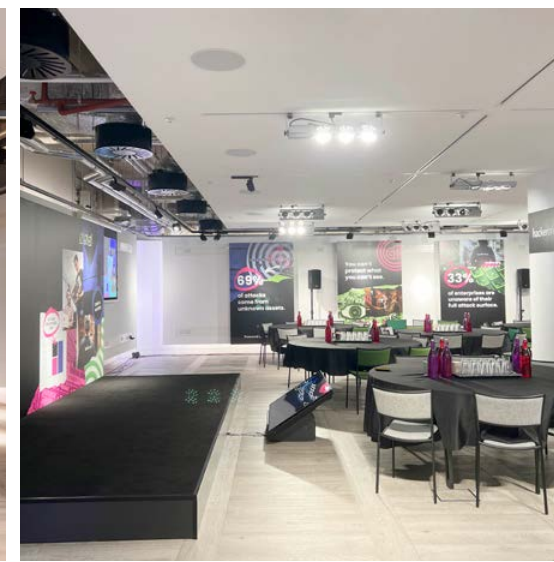
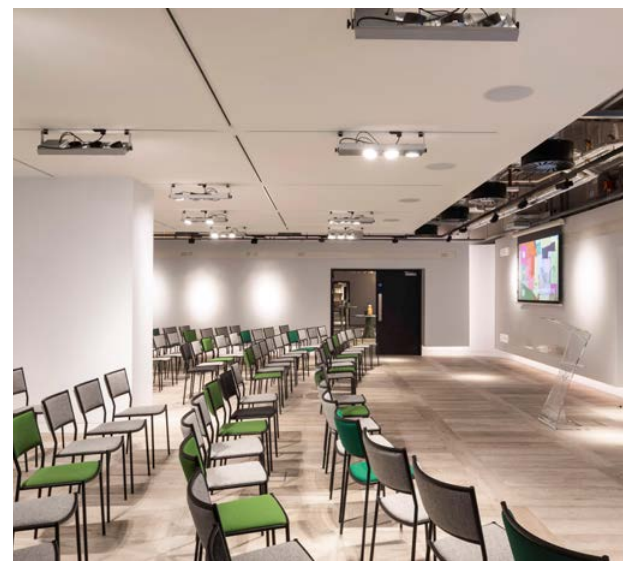
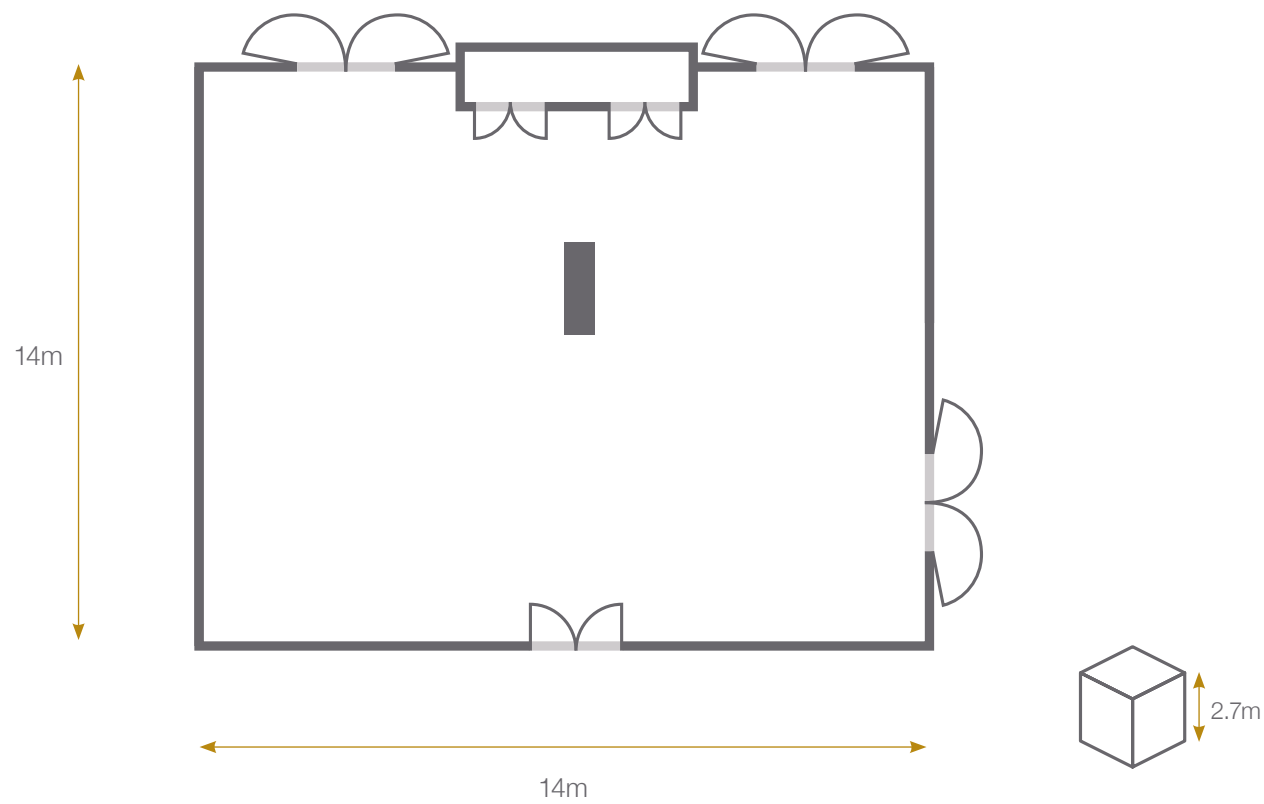
**48.94m<sup>2</sup>**  
ART YARD PRIVATE DINING ROOM





# WHITE BOX - 169M<sup>2</sup>

*So called, because it's just that. A generously proportioned blank space, where you create what suits you, because at Bankside we don't like imposing our taste on your event, we leave that up to you.*



## PERFECT FOR

- Photoshoots
- Pop-up events
- Classes
- Workshops
- Exhibitions
- Conferences
- Screenings
- Launch events
- Parties
- Dinners
- Cocktail reception



High speed internet  
(1 Gbps - both ways)



Moveable lighting  
rigs



65 inch TV screens



Fully air- conditioned



DB audio PA system



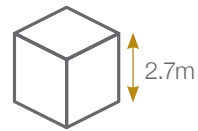
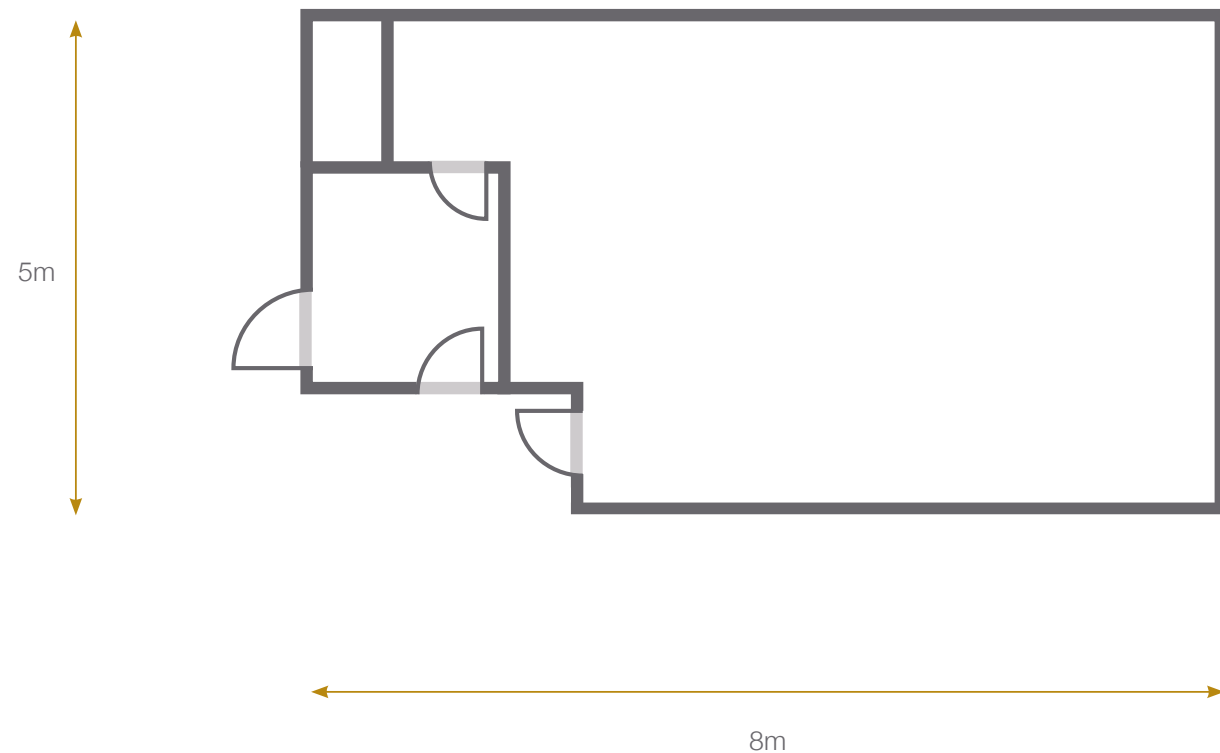
Electronic signage

<b>THEATRE</b>	<b>CLASSROOM</b>	<b>U-SHAPE</b>	<b>HOLLOW SQ</b>	<b>BOARDROOM</b>	<b>CABARET</b>	<b>BANQUET</b>	<b>COCKTAILS</b>	<b>STANDING</b>
200	60	24+24	30+30	38+38*	108	160	250	250



# MEETING ROOM 1 - 79M<sup>2</sup>

*Our splendid boardroom with a large marble table, perfect for those looking to impress. Tucked away from the breakout spaces, the ideal choice for those looking for ultimate privacy.*




- |   |   |   |   |   |   |   |   |   |
|---|---|---|---|---|---|---|---|---|
|  |  |  |  |  |  |  |  |  |
| <b>THEATRE</b>  | <b>CLASSROOM</b>  | <b>U-SHAPE</b>  | <b>HOLLOW SQ</b>  | <b>BOARDROOM</b>  | <b>CABARET</b>  | <b>BANQUET</b>  | <b>COCKTAILS</b>  | <b>STANDING</b>   |
| 80  | 24  | 24  | 30  | 24  | 40  | 48  | 90  | 90  |





## PERFECT FOR


- Board meetings
- Meetings
- Private dinners
- Workshops
- Classes
- Board meetings

 High speed internet  
(1 Gbps - both ways)

 Moveable lighting  
Rigs

 65 inch TV screens

 Fully air- conditioned

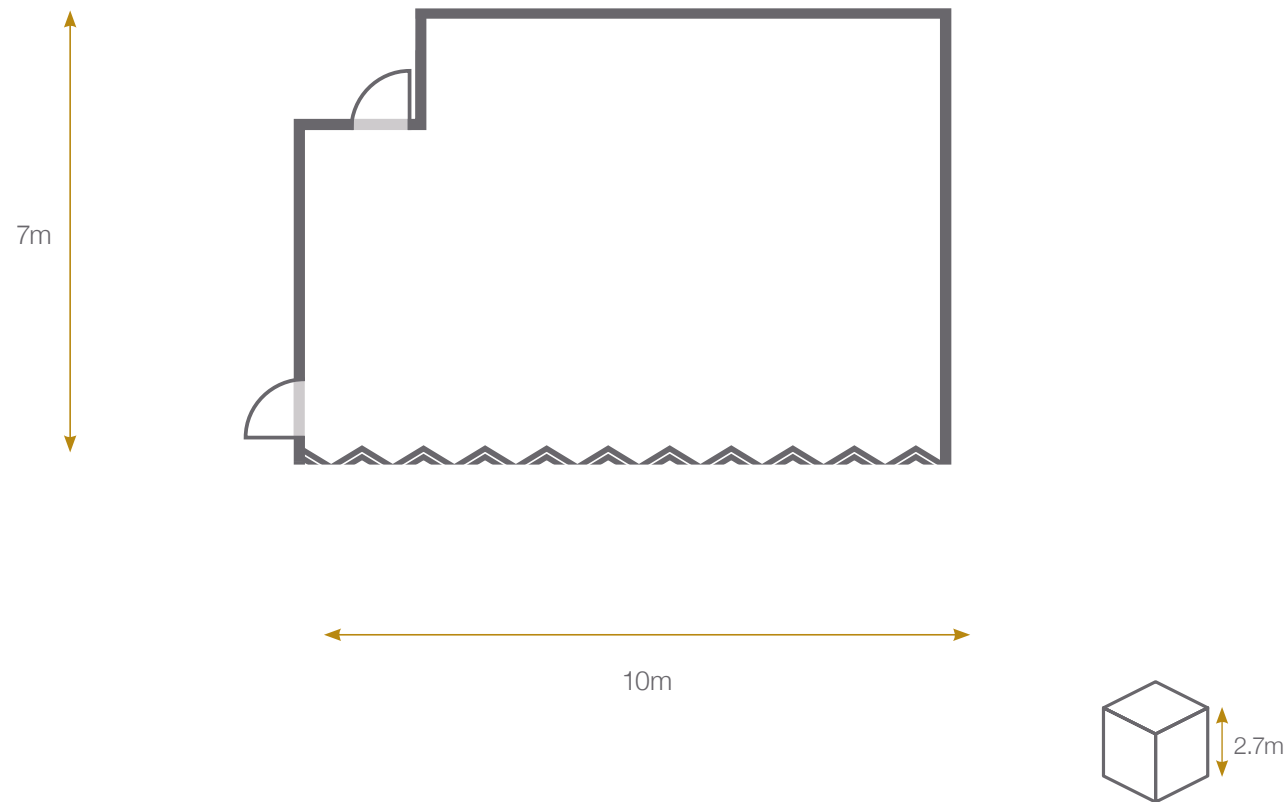
 DB audio PA system


 Electronic signage



# MEETING ROOM 2 - 80M<sup>2</sup>







Our largest single Meeting Room, spacious in size (can be even bigger if combined with Meeting Room 3), with all the technology bits & pieces that you need to have a successful meeting, or whatever use you come up with.



- |   |   |   |   |   |   |   |   |   |
|---|---|---|---|---|---|---|---|---|
|  |  |  |  |  |  |  |  |  |
| <b>THEATRE</b>  | <b>CLASSROOM</b>  | <b>U-SHAPE</b>  | <b>HOLLOW SQ</b>  | <b>BOARDROOM</b>  | <b>CABARET</b>  | <b>BANQUET</b>  | <b>COCKTAILS</b>  | <b>STANDING</b>   |
| 90  | 24  | 24  | 30  | 24  | 40  | 48  | 100   | 100   |

## PERFECT FOR

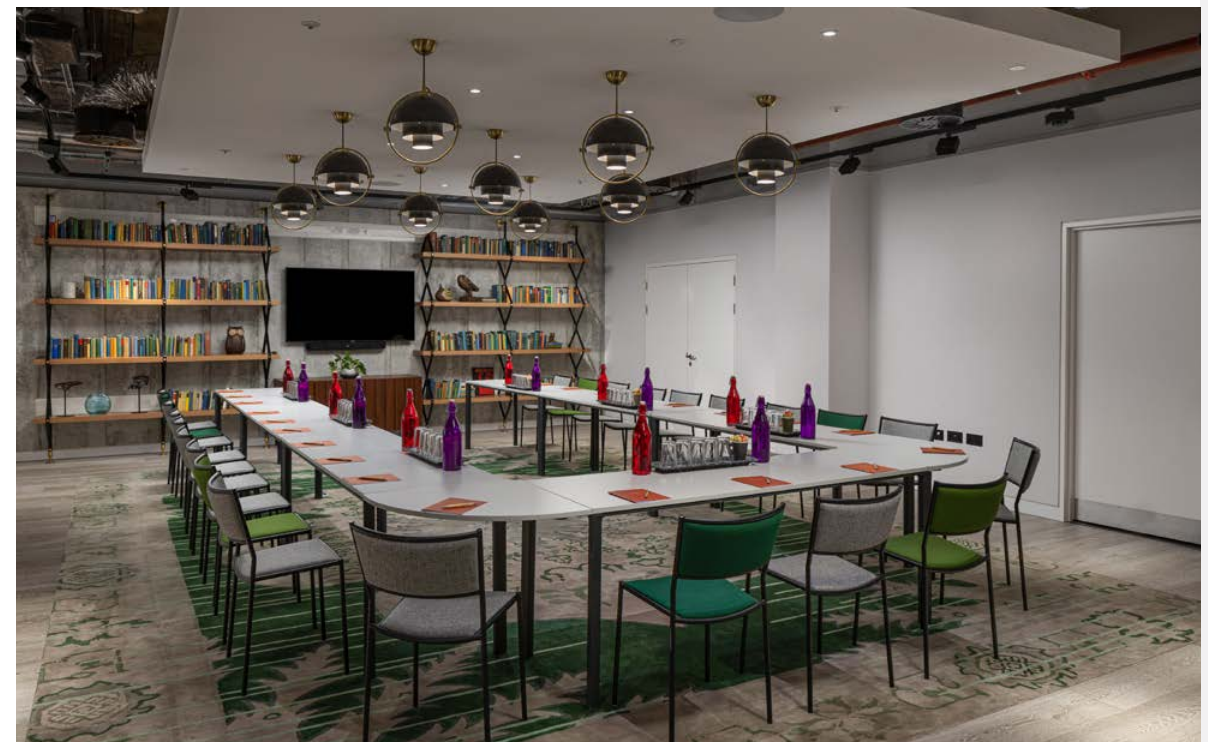
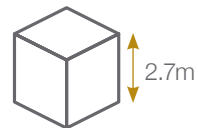
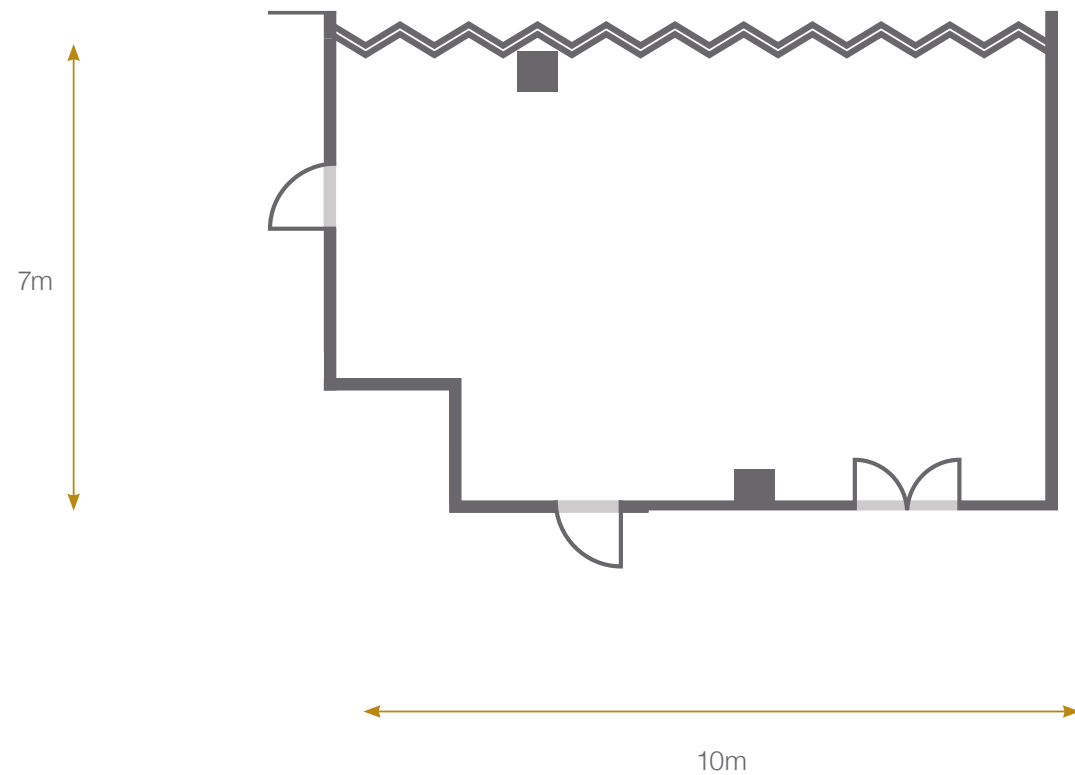
- Conferences
- Exhibitions
- Workshops
- Classes
- Pop-up events

-  High speed internet (1 Gbps - both ways)
-  Moveable lighting rigs
-  65 inch TV screens
-  Fully air- conditioned
-  DB audio PA system
-  Electronic signage



# MEETING ROOM 3 - 66M<sup>2</sup>

*Our smallest meeting room, which if combined with Meeting Room 2, surprisingly grows larger in size. However it is just as lovely booked on its own.*



- |   |   |   |   |   |   |   |   |   |
|---|---|---|---|---|---|---|---|---|
|  |  |  |  |  |  |  |  |  |
| <b>THEATRE</b>  | <b>CLASSROOM</b>  | <b>U-SHAPE</b>  | <b>HOLLOW SQ</b>  | <b>BOARDROOM</b>  | <b>CABARET</b>  | <b>BANQUET</b>  | <b>COCKTAILS</b>  | <b>STANDING</b>   |
| 90  | 24  | 24  | 30  | 24  | 40  | 48  | 100   | 100   |

## PERFECT FOR

- Conferences
- Exhibitions
- Workshops
- Classes
- Pop-up events



High speed internet  
(1 Gbps - both ways)



Moveable lighting  
rigs



65 inch TV screens



Fully air- conditioned



DB audio PA system

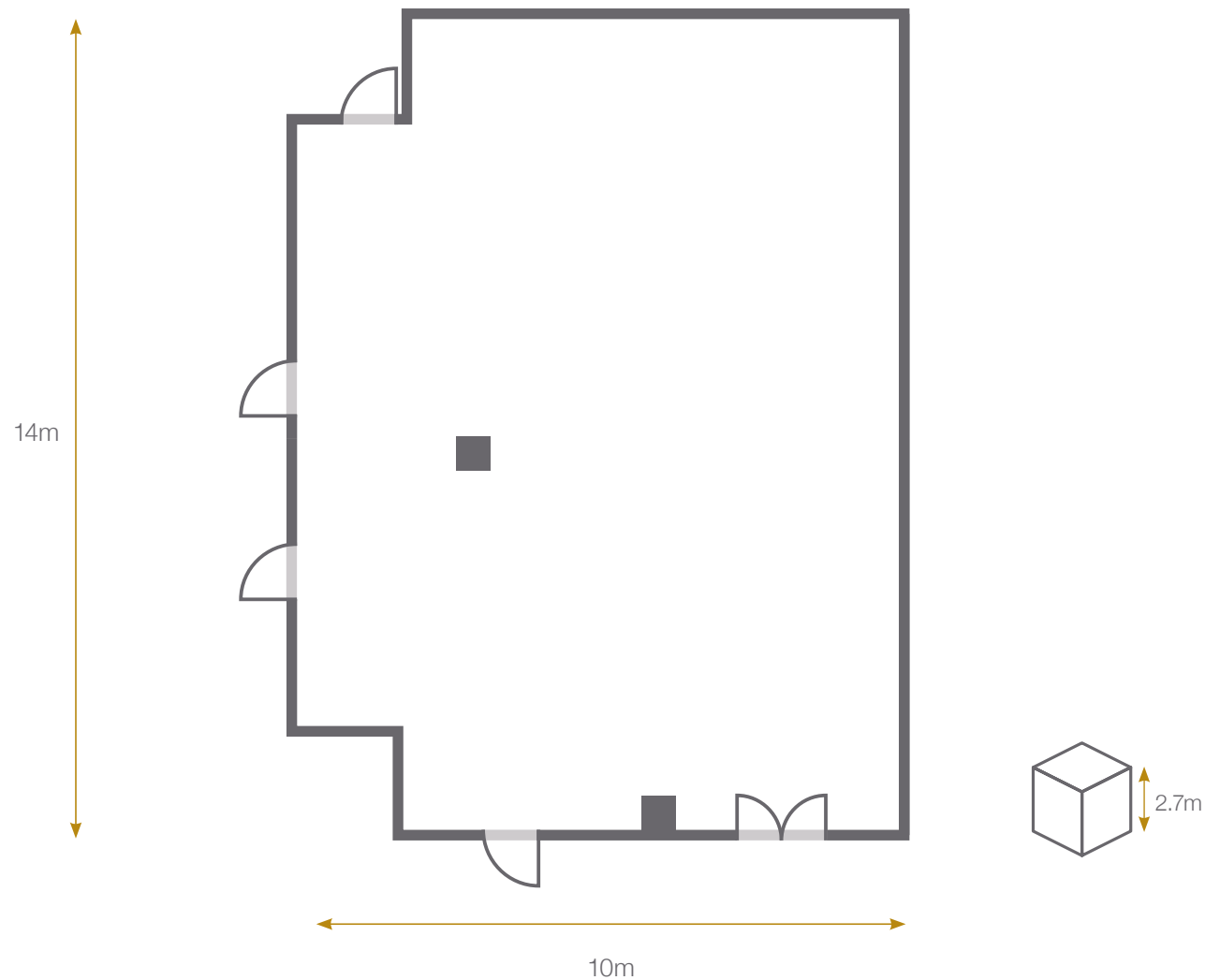


Electronic signage



# MEETING ROOM 2&3 - 146M<sup>2</sup>

The super Meeting Room, for events that just need that bit more space. Through the power of technology (folding doors), watch these two spaces transform into one.



- |                |                  |                |                  |                  |                |                |                  |                 |
|----------------|------------------|----------------|------------------|------------------|----------------|----------------|------------------|-----------------|
|                |                  |                |                  |                  |                |                |                  |                 |
| <b>THEATRE</b> | <b>CLASSROOM</b> | <b>U-SHAPE</b> | <b>HOLLOW SQ</b> | <b>BOARDROOM</b> | <b>CABARET</b> | <b>BANQUET</b> | <b>COCKTAILS</b> | <b>STANDING</b> |
| 160            | 48               | 38             | 44               | 36               | 80             | 120            | 200              | 200             |

## PERFECT FOR

- Photoshoots
- Pop-up events
- Classes
- Workshops
- Conferences
- Screenings
- Launch events

High Speed Internet  
(1 Gbps - both ways)

Moveable lighting  
rigs

65 inch TV screens

Fully air- conditioned

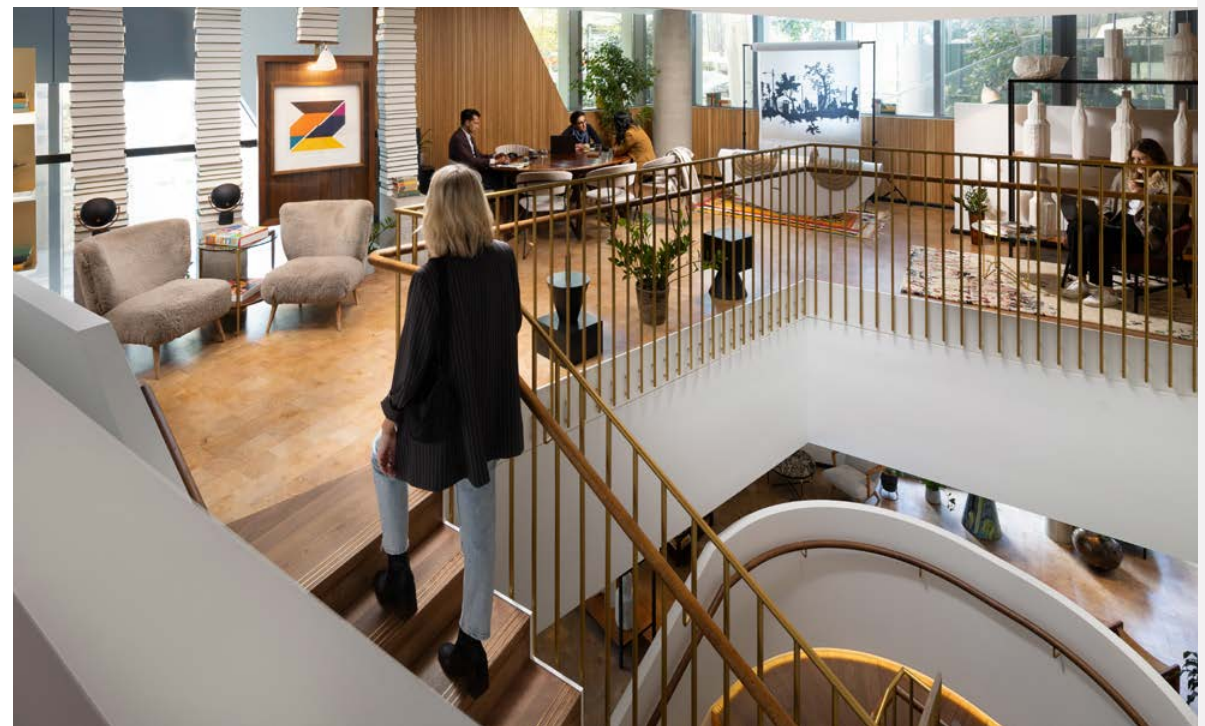
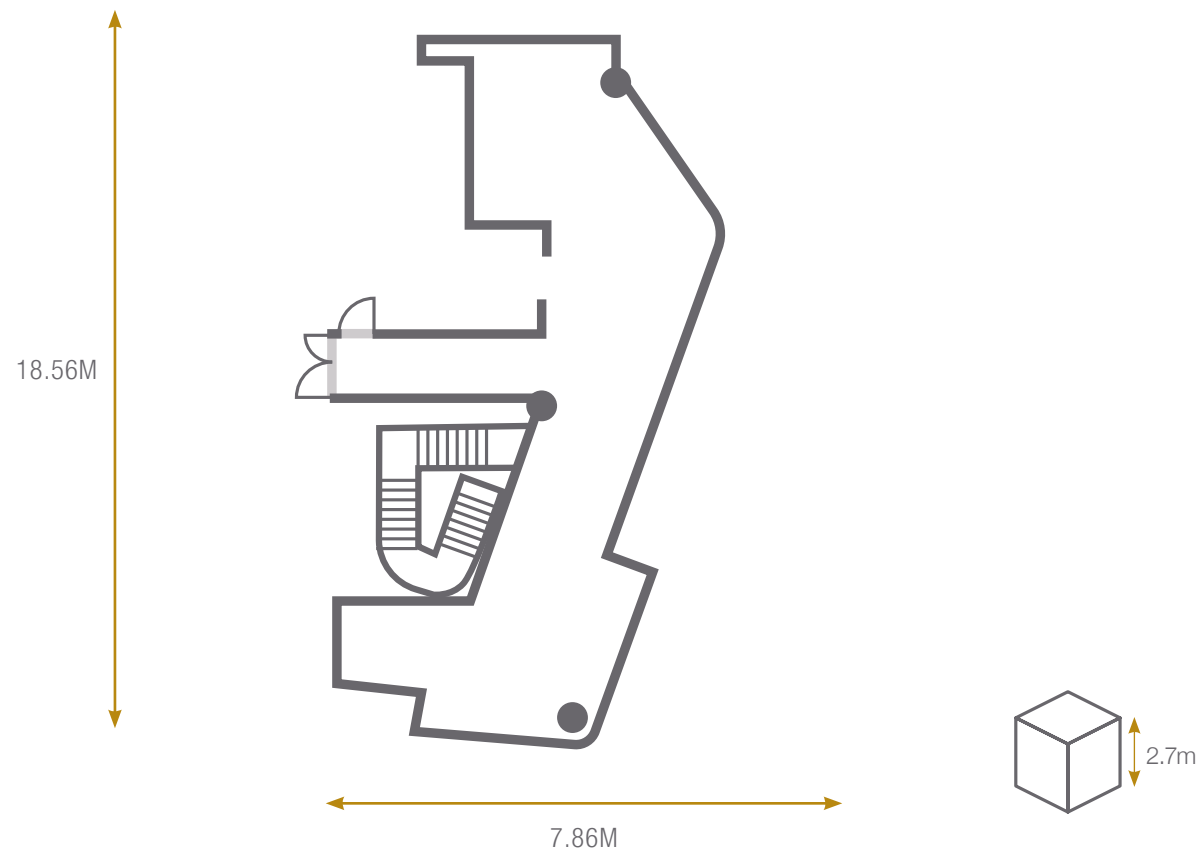
DB audio PA system

Electronic signage



# MEZZANINE - 114.3m<sup>2</sup>

*A versatile residential style lounge. Can be used with or without the outdoor terrace for informal drinks parties, product launches, private dinners or anything where a cool, buzzy vibe is desired.*



## PERFECT FOR

- Cocktail receptions
- Pre/post event drinks
- Private dinners
- Cocktail master classes
- Product launches



High speed internet  
(1 Gbps - both ways)



Residential style  
decor



Fully air- conditioned



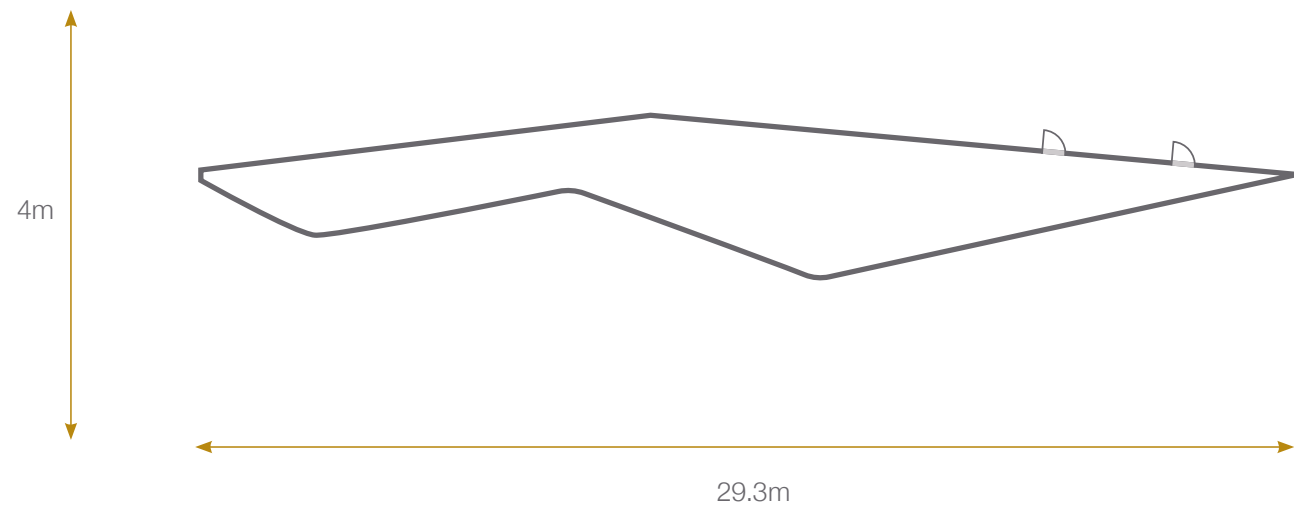
Dedicated toilet

THEATRE	CLASSROOM	U-SHAPE	HOLLOW SQ	BOARDROOM	CABARET	BANQUET	COCKTAILS	STANDING
30	n/a	n/a	n/a	16	n/a	n/a	60	60



# TERRACE - 116M<sup>2</sup>

A unique outdoor terrace with views of St. Paul's Cathedral. The terrace is a great escape pre/post meeting or for summer celebrations.



THEATRE	CLASSROOM	U-SHAPE	HOLLOW SQ	BOARDROOM	CABARET	BANQUET	COCKTAILS	STANDING
n/a	n/a	n/a	n/a	24	n/a	n/a	40	40

### PERFECT FOR

- Private parties
- Pre/post event reception
- Cocktail receptions

High speed internet (1 Gbps - both ways)

Bar

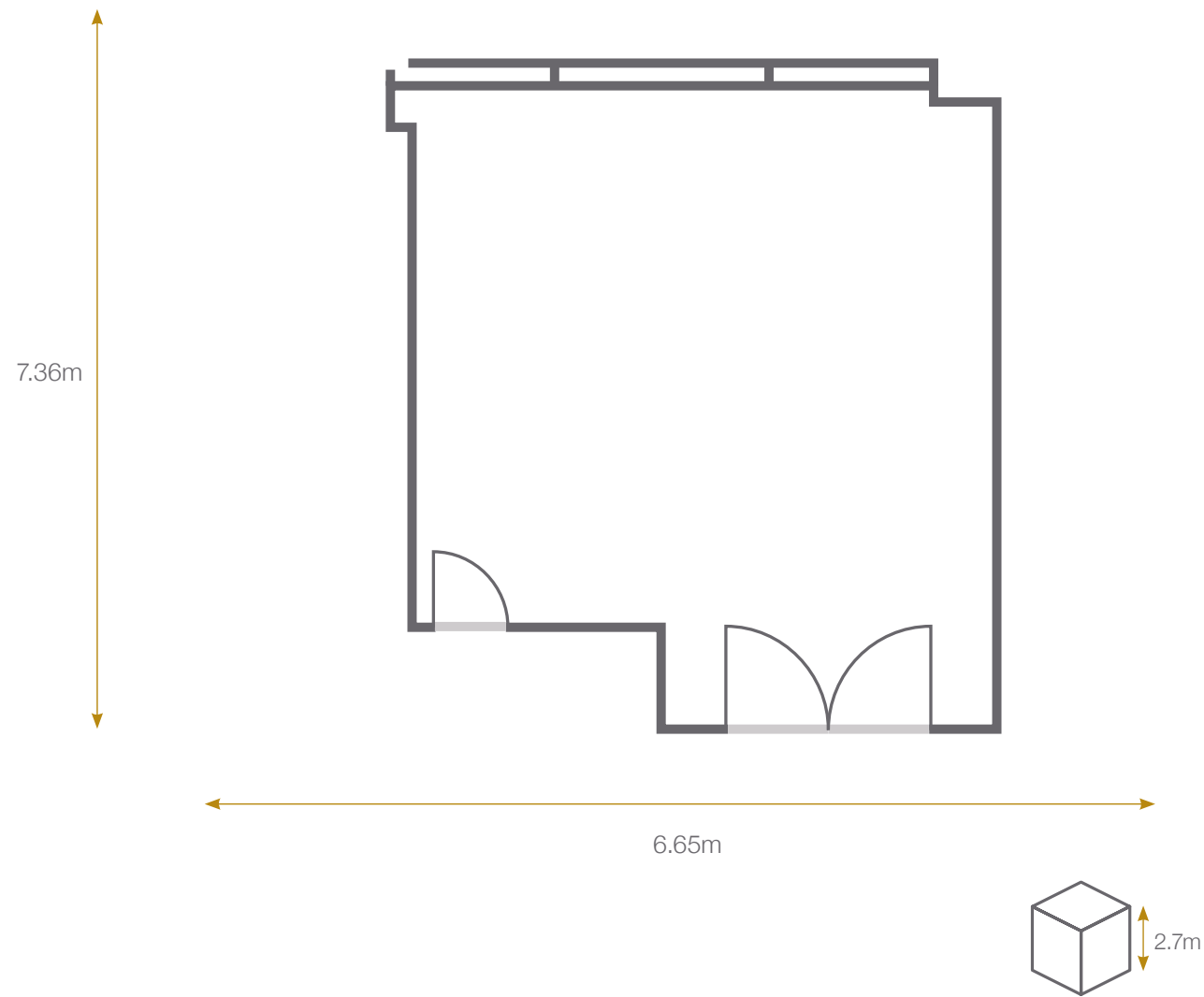
Terrace furniture

Weather dependent



# ART YARD DINING ROOM - 48.94M<sup>2</sup>

*Our Private Dining Room allows parties of 8-24 people to eat and drink on their own. A creative informal space that is ideal for celebrations or business meetings.*



## PERFECT FOR

- Private dinners
- Private parties
- Board meetings



High speed internet  
(1 Gbps - both ways)

THEATRE	CLASSROOM	U-SHAPE	HOLLOW SQ	BOARDROOM	CABARET	BANQUET	COCKTAILS	STANDING
40	12	18	24	32	32	48	50	50





# FUELING CREATIVITY

*Breakout buffet, private dinner or cocktails & canapés, we take a creative approach to food & drink. From the provenance of the ingredients to where and how it is served, every detail is considered to enhance your event.*







For further information or enquiries, please contact us at [groups.events@banksidehotel.com](mailto:groups.events@banksidehotel.com)  
or call + 44 (0)203 943 2220  
[www.banksidehotel.com](http://www.banksidehotel.com)



banksidehotel