



AREPA & CO

VENEZUELAN KITCHEN

Celebrate With Us

Group Bookings or Full Restaurant Hire

AREPA&CO

Thank You

Thank you for your interest in celebrating your special occasion with us! We'd love to host you and help make it a truly memorable experience.

We've made it our mission to introduce London to the bold, vibrant flavours of Venezuelan cuisine.

From casual meals to shared feasts, everything we do is about great food, warm hospitality, and bringing people together around the table.



OUR LOCATIONS

Haggerston

AREPA & CO



Overlooking the beautiful Regent's Canal, this venue is cosy and offers a great view of the water. A perfect spot to gather, share great food, and enjoy relaxed hospitality.

Capacity:

40 guest seated
Up to 50 people.

**58a de Beauvoir Crescent
Haggerston. NI 5YR**

Nearest Station: Haggerston Overground

OUR LOCATIONS

Bethnal Green

AREPA&CO



Bethnal Green features an industrial look with soaring railway-arch ceilings, a second-floor mezzanine and an open front terrace.

Capacity:

Mezzanine: up to 25 people

Main Hall: up to 50 guests

Full Venue: 150 guests

**254 Paradise Row
Bethnal Green. E2 9LE**

Nearest Station: Bethnal Green tube station

OUR LOCATIONS

Elephant & Castle

AREPA & CO



Our latest opening right in the heart of Elephant Park, featuring a contemporary look and a fantastic outdoor terrace. It's a bright, modern space that's perfect for relaxed dining.

Capacity:

Outdoor Terrace: Up to 30 people

Restaurant Hall: Up to 75 guests

8 Ash Avenue

Elephant Park. SE17 1GQ

Nearest Station: Elephant & Castle tube station

OUR LOCATIONS

Brixton

AREPA&CO



Our Brixton venue is the smallest of our locations, tucked inside Brixton's lively Market Row. A relaxed, casual vibe and a great spot to grab a bite, and soak up the energy of the neighbourhood.

Capacity:

Up to 16 people

**14BC Market Row
Brixton Village. SW9 8LD**

Nearest Station: Brixton tube station

FANCY A PROPER *Latin Fiesta?*

Fully hire the space and bring your own decoration and entertainment, or let us handle the fun. We help you turn up the heat with:

- Live DJ
- Dancers
- Performers



FOOD IS EVERYTHING

The Tasting Menu

For large parties looking to enjoy a meal, we highly recommend our **Tasting Menu**. A selection of our most popular dishes, served in smaller versions designed for sharing. Everyone gets to enjoy eight different dishes, giving you a taste of the Arepa & Co menu.



£32.50 per person
(Sample 8 dishes*)

Gluten free, vegan
and vegetarian
options available.

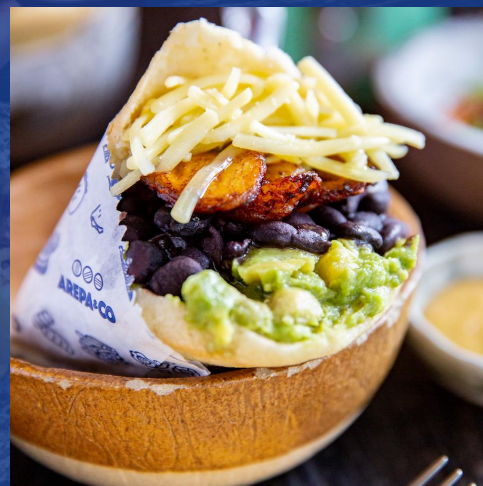
FOOD IS EVERYTHING

More Food Options

Prefer something different?

We can curate the perfect option for your event:

- **3-Course Meal** / From **£35** per person with a glass of wine, beer, or prosecco
- **Buffet-Style Food** / From **£30** per person
- **Canapés** / From **£25** per person
Recommended for standing and mingling parties



COCKTAILS AT THE READY

Your Drink Options

AREPA&CO



Enjoy a **fully equipped and fully staffed bar**, ready to prepare and serve drinks throughout your event.

We can arrange a Prosecco toast on arrival or at any point during the event, and guests are also welcome to order drinks directly from our drinks menu.

If you would like to offer drinks to your guest but to have control over the bar spend, we also offer a **Token System**, just enquiry for further details.

MOVING FORWARD

Your Next Steps

AREPA&CO

The best way to book is to do it directly on our website. Simply select your preferred date, time, and number of guests and, subject to availability, you'll be prompted to send a request for your event.

Alternatively, you can get in touch with us at hello@arepaandco.com with your enquiry. Please include the following details:

- Preferred venue, date, and time
- Number of guests and any special requirement

After receiving your email, we'll confirm availability and send you all the relevant information and next steps to secure the date and start organising your event.

We don't charge a hire fee as such; instead, we work on a minimum spend basis, which can be met through all food and drinks consumed by your guests.

BOOK ONLINE NOW



AREPA & CO

VENEZUELAN KITCHEN

Bethnal Green

254 Paradise Row
London. E2 9LE

Elephant & Castle

8 Ash Avenue
London. SE17 1EU

Haggerston

58a de Beauvoir Crescent
London. N1 5YR

Brixton

14BC Market Row
Brixton Village. SW9 8LD

London
**Evening
Standard**

METRO

TimeOut LONDON
AREPARTY SUMMER BEST THINGS TO DO IN LONDON



**Sunday
Brunch**