



SUSHISAMBA<sup>®</sup>

LONDON EVENTS

# Events & Private Dining at **SUSHISAMBA**

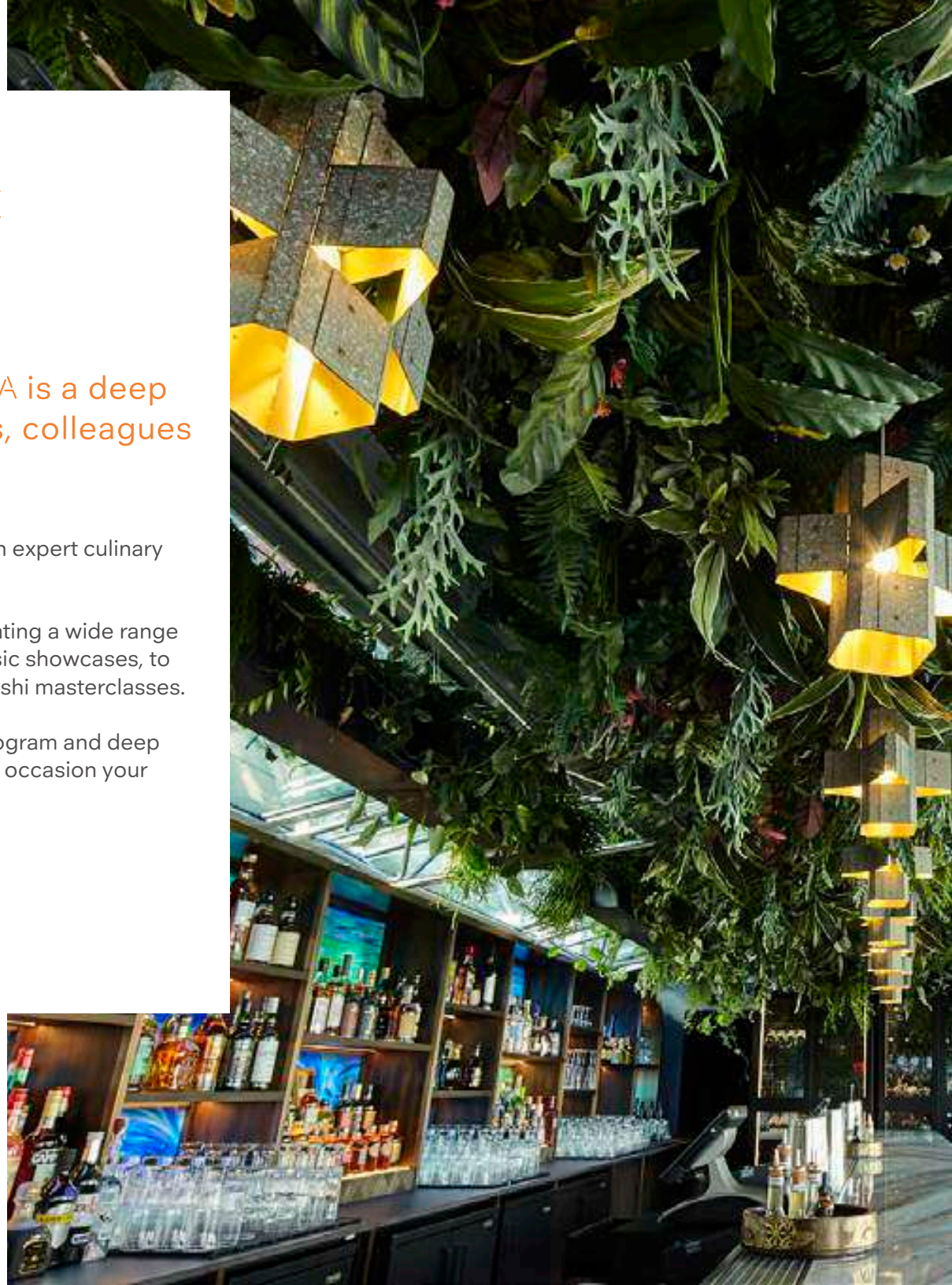
Beating at the heart of every **SUSHISAMBA** is a deep appreciation for enjoying life with friends, colleagues and loved ones.

With two incredible locations, a variety of unique spaces and an expert culinary team, **SUSHISAMBA** offers a one-of-a-kind event experience.

Our dedicated events team have a wealth of experience in curating a wide range of events; from corporate functions, product launches and music showcases, to birthday parties, bespoke tasting experiences and signature sushi masterclasses.

Known for our inventive dishes, critically acclaimed cocktail program and deep commitment to service, you can rest assured that whatever the occasion your guests will enjoy an unforgettable event.

*We welcome you... Bem-vindo!*



# LONDON LOCATIONS



We offer two distinct London destinations, both with the flexibility to host an array of events perfect for celebrating, networking and client entertainment.

From the sparkling lights of the London skyline at our Heron Tower location through to the living ceiling in our Grade II-listed Market Building Covent Garden locale, there are a multitude of event spaces and layouts to suit your requirements.

# LOCATIONS

## SUSHISAMBA HERON TOWER

Located on the 38th and 39th floors of London's Salesforce Tower, **SUSHISAMBA** Heron Tower offers unparalleled views of London, from the Wembley arch to the West, the Olympic Park to the East, the Thames to the South and stunning cityscapes in between.

Two express scenic lifts transport guests to the restaurant at five metres per second, taking entertaining in the capital to new heights.

Comprised internally of a main restaurant, three bars and a private dining room for up to 40 guests, the venue boasts flexibility to host guests in a number of different formats and styles simultaneously. The iconic **SUSHISAMBA** tree sits at the heart of the venue on one of two stunning outdoor terraces. Surrounded by the sky and with the lights of London in every direction, it truly feels as though you're dining amongst the stars.

Additionally, our sister restaurant Duck & Waffle, located on the 40th floor, features the highest private dining room in the UK. Combined with **SUSHISAMBA** Heron Tower, our total event capacity reaches 650 guests, becoming one of the largest spaces for corporate entertaining and launch parties in London!



## SUSHISAMBA COVENT GARDEN

Located at the famed Opera Terrace atop the historic Grade II-listed Market Building, this striking space is a vibrant addition to the area. Crowned by an Eric Parry-designed glass roof, the restaurant runs along the entire east side of the market, providing guests beautiful rooftop views across the Piazza.

Bold in design, **SUSHISAMBA** Covent Garden offers a host of inviting event spaces, including the bar's 'living ceiling' featuring South American and Japanese plants; a theatre-style open kitchen and robata grill; and a high energy sushi bar underneath a bespoke Japanese lighting installation. The space can accommodate 300 guests standing and up to 140 guests for a seated event. In addition to exclusive hire of the venue, **SUSHISAMBA** Covent

Garden boasts two separate spaces, perfect for private events. Our Japanese-inspired private dining room, with its own entrance and a private balcony, can accommodate 15 guests seated as well and our hidden Speakeasy which can accommodate up to 30 guests standing.





# HERON TOWER EVENT SPACES

## 38TH FLOOR - SUSHISAMBA RESTAURANT, BAR, EAST & TREE TERRACE

As the largest space within **SUSHISAMBA** Heron Tower, the main dining room features a double-height ceiling with distinctive hanging pendant lighting. Flanked by both the East and Tree terraces and featuring our Sushi bar and Robata grill, this dramatic, airy space is perfect for both one-of-a-kind seated events or standing cocktail and canapé parties.

The highest outdoor dining space in Europe, the East terrace offers spectacular views of the London skyline with casual lounge furniture and a bar, serving signature cocktails and Champagne. Ideal for cocktail and canape networking events, the space sits aside the main dining room and can be used separately or in conjunction with the main space. Our 39th Floor lounge and bar is reserved as a back-up space in case of inclement weather and so you are always covered.

The tree terrace is at the very heart of **SUSHISAMBA** Heron Tower, featuring a beautiful bar with a 26ft custom orange tree - a sculptural design that reinforces the restaurant's earth-to-sky motif. Your guests will feel as though they are in a garden in the sky, surrounded by wood banquettes, an outdoor fire pit and casual, plentiful seating. Please note that whilst the Tree Terrace can be enjoyed with exclusive hire of the 38th Floor, it cannot be hired on its own.



320

Cocktail



130

Seated



200

Theatre

## 39TH FLOOR - SUSHISAMBA LOUNGE & BAR

The 39th floor Lounge and Private Dining room sits as a mezzanine floor overlooking the spectacular dining room below.

With a rich history of VIP dinners and networking events, the space is both exclusively private yet retains the spectacular views of the London skyline. The space offers the unique ability to seat 40 guests at one central table, and comes equipped with a projector, screen and state-of-the-art AV system.

When removing the central table, the space can accommodate standing cocktail and canapé events for up to 60 guests.

Larger standing events can be accommodated across the 39th Floor lounge and bar taking the capacity to 150 guests. Incorporating our Japanese style bar and in-house DJ Booth, when hired exclusively the 39th floor includes your own entrance and cloakroom.



130

Cocktail



40

Seated



50

Theatre





### 38TH & 39TH FLOOR EXCLUSIVE HIRE

Larger events can be accommodated across the 38th & 39th floors with a capacity reaching 500 guests. With the sweeping staircase and mezzanine lounge overlooking the main room, the two floors operate and feel as one.



450

Cocktail

### 40TH FLOOR - DUCK & WAFFLE

Our sister restaurant, Duck & Waffle, located above **SUSHISAMBA** Heron Tower on the 40th Floor can also accommodate a variety of events. Duck & Waffle can be used independently for up to 250 guests, or combined with **SUSHISAMBA** to accommodate 650 guests across all three floors.



250

Cocktail



120

Seated



160

Theatre



650

Cocktail



## COVENT GARDEN EVENT SPACES

**EXCLUSIVE HIRE**

**SUSHISAMBA** Covent Garden's dining room, with its dramatic black and white marble floors, offers guests three distinct environmental experiences: The bar's 'living ceiling' featuring South American and Japanese plants; a theatre-style open kitchen and robata grill; and the high energy sushi bar, alongside an open air terrace with sweeping views of the Piazza. Accommodating 140 guests for a seated dinner or up to 500 guests standing, this bold addition to the SUSHISAMBA family is as unique as it is impressive.



300

Cocktail



140

Seated



## PRIVATE DINING ROOM

From a breakfast meeting to an intimate meal to a full-blown celebration, our Private Dining Room is situated in one of the oldest parts of the original market building, the South Pavilion. This intimate space comes complete with its own private balcony, perfect for welcome drinks or a post dinner cigar.

The room offers ultimate flexibility: reversible Japanese screens with faceted mirrors on one side and traditional Japanese pastoral scenes on the other easily transform the space for business or pleasure. The room's centerpiece, a dramatic handmade circular dining table seats up to 15 guests and the room comes complete with a plasma screen and dedicated AV system.



15

Seated



## SPEAKEASY

A unique and intimate space, this hidden bar is ideal for networking events and private parties, accommodating up to 30 guests standing.

Enquire with our events team to learn more about London's best kept secret!



30

Cocktail

# ENTERTAINMENT & PRODUCTION

With a wealth of experience, our events team are on hand to assist with all kinds of event production and design.

Whether you're hosting the biggest celebration with roaming performers and a ten piece band or an intimate engagement for two, we've collated a little black book featuring world class talent.

From staging, badging and floristry to Samba dancers, singers and Capoeira martial artists, our team loves to create the perfect setting to suit your event requirements and needs.

Add our state-of-the-art audio visual system to the mix, and the possibilities are endless.



# CUISINE

**SUSHISAMBA's** menus offer an inventive culmination of three countries: Japan, Brazil and Peru. From Japanese tempura and sushi, to Brazilian churrasco and moqueca, to Peruvian anticuchos and seviches, the culinary creativity is limitless with something for every palate.

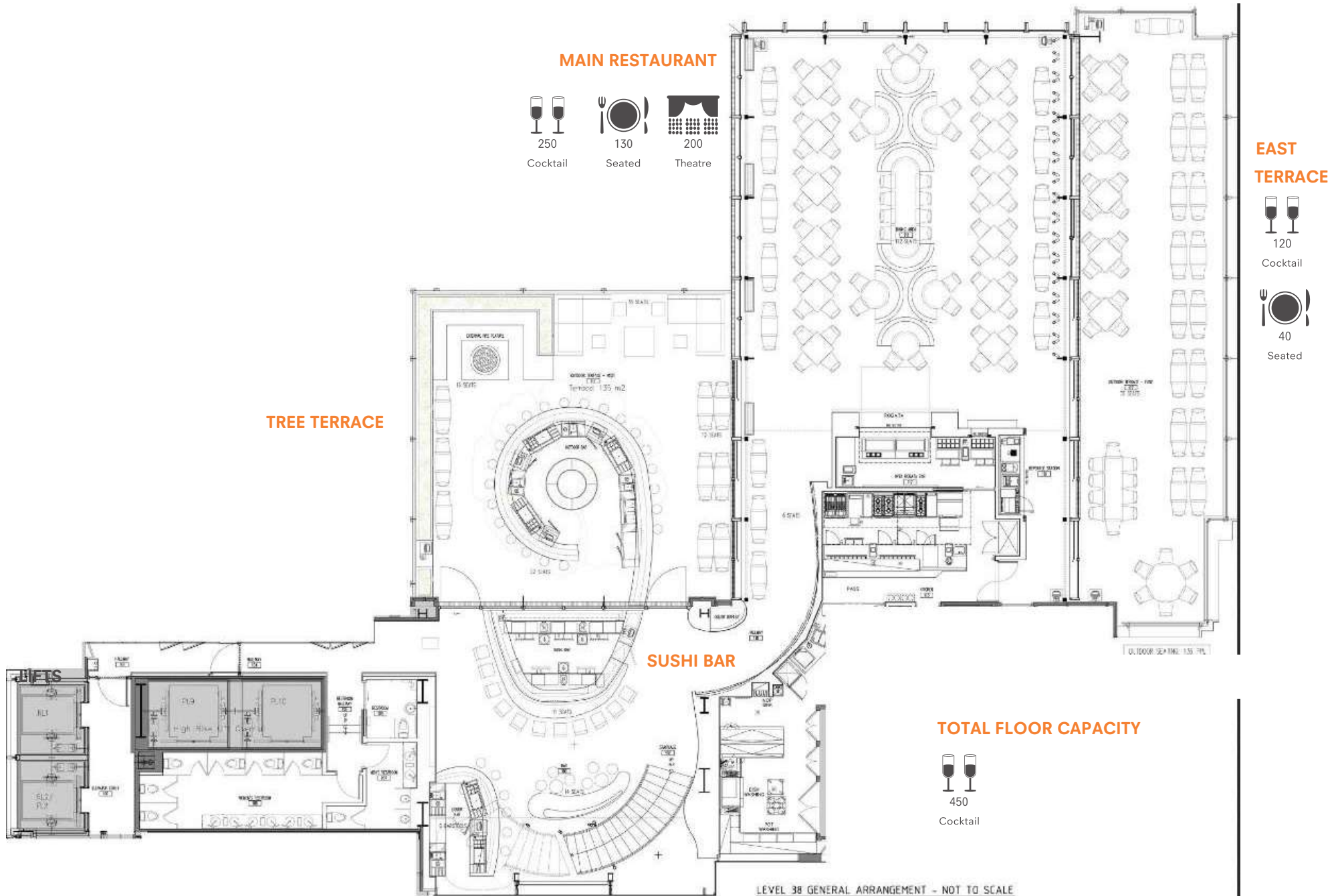
The open kitchen and fiery robata grill offer brilliantly roasted and flavored meats, vegetables and fish. **SUSHISAMBA's** conceptual small-plate style of service encourages a "shared" dining experience for guests during seated events and an exciting selection of signature canapes for guests during receptions and parties.



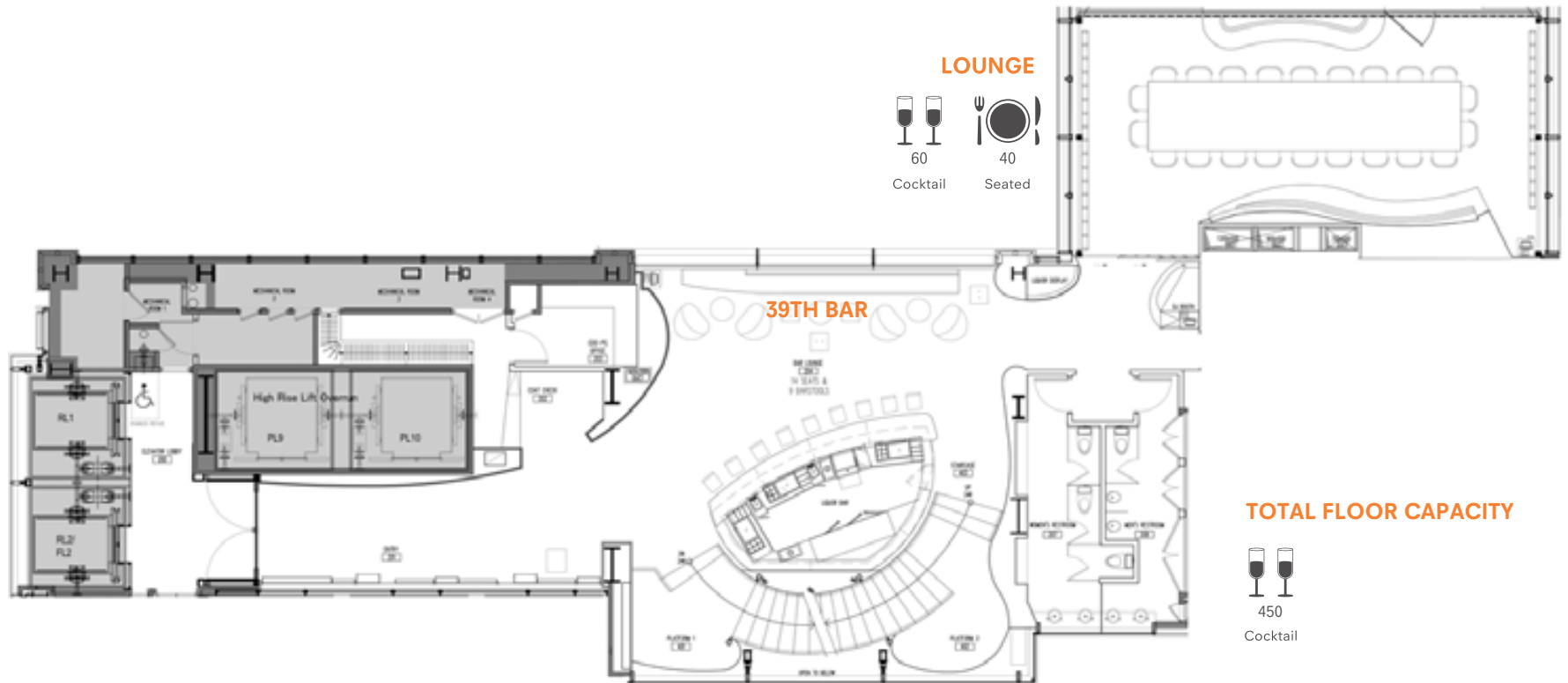
# BEVERAGE

**SUSHISAMBA** offers an expansive list of signature cocktails such as the Nina Fresa®, Samba Sour and Kaiffirinha. The beverage menu also includes cultural spirits such as shochu, pisco and cachaça, in addition to wines and Champagne. What's more, the restaurant boasts one of the largest premium sakes selections in the world and a robust Japanese whisky collection.

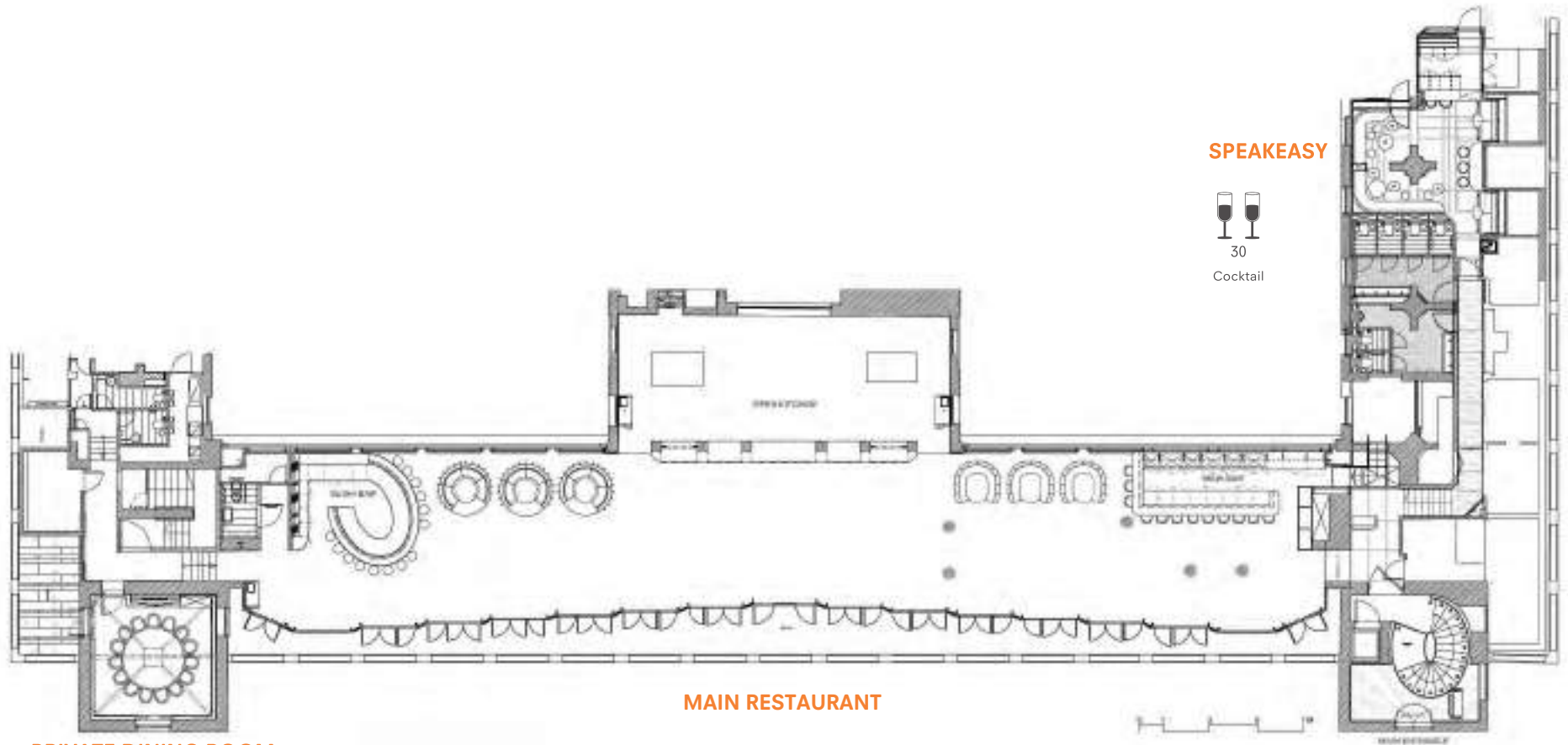
# FLOOR PLAN HERONT OWER 38TH FLOOR



# FLOOR PLAN HERON TOWER 39TH FLOOR



# FLOOR PLAN COVENT GARDEN



**PRIVATE DINING ROOM**



15

Seated

**MAIN RESTAURANT**

**SPEAKEASY**



30

Cocktail

**TOTAL CAPACITY**



300

Cocktail



140

Seated

