



PAN PACIFIC  
LONDON

---

## Events & Private Dining

---



# STRAITS KITCHEN

Embracing a respectful approach to cooking based on heritage recipes, our menu in Straits Kitchen showcases a melting pot of cuisines from Singapore's many cultures. The team is headed by our Executive Head Chef, Fabrice Lasnon.

We use pure Asian ingredients, sourced and grown locally in the UK to minimise our carbon footprint, which also brings authentic flavours to the table.

Serving breakfast, lunch and dinner, the restaurant features floor-to-ceiling glass windows overlooking the Plaza, while two private dining rooms enable guests to enjoy a selection of set menus to suit all tastes and occasions.

Straits Kitchen and Bar is available for private dining and for semi and exclusive hire for breakfast, lunch and dinner.

## HOURS OF OPERATION

**EXCLUSIVE HIRE:** 9am - 5.30am (Full day)

*or*

**BREAKFAST:** 7am - 10.30am

**LUNCH:** 12.30pm - 3.30pm

**DINNER:** 5.30pm - 10.30pm

*Tailor-made timings may also be discussed.*

*A 12.5% Service Charge will be added to each agreement*



# Straits Kitchen

*Breakfast, Lunch or Dinner*

---

## Semi-Private

### **INCLUDED IN YOUR EXPERIENCE:**

Maximum capacity 40 guests  
Set Menu – pre-order required  
Name cards

## Exclusive

### **INCLUDED IN YOUR EXPERIENCE:**

Maximum capacity standing 150 guests  
Maximum capacity seating 120 guests  
Full use of Straits Kitchen and Bar  
Pre reception drinks in Straits Bar  
Flexible seating arrangements  
Audio sound system



# Straits Bar

---

Exclusive hires of Straits Kitchen includes full access to Straits Bar, whilst for private dining rooms, semi-exclusive access to the bar is available for pre-drinks receptions for lunch or dinner.

Our bar showcases 150 carefully curated Champagnes and is also home to Champagne-based, Asian-inspired cocktails along with an extensive list of premium spirits.

A canapé menu is also available to perfectly compliment a pre-lunch or dinner experience.

Straits Bar is also available for exclusive hire .



# Newton & Katong

---

Newton and Katong offer two intimate private dining spaces accommodating all tastes and occasions, from working breakfasts to lunch hour meetings to celebratory dinners.

Newton welcomes 12 guests at a striking asymmetrical table, while Katong seats 14 around a central captain's table.

Enjoy seasonal curated menus with traditional and signature dishes served individually or in a shared style.

Full day and/or evening hire is available, or individual timings for breakfast, lunch or dinner.





# Breakfast

---

## INCLUDED IN YOUR EXPERIENCE:

- A La Carte Breakfast menu
- Continental station offering a selection of fresh pastries
- Freshly squeezed Juices
- Nespresso coffee station and a selection of teas
- Name cards
- Audio Sound System



# Lunch

---

## INCLUDED IN YOUR EXPERIENCE:

Semi Exclusive hire of Straits Bar

A La Carte or Set Menus

Nespresso coffee station and a selection of teas

Name cards

Private waiter

Sommelier

Audio sound system





# Dinner

---

## INCLUDED IN YOUR EXPERIENCE:

Semi Exclusive hire of Straits Bar

A La Carte or Set Menus

Name cards

Private waiter

Sommelier

Audio sound system



# Personalise Your Private Dining Experience

---

## *Select £120*

Beautiful hand-tied seasonal posies in vases, surrounded by an abundance of tea light holders.

## *Classic £200*

A contemporary arrangement with a traditional hand-tied bouquet set in a fishbowl or square arrangement. Accompanied with a series of tea lights, church candles, and/or floating candles.

## *Premium £500*

A beautiful medium hand tied seasonal bouquet set in the centre of the table with your choice of a luxury vase or handcrafted pedestal. The arrangement can be accompanied by a series of tea lights, church candles, and/or floating candles.

## *Luxury £600*

Our signature large flower arrangement complemented with fresh seasonal flowers to adorn the centre of the table. Choose from a luxury vase or a handcrafted pedestal. Accompanied by a series of tea lights, church candles, and/or floating candles.

All blooms are seasonal and come in a variety of colours, perfect for any occasion. Tea lights can be provided in clear, silver and gold vessels for your desired look. Candles are subject to availability. All prices include VAT.



---

Our Private Dining Festive Offering

---



White Christmas



# Personalise Your Festive Private Dining Experience

*in Katong or Newton*

---

## White Christmas

### *Classic £600*

Centrepiece and a side piece by the window.

### *Premium £1000*

Centrepiece and a side piece by the window,  
plus three flower arrangements.

### *Luxury £1500*

Centrepiece and a side piece by the window,  
plus three large flower arrangements.

All blooms are seasonal and come in a variety of colours, perfect for any occasion. Tea lights can be provided in clear, silver and gold vessels for your desired look. All prices include VAT.



# Traditional Christmas

---

## *Classic £600*

Centrepiece and a side piece by the window.

## *Premium £1000*

Centrepiece and small Nutcracker figurines on the table plus floating candles.

## *Luxury £1500*

Centrepiece and small Nutcracker figurines on the table plus three candelabras.

or

Centrepiece and small Nutcracker figurines on the table plus two candelabras and floating candles.

All blooms are seasonal and come in a variety of colours, perfect for any occasion. Tea lights can be provided in clear, silver and gold for your desired look. Candles are subject to availability. All prices include VAT.





Traditional Christmas



# Festive Wishlist

---

Seasonal Bouquet - all requests can be tailored to a specific colour palette or flower type

Mulled Wine - Domaine de La Merlon

Mince Pies

Cheese Selection

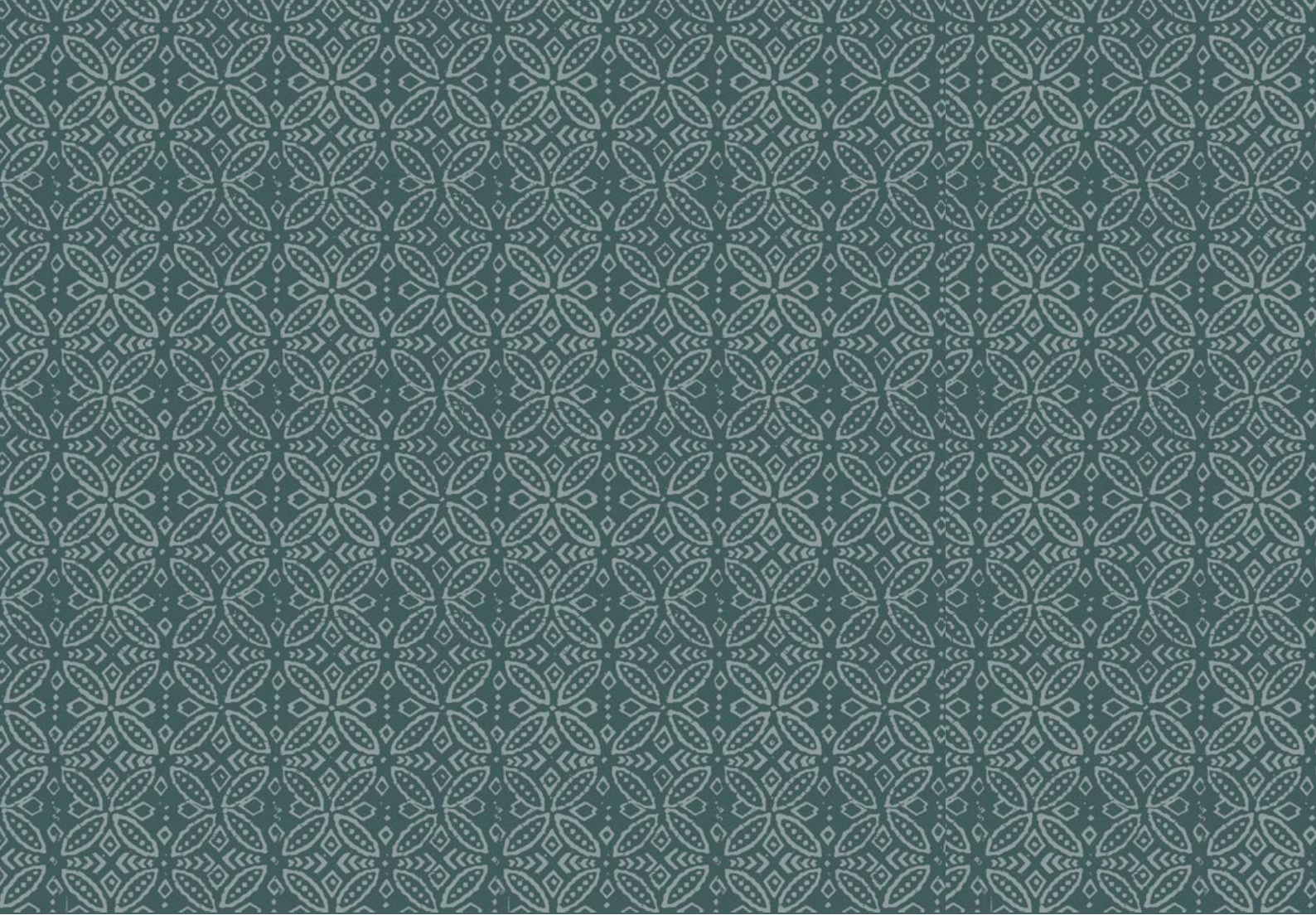
Diptyque Personalised Candles

## Enjoy an event to remember

To discuss your requirements and available add-ons such as equipment hire, live entertainment and flower arrangements, please contact [dining.pplon@panpacific.com](mailto:dining.pplon@panpacific.com).







## Contact

Pan Pacific London  
80 Houndsditch, London, EC3A 7AB

[dining.pplon@panpacific.com](mailto:dining.pplon@panpacific.com)  
[panpacificlondon.com](http://panpacificlondon.com)