



# The Hoxton

Life is about connections. Each Hoxton hotel reflects, and is a part of, the fabulous neighbourhood around it. Our locations are no accident: from reinvigorating landmark buildings and creating harmonious new spaces, to collaborating with local creatives and our signature neighbourhood guides, we shine a light on the places we call home.

And we've grown since our very first Hoxton in Shoreditch, 2006; by 2018, Holborn, Amsterdam, Paris, Williamsburg and Portland had all joined the club. Chicago, Downtown LA and another London Hox, Southwark, opened in 2019, while 2021 welcomed Rome, with Shepherd's Bush and Barcelona in 2022, and Brussels and Berlin in the works this year.



# The Hox family

2006



*Shoreditch, London*

Birth of the Hoxton Hotels, right in the heart of East London.

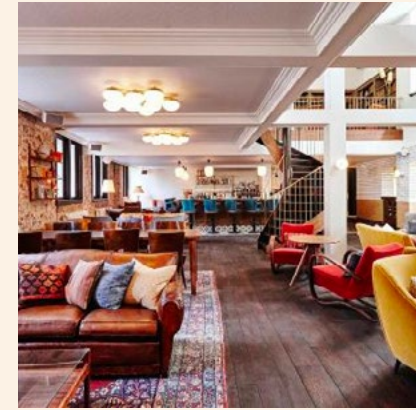
2014



*Holborn, London*

Former BT Exchange building converted into second London Hoxton.

2016



*Amsterdam*

Our first Hoxton outside of London on the Herengracht Canal.

2017



*Paris*

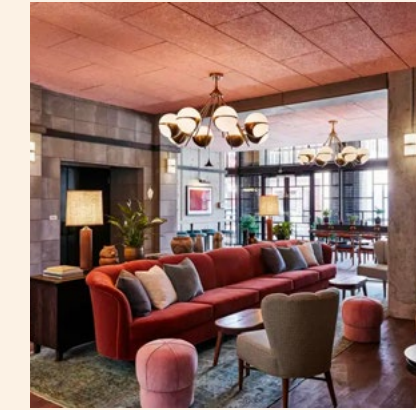
Located in Paris's 2nd Arrondissement

2018



*Williamsburg, NYC*

Situated in Brooklyn's creative heart, Williamsburg.



*Portland*

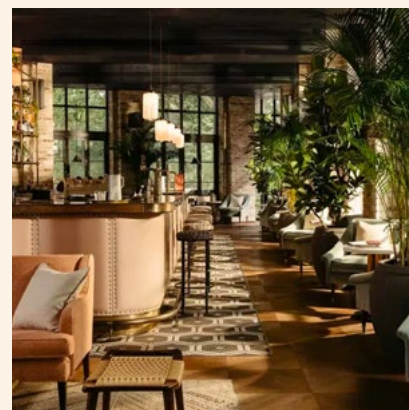
In the Old Town Chinatown District.

2019



*Chicago*

Situated in the Fulton Market District.



*Southwark, London*

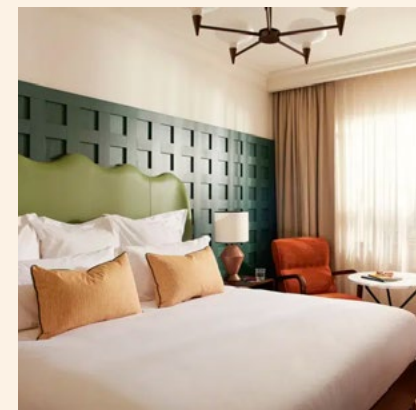
Our third London Hoxton a stone's throw from South Bank.



*Downtown LA*

A historic Broadway building located in Downtown LA.

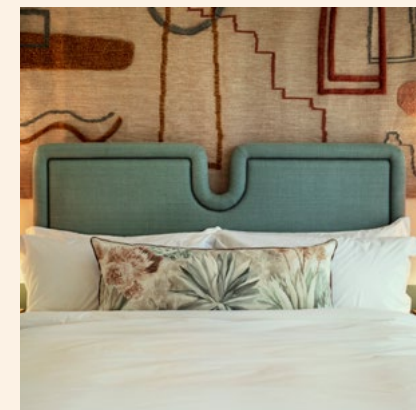
2021



*Rome*

Our first Hoxton in Italy, situated in the leafy neighbourhood of Parioli.

2022



*Poblenou*

Bringing the Hox experience to Barcelona, in a popular beachside neighbourhood.



*Shepherd's Bush, London*

Our fourth London Hoxton goes West, as the gateway to eclectic W12.

C H E C K I N



What we do

# More than a hotel

The Hoxton has never just been about offering a bed for the night. We want to be more than that, providing a vibrant and welcoming place where guests can hangout alongside the locals and immerse themselves in the neighbourhood.

## *Bringing the Outside In*

From the locally sourced art on our walls, bookshelves curated by Hox Friends, and Best Of collaborations; to our programme of monthly events unique to each location.

## *Hox Shop*

From Best Of to Blank, we've created and curated lovely products exclusively for The Hoxton. Plus each room has a mini fridge to stock with products from our Hox Shop at supermarket prices.

## *Our Design*

All our spaces are vibrant, cosy, welcoming, and inspired by our local neighbourhoods.

## *No rip-off policy*

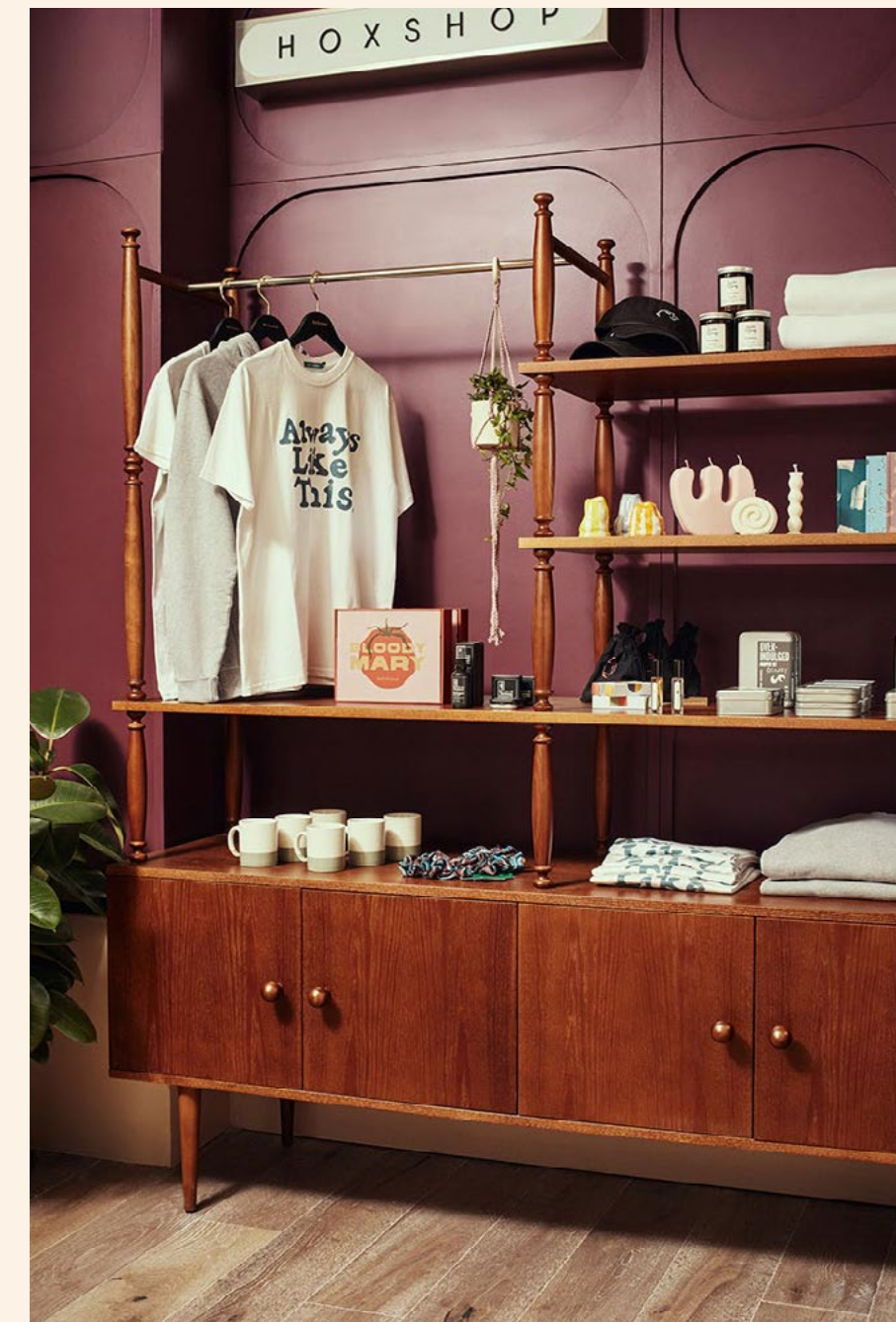
Our rooms have everything you need and nothing you don't. Everyone gets water, fresh milk, coffee and tea, and a fridge that's yours to stock with snacks and drinks from our Hox Shop, where you'll find beers, wines and soft drinks at supermarket prices.

## *Meet, Eat, Party, Repeat*

Our events space, The Apartment, is there to make your own. Day or night, take over the whole space or just one room.

## *Working From*

A new dedicated workspace by The Hoxton – inspired by all the folk working from our lobbies since 2006.



# The Hoxton, Shepherd's Bush

65 Shepherd's Bush Green, London W12 8QE

The Hoxton, Shepherd's Bush will come as the fourth Hoxton in our hometown of London, and marks the first time heading west for our East London-born brand. Located on Shepherd's Bush Green, in the heart of the eclectic neighbourhood, well placed near White City and Portobello Road, and with great transport links for exploring West London and beyond. A nine-storey hotel on the green complete with retro pastel-hued restaurant, terrace, courtyard and The Apartment meeting and events space.

*237 rooms – including  
our new 'Hideout'  
category*

*1 restaurant & bar –  
plus a terrace and  
courtyard*

*4 meeting &  
event spaces*

the hoxton



The Hoxton, Shepherd's Bush  
65 Shepherd's Bush Green, London W12 8QE



## 237 rooms

Our 237 rooms come in different categories to suit all kinds of stays, ranging from Hideout to Roomy. The Hoxton, Shepherd's Bush will introduce a new and most pocket-friendly 'Hideout' room category – perfect for when you just need a place to crash.



## Hosting a meeting or party?

The Apartment offers 4 individually designed rooms and terrace space for occasions big and small. Whether it's a party, a private dinner, team away day or brainstorming session, we've got spaces to suit.



## No rip-off policy

Our rooms have everything you need and nothing you don't. Everyone gets water, fresh milk, coffee and tea, and a fridge that's yours to stock with snacks and drinks from our Hox Shop, where you'll find beers, wines and soft drinks at supermarket prices.



## Wining & dining?

Whether you're flying solo or entertaining friends, enjoy comforting classics like burgers and salads in our Lobby Bar or head to Chet's for fiery-flavoured American fare, influenced by Asian cuisine.

## The neighbourhood

Shepherd's Bush has a rich history of music, theatre and film, with iconic live music venues and famed theatres dotted throughout the neighbourhood and the 1960s-built BBC television centre nearby at White City. Full of buzzy restaurants, independent shops, eclectic markets and great pubs, Shepherd's Bush is one of London's most diverse and exciting neighbourhoods to get out into and explore.



### *How to get there*

If catching the London Underground, Shepherd's Bush is your nearest station (200m).

King's Cross St Pancras train station is just a 30-minute tube away.

Heathrow Airport (LHR) is 30 minutes' drive away.

### *Want to know more?*

[sales.shebu@thehox.com](mailto:sales.shebu@thehox.com)  
0207 903 3000

A place to hang | *Our Lobby*





A modern dining room with wooden tables, patterned chairs, and a bar area with stools. The room is dimly lit with warm, ambient lighting. In the foreground, there is a bar with three high stools featuring a geometric pattern. To the right, a wooden coffee table holds a stack of books and a small candle. In the background, several round wooden tables are set with glassware and plates, ready for a meal. The walls are decorated with patterned panels and framed art. The floor is made of dark wood.

# Meetings & party time

4 rooms

# The Apartment

---

Step inside The Apartment: our uniquely designed West London events and meetings space.

Whether you're celebrating, launching, presenting or networking, any of the four versatile Apartment rooms will suit – not forgetting the Pantry, our airy kitchen space that flips to a private bar come evening.



The Pantry





The Living Room | *Max Peeps 25*



The Study | Max Peeps 25



The Library | *Max Peeps 20*



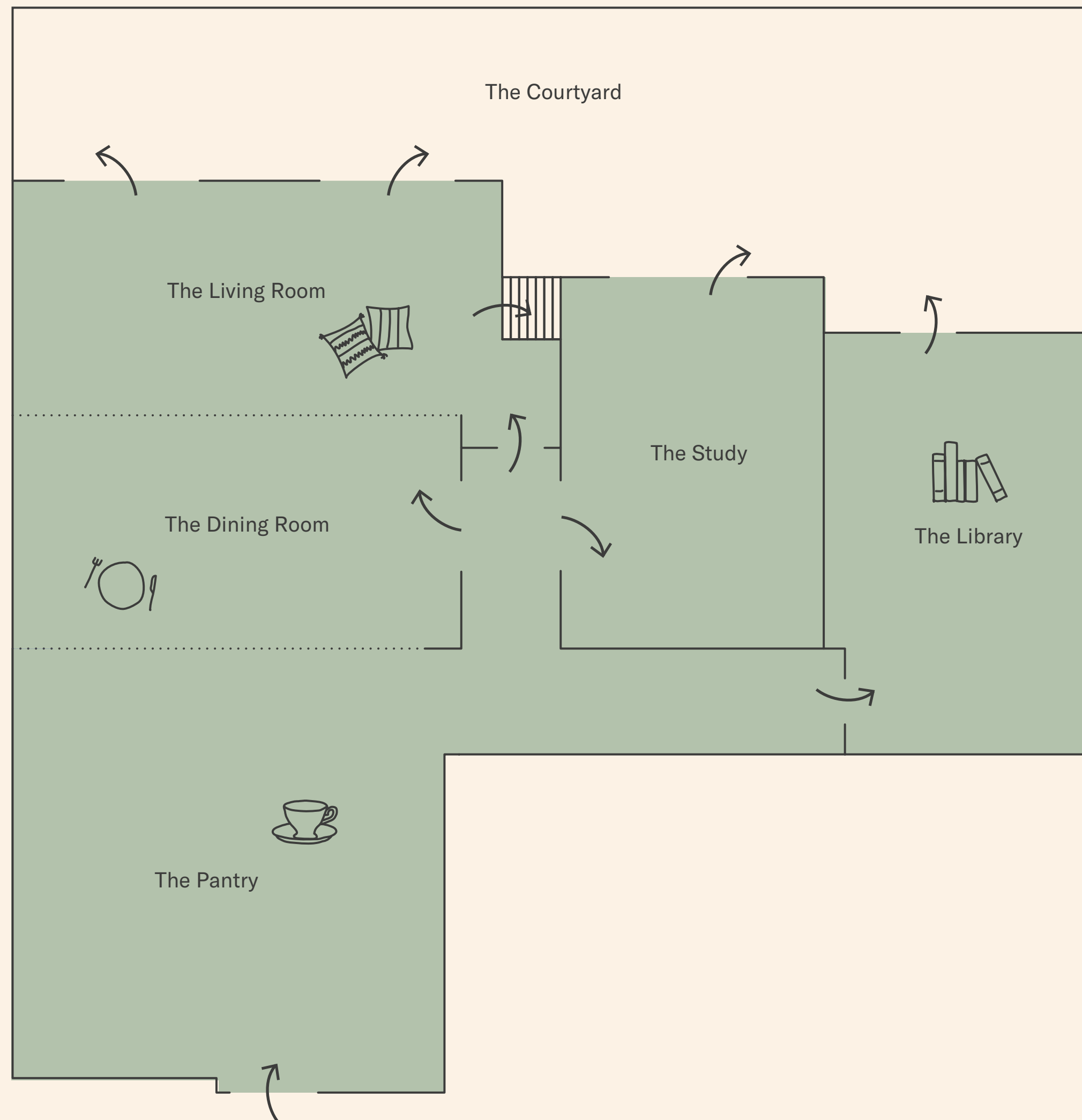
# The Dining Room & The Living Room

Max Peeps 56





# The Apartment | 4 rooms



Room	Boardroom	Theatre	U-shape	Private Dining	Reception
Dining Room	16	20	-	20	25
Living Room	16	24	-	20	25
Dining & Living Combined	32	56	22	40	50
Study	12	25	-	14	20
Library	14	20	-	16	20
Pantry	-	-	-	-	50
The Apartment	-	60	-	50	100

# the hoxton

*Want to know more?*

[events.london@thehox.com](mailto:events.london@thehox.com)



The Hoxton, Shepherd's Bush  
65 Shepherd's Bush Green, London W12 8QE